



# Bodywrap Whirlpool System Assembly And Operation Guide



## BODYWRAP SYSTEM®

Bodywrap whirlpool systems are offered on numerous MAAX models of various sizes, shapes and surface materials. Depending on the model selected, the unit is equipped with a complete multi-jet factory installed and tested system designed for personal usage in a permanent installation. (Refer to specific model for exact features.)

These guidelines are recommended by MAAX Bath Inc. (hereafter "MAAX") for the proper assembly and operation of the whirlpool system. A careful review of these procedures (and any referenced publications) before starting is important in avoiding unnecessary problems resulting in an improper assembly or operation.

**NOTE:** All drawings in this publication are typical and may appear different than the actual items.

**WARNING!**  
NEVER LIFT OR HANDLE WHIRLPOOL BY SYSTEM PIPING AT ANY TIME. LIFTING THE UNIT BY THE PIPING CAN CAUSE SYSTEM DAMAGE.

### Special Notes to Installer

- > Do not remove the Medallion Identification Number. Doing so may affect the warranty. This number may be found on the rim or apron/skirt of the unit.
- > It is the sole responsibility of the installer to determine, prior to installation, the requirements necessary for compliance with all codes involving the unit and the installation!
- > All paperwork packaged with the unit and any associated options or accessories should be saved and presented to the homeowner upon completion of the installation!
- > All published unit dimensions are for reference only. **Any critical dimensions required for installation should be taken directly from the unit being installed!**
- > Any independent changes made to the whirlpool system (or unit) beyond those required for normal installation can void all warranties! (Refer to warranties for further information).

## IMPORTANT SAFETY INSTRUCTIONS

**WARNING!** Basic precautions should always be observed regarding the installation and the operation of a whirlpool system, including the following:

1. **READ AND FOLLOW ALL INSTRUCTIONS.**
2. **DANGER:** To reduce the risk of injury, DO NOT allow children to use or operate the whirlpool unless closely supervised by an adult at all times.
3. Use this unit only for its intended purpose as described in this publication. **DO NOT** use attachments not recommended by the manufacturer.
4. **NEVER** drop or insert any object into any opening.
5. **DO NOT** operate the whirlpool without the guard(s) (suction covers) installed over the suction fitting(s).
6. **The whirlpool system can only be connected to an electrical supply that is protected by a ground-fault-circuit-interrupter (GFCI).** The GFCI should be provided by the installer and tested on a routine basis.
  - To test the GFCI, push the test button. The GFCI should interrupt power.
  - Push the reset button. Power should be restored.

If the GFCI fails to operate in this manner, there is a ground current flowing, indicating the possibility of an electrical shock. **DO NOT USE THE WHIRLPOOL. DISCONNECT THE WHIRLPOOL SYSTEM,** and have the problem corrected by a qualified service representative before continuing usage.

7. A pressure wire connector is present on many pumps (pumps that have some exposed metal on the housing) to permit connection of a No. 8 AWG (8.4 mm<sup>2</sup>) solid copper bonding conductor between the system and all other electrical equipment and exposed metal in the vicinity, as needed to comply with local requirements. **NOTE:** pumps and other electrical components that have all plastic housings do not have or require this bonding conductor and do not have a pressure wire connector on the housing.

## SAVE THESE INSTRUCTIONS

## Inspection Guidelines

A careful check of the whirlpool system should be conducted upon receipt of the unit. The basic whirlpool configuration is shown in Figure 1. A system with an in-line heater is shown in Figure 2.

If the unit has a factory-fitted:

- Alternate pump location, refer to the Supplemental Assembly information packaged with the accessory items for additional item checks before continuing. Notify your supplier immediately if any questions or problems are encountered during this process.

**DO NOT INSTALL UNIT WITHOUT FIRST ADDRESSING QUESTIONS WHICH ARISE DURING THE INSPECTION!**

### Basic Whirlpool System Check

> Check to be certain the air hose is secured to the on/off button and to the whirlpool pump. It is possible that during shipping and handling this air hose may become loose. This hose must be firmly in place on both the on/off button and pump-motor, otherwise the pump will not start.

### Whirlpool System with Mounted In-Line Heater Check

> Check for factory installed in-line heater option mounted on pump.

> Check system to ensure all trim is in place and for finish color ordered.

## Installation Guidelines

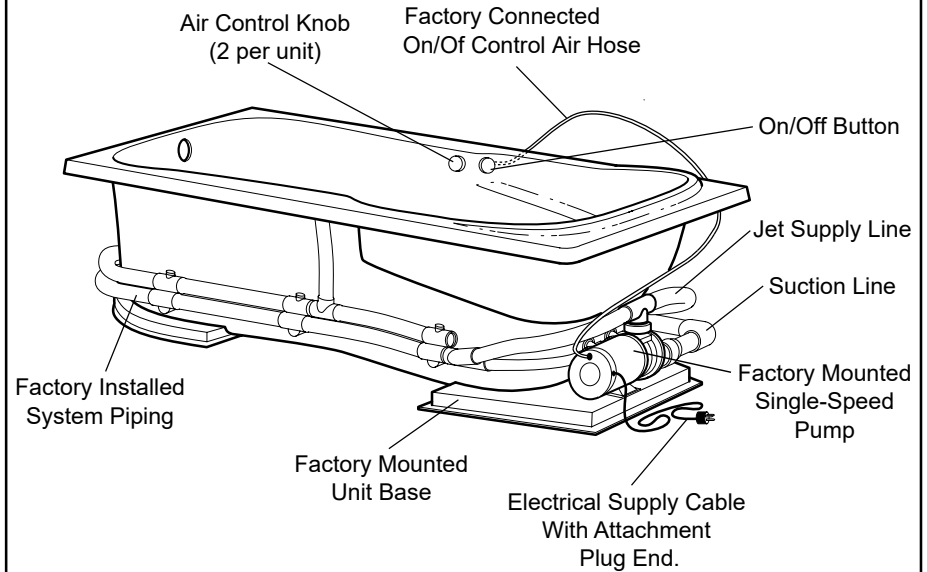
### Framing and Installation Requirements

Framing and dimensional requirements for clearance of whirlpool fittings are included in the installation guidelines with the basic unit. Refer to clearance information for optional components if present. This information is provided in supplemental documents provided with the whirlpool packaging.

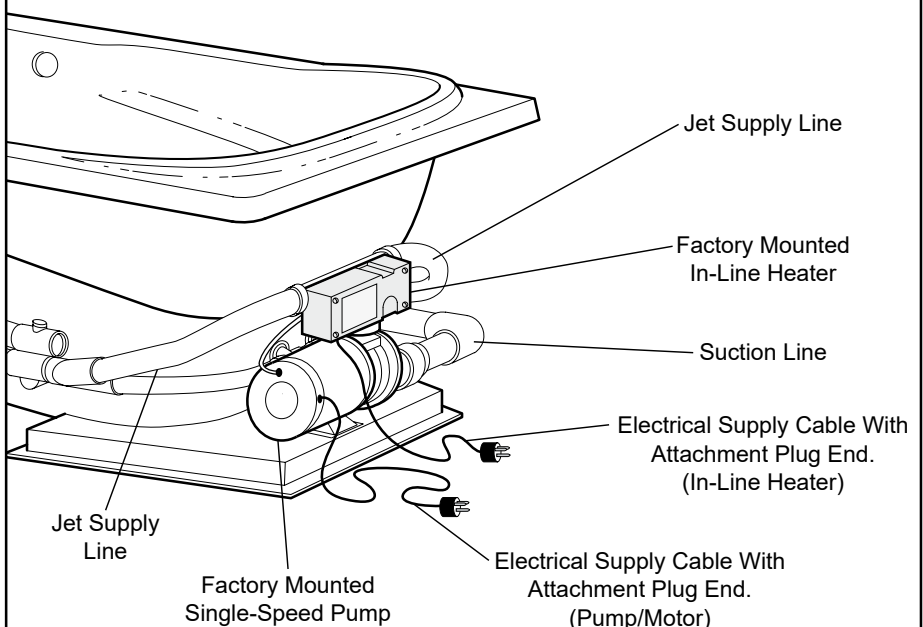
**WARNING!**  
ADEQUATE ACCESS MUST BE PROVIDED AT THE PUMP LOCATION.

The basic whirlpool system is produced with the pump secured to the unit base and the complete system assembled at the factory.

**Figure 1 - Basic Whirlpool System**  
(Typical Tub Illustrated)



**Figure 2 - Whirlpool System With In-Line Heater** (Factory Installed Option)





# Bodywrap Whirlpool System Assembly And Operation Guide

If the unit has a factory-fitted:

- **Alternate pump location,**

Additional on-site assembly will be required. Refer to the Supplemental Assembly information packaged with accessory item(s) before continuing.

### Electrical Service and Connections

When providing electrical service, basic precautions should be observed, including the following:

- > All wiring should be done by a licensed electrician in accordance with all applicable local and national codes.
- > The system must be connected to a dedicated circuit(s) protected by a ground-fault-circuit-interrupter(s), (GFCI). (Installer supplied).
- > Properly ground the system.

**WARNING!**  
RISK OF ELECTRICAL SHOCK!  
MAKE SURE POWER IS OFF WHEN  
WIRING THE WHIRLPOOL SYSTEM.

### System Pump Wiring

The pump motor has a factory installed electrical cable with plug. This will be plugged into a single dedicated service line. This line is protected by a ground-fault-circuit-interrupter (GFCI), 20 amp breaker. The line runs from the main service panel to an independently mounted junction box with receptical.

Junction box mounting and all field electrical connections must be in accordance with applicable national and local electrical codes.

If your whirlpool is configured with a factory installed ozonator, this component has a factory installed electrical cable with plug.

The ozonator will be plugged into the receptical first, then the pump-motor electrical cable plugged into the ozonator receptical as shown in Figure 3.

### In-Line Heater Wiring

The In-Line heater has a factory installed electrical cable with plug. This will be plugged into a single dedicated service line. This line is protected by a ground-fault-circuit-interrupter (GFCI). The line runs from the main service panel to an independently mounted junction box with receptical.

Breaker size and Junction box mounting must be in accordance with applicable national and local electrical codes.

The In-Line heater will be plugged into this receptical.

**NOTE:** Never plug the In-Line heater into the same service line as the pump. Each of these components **MUST** have separate electrical service lines.

**Whirlpool System Field Testing**  
**ATTENTION INSTALLER!**  
**WHIRLPOOL SYSTEM MUST BE**  
**FIELD TESTED FOR LEAKS BEFORE**  
**FRAMING IS COVERED OR THE UNIT**  
**ENCLOSED.**

After completing all water supply, drain and electrical connections, use the following procedure to test the system and all fittings for leaks.

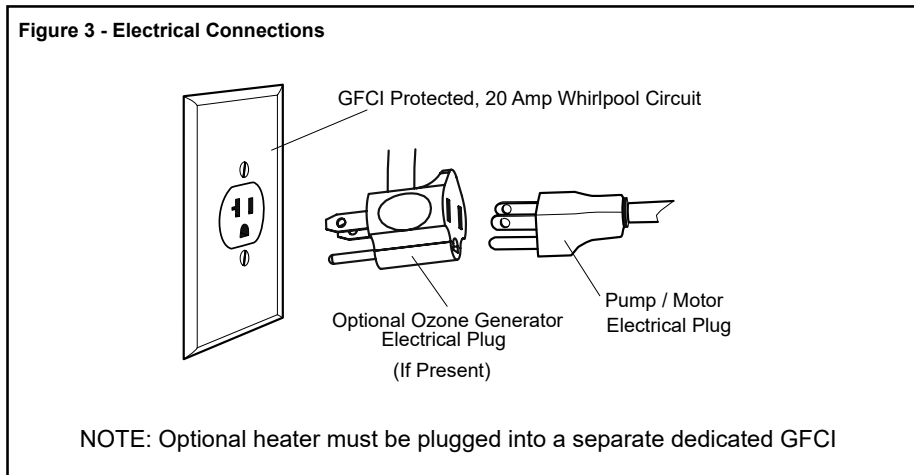
**Step 1:** Thoroughly clean tub of all debris which could damage the system, including small particles which could lodge in the jets or pump.

**Step 2:** Close the drain and fill to the top of trim ring on the highest jet.

**Step 3:** Start the whirlpool and operate continuously for 20 minutes. (1 complete timer cycle). During the cycle, adjust the air controls, (Figure 5) and the **Selectaflow™** control (Figure 10) through the complete range and check each jet for proper operation. After carefully checking each jet, fully close the air controls, **Selectaflow™** and foot and side jets (see Figures 8 & 9) and continue operation.

**Step 4:** After the timer cycle, inspect all fittings and connections for leaks before draining.

**WARNING!**  
AVOID OPERATING THE WHIRLPOOL  
SYSTEM WITHOUT ADEQUATE WATER  
IN THE TUB.





# Bodywrap Whirlpool System Assembly And Operation Guide

## Whirlpool System Care and Cleaning

Through routine use, the whirlpool system can collect residues from soap, bath additives and natural body oils. Additional deposits can also collect from minerals or particles found in the water.

### WARNING!

**NEVER USE ABRASIVE MATERIALS, NOR ABRASIVE CLEANERS ON THE WHIRLPOOL TRIM. (JETS, AIR CONTROLS AND SUCTION COVERS)**

EXTREME CAUTION is urged regarding the use of any cleaner, acid or solvent on the whirlpool system trim.

**Only use MILD liquid detergent on trim! Incorrect cleaning materials can damage finish on trim, drain/overflow and supply valves.**

**READ AND FOLLOW ALL PACKAGE LABELS AND INSTRUCTIONS!**

The following procedure is recommended to remove most deposits and avoid major accumulations inside the system piping. The actual schedule for cleaning will depend on system usage and water quality, but should not exceed 90 days.

**Step 1:** Fill tub to the top of the trim ring on the highest jet with lukewarm water. (Figure 4)

**Step 2:** Add 1 cup low-sud-sing automatic dishwasher detergent and run the whirlpool system for 20 minutes (1 complete timer cycle)

**Step 3:** Drain tub, refill with clean water and operate the system for 20 minutes (1 complete timer cycle) to rinse. (Rinse thoroughly)

Occasionally sanitize the system by following the cleaning procedure above, but substitute 1 cup of household bleach for the dishwasher detergent. (Rinse very thoroughly)

Refer to the unit installation for guidelines on the unit surface care and cleaning.

## Whirlpool System Trouble Shooting

### Whirlpool did not start?

- > Check GFCI circuit breaker.
- > Push on/off button to ensure system is turned < ON >.
- > Confirm pump-motor is plugged in.
- > Confirm air hose from on/off switch to the pump motor is securely in place and is not crimped.
- > Have wiring connections checked. (Call installer or electrician).
- > Thermal limiter (in pump) may have engaged. (Call installer or supplier).

### Pump «Hums», but no water action?

- > Check air controls, confirm open.
- > Make sure water is to the top of the trim ring on the highest jet.
- > Check highest side jet for blockage. (Rotate internal jet cartridge counterclockwise for removal).
- > Check suction line connection at pump intake port. **HAND TIGHTEN UNIONS ONLY!**
- > Have pump checked for impeller obstruction or other malfunction. (Call installer or supplier).

### Restricted flow from foot or side jet(s)?

- > Check air controls, confirm open.
- > Confirm side or foot jets are open to full flow. (Adjust center internal jet cartridge counterclockwise for removal).
- > Have pump-to-jet supply line checked for blockage. (Call installer or supplier).

### Water has excessive foaming?

- > Clean and service whirlpool system. (See **Whirlpool System Care and Cleaning** section).

### WARNING!

any Servi Cin G not mentioned above should be performed by a qualified service representative.

## Whirlpool System Operation

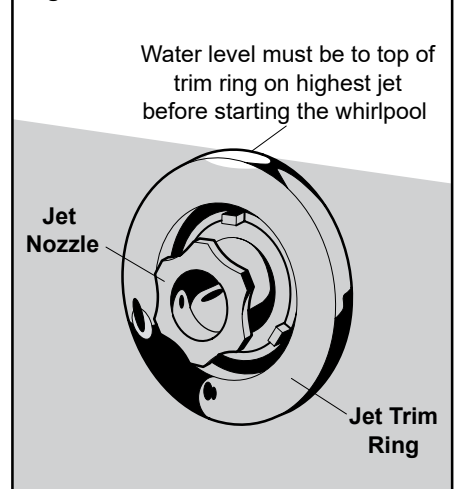
### WARNING!

**AVOID OPERATING THE WHIRLPOOL SYSTEM WITHOUT ADEQUATE WATER IN THE TUB**

Before using the whirlpool for the first time, the system should be cleaned as described in the **Whirlpool System Care and Cleaning** section of this guide.

**Step 1:** Close the drain and fill tub to desired water level. Water level must be at least to the top of trim ring on highest jet before whirlpool system is started. (See Figure 4).

**Figure 4 - Minimum Water Level**



**Step 2:** Check both air controls as shown in Figure 5. Avoid starting the whirlpool with the air controls in the fully closed position.

If the air controls are tightly closed, rotate the knob counterclockwise one-half revolution before starting the system.

**Step 3:** To start the whirlpool, gently touch the button as shown in Figure 6. The built-in 20-minute timer cycle automatically begins when the system is started.

To stop the whirlpool during the timer cycle or to restart the system, gently touch the switch button. On systems equipped with an in-line heater, the heater is automatically operated through the internal heater controls.

**Step 4:** To adjust directional flow of any side jet, move the jet nozzle to the desired position as shown in Figure 7.

**Step 5:** To change the whirlpool action during the system operating cycle, adjust air control knobs. Opening (turning counterclockwise) the air control allows more air to be mixed with the water coming out of the jet nozzle for increased whirlpool action. Closing (turning counterclockwise) the air control reduces air at the jet for less whirlpool action. (See Figure 5).

**Step 6:** The micro pulse back jets are adjusted from only one of the air control knobs.

**Step 7:** To change (increase or decrease) the flow of the foot or side jets(s), rotate the jet internal section clockwise or counterclockwise until desired flow is reached. (See Figures 8 & 9).

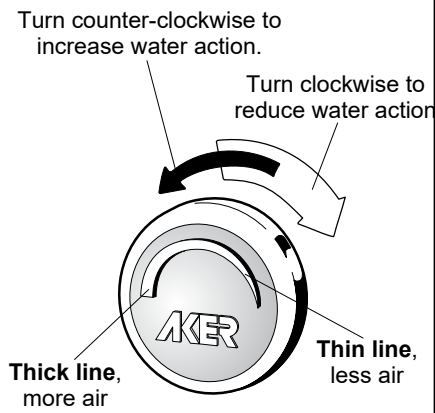
**Step 8:** Due to the size of the micro pulse back jets, no flow adjustment is provided. Pulse action of the back jets are adjusted by the air control settings.

**Note: The range of the air control knob from fully open to fully closed is 3/4 of a complete revolution.**

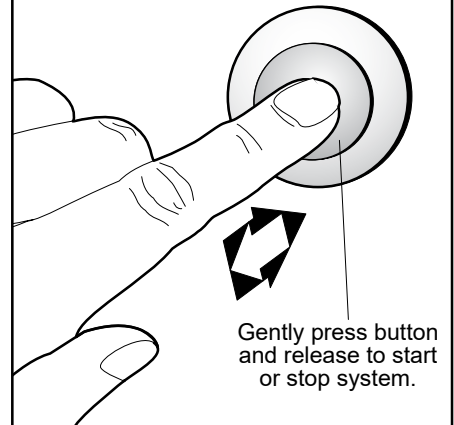
**Step 9:** Overall system flow can be adjusted with the **SELECTAFLOW™** knob by turning to the **H**igh, **M**edium or **L**ow setting (see Figure 10).

**Step 10:** Drain and thoroughly rinse the tub and flush the whirlpool system after each use to help reduce the buildup of soap scum or body oils in the system supply lines. Follow the care and cleaning recommendations listed in this guide.

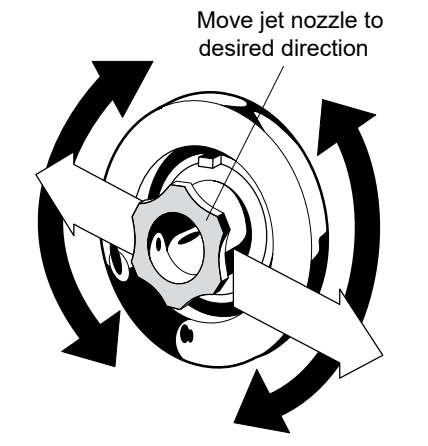
**Figure 5 - Air Control Operation**



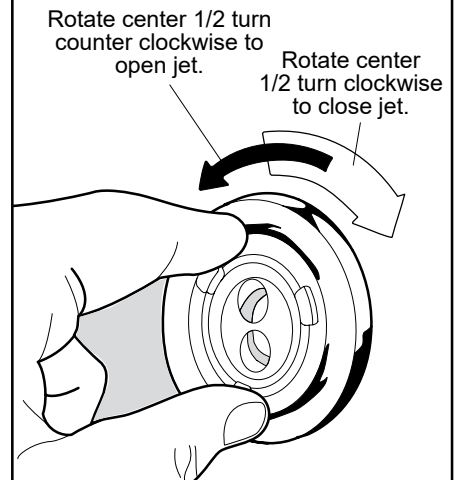
**Figure 6 - On / Off Button**



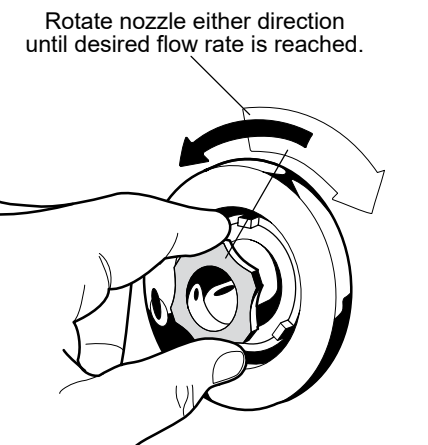
**Figure 7 - Side Jet Directional Control**



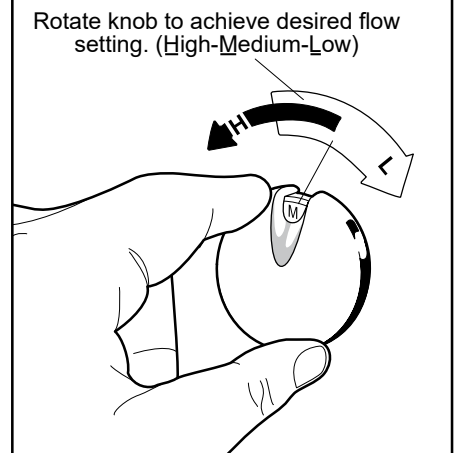
**Figure 8 - Foot Jet Flow Control**



**Figure 9 - Side Jet Flow Control**



**Figure 10 - SELECTAFLOW™ Control**





# Bodywrap Whirlpool System Assembly And Operation Guide

## LIMITED WARRANTY

MAAX Bath Inc. (hereafter "MAAX") offers the following express limited warranty on each of its products. This warranty extends only to the original owner/end user for personal household use. For commercial uses, additional limitations apply.

MAAX warrants whirlpool motor/pumps to be free from defects in workmanship and materials under normal use and service for a period of five (5) years from the initial date of purchase by the owner/end-user, contractor or builder from an authorized dealer.

MAAX warrants whirlpool and other bathtub systems to be free from defects in workmanship and materials under normal use and service for a period of two (2) years from initial date of purchase by the owner/end-user, contractor or builder from an authorized dealer.

MAAX warrants its ozenator components to be free of defects in workmanship and materials under normal use and service for a period of one (1) year from the initial date of purchase by the owner or end-user, contractor or builder from authorized dealer.

Any product reported to the authorized dealer or to MAAX as being defective within the warranty period will be repaired or replaced (with a product of equal value) at the option of MAAX, This warranty extends to the original owner/end-user and is not transferable to a subsequent owner.

Neither the distributor, authorized MAAX dealer nor any other person has been authorized to make any affirmation, representation or warranty other than those contained in this warranty, any affirmation, representation or warranty other than those contained in this warranty shall not be enforceable against MAAX or any other person.

MAAX reserves the right to modify this warranty at any time, it being understood that such modifications will not alter the warranty conditions applicable at the time of the sale of the products in question.

### Limitations

This warranty shall not apply following incorrect operating procedures, breakage or damages caused by fault, carelessness, abuse, misuse, misapplication, improper maintenance, alteration or modification of the unit, as well as chemical or natural corrosion, accident, fire, flood, act of God or any other casualty. This warranty shall not apply to stains caused by ferrous water or hard water.

The owner/end-user of the product covered by the present warranty is entirely responsible for its proper installation and electrical wiring. MAAX neither installs nor supervises the installation, nor hires a contractor for this purpose and consequentially cannot be held responsible for any default, breakage or damages caused thereby or resulting thereof, either directly or indirectly. The owner/end-user must provide access to the components of the product as described in the installation guide, so that MAAX can execute the warranty specified herein. If such access is not available, all expenses to provide said access will be the responsibility of the owner/end-user.

This warranty does not apply to products or equipment not installed or operated in accordance with instructions supplied by MAAX and all applicable rules, regulations and legislation pertaining to such installations.

MAAX strongly recommends that its products - for example, but not without limitation, shower doors and other items - be installed by professionals with experience in bathroom products. Installation of shower doors by an inexperienced person may result in glass breakage and consequently, cause personal injury or death,

MAAX is not liable for any costs, damages or claims resulting from the purchase of products that do not fit through openings or existing structures. MAAX is not liable for any costs, damages or claims resulting from defects that could have been discovered, repaired or avoided by inspection and testing prior to installation.

MAAX is not liable for personal injuries or death to any person or for any direct, special, incidental or consequential damage, loss of time, loss of profits, inconvenience, incidental expenses, labor or material charges or any other costs resulting from the use of the product or equipment or pertaining to the application of the present warranty, or resulting from the removal or replacement of any product or element or part covered by this warranty.

EXCEPT AS OTHERWISE PROVIDED ABOVE, MAAX MAKES NO WARRANTIES, EXPRESS OR IMPLIED, INCLUDING WARRANTIES OF MERCHANTABILITY AND FITNESS FOR A PARTICULAR PURPOSE OR COMPLIANCE WITH ANY CODE.

In any case, MAAX cannot be liable for any amount over and above the purchase price paid for the product by the owner/end-user, contractor or builder.

### Commercial Limitations

In addition to the above conditions and limitations, the warranty period for products installed for commercial applications or used in commercial ventures is one (1) year from the initial date of purchase by the owner/end-user, contractor or builder from an authorized dealer. MAAX is not responsible for loss of use or profit under any circumstances. If the product is used as a display, the warranty period begins when the product is placed on display.

This warranty gives no owner/end-user specific legal rights. The owner/end-user may also have other rights which vary from one state and/or province to another.

### Warranty service

In order to obtain service provided under this warranty during regular business hours, contact the dealer or distributor who sold the unit, or MAAX directly.

MAAX will provide the warranty service described above when the following conditions have been met: (1) the failure is of the nature or type covered by the warranty, (2) the user has informed an authorized MAAX Agent or Warranty Service Department representative of the nature of the problem during the warranty period: (3) conclusive evidence (e.g. proof of purchase or installation) is provided to the foregoing by the user proving that the failure occurred or was discovered within the warranty period and (4) an authorized independent service person or company representative has been permitted to inspect the product during regular business hours within a reasonable time after the problem was reported by the user.

MAAX warranty obligation shall be discharged upon tender of replacement or repair. The customer refusal to accept the tender terminates MAAX warranty obligation.

MAAX products are certified by one or more of the following certification agencies: CSA, UL, IAPMO, ULI, INTERTEK, (ETL), WARNOCK, HERSEY, US TESTING, NAHB.

Certain models are pending approval. Certification may be ended by MAAX or certification agencies without notice.

MAAX, AKER, BODYWRAP SYSTEM are registered trademarks of MAAX Bath INC. **SELECTAFLOW** is a trademark of MAAX Bath Inc.

### After Sales Service

718 Mid-Atlantic Parkway  
Martinsburg, WV 25401

Phone: 800-962-2537 • 304-263-2525

Fax: 304-263-2379

[www.akerbymaax.com](http://www.akerbymaax.com)