



ULAD-1913 ADA Lavatory Bowl

- Product Warnings**
- Safety Guidelines**
- General Information**
- Installation Procedure**
- Cleaning & Maintenance**
- Warranty Information**



**Read and Understand
Before Installing**

IMPORTANT NOTICE

IMPORTANT NOTICE: Indicates that equipment or property damage can result if instructions are not followed.



Read and Understand the Manual

It is the responsibility of any individual who installs or maintains this product to fully understand and follow proper installation and maintenance procedures. Be aware of the inherent dangers in the use of power tools when installing this product. Read and understand all Warnings, Cautions, and Important Notices in this manual.



Work Safely

DO NOT proceed if any doubt arises about the correct or safe method of performing anything found in this or other Swan Surfaces, LLC manuals. The installation of this product can require using power tools. Do not use power tools without adequate training. If necessary, hire or consult a trained professional for expert assistance before continuing.



Use Proper Tools

Always use proper tools which are in good, working condition during the installation of the Swan Surfaces, LLC products. Using tools, other than those listed, could adversely affect the integrity of this product and could result in water damage or other damage to floors, pipes, walls, or other portions of the building or home.



Use Proper Adhesives and Hardware

Only use the appropriate color-matched acrylic glue to bond this product. Only use approved screws and hardware when bonding Swanstone® components. Never use nails or unapproved screws that could adversely affect the integrity of this product.

! CAUTION

CAUTION: Indicates a potentially hazardous situation which, if not avoided, may result in injury. It may also be used to alert against unsafe practices.



Use Proper Fabrication Methods

Follow all instructions related to Swanstone® fabrication. Failure to follow such instructions could cause the components to separate after installation, resulting in personal injury. Failure to follow these instructions could also result in water damage.



Tripping Hazard

Personal injury can result from tripping over power cords, tools, or other items. DO NOT leave items laying around the work area.



Personal Protection

Be sure to use all personal protective equipment, such as dust mask, safety eyewear or goggles, and sturdy work boots, preferably with steel toes, to ensure your own safety. To prevent possible damage to your hearing, always wear ear protection, such as earmuffs or earplugs, when working around power tools.



Cutting Hazard

The installation of the Swan Surfaces, LLC product will require using power tools. Keep hands away from the cutting edge of any tool used in the installation of our product. Placing fingers in or around the cutting blades could result in serious personal injury.



Room Temperature

Allow the components and adhesives to adjust to room temperature for at least six hours before installation. The product should be installed at temperatures not less than 65°F and should not be installed in areas where the temperature may drop below freezing (32°F). Failure to follow this recommendation could adversely affect the adhesives.

Safety Guidelines

WARNING

WARNING: Indicates a potentially hazardous situation which, if not avoided, could result in serious injury or death.



Eye Protection

Be sure to use all personal protective equipment to ensure your own safety. To avoid eye injury, always wear protective glasses with side shields when using power tools. Also, make sure no one else can be injured by flying particles when using power tools.



Fire Hazard

Personal injury or death can result from a fire caused by flammable liquids, vapors, or acrylic adhesives. Cleaners or solvents can be highly explosive, resulting in personal injury or even death, when not used properly. Clean up any flammable substance immediately. Sparks or open flames can cause flammable substances to ignite. **DO NOT** smoke while working on or near any flammable substance.



Solvents Hazard

Follow all manufacturer's safety instructions for denatured alcohol. Vapors are both flammable and hazardous to breathe. Vapors may irritate eyes and nose. Direct contact with the skin can cause irritation, itching, and pain. Personal injury can result from improperly handling or use of solvents, such as denatured alcohol. Always follow the manufacturer's recommendations for the safe use of these products.



Fumes Hazard

The fumes from solvents and the acrylic adhesives used by the installer can be harmful if used in an unventilated room. Always work in a well-ventilated area. To keep the area well-ventilated, open windows and use exhaust fans. If adequate ventilation is not achievable or practical, use protective respiratory equipment.



Dust Hazard

When cutting or drilling the product, use a dust collection method which prevents dust particles from going into the air. Always work in a well-ventilated area. Always use an OSHA approved dust mask when cutting, drilling, or sanding Swan Surfaces, LLC products.



Power Tool Hazard

To prevent personal injury or possible death, always follow the electrical safety recommendations of the power tool's manufacturer. Do not use power tools in an unsafe manner. Power tools should only be connected to a circuit protected by a ground-fault circuit interrupter (GFI).



Shock Hazard

Never use electric power tools around water, condensation, or other liquids. Electric shock can cause severe burns, significant injuries, and even death. If an extension cord is required, always use an OSHA approved extension cord. Power cords should only be connected to a circuit protected by a ground-fault circuit interrupter (GFI).

General Tools

- 2-1/2 hp router (such as Porter Cable 7539).
- Drill or cordless drill (such as DeWalt DCD940KX 18V Variable Speed Reversible Driver Drill).
- Orbital sander (such as Dynabug pneumatic sander).
- Tungsten carbide grit hole saw (1-1/2 to 2 inch diameter).
- 36 grit, 60 grit, 120 grit, 220 grit, and 320 grit sandpaper pads to fit orbital sander. (Scotchbrite pads may be used instead of 320 grit sandpaper, if desired).
- Deep throat locking plier clamps (such as Vise Grip DR18 Locking Clamp).
- Flexible putty knife.
- Clean cloths.
- Denatured alcohol.



Swanstone® Part Numbers:

- VW 00020-000 — Round-over bit (1/2 inch radius)
- VW 00010-000 — Bevel bit (12 degrees)
- VW 0050-000 — Special countersink drill bit
- VW 10030-001 — Tungsten router cutting bit

Disclaimer

The photos shown in the instructions may be different from the actual sink being installed; however, the installation method is the same.

- The information contained in this manual is given free of charge. It is based upon technical data which we believe to be reliable and is intended for use by persons having knowledge of this technical area, at their own discretion and risk. Swan Surfaces, LLC assumes no responsibility for results obtained or damage incurred from the use of this material either in whole or in part by the buyer.
- This manual will give you basic instructions for the installation of the product in a step-by-step sequence that will work in most types of installations. If you have an installation application that is not covered in this manual, please call your local Swan Surfaces, LLC distributor or contact Swan Surfaces, LLC directly for additional information about your application.
- Follow all installation instructions. Failure to follow these instructions could result in personal injuries or damage to tools, cabinets, vanities, floors, or other portions of the building or home.

Installation

Vanity Sink Installation

This procedure provides instructions for under mounting a vanity sink directly to a solid surface countertop using color-matched acrylic adhesive. The sink can be the same or a contrasting color to the vanity top. The rim of an under mounted sink is designed to give a seamless appearance, as if it was molded as one piece with the vanity or bar top.

1. To prevent damaging the top surface of the countertop, cover the work table with a clean drop cloth, thin foam pad, or corrugated cardboard.
2. Place the solid surface countertop upside down on the protective cloth or pad.
3. Position the sink on the countertop. The position of the sink should meet the user's desired location.

Note: Make sure the overflow drain is located toward the front edge of the countertop, as shown.

4. Draw a pencil line around the sink rim.



5. Thoroughly sand the underside of the countertop, inside the sink outline, with 36 grit sanding pads. Sand an area 3 inches wide up to the pencil line. Remove all gloss and rough up the surface to allow for proper adhesion. Do not remove the pencil mark of the sink outline.



6. Thoroughly sand the rim of the sink with 36 grit sanding pads. Remove all gloss and rough up the surface to allow for proper adhesion.



7. Clean all the sanded surfaces with denatured alcohol. Remove all dust and let the surfaces dry completely. Do not remove the pencil lines used to locate (position) the sink on the countertop.



IMPORTANT NOTICE

Before glue-up, wipe all the sanded surfaces with a clean cloth and denatured alcohol. Remove all dust and let the surfaces dry completely.

8. Select the appropriate matching color acrylic adhesive.

IMPORTANT NOTICE

Before applying a two-part adhesive onto a Swanstone® component, always dispense some of the adhesive into a waste container. Dispense enough adhesive to allow complete mixing of the two-part adhesive in the corkscrew design nozzle. Typically, freshly mixed adhesive has a 10 minute working time when dispensed onto components to be joined.

Note: The Swanstone® acrylic adhesive has a working time of 10 minutes and a cure time of one hour. Gather all the tools needed before beginning glue-up.

9. Pre-drill the sink alignment screw holes.
 - a. Place the sink on the underside of the countertop. Make sure the overflow drain is toward the front edge of the countertop.
 - b. Use the VW 0050-000 special drill bit to drill two pilot holes into the underside of the countertop, through two of the sink rim openings, 180 degrees apart.



- c. Remove the sink and use compressed air and denatured alcohol with a clean cloth to remove all dust and debris from the holes, sink rim, and vanity surface.

10. Dispense several beads of the appropriate color-match acrylic adhesive onto the sanded surface of the countertop, using the pencil outline of the sink as a guide.



11. Use a spread stick to smooth out the adhesive. The adhesive should be just thick enough to hide the countertop surface underneath.



Note: Wear protective disposable gloves when working with the two-part acrylic adhesive. Remove excess acrylic adhesive with a flat blade putty knife. Clean up excessive acrylic adhesive with denatured alcohol and a clean cloth.

Note: Adhesive that is spread too thick will not produce a proper joint. Adhesive that is spread too thin can result in gaps in the joint and a weak bond.

Installation

IMPORTANT NOTICE

To avoid damaging the sink or vanity top, do not overtighten the screws and do not use a screw that is too long. Use caution if using a variable speed drill to install the screws. Install the screws just until they are tight.

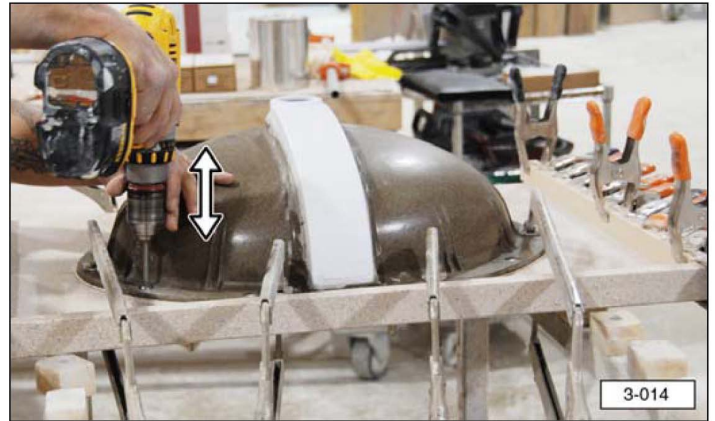
12. Position the sink on the adhesive and wiggle it slightly to seat it on the countertop. Insert the two screws in the pre-drilled holes and carefully tighten.



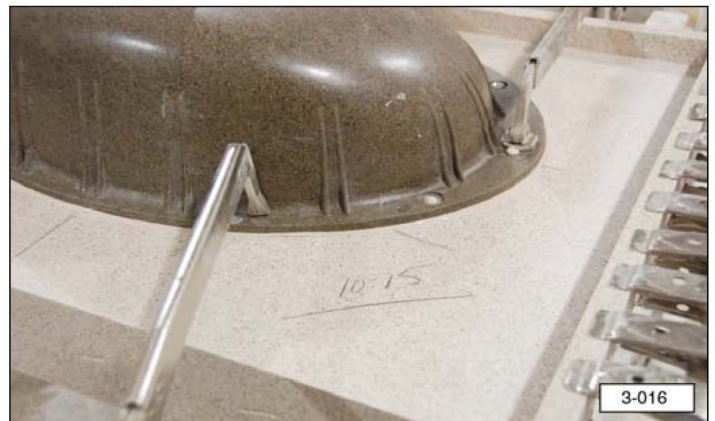
13. Clamp the sink in place using six to eight large deep-throat clamps applied to the rim of the sink and countertop, as shown.



14. Once the sink is securely clamped in place, carefully remove one of the two screws from the rim of the sink, then retighten that screw. Repeat for the second rim screw. This will allow the clamps to apply full pressure to the sink rim, without having the sink slide out of position.



15. Record the time the sink was attached to the countertop and allow the adhesive to cure for at least one hour.



Note: Be very careful not to disturb the acrylic adhesive joints during the one hour cure time.

16. Once the adhesive has cured, remove the clamps. Use the Swanstone® Part # VW 050-000 special countersink drill bit and drill pilot holes in the remaining sink rim screw locations. Install the appropriate screw in each of the holes and tighten securely.



Sink Cut-Out

With the sink secured to the underside of the countertop, the opening for the under mount sink can be cut and machined.

IMPORTANT NOTICE

Before cutting the starter hole in the vanity top, make sure the hole location will not cause the hole saw to damage the sink bonded to the underside of the vanity top. To avoid damage to the sink, locate the opening towards the center of the sink.

1. Place the sink and countertop on a secure work surface. Use a 1 inch to 2 inch diameter tungsten carbide tipped hole saw to cut an opening in the center of the vanity top, as shown.



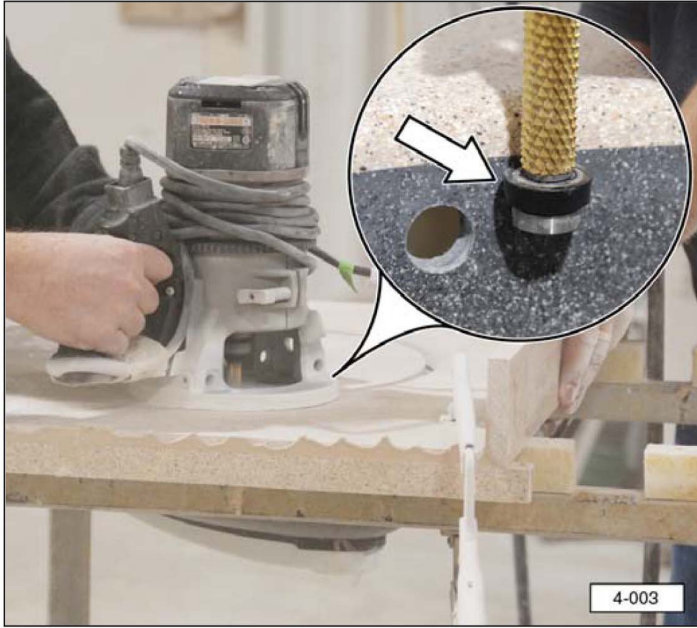
2. Install the Swanstone® part # VW 10030-01 bit with roller bearing into the router.



Installation

IMPORTANT NOTICE

Before cutting the opening in the countertop, make sure the depth of the router bit is adjusted to allow the bearing to ride against the surface of the sink, just below the seam. To avoid damage to the sink and countertop, do not cut against the rotation of the router bit (from right to left) and do not allow the router bit bearing to travel into the sink drain overflow opening.

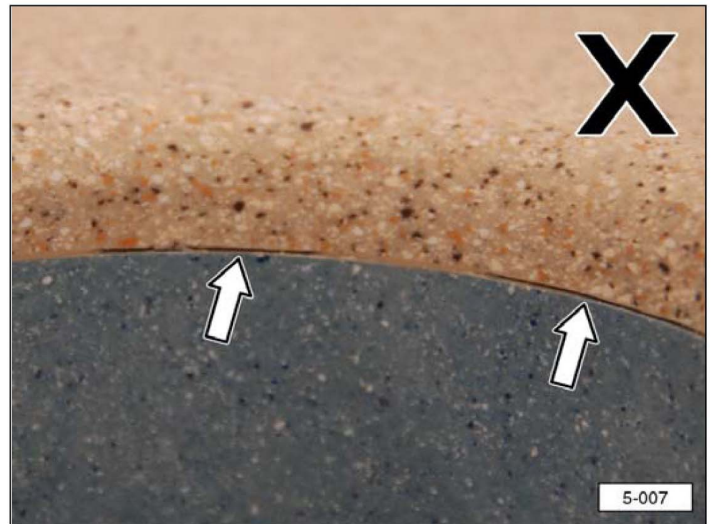


3. Cut the opening in the countertop.
 - a. Start the router in the drilled opening and work outward until the roller bearing contacts the inside surface of the sink.
 - b. Carefully guide the router, cutting from left to right, while keeping the router level and firmly against the upper surface of the vanity top. Keep the bearing in light contact with the sink, just under the vanity top.
 - c. Remove and discard the cut out. Make a second pass with the router, cutting from left to right, to ensure that all excess countertop material has been removed.
 - d. Vacuum the shavings from the sink and use denatured alcohol and a clean cloth to wipe away any dust before continuing.

Note: Marks on the sink caused by the router bit bearing will be removed during the sanding process in a later section.



4. Inspect the seam between the sink and countertop, looking for any voids or cracks. If defects are found, the sink should be removed and reglued.



5. Install the 12 degree bevel bit in the router. Use a Swanstone® part # VW 00010-000 bit with roller bearing.



IMPORTANT NOTICE

Before beveling the opening in the countertop, make sure the depth of the router bit is adjusted to allow the bearing to ride against the sink, just below the seam. To avoid damage to the sink and countertop, do not cut against the rotation of the router bit (from right to left), and do not allow the router bit bearing to travel into the sink drain overflow opening.

6. Bevel the opening in the countertop.
 - a. Start the router and move it until the roller bearing contacts the inside surface of the sink.
 - b. Carefully guide the router, cutting from left to right, while keeping the router level and firmly against the upper surface of the countertop. Keep the bearing in light contact with the sink, just under the seam.
 - c. Make a second pass with the router, cutting from left to right, to ensure that all excess countertop material has been removed.
 - d. Vacuum the shavings from the sink and use denatured alcohol and a clean cloth to wipe away any dust before continuing.



Note: Marks on the sink caused by the router bit bearing will be removed during the sanding process in a later section.



7. Install the 1/2 inch round over bit in the router. Use a Swanstone® part # VW 00020-000 bit with roller bearing.



Finishing

IMPORTANT NOTICE

Before rounding the opening in the countertop, make sure the depth of the router bit is adjusted to allow the bearing to ride against the sink, just below the seam. Set the depth of the router bit to avoid cutting into the top surface of the countertop, causing an unsightly groove. To avoid damage to the sink and countertop, do not cut against the rotation of the router bit (from right to left), and do not allow the router bit bearing to travel into the sink drain overflow opening.

8. Round over the opening in the countertop.
 - a. Start the router and move it until the roller bearing contacts the inside surface of the sink.
 - b. Carefully guide the router, cutting from left to right, while keeping the router level and firmly against the upper surface of the countertop. Keep the bearing in light contact with the sink, just under the seam.
 - c. Make a second pass with the router, cutting from left to right, to ensure that all excess vanity top material has been removed.
 - d. Vacuum the shavings from the sink and wipe away any dust before continuing.



Note: Marks on the sink caused by the router bit bearing will be removed during the sanding process in a later section.



Finish Sand Sink and Countertop

With the sink opening cut into the countertop, the sanding process will remove excess adhesive, blend the edges, and give the Swanstone® a uniform, finished appearance.

Sanding the Swanstone® to achieve a smooth ever finish is a three step process using 120, 220, and 320 grit sandpaper and a palm sander. Scotchbrite pads can be used in place of the 320 grit sandpaper, if desired.



IMPORTANT NOTICE

To avoid damaging the Swanstone® surfaces, always remove sanding dust and wipe all surfaces with denatured alcohol and a clean cloth between sanding with each grade (grit) of sandpaper. This will ensure a smooth, even finish on the Swanstone® surfaces.

- 1 Use 120 grit sanding pads to remove router bit bearing marks, and to blend edges and seams.

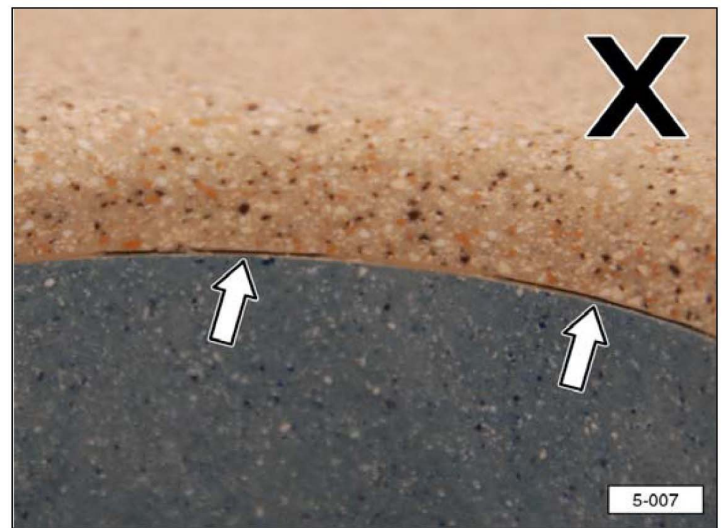
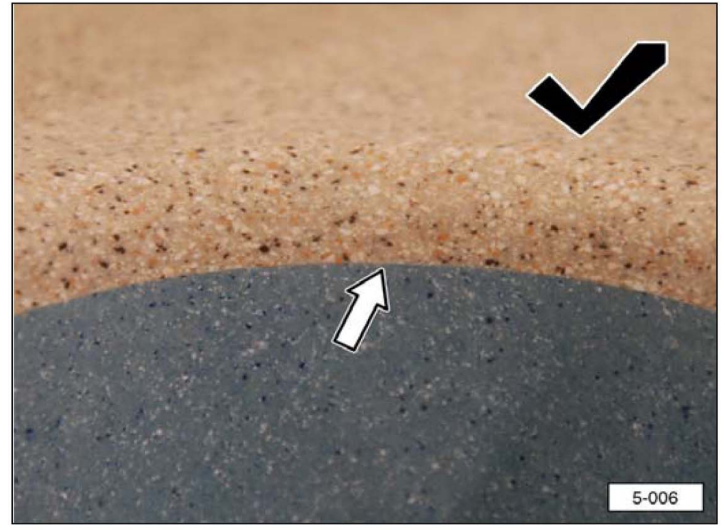


- 2 Use 220 grit sandpaper to remove sanding scratches and open up the surface to fully reveal the Swanstone® pattern. Sand the entire surface of the sink and countertop.



- 3 Use 320 grit sandpaper or Scotchbrite to achieve a final finish. Sand the entire surface of the sink and countertop.

Note: Inspect all joints and seams, looking for gaps or cracks. If voids in the adhesive joints are found, the components should be taken apart and reglued.



Maintenance

Product Care and Cleaning

Swanstone® solid surface products are stain and abrasion resistant; however, the finish requires reasonable care.

IMPORTANT NOTICE

Abrasive cleaners, such as Comet or Ajax, are recommended for Swanstone® solid surface countertops.

Swanstone® Product Care & Cleaning sample kits are available through most Swanstone® dealers. The kits include samples of approved cleaning products and instructions.



Day-To-Day Cleanup

Wash regularly with warm water. Use a soft cloth with a mild detergent such as Handy Andy, Mr. Clean, or Lestoil. Always rinse off cleaners within five minutes of application. Scratch-free pads made of nylon, saran, or polyethylene may be used.

IMPORTANT NOTICE

To avoid damage to the surface, NEVER use steel wool or metal scouring pads on Swanstone solid surface material.

Hard to Remove Stains

Use abrasive cleaners such as Ajax, Bon Ami, or Bar Keepers Friend or use an abrasive pad such as Scotchbrite.

For the most stubborn sink stains, fill the Swanstone® sink about one quarter full with a 50/50 solution of bleach and water. After 10 or 15 minutes of soaking, drain the solution from the sink as you wash and rinse the sink.

Marks or Discolorations

White automotive rubbing compound may be used to remove stubborn marks or discolorations.

Scratches

Use sandpaper, starting with 120 grit (coarsest) and going to 220 grit and 320 grit until scratches disappear. Blend the area with an abrasive finishing pad, such as Scotchbrite.

Use of the above products will not damage the Swanstone® solid surface material. Always follow label directions. For more information on cleaning and maintaining Swanstone® products, contact the Swanstone® representative in your area.

Warranty

LIMITED WARRANTY FOR RESIDENTIAL APPLICATIONS

If a Swan Surfaces, LLC product covered by this warranty is found to be defective in materials or workmanship, after inspection by an authorized Swan Surfaces, LLC representative, we will repair, or at our option, exchange the product for a similar model. This warranty extends for a designated period of time, so long as it remains in use in its original place of installation.

This warranty covers products installed in accordance with the Swan Surfaces, LLC installation instructions, used as recommended, and not damaged due to misuse, abuse, or improper installation. It does not apply to any seams or changes made to the product by professional tradesmen or fabricators.

The warranty applies only to the original purchaser and installation of these products in residential applications. It does not apply to commercial applications.

The Swan Surfaces, LLC option to repair or exchange the products under this warranty does not cover any labor or other costs of removal or installation, nor shall the Swan Surfaces, LLC be responsible for any other incidental or consequential damages attributable to a product defect or to the repair or exchange of a defective product.

ALL IMPLIED WARRANTIES OF MERCHANTABILITY AND FITNESS FOR A PARTICULAR PURPOSE WHICH EXCEED THE AFORESAID OBLIGATIONS ARE HEREBY DISCLAIMED BY SELLER AND EXCLUDED FROM THIS AGREEMENT

Limited Lifetime Warranty

ADA Lavatory Bowl

**LIMITED WARRANTY
FOR COMMERCIAL APPLICATIONS**

If a Swan Surfaces, LLC product covered by this warranty is found to be defective in materials or workmanship, after inspection by an authorized Swan Surfaces, LLC representative, we will repair, or at our option, exchange the product for a similar model. This warranty extends for a designated period of time, so long as it remains in use in its original place of installation.

This warranty covers only products installed in accordance with the Swan Surfaces, LLC's installation instructions, used as recommended, and not damaged due to misuse, abuse, or improper installation. It does not apply to any seams or changes made to the product by professional tradesmen or fabricators.

The warranty applies only to the original purchaser and installation of these products in commercial applications.

Swan Surfaces, LLC's option to repair or exchange the products under this warranty does not cover any labor or other costs of removal or installation, nor shall the Swan Surfaces, LLC be responsible for any other incidental or consequential damages attributable to a product defect or to the repair or exchange of a defective product.

**ALL IMPLIED WARRANTIES OF MERCHANTABILITY
AND FITNESS FOR A PARTICULAR PURPOSE
WHICH EXCEED THE AFORESAID OBLIGATIONS
ARE HEREBY DISCLAIMED BY SELLER AND
EXCLUDED FROM THIS AGREEMENT**

25-Year Limited Warranty

ADA Lavatory Bowl

**Save these Installation Instructions for future reference.
They provide important information on cleaning and
maintenance of Swan Surfaces, LLC products.**

