

2 BEDROOM | 2610-14 - MOORHEAD

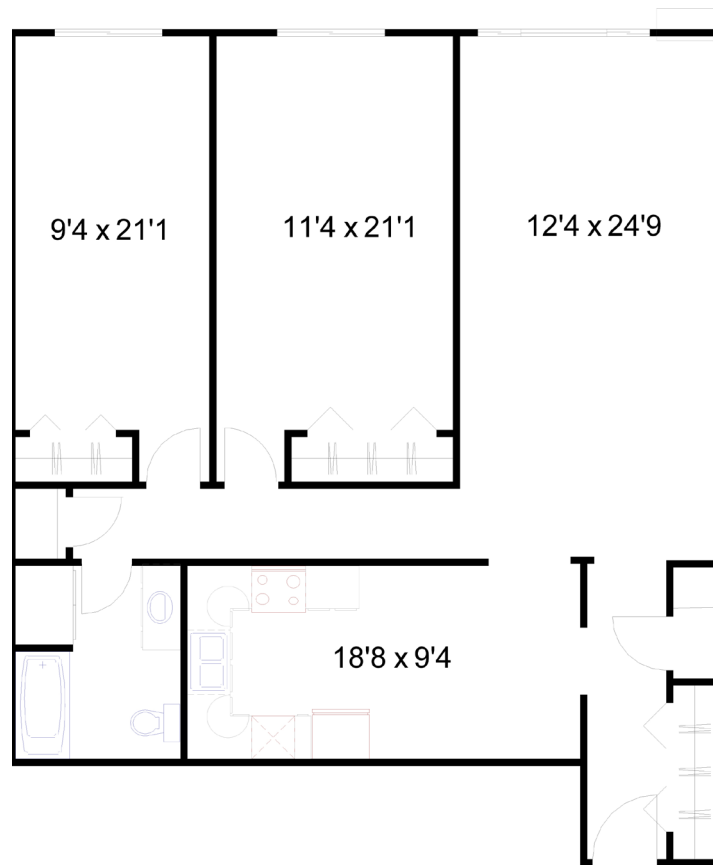
2610-2614 11TH ST S | MOORHEAD, MN



FEATURES & AMMENITIES

- Extra Large Apartments!
 - Heat & Water Paid
 - Garage Included
 - Full Kitchen, Range, Microwave, Dishwasher, etc.
 - Washer & Dryer In-Unit *
 - Balcony *
 - 24 Hour Fitness Center
 - Community Room
 - Controlled Access
 - 24 Hour Video Surveillance
 - Laundry On Site
 - No Smoking On Entire Premis
 - No Pets Allowed
- * Included in Select Units

2 BEDROOM | 1 BATH | 1,247 SQ FT



SKAFF
APARTMENTS

Moorhead Office | 1102 28th Ave S | Moorhead, MN 56560

WWW.SKAFFAPARTMENTS.COM | 218-236-1193