

2 BEDROOM | 1208N - MOORHEAD

1208 28TH AVE S | MOORHEAD, MN

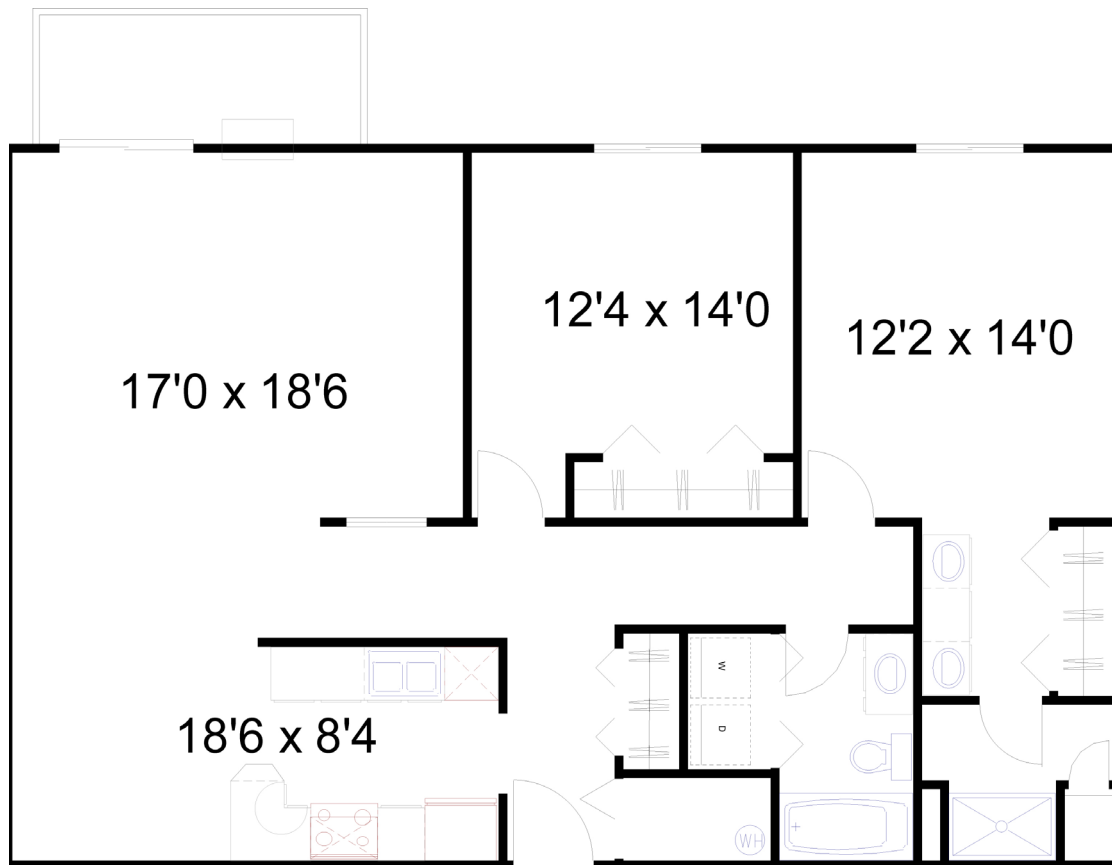


## FEATURES & AMMENITIES

- No Smoking On Entire Premis
- Water Paid
- Single or Double Garage Included
- Stainless Steel Appliances\*
- Full Kitchen, Glass-top Range, Microwave, Dishwasher, Ice maker, etc.
- Washer & Dryer In-Unit
- Balcony
- 24 Hour Fitness Center
- Community Room
- Controlled Access
- 24 Hour Video Surveillance
- No Pets Allowed

\* Included in Select Units

2 BEDROOM | 2 BATH | 1,165 SQ FT



**SKAFF**  
APARTMENTS

Moorhead Office | 1102 28th Ave S | Moorhead, MN 56560

[WWW.SKAFFAPARTMENTS.COM](http://WWW.SKAFFAPARTMENTS.COM) | 218-236-1193