

HVAC & HYDRONICS

Product Catalog





ABOUT AQUIFER

The Aquifer Group of Companies provides a comprehensive range of HVAC and Hydronics products and services, catering to both commercial and residential projects across Saskatchewan.

With warehouses and expert teams in Saskatoon, Regina, Prince Albert, and North Battleford, we ensure timely support and availability wherever your project takes you.

Our commitment goes beyond just supplying products. Our knowledgeable staff are industry experts who collaborate with you to design systems tailored to your project's unique requirements.

We partner with trusted brands like Continental Heating & Cooling, Lochinvar, Viessmann, White Rodgers by Copeland, Bell & Gossett, Uponor, and more, so you can have confidence in the quality and reliability of the solutions we provide.

AQUIFER WEBSTORE

www.aquiferdist.com

Our webstore is your one stop shop for all your Aquifer information. Not only can you place orders for products but you can also pay your invoices, request quotes and pricing as well as create quotes for your customers. With nearly all our products available online you can easily place your every day orders from the comfort of your home or office!

WEBSTORE FEATURES

- Quote Your Customers
- Real-Time Pricing
- Live Stock Checks
- Easy Invoice Payments
- Request Quote From Us
- Make Product Lists

SCAN TO REGISTER FOR AN ACCOUNT

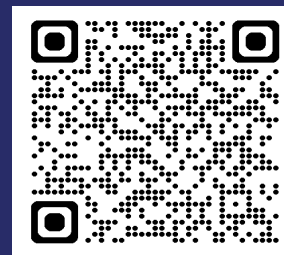


TABLE OF CONTENTS

HVAC

- 5** NEW PRODUCT
- 6** FURNACES
- 7** AIR CONDITIONERS & A-COILS
- 8** HYBRID & DUCTLESS HEAT PUMPS
- 9** HRV
- 10** AIR HANDLER SYSTEMS
- 11** UNIT & TUBE HEATERS
- 12** VENTING
- 13** TIN
- 14** REGISTERS, GRILLES & FILTERS
- 15** GAS LINE, RISERS & FITTINGS
- 16** UNIVERSAL PARTS
- 17** TOOLS
- 18** COMMERCIAL PRODUCTS
- 19** SERVICES
- 20-21** FULL LINE OFFERING

FIREPLACES

- 23** CONTINENTAL & NAPOLEON
- 24** TRAVIS INDUSTRIES

HYDRONICS

- 27-29** BOILERS
- 30-31** RENEWABLE ENERGY HEATING & COOLING
- 32** RADIANT HEATING & COOLING SYSTEMS
- 33-42** ACCESSORIES & COMPONENTS
- 43-44** COMMERCIAL PRODUCTS
- 45** SERVICES
- 46-47** FULL LINE OFFERING

HVAC

NEW PRODUCT ANNOUNCEMENT



AQUIFER IS EXCITED TO ANNOUNCE THAT WE ARE NOW STOCKING SURE COMFORT ROOFTOP UNITS FOR COMMERCIAL APPLICATIONS!

PACKAGED G/E ROOFTOP UNIT

RGECZR/ZT models in 3-5 tons offer up to 16.2 SEER2/17 SEER and 12 EER2/12.5 EER. RGECZT models in 6 tons offer up to 14.6 IEER and 11.2 EER. RGEDZR (7.5, 8.5 & 10 Ton)

Engineered with installability and serviceability in mind, Renaissance makes easier, drop-in replacement possible in most cases without a curb adapter. Once installed, building owners and contractors will enjoy the serviceability advantages Renaissance offers with our ServiceSmart Package that includes a Qwik-Clean Drain Pan, the Qwik-Slide Blower Assembly, and PlusOne® Diagnostics with Dual 7-Segment LED Display.



FEATURES:

- Factory charged with R-410A HFC refrigerant
- Scroll compressors with internal line break overload and high pressure protection
- Convertible airflow – vertical down flow or horizontal side flow
- Forkable base rails for easy handling and lifting
- Cooling operation up to 125°F ambient
- Two-stage gas heat input with direct spark ignition system, solid state furnace controls, and optimized induced draft combustion
- MicroChannel evaporator and condenser coil
- ServiceSmart package includes: Qwik-Change Flex-Fit Rack™ Qwik-Slide Blower Assembly™ Qwik-Clean Drain Pan™
- Overflow condensate sensor
- Diagnostics with Dual 7-Segment LED Display to meet code compliance
- Standard Modbus interface
- One-piece top cover and base pan with drawn supply and return opening
- Two-piece control door
- ¼ turn fasteners on filter access door
- Color-coded and labeled wiring
- External lockable gauge ports
- TXV refrigerant metering system
- Solid-core liquid line filter drier
- High pressure and low pressure/loss of charge protection with built-in Smart Logic
- Insulation encapsulated throughout entire unit
- 3-6 ton ZT models include one two-stage compressor
- 3-5 ton ZR models include one single-stage compressor
- Model RGEDZR has a single-stage compressor
- MERV 8 & MERV 13 filters are available as an accessory

C97 SERIES The Continental Tech Pro C97 Series gas furnace is a two-stage operation that enhances energy efficiency, with a low-fire stage for most days and a high-fire stage for colder days. Optional UV-C air sanitization is available.



FEATURES:

- 35,000 - 105,000 BTU models available
- Patented SureView™ burner system window to view the flames
- Built-in LED service lights that come on automatically
- High-efficiency variable speed blower motor
- High-quality stainless steel primary and secondary heat exchanger
- Self-diagnostic integrated furnace control (IFC)



C96 SERIES The Continental C96 Series gas furnace, Energy Star Rated* (excluding WPV120T5BA-C), is a two-stage system. Designed for easy maintenance and service, its modular design and flexible fit options make installation efficient.

FEATURES:

- 35,000 - 120,000 BTU models available
- Patented SureView™ burner system
- Two-stage control: first-stage start-up operates at 70% of full heating capacity for maximum fuel savings
- Self-diagnostic integrated furnace control (IFC)

C95 SERIES The Continental C95 gas furnace is one of the most reliable units on the market. The EnerSave Pro motor boasts energy efficiency and WHISPER QUIET operation.



FEATURES:

- 30,000 - 100,000 BTU models available
- Models feature a multi-speed motor with reduced electrical consumption
- Self-diagnostic integrated furnace control (IFC)
- Single stage heating

*All models include Flexfit™ (upflow, right, left, and down)

**Propane conversion kits available for all models

***All models include limited lifetime heat exchanger warranty

AIR CONDITIONERS & A-COILS

CT SERIES 13.4 The CT 13.4 SEER2 Central Air Conditioner ensures optimal indoor comfort during hot seasons. Its micro-channel condenser coils make it compact and efficient. Durable aluminum components extend its lifespan and simplify maintenance. Specially swept fan blades enhance airflow and ensure WHISPER QUIET operation.

FEATURES:

- R-410A refrigerant and high-efficiency compressor
- Industry leading Copeland scroll compressor
- WHISPER QUIET™ Operation
- Highest quality filter drier in the industry
- Swept Fan Blades
- Permanently lubricated PSC motor
- Motor assembly is removable from top of unit
- Service valves and refrigerant connections are located outside the cabinet for easy accessibility and servicing
- Electrical connections are accessible through a removable service panel



CONTINENTAL



CASED & UNCASED EVAPORATOR COIL

ADP premier evaporator coils match perfectly with your system, providing an upgrade over standard-matched coils. They are uniquely designed to save customers time on, installation while ensuring a leak-free system. ADP premier evaporator coils are the perfect solution for your application.

FEATURES:

- Built-in plenum flanges with rounded corners allow for fast and safe installation
- SKU Optimization: up-flow, downflow, multi-position configurations; AL & CU coil options support local markets
- Leak-Free rubber plugs: Suction and liquid lines do not require cutting for installation
- Non-captive front panels provide fast and easy coil access without the need to cut refrigerant lines
- 1% or less cabinet air leakage for quick and easy installation without the need to add tape to seams



HYBRID & DUCTLESS HEAT PUMPS

WSE SERIES I7 Continental Cold Climate Air Source Heat Pumps operate year-round, providing home comfort in all seasons. Contoured blades ensure quiet operation and efficient airflow. Paired with a furnace, they form a hybrid heat system for energy cost savings.

FEATURES:

- 2 to 5 tons of heating & cooling capacity
- Provide heating for your home when temperatures dip down as low as -30°C (-22°F) as well as comfortable cooling when temperatures reach as high as 54°C (129.2°F)
- Entire unit tested in the factory before shipment
- Can be installed on the wall to save space
- Low vibration design for quiet operation
- Compatible with any furnace or coil match-ups with a controller having 24V communication



EQHUB SMART THERMOSTAT WSC43BA-KT Smart Thermostat, is the brain of dual fuel Hybrid Heating Solutions. The smart switching technology will determine the best time to use the Continental Heat Pump or a Continental Furnace using propane or gas. Individual fuel selection ensures the thermostat is selecting the most appropriate heat source for the mode selection.

CDH SERIES No ductwork? No problem. Continental's Ductless Heat Pumps offer high-efficiency comfort in a versatile package. When you don't have ducting or access to natural gas, you can still enjoy whole-home comfort with Continentals ductless heat pumps. The perfect solution to heat and cool your home where installing or extending ductwork is unfeasible.

Ideal Ductless Solutions:

- Primary living areas such as main bedrooms and living rooms
- Hot or cold rooms
- Office spaces
- Rooms with poor air flow
- Renovations and remodeling
- Basements, attics and garages



HERO FRESH AIR APPLIANCES HRV for balanced ventilation in single- and multi-family homes HERO® appliances supply fresh, tempered air into indoor spaces while removing excess moisture, ensuring a healthy, comfortable living environment.



FEATURES:

- Top-mounted connections with rubberized duct seals
- Unobstructed front access for fast & easy maintenance
- Energy-efficient counterflow core to provide exceptional performance
- Multi-speed operation to provide exact airflow
- Compatible with the ECO-Touch® AUTO IAQ Programmable Wall Control
- Limited warranty (limited lifetime on counterflow core, 7 years on motors, and 5 years on parts)



 **fantech**® **INLINE DUCT FANS** Exterior or interior, resin or metal, EC or AC, and more. Their circular duct fan products fit a variety of applications.



Inline duct fans are known for their economical use of energy and excellent ease of control. Circular, square, rectangular, or exterior-mounted, resin or metal duct fans are available for various supply and exhaust air applications.

Accessories available include electrical and mounting accessories, controls, and more.

HUMIDIFIER AprilAire whole-house humidifiers balance your home's humidity to help improve sleep and dry skin, enhance productivity, and keep you protected against airborne viruses. Additionally, AprilAire Humidifiers help preserve your home and any contents susceptible to cracking and warping due to low humidity levels.

FEATURES:

- Humidity control
- Fresh air ventilation
- Air purification
- Radon control
- Controls and zoning
- UVC sanitization

Aprilaire®



AIR HANDLER SYSTEM

HEZ SERIES This innovative product features our newly developed PSB (Pressure Sensing Board) motor controller which is pre-set for cooling, heating, and recirculation, but is field programmable providing an infinitely variable fan output. Zoning is simple as the VDC signal will vary depending on system load, adjusting power input based on demand. Fitting where others don't, the HE-Z series will become your ultimate choice in a multi-functional air handler.

Hi-Velocity
Systems™

FEATURES:

- High Efficiency programmable Energy Smart Motors with Variable Frequency Drive
- Air Handler Units are modular and can be installed easily in a variety of orientations, with many available options for heating and cooling
- The flexible duct delivers air under a greater pressure than a conventional system. This increase in pressure forces the mixing of the air in the room, eliminating stratification
- The flex duct is insulated to prevent heat loss/gain and has a sound absorbing inner core to deliver the air whisper quiet
- Smaller duct also allows for greater flexibility in installations while saving space.

Heating, Cooling and
IAQ Systems

Hi-Velocity
Systems™

by Energy Saving Products Ltd.

Canadian
Manufacturer



Superior Indoor Air Quality
and Climate Control

HE-Z Series
Zoning Air
Handler

1, 2, 3 or 4
Supply Collars

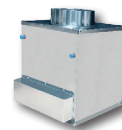


Small Diameter
Flexible Duct

Clean Comfortable Air with
no Hot & Cold Spots!



3-Stage HEPS In-Duct
Air Purification System



CUBE Series
1-2 Tons



HE-P Series
10 Tons

Now Available - Our Smallest and
Largest Capacity Air Handlers

UNIT & TUBE HEATING

UNIT HEATERS ADP Unit Heaters are engineered for maximum efficiency, increased reliability, and peak performance. Each unit is designed for simplified installation. The patented heat exchanger minimizes air resistance for even heating. ADP Unit Heaters are the ideal choice for a wide range of commercial and residential applications.



FEATURES:

- Patented heat exchanger with up to 85% thermal efficiency on LP models to deliver comfort with maximum efficiency
- 30% quieter than previous models
- 180° installation capability
- Self-Diagnostic DSI Control Board featuring an LED display
- 30,000 – 400,000 BTU/h capacity meeting a wide range of commercial and residential application requirements
- 2-stage operation with improved efficiency



RADIANT TUBE HEATERS Pre-assembled heavy duty garage heater for an easy installation right out of the box. Infrasa's residential garage heater provides the perfect comfort for your garage and workshop all year round and eliminates condensation. The innovative infrared radiant tube heater design of the P40-R offers an efficient heavy duty garage heater that is economical yet ideal for garage and workshop applications by keeping your garage floor, tools, and equipment warm and dry throughout the winter.



FEATURES:

- Line voltage and 24-volt thermostat ready
- Whisper-Jet technology makes the heater extremely quiet
- Easy access to the "clamshell" burner box
- Reflector & end caps improve IR heat
- Available from 45mbh to 200mbh reduction (UHCM 250-400 models)



VIEW ALL VENTING OPTIONS AVAILABLE AT AQUIFER DISTRIBUTION ON THE NEXT PAGE

VENTING

NOVAVENT Manufactured by Z-Flex; NovaVent® is a Special Gas Vent system suitable for venting Category II, III, or IV Gas Burning appliances and Direct Vent units.

Common Uses include:

- Gas-fired tankless water heaters
- Unit heaters
- Other gas-fired Category II, III, & and IV equipment



BELVENT Belvent Manufacturing Ltd. has supplied the HVAC industry with top of the line sheet metal products for over 40 years. Products include; galvanized products for residential, commercial and industrial use, including Type A chimneys, Type B gas vents, pipes, rain caps, and much more.

GVS-65 Westlake Pipe & Fittings' GVS-65 certified Flue Gas Venting PVC Pipe, when used as a complete pipe & fittings system, is rated for temperatures up to and including 65°C.

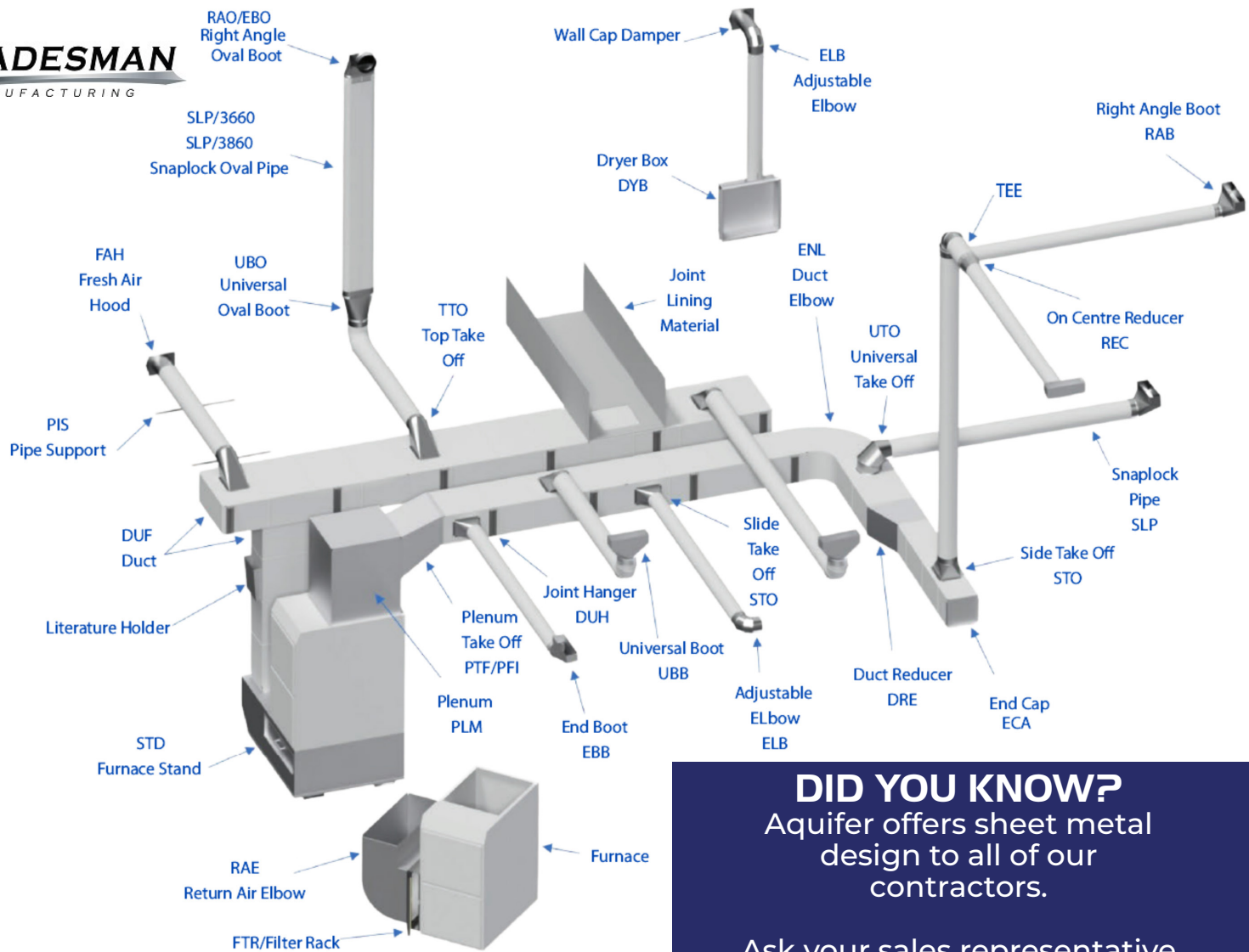
Common Uses include:

- Approved as Type BH Class II venting system for gas-fired appliances
- Made to Schedule 40 pipe dimensions
- Available in sizes of 1½", 2", 2½", 3" and 4" with a complete range of fittings and accessories



PVC CEMENTS & PRIMER Westlake Pipe & Fittings' PVC Cements & Primers are ideal bonding agents for use in residential, industrial and commercial plumbing applications. These solvent cements support a broad range of PVC pipe and other thermoplastic piping.

TRADESMAN
MANUFACTURING



DID YOU KNOW?

Aquifer offers sheet metal design to all of our contractors.

Ask your sales representative for more information.

FURNACE STAND WITH FILTER

The Tradesman Furnace Stand is designed to be used as a stand for the furnace to sit off the floor. Made of 24GA galvanized complete with door for the most efficient way of filtering air passing through a furnace.



FEATURES:

- Made in Canada
- 100% Laser-cut for accuracy
- Options for multiple filter widths
- No need to cut hole in the side of furnace
- Draws return air from bottom of furnace
- Can accommodate 8", 10", or 12" wide return air duct

REGISTERS, GRILLES, & FILTERS

PLASTIC

PrimexVents uses only high-grade resin with the maximum amount of UV protection, our vents stay looking great for years and years. Plastic is also impact resistant, even at low temperatures. PrimexVents vents won't dent or crack when hit with a baseball or hockey puck. They maintain their "like new" look even after a hail storm that would dent a metal vent.

 **PrimexVents**



METAL

New registers and grilles are among the quickest and least expensive home improvements you can make. Select from imperials smooth and textured rust-proof finishes in a variety of designs and styles to ensure household airflow is at peak efficiency, adding comfort and appeal to your décor.

 **Imperial**
Manufacturing Group®



MERV II FURNACE FILTERS

MERV 11 furnace filters offer an excellent balance between air quality and efficiency. They capture a wide range of airborne particles, including dust, pollen, mold spores, and pet dander, which are common allergens. They provide a good upgrade from lower-rated filters, offering enhanced filtration without significantly increasing energy costs.



GAS LINE, RISERS, & FITTINGS

GAS LINE & RISERS Our premium gas lines and risers offer exceptional durability, safety, and ease of installation, making them ideal for a wide range of residential, commercial, and industrial applications. Built from high-quality materials like stainless steel and polyethylene, they resist corrosion and extreme conditions while meeting stringent industry standards. With versatile options and customization available, our products ensure reliable and efficient gas distribution for any project.



GAS FITTINGS Wardflex fittings are designed for seamless connections in flexible gas piping systems, offering superior reliability and ease-of-use. Crafted from high-quality materials, these fittings ensure secure, leak-proof joints that withstand pressure and environmental factors. With a user-friendly design, they simplify installation, reduce labor time, and enhance the safety and efficiency of gas distribution systems in residential, commercial, and industrial settings.



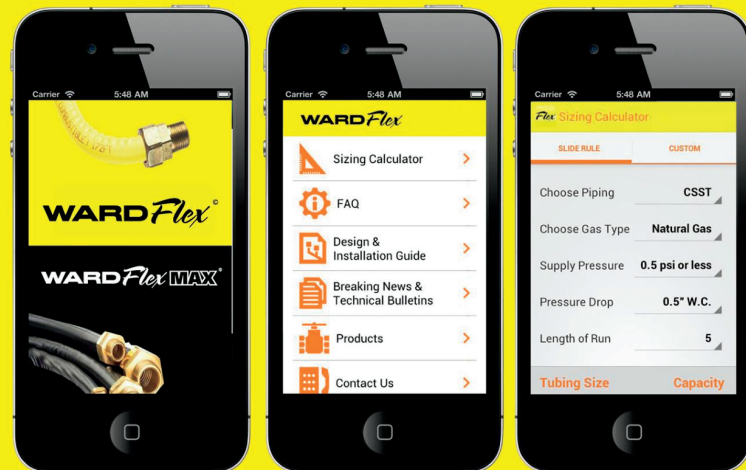
WARD Flex

DOWNLOAD THE



SIZING APP!

The quickest and most convenient jobsite assistant app to get the job done on the go using your own Apple or Android phone.



UNIVERSAL PARTS

REPLACE MORE. CARRY LESS. White-Rodgers universal controls are designed to help you get more jobs done in one truck roll, increasing productivity and profitability. Stock the brand that gives you double the cross references as the leading competitor.

ADVANTAGES:

- Reduce the need for stocking multiple brand-specific components
- Designed for reliability
- Save time and money
- Ability to fix hundreds of different models with a singular part

WHITE-RODGERS
by **COPELAND**



DIRECT OEM REPLACEMENT PARTS INCLUDE:

- Furnace controls and ignition modules
- Gas valves
- Ignitors & flame sensors
- Fan blower controls
- Heating sensors
- **AND MUCH MORE**

RESCUE MOTORS White Rodgers Rescue Motors are high-quality, universal replacement motors designed for HVAC systems. They are known for their reliability, ease of installation, and versatility, capable of replacing a wide range of original equipment manufacturer (OEM) motors.



THERMOSTATS Copeland Thermostats offer versatile, user-friendly control for a wide range of HVAC systems. These thermostats provide precise temperature management, energy efficiency, and compatibility with various heating and cooling systems.

WHITE ROGERS CONNECT APP WR Connect provides easy installation and diagnostic capabilities for HVACR contractors. When used with a compatible Near Field Communication (NFC) enabled WR control, HVAC contractors can update the control's configuration, view the control's status and error codes and access relevant product information all from the touch of a mobile device. Enhanced descriptions of configuration settings and error codes provides the HVAC contractor a more intuitive experience when installing a White-Rodgers control using WR Connect. selection.



KANE PORTABLE TESTING EQUIPMENT Kane has developed the latest in digital logging manometers, combustion analyzers, and flue gas analyzers. Their design, engineering, and manufacturing expertise have created a range of popular portable equipment meeting the highest standards of testing and conformity. It is ideal for use in commercial & and domestic heating.



YELLOW JACKET HVAC VACUUM PUMPS & CHARGING SYSTEMS Yellow Jacket HVAC tools are engineered for performance and reliability, making them an essential tool for HVAC professionals. These systems offer powerful, efficient vacuum capabilities to ensure thorough evacuation of air and moisture from refrigeration and air conditioning systems. Paired with precision charging systems, they provide accurate refrigerant management for optimal system operation.



MALCO SHEET METAL TOOLS We carry a wide range of Malco's line of HVAC sheet metal fabrication tools, including metal snips, shears, cutters, and crimpers.



COMMERCIAL PRODUCTS

COMMERCIAL VENTILATION PRODUCTS

Continental Fan offers a wide variety of commercial ventilation products: wall exhaust fans, spun aluminum roof exhaust fans, utility blowers, pressure blowers, in-line centrifugal fans, energy recovery ventilators, ceiling exhaust fans, hydroponics fans, and destratification fans. From office ventilation to greenhouse ventilation and everything in between, CFM has your commercial ventilation covered.



LOUVRES & DAMPERS Canarm's HVAC Division designs and manufactures a complete line of quality ventilation equipment for industrial, commercial & residential applications. Products include Delhi Blowers, LFI Axial Fans and Canarm Exhaust Fans and Controls.

PACKAGED G/E ROOFTOP UNIT RGECZR/ZT models in 3-5 tons offer up to 16.2 SEER2/17 SEER and 12 EER2/12.5 EER. RGECZT models in 6 tons offer up to 14.6 IEER and 11.2 EER. RGEDZR (7.5, 8.5 & 10 Ton)

Engineered with installability and serviceability in mind, Renaissance makes easier, drop-in replacement possible in most cases without a curb adapter. Once installed, building owners and contractors will enjoy the serviceability advantages Renaissance offers with our ServiceSmart Package that includes a Qwik-Clean Drain Pan, the Qwik-Slide Blower Assembly, and PlusOne® Diagnostics with Dual 7-Segment LED Display.



HVAC SERVICES

Aquifer Group of Companies offers comprehensive HVAC services, including duct design and layout for both commercial and residential projects. Our knowledgeable staff provides expert tech support to keep your systems running smoothly, while our commitment to top-quality products guarantees lasting performance. With custom designs, reliable support, and access to premium HVAC products, we're your trusted partner for all your HVAC needs.



We offer a variety of in house services for your convenience such as:



HVAC System Design



Troubleshooting



**Product and System
Support**

FULL LINE OFFERING



Unit Heaters & Air Handlers



Mapp Gas



Process Control Systems & Climate Technologies



Commercial Grilles & Louvres



Infrared Patio, Garage, Outdoor & Commercial Heaters



Condensate Pumps, Condenser Pads, HVAC install Accessories, Electrical Components, & More



Commercial HVAC Back Draft Dampers/Fire Dampers



Complete Line of Quality Ventilation Equipment for Industrial & Commercial Applications



Gas Risers, Hose & Fittings



Air Conditioning Coils



Commercial Kitchen Ventilation Systems, & Fans, Heaters, & Ductwork



Heat & Energy Recovery Ventilators, Inline Fans & Whole House HEPA Filtration



Whole House Humidifiers



Commercial Fans



Complete High Velocity Heating, Cooling & Indoor Air Quality System



Sheet Metal Products



Furnaces, Air Conditioners, & Heat Pumps



HVAC Metal Registers & Grilles for Residential & Light Commercial Buildings

FULL LINE OFFERING



Specialty Infrared Heating & Air Curtains



HRV Units



Elbows, Boots, Duct, Spiral Pipe, Furnace Solutions, Hoods, Plenum, & More



Tools for Flue Gas Analysis, IAQ Monitoring, Gas Detection, Pressure, Electrical & Temp Measurement



Gas Pipe, Gas Risers, & Fittings



Corrugated Stainless Steel Tubing (CSST) System for Gas Distribution in Residential & Commercial Installs



Sheet Metal Tools



B-Vent and Chimney Liners



GVS-65 PVC Pipe, Fitting, Cement & Primer



Sheet Metal & Venting Products



Electric Furnaces



Universal Parts for Heating, Air Conditioning & Refrigeration Systems



Residential Plastic Registers, Grilles & Whisper Grilles



Commercial Rooftop Units



HVAC Tools, Refrigeration Gauges, Manifolds, HVAC Vacuum Pumps & Refrigerant Recovery Machines



HVAC Specialty Products & Supplies



Thermopan



Novavent Stainless Steel Venting Product

FIREPLACES

CONTINENTAL & NAPOLEON

GAS FIREPLACES

Slim, modern, large, or traditional, there is a Continental Gas Fireplace for every home. Efficient and safe, they provide heat and light even during power outages. They can look like a real wood fire without the work and mess or become a glittering focal point with a unique ember bed.



CONTINENTAL

PREMIUM LINEAR FIREPLACES



CBLP42



CBLP46



CBLP56

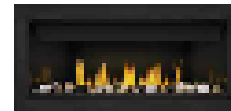
LINEAR GAS FIREPLACES



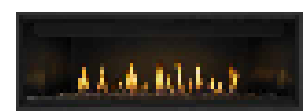
CBL36



CBL42



CBL46



CBL56

FULL VIEW FIREPLACES



CAX36



CAX42



CAX36



CAX42

TRADITIONAL GAS FIREPLACES



CB30



CB36



CB42



CB46



CBX36



CBX42



CBFD4ST



CBFD4P

GAS INSERT



CD13

GAS STOVES



CDVS280



CDVS500



CDVS600



ELECTRIC FIREPLACES

Instantly upgrade any room with a Napoleon Electric Fireplace. Ideal for situations where gas or wood is not an option. Create a cozy environment straight from the box. Hang like art or install one directly into the wall. Modern and cost-effective, an electric fireplace is ideal for any space.



TRAVIS INDUSTRIES is the largest, privately-owned wood, pellet, and gas stove, insert, and fireplace company in America and encompasses four high-quality brands: Lopi, Fireplace Xtrordinair, DaVinci Custom Fireplaces, and Fire Garden.



DaVinci prides itself on its passion for fire. When you experience a DaVinci Custom Fireplace, built exclusively at The House of Fire, you'll discover how every product they create reflects four decades of success delivering inspired design, long-lasting quality, and the world's most engaging flames.



Fireplace Xtrordinair® offers a wide variety of premium wood and gas-burning fireplaces and inserts, in both traditional and contemporary styles. While all of their collections embody the same attention to detail, each one is unique. Sizing and heating capacities range from petite to portrait-style.



Lopi wood, pellet, and gas heating appliances have been North America's favorite choice in fire for over 40 years. Their reputation for solid craftsmanship, reliable performance, low emissions, and unbeatable heating efficiency has been a winning combination year after year, and the favorite fire of families across the nation.



Fire Garden's Linear Fire Pit Burners, Complete Fire Pits, and Fireplaces feature the most incredible presentations of fire you've ever seen! Designed to create the ultimate warmth and outdoor gathering space for any occasion, Fire Garden's mesmerizing flames will bring the magic to 'The Great Outdoors.'





SASKATCHEWAN'S PREMIER SHOWROOM FOR:

**SINKS
BATHROOM FINISHES
VANITIES
SHOWER SYSTEMS
FAUCETS**

**BATHTUBS
TOILETS
SHOWERS
FIREPLACES
AND MUCH MORE!**



FIRST CHOICE FOR HOMEOWNERS & HOMEBUILDERS ALIKE

SHOWROOM LOCATIONS

**3570 FAITHFULL AVE
SASKATOON
306-242-3594**

**4120 5TH AVE. E
PRINCE ALBERT
306-764-6639**

**9802 THATCHER AVE
NORTH BATTLEFORD
306-937-3966**

**915 MCDONALD ST
REGINA
306-352-7381**

VISIT OUR SHOWROOMS OR GIVE US A CALL TO LEARN MORE

HYDRONICS

LOCHINVAR

EPIC SERIES The EPIC residential boiler is the perfect hydronic heating solution for homeowners seeking the reliability, and engineering powers of a Lochinvar high efficiency product. These boilers are easy to install making them the first choice for contractors everywhere.



FEATURES:

- Universal vent connector for easy installation of multiple vent materials
- Direct venting up to 100ft
- ECM pump technology saves electricity and lowers operating costs
- Safely and reliably operates with supply gas pressure as low as 4 inches water column
- Fire-tube heat exchanger allows for a low-pressure drop that saves on pump operation costs and provides installation flexibility, while stainless steel fights off corrosion

KNIGHT FIRE TUBE BOILER The KNIGHT boiler line has continued to benefit from Lochinvar's commitment to innovation with four model generations. Recent upgrades keep KNIGHT at the head of the class, allowing it to continue to lead the charge as the industry-leading high-efficiency residential boiler.



FEATURES:

- Universal vent connectors allow for easy installation of multiple vent materials
- Fire-tube heat exchanger allows for a low-pressure drop that saves on pump operation costs and provides installation flexibility, while stainless steel fights corrosion
- ECM pump technology saves electricity and lowers operating costs
- 10:1 modulation turndown saves money on fuel costs
- Comes with a built-in 110V AC convenience plug. Use this handy standard feature to power your lighting or installation equipment—or for powering the condensate pump
- Loch-N-Link® USB Programming allows for saving of parameters onto a USB drive for use at a different job site
- Installation flexibility with top and bottom water connection for the WHB. Top and left side utility connections for the KHB for easy retrofitting, such as a cast iron efficiency upgrade

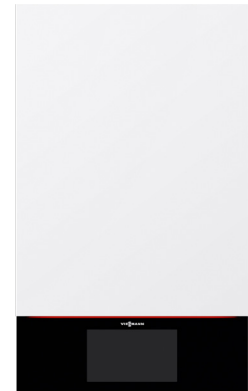
VISSMANN

VITODENS 100-W & 200-W The Vitodens are gas-fired wall-mounted condensing boilers with a modulating Matrix-Plus cylinder burner and Inox-Radial heat exchanger made of stainless steel.

VISSMANN

FEATURES:

- Mobile ViCare app and WiFi connectivity included
- 95% AFUE rating on all models
- Adjustable height control panel
- All pipe connections located at the bottom and serviceable components accessible from the front
- Reliable on-demand domestic hot water with Vitodens 100-W, B1KE combi models
- Low-emission combustion for environmentally-friendly operation. Less than 20 ppm NOx (at 3% O₂)



VISSMANN

VITOCROSSAL 300 CU3A Vitocrossal 300 CU3A is a gas-fired floor-standing boiler with stainless steel Inox-Crossal heat exchanger and Matrix dome gas burner. Rated input: 19 to 199 MBH.



FEATURES:

- Wide water passageways for full flow
- Multi-boiler installation up to 1592 MBH
- Self-calibrating combustion system
- No dedicated boiler pump required
- 95% AFUE rating on all models
- High water volume extends burner run time and reduces short cycling.
- With Inox-Crossal stainless steel heat exchanger and high mass design.

VITOTRON 100 Wall-mounted electric boiler for space heating in low-temperature residential applications. With its all-electric design, Vitotron 100 is an environmentally friendly heating source.

FEATURES:

- Compact design
- Fast and simple installation
- Operating efficiencies up to 99.4% ensure energy savings
- Vitotron 100 comes with an integrated weather-compensated control unit

VISSMANN



VESTA

VRC COMBINATION BOILERS Vesta VRC Combination Boilers are designed to provide both space heating and hot water in one efficient, compact unit. With advanced technology and a high-efficiency rating, these boilers ensure reliable performance while minimizing energy consumption. Ideal for residential and light commercial applications, Vesta VRC boilers offer quick installation, user-friendly controls, and consistent comfort year-round, making them a smart choice for homeowners and contractors alike.

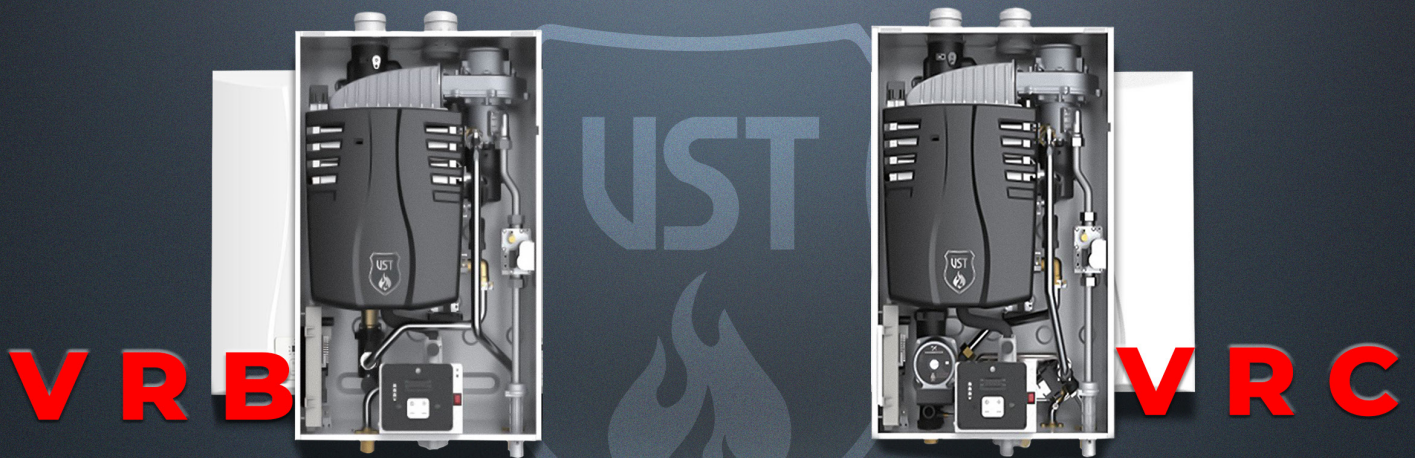
UST
VESTA SMART TECHNOLOGY



VRB BOILERS Vesta VRB Boilers are high-efficiency, wall-hung units designed to deliver dependable heating solutions for residential and light commercial spaces. With their robust construction and advanced engineering, VRB boilers offer exceptional performance, energy savings, and long-lasting durability. These boilers feature easy-to-use controls, quick installation, and compact designs, making them an excellent choice for spaces where efficiency and reliability are a priority.

VESTA.DS.Inc.

DESIGNED FOR SUPERIOR PERFORMANCE



- 15-Year Heat Exchanger Warranty
- Full SSTL Heat Exchangers
- Low NOx combustion system

- 10-Year Heat Exchanger Warranty
- Turn Down Ratio 10:1
- Premium SSTL Heat Exchangers
- AFUE 95%



RENEWABLE ENERGY HEATING & COOLING

AIR TO WATER HYDRONIC HEAT PUMP

VIESSMANN



VITOCAL 100-AW Residential air-to-water heat pump system featuring an outdoor unit, an indoor unit and a steel buffer tank (20 gal). Three sizes available: 1.5, 3.0 and 4.3 tons for cooling / 20.5, 34 and 58 MBH for heating.

VERITUS HEAT PUMP ECM pumps, fans and a scroll compressor work together to enable Veritus to operate with a high coefficient of performance (COP), optimize heat transfer and minimize emissions.

FEATURES:

- High coefficient of performance
- Pairs with Thermal-Stor™ Heat Pump Storage Tank
- Operates in below freezing ambient conditions of 23°F
- Modular design concept
- Low Global Warming Potential (GWP) refrigerant (R513A)
- Package solutions available
- Features SMART TOUCH™ operating control

VIESSMANN



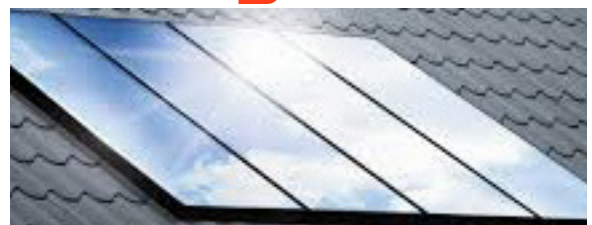
SOLAR HOT WATER & THERMAL HEATING

DID YOU KNOW?

Aquifer offers comprehensive design and supply of solar thermal systems. Ask your sales representative for more information.

VITOSOL SERIES Viessmann solar systems meet every requirement for efficient and cost-effective domestic hot water heating and central heating backup. Help protect the environment and save money by using free solar energy.

VIESSMANN



RENEWABLE ENERGY HEAT & COOL



PROTERRA®

THE RHEEM® PROTERRA® HYBRID ELECTRIC WATER HEATER



AVAILABLE
AT **AQUIFER**

SAVE TODAY. SAVE TOMORROW.

- **Econet Enabled** - Control, monitor and schedule your water heater.
- Built in LeakGuard™ Technology
- Up to 5X the efficiency of a standard water heater
- Easy Installation



SCAN TO
LEARN MORE



RADIANT HEATING & COOLING SYSTEMS

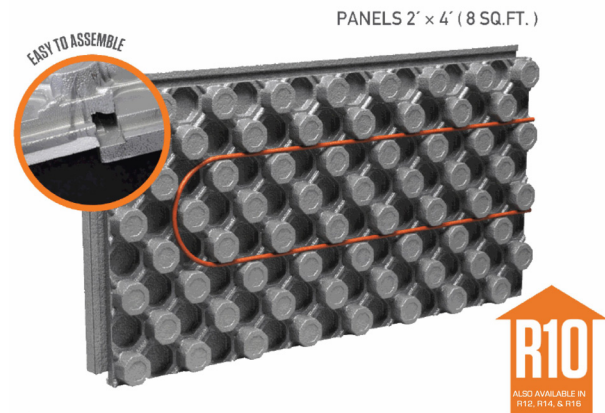
IN-FLOOR & WALL PIPING & PANELS

DID YOU KNOW?

Aquifer offers complete design and supply of radiant floor and wall heating and cooling systems. Ask your sales representative for more information.

INSULATED RADIANT FLOOR PANELS

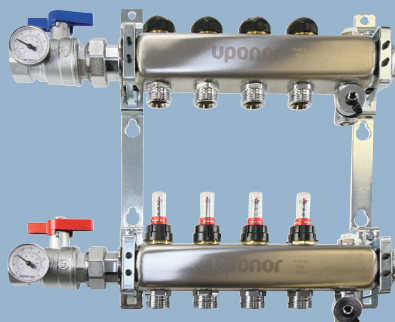
The Ampex panel, made by molding high-performing EPS insulation with a HIPS film, offers a strong, resilient solution that combines rigid insulation, a vapor barrier, and a PEX tubing locking mechanism. Its innovative design ensures the tubing is fully encased in concrete, enhancing heat transfer and reducing system response time.



Maximize Efficiencies with Uponor Radiant Solutions



From pipe to manifolds to controls and more, Uponor is the trusted name in radiant heating systems.



uponor

Moving
> Water

ACCESSORIES & COMPONENTS

INDIRECT WATER HEATERS

VITOCELL SERIES Vitocell models are available to suit a range of needs, including single-coil tanks in both horizontal and vertical designs, and dual-coil vertical tanks for solar heating applications. Fast recovery rates, large water volume, and low standby losses equate to comfort, convenience, efficiency and reliability.

VIESSMANN



SQUIRE INDIRECT WATER HEATER The Squire Stainless Steel Indirect Water Heater uses the power and efficiency of the boiler that heats the home to generate domestic hot water for showers, dishwashing, clothes washing, etc.

FEATURES:

- 17 Models : Capacities from 30 - 119 Gallons
- 316L Stainless Steel Coil and Tank
- Fully Welded Construction
- Dent Resistant Jacket
- Limited Lifetime Warranty

PLATINUM INDIRECT FIRED SS COIL A robust solution engineered for durability and performance in demanding environments. This tank integrates advanced stainless steel coil technology to maximize heat transfer efficiency and longevity. Ideal for residential and commercial applications, it ensures consistent hot water supply while minimizing energy consumption.

FEATURES:

- Tank, coil and fittings are constructed out of Type 316L stainless steel
- Uniform port height between models for domestic cold water and boiler loop
- Insulated with CFC free expanded 2" rigid Polyurethane
- Lead free construction
- Magnesium anode for cathodic & galvanic protection
- Outer jacket is replaceable soft vinyl (PVC) with zipper, available in several colors
- Thermometer, analog sensor and T&P valve included



ACCESSORIES & COMPONENTS

TIGER
TANK

Platinum

**UNMATCHED IN QUALITY.
UNMATCHED IN FEATURES.
UNMATCHED IN PRICE.**



ACCESSORIES & COMPONENTS

FLOW CONTROLS

34C SERIES The Apollo® MVC (34C Series) Mixing Valves are ASSE 1017 approved thermostatic mixing valves designed for high capacity commercial and institutional “point of source” applications. Featuring ease of maintenance and “Best in Class” flow rates, they provide reliable temperature control for large hot water distribution and hydronic heating systems.



 **Bell & Gossett**
a xylem brand



CIRCUIT SETTER PLUS The Bell & Gossett Circuit Setter Plus is a calibrated balance valve designed for pre-set proportional system balance. This system balance method, developed by Bell & Gossett, assures optimum system flow balance at minimum pump operating horsepower.

Circuit Setters are available in a wide range of sizes and styles to meet all your system demands. Brass valves, in sizes ½” through 3”, utilize a full port ball valve with calibrated nameplate and feature a memory stop and two integrated pressure/temperature ports for easy ΔP measurement.

ERIE VT MOTORIZED ZONE VALVE The VT valve's high flow capacity paddle design provides a low pressure drop fluid control. The AG/AH actuator's unique ‘pop-top’ connection allows for a quick and simple installation. The AG (General Close Off) and AH (High Close Off) are spring return actuators designed for two position control. Both spring return open and spring return closed functions are available. All Normally Closed actuators feature a manual override lever.

Schneider Electric's industry leading Erie Zone valve and actuators are suitable for the control of hot and chilled water in terminal unit applications.


Water Treatment Controls



ACCESSORIES & COMPONENTS

CIRCULATORS

STRATOS MAXO With optimised and innovative energy-saving features, the Wilo-Stratos MAXO sets new standards for commercial HVAC and drinking water applications in terms of energy efficiency. Its outstanding user-friendliness makes operating the pump easier than ever before.

wilo



wilo



STAR-E EC Motor-Driven, High-Efficiency, Wet-Rotor Circulator. Used in heating, cooling and industrial circulation.

FEATURES:

- High-efficiency, EC Motor-driven technology
- Differential temperature control
- Automatically adjust to the systems demand
- Three HD modes –proportional control
- Four speed control
- LED display and adjustment buttons for easy set-up and changes

ECOCIRC The ecocirc® is a highly efficient variable-speed, electronically commutated permanent magnet motor (ECM) Smart Circulator Pump designed for both hydronic heating and cooling systems, as well as potable water systems.

FEATURES:

- Best-in-Class Efficiency
- Simplicity
- Adaptability
- Connectivity (ecocirc+)
- Pump Protection (CircGuard™)



Bell & Gossett

a xylem brand



Bell & Gossett

a xylem brand

CHECKTROL Check-Trol is the solution for circulator installations. Installing a Check-Trol on the discharge of the circulator gives you the features of a Flow Control Valve, Isolation Valve and Companion Flange. Another advantage of the Check-Trol is the minimal pressure drop, especially when compared to the losses that can be experienced when a check valve is installed internal to the circulator.

ACCESSORIES & COMPONENTS



Bell & Gossett
a xylem brand

ecocirc®
FAMILY
BEST PERFORMING
ENERGY EFFICIENT
ECM
CIRCULATORS



ACCESSORIES & COMPONENTS

THERMOSTAT

INVITA WIFI THERMOSTAT The Tekmar Invita Thermostat uses just two wires from any living space, Invita easily connects to the included HVAC Interface Module (HIM). Invita is compatible with most home HVAC systems, including heat pumps, conventional and hybrid/dual fuel systems. So no pulling wires, no patching & repainting walls & no replacing batteries.

tekmar®
A WATTS Brand



AIR & DIRT SEPERATORS & LLH

HYDRAULIC SEPERATOR 4-IN-1 In addition to isolating the primary circuit from the secondary circuit, the new 4-in-1 hydraulic separators from Calefactio separates water, air, dirt and ferrous debris. The coalescence process produced by the media allows air and micro-bubbles to fuse and then be evacuated through the automatic air vent.

FEATURES:

- Prevents variations in flow rates and temperature
- Separates dirt
- Separates air
- Captures ferrous and non-ferrous debris
- Improves system efficiency
- Better energy performance
- Increases component life
- Reduces installation and operation costs
- Easy to install and maintain

 **CALEFACTIO**



INTAKLEAN Zilmet IntaKlean is the best solution in solving plant problems due to the presence of particles caused by the corrosion and scale during normal system operation. It is a multifunction magnetic dirt separator filter for hydraulic circuits.

FEATURES:

- It can be mounted on vertical, horizontal and diagonal piping
- All impurities are removed helping to increase the working life of the boiler
- Maintains optimum system efficiency by fighting corrosion
- Easy to clean
- Easy 32 ounce dosing of the treatment fluids.



ACCESSORIES & COMPONENTS

ZILMET

BRAZED PLATE HEAT EXCHANGER Ideal for hydronic and refrigeration use, custom sizes and configurations available upon request.



Suitable to a wide variety of applications including:

- Boiler components
- Hot water production
- Traditional boiler heating
- Pool heating
- Thermal circuits decoupling
- District heating
- Solar system
- Snow melt

EXPANSION TANKS Zilmet has been manufacturing high quality diaphragm well tanks for over 50 years. Zilmet has created a compact design with a seamless diaphragm that never stretches or creases. There are no bubbles or corners to trap sediment, inhibiting bacterial growth.

FEATURES:

- Each tank is factory leak tested
- All diaphragms designed to maximize drawdown
- External baked on epoxy-polyester coating provides a durable, appliance like finish
- 5 year limited manufacturer warranty



Always Moving Forward™



AXIOM



PRESSURE PAL DIGITAL MINI SYSTEM FEEDER

The DMF150 utilizes a digital pressure control (0-45 psig) with electronic alert contacts. The tank design incorporates a wall bracket connection that comes standard in the box. Front fill point makes fluid handling a simple process.



NeutraPal.



NEUTRAPAL CONDENSATE NEUTRALIZER

The 'NeutraPal' is ideal for neutralizing condensate from condensing boilers and furnaces operating on natural gas or propane.

The condensate is acidic and has the potential to harm the environment and the sewer system. The NeutraPal will raise the pH of the condensate to a more neutral level before it is discharged to drain.

PUROPAL DISPOSABLE H2O DEMINERALIZERS

The 'PuroPal-1' disposable cartridges are ideal for demineralizing fill water for closed loop hydronic systems. The quality of water, especially when mixed with anti-freeze (glycol), can have an impact on system performance. Marginal water quality can lead to scaling, sediment deposits, accumulation of sludge, and increased corrosion rates.



CLEAN 5 SYSTEM CLEANER Suitable for all kinds of hydronic heating and cooling systems: traditional hydronic heating systems, chilled water systems, and geothermal systems.

3 sizes available

VENTING PACKAGES

FULL VENTING DESIGN & SUPPLY Aquifers trained expert team is here to help design and supply all your venting requirements. Not only do we stock top quality product but we have experts who can design full venting systems for residential and commercial applications.



ACCESSORIES & COMPONENTS

PIPING SYSTEMS

APOLLO PROPRESS Apollo Press® product line offers a heat-free method for joining copper tubes, providing a clean and easy technique that saves time and money. Featuring pre-lubricated seals and Leak Before Press® technology, Apollo Press® ensures quick and confident connections. Available in both standard and lead-free configurations.

Apollo Press® offers fittings and valves in sizes ranging from ½" through 4" and comes equipped with an EPDM sealing element featuring Leak Before Press® functionality, ensuring safe and confident connections and minimizing potential installation errors.

"Apollo" Press



AQUATECHNIK FUSIO The Fusio-Technik line of pipes includes the new faser FIBER-T and faser FIBER-COND pipes with special reinforced fibers in the middle layer.

The faser FIBER-T is ideal for heating, air conditioning, domestic hot water, warm water transport, irrigation and compressed air systems. The faser FIBER-COND is designed for heating, chilled water and other mechanical systems.

Like all Fusio-Technik pipes, faser FIBER-T and faser FIBER-COND can be polyfused with Fusio-Technik fittings.

All aquatechnik fittings with brass are lead-free.

SHURJOINT PLAIN-END Shurjoint plain-end couplings are non-grooved mechanical pipe joining components and excellent alternatives where pipe is difficult to groove or when grooving is not the preferred method. The processing of a roll groove on pipe becomes more difficult as the pipe O.D. and or wall thickness increases. Roll grooving pipe larger than 14" (350 mm) requires proper tools and equipment. Pipe having a wall thickness greater than 0.375" (9.5 mm) may not be practical to roll groove.



ACCESSORIES & COMPONENTS

GLYCOL

CHEM-FROST 35% A high quality, non-toxic, heavy duty heat transfer fluid. 35% propylene glycol with premier inhibitors to help prevent corrosion, blended using deionized water.



TESTING TOOLS

KANE258 FLUE GAS ANALYZER This kit comes with direct CO, O₂ & CO sensor protection. kit configuration includes the IRP-3 printer.

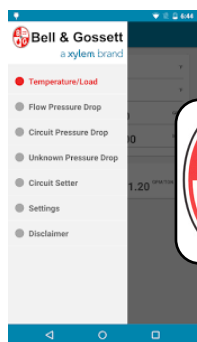
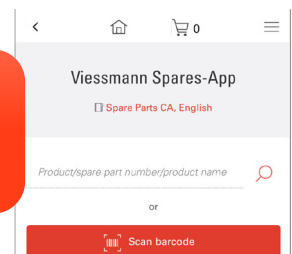
FEATURES:

- Entry level FGA for domestic gas applications
- Easy-to-use rotary dial
- Purge pump protection prevents accidental damage to CO sensor
- Hydrogen (H₂) ready – up to 20% blend



APPS

VISSMANN SPARE PARTS The Spare Parts app is an easy, quick and efficient way for contractors, technicians and engineers to find spare parts for Viessmann products. With just a serial number, Viessmann part information is now at your fingertips!



BELL & GOSSETT SYSTEM SYZER System Syzer is an HVAC tool that helps with piping system design. The application is based on the original plastic wheel calculator designed by Gil Carlson of Bell & Gossett.

COMMERCIAL PROJECTS Aquifer Group of Companies has a full Hydronics department available for your commercial project designs and quotations. We have the capabilities to design, supply all the products necessary to complete your commercial project. Everything from boiler venting and everything in between.

COMMERCIAL PRODUCTS

VISSMAN

VITOCROSSAL Vitocrossal 200 CI2 is a floor standing gas condensing boiler with modulating MatriX cylinder burner and stainless steel Inox-Crossal heat exchanger.

VISSMAN



FEATURES:

- Industry leading thermal efficiency up to 98% for lower energy costs
- Self-calibrating active O2 trim technology automatically adjusts to gas type and multiple vent options / lengths
- No primary boiler pump required
- Viessmann One Base control platform enables control via ViGuide app and digital services.

ZILMET COMMERCIAL

ZILMET Zilmet commercial hydronics products are renowned for their reliability and efficiency in managing water pressure and thermal expansion in HVAC systems. Whether you're dealing with pressure tanks, expansion vessels, or heat exchangers, Zilmet provides the quality and durability needed to maintain system integrity and reduce maintenance costs over time.



WILO BOOSTER PACKAGE

HELIX V A vertical multistage centrifugal pump designed for various applications, including water supply, pressure boosting, industrial circulation, cooling, air-conditioning, irrigation, and fire protection systems. It's part of the Wilo range of products, known for energy-efficient, reliable pumping solutions.


wilo



FEATURES:

- Real-time diagnostics and remote monitoring
- Full system kWh energy reporting
- Easy to use 7" touchscreen interface
- Variable speed control per pump
- Adjustable low pressure cut-out
- Balanced run time for all pumps
- Balanced run time for all pumps

Great People. Efficient Solutions. Meaningful Value.

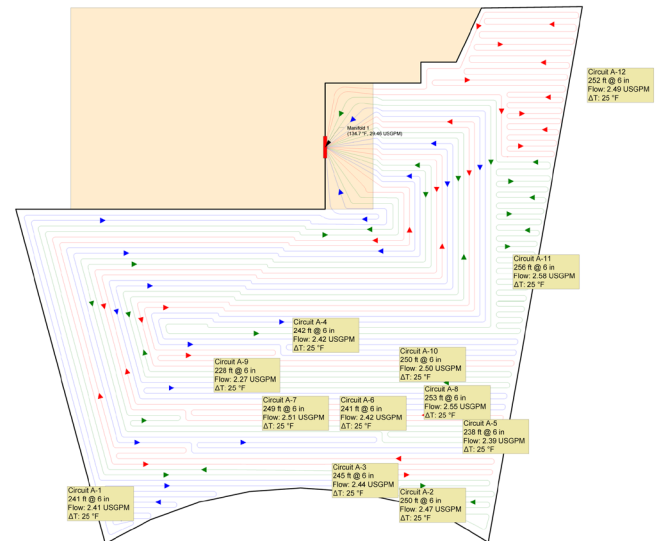
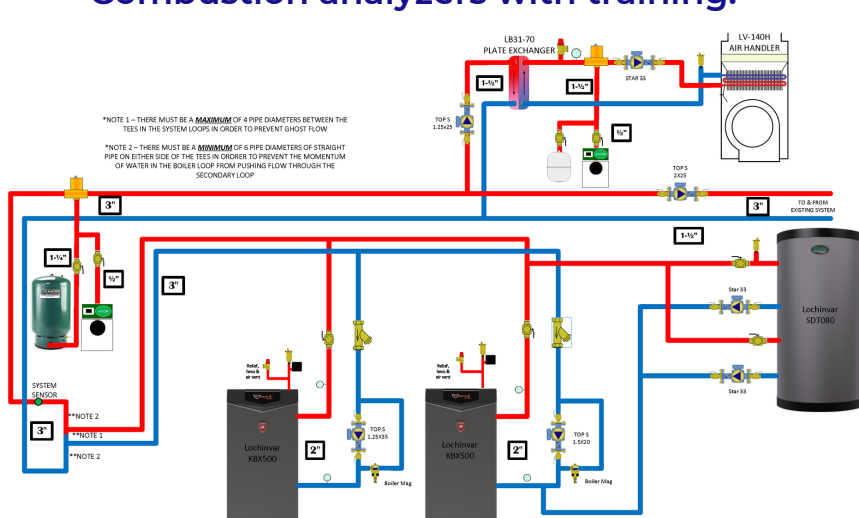
 **Lochinvar**® offers innovative commercial and residential space and water heating solutions that engineers, specifiers, builders and contractors can depend on. Turn to AQUATECH for heating and hot water value and support.



NEED HELP WITH YOUR NEXT DESIGN?

Aquifer Distribution has a team of Hydronics experts ready to help you on your next project.

- Complete hydronic system design and supply.
- Radiant floor/walls heating and cooling.
- Integrated boiler room equipment sizing, selection, and cost optimization.
- Renewable energy systems – solar thermal, geothermal, CHP.
- Hydronic diagrams, control wiring diagrams, and In-Floor loop layouts.
- Combustion analyzers with training.



Send all your design requests and inquiries to hydronics@aquiferdist.com

OTHER SERVICES INCLUDE



**After-Sales
Service & Parts**



**Systems Startup
Support**



Hydronic Training



**On-Site and Online
Technical Support**

FULL LINE OFFERING



Plate Exchangers, Super Hot Boilers,
& Electric Boilers



Solenoid Valves



Centrotherm
solutions beyond

InnoFlue Polypropylene Vent
Systems, accessories & BlitzFlex Air-
Intake System



Airhandlers, Hydronic Coils, & K-Flex
Insulation



Hydronic Specialty Products,
Glycol Feed Systems, Condensate
Neutralizers and Chemicals



Glycol & Chemical Products



Ampex Insulated Radiant Floor
Heating Pannels



Bell & Gossett
a xylem brand

Heat Circulators & Exchangers, Air
Separators, Flow Control Valves,
Pressure Relief Valves & Accessories



Actuating Zone Valves



Heat Free Method for Joining
Pipe



Hydronic Specialties & Accesories



Complete High Velocity Heating,
Cooling & Indoor Air Quality System



Wide Range of Valves for Different
Applications



Hydronic Specialties & Accesories



Flue Gas Analysis, IAQ Monitoring,
Combustible Gas Detection,
Electrical & Temp Measurement



Fusion Fittings & Pipe



Heating Valves, Fittings & Pipe



Tiger Tank Indirect Water Heaters

FULL LINE OFFERING



Energy Efficient Boilers, Water Heaters & Commercial Package Systems



Hydronic Heating Panels & Low Loss Headers



Boilers & Condensing Tankless Water Heaters



Slant Fin Baseboard Heating Products



A WATTS Brand
Heating & Cooling System Control, Zoning, Domestic Hot Water Generation & More



Commercial and Residential Boilers, Heat Pumps, Solar Systems & Heating Accessories



Hybrid Water Heaters



Hydronic Glycol & Acid Magic



Complete Range of Pumps & Accessories



Grooved Mechanical Piping Components



Aquapex Pipe & Fittings, Radiant Heating & Cooling Systems, Ecoflex - Pre Insulated Pipe Systems



Z-Vent Gas Venting



Hydronic Pumps & Accessories



Expansion Tanks & Hydronic Accessories



CLARK'S SUPPLY & SERVICE INC.
AN AQUIFER COMPANY

RENTALS FOR THE JOB SITE

Rent reliable, top-quality equipment for your next project. Stay on schedule with Clark's Rental Services.

EMERALD PARK
306-359-1964

MOOSE JAW
306-693-4334

WARMAN
306-934-3880





**FOR ALL YOUR HVAC & HYDRONICS NEEDS
CALL OR VISIT US AT ONE OF OUR
LOCATIONS ACROSS SASKATCHEWAN**

SASKATOON

3570 Faithfull Ave
Saskatoon, SK S7P 0E4
306-242-1567

REGINA

915 McDonald St
Regina, SK S4N 2X5
306-352-7381

PRINCE ALBERT

4120 5th Ave East
Prince Albert, SK S6V 5P9
306-764-6639

NORTH BATTLEFORD

9802 Thatcher Ave
North Battleford SK, S9A EM1
306-937-7741

WWW.AQUIFERDIST.COM