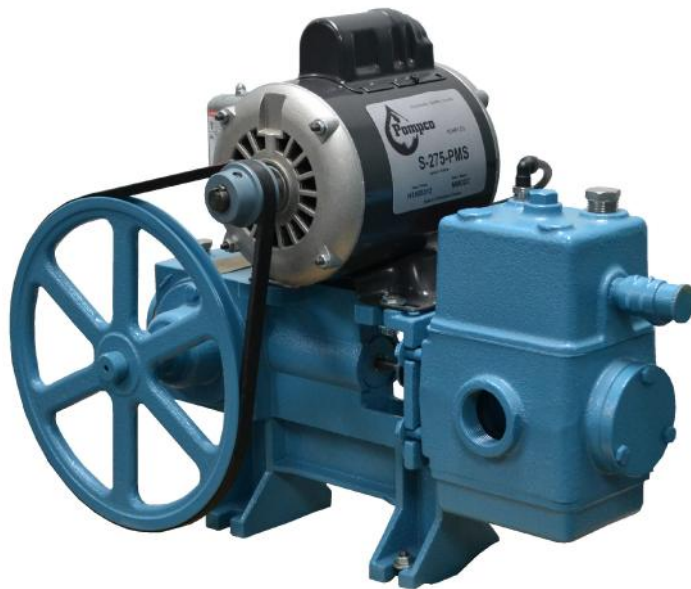
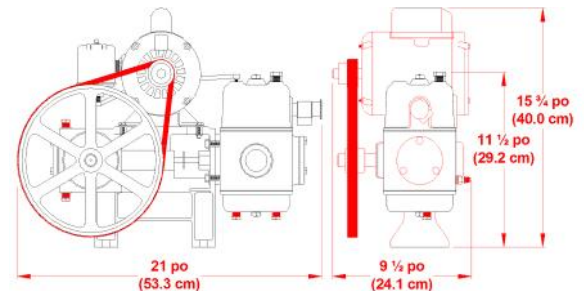


# Cast iron piston pump



For shallow wells and well points: these pumps are mostly used on farms, residences, cottages, solar applications and sprinkling systems.



Part number	Model	H.P.	Capacity	Suction inch (mm)	Discharge inch (mm)	Shipping weight lbs (kg)
521-0005	S-275 with motor	1/3	275 gal/h (1040 l/h)	1 1/4" (31.8)	1" (25.4)	70 (32)
521-0010	S-275 pump only		275 gal/h (1040 l/h)	1 1/4" (31.8)	1" (25.4)	54 (25)
521-0025	S-600 with motor	1/2	600 gal/h (2271 l/h)	1 1/4" (31.8)	1" (25.4)	78 (35)
521-0030	S-600 pump only		600 gal/h (2271 l/h)	1 1/4" (31.8)	1" (25.4)	54 (25)

## FEATURES

- On site maintenance possible due to an easy access to internal parts
- Built tough for a longer life span
- Constant pumping, even with the presence of air in water
- Double-action piston, single cylinder
- Continuous efficiency at various pressures.
- Increased resistance to particles in water.
- Priming up to 25 feet (7.62 m)
- Safety valve 100 PSI
- Available in 2 models (S-275, S-600) and 2 versions:  
**Complete Pump:** pump, motor and pressure switch set at 30/50 lbs/in<sup>2</sup>  
**Pump only:** no motor and pressure switch

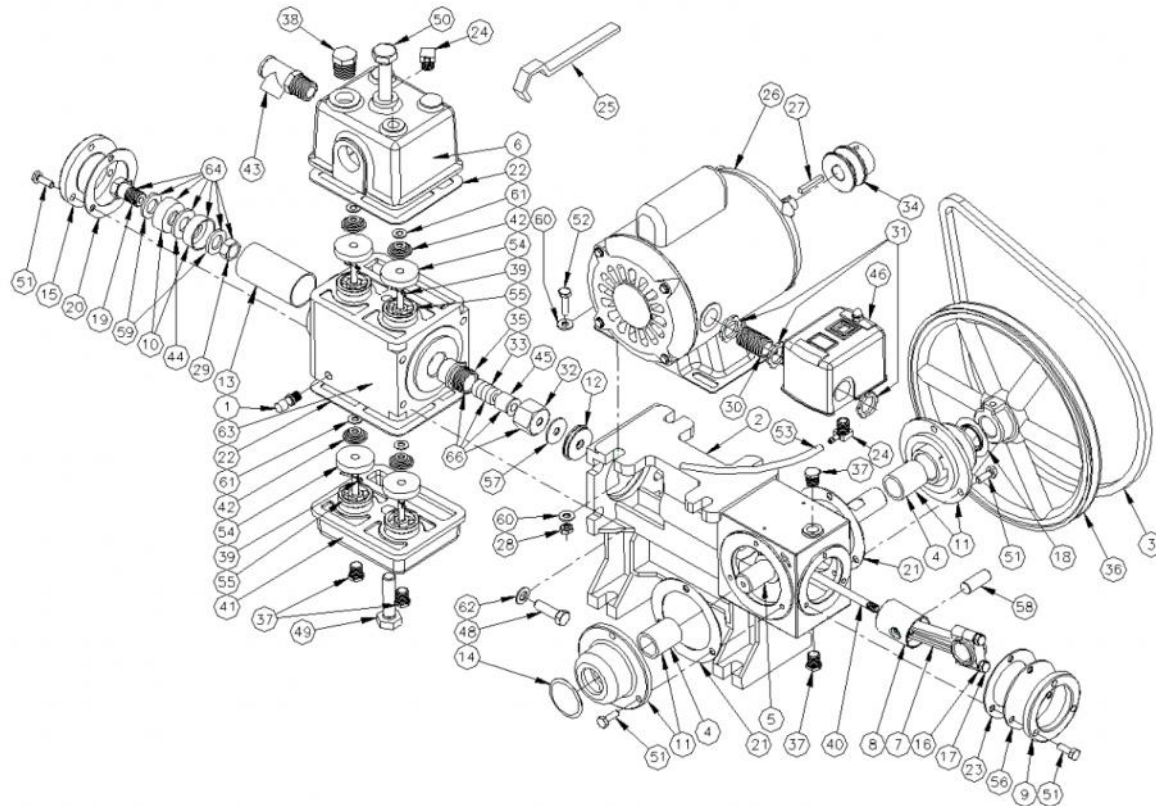
## CHARACTERISTICS

- 1/3 HP (115V) or 1/2 HP (110 & 230V) motor, capacitor starter, automatic thermal protection
- Main components: grey cast iron, bronze and stainless steel.

**Each pump is tested at our factory.**



# Replacement parts Cast iron piston pump



ITEM	Part number	DESCRIPTION
1	023-0060	SN-18L SNIFFER VALVE - NO LEAD
2	522-0300	PUMP BODY
3	522-0301	V-BELT (4L-360)
4	522-0302	CRANKSHAFT BUSHING
5	522-0800	CRANKSHAFT
6	522-0801	AIR CHAMBER
7	522-0803	BRASS CONNECTING ROD ASSEMBLY
8	522-0804	PISTON HEAD
9	522-0805	CRANKCASE COVER
10	522-0806	(1 3/8") S-275 LEATHER CUP S/S
10	522-0807	(1 3/4") S-450 LEATHER CUP
10	522-0808	(1 7/8") S-600 LEATHER CUP S/S
11	522-0809	CRANKSHAFT BEARING ASSEMBLY (ITEM 4-11)
12	522-0812	PISTON ROD GUIDE
13	522-0815	S-275 YELLOW BRASS CYLINDER
13	522-0816	S-450 YELLOW BRASS CYLINDER
13	522-0817	S-600 YELLOW BRASS CYLINDER
14	522-0818	CRANKSHAFT BEARING PLUG (CLOSE)
15	522-0819	WATER BOX HEAD COVER
16	522-0826	1/4" LOCK WASHER (BLACK)
17	522-0827	1/4-20 x 1 1/4" HEXAGONAL BOLT (BLACK)
18	522-0828	CRANKSHAFT BEARING PLUG (OPEN)
19	522-2001	PISTON ADJUSTING BOLT S/S
20	522-2200	WATER BOX HEAD COVER GASKET
21	522-2202	CRANKSHAFT BEARING GASKET
22	522-2203	WATER BOX GASKET
23	522-2205	PUMP BODY GASKET
24	023-0572	469-4B ELBOW
25	522-2800	PACKING BOX NUT KEY
26	522-3000	1/3 HP MOTOR WITH CAPACITOR (S-275, S-450)
26	522-3001	1/2 HP MOTOR WITH CAPACITOR (S-600)
28	522-3101	1/4 x 20 HEXAGONAL NUT (PLATED)
29	522-3102	BRASS PISTON JAM NUT S/S
30	024-0759	NIPPLE 1/2 x CLOSE (BLACK)
31	522-3105	ELECTRIC LOCK NUT 1/2" NPT
32	522-3501	BRASS PACKING BOX NUT S/S
33	522-3502	PACKING KIT (4)
34	522-3504	MOTOR PULLEY 1 3/4" O.D. - S-275, S-450
34	522-3505	MOTOR PULLEY 2" O.D. - S-600

ITEM	Part number	DESCRIPTION
35	522-3506	PACKING BOX S/S
36	522-3509	10" PUMP PULLEY - 7/8" BORE
37	522-3510	1/4" NPT S/S PLUG
38	522-3511	1/2" NPT S/S PLUG
39	522-3512	S/SCUTTER PIN
40	522-4000	PISTON ROD S/S
41	522-4200	SUCTION CHAMBER (ITEM 41-55)
42	522-4201	SPRING VALVE S/S
43	044-7130	RV-50 / 100 PSI RELIEF VALVE - NO LEAD
44	522-4206	S-275 PISTON SPACER S/S
44	522-4207	S-450 PISTON SPACER S/S
44	522-4208	S-600 PISTON SPACER S/S
45	522-4210	PACKING BOX SLEEVE S/S
46	661-0150	FSG-2P / 30-50 PRESSURE SWITCH
48	522-4215	3/8-16 x 1 1/4" HEXAGONAL BOLT (PLATED)
49	522-4216	1/2 x 2" HEXAGONAL BOLT (PLATED)
50	522-4217	1/2 x 4" HEXAGONAL BOLT (PLATED)
51	522-4218	1/4-20 x 3/4" HEXAGONAL BOLT (PLATED)
52	522-4219	1/4-20 x 1" HEXAGONAL BOLT (PLATED)
53	242-0500	MV-4040 POLYETHYLENE TUBING
54	522-5100	NEOPRENE VALVE DISC
55	522-5101	SEAT VALVE SUCTION CHAMBER S/S
55	522-5102	SEAT VALVE AIR CHAMBER S/S
56	522-5105	WINDOW
57	522-5303	ROD WIPER
58	522-5305	HEAD PISTON PIN
59	522-5306	S-275 PISTON WASHER S/S
59	522-5307	S-450 PISTON WASHER S/S
59	522-5308	S-600 PISTON WASHER S/S
60	522-5311	1/4" WASHER (PLATED)
61	522-5312	1/4" WASHER (BRASS)
62	522-5313	5/16" WASHER (PLATED)
63	522-5800	S-275 WATER BOX ASSEMBLY (ITEM 13-55-35-63)
63	522-5801	S-450 WATER BOX ASSEMBLY (ITEM 13-55-35-63)
63	522-5802	S-600 WATER BOX ASSEMBLY (ITEM 13-55-35-63)
64	522-5500	S-275 PISTON CUP ASS'Y (ITEM 19-59-44-10-29)
64	522-5501	S-450 PISTON CUP ASS'Y (ITEM 19-59-44-10-29)
64	522-5502	S-600 PISTON CUP ASS'Y (ITEM 19-59-44-10-29)
66	522-3515	PACKING BOX ASSEMBLY (ITEM 35-33-45-32)