

# CONDENSAFE™

QUALITY

INNOVATION

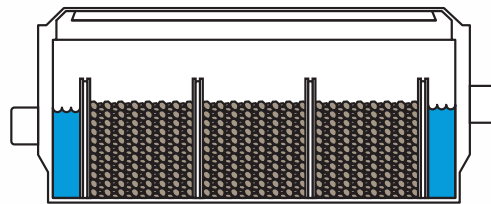
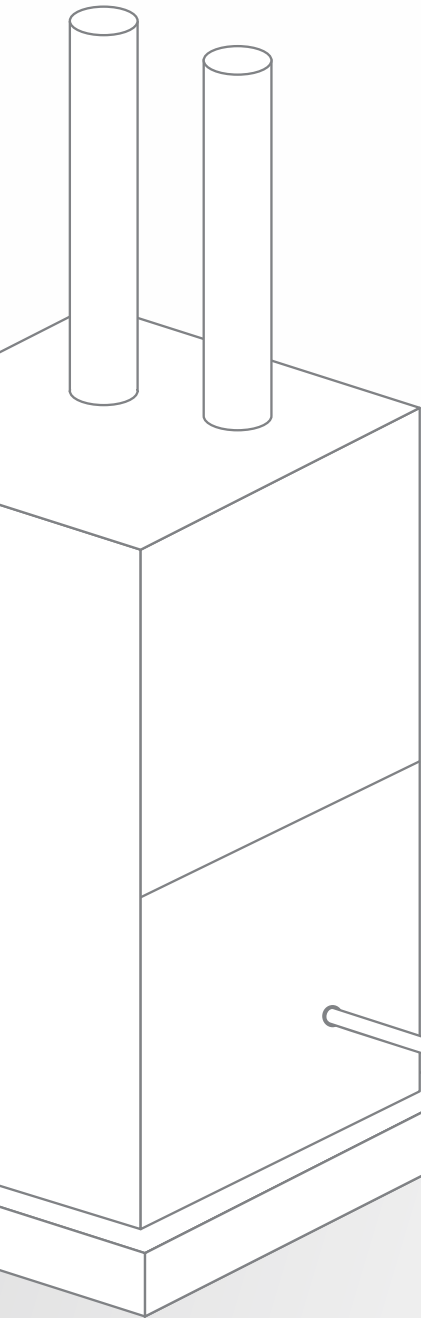
RELIABILITY

## CONDENSATE NEUTRALIZER

CONDENS SAFE IS AN OUTSTANDING INNOVATION IN THE CONDENSATE NEUTRALIZER DOMAIN.

The unit is divided in three sections and the engineered media is contained in bags that you can replace easily when needed. These media bags are the only ones in the industry to have date labels so the user knows exactly when it's time to replace them.

Use only the sections you need! As the unit is divided in three sections, you can place one, two, or three bags in the unit, depending on the volume of condensate that needs to be treated.

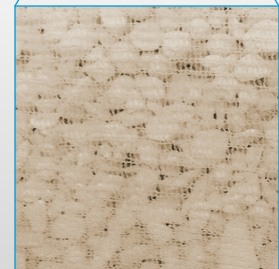


Model #CS6 (6.3 GPH / 24 LPH) shown



### FEATURES

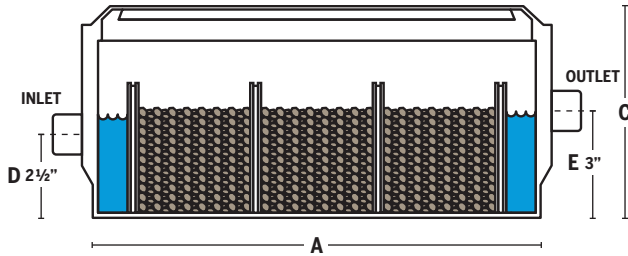
- 1 No by-pass necessary
- 2 No messy media replacement
- 3 No disconnection needed to replace media
- 4 The only condensate neutralizer that can be hard piped
- 5 Dated media in a bag



Engineered media in bags

**TECHNICAL DATA**

Model: #CS6



TECHNICAL DATA											
LENGTH (A)		WIDTH (B)		HEIGHT (C)		INLET (D)		OUTLET (E)		INLET/OUTLET	
in	cm	in	cm	in	cm	in	cm	in	cm		
12	30.5	4 3/4	12	5 1/2	14	2 1/2	6	3	7.6	1/2" FNPT	
SIZING											
1 SECTION				2 SECTIONS				3 SECTIONS			
MBH	kWh	gal/h	L/h	MBH	kWh	gal/h	L/h	MBH	kWh	gal/h	L/h
525	151	2.1	8	1050	308	4.2	16	1575	461	6.3	24
UNIT MAX CONDENSATE FLOWRATE*											
6.3 GPH (24 LPH)											

\*Verify condensate flowrate on your appliance. In general, 500,000 BTU/hr at 92% efficiency should generate around 1.6 Gal/hr.

**ECONOMICAL**

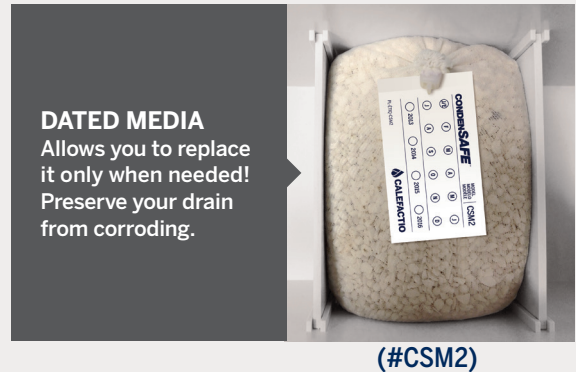
- Replaceable engineered media bag (#CSM2)
- The three sections configuration allows a wide range of flowrates so you can use only the sections you need
- Long-life heavy duty tank and cover

**ENVIRONMENT FRIENDLY**

Dispose an environment friendly neutralized condensate.

**CLEAN**

- No more dirty media replacement: engineered media is contained in an easy replaceable bag
- Brackets are available to fix the unit to the wall



**DATED MEDIA**  
Allows you to replace it only when needed!  
Preserve your drain from corroding.

(#CSM2)

**INCLUDED**

- One media bag (#CSM2)
- Two barbed fittings 1/2" x 3/4"
- Two glued fittings 1/2" x 3/4"
- Wall brackets



(#CSB)

**1 YEAR LIMITED WARRANTY FROM THE DATE OF PURCHASE.**

**Calefactio Solutions Inc.**  
Quebec (Canada)

T 450 951.0818  
F 450 951.2165

**calefactio.com**  
info@calefactio.com

