

CHECK & FOOT VALVES

One-way valves
preventing backflow
for both residential and
industrial applications



BOSHART
INDUSTRIES

INDEX

Product Line	Page
Brass Swing Check Valves	1
Brass Check Valves	1
Control Centre Check Valves	2
Bronze Check Valves	3
Cast Iron Check Valves	3
Ductile Iron Check Valves	4
Plastic Check Valves	5
Stainless Steel Check Valves	6
Auto-drain Valve	6
Replacement Break-off Plug	7
Ball Check Valves	7
Y-Strainer	7
Brass Foot Valves	8
Bronze Foot Valves	8
Cast Iron Foot Valves	9
Plastic Foot Valves	9
Stainless Steel Foot Valves	10
Flapper Foot Valves	10

BRASS SWING CHECK VALVES

Swing check valves ensure that fluid flows in one direction only. They use a disk in the valve that closes when the pressure of the flow decreases ensuring there is no backflow.



Part No.	Size	Connection Type	Quantity List		
			L1	L2	Price - A

List Price Effective: May 14, 2021



Boshart, Temperature Range: Up to 180°F (82°C), Maximum Pressure: 200 PSI

• NSF / ANSI 372 Certified

08060311NL	1/2"	FPT	10	120	\$ 14.91
08060411NL	3/4"	FPT	10	80	\$ 19.68
08060511NL	1"	FPT	5	60	\$ 26.06
08060611NL	1-1/4"	FPT	5	40	\$ 43.97
08060711NL	1-1/2"	FPT	5	30	\$ 56.84
08060811NL	2"	FPT	2	24	\$ 93.75
08060911NL	2-1/2"	FPT	15		\$ 161.02
08061011NL	3"	FPT	6		\$ 228.84
08061111NL	4"	FPT	4		\$ 348.28



Boshart, Temperature Range: Up to 180°F (82°C), Maximum Pressure: 200 PSI

• NSF / ANSI 372 Certified

08060312NL	1/2"	CxC	10	120	\$ 14.91
08060412NL	3/4"	CxC	10	80	\$ 19.68
08060512NL	1"	CxC	5	60	\$ 26.06
08060612NL	1-1/4"	CxC	5	40	\$ 43.97
08060712NL	1-1/2"	CxC	5	30	\$ 56.84
08060812NL	2"	CxC	2	24	\$ 93.75
08060912NL	2-1/2"	CxC	15		\$ 161.02
08061012NL	3"	CxC	6		\$ 228.84

BRASS CHECK VALVES

Brass check valves ensure that fluid flows in one direction only.



Part No.	Size	Connection Type	Quantity List		
			L1	L2	Price - A

List Price Effective: March 29, 2021



Boshart, Standard, Poppet Material: Cast Brass, Seal Material: Nitrile Rubber,

Temperature Range: Up to 180°F (82°C), Maximum Pressure: 200 PSI

• NSF / ANSI 372 Certified

17YBCV050NL	1/2"	FPT	10	100	\$ 13.59
17YBCV075NL	3/4"	FPT	10	80	\$ 18.33
17YBCV100NL	1"	FPT	10	60	\$ 25.37
17YBCV125NL	1-1/4"	FPT	5	40	\$ 34.79
17YBCV150NL	1-1/2"	FPT	5	30	\$ 48.68
17YBCV200NL	2"	FPT	5	20	\$ 79.44
17YBCV300NL	3"	FPT	6		\$ 342.58
17YBCV400NL	4"	FPT	3		\$ 687.92



Flomatic Valves, Union, Poppet Material: Acetal, Seal Material: Nitrile Rubber,

Spring Material: Stainless Steel, Temperature Range: Up to 180°F (82°C), Maximum Pressure: 150 PSI

• NSF / ANSI 372 Certified

Dual check valves are designed for installation on potable water lines to protect against both backsiphonage and backpressure of polluted water into the potable water supply.

17-GF8089E	1/2"	FPT			\$ 128.37
17-GF8080E	3/4"	FPT		25	\$ 140.04
17-GF8081E	1"	FPT			\$ 165.05

Contact your sales rep for any further information

Toll Free: 1-800-561-3164
boshart.com

CONTROL CENTRE CHECK VALVES

Control centre check valves have tapings for accessories such as gauges, switches and snifter valves.
Note: accessories shown are not included.



Part No.	Size	Connection Type	Inlet Tapping	Outlet Tapping	Quantity List		
					L1	L2	Price - A

List Price Effective: March 29, 2021



Boshart, Standard, Poppet Material: Cast Brass, Seal Material: Nitrile Rubber, Temperature Range: Up to 180°F (82°C), Maximum Pressure: 200 PSI
• NSF / ANSI 372 Certified

17YBCVA-100NL	1"	FPT	(1) 1/8" FPT	None	10	60	\$ 24.49
17YBCVA-125NL	1-1/4"	FPT	(1) 1/8" FPT	None	5	40	\$ 39.34



Boshart, Standard, Poppet Material: Cast Brass, Seal Material: Nitrile Rubber, Temperature Range: Up to 180°F (82°C), Maximum Pressure: 200 PSI
• NSF / ANSI 372 Certified

17YBCVB-100NL	1"	FPT	(1) 1/8" FPT	(1) 1/4" FPT	10	60	\$ 23.28
17YBCVB-125NL	1-1/4"	FPT	(1) 1/8" FPT	(1) 1/4" FPT	5	40	\$ 37.02
17YBCVB-150NL	1-1/2"	FPT	(1) 1/8" FPT	(1) 1/4" FPT	5	30	\$ 38.62
17YBCVB-200NL	2"	FPT	(1) 1/8" FPT	(1) 1/4" FPT	5	20	\$ 83.93



Boshart, Standard, Poppet Material: Cast Brass, Seal Material: Nitrile Rubber, Temperature Range: Up to 180°F (82°C), Maximum Pressure: 200 PSI
• NSF / ANSI 372 Certified

17YBCVC-100NL	1"	FPT	(1) 1/8" FPT	(1) 1/4" FPT, (1) 1/8" FPT	10	60	\$ 22.51
17YBCVC-125NL	1-1/4"	FPT	(1) 1/8" FPT	(1) 1/4" FPT, (1) 1/8" FPT	5	40	\$ 35.18

BRONZE CHECK VALVES

Bronze check valves ensure that fluid flows in one direction only.



Part No.	Size	Connection Type	Quantity List		
			L1	L2	Price - A

List Price Effective: March 29, 2021



Boshart, Standard, Poppet Material: Cast Bronze, Seal Material: Nitrile Rubber, Temperature Range: Up to 180°F (82°C), Maximum Pressure: 200 PSI
• NSF / ANSI 372 Certified

17CV050NL	1/2"	FPT	10	100	\$ 15.46
17CV075NL	3/4"	FPT	10	80	\$ 20.23
17CV100NL	1"	FPT	10	60	\$ 28.40
17CV125NL	1-1/4"	FPT	5	40	\$ 46.10
17CV150NL	1-1/2"	FPT	5	30	\$ 52.37
17CV200NL	2"	FPT	5	20	\$ 106.58



Boshart, Standard, Poppet Material: Cast Bronze, Seal Material: Nitrile Rubber, Temperature Range: Up to 180°F (82°C), Maximum Pressure: 200 PSI

17CVMF-125-100NL	1-1/4" x 1"	MPT x FPT	10	60	\$ 51.39
------------------	-------------	-----------	----	----	----------



Flomatic Valves, Standard, Poppet Material: Stainless Steel, Seal Material: Viton, Spring Material: Stainless Steel, Temperature Range: Up to 400°F (204°C), Maximum Pressure: 100 PSI
• NSF / ANSI 372 Certified

17-4030HTE	3/4"	FPT			\$ 150.04
17-4031HTE	1"	FPT			\$ 151.71
17-4032HTE	1-1/4"	FPT			\$ 208.39
17-4033HTE	1-1/2"	FPT			\$ 276.74
17-4034HTE	2"	FPT			\$ 375.10

Contact your sales rep for any further information

Toll Free: 1-800-561-3164
boshart.com

BRONZE CHECK VALVES

Part No.	Size	Connection Type	Quantity		List Price - A
			L1	L2	

List Price Effective: March 29, 2021



Flomatic Valves, Hex, Poppet Material: Acetal, Seal Material: Nitrile Rubber, Spring Material: Stainless Steel, Temperature Range: Up to 180°F (82°C), Maximum Pressure: 400 PSI
• NSF / ANSI 372 Certified

17-4201E	1"	FPT			\$ 105.65
17-4202E	1-1/4"	FPT	36		\$ 136.70



Flomatic Valves, Standard, Poppet Material: Acetal, Seal Material: Nitrile Rubber, Spring Material: Stainless Steel, Temperature Range: Up to 180°F (82°C), Maximum Pressure: 400 PSI
• NSF / ANSI 372 Certified

17-5118E	1/4"	FPT	10		\$ 109.28
17-5159E	3/8"	FPT	10		\$ 109.85
17-4029E	1/2"	FPT	100		\$ 79.92
17-4030E	3/4"	FPT	100		\$ 80.94
17-4031E	1"	FPT	1	50	\$ 84.38
17-4032E	1-1/4"	FPT	36		\$ 117.08
17-4033E	1-1/2"	FPT	25		\$ 163.38
17-4034E	2"	FPT	16		\$ 263.41
17-4035E	2-1/2"	FPT			\$ 1,130.31
17-4036E	3"	FPT			\$ 1,363.71
17-4037E	4"	FPT			\$ 2,362.32



Flomatic Valves, Hex - Long Threads, Poppet Material: Acetal, Seal Material: Nitrile Rubber, Spring Material: Stainless Steel, Temperature Range: Up to 180°F (82°C), Maximum Pressure: 400 PSI
• NSF / ANSI 372 Certified

17-4201XLE	1"	MPT x FPT	36		\$ 101.69
17-4242XLE	1-1/4"	MPT x FPT	36		\$ 131.70



Flomatic Valves, Hex, Poppet Material: Acetal, Seal Material: Nitrile Rubber, Spring Material: Stainless Steel, Temperature Range: Up to 180°F (82°C), Maximum Pressure: 400 PSI
• NSF / ANSI 372 Certified
• 17-4221LE has longer threads for use with PVC pipe.
• 17-42 Series is hex shaped for easy wrenching.

17-4071E	1"	MPT x FPT	49		\$ 104.13
17-4221LE	1-1/4" x 1"	MPT x FPT	50		\$ 86.69
17-4242E	1-1/4"	MPT x FPT	36		\$ 115.03
17-4223E	1-1/2" x 1-1/4"	MPT x FPT	36		\$ 166.71
17-4079E	2"	MPT x FPT	16		\$ 273.41

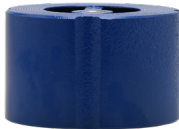
CAST IRON CHECK VALVES

Cast iron check valves ensure that fluid flows in one direction only. They are coated with blue epoxy coating.



Part No.	Size	Connection Type	Quantity		List Price - A
			L1	L2	

List Price Effective: April 27, 2020



Flomatic Valves, Standard, Poppet Material: Bronze, Spring Material: Stainless Steel, Temperature Range: Up to 180°F (82°C), Maximum Pressure: 200 PSI
• NSF / ANSI 372 Certified
• 2" to 6" ANSI 125 / 250
• 10" ANSI 125

18WSCVCI-2	2"	Wafer			\$ 713.75
18WSCVCI-2.5	2-1/2"	Wafer			\$ 788.88
18WSCVCI-3	3"	Wafer			\$ 826.44
18WSCVCI-4	4"	Wafer			\$ 1,083.62
18WSCVCI-5	5"	Wafer			\$ 2,138.35
18WSCVCI-6	6"	Wafer			\$ 1,950.52
18WSCVCI-8	8"	Flange			\$ 3,493.60
18WSCVCI-10	10"	Wafer			\$ 5,290.96

Contact your sales rep for any further information

Toll Free: 1-800-561-3164
boshart.com

CAST IRON CHECK VALVES

Part No.	Size	Connection Type	Quantity		List Price - A
			L1	L2	

List Price Effective: April 27, 2020



Flomatic Valves, Split Disc, Spring Material: Stainless Steel, Temperature Range: Up to 180°F (82°C), Maximum Pressure: 200 PSI
 • NSF / ANSI 372 Certified

18SDCVCI-2	2"	Wafer			\$ 580.82
18SDCVCI-2.5	2-1/2"	Wafer			\$ 673.29
18SDCVCI-3	3"	Wafer			\$ 748.42
18SDCVCI-4	4"	Wafer			\$ 953.59
18SDCVCI-5	5"	Wafer			\$ 1,537.30
18SDCVCI-6	6"	Wafer			\$ 1,618.21
18SDCVCI-8	8"	Wafer			\$ 2,407.08
18SDCVCI-10	10"	Wafer			\$ 3,638.08
18SDCVCI-12	12"	Wafer			\$ 5,464.34



Flomatic Valves, Globe, Poppet Material: Brass, Spring Material: Stainless Steel, Temperature Range: Up to 180°F (82°C), Maximum Pressure: 200 PSI
 • NSF / ANSI 372 Certified

18GSCVCI-2	2"	Flange			\$ 1,031.61
18GSCVCI-2.5	2-1/2"	Flange			\$ 1,381.26
18GSCVCI-3	3"	Flange			\$ 1,514.18
18GSCVCI-4	4"	Flange			\$ 1,990.97
18GSCVCI-5	5"	Flange			\$ 3,482.04
18GSCVCI-6	6"	Flange			\$ 3,216.19
18GSCVCI-8	8"	Flange			\$ 5,059.79
18GSCVCI-10	10"	Flange			\$ 7,585.35
18GSCVCI-12	12"	Flange			\$ 15,005.99

DUCTILE IRON CHECK VALVES

Ductile iron check valves ensure that fluid flows in one direction only.



Part No.	Size	Connection Type	Quantity		List Price - A
			L1	L2	

List Price Effective: April 27, 2020



Flomatic Valves, Standard, Poppet Material: Acetal, Seal Material: Nitrile Rubber, Temperature Range: Up to 180°F (82°C), Maximum Pressure: 400 PSI
 • NSF / ANSI 372 Certified

174031DI	1"	FPT	49		\$ 57.25
174032DI	1-1/4"	FPT	36		\$ 80.36
174033DI	1-1/2"	FPT	25		\$ 109.81
177937	2"	FPT	16		\$ 203.39
177936	2-1/2"	FPT			\$ 486.80
177938	3"	FPT	5		\$ 685.19
177939	4"	FPT	4		\$ 1,065.30
174088	5"	FPT			\$ 1,975.55
174089	6"	FPT			\$ 2,450.68
174090	8"	FPT			\$ 4,326.20



Flomatic Valves, VFD, Poppet Material: Ductile Iron, Seal Material: Nitrile Rubber, Temperature Range: Up to 180°F (82°C), Maximum Pressure: 600 PSI
 • NSF / ANSI 372 Certified

177937VFD	2"	FPT			\$ 233.40
177936VFD	2-1/2"	FPT			\$ 621.84
177938VFD	3"	FPT			\$ 856.90
177939VFD	4"	FPT			\$ 1,267.02
174088VFD	5"	FPT			\$ 2,377.33
174089VFD	6"	FPT			\$ 2,870.80
174090VFD	8"	FPT			\$ 5,071.41

Contact your sales rep for any further information

Toll Free: 1-800-561-3164
 boshart.com

DUCTILE IRON CHECK VALVES

Part No.	Size	Connection Type	Quantity		List Price - A
			L1	L2	

List Price Effective: April 27, 2020



Flomatic Valves, DIX, Poppet Material: Ductile Iron, Seal Material: Nitrile Rubber, Temperature Range: Up to 180°F (82°C), Maximum Pressure: 400 PSI
• NSF / ANSI 372 Certified

177938DIX	3"	FPT			\$ 648.51
174089DIX	6"	FPT			\$ 1,867.19
174091DIX	10"	FPT			\$ 7,335.37



Flomatic Valves, VFD, Poppet Material: Ductile Iron, Seal Material: Nitrile Rubber, Temperature Range: Up to 180°F (82°C), Maximum Pressure: 600 PSI
• NSF / ANSI 372 Certified

174084	2"	MPT x FPT	16		\$ 420.12
174083	3"	MPT x FPT	5		\$ 721.87
174077	4"	MPT x FPT			\$ 1,016.95
174075	5"	MPT x FPT			\$ 1,785.50
174087	6" x 5"	MPT x FPT			\$ 1,800.50
174081	6"	MPT x FPT			\$ 2,055.57

PLASTIC CHECK VALVES

Plastic check valves ensure that fluid flows in one direction only.



Part No.	Size	Connection Type	Quantity		List Price - A
			L1	L2	

List Price Effective: April 27, 2020



Flomatic Valves, Primary Material: Acetal, Poppet Material: Nylon 11, Seal Material: Viton, Spring Material: Stainless Steel, Temperature Range: Up to 180°F (82°C), Maximum Pressure: 150 PSI
• NSF / ANSI 372 Certified

175239	1/2"	FPT			\$ 63.02
175359	3/8"	FPT	10		\$ 48.15



Flomatic Valves, Primary Material: Polypropylene, Poppet Material: Polypropylene, Seal Material: Viton, Spring Material: Stainless Steel, Temperature Range: Up to 180°F (82°C), Maximum Pressure: 150 PSI
• NSF / ANSI 372 Certified

175357	1/2"	FPT	10		\$ 64.77
175358	3/4"	FPT	10		\$ 78.77



Boshart, Primary Material: PVC, Seal Material: EPDM, Spring Material: 304 Stainless Steel, Temperature Range: Up to 140°F (60°C), Maximum Working Pressure: 100 PSI @ 73°F

1710-05	1/2"	FPT	10	120	\$ 6.09
1710-07	3/4"	FPT	120		\$ 6.67
1710-10	1"	FPT	8	80	\$ 9.75
1710-12	1-1/4"	FPT	6	60	\$ 13.03
1710-15	1-1/2"	FPT	60		\$ 13.47
1710-20	2"	FPT	40		\$ 16.29
1710-30	3"	FPT	6		\$ 181.78
1710S-05	1/2"	Socket	120		\$ 6.09
1710S-07	3/4"	Socket	120		\$ 6.67
1710S-10	1"	Socket	80		\$ 9.75
1710S-12	1-1/4"	Socket	60		\$ 13.03
1710S-15	1-1/2"	Socket	60		\$ 13.47
1710S-20	2"	Socket	40		\$ 16.29



Boshart, Primary Material: PVC, Seal Material: Nitrile Rubber, Spring Material: Stainless Steel, Maximum Working Pressure: 150 PSI @ 73°F
• NSF / ANSI 14, 61 & 372 Certified
• Threads: ASME / ANSI B1.20.1

17PCV075	3/4"	FPT	20		\$ 8.04
17PCV100	1"	FPT	20		\$ 8.94
17PCV125	1-1/4"	FPT	20		\$ 11.31
17PCV150	1-1/2"	FPT	20		\$ 14.44
17PCV200	2"	FPT	10		\$ 32.09



Contact your sales rep for any further information

Toll Free: 1-800-561-3164
boshart.com

STAINLESS STEEL CHECK VALVES

Stainless steel check valves ensure that fluid flows in one direction only. They have a higher corrosion resistance.



Part No.	Size	Connection Type	Quantity List		
			L1	L2	Price - A

List Price Effective: May 14, 2021



Boshart, Standard, Poppet Material: 304 Stainless Steel, Seal Material: Viton, Temperature Range: Up to 180°F (82°C), Maximum Pressure: 200 PSI
 • NSF / ANSI 372 Certified

17CVSS-050	1/2"	FPT	10	100	\$ 25.80
17CVSS-075	3/4"	FPT	10	80	\$ 34.11
17CVSS-100	1"	FPT	10	60	\$ 48.11
17CVSS-125	1-1/4"	FPT	5	40	\$ 64.50
17CVSS-150	1-1/2"	FPT	5	30	\$ 87.23
17CVSS-200	2"	FPT	5	20	\$ 147.36
17CVSS-300	3"	FPT	6		\$ 624.08
17CVSS-400	4"	FPT	3		\$ 1,172.08
17CVSSMF-125-100	1-1/4" x 1"	MPT x FPT	10	60	\$ 64.06



Flomatic Valves, Hex, Poppet Material: Delrin, Seal Material: Nitrile Rubber, Spring Material: Stainless Steel, Temperature Range: Up to 180°F (82°C), Maximum Pressure: 400 PSI
 • NSF / ANSI 372 Certified

17-4201SS2	1"	FPT			\$ 79.64
17-4202SS2	1-1/4"	FPT		36	\$ 126.04



Flomatic Valves, Standard, Poppet Material: Stainless Steel, Seal Material: Viton, Spring Material: Stainless Steel, Temperature Range: Up to 400°F (204°C), Maximum Pressure: 450 PSI
 • NSF / ANSI 372 Certified

17-4031S6	1"	FPT	50		\$ 158.38
17-4032S6	1-1/4"	FPT	36		\$ 243.40
17-4033S6	1-1/2"	FPT	25		\$ 308.42
17-4034S6	2"	FPT	16		\$ 450.13
17-7938S6-PLG	3"	FPT	5		\$ 1,732.15
17-7939S6-PLG	4"	FPT	4		\$ 2,587.39



Flomatic Valves, Union, Poppet Material: Acetal, Seal Material: Nitrile Rubber, Spring Material: Stainless Steel, Temperature Range: Up to 180°F (82°C), Maximum Pressure: 150 PSI
 • NSF / ANSI 372 Certified

Dual check valves are designed for installation on potable water lines to protect against both backsiphonage and backpressure of polluted water into the potable water supply.

17-GF8080S6	3/4"	FPT			\$ 239.15
17-GF8081S6	1"	FPT			\$ 232.86

AUTO-DRAIN VALVE

This auto-drain valve is designed for use in domestic well water systems, irrigation and sprinkler systems, agricultural watering. It provides automatic drainage of water lines when line pressure drops below 10 PSI (approx. 5 gpm) in a closed water system.

Stainless steel spring, fasteners & valve disc.



Part No.	Size	Connection Type	Quantity List		
			L1	L2	Price - A

List Price Effective: April 27, 2020



Flomatic Valves, Temperature Range: Up to 180°F (82°C), Maximum Pressure: 400 PSI
 • NSF / ANSI 372 Certified

17-4501P	1"	MPT	12		\$ 80.02
----------	----	-----	----	--	----------

Contact your sales rep for any further information

Toll Free: 1-800-561-3164
 boshart.com

REPLACEMENT BREAK-OFF PLUG

These break off plugs are used with check valves. When broken off the riser pipe is able to drain. They are threaded to install into the valve.



Part No.	Size	Quantity	List	
			L1	L2 Price - A

List Price Effective: April 27, 2020

Flomatic Valves, Temperature Range: Up to 180°F (82°C), Maximum Pressure: 600 PSI
• NSF / ANSI 372 Certified



1776098-6	3/8"	For 3" valves		\$ 115.03
1776098-7	3/8"	For 4" valves		\$ 115.03
1776098	3/8"	For 5" or 6" valves		\$ 115.03
1776098-11	1/2"	For 10" valves		\$ 166.71

BALL CHECK VALVES

Ball check valves ensure that fluid flows in one direction only. This is done by using a weighted ball to stop the flow when the pressure of the flow decreases preventing backflow.
• NSF / ANSI 372 Certified



Part No.	Size	Connection Type	Quantity	
			L1	L2 Price - A

List Price Effective: April 27, 2020

Flomatic Valves, PVC, Ball Material: Nitrile Rubber, Temperature Range: Up to 150°F (66°C), Maximum Pressure: 100 PSI
Slip connection available. Contact inside sales for details.



172131T	1"	FPT		\$ 141.59
172132T	1-1/4"	FPT		\$ 121.52
172133T	1-1/2"	FPT		\$ 194.53
172134T	2"	FPT		\$ 198.33

Flomatic Valves, Cast Iron, Ball Material: Nitrile Rubber, Temperature Range: Up to 180°F (82°C), Maximum Pressure: 150 PSI



172141	1-1/4"	FPT		\$ 274.52
172142	2"	FPT		\$ 369.88

Flomatic Valves, Cast Iron, Ball Material: Phenolic, Temperature Range: Up to 180°F (82°C), Maximum Pressure: 150 PSI



Note: 3" & 4" don't have an access cover.

173232	1"	FPT		\$ 534.59
173233	1-1/4"	FPT		\$ 546.15
173234	1-1/2"	FPT	10	\$ 563.48
173235	2"	FPT		\$ 661.73
173236	2-1/2"	FPT		\$ 1,545.97
172044	3"	FPT		\$ 1,589.31
172045	4"	Flange		\$ 2,883.88

Y-STRAINER

Y-Strainers come with a clean-out plug and are not rated for steam application.
• NSF / ANSI 372 Certified



Part No.	Size	Connection Type	Quantity	
			L1	L2 Price - A

List Price Effective: April 27, 2020

Flomatic Valves, Bronze, Temperature Range: Up to 180°F (82°C), Maximum Pressure: 400 PSI



16YS-S-05	1/2"	FPT		\$ 34.27
16YS-S-07	3/4"	FPT	10	\$ 60.59
16YS-S-10	1"	FPT	6	\$ 88.01
16YS-S-12	1-1/4"	FPT	6	\$ 127.67
16YS-S-15	1-1/2"	FPT	2	\$ 186.85
16YS-S-20	2"	FPT	8	\$ 305.06

Contact your sales rep for any further information

Toll Free: 1-800-561-3164
boshart.com

BRASS FOOT VALVES

Brass foot valves prevent water from back flowing into the water source.



Part No.	Size	Connection Type	Quantity List		
			L1	L2	Price - A

List Price Effective: March 29, 2021



Boshart, Poppet Material: Cast Brass, Seal Material: Nitrile Rubber, Temperature Range: Up to 180°F (82°C), Maximum Pressure: 200 PSI
• NSF / ANSI 372 Certified

17YBFV050NL	1/2"	FPT	10	100	\$ 13.42
17YBFV075NL	3/4"	FPT	10	80	\$ 16.42
17YBFV100NL	1"	FPT	10	60	\$ 22.62
17YBFV125NL	1-1/4"	FPT	5	40	\$ 31.69
17YBFV150NL	1-1/2"	FPT	5	30	\$ 45.23
17YBFV200NL	2"	FPT	5	20	\$ 70.37
17YBFV300NL	3"	FPT	8		\$ 277.60
17YBFV400NL	4"	FPT	4		\$ 489.30

BRONZE FOOT VALVES

Bronze foot valves prevent water from back flowing into the water source.



Part No.	Size	Connection Type	Quantity List		
			L1	L2	Price - A

List Price Effective: April 27, 2020



Boshart, Standard, Poppet Material: Bronze, Seal Material: Nitrile Rubber, Temperature Range: Up to 180°F (82°C), Maximum Pressure: 200 PSI
• NSF / ANSI 372 Certified

17FV050NL	1/2"	FPT	10	100	\$ 16.79
17FV075NL	3/4"	FPT	10	80	\$ 19.55
17FV100NL	1"	FPT	10	60	\$ 26.73
17FV125NL	1-1/4"	FPT	5	40	\$ 35.07
17FV150NL	1-1/2"	FPT	5	30	\$ 48.69
17FV200NL	2"	FPT	5	20	\$ 84.73
17FV300NL	3"	FPT	8		\$ 378.90



Flomatic Valves, Standard, Poppet Material: Acetal, Seal Material: Nitrile Rubber, Spring Material: Stainless Steel, Temperature Range: Up to 180°F (82°C), Maximum Pressure: 250 PSI
• NSF / ANSI 372 Certified

17-4100E	3/4"	FPT	100		\$ 73.12
17-4101E	1"	FPT	49		\$ 81.44
17-4103E	1-1/4"	FPT	36		\$ 98.91
17-4104E	1-1/2"	FPT	25		\$ 158.76
17-4105E	2"	FPT	16		\$ 251.24
17-4106E	2-1/2"	FPT			\$ 831.96
17-4107E	3"	FPT			\$ 1,146.92
17-4108E	4"	FPT			\$ 1,911.53



Flomatic Valves, Slim, Poppet Material: Acetal, Seal Material: Nitrile Rubber, Spring Material: Stainless Steel, Temperature Range: Up to 180°F (82°C), Maximum Pressure: 250 PSI
• NSF / ANSI 372 Certified
• Will pass through a 2" pipe

17-4102E	1-1/4"	FPT	49		\$ 95.51
----------	--------	-----	----	--	----------

Contact your sales rep for any further information

Toll Free: 1-800-561-3164
boshart.com

CAST IRON FOOT VALVES

Cast iron foot valves prevent water from back flowing into the water source.



Part No.	Size	Connection Type	Quantity		List Price - A
			L1	L2	

List Price Effective: April 27, 2020



Flomatic Valves, Poppet Material: Acetal, Seal Material: Nitrile Rubber, Spring Material: Stainless Steel, Temperature Range: Up to 180°F (82°C), Maximum Pressure: 250 PSI
• NSF / ANSI 372 Certified

174764	2"	FPT			\$ 329.42
174765	2-1/2"	FPT			\$ 456.57
174766	3"	FPT			\$ 569.26
174767	4"	FPT			\$ 699.30
174789	6"	FPT			\$ 2,883.88

PLASTIC FOOT VALVES

Plastic foot valves prevent water from back flowing into the water source.



Part No.	Size	Connection Type	Quantity		List Price - A
			L1	L2	

List Price Effective: April 27, 2020



Flomatic Valves, Primary Material: Acetal, Poppet Material: Nylon 11, Seal Material: Nitrile Rubber, Spring Material: Stainless Steel, Temperature Range: Up to 140°F (60°C), Maximum Working Pressure: 150 PSI @ 73°F
• NSF / ANSI 372 Certified

175619	3/8"	FPT	10		\$ 32.46
175620	1/2"	FPT	10		\$ 55.90



Boshart, Primary Material: PVC, Poppet Material: Acetal, Seal Material: Nitrile Rubber, Spring Material: Stainless Steel, Maximum Pressure: 150 PSI
• NSF / ANSI 372 Certified



17PFV075	3/4"	FPT	20		\$ 7.95
17PFV100	1"	FPT	20		\$ 8.55
17PFV125	1-1/4"	FPT	20		\$ 10.34
17PFV150	1-1/2"	FPT	20		\$ 13.15
17PFV200	2"	FPT	10		\$ 19.03
17PFV-250	2-1/2"	FPT	12		\$ 84.03
17PFV-300	3"	FPT	12		\$ 119.69
17PFVB100125	1" or 1-1/4"	Insert	20		\$ 13.70
17PFVM075150	3/4" - 1-1/2"	MPT	20		\$ 14.22

Contact your sales rep for any further information

Toll Free: 1-800-561-3164
boshart.com

STAINLESS STEEL FOOT VALVES

Stainless steel foot valves prevent water from back flowing into the water source. They have a higher corrosion resistance.



Part No.	Size	Connection Type	Quantity		List
			L1	L2	Price - A
List Price Effective: May 14, 2021					
Boshart, Poppet Material: 304 Stainless Steel, Seal Material: Viton, Temperature Range: Up to 180°F (82°C), Maximum Pressure: 200 PSI					
• NSF / ANSI 372 Certified					
17FVSS-050	1/2"	FPT	10	100	\$ 28.86
17FVSS-075	3/4"	FPT	10	80	\$ 33.74
17FVSS-100	1"	FPT	10	60	\$ 47.53
17FVSS-125	1-1/4"	FPT	5	40	\$ 60.26
17FVSS-150	1-1/2"	FPT	5	30	\$ 78.94
17FVSS-200	2"	FPT	5	20	\$ 141.32
17FVSS-300	3"	FPT	8		\$ 648.83
17FVSS-400	4"	FPT	4		\$ 1,068.10

FLAPPER FOOT VALVES

Flapper foot valves prevent water from back flowing into the water source. They use a flapper that closes when the pressure of the flow decreases ensuring there is no backflow.



Part No.	Size	Connection Type	Quantity		List
			L1	L2	Price - A
			List Price Effective: April 27, 2020		
Boshart, PVC, Seal Material: Nitrile Rubber, 150 PSI @ 73°F					
17PFVF-300	3"	FPT	6		\$ 119.69
17PFVF-400	4"	FPT	6		\$ 211.82
17PFVF-600	6"	FPT	2		\$ 854.59
Boshart, Cast Iron, Temperature Range: Up to 80°F (27°C), Maximum Pressure: 20 PSI					
174964	2"	FPT			\$ 170.78
174966	3"	FPT			\$ 378.90
174967	4"	FPT			\$ 534.77
174969	6"	FPT			\$ 1,175.97
Flomatic Valves, Cast Iron, Seal Material: EPDM, Temperature Range: Up to 180°F (82°C), Maximum Pressure: 200 PSI					
18FLFVCI-2	2"	Flange			\$ 2,970.57
18FLFVCI-2.5	2-1/2"	Flange			\$ 3,002.35
18FLFVCI-3	3"	Flange			\$ 3,031.25
18FLFVCI-4	4"	Flange			\$ 3,664.09
18FLFVCI-5	5"	Flange			\$ 4,955.76
18FLFVCI-6	6"	Flange			\$ 5,579.93
18FLFVCI-8	8"	Flange			\$ 8,070.81
18FLFVCI-10	10"	Flange			\$ 11,200.31
18FLFVCI-12	12"	Flange			\$ 16,916.06

Contact your sales rep for any further information

Toll Free: 1-800-561-3164
boshart.com