

This document provides technical information relating to this specific Flojet model. General information references and further resource locations are also included.

### Features:

- Self-priming
- Dry Run Capable
- Noise absorbing mounts
- Snap-in port fittings
- Built-in bypass
- Corrosion resistant materials

### Contents:

Main module with On/Off rocker switch

Suction Wand and Hose Assembly

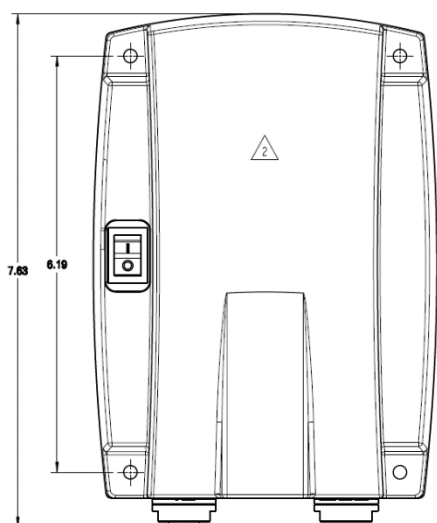
20 ft Discharge Tube

Outlet port fitting kit

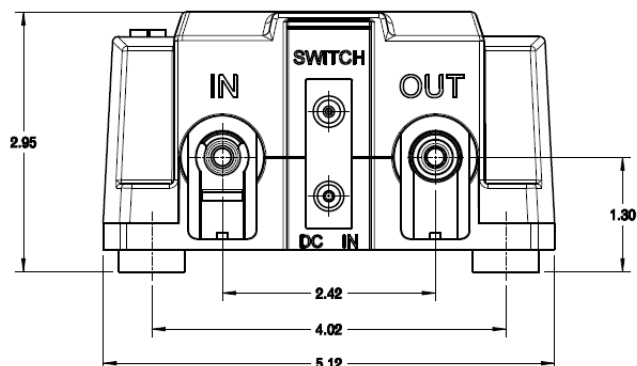
Wall power transformer: 115 VAC US Plug  
12 VDC

IOM: Included (PN 81000454)

Carton type: Retail box



**Dimensional Drawing**  
Notes: Inches



## Specifications:

### General

Part Number:	BW5000-000A
Aftermarket replacement:	N/A
Replaces:	N/A
Application:	Bottled Water Systems
Design:	

### Materials (\*designates wetted path)

Upper Housing*:	Polypropylene 30% glass filled
Lower Housing:	Polypropylene
Check Valve Retainer*:	Polypropylene
Diaphragm*:	Santo
Check Valves*:	EPDM
Switch diaphragm*:	EPDM
PH Seals*:	EPDM
PH Fasteners:	Stainless Steel
Baseplate:	Rubber Feet
Motor Casing:	Plastic

### Hydraulic Performance (at nominal voltage)

Open Flowrate:	0.6 GPM open flow (2.3LPM)
Pressure Switch Cut-Off:	40 PSI (2.7 BAR)
Max Inlet Pressure:	40 PSI (2.8 BAR)
Internal Bypass:	Yes
Fluid Temperature Range:	40°F - 140°F (4°C - 60°C)
IOM:	81000454
Self-Priming Capability:	Up to 9ft (2.7m) dry prime
Run-Dry Capable:	Yes

### Electrical Performance (at nominal voltage)

Nominal Voltage:	12 VDC
Voltage:	Input 100-240 VAC
Cycles:	50/60 Hz
Current:	1.2 Amps Max.
Maximum Pressure:	40 PSI (2.8 bar) Max.

### Compliance

UL:	Yes
NSF:	Yes
CE:	No
RCM:	No
UKCA:	No
WEEE:	No
Country of Origin:	China
HTS Code:	8413.50.0050

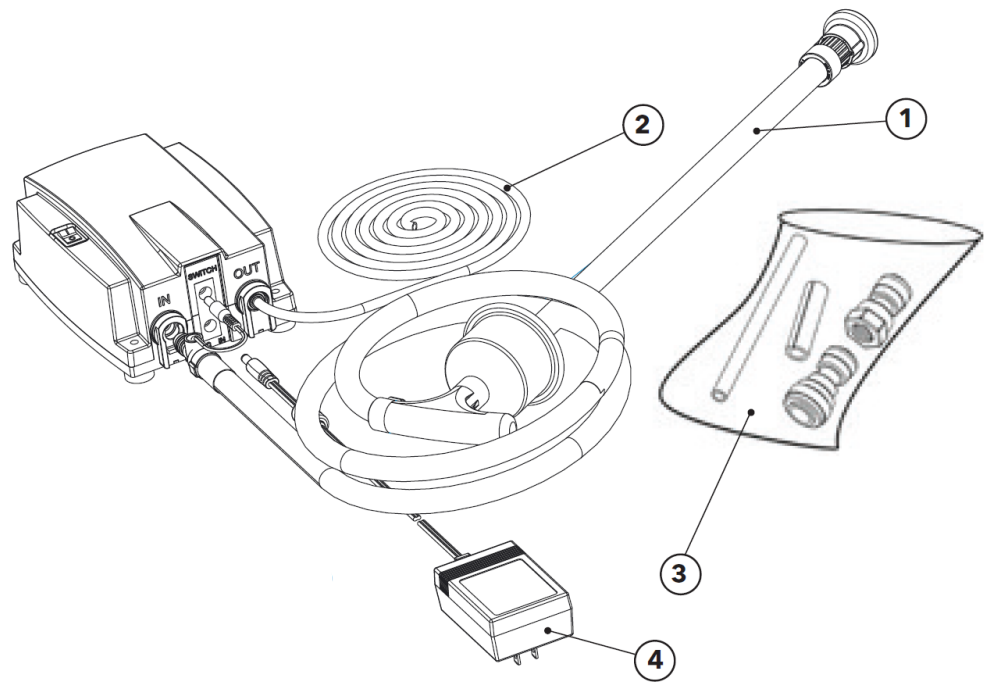
### Other Information

Other Information:	Water dispense
Ambient Temp Range:	32°F - 140°F (0°C - 60°C)
IP Rating:	IPX4
Carton Dimensions:	10.5x24x3.25" (266.7x609.6x82.55 mm)
Weight:	4.6 lb. (2.1 kg)
UPC Code:	705474207466

**Pump Service Kits & Spares:**

ITEM	DESCRIPTION
1. Suction Wand	Suction Wand and Hose Assembly
2. Discharge Tube	20 ft (6.1m) of 1/4 in. (6.35mm)
3. Outlet port fitting kit	Fittings and connection aids for connecting outlet line from BW5000 to dispense machine
4. Wall power transformer	Wall power transformer

**Exploded View:**



## Installation and Operation

For guidance on proper installation and operation of this pump, as well as for any warnings or cautions involving use, please consult the appropriate IOM for the pump. Printed IOM's are supplied with the pumps and are also available online.

## Resources & Contact Information

**IOM:** On website; hard copies with pumps

**Customer Service:** Refer to contact info at our website

**Warranty:** Information included in IOM

**Website:** [www.xylem.com/Flojet](http://www.xylem.com/Flojet)

**Note:** Specifications provided for guidance only. We reserve the right to change specifications without prior notice.



**Xylem Inc. — USA**  
17942 Cowan  
Irvine, CA 92614

**Xylem Inc. — UK**  
Harlow Innovation Park,  
London Road,  
Harlow, Essex, CM17 9LX

**Xylem Inc. — CHINA**  
30/F Tower A, 100 Zunyi Road,  
Shanghai 200051

**Xylem Inc. — HUNGARY KFT**  
2700 Cegléd  
Külso-Káta út 41

**Xylem Inc. — AUSTRALIA**  
2/2 Capicure Drive  
Eastern Creek, NSW 2766

[www.xylem.com/flojet](http://www.xylem.com/flojet)

© 2023 Xylem Inc. All rights reserved  
Flojet is a trademark of Xylem Inc. or one of its subsidiaries  
BW5000-000A Rev. A 05/2023