

VERSAX® VS2-9 Self-priming pump

TECH-NOTE

Seal kit (801304)

Overview:

The seal kit contains all the parts needing to be changed in the pump end of the product when doing a general repair, have a seal leakage or needing a mechanical seal replacement. It is recommended for pumps having a dripping mechanical seal up to a steady dribble. If the pump is spraying out the back of the pump yoke near the engine's drive shaft then the mechanical seal has completely failed and more parts may be required than what is provided in this kit.

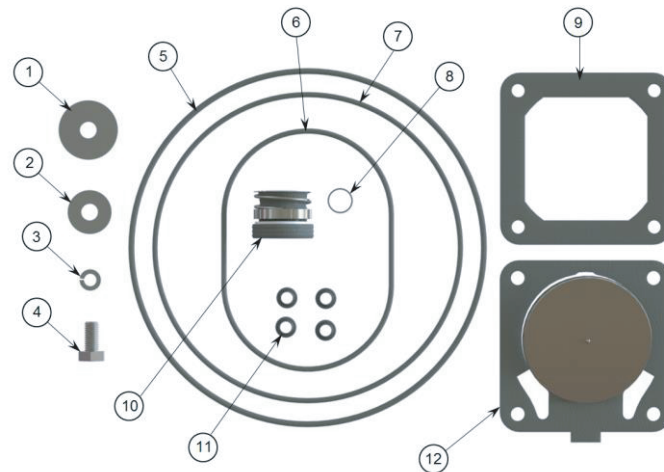
If the pump is operated as per the guidelines provided in the product manual and maintained well, the seal will generally provide a long service life. It is important to note that most seal failures are caused by improper operation and/or maintenance of the pump. Therefore, if the mechanical seal of the pump needs to be replaced often, then it is important to review the manual to make sure that the pump is being operated and maintained per the factory guidelines.

When doing a general repair of the pump that requires the pump to be taken apart, it is always recommended that all the seals of the pump be replaced. Replacing all the seals prevents the pump from leaking after it has been re-assembled due to older seals that have taken a set. It also eliminates the pump from being taken apart again at a later unplanned date because an older seal that has past its service life has failed.

TECH-NOTE

Kit Contents:

Item	Part No.	Description	Qty
1	800206	VSC134 WASHER IMPELLER M10X40 VERSAX®	1
2	800189	VSC111 WASHER IMPELLER M10X30 VERSAX®	1
3	800220	VSC120 WASHER (SPRING)-IMPELLER VERSAX®	1
4	800207	VSC110 SCREW – IMPELLER VERSAX®	1
5	701292	O-RING #2250040 (METRIC) NITRILE 70 DURO	1
6	800187	VSC119 O-RING SUCTION COVER VERSAX®	1
7	800198	VSC113 O-RING DIFFUSER – INTERS VERSAX®	1
8	800227	VSC122 O-RING FOR DRAIN PLUG VERSAX®	1
9	800224	VSC107 GASKET DISCHARGE VERSAX®	1
10	800200	VSC137 SEAL – MECHANICAL 1" VERSAX®	1
11	800228	VSC123 SEAL FOR BOLT VERSAX®	4
12	800191	VSC116 GASKET CLACKER ASSY VERSAX®	1



Installation:

When doing the installation, care must be taken to follow all the instructions provided in the VERSAX Owner's Manual. The manual can be retrieved from our website at www.waterax.com/products/vs2-9p/ under related documents found by scrolling down on the open screen.

Only white lithium grease should be used on the pump parts when installing. Other greases could cause the composite parts in the pump to swell and seize.

No lubrication other than Pac-Ease or Dawn® dish soap should be used when installing the mechanical seal. Using anything else to install the mechanical seal could cause it to leak or fail prematurely.



WATERAX

All information contained in this document including drawings is proprietary to *WATERAX* and may not be copied, reproduced or used in whole or in part without our prior written permission. The information in this document is subject to change without notice. Model displayed with multiple options. Weight and dimensions are approximated and may vary depending on options.

WATERAX INC.

6635 Henri-Bourassa W.
Montreal, QC H4R 1E1

T 514 637-1818

F 514 637-3985

TF 1 855 616 616-1818

info@waterax.com

waterax.com

To help you stay **#ReadyForWildfires**, we've made a few changes, placing 100% of our focus on manufacturing our core products, portable fire pumps.

To do so, we've established a network of trusted supply and distribution partners that can help us provide *WATERAX* pumps quickly in addition to water-handling equipment and accessories.

For immediate assistance when it comes to pumps and water-handling accessories, please contact your local dealer.

For genuine spare parts, visit our online store.

VERSAX® VS2-9 Self-priming pump is a trademark of Waterax.



**WE MOVE
WATER**