

WALLMOUNT SINK FAUCETS

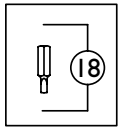
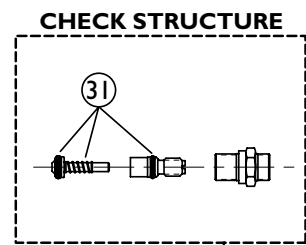
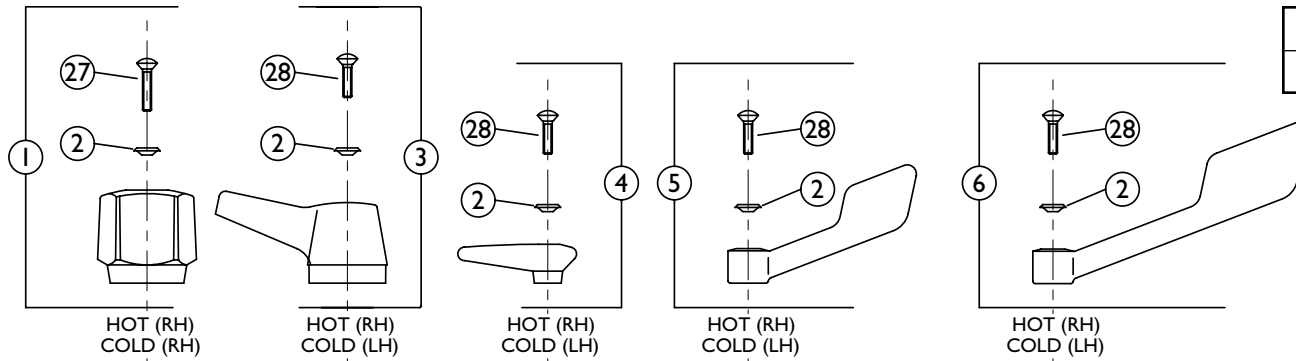
28T1 ___ Series
28T2 ___ Series

Exposed CP w/Rigid Spout 1/Check Stops
Exposed CP w/Rigid Spout w/Check Stops

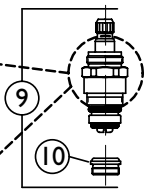
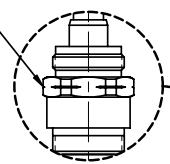


RIGID SPOUTS AND BRACES

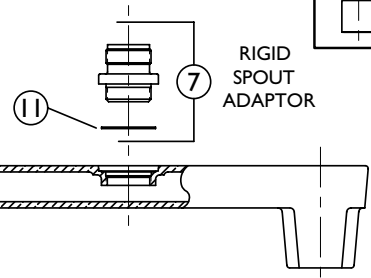
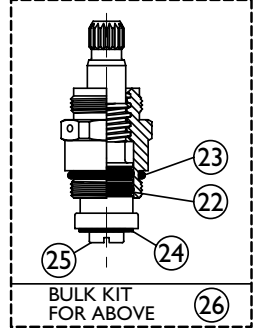
See Page 37



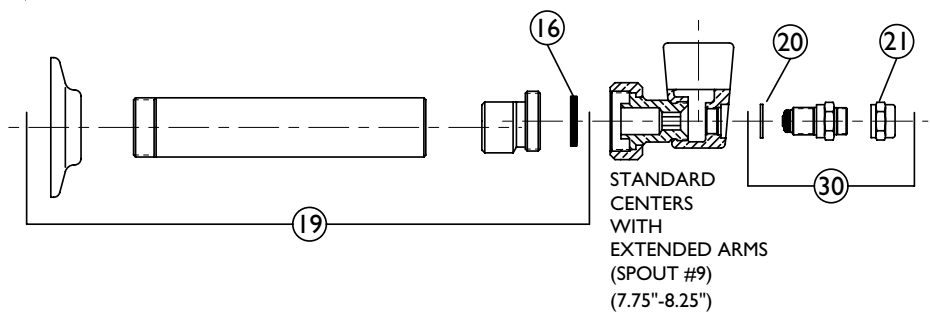
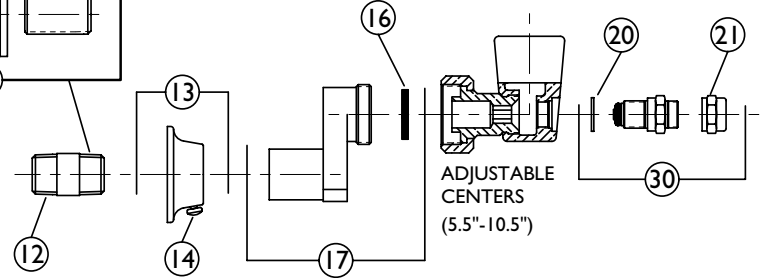
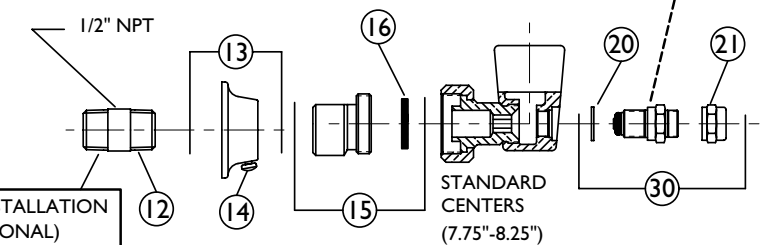
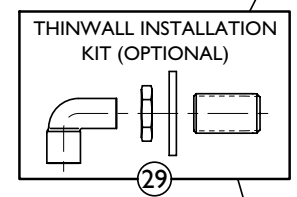
IDENTIFICATION RING ON LH STRUCTURE - NOT ON RH STRUCTURE



TUF-TECK STRUCTURE



TO REPLACE CAST BODY, ORDER COMPLETE PRODUCT

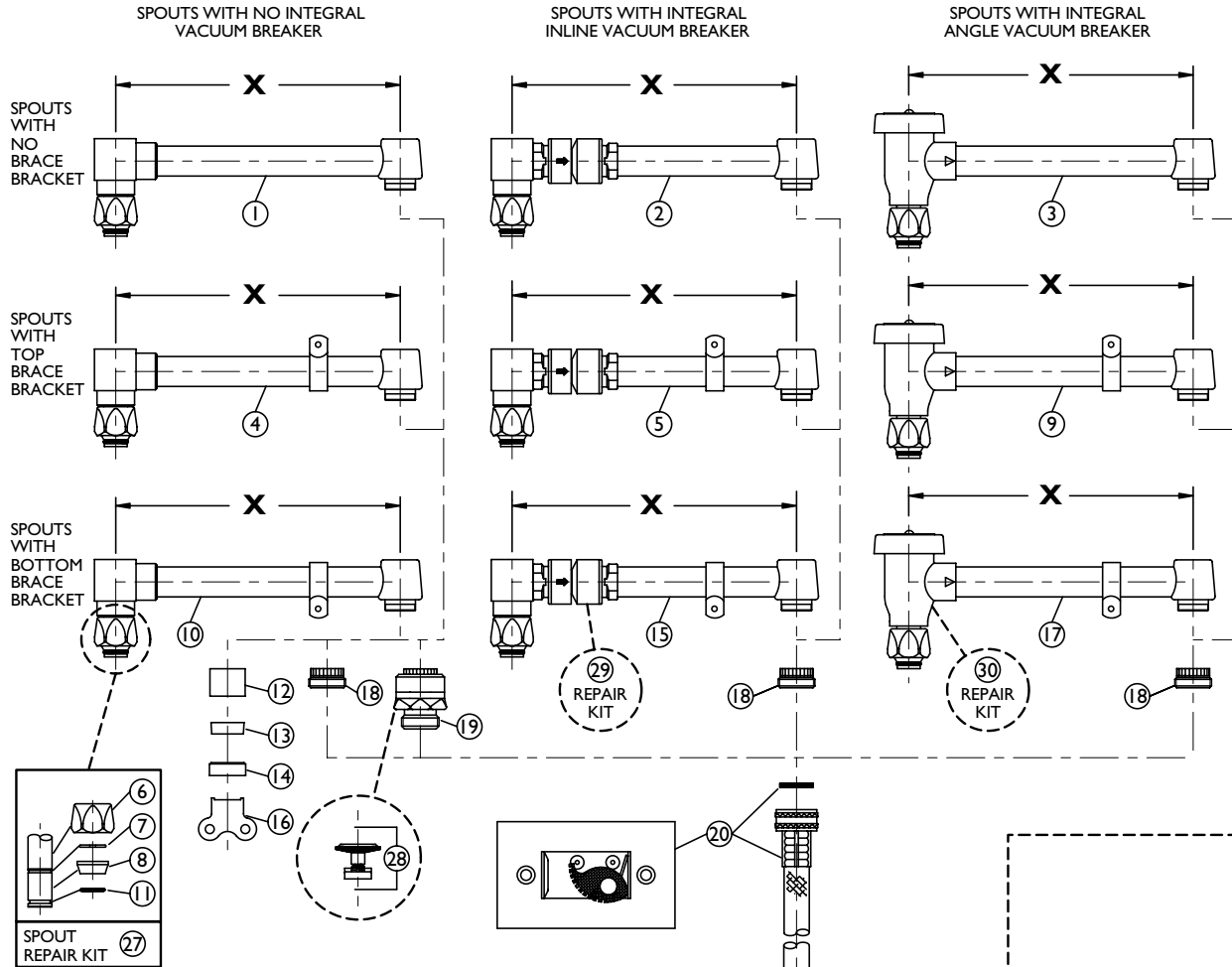


PARTS TABLE ON PAGE 36



ITEM #	PART #	DESCRIPTION
1	76403	5 Fluted Handle, Screw, Red & Blue Index – 1 of each
2	060148A	Red and Blue Index Kit – 12 of each
3	77189	2-3/4" Hooded Lever Blade Handle, Screw, Red & Blue Index – 1 of each
4	76407-1	Three Arm Cross Handle, Screw, Red & Blue Index – 1 of each
5	76405-1	4" Blade Handle, Screw, Red & Blue Index – 1 of each
6	76406-1	6" Wrist Handle, Screw, Red & Blue Index – 1 of each
7	060386A	Rigid/Swivel Spout Adaptor and Fibre Gasket – 1 of each
8	060264A	Sani-Guards Kit – 2 per
9	77260	RH Structure & Renewable Seat <i>(opens to the right – see text under each handle for HOT/COLD side requirements)</i>
	77261	LH Structure & Renewable Seat <i>(opens to the left – see text under each handle for HOT/COLD side requirements)</i>
10	060144A	Renewable Seat Kit – 12 per
11	060469A	Fibre Washer Kit – 12 per
12	060470A	Nipple Kit – 2 per
13	060466A	Wall Flange and Set Screw Kit – 2 of each
14	060387A	Set Screw Package – 10 per
15	060388A	Standard Shanks and Rubber Washers – 2 of each
16	060465A	Rubber Washer Kit – 12 per
17	060471A	Offset Shanks and Rubber Washers – 2 of each
18	060440A	Drive Bit – No. 3 Square
19	060270A	Extended Arm Shank, Rubber Washer, Tube and Flange – 1 of each
20	060390A	Plastic Gasket Kit – 6 per
21	060391A	Cap for Check Structure – 2 per
22	060140A	Stem "O" Ring Kit – 24 per
23	060142A	Structure "O" Ring Kit – 24 per
24	060139A	Seat Washer Kit – 24 per
25	060243A	Screw – 6 per
26	060021A	Bulk Structure Repair Kit – 12 Seat washers (#24), 2 Screws (#25), 24 Stem "O" Rings (#22), 6 Structure "O" Rings (#23), 4 Seats (#10), 18 Structure Fibre Washers (Not Shown)
27	060146A	7/8" Long Handle Screws – 12 per
28	060145A	1 1/16" Long Handle Screws – 12 per
29	060473A	Optional Thin Wall Trim Kit – Shank, Steel Washer, Nut, & Elbow – 2 of each
30	060472A	Check Structure, Gasket and Cap – 2 of each
31	060389A	Check Structure Repair Kit – "O" Rings and Spring – 6 of each



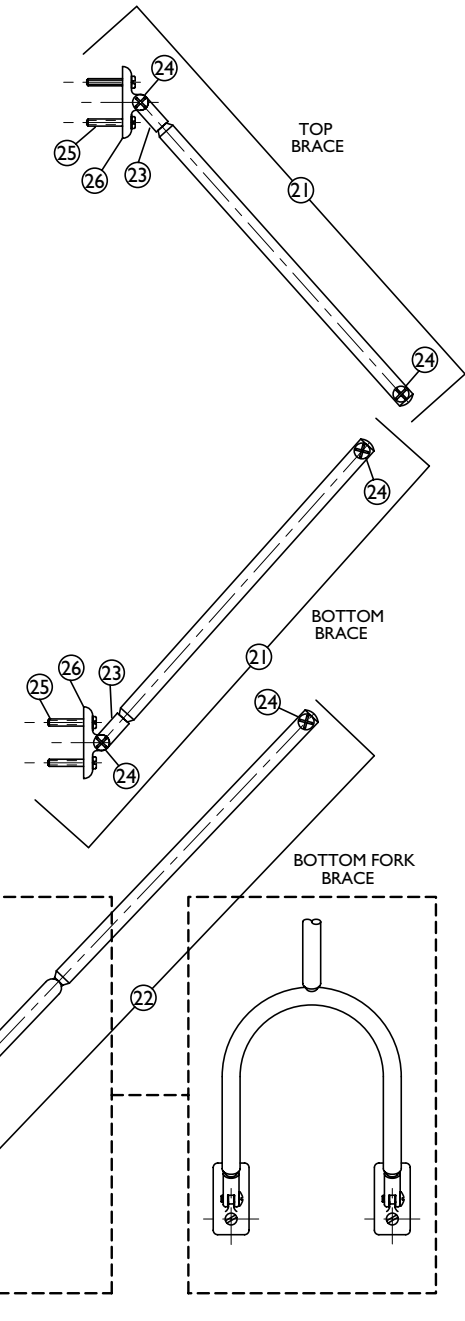


ALL OUTLETS FOR ABOVE SPOUTS HAVE 5/64" DIA.-27 THREADS/INCH FEMALE THREAD

PARTS TABLE ON PAGE 38

MAIN BODY PARTS

See Page 35





ITEM #	PART #	DESCRIPTION
1	77131	Spout with No Brace Bracket or Integral Vacuum Breaker – (X=8")
	77130	Spout with No Brace Bracket or Integral Vacuum Breaker – (X=3.2")
2	060449A	Spout with No Brace Bracket but with an Integral Inline Vacuum Breaker – (X=8")
	060297A	Spout with No Brace Bracket but with an Integral Inline Vacuum Breaker – (X=4.25")
3	77135-0	Spout with No Brace Bracket but with an Integral Angle Vacuum Breaker – (X=8")
	060271A	Spout with No Brace Bracket but with an Integral Angle Vacuum Breaker – (X=3.5")
4	060317A	Spout with Top Brace Bracket and No Integral Vacuum Breaker – (X=8")
5	77454-0	Spout with Top Brace Bracket and Integral Inline Vacuum Breaker – (X=8")
6	060373A	Spout Nut
7	060245A	Retaining Ring Kit – 6 per
8	060244A	Rigid Collar Kit (Brass) – 6 per
9	77136	Spout with Top Brace Bracket and Integral Angle Vacuum Breaker – (X=8")
10	77133	Spout with Bottom Brace Bracket and No Integral Vacuum Breaker – (X=8")
11	060143A	Spout "O" Ring Kit – 24 per
12	77144	Female Moderator and Wrench (#16)
13	77142	Female Aerator – (Not Vandal Resistant)
14	77158	Female Aerator and Wrench (#16)
15	77455-0	Spout with Bottom Brace Bracket and Integral Inline Vacuum Breaker – (X=8")
16	17195	Wrench for Vandal Resistant Outlets
17	77137-0	Spout with Bottom Brace Bracket and Integral Angle Vacuum Breaker – (X=8")
18	060257A	Garden Hose End Adaptor
19	76066	Garden Hose End Vacuum Breaker
20	28T911	48" Hose and Stainless Steel Hanger
21	76094-1	Top or Bottom Wall Brace Assembly
22	76093	Bottom Fork Wall Brace Assembly
23	060392A	Wall Bracket Yoke
24	060147A	Screws – 24 per
25	060393A	Wall Flange Screw Kit – 12 per
26	060474A	Wall Flange
27	060026A	Spout Repair Kit – 1 Rigid Brass Collar (#8), 6 Retaining Rings (#7), 6 Swivel Plastic Collars (#Not Shown), 12 Spout "O" Rings (#11), 1 Spout Nut (#6)
28	500066A	Hose end Vacuum Breaker Repair Kit
29	*	Contact Watts Regulator for Repair Kit for Vacuum Breaker # N9C (3/8")
30	*	Contact Watts Regulator for Repair Kit for Vacuum Breaker # 288A-C (1/2")

