

### Control Panels & Accessories

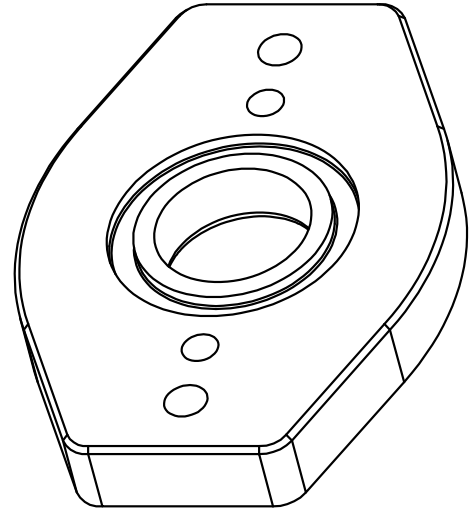
### Specifications:

The Liberty Grinder Retrofit Kit includes everything needed to install a Barnes Razor submersible pump into an existing Liberty grinder guide rail system. The Barnes adapter fits seamlessly onto the Liberty moveable fitting allowing for a quick and easy retrofit install with a Barnes Razor grinder pump.

Note: This kit only works with Barnes Razor models ZSGV and ZOGV. It is incompatible with ZOGP models.

The adapter is made from stainless steel and is powder coated black. The hardware included in this kit are 3/8-16 bolts (qty 2), 3/8 flat washers (qty 2), 1/4-20 bolts (qty 2). All hardware is stainless steel.

Discharge Adapter Kit  
P/N: 147769



### Liberty Grinder Retrofit Kit

Barnes Razor to Liberty Grinder Base



**WARNING:**

CANCER AND REPRODUCTIVE HARM -  
[WWW.P65WARNINGS.CA.GOV](http://WWW.P65WARNINGS.CA.GOV)