

TRADESMAN

MANUFACTURING

INSTALLATION INSTRUCTIONS:

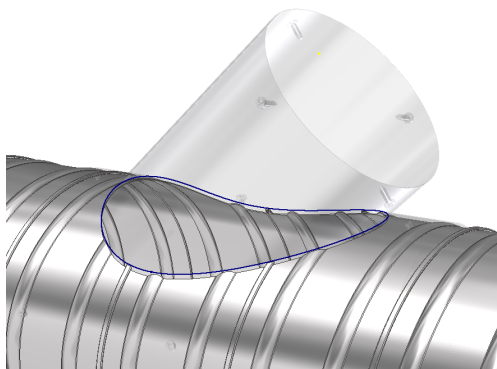
- 1- Position Wye on ducting and trace out the cutout on the inside with a visible marker. Remove Wye and cut on the inside of the traced line.
- 2- Use eight 1/2" sheet metal screws to screw into the ducting and secure it onto place.
- 3- Use four 1/2" sheet metal screws to secure the branching pipe.

NOTE:

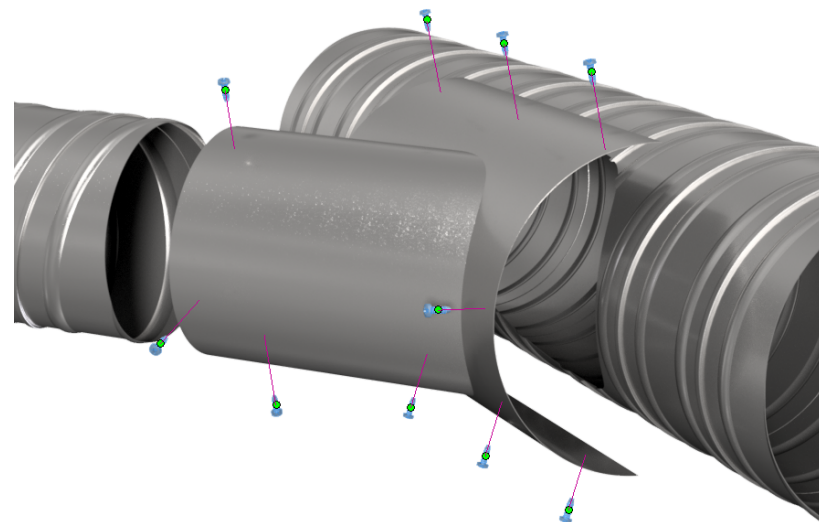
Used for commercial applications. Industrial sealer must be used on all connections .

WARNING!!

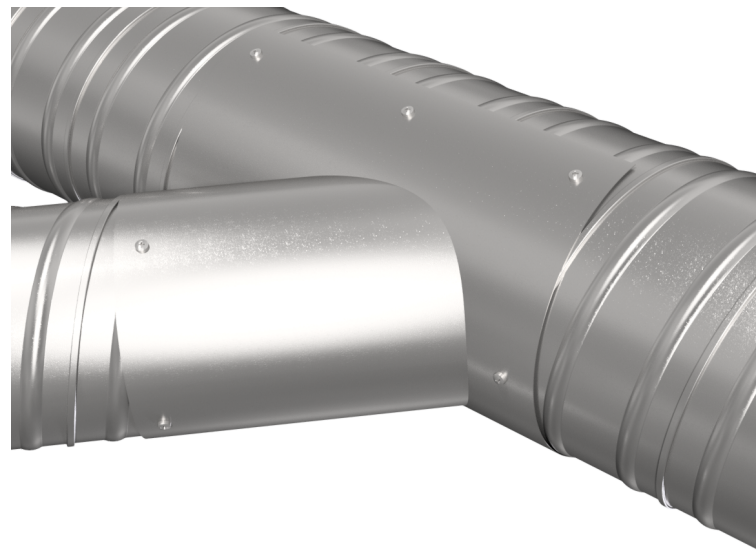
Improper installation may result in damage to product or inefficiencies in the system. Use proper PPE and equipment during cutting, bending, and installation processes. If local codes differ from these instructions follow local building codes.



TRACE VIEW



INSTALLATION VIEW



INSTALLED VIEW

[\(403\) 327-9871](tel:4033279871)

sales@tradesmanmfg.ca

www.tradesmanmfg.ca

Specifications are subject to change without notice or obligation. All Tradesman Manufacturing products are guaranteed against defective material.