

PA-CTNL SERIES NO LEAD CONCRETE TILE / SEPTIC TANK PITLESS ADAPTERS

APPLICATION:

- Easy installation of pitless adapters thru thick concrete tile well casings
- Installation of grinder pumps in concrete holding / septic tank

SPECIFICATION:

- Threads conform to ANSI/ASME B1.20.1
- Heavy duty no lead bronze castings
- Fits 4-1/2" to 12" I.D. casing sizes
- Large gaskets ensure positive seal to well casing
- Chamfered slide for easy installation

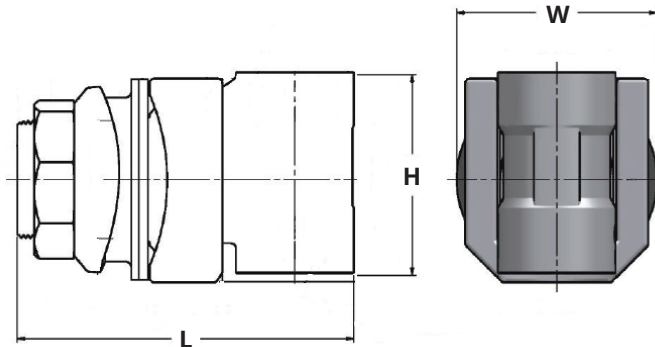
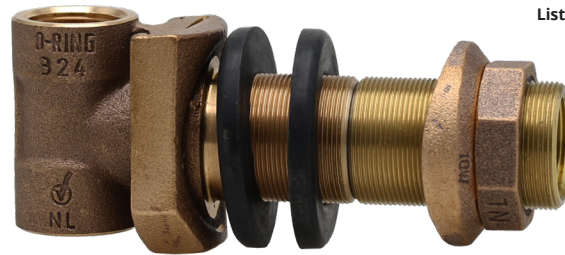
CERTIFICATION:

- NSF/ANSI Standard 372 Certified
- * Water Systems Council listed PAS-97 (2017)



Listed PAS-97 (2017)

MATERIAL LIST	
Name	Materials
Elbow	No Lead Bronze
Slide	No Lead Bronze
O-ring	NBR Rubber
Gaskets	NBR Rubber
Washer	No Lead Bronze
Nut	No Lead Bronze



DIMENSIONS											
Part No.	Drop Pipe Size	Concrete Tile Size Range	Hole Saw Size	Working Load	H		L		W		Weight
	Inches				Inches	Inches	lbs	inches	mm	inches	
PA-100-CTNL	1	12 - 48	1-3/4	2000	2.75	69.85	7.20	182.88	2.95	74.93	1805
PA-125-CTNL	1-1/4	12 - 48	2-1/8	2000	3.15	80.01	7.75	196.85	3.55	90.17	2948



25 Whaley Avenue, PO Box 310, Milverton, ON CANADA N0K 1M0
Tel: 800-561-3164

boshart.com ♦ blog.boshart.com