

INSTALLATION INSTRUCTIONS:

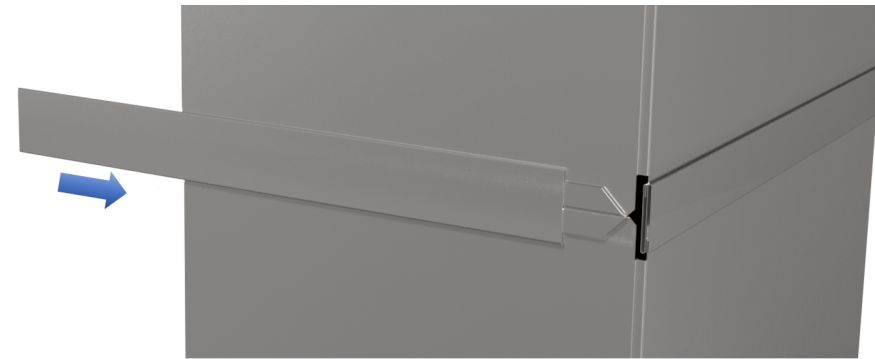
- 1- Slide drive cleat over ducting flanges.
- 2- Push cleat 1" past ducting.
- 3- Cut other end at a 1" overlap with snips.
- 4- Hammer or Bend ends over corners. wide pliers.

NOTE:

Used for residential applications. Drive cleat should be installed after slip or standing cleat. Industrial tape, foil, or sealer can be used.

WARNING!!

Improper installation may result in damage to product or inefficiencies in the system. Use proper PPE and equipment during cutting, bending, and installation processes. If local codes differ from these instructions follow local building codes.



INSTALLATION VIEW



INSTALLATION VIEW 2



INSTALLED VIEW