

## DESCRIPTION

The Tradesman drive cleat is used to join sections of square duct.

## CONSTRUCTION

Made of 24GA to 30A galvanized.

## FEATURES

Made to fit any slip and drive connection of CP joint.

## GUARANTEE

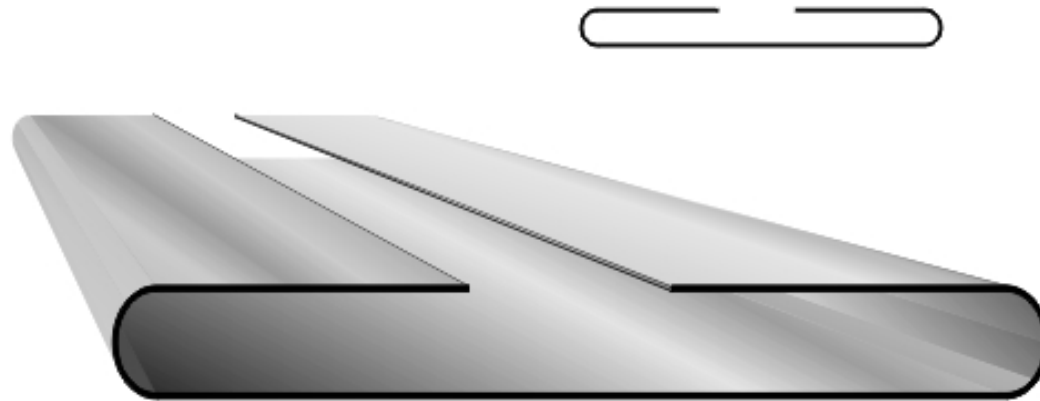
Made in Canada. All Tradesman Manufacturing products are guaranteed against defective material.

## OPTIONAL CONSTRUCTION

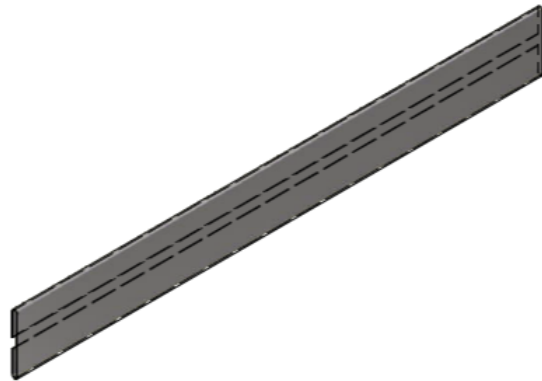
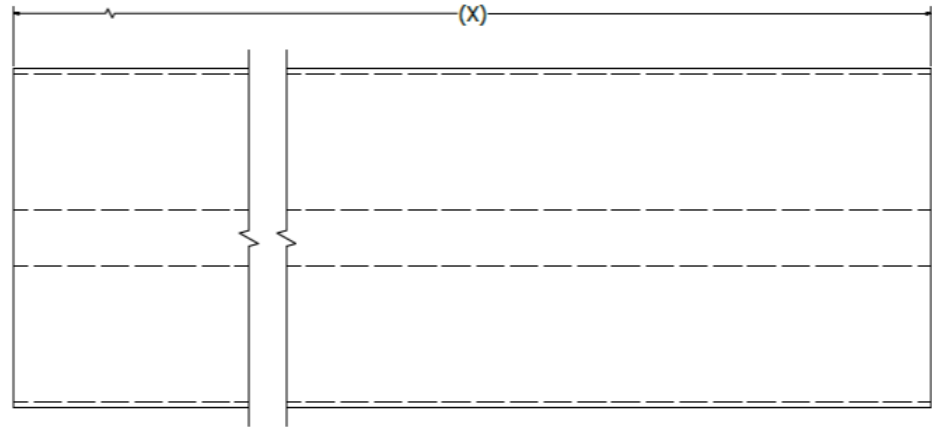
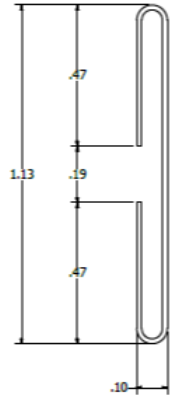
304 Stainless Steel  
316 Stainless Steel  
Aluminum

Product Code	X (in)	Gauge	Carton/Bundle/Skid Qty
DCL/0005/24	60"	24	100'/BDL, 4500'/Skid
DCL/0005/26	60"	26	100'/BDL, 4500'/Skid
DCL/0005/28	60"	28	100'/BDL, 4500'/Skid
DCL/0005/30	60"	30	100'/BDL, 4500'/Skid
DCL/0008/26	96"	26	80'/BDL, 4000'/Skid
DCL/0008/28	96"	28	80'/BDL, 4000'/Skid
DCL/0010/24	120"	24	100'/BDL, 5000'/Skid
DCL/0010/26	120"	26	100'/BDL, 5000'/Skid
DCL/0010/28	120"	28	100'/BDL, 5000'/Skid
DCL/0010/30	10"	30	200/CTN
DCL/0011/30	11"	30	200/CTN
DCL/0012/30	12"	30	200/CTN

CLEAT - DRIVE



# CLEAT - DRIVE



[\(403\) 327-9871](tel:4033279871)

[sales@tradesmanmfg.ca](mailto:sales@tradesmanmfg.ca)

[www.tradesmanmfg.ca](http://www.tradesmanmfg.ca)

Specifications are subject to change without notice or obligation. All Tradesman Manufacturing products are guaranteed against defective material.