

DESCRIPTION

The Tradesman duct is used for heating and air conditioning supply and return air systems.

CONSTRUCTION

Made of 26GA to 30GA galvanized.

FEATURES

Beaded every 12" for added strength.
 Buttonlock seam for quick assembly.
 Stock length is 5'.

GUARANTEE

Made in Canada. All Tradesman Manufacturing products are guaranteed against defective material.

OPTIONAL CONSTRUCTION

Custom sizes and gauges available upon request to suit any and all applications.
 Optional stainless, aluminum, or satin coat.
 1/2" for drive cleat bent upon request.

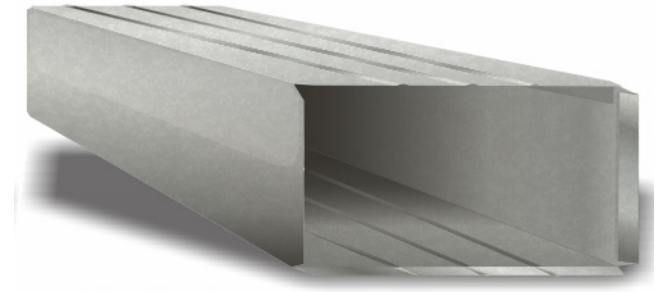
Product Code	Dimension	Length	Skid Qty
DUF/0808/xxBP	8" x 8"	60"	400
DUF/1003/xxBP	10" x 3"	60"	400
DUF/1004/30NB	10" x 4"	60"	400
DUF/1008/xxBP	10" x 8"	60"	400
DUF/1010/xxBP	10" x 10"	60"	400
DUF/1202/30NB	12" x 2.25"	60"	400
DUF/1208/xxBP	12" x 8"	60"	400
DUF/1210/xxBP	12" x 10"	60"	400
DUF/1408/xxBP	14" x 8"	60"	400
DUF/1410/xxBP	14" x 10"	60"	400
DUF/1412/xxBP	14" x 12"	60"	400
DUF/1608/xxBP	16" x 8"	60"	400
DUF/1610/xxBP	16" x 10"	60"	400
DUF/1808/xxBP	18" x 8"	60"	400
DUF/1810/xxBP	18" x 10"	60"	400
DUF/2008/xxBP	20" x 8"	60"	200
DUF/2010/26BP	20" x 10"	60"	200

TRADESMAN

MANUFACTURING

DUCT

Product Code	Dimension	Length	Skid Qty
DUF/2208/26BP	22" x 8"	60"	200
DUF/2210/26BP	22" x 10"	60"	200
DUF/2408/26BP	24" x 8"	60"	200
DUF/2410/26BP	24" x 10"	60"	200
DUF/2412/26BP	24" x 12"	60"	200
DUF/2508/26BP	25" x 8"	60"	200
DUF/2509/26BP	25" x 9.25"	60"	200
DUF/2510/26BP	25" x 10"	60"	200



[\(403\) 327-9871](tel:4033279871)

sales@tradesmanmfg.ca

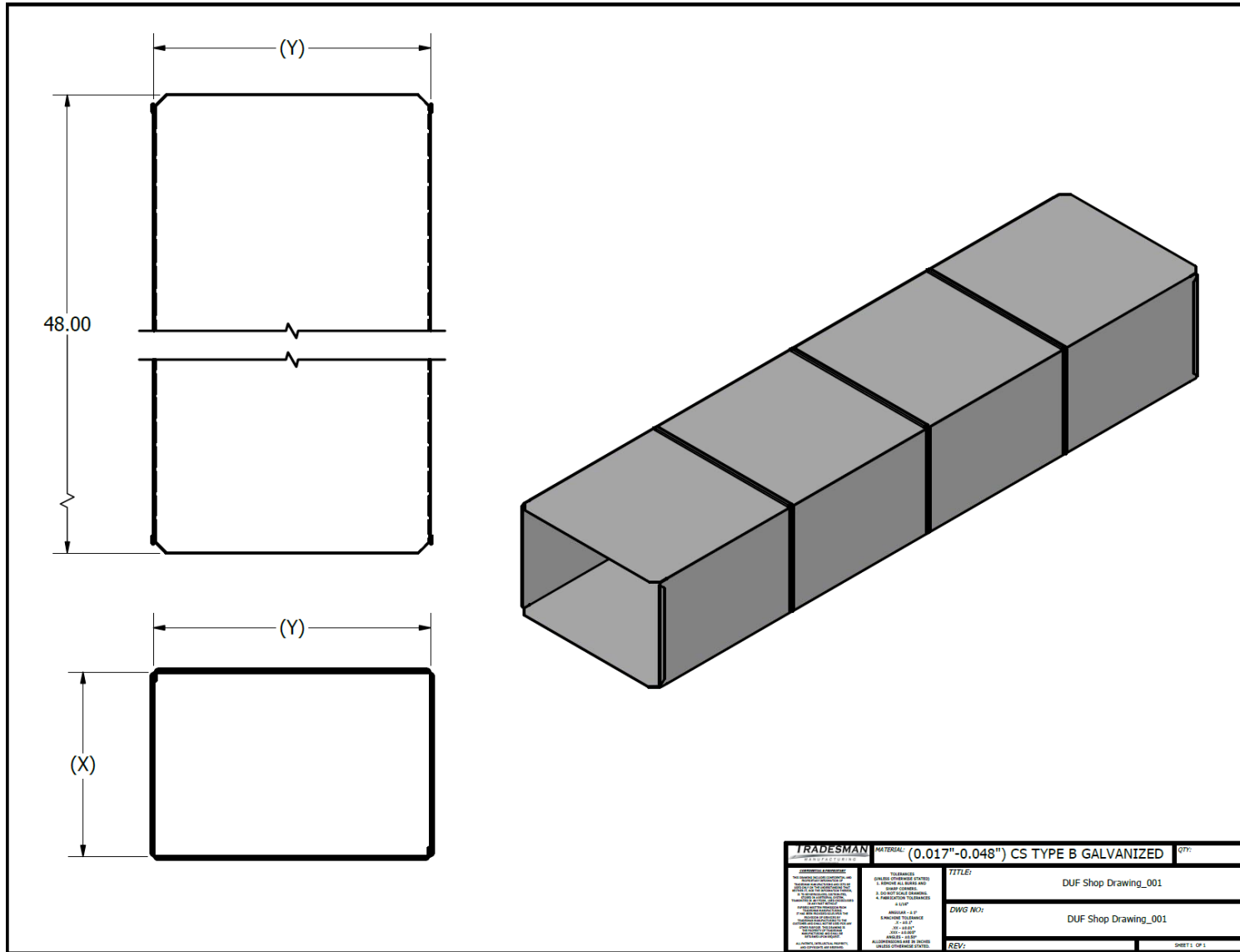
www.tradesmanmfg.ca

Specifications are subject to change without notice or obligation. All Tradesman Manufacturing products are guaranteed against defective material.

DUCT

TRADESMAN

MANUFACTURING



TRADESMAN MANUFACTURING		MATERIAL: (0.017"-0.048") CS TYPE B GALVANIZED	QTY:
<small> GENERAL REQUIREMENTS: THE DRAWING IS TO BE CONSIDERED AS A COMPLETE SET OF DRAWINGS. ALL DIMENSIONS ARE TO BE TAKEN FROM THE UNLESS OTHERWISE SPECIFIED. DIMENSIONS ARE TO BE IN UNLESS OTHERWISE SPECIFIED. ALL DIMENSIONS ARE TO BE IN UNLESS OTHERWISE SPECIFIED. ALL DIMENSIONS ARE TO BE IN UNLESS OTHERWISE SPECIFIED. </small>		TOLERANCES: FRACTIONS OF INCHES LISTED TO BE TO NEAREST 1/16" DECIMALS TO BE TO NEAREST 0.001" ANGLES TO BE TO NEAREST 1/4° UNLESS OTHERWISE SPECIFIED	
		TITLE: DUF Shop Drawing_001	
		DWG No: DUF Shop Drawing_001	
		REV:	SHEET: 01

[\(403\) 327-9871](tel:4033279871)

sales@tradesmanmfg.ca

www.tradesmanmfg.ca

Specifications are subject to change without notice or obligation. All Tradesman Manufacturing products are guaranteed against defective material.