

DESCRIPTION

The Tradesman duct is used for heating and air conditioning supply and return air systems.

CONSTRUCTION

Made of 26GA to 30GA galvanized.

FEATURES

Beaded every 12" for added strength.
Buttonlock seam for quick assembly.
Stock length is 5'.

GUARANTEE

Made in Canada. All Tradesman Manufacturing products are guaranteed against defective material.

OPTIONAL CONSTRUCTION

Custom sizes and gauges available upon request to suit any and all applications.

Optional stainless, aluminum, or satin coat.
½" for drive cleat bent upon request.

Contact Tradesman Manufacturing for availability, pricing, and lead time.

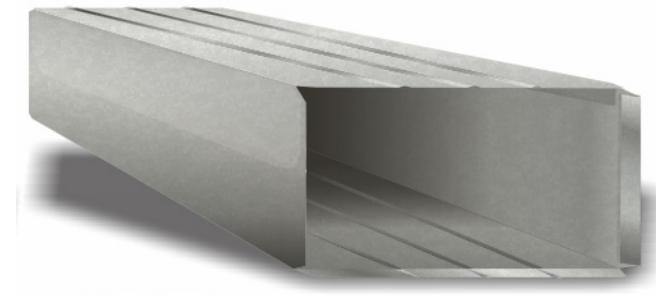
Product Code	Dimension	Length	Skid Qty
DUF/0808/xxBP	8" x 8"	60"	400
DUF/1003/xxBP	10" x 3"	60"	400
DUF/1004/30NB	10" x 4"	60"	400
DUF/1008/xxBP	10" x 8"	60"	400
DUF/1010/xxBP	10" x 10"	60"	400
DUF/1202/30NB	12" x 2.25"	60"	400
DUF/1208/xxBP	12" x 8"	60"	400
DUF/1210/xxBP	12" x 10"	60"	400
DUF/1408/xxBP	14" x 8"	60"	400
DUF/1410/xxBP	14" x 10"	60"	400
DUF/1412/xxBP	14" x 12"	60"	400
DUF/1608/xxBP	16" x 8"	60"	400
DUF/1610/xxBP	16" x 10"	60"	400
DUF/1808/xxBP	18" x 8"	60"	400
DUF/1810/xxBP	18" x 10"	60"	400
DUF/2008/xxBP	20" x 8"	60"	200
DUF/2010/26BP	20" x 10"	60"	200

TRADESMAN

MANUFACTURING

DUCT

Product Code	Dimension	Length	Skid Qty
DUF/2208/26BP	22" x 8"	60"	200
DUF/2210/26BP	22" x 10"	60"	200
DUF/2408/26BP	24" x 8"	60"	200
DUF/2410/26BP	24" x 10"	60"	200
DUF/2412/26BP	24" x 12"	60"	200
DUF/2508/26BP	25" x 8"	60"	200
DUF/2509/26BP	25" x 9.25"	60"	200
DUF/2510/26BP	25" x 10"	60"	200



[\(403\) 327-9871](tel:4033279871)

sales@tradesmanmfg.ca

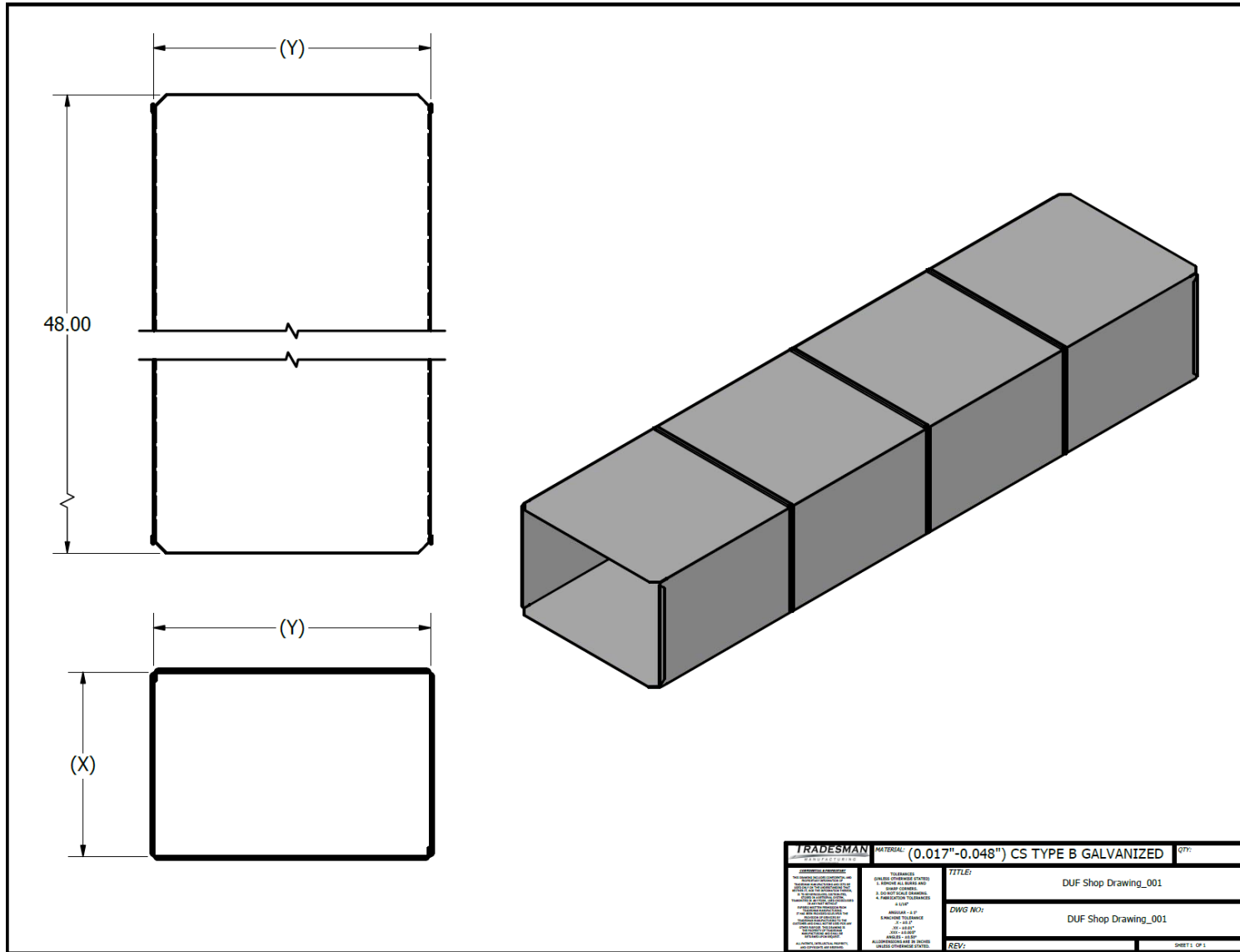
www.tradesmanmfg.ca

Specifications are subject to change without notice or obligation. All Tradesman Manufacturing products are guaranteed against defective material.

DUCT

TRADESMAN

MANUFACTURING



TRADESMAN MANUFACTURING	MATERIAL: (0.017"-0.048") CS TYPE B GALVANIZED	QTY:
<small>GENERAL NOTES: 1. TRADESMAN MANUFACTURING, INC. 2. ALL DIMENSIONS UNLESS OTHERWISE SPECIFIED ARE IN INCHES. 3. DIMENSIONS TO CENTER UNLESS OTHERWISE SPECIFIED. 4. FINISHES TO BE AS SHOWN. 5. ALL DIMENSIONS ARE TO BE MAINTAINED THROUGHOUT THE ENTIRE LENGTH OF THE PART. 6. ALL DIMENSIONS ARE TO BE MAINTAINED THROUGHOUT THE ENTIRE LENGTH OF THE PART.</small>	<small>TOLERANCES: DIMENSIONS TO BE MAINTAINED THROUGHOUT THE ENTIRE LENGTH OF THE PART. DIMENSIONS TO BE MAINTAINED THROUGHOUT THE ENTIRE LENGTH OF THE PART. DIMENSIONS TO BE MAINTAINED THROUGHOUT THE ENTIRE LENGTH OF THE PART.</small>	TITLE: DUF Shop Drawing_001
		DWG No: DUF Shop Drawing_001
		REV: SHEET: 01

(403) 327-9871

sales@tradesmanmfg.ca

www.tradesmanmfg.ca

Specifications are subject to change without notice or obligation. All Tradesman Manufacturing products are guaranteed against defective material.