

### INSTALLATION INSTRUCTIONS:

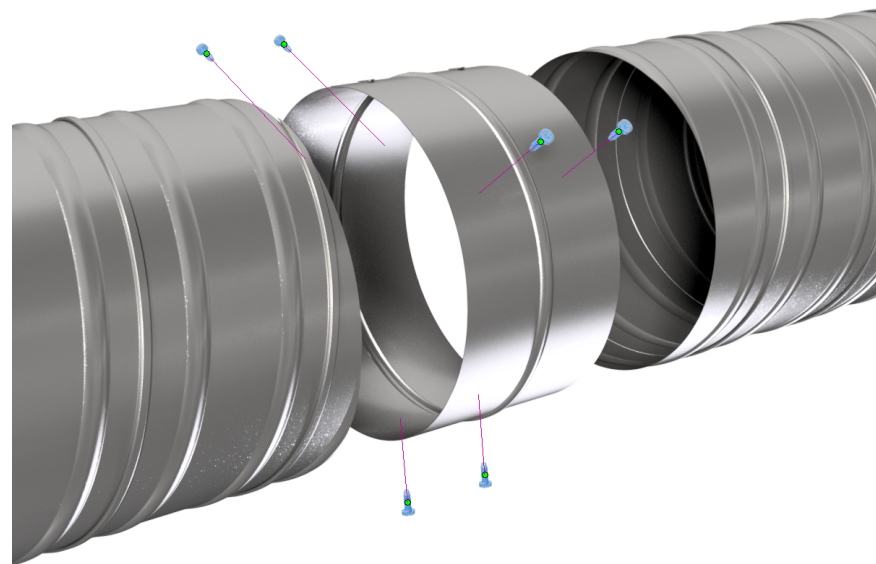
- 1- Slide collar into pipe until tight.
- 2- Use three 1/2" sheet metal screws evenly spaced to secure collar to pipe.
- 3- Slide next pipe over collar until tight. Hand crimp may be needed.
- 4- Use three 1/2" sheet metal screws to secure pipe to collar.

#### **NOTE:**

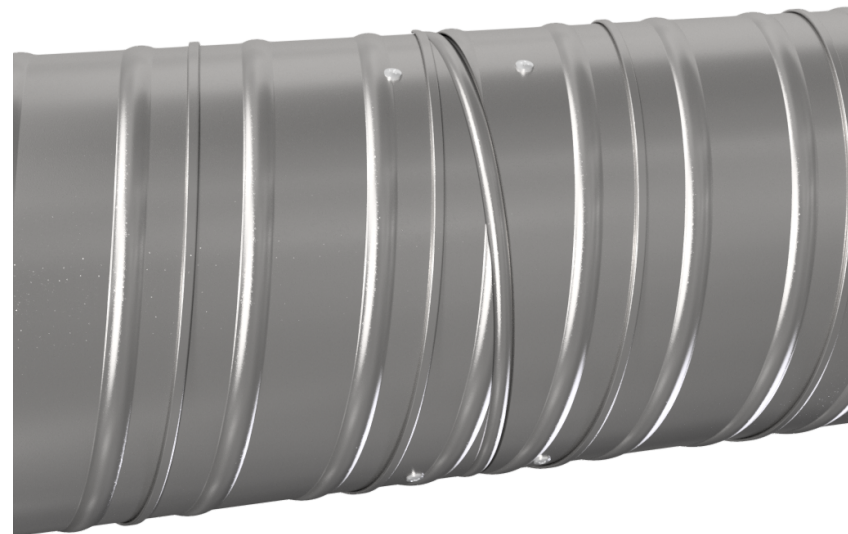
Used for commercial applications, use sealer on all connection points. It is easier to add the collar to the pipe on the ground first. Pipe must be supported by cable every 5'.

#### ***WARNING!!***

*Improper installation may result in damage to product or inefficiencies in the system. Use proper PPE and equipment during cutting, bending, and installation processes. If local codes differ from these instructions follow local building codes.*



**INSTALLATION VIEW**



**INSTALLED VIEW**