



CHICAGO FAUCETS 4112.9R1M

Food Service

CHICAGO FAUCETS 

Geberit Group



Products for Your Most Demanding Applications

Restaurants need **dependable, durable faucets**. From the **front of the house to the back of the house**, each area has **unique requirements**. As the **leading commercial faucet brand**, we understand those requirements. Our unsurpassed quality and dependability **frees you up to focus on your business**.



Product Quality — For over 110 years, we've set the mark for quality, backed up by **the industry's strongest warranties**.

Comprehensive Offering — We offer thousands of faucets. See them all or **design your own faucet** on our website.

Conservation & Sustainability — Choose from a wide selection of faucets designed to **reduce water consumption**.

Flexibility & Expandability — Allows you to **upgrade and change components** easily and affordably.

Made in the USA — **Over 95%** of our products meet the requirements of the **Buy American Act**.

Product Availability — Our most popular products are available from your local distributor or for quick shipment, in many cases within **24 hours**.

See page 32 for shipping details.





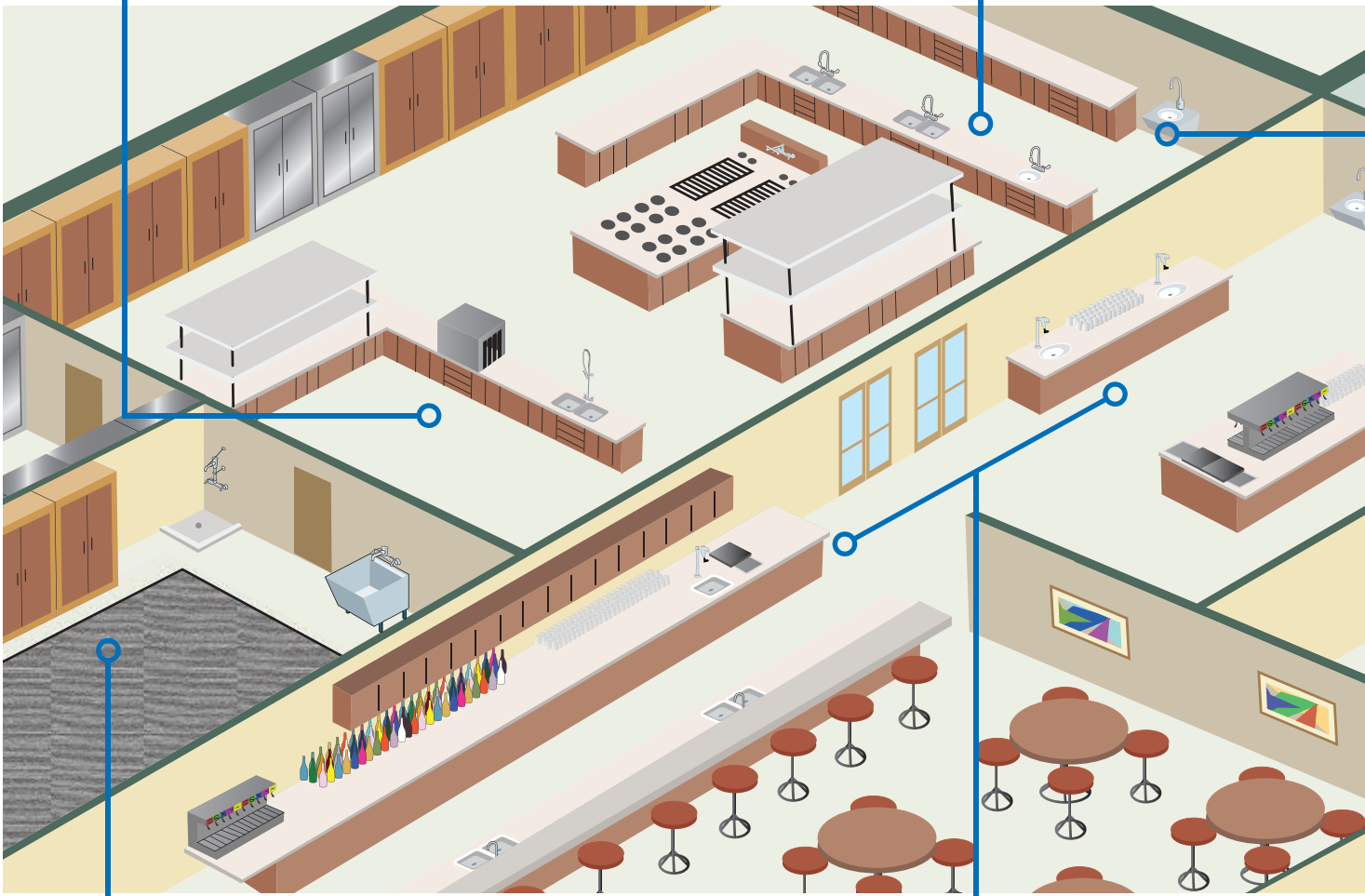
Dish Room

We offer a wide selection of water-conserving, high-performance pre-rinse faucets that reduce utility bills and improve productivity.



Food Prep Areas

Choose from a wide array of durable and sink faucets to match any kitchen.



Janitorial & Maintenance

Our durable service sink faucets feature integral vacuum breakers, pail hooks, hose threaded outlets, and wall brackets.



Bar & Server Stations

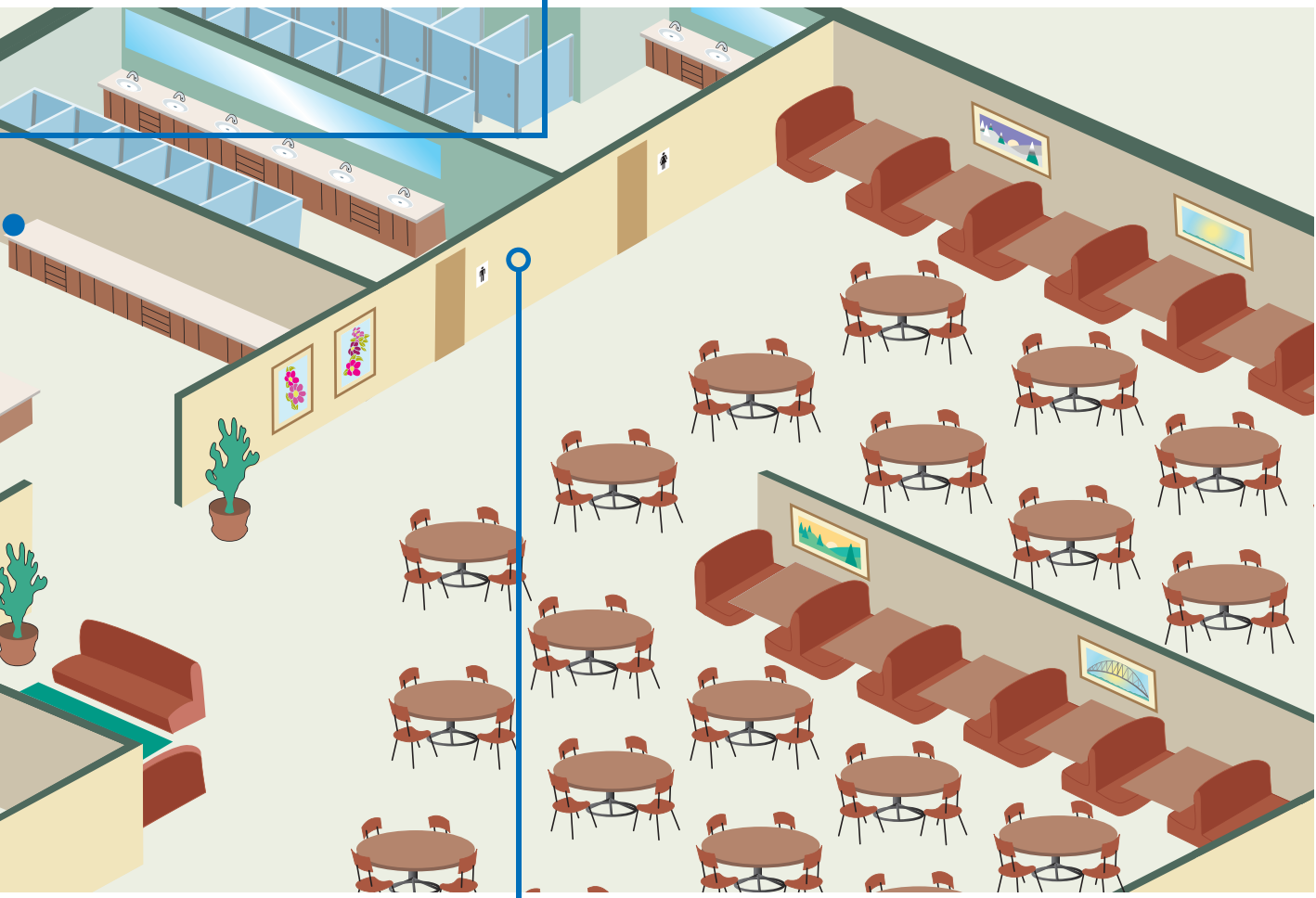
Chicago Faucets offers an array of beverage fillers and sink faucets to help support your business.

le and reliable workboard
en layout and budget.



Hand Wash & Safety Products

Chicago Faucets offers innovative products designed to improve hygiene and add safeguards in food preparation areas.



affordable, dependable glass
ort your wait staff.



Restrooms

From advanced electronics to time-tested metering faucets, we offer stylish solutions for modern and traditional lavatory designs.



Leading The Way To New Standards

ECAST®

Multiple states have implemented **laws regarding lead content** in plumbing products. In 2014, a **nationwide lead law** will take effect. Once again, Chicago Faucets is leading the way.

ECAST® is our line of brass products with **one quarter of one percent** (0.25%) or less total lead content by weighted average. We **control the entire manufacturing process**, including casting, ensuring that every ECAST fitting we produce meets low-lead requirements. All Chicago Faucets products are **certified by an ANSI-approved**, third-party testing facility.

Water Conservation

Chicago Faucets is committed to saving water. California's Green Building Standards Code (CALGreen) sets a new standard for water conservation, requiring an overall reduction of potable water consumption by at least 20%. Once again, Chicago Faucets is leading the way on this initiative:

- Choose from over 200 standard products
- Low flow rates from .35 to 1.5 GPM
- All CALGreen compliant products are from our ECAST® line



ECAST®

New!

An Easy, Integrated Solution for Cross-Flow Prevention

Ceramic cartridge with integrated check valve for food service, janitorial, and low-flow faucets.



Discover
even more options at
chicagofaucets.com

Don't see the exact faucet you're looking for? Visit our website for hundreds of other faucets or build your own with our online configurator.

New and Better Options for Food Service

At Chicago Faucets, we are committed to developing new products and improving our existing lines to help support your restaurant business. Here are some recent additions to the Chicago Faucets product family.



Metering Lavatory Faucets

Adjustable cycle times to save water and user temperature control for convenience.



Glass Fillers

A whole new level of durability, reliability, and convenience for your restaurant.



Low Flow Pre-Rinse Sprays

Ultra-high performance, durability, and lower energy and water costs.



Workboard Faucets

64 new faucets designed for durability with a new level of affordability.



640 Series

Easy serviceability of cartridges with the integration of accessible stop assemblies.



HyTronic® Electronic Faucets

Improve hygiene with a stylish, high-tech solution for restrooms and hand sinks.



Deck Mount Workboard Faucets

An affordable, durable, and dependable solution for the heart of your kitchen.

32 deck mount options with a choice of full-flow or water conserving 1.5 GPM flow outlets – plus a wide choice of spout and handle options to meet your exact needs.



ECAST®

4" Centers

With 6-1/4" Double Bend Spout

Model	Outlet	Handle
W4D-DB6E1-317ABCP	Full Flow	4" Wristblade
W4D-DB6E1-369ABCP	Full Flow	2-3/8" Lever
W4D-DB6AE35-317AB	1.5 GPM	4" Wristblade
W4D-DB6AE35-369AB	1.5 GPM	2-3/8" Lever



W4D-DB6E1-317ABCP



W4D-DB6E35-369AB



W4D-L9E1-369AB



W4D-L9E1-317ABCP

With 9-1/2" Swing Spout

Model	Outlet	Handle
W4D-L9E1-317ABCP*	Full Flow	4" Wristblade
W4D-L9E1-369AB*	Full Flow	2-3/8" Lever
W4D-L9E35-317ABCP*	1.5 GPM	4" Wristblade
W4D-L9E35-369AB*	1.5 GPM	2-3/8" Lever



W4D-GN1AE1-317ABCP



W4D-GN1AE1-369ABCP

With 3-1/2" Gooseneck Spout

Model	Outlet	Handle
W4D-GN1AE1-317ABCP	Full Flow	4" Wristblade
W4D-GN1AE1-369ABCP	Full Flow	2-3/8" Lever
W4D-GN1AE35-317AB	1.5 GPM	4" Wristblade
W4D-GN1AE35-369AB	1.5 GPM	2-3/8" Lever



W4D-GN2AE1-369ABCP



W4D-GN2AE35-317AB

With 5-1/4" Gooseneck Spout

Model	Outlet	Handle
W4D-GN2AE1-317ABCP	Full Flow	4" Wristblade
W4D-GN2AE1-369ABCP*	Full Flow	2-3/8" Lever
W4D-GN2AE35-317AB	1.5 GPM	4" Wristblade
W4D-GN2AE35-369AB*	1.5 GPM	2-3/8" Lever



W4D-LES317AB



W4D-LES369AB

Less Spout

Model	Outlet	Handle
W4D-LES317AB	–	4" Wristblade
W4D-LES369AB	–	2-3/8" Lever

- Designed with 1/2" x 1" NSPM shanks for fast and easy installation on stainless steel sinks and bases
- Durable metal faucet construction with a chrome plated finish for installations on 4" or 8" centers

- Cartridges feature precision ground, high polished ceramic discs for long term, consistent performance
- Interchangeability – spouts, outlets, cartridges, and handles easily updated with other Chicago Faucets components



8" Centers

With 6-1/4" Double Bend Spout

Model	Outlet	Handle
W8D-DB6AE1-317ABCP	Full Flow	4" Wristblade
W8D-DB6AE1-369ABCP	Full Flow	2-3/8" Lever
W8D-DB6AE35-317AB	1.5 GPM	4" Wristblade
W8D-DB6AE35-369AB	1.5 GPM	2-3/8" Lever



With 9-1/2" Swing Spout

Model	Outlet	Handle
W8D-L9E1-317ABCP	Full Flow	4" Wristblade
W8D-L9E1-369ABCP*	Full Flow	2-3/8" Lever
W8D-L9E35-317ABCP	1.5 GPM	4" Wristblade
W8D-L9E35-369ABCP*	1.5 GPM	2-3/8" Lever



With 3-1/2" Gooseneck Spout

Model	Outlet	Handle
W8D-GN1AE1-317ABCP	Full Flow Outlet	4" Wristblade
W8D-GN1AE1-369ABCP	Full Flow Outlet	2-3/8" Lever
W8D-GN1AE35-317AB	1.5 GPM Outlet	4" Wristblade
W8D-GN1AE35-369AB	1.5 GPM Outlet	2-3/8" Lever



With 5-1/4" Gooseneck Spout

Model	Outlet	Handle
W8D-GN2AE1-317ABCP	Full Flow	4" Wristblade
W8D-GN2AE1-369ABCP	Full Flow	2-3/8" Lever
W8D-GN2AE35-317AB	1.5 GPM	4" Wristblade
W8D-GN2AE35-369AB	1.5 GPM	2-3/8" Lever



Less Spout

Model	Outlet	Handle
W8D-LES317AB	-	4" Wristblade
W8D-LES369AB	-	2-3/8" Lever



Wall Mount Workboard Faucets

An affordable, durable, and dependable solution for the heart of your kitchen.

32 wall mount options with a choice of full-flow or water conserving 1.5 GPM flow outlets – with a wide choice of spout and handle options to meet your exact needs.



ECAST[®]

4" Centers

With 6-1/4" Double Bend Spout

Model	Outlet	Handle
W4W-DB6AE1-317ABCP	Full Flow	4" Wristblade
W4W-DB6AE1-369ABCP	Full Flow	2-3/8" Lever
W4W-DB6AE35-317AB	1.5 GPM	4" Wristblade
W4W-DB6AE35-369AB	1.5 GPM	2-3/8" Lever



W4W-DB6E1-317ABCP



W4W-DB6E35-369AB



W4W-L9E1-369ABCP



W4W-L9E35-317ABCP



W4W-GN1AE35-369AB



W4W-GN1AE1-317ABCP



W4W-GN2AE1-369ABCP



W4W-GN2AE35-317AB



W4W-LES369AB



W4W-LES317AB

With 9-1/2" Swing Spout

Model	Outlet	Handle
W4W-L9E1-317ABCP*	Full Flow	4" Wristblade
W4W-L9E1-369AB*	Full Flow	2-3/8" Lever
W4W-L9E35-317ABCP*	1.5 GPM	4" Wristblade
W4W-L9E35-369ABCP*	1.5 GPM	2-3/8" Lever

With 3-1/2" Gooseneck Spout

Model	Outlet	Handle
W4W-GN1AE1-317ABCP	Full Flow	4" Wristblade
W4W-GN1AE1-369ABCP	Full Flow	2-3/8" Lever
W4W-GN1AE35-317AB	1.5 GPM	4" Wristblade
W4W-GN1AE35-369AB	1.5 GPM	2-3/8" Lever

With 5-1/4" Gooseneck Spout

Model	Outlet	Handle
W4W-GN2AE1-317ABCP	Full Flow	4" Wristblade
W4W-GN2AE1-369ABCP*	Full Flow	2-3/8" Lever
W4W-GN2AE35-317AB	1.5 GPM	4" Wristblade
W4W-G2E35-369AB*	1.5 GPM	2-3/8" Lever

Less Spout

Model	Outlet	Handle
W4W-LES317AB	-	4" Wristblade
W4W-LES369AB	-	2-3/8" Lever

- Designed with 1/2" x 1" NSPM shanks for fast and easy stainless steel backsplash installation with optional 90° supply elbow for additional installation convenience
- Durable metal faucet construction with a chrome plated finish for installations on 4" or 8" centers

- Cartridges feature precision ground, high polished ceramic discs for long term, consistent performance
- Interchangeability – spouts, outlets, cartridges, and handles easily updated with other Chicago Faucets components



8" Centers

With 6-1/4" Double Bend Spout

Model	Outlet	Handle
W8W-DB6AE1-317ABCP	Full Flow	4" Wristblade
W8W-DB6AE1-369ABCP	Full Flow	2-3/8" Lever
W8W-DB6AE35-317AB	1.5 GPM	4" Wristblade
W8W-DB6AE35-369AB	1.5 GPM	2-3/8" Lever

With 9-1/2" Swing Spout

Model	Outlet	Handle
W8W-L9E1-317ABCP	Full Flow	4" Wristblade
W8W-L9E1-369ABCP*	Full Flow	2-3/8" Lever
W8W-L9E35-317ABCP	1.5 GPM	4" Wristblade
W8W-L9E35-369ABCP*	1.5 GPM	2-3/8" Lever

With 3-1/2" Gooseneck Spout

Model	Outlet	Handle
W8W-GN1AE1-317ABCP	Full Flow	4" Wristblade
W8W-GN1AE1-369ABCP	Full Flow	2-3/8" Lever
W8W-GN1AE35-317AB	1.5 GPM	4" Wristblade
W8W-GN1AE35-369AB	1.5 GPM	2-3/8" Lever

With 5-1/4" Gooseneck Spout

Model	Outlet	Handle
W8W-GN2AE1-317ABCP	Full Flow	4" Wristblade
W8W-GN2AE1-369ABCP	Full Flow	2-3/8" Lever
W8W-GN2AE35-317AB	1.5 GPM	4" Wristblade
W8W-GN2AE35-369AB	1.5 GPM	2-3/8" Lever

Less Spout

Model	Outlet	Handle
W8W-LES317AB	-	4" Wristblade
W8W-LES369AB	-	2-3/8" Lever



Deck Mount Sink Faucets

The iconic design is supported by durable solid brass construction, our time-tested Quatum™ cartridge, and the industry's widest selection of spouts, outlets, and handles.



ECAST®

Single Hole Deck Faucet, Two Handles



Model	Spout	Outlet	Handle
50-DJ21ABCP	21" Double Jointed	Full Flow	2-3/8" Lever
50-DJ24ABCP	24" Double Jointed	Full Flow	2-3/8" Lever
50-DJ26ABCP	26" Double Jointed	Full Flow	2-3/8" Lever



Single Hole Deck Faucet, Single Handle

Model	Spout	Outlet	Handle
350-DJ21ABCP	21" Double Jointed	Full Flow	2-3/8" Lever
350-DJ24ABCP	24" Double Jointed	Full Flow	2-3/8" Lever
350-DJ26ABCP	26" Double Jointed	Full Flow	2-3/8" Lever

- Solid, one-piece, cast brass body for maximum strength and stability
- Fewer parts and pre-assembled components for a one-person installation

- Interchangeability — spouts, outlets, cartridges, and handles easily updated with other Chicago Faucets components



Concealed Faucet With Side Spray, 8" Centers

Model	Spout	Outlet	Handle
200-AE35-317ABCP	9-1/2" Swing	1.5 GPM	4" Wristblade
200-AE35ABCP	9-1/2" Swing	1.5 GPM	2-3/8" Lever
200-AGN8AE35-317AB	8" Gooseneck	1.5 GPM	4" Wristblade
200-AL8E35-317ABCP	8" Swing	1.5 GPM	4" Wristblade
200-AL8E35ABCP	8" Swing	1.5 GPM	2-3/8" Lever



Concealed Faucet, 8" Centers

Model	Spout	Outlet	Handle
201-AE35-317ABCP	9-1/2" Swing	1.5 GPM	4" Wristblade
201-AE35ABCP	9-1/2" Swing	1.5 GPM	2-3/8" Lever
201-AGN8AE35-319AB	8" Gooseneck	1.5 GPM	6" Wristblade
201-AGN8AE35ABCP	8" Gooseneck	1.5 GPM	2-3/8" Lever
201-AHA8AE35ABCP	8" High Arch	1.5 GPM	2-3/8" Lever
786-GN1AE35ABCP	3-1/2" Gooseneck	1.5 GPM	4" Wristblade
786-E35-319ABCP	5-1/4" Gooseneck	1.5 GPM	6" Wristblade
786-E35-369ABCP	5-1/4" Gooseneck	1.5 GPM	2-3/8" Lever
786-E35ABCP	5-1/4" Gooseneck	1.5 GPM	4" Wristblade



Exposed Deck Faucet, 8" Centers

Model	Spout	Outlet	Handle
527-ABCP	6-1/4" Double Bend	Full Flow	2-3/8" Lever
527-XKABCP	6-1/4" Double Bend	Full Flow	2-3/8" Lever
1100-E35-317ABCP	8" Swing	1.5 GPM	4" Wristblade
1100-GN8AE35-317AB	8" Gooseneck	1.5 GPM	4" Wristblade



Single Control Faucet, 8" Centers

Model	Spout	Outlet	Handle
431-ABCP*	9-1/2" Integral	1.5 GPM	Single Lever
432-ABCP*	9-1/2" Integral	1.5 GPM	Single Lever



Wall Mount Sink Faucets

Added versatility and additional counter space with solid brass construction, our Quatum™ cartridge, and the industry's widest selection of spouts, outlets, and handles.



ECAST®



445-DJ13E35ABCP



445-E1ABCP



445-L9E1ABCP



445-DJ21ABCP



521-GN2AE1ABCP

Model	Spout	Outlet	Handle
445-ABCP	6" Swing	2.2 GPM	2-3/8" Lever
445-DJ13ABCP	13" Double Jointed	2.2 GPM	2-3/8" Lever
445-DJ13E35ABCP	13" Double Jointed	1.5 GPM	2-3/8" Lever
445-DJ13E1ABCP	13" Double Jointed	Full Flow	2-3/8" Lever
445-DJ18ABCP	18" Double Jointed	2.2 GPM	2-3/8" Lever
445-DJ18E35ABCP	18" Double Jointed	1.5 GPM	2-3/8" Lever
445-DJ21ABCP	21" Double Jointed	Full Flow	2-3/8" Lever
445-DJ24ABCP	24" Double Jointed	Full Flow	2-3/8" Lever
445-DJ26ABCP	26" Double Jointed	Full Flow	2-3/8" Lever
445-E1ABCP	6" Swing	Full Flow	2-3/8" Lever
445-E35ABCP	6" Swing	1.5 GPM	2-3/8" Lever
445-HCABCP	6" Swing	2.2 GPM	2-3/8" Lever
445-L8ABCP*	8" Swing	2.2 GPM	2-3/8" Lever
445-L8E35ABCP	8" Swing	1.5 GPM	2-3/8" Lever
445-L9ABCP	9-1/2" Swing	2.2 GPM	2-3/8" Lever
445-L9E1ABCP	9-1/2" Swing	Full Flow	2-3/8" Lever
445-L9E35ABCP	9-1/2" Swing	1.5 GPM	2-3/8" Lever
445-L12ABCP*	12" Swing	2.2 GPM	2-3/8" Lever
445-L12E1ABCP	12" Swing	Full Flow	2-3/8" Lever
445-L12E35ABCP	12" Swing	1.5 GPM	2-3/8" Lever
445-L15E35ABCP	15" Swing	1.5 GPM	2-3/8" Lever
521-ABCP	6-1/4" Double Bend	Full Flow	2-3/8" Lever
521-GN2AE1ABCP	5-1/4" Gooseneck	Full Flow	2-3/8" Lever
521-GN2AE3ABCP	5-1/4" Gooseneck	2.2 GPM	2-3/8" Lever

- Solid cast brass construction for maximum strength and stability
- Available with adjustable inlet arms for added installation flexibility

- Interchangeability — spouts, outlets, cartridges, and handles easily updated with other Chicago Faucets components



Model	Spout	Outlet	Handle
540-LDDJ21ABCP	21" Double Jointed	Full Flow	2-3/8" Lever
540-LDDJ24ABCP	24" Double Jointed	Full Flow	2-3/8" Lever
540-LDDJ26ABCP	26" Double Jointed	Full Flow	2-3/8" Lever
540-LDABCP	9-1/2" Swing	2.2 GPM	2-3/8" Lever
540-LDE35ABCP	6" Swing	1.5 GPM	2-3/8" Lever
540-LDGN8AE3ABCP	8" Gooseneck	2.2 GPM	2-3/8" Lever
540-LDL8E1ABCP	8" Swing	Full Flow	2-3/8" Lever
540-LDL8E35ABCP	8" Swing	1.5 GPM	2-3/8" Lever
540-LDL8ABCP	8" Swing	2.2 GPM	2-3/8" Lever
540-LDL9ABCP	9-1/2" Swing	2.2 GPM	2-3/8" Lever
540-LDL9E1ABCP	9-1/2" Swing	Full Flow	2-3/8" Lever
540-LDL9E35ABCP	9-1/2" Swing	1.5 GPM	2-3/8" Lever
540-LDL9HFAB	9-1/2" Swing	Full Flow	2-3/8" Lever
540-LDL12HFAB	12" Swing	Full Flow	2-3/8" Lever
540-LDL12ABCP	12" Swing	2.2 GPM	2-3/8" Lever
540-LDL12E1WXFABCP	12" Swing	Full Flow	2-3/8" Lever
540-LDL12E35ABCP	12" Swing	1.5 GPM	2-3/8" Lever
540-LDL15ABCP	14" Swing	2.2 GPM	2-3/8" Lever
540-LDXKABCP	6" Swing	2.2 GPM	2-3/8" Lever
631-ABCP	3-1/2" Gooseneck	1.5 GPM	4" Wristblade
631-E35ABCP	3-1/2" Gooseneck	1.5 GPM	4" Wristblade
631-GN8AE3ABCP	8" Gooseneck	2.2 GPM	4" Wristblade
631-RABCP	3-1/2" Gooseneck	2.2 GPM	4" Wristblade



New! Wall Mount Sink Faucets

Introducing a wall-mounted kitchen faucet with hot and cold water supply stops built into the faucet body. Stops open and close with a standard screwdriver for fast service and minimal downtime.

- Integrated stops mean there's no need to turn off main water for point-of-use service
- Hassle-free installation with adjustable arms for 6-1/4" to 9-3/4" centers
- Modular body accepts a wide range of standard Chicago Faucets components



ECAST®



640-GN1AE35-369YAB



640-L8E1-317YAB



640-L9E35-369YAB



640-L12E1-317YAB



640-S6E35-369YAB

Model	Spout	Outlet	Handle
640-GN1AE1-317YAB	3-1/2" Gooseneck	Full Flow	4" Wristblade
640-GN1AE35-317YAB	3-1/2" Gooseneck	1.5 GPM	4" Wristblade
640-GN1AE1-369YAB	3-1/2" Gooseneck	Full Flow	2-3/8" Lever
640-GN1AE35-369YAB	3-1/2" Gooseneck	1.5 GPM	2-3/8" Lever
640-L8E1-317YAB	8" Swing	Full Flow	4" Wristblade
640-L8E35-317YAB	8" Swing	1.5 GPM	4" Wristblade
640-L8E1-369YAB	8" Swing	Full Flow	2-3/8" Lever
640-L8E35-369YAB	8" Swing	1.5 GPM	2-3/8" Lever
640-L9E1-317YAB	9-1/2" Swing	Full Flow	4" Wristblade
640-L9E35-317YAB	9-1/2" Swing	1.5 GPM	4" Wristblade
640-L9E1-369YAB	9-1/2" Swing	Full Flow	2-3/8" Lever
640-L9E35-369YAB	9-1/2" Swing	1.5 GPM	2-3/8" Lever
640-L12E1-317YAB	12" Swing	Full Flow	4" Wristblade
640-L12E35-317YAB	12" Swing	1.5 GPM	4" Wristblade
640-L12E1-369YAB	12" Swing	Full Flow	2-3/8" Lever
640-L12E35-369YAB	12" Swing	1.5 GPM	2-3/8" Lever
640-S6E1-317YAB	6" Swing	Full Flow	4" Wristblade
640-S6E35-317YAB	6" Swing	1.5 GPM	4" Wristblade
640-S6E1-369YAB	6" Swing	Full Flow	2-3/8" Lever
640-S6E35-369YAB	6" Swing	1.5 GPM	2-3/8" Lever
640-LES317YAB	-	-	4" Wristblade
640-LES369YAB	-	-	2-3/8" Lever



Bar & Pantry Faucets

Our bar and pantry faucets feature a choice of spout and handle options for just about any installation requirement with solid brass construction, and our Quatum™ cartridge.

- Solid cast brass construction for maximum strength and stability
- Available with a choice of single or dual supply configurations for added flexibility
- Interchangeability – easily updated with other spouts, outlets, cartridges, and handles



Bar and Server Stations



Food Prep Areas



Hand Wash

ECAST®



50-E35-317XKABCP



51-E35ABCP



350-E35-317XKABCP



350-DB6AE35ABCP



895-317GN8AE35ABCP



895-L12E35ABCP



772-E35ABCP

Single Hole, Dual Supply

Model	Spout	Outlet	Handle
50-E35-317XKABCP	5-1/4" Gooseneck	1.5 GPM	4" Wristblade
50-E35ABCP	5-1/4" Gooseneck	1.5 GPM	2-3/8" Lever
50-GN8AE35ABCP	8" Gooseneck	1.5 GPM	2-3/8" Lever
51-E35ABCP	6" Swing	1.5 GPM	2-3/8" Lever

Single Hole, Single Supply

Model	Spout	Outlet	Handle
349-E35ABCP	6" Swing	1.5 GPM	2-3/8" Lever
350-DB6AE35ABCP	6-1/4" Double Bend	1.5 GPM	2-3/8" Lever
350-E35-317XKABCP	5-1/4" Gooseneck	1.5 GPM	4" Wristblade
350-E35ABCP	5-1/4" Gooseneck	1.5 GPM	2-3/8" Lever
350-GN8AE35ABCP	8" Gooseneck	1.5 GPM	2-3/8" Lever

4" Centers, Dual Supply

Model	Spout	Outlet	Handle
526-ABCP	6-1/4" Double Bend	Full Flow	2-3/8" Lever
526-317ABCP	6-1/4" Double Bend	Full Flow	4" Wristblade
526-E3-317ABCP	6-1/4" Double Bend	2.2 GPM	4" Wristblade
526-GN2AE1ABCP	5-1/4" Gooseneck	Full Flow	2-3/8" Lever
895-317GN8AE35ABCP	8" Gooseneck	1.5 GPM	4" Wristblade
895-L12E35ABCP	12" Swing	1.5 GPM	2-3/8" Lever
1895-E35ABCP	3-1/2" Gooseneck	1.5 GPM	2" Single Wing

3-3/8" Centers, Dual Supply

Model	Spout	Outlet	Handle
772-E35ABCP	6" Swing	1.5 GPM	2-3/8" Lever



Pedal Valve Faucets

These faucets allow you to keep your hands free for food preparation with convenient foot pedal operation. The self-closing design of these products also helps conserve water.

- Solid cast brass construction for maximum strength and stability
- Available with a choice of single or dual supply configurations for added flexibility
- Low-flow outlets combined with pedal operation increase water conservation

 Food Prep Areas

 Hand Wash

ECAST®



626-E35ABCP



626-GN8AE35ABCP

Remote Spouts

Model	Mount	Spout	Outlet
513-ABCP	Deck	21" Double Jointed	Full Flow
626-E35ABCP	Deck	5-1/4" Gooseneck	1.5 GPM
626-GN8AE35ABCP	Deck	8" Gooseneck	1.5 GPM
629-E35ABCP	Wall	5-1/4" Gooseneck	1.5 GPM



625-ABCP



628-ABCP



625-LPABCP

Pedal Valves

Model	Description
625-ABCP*	Hot and Cold Water Pedal Box with Short Pedals
625-LPABCP	Hot and Cold Water Pedal Box with Long Pedals
628-ABCP	Single Supply Pedal Box with Short Pedal



Deck Mount Pre-Rinse Faucets

The high performance of our pre-rinse spray valves is combined with the unmatched durability of our faucet bodies and cartridges for a workhorse dish room product.



ECAST®



919-AS613XKCAB

919-AS317XKCAB



919-VBHS90ANGXKCAB



527-919SLABCP

526-919SASABCP

Model	Spray Valve	Spout	Handle
919-AS317XKCAB	1.25 GPM Trigger Adjustable Spray	-	4" Wristblade
919-AS613XKCAB	1.25 GPM Trigger Adjustable Spray	9-1/2" Swing	2-3/8" Lever
919-ASXKCAB	1.25 GPM Trigger Adjustable Spray	-	2-3/8" Lever
919-XKCAB	1.0 GPM 90 Series Spray	-	2-3/8" Lever
919-VBXCAB	1.0 GPM 90 Series Spray With Inline Vacuum Breaker	-	2-3/8" Lever
919-613XKCAB	1.0 GPM 90 Series Spray	9-1/2" Swing	2-3/8" Lever
919-SASABCP	1.25 GPM Trigger Adjustable Spray	-	-
919-TFXKCAB	0.9 / 0.99 GPM Triple Force Spray	-	2-3/8" Lever
919-TF613XKCAB	0.9 / 0.99 GPM Triple Force Spray	9-1/2" Swing	2-3/8" Lever
919-VBHS90ANGXKCAB	1.0 GPM 90 Series Spray With Inline Vacuum Breaker	-	2-3/8" Lever

Model	Spray Valve	Handle
526-919SASABCP	1.25 GPM Trigger Adjustable Spray	2-3/8" Lever
527-919SASABCP	1.25 GPM Trigger Adjustable Spray	2-3/8" Lever
527-919SLABCP	1.0 GPM 90 Series Spray	2-3/8" Lever

Deck Mount Pre-Rinse Faucets

- Solid cast brass construction for maximum strength and stability
- Available with a choice of single hole, 4", or 8" centers for installation flexibility

- Interchangeability — spouts, outlets, cartridges, and handles easily updated with other Chicago Faucets components
- Flow rates as low as .91 GPM for dramatic utility savings



509-SSVBL12XKCAB



510-SSXKCAB



524-VBABCP



920-ASABCP



2305-ABCP



2305-613AABCP

Model	Spray Valve	Handle
509-SSVBL12XKCAB	1.0 GPM 90 Series Spray With Inline Vacuum Breaker	2-3/8" Lever
510-SSXKCAB	1.0 GPM 90 Series Spray	2-3/8" Lever
510-SSVBXKCAB	1.0 GPM 90 Series Spray With Inline Vacuum Breaker	2-3/8" Lever

Model	Spray Valve	Handle
524-VBABCP	1.0 GPM 90 Series Spray With Inline Vacuum Breaker	3" Cross

Model	Spray Valve	Handle
920-ASABCP	1.25 GPM Trigger Adjustable Spray	2-3/8" Lever

Model	Spray Valve	Spout	Handle
2305-ABCP	1.0 GPM 90 Series Spray	-	4-5/8" Lever
2305-VBABCP	1.0 GPM 90 Series Spray With Inline Vacuum Breaker	-	4-5/8" Lever
2305-613AABCP	1.0 GPM 90 Series Spray	9-1/2" Swing	4-5/8" Lever
2305-VB613AABCP	1.0 GPM 90 Series Spray With Inline Vacuum Breaker	9-1/2" Swing	4-5/8" Lever



Wall Mount Pre-Rinse Faucets

The high performance of our pre-rinse spray valves is combined with the unmatched durability of our faucet bodies and cartridges for a workhorse dish room product.

- Solid cast brass construction for maximum strength and stability
- Available with adjustable centers for installation flexibility
- Interchangeability – easily updated with other spouts, outlets, cartridges, and handles
- Flow rates as low as .91 GPM for dramatic utility savings



923-ASH613XKCAB

923-HTFXKCAB

Model	Spray Valve	Spout	Handle
923-ASXKCAB	1.25 GPM Trigger Adjustable Spray	-	2-3/8" Lever
923-ASH613XKCAB	1.25 GPM Trigger Adjustable Spray	9-1/2" Swing	2-3/8" Lever
923-ASWSLXKCAB	1.25 GPM Trigger Adjustable Spray	-	2-3/8" Lever
923-HASXKCAB	1.25 GPM Trigger Adjustable Spray	-	2-3/8" Lever
923-HXKCAB	1.0 GPM 90 Series Spray	9-1/2" Swing	2-3/8" Lever
923-HTFXKCAB	0.9 / 0.99 GPM Triple Force Spray	-	2-3/8" Lever
923-XKCAB	1.0 GPM 90 Series Spray	-	2-3/8" Lever
923-H613XKCAB	1.0 GPM 90 Series Spray	9-1/2" Swing	2-3/8" Lever
923-WSLXKCAB	1.0 GPM 90 Series Spray	-	2-3/8" Lever
923-TFXKCAB	0.9 / 0.99 GPM Triple Force Spray	-	2-3/8" Lever
923-TFH613XKCAB	0.9 / 0.99 GPM Triple Force Spray	9-1/2" Swing	2-3/8" Lever
923-VBXKCAB	1.0 GPM 90 Series Spray With Inline Vacuum Breaker	-	2-3/8" Lever
923-613XKCAB	1.0 GPM 90 Series Spray	9-1/2" Swing	2-3/8" Lever
923-613L12XKCAB	1.0 GPM 90 Series Spray	12" Swing	2-3/8" Lever
923-GXKCAB	1.0 GPM 90 Series Spray with 3/8" Inline Offset Supply Arm	-	2-3/8" Lever
923-HVBXKCAB	1.0 GPM 90 Series Spray with 2-1/2" Inline Offset Supply Arm	-	2-3/8" Lever



509-GXKCAB

510-G613L12XKCAB

Model	Spray Valve	Spout	Handle
509-GASXKCAB	1.25 GPM Trigger Adjustable Spray	9-1/2" Swing	2-3/8" Lever
509-GXKCAB	1.0 GPM 90 Series Spray	9-1/2" Swing	2-3/8" Lever
509-GTFXKCAB	0.9 / 0.99 GPM Triple Force Spray	9-1/2" Swing	2-3/8" Lever
509-GCVBL12XKCAB	1.0 GPM 90 Series Spray With Inline Vacuum Breaker	12" Swing	2-3/8" Lever
510-GASXKCAB	1.25 GPM Trigger Adjustable Spray	-	2-3/8" Lever
510-GASWSLXKCAB	1.25 GPM Trigger Adjustable Spray	-	2-3/8" Lever
510-GXKCAB	1.0 GPM 90 Series Spray	-	2-3/8" Lever
510-GTFXKCAB	0.9 / 0.99 GPM Triple Force Spray	-	2-3/8" Lever
510-G613XKCAB	1.0 GPM 90 Series Spray	9-1/2" Swing	2-3/8" Lever
510-G613L12XKCAB	1.0 GPM 90 Series Spray	12" Swing	2-3/8" Lever
510-G613L15XKCAB	1.0 GPM 90 Series Spray	14" Swing	2-3/8" Lever
510-GVB613L12XKCAB	1.0 GPM 90 Series Spray With Inline Vacuum Breaker	12" Swing	2-3/8" Lever
510-GVB613L15XKCAB	1.0 GPM 90 Series Spray With Inline Vacuum Breaker	14" Swing	2-3/8" Lever
610-GCLVBABCP	1.0 GPM 90 Series Spray With Inline Vacuum Breaker	-	2-3/8" Lever



Glass Fillers & Dipperwell Faucet

Designed to deliver a stylish, affordable, and reliable solution – our glass and pot fillers offer a whole new level of durability, reliability, and convenience.

- Solid brass bodies for maximum strength and stability
- Glass fillers feature a heavy-duty metal lever with rubberized coating and an all-brass piston valve for durable, dependable performance

 Bar and Server Stations

 Food Prep Areas

ECAST®



712-ABCP

312-ABCP

324-665PSHABCP

Model	Description
312-ABCP*	Wall Mounted Glass Filler
712-ABCP*	Deck Mounted Glass Filler
324-665PSHABCP	Wall Mounted Glass Filler



333-665PSHABCP

Model	Description
333-665PSHABCP*	Deck Mounted Single Hole Metering Dipperwell Faucet



Pot and Kettle Fillers

Our pot and kettle fillers offer unsurpassed durability, reliability, and convenience in the kitchen and make food prep more efficient.

- Solid brass construction for maximum strength and stability
- Choose deck or wall mount configurations with a wide array of spout options to meet your application

 Bar and Server Stations

 Food Prep Areas

ECAST®



Model	Spout	Outlet	Handle
332-ABCP	6" Swing	2.2 GPM	2-3/8" Lever
332-DJ21ABCP	21" Double Jointed	Full Flow	2-3/8" Lever
332-DJ24ABCP	24" Double Jointed	Full Flow	2-3/8" Lever
332-DJ26ABCP	26" Double Jointed	Full Flow	2-3/8" Lever
334-ABCP	12" Swing	Full Flow	2-3/8" Lever
334-DJ21ABCP	21" Double Jointed	Full Flow	2-3/8" Lever
334-DJ24ABCP	24" Double Jointed	Full Flow	2-3/8" Lever
334-DJ26ABCP	26" Double Jointed	Full Flow	2-3/8" Lever
511-ABCP	21" Double Jointed	Full Flow	2-3/8" Lever
512-GXKCABCP	Kettle Filler Valve	Full Flow	2-3/8" Lever
515-ABCP	18" Double Jointed	Full Flow	2-3/8" Lever
516-ABCP	21" Double Jointed	Full Flow	2-3/8" Lever





Pre-Rinse Sprays, Filler Valves & Hoses

These products are designed for high performance and reliability. Our 99 Series sprays feature an adjustable spray pattern so you can choose the right pattern for the job.

- Triple Force delivers a .91 GPM flow rate and the industry's best cleanability time
- The 90 Series features durable metal construction to stand up to the daily grind
- The 99-AS lets the user choose the spray pattern by adjusting hand pressure



99-ASAB

Model	Description
99-ASAB	1.25 GPM Max. @ 60 PSI Spray Valve Water Conserving Pre-Rinse



99TFAB

Model	Description
99TFAB	0.91 / 0.99 GPM @ 60 PSI Triple Force™ Water Conserving Pre-rinse Spray Valve



90-LABCP

90-ANGABCP

Model	Description
90-LABCP	1.0 GPM @ 60 PSI Spray Valve Water Conserving Pre-rinse
90-ANGABCP	1.0 GPM @ 60 PSI Spray Valve Water Conserving Pre-rinse
90-HABCP	2.5 GPM @ 60 PSI Hose Reel Pre-rinse Spray Valve



90-GNABCP

90-ANGE3ABCP

Model	Description
90-ANGE3ABCP	2.2 GPM @ 60 PSI Pre-rinse Glass Filler
90-GNABCP	Full Flow Kettle Filler Valve



83-29ABNF

Model	Description
83-29ABNF	29" Stainless Steel Hose/Handle Assembly with Competitor Adapters
83-44ABNF	44" Stainless Steel Hose/Handle Assembly with Competitor Adapters
83-77ABNF	77" Stainless Steel Hose/Handle Assembly with Competitor Adapters



Hand Sink Faucets

Designed to help maintain good hand hygiene habits, we offer a wide selection of faucets with gooseneck spouts for improved accessibility in a choice of styles.

- Electronic faucets offer touch-free operation for added hygiene and convenience
- Manual faucets available with metering operation to eliminate handle contact after hand washing



ECAST[®]



116.123.AB.1



116.124.AB.1



116.973.AB.1



895-E35-665ABCP



2302-E35ABCP



786-E35-665ABCP

Deck Mount Electronic With 5-1/4" Gooseneck Spout

Model	Outlet	Water Temperature Control	Power Source
116.123.AB.1*	0.5 GPM	User Adjustable Temperature Control	Hard Wire
116.223.AB.1*	0.5 GPM	User Adjustable Temperature Control	Battery Operated
116.973.AB.1*	1.0 GPM	External Thermostatic Mixing Valve	SSPS

Wall Mount Electronic With 5-1/4" Gooseneck Spout

Model	Outlet	Water Temperature Control	Power Source
116.124.AB.1*	0.5 GPM	User Adjustable Temperature Control	Hard Wire
116.224.AB.1*	0.5 GPM	User Adjustable Temperature Control	Battery Operated
116.974.AB.1*	1.0 GPM	External Thermostatic Mixing Valve	SSPS

Deck Mount Manual With Gooseneck Spout

Model	Spout	Outlet	Handle
2302-E35ABCP	5-1/4" Gooseneck	1.5 GPM	4-5/8" Lever
895-E35-665ABCP	3-1/2" Gooseneck	1.5 GPM	1-3/4" Push
786-E35-665ABCP	5-1/4" Gooseneck	1.5 GPM	1-3/4" Push



Manual Lavatory Faucets

Designed with durable solid brass construction and a choice of cartridges to meet your application, including metering, ceramic, or our time-tested Quatum™ cartridge.

- Solid cast brass construction for maximum strength and stability
- Integral spout design with fewer parts for a one-person installation in just a matter of minutes



ECAST®



3500-E2805ABCP



3502-E2805ABCP

Model	Water Temperature Control	Outlet	Handle
3500-E2805ABCP*	Single Supply for Tempered Water	0.5 GPM	Push
3501-E2805ABCP*	Concealed Internal Temperature Control	0.5 GPM	Push
3502-E2805ABCP*	User Adjustable Temperature Control	0.5 GPM	Push



420-ABCP

Model	Spout	Outlet	Handle
420-ABCP*	4-5/8" Integral	1.5 GPM	Single Lever
420-E2805ABCP*	4-5/8" Integral	0.5 GPM	Single Lever
420-E39VPABCP	4-5/8" Integral	0.35 GPM	Single Lever
420-POABCP*	4-5/8" Integral	1.5 GPM	Single Lever



802-665ABCP



802-1000ABCP

Model	Spout	Outlet	Handle
802-1000ABCP	4" Integral	2.2 GPM	2" Canopy
802-317ABCP*	4" Integral	2.2 GPM	4" Wristblade
802-665ABCP*	4" Integral	2.2 GPM	1-3/4" Push
802-ABCP*	4" Integral	2.2 GPM	2-3/8" Lever



Electronic Lavatory Faucets

The most dependable electronic faucets you can buy – consistently reach over **4 million** faultless activations. Our HyTronic® and E-Tronic® 40 faucets save water, improve hygiene, and provide an upgraded look to any restroom.

- Electronics are housed in the faucet body, above the deck, for easier installation and maintenance than any other faucet on the market
- A choice of 3 power sources: AC, DC, or our Self-Sustaining Power System
- All models feature external user-adjustable temperature control except E-Tronic 40 and HyTronic with SSPS



Restrooms



Hand Wash

ECAST®



HyTronic Contemporary



HyTronic Traditional



HyTronic Curve



HyTronic Edge



E-Tronic 40

Style	Model	Outlet	Power Source
HyTronic Traditional	116.121.AB.1*	0.5 GPM	Hard Wire
	116.221.AB.1*	0.5 GPM	Battery Operated
	116.971.AB.1*	0.5 GPM	SSPS
HyTronic Contemporary	116.102.AB.1*	0.5 GPM	Hard Wire
	116.222.AB.1*	0.5 GPM	Battery Operated
	116.972.AB.1*	0.5 GPM	SSPS
HyTronic Curve	116.777.AB.1	0.5 GPM	Hard Wire
	116.877.AB.1	0.5 GPM	Battery Operated
	116.977.AB.1	0.5 GPM	SSPS
HyTronic Edge	116.778.AB.1	0.5 GPM	Hard Wire
	116.878.AB.1	0.5 GPM	Battery Operated
	116.978.AB.1	0.5 GPM	SSPS
E-Tronic 40	116.606.AB.1*	0.5 GPM	Battery Operated
	116.706.AB.1*	0.5 GPM	Hard Wire
	116.956.AB.1*	0.5 GPM	SSPS



Janitorial Sink Products

Our janitorial sink faucets are engineered for high-use, high-abuse commercial applications and feature:

- Heavy-duty, solid cast brass construction for unsurpassed durability
- Vacuum breakers integrated into the spout to help reduce back-flow risk
- Top-mounted wall bracket for extra stability
- Integrated pail hook and hose threaded outlet available for added convenience



Model	Spout	Outlet	Handle	Cartridge
445-VBRXKCRCF*	897-S	3/4" Male Hose Thread	369	XT
445-PVBRXKCCP	–	3/4" Male Hose Thread	369	XT
897-CCP	897	3/4" Male Hose Thread	369	XT
897-CP*	897	3/4" Male Hose Thread	369	XT
897-CRCF	897	3/4" Male Hose Thread	369	XT
897-RCF*	897	3/4" Male Hose Thread	369	XT
540-LD897SWXFACAB	897-S	3/4" Male Hose Thread	369	XT
540-LK897SGXKCCP	897-S	3/4" Male Hose Thread	369	XT

Hose Reels

Durable metal components and compact design for versatile, space saving performance in any food service application.

- Retractable 35' x 3/8" I.D. durable rubber hose for extra convenience
- 90 Series spray with all metal construction for extra durability
- Available with exposed and concealed valve fittings for extra versatility



Model	Spray Valve	Handle	Valve
535-NF	2.5 GPM 90 Series Spray	3" Cross	Exposed
536-NF	2.5 GPM 90 Series Spray	3" Cross	Concealed
537-NF	2.5 GPM 90 Series Spray	–	–
537-WCNF	2.5 GPM 90 Series Spray	–	–

Drains



Food Prep Areas

Model	Description
1366-NF*	Twist Drain
1367-NF	Rotary Drain

Restrooms

Model	Description
327-X1-12TPCP	Grid Drain With 1-1/2" O.D. Tailpiece
327-XCP*	Grid Drain With 1-1/4" O.D. Tailpiece
337-CP	Grid Drain With 1-1/4" O.D. Offset Tailpiece

Eye Wash Products



Food Prep Areas

Model	Description
8004-LHNF	Deck Mounted Left Hand Eye/Face Wash With Push Paddle Handle
8004-RHNF	Deck Mounted Right Hand Eye/Face Wash With Push Paddle Handle
8010-NF	Deck Mounted Swing Down Eye/Face Wash With Push Paddle Handle
8011-NF	Deck Mounted Swing Forward Eye/Face Wash



The finest quality food service products delivered faster than ever before.

Chicago Faucets is committed to providing the highest quality food service products and the customer support to help keep your business running. Standard shipping for most products is 5 days.

CFNow!™ Shipping

We have a number of products designated **CFNow!** and available for shipment within **24 hours** of your order. If you need a product quickly, be sure to visit our website to see our complete list of **CFNow!** products.



All products in this catalog available for **CFNow!** shipment are identified with bold type in the product charts.



Chicago Faucets and Sustainability

Chicago Faucets has been an industry leader in environmental responsibility. From our manual metering faucets to our incredibly dependable HyTronic electronic faucets, we have helped reduce water usage in countless buildings across the globe. We were the first company to offer a complete line of products designed to meet the California lead-free standard, and many of our products also meet the CALGreen water conservation requirements.

Chicago Faucets has earned ISO 14001 certification. We identify any potentially hazardous processes, institute strict controls, continuously monitor outputs to verify compliance, and thereby prevent critical incidents. In order to earn this designation, Chicago Faucets must maintain a Continual Improvement Process focused on:

- **Expansion:** We continually expand our environmental management systems to other business areas.
- **Enrichment:** We extend our environmental management system to more activities, products, processes, emissions, and resources.
- **Upgrading:** We remain knowledgeable of the latest environmental issues and look for ways to improve our systems.

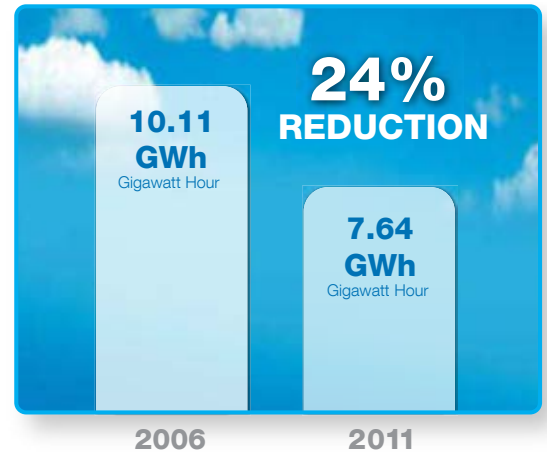
On the following pages, we share some of the measurements we look at annually in an effort to continually reduce our impact on the environment.

Improving Energy Efficiency at Chicago Faucets

Every year, Chicago Faucets conducts energy audits at each of our facilities to measure our improvements and uncover additional areas for energy reduction. Our audits have helped identify the energy usage of operating equipment, air compressor systems, and HVAC systems, and revealed the various ways that our demand for operating energy could be reduced by using these systems more efficiently.

Our efforts to reduce energy consumption are aligned with our commitment to use resources more efficiently and protect the environment. Over the past five years, Chicago Faucets has reduced overall energy consumption by 24% in our three manufacturing facilities.

Electricity Usage

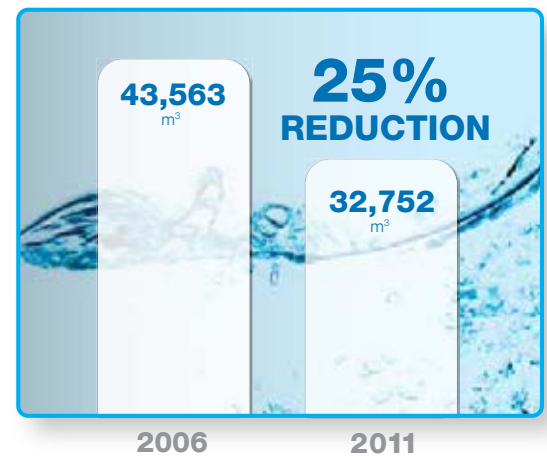


We're Serious About Saving Water

Chicago Faucets has taken several significant steps to advance a more comprehensive and collaborative approach to water management. In addition to reducing water usage, we have implemented robust programs for the treatment of post-production waste water.

Our commitment to water conservation has resulted in dramatic improvements at all our facilities. Over the past five years, Chicago Faucets has reduced annual fresh water consumption by 25% in our three manufacturing facilities.

Water Usage



CASE STUDY

Our Duffin facility in Elyria, Ohio, machines most of our components. To help reduce energy consumption, we invested in new variable speed air compressor technology for the facility. When demand for the compressor is reduced, it automatically kicks down to a lower speed to reduce energy use. Duffin expects to see a 10% reduction in energy usage over the first twelve months of use.

Reducing Landfill Waste Through Recycling at Our Facilities

Over the past five years, Chicago Faucets has continually reduced the amount of waste going to landfill, while increasing the amount of recycled waste. In our Milwaukee facility alone, we have reduced the amount of landfill waste by 60%. An amazing 98% of our scrap brass is recycled, and since we utilize a clean, virgin alloy manufacturing process, the scrap can be recycled and returned as ingot for casting.

Our commitment to waste reduction and recycling has resulted in dramatic improvements at all our facilities. Over the past five years, Chicago Faucets has reduced landfill impact by increasing recycling by 16 times – over 350 tons per year.

Waste Recycling

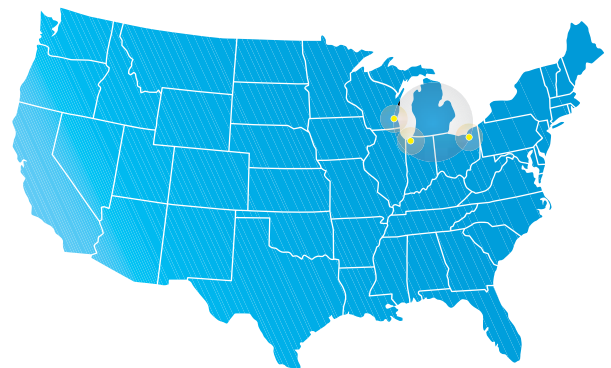


Centralized Logistics Mean Lower Environmental Impact

Centralized logistics helps Chicago Faucets increase efficiency and reduce environmental impact. Our Michigan City, Indiana location is utilized to ship orders throughout North America. The site is situated in the heart of the United States, a short distance from our Ohio and Wisconsin production sites.

Additionally, all of our facilities look to local suppliers to provide the materials necessary to deliver a finished product. Our focus on centralized logistics has resulted in nearly 90% of material purchases from vendors within a 200 mile radius of each facility.

Centralized Location, Local Suppliers



CASE STUDY

In addition to reducing water usage, Starline, our Milwaukee, Wisconsin foundry, utilizes a state-of-the-art waste water treatment system that has been recognized by the City of Milwaukee for its environmental effectiveness. This system filters metals from the waste water to a level that is 100 times less than the legal requirement – less than 2 parts per million – and is tested by the EPA five times a year.



We are a member of the U.S. Green Building Council and support the Leadership in Energy and Environmental Design (LEED) Green Building Rating System™, to measure the efficiency and sustainability of buildings in the U.S. and Canada. If you are trying to achieve LEED Certification for your building, our low-flow outlets, metering cartridges, and sensor-operated faucets can contribute points in these areas: Water Efficiency
Credit 2: Innovative Wastewater Technologies and Water Efficiency
Credit 3: Water Use Reduction



We are proud to be a partner with WaterSense®, sponsored by the EPA and designed to protect the future of our nation's water supply by promoting efficiency and enhancing the market for water efficient products, programs, and practices.



We are a charter sponsor of the Alliance for Water Efficiency, a non-profit organization that is dedicated to the efficient and sustainable use of water. It brings together a diverse range of stakeholders to advocate water efficiency and conservation.



Geberit Group