

CENTRIFUGAL PUMPS

SELF-PRIMING TURF BOSS 3-5 HP

FPS

FEATURES

- **Volute:** Built-in suction check valve facilitates priming and prevents back flow or siphoning
- **Impeller:** Combining efficient operation with durable construction to allow for use in a broad range of pumping applications; 5 hp is 304 stainless steel, 3 hp is cast iron (stainless steel coming soon)
- **Seal:** Standard carbon/ceramic faces; FKM elastomers; 300 series stainless steel components
- **Diffuser:** Cast iron is utilized in all models to improve pump efficiency
- **Motor:** Standard JM frame



SPECIFICATIONS

- Capacities to 160 gpm
- Heads to 170 feet
- 75 psi maximum working pressure
- 120 °F maximum temperature
- Clockwise rotation when viewed from motor end
- NPT pipe connections

APPLICATIONS

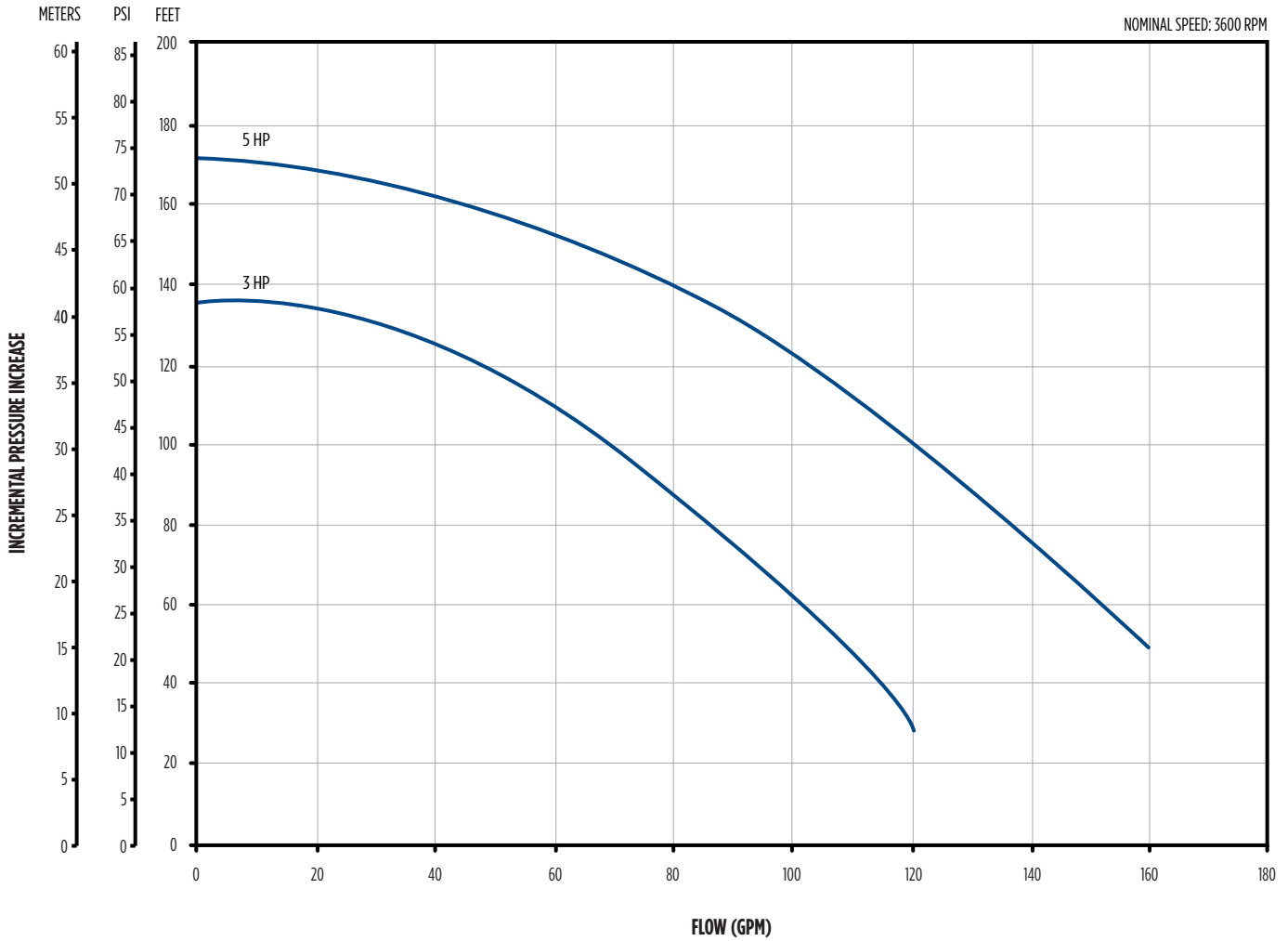
- Irrigation
- Construction
- Commercial
- Municipal
- Light Industrial
- Residential
- Water Transfer

CENTRIFUGAL PUMPS

SELF-PRIMING TURF BOSS 3-5 HP



PERFORMANCE



Model	HP	Total Suction Lift (ft)	Discharge Pressure (PSI)									Shut-off Pressure (PSI)
			25	30	35	40	45	50	55	60	65	
FTB3CI	3	5	99	90	81	70	60	47	-	-	-	56
		10	95	86	77	66	54	-	-	-	-	54
		15	91	82	73	62	49	-	-	-	-	51
		20	87	78	68	56	42	-	-	-	-	49
		25	84	74	63	51	-	-	-	-	-	-
FTB5CI	5	5	149	141	131	122	112	102	89	74	55	71
		10	146	137	127	118	108	97	82	65	-	69
		15	142	132	124	114	104	92	76	57	-	67
		20	138	129	119	109	98	84	68	-	-	65
		25	134	125	116	105	92	78	60	-	-	63

CENTRIFUGAL PUMPS

SELF-PRIMING TURF BOSS 3-5 HP



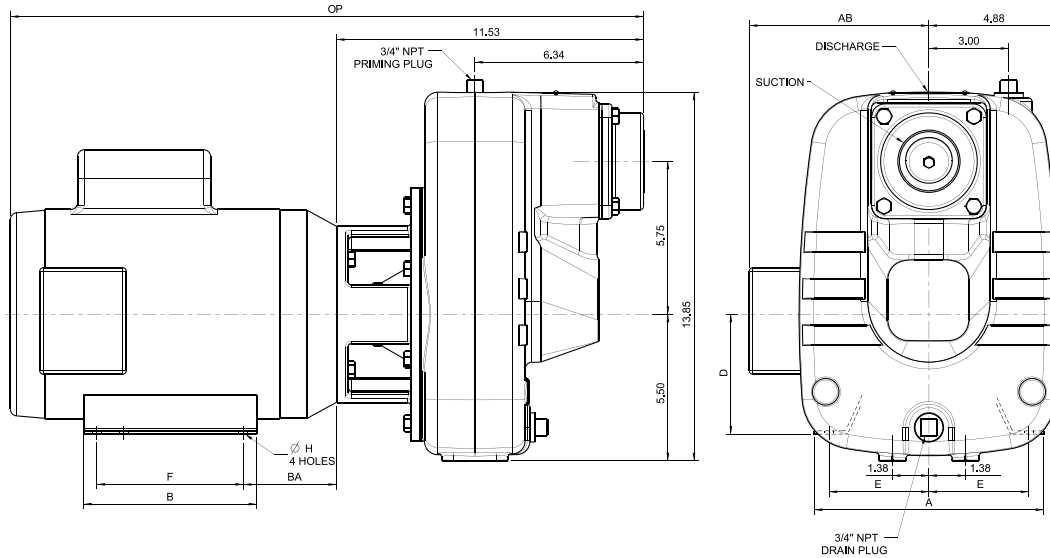
ORDER INFORMATION

HP	Pump Size (Suc. x Dis.)	ECNL	Phase	Volts	SFA	Motor Frame Size	Motor Code	Model	Order No.	Wt. (lbs)
3	2" x 2"	ODP	1	115/230	33.4/16.7	182JM	JM-1	FTB3CI	92980030	134
			3	230/460	8.4/4.2	145JM	JM-1	FTB3CI-T	92980035	110
		TEFC	1	115/230	33.4/16.7	182JM	JM-1	FTB3CI-E	92980130	134
			3	230/460	8.2/4.1	145JM	JM-1	FTB3CI-TE	92980135	110
			3	575	3.3	145JM	JM-1	FTB3CI-T5E	92980136	106
			3	575	3.3	145JM	JM-1	FTB3CI-T5E	92980136	106
5	2 1/2" x 2"	ODP	1	230	25.3	184JM	JM-1	FTB5CI	92980050	140
			3	230/460	13.8/6.9	182JM	JM-1	FTB5CI-T	92980055	130
		TEFC	1	230	19.0	184JM	JM-1	FTB5CI-E	92980150	140
			3	230/460	13.4/6.7	184JM	JM-1	FTB5CI-TE	92980155	130
			3	575	5.4	184JM	JM-1	FTB5CI-T5E	92980156	125
			3	575	5.4	184JM	JM-1	FTB5CI-T5E	92980156	125

PUMP END KITS

HP	Pump Size (Suc. x Dis.)	NEMA Mtr Frame Size Fitment			Model	Order No.	Wt. (lbs)
3	2" x 2"	143-184JM	4.5 AK	0.875" Shaft	FTB3CI-PE	92980033	60
5	2-1/2" x 2"				FTB5CI-PE	92980053	

DIMENSIONS



Model	Enclosure	Pump Size (SUC. X DIS)	Dimensions (in.)								
			A	B	D	E	F	H	AB	BA	OP
FTB3CI	ODP	2" X 2"	8.63	6.50	4.50	3.75	5.50	0.41	6.75	3.50	23.78
FTB3CI-E	TEFC	2" X 2"	8.63	6.50	4.50	3.75	5.50	0.44	6.87	3.50	29.59
FTB3CI-T	ODP	2" X 2"	6.50	5.94	3.50	2.75	5.00	0.34	5.62	2.88	22.41
FTB3CI-TE	TEFC	2" X 2"	6.50	5.94	3.50	2.75	5.00	0.38	5.74	2.88	23.57
FTB3CI-T5E	TEFC	2" X 2"	6.50	5.94	3.50	2.75	5.00	0.38	5.74	2.88	23.57
FTB5CI	ODP	2 1/2" X 2"	8.63	6.50	4.50	3.75	5.50	0.41	6.75	3.51	23.78
FTB5CI-E	TEFC	2 1/2" X 2"	8.63	6.50	4.50	3.75	5.50	0.45	6.87	3.50	26.83
FTB5CI-T	ODP	2 1/2" X 2"	8.63	6.50	4.50	3.75	5.50	0.41	6.74	3.50	23.78
FTB5CI-TE	TEFC	2 1/2" X 2"	8.63	6.50	4.50	3.75	5.50	0.41	6.87	3.50	25.34
FTB5CI-T5E	TEFC	2 1/2" X 2"	8.63	6.50	4.50	3.75	5.50	0.41	6.87	3.50	25.34

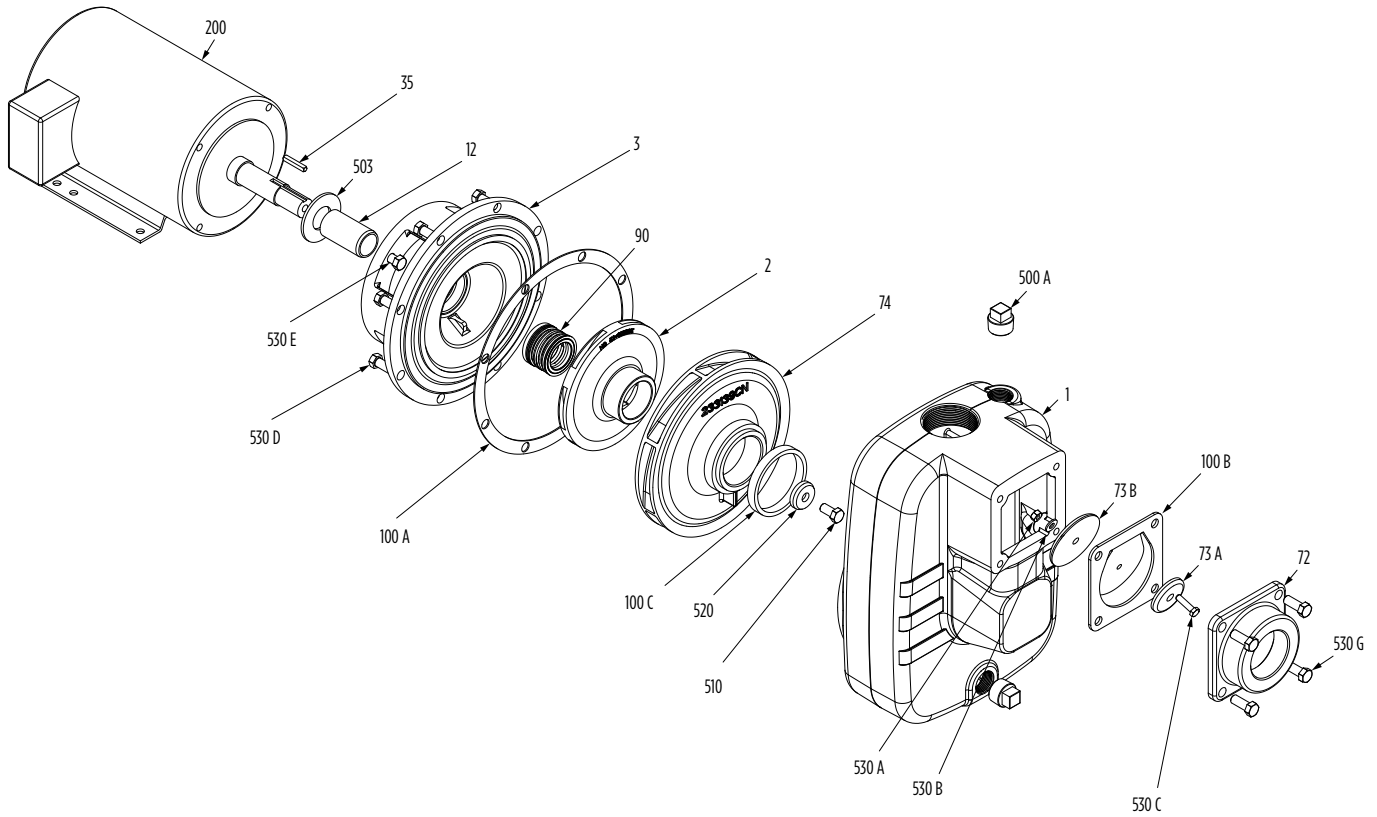
NOTE: Dimensions are for estimating purposes only

CENTRIFUGAL PUMPS

SELF-PRIMING TURF BOSS 3-5 HP



REPAIR PARTS



CENTRIFUGAL PUMPS

SELF-PRIMING TURF BOSS 3-5 HP



REPAIR PARTS

Fig. No.	Part Description	Part No.		Materials of Construction	
		3 HP	5 HP	3 HP	5 HP
1	Pump Case	305461011		Cast iron, ASTM-A48 CL30	
2	Impeller	305453025	305453026	Cast iron, ASTM-A48 CL30	304 Stainless steel
3	Motor Adapter	305461012		Cast iron, ASTM-A48 CL30	
12	Mechanical Seal Shaft Sleeve	305458011		416 Stainless steel	
35	Shaft Key	305453028	305451003	301 Stainless steel	
72	Check Valve	305455010	305460018	Cast iron, ASTM-A48 CL30	
73A	Top Weight, Check Valve	305455011		Cast iron, ASTM-A48 CL30	
73B	Bottom Weight, Check Valve	305455012		Cast iron, ASTM-A48 CL30	
74	Diffuser	305460019		Cast iron, ASTM-A48 CL30	
90	Mechanical Shaft Seal	305457011		Carbon/ceramic x FKM/stainless steel	
100A	Case Gasket	305461013		Nitrile	
100B	Flapper Valve	305454043		Neoprene	
100C	Square-Ring, Volute	305463131		Nitrile	
200	Motor	See Motor section		Misc.	
500	Pipe Plug, 3/4" (2 req.)	305463050		CAD-plated steel	
503	Water Slinger	305453030		Neoprene	
510	Bolt, Impeller	305461014		416 Stainless steel	
520	Washer, Impeller	305448013	305455014	417 Stainless steel	
530A	Nut, Flapper	305463082		300 Stainless steel	
530B	Washer, Flapper	305463084		300 Stainless steel	
530C	Bolt, Flapper	305463080		316 Stainless steel	
530D	Hex Bolts, Volute (8 pack)	305463064		Zinc-plated steel	
530E	Hex Bolt, Motor Adapter (4 req.)	305463120	305463121	Zinc-plated steel	
530G	Hex Bolt, Check Valve	305463010		Zinc-plated steel	

REPLACEMENT MOTORS

RPM	ENCL	PH	Volts	HP	Mtr S.F.	SFA	Frame	Motor Code	Motor Number	Wgt. Lbs.	
3600	ODP	1	115/230	3	1.15	33.4/16.7	182JM	JM-1	305374930	70	
			230	5	1.15	25.3	184JM	JM-1	305374931	78	
		3	230/460	3	1.15	8.4/4.2	145JM	JM-1	104236202	49	
				5	1.15	13.8/6.9	182JM	JM-1	104236204	64	
		TEFC	1	115/230	3	1.15	33.4/16.7	182JM	JM-1	107026029	79
					5	1.15	19.0	184JM	JM-1	104220002	93
	3		230/460	3	1.15	8.2/4.1	145JM	JM-1	104238202	54	
				5	1.15	13.4/6.7	184JM	JM-1	104238204	79	
				3	1.15	3.3	145JM	JM-1	104224201	50	
				5	1.15	5.4	184JM	JM-1	104224202	74	

MOTOR FIT CODE

Motor Fit Code	Flange Rabbet, AK	Shaft End Diameter, U	Shaft Length	Fits Motor Frame
JM-1	4.5	0.875"	4.25"	143-145-182-184

NOTES

SELF-PRIMING TURF BOSS 3-5 HP



NOTES

SELF-PRIMING TURF BOSS 3-5 HP





Franklin Electric