

TOWN SQUARE® S FREESTANDING TUB

2546004 TOWN SQUARE S FREESTANDING TUB

Product Features:

- Stately Traditional style
- Straight flat back wall of the tub allows for a flush-to-the-wall installation
- 17" Soaking depth for a luxurious bathing experience
- High quality seamless acrylic construction with fiberglass reinforcement
- Center drain
- Wide back ledge is ideal for deck mount filler
- Wide deck ledge can be used to store bath accessories
- Integrated tub drain for easy installation
- Adjustable leveling feet under the tub
- Easy to clean high-gloss surface
- Removable access panel on the back of the tub
- Coordinates with Town Square S bathroom suite making a complete bathroom remodel easier
- Limited Lifetime warranty

Nominal Dimensions:

68" x 36" x 24-7/16"
(1727 x 915 x 620mm)

Compliance Certifications -

Meets or Exceeds the Following Specifications:

- IAPMO Z124
- CSA B45.5-11



*Deck mount filler and overflow cover sold separately.

SEE REVERSE SIDE FOR ROUGHING-IN DIMENSIONS AND PRODUCT SPECIFICATIONS

To Be Specified - Required:

- Color: .020 White

1614.305 Town Square® S Free Standing Tub
Overflow Cover and Drain Kit

Choose Finish:

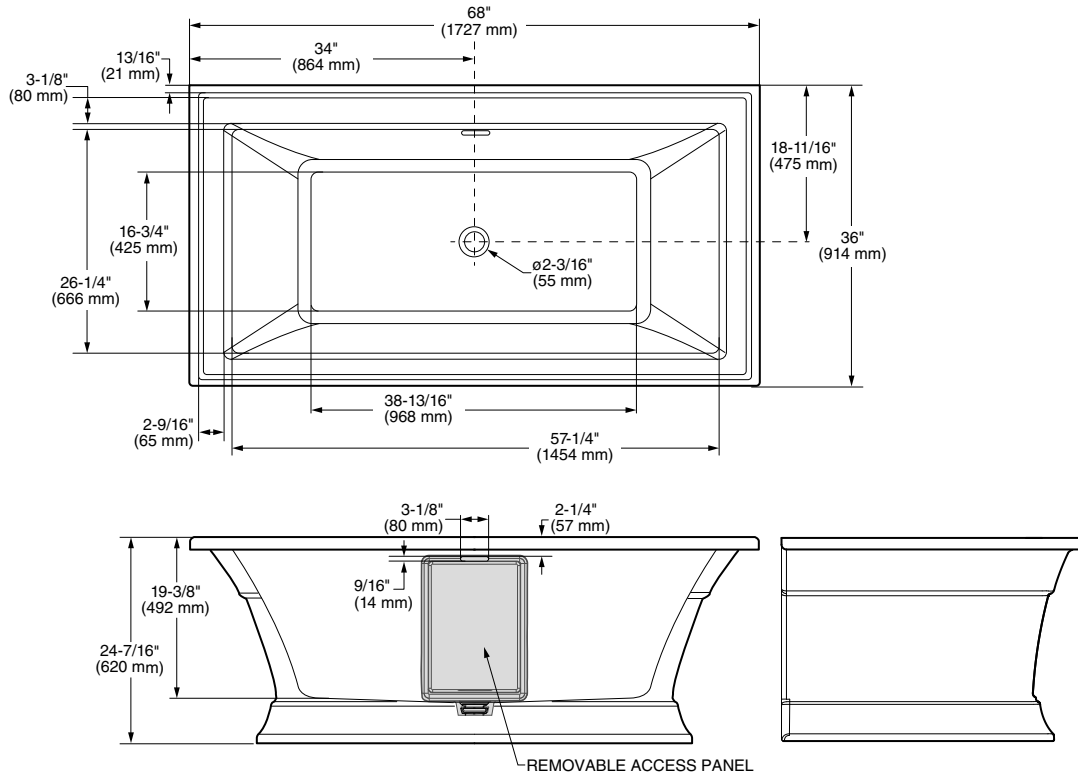
- .002 Chrome
- .013 Polished Nickel
- .278 Legacy Bronze
- .295 Brushed Nickel

Recommended: For concrete slab installation

Drain adapter rough-in suggest

- OS&B® ABS Island Tub Drain™ Rough-In #ITD35
- PVC Island Tub Drain™ Rough-In #ITD5135
- or
- Cast Iron Island Tub Drain Rough-In #ID357

Island Tub Drain™ is a registered trademark of OS&B®



GENERAL SPECIFICATIONS FOR 2546 FREE STANDING BATH	
INSTALLED SIZE	68 x 36 x 24-7/16 in. (1727 x 914 x 620mm)
WEIGHT	163 Lbs. (74 Kg.)
WEIGHT w/WATER	782 Lbs. (355 Kg.)
GAL. TO OVERFLOW	74 Gal. (280L)
BATHING WELL AT SUMP	38-13/16 x 16-3/4 In. (968 x 425mm)
BATHING WELL AT RIM	57-1/4 x 26-1/4 In. (1454 x 666mm)
WATER DEPTH TO OVERFLOW	17 In. (431mm)
FLOOR LOADING (PROJECTED AREA)	46 Lbs./Sq.Ft. (225 Kgs./Sq.m)

NOTES:

■ REFER TO INSTALLATION INSTRUCTIONS SUPPLIED WITH BATHTUB FOR ADDITIONAL INFORMATION.

Fittings not included and must be ordered separately.

Provide suitable reinforcement for all supports.

Mounting holes drilled by installer.

IMPORTANT: Dimensions of fixtures are nominal and may vary within the range of tolerances established by ANSI Standard Z124.1.2. These measurements are subject to change or cancellation. No responsibility is assumed for use of superseded or voided leaflet.