



## Surgeon Scrub-Up Pedal Valve

**Model No: 54T5400A**

### ***COMPLIES WITH:***

- CSA certified
- Complies to ASME Standard A112.18.1/CSA B125.1
- Outlet option 2, 3, 4 and 7 are EPA WaterSense listed
- Verified compliant with 0.25% weighted average Pb content regulations
- (Contact Delta Representative for State and/or Local Approvals)



### ***SPECIFICATION:***

- Foot Pedal Mixing Valve
- Outlet: No Outlet
- No Spout-Valve only
- Forged brass floormount self close foot pedal valve
- Two indexed pedals
- Polished chrome plate finish
- No stops

### ***OPERATION:***

- Not Available

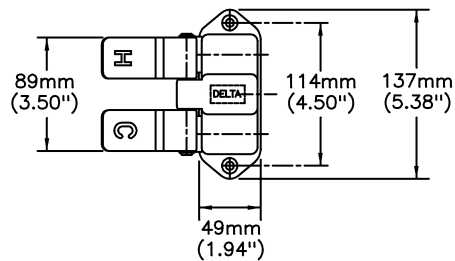
***(Dimensional drawing on following page)***

Delta reserves the right (1) to make changes to specifications and materials, and (2) to change or discontinue models, both without notice or obligation. Dimensions are for reference. Measurement may vary plus or minus 6mm(0.25"). Mounting locations are suggested only. Check with local codes for requirements in your area. This spec was produced December 19, 2016.

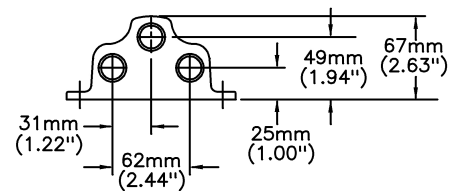
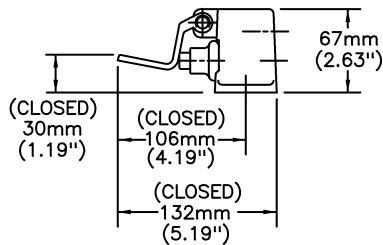
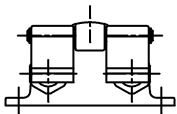
Delta Faucet Company - 55 East 111th St. - Indianapolis, Indiana, USA 46280 - (317) 848-1812  
Delta Faucet Canada - 395 Matheson Blvd E - Mississauga, Ontario, Canada L4Z 2H2 - (905) 712-3030

Model No: 54T5400A

**FINISH:**  
 BODY - BRASS, POLISHED CHROME PLATED  
 PEDALS - BRASS, CHROME PLATED  
**INCLUDES:**  
 TWO - No. 12 WOODSCREWS 1 1/2" LONG



TOP VIEW



1/2" FIP  
 INLETS & OUTLETS  
 (BACK VIEW)

Delta reserves the right (1) to make changes to specifications and materials, and (2) to change or discontinue models, both without notice or obligation. Dimensions are for reference. Measurement may vary plus or minus 6mm(0.25"). Mounting locations are suggested only. Check with local codes for requirements in your area. This spec was produced December 19, 2016.

Delta Faucet Company - 55 East 111th St. - Indianapolis, Indiana, USA 46280 - (317) 848-1812  
 Delta Faucet Canada - 395 Matheson Blvd E - Mississauga, Ontario, Canada L4Z 2H2 - (905) 712-3030