

P-C & P-S: DIMENSIONS AND CLEARANCES

NOTE

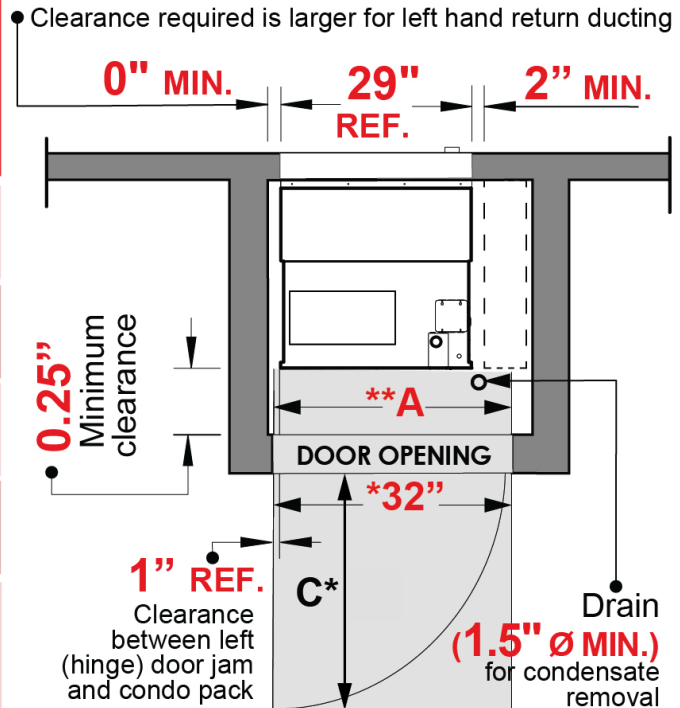
***ENGINEER / ARCHITECT TO CONSULT WITH NAPOLEON ENGINEERING TO DETERMINE BRACKET LOCATION FOR SETTING THE DESIRED DEPTH OF WALL SLEEVE INTO WALL.

CLEARANCES

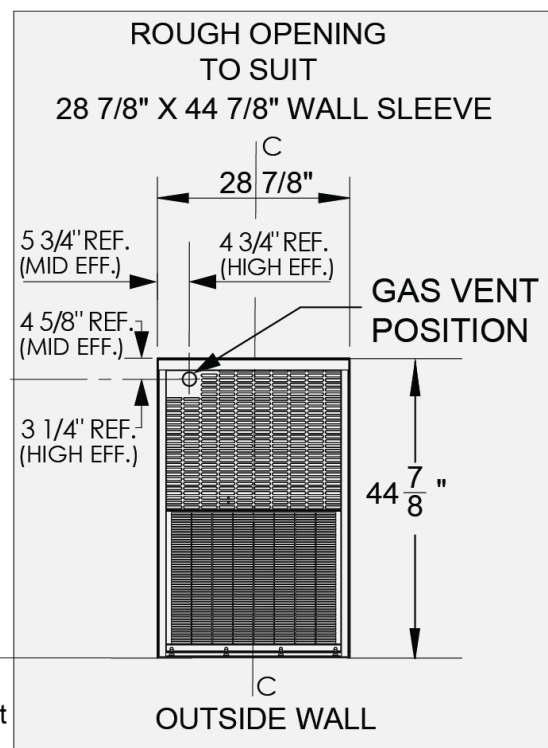
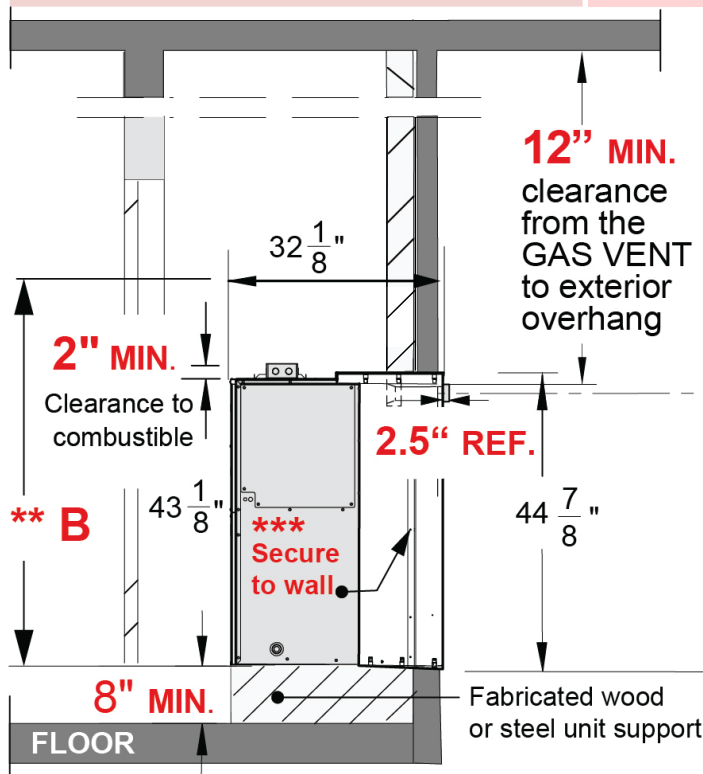
FRONT	0.25" MIN.
RIGHT SIDE	2" MIN.
LEFT SIDE	0"
BOTTOM	8" from the floor

**

A clear and unobstructed passageway (dimension AxB) shall be provided to the unit, in accordance with the requirements of the local authorities having jurisdiction and with the National Fuel Gas Code, ANSI Z223.1 (latest edition) and the National Electrical Code in the United States or CAN/CGA-B149.1 & .2 and the Canadian Electrical Code CSA C22.1 Part 1 (latest edition) in Canada.



* 32" x C (32.5") unobstructed clearance is required in front of the unit for complete removal of heating and cooling module.



IMPORTANT: Minimum required vertical clearance of a vent terminal and overhanging structure from the top of the gas vent is 12" (more than 12" is recommended). Check local building codes for other requirements.