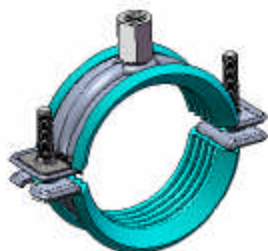


# CADDY® MACROFIX PLUS 430



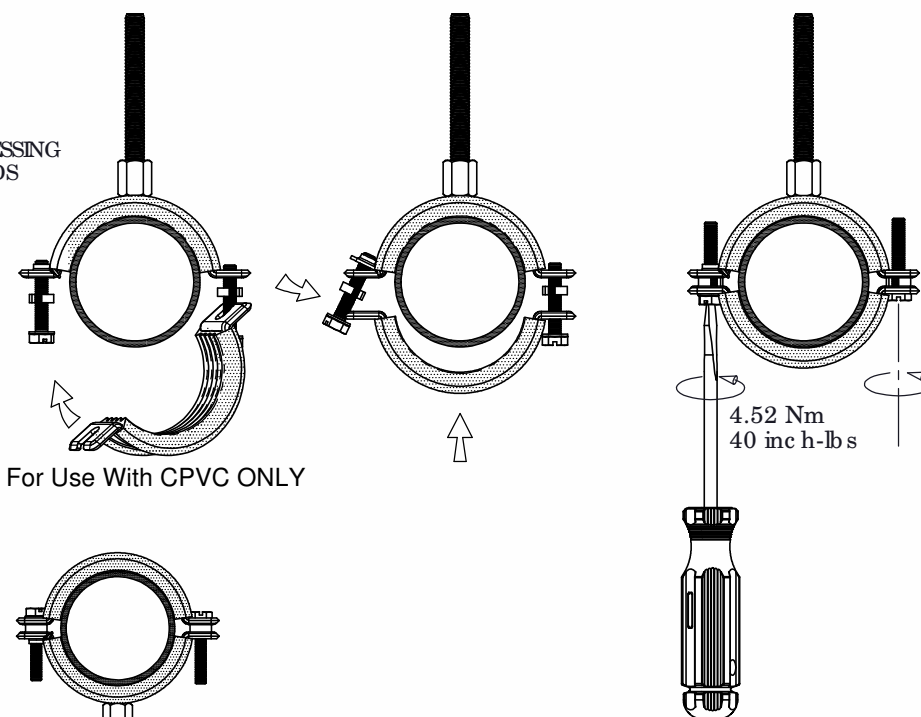
FINISH:  
ELECTRO GALVANIZED ZINC

SUITABLE FOR USE IN AIR HANDLING SPACES

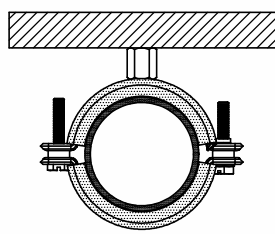
CPVC INSULATED PIPE CLAMP			
Ø 3/8 THREADED ROD PART NUMBER	Ø M10 THREADED ROD PART NUMBER	NOMINAL PIPE SIZE INCHES	OUTSIDE DIA. OF PIPE (INCHES) / mm
	595035		(0.63) / 16
4300050EG	595036	1/2	(0.84) / 21.3
4300075EG	595037	3/4	(1.05) / 26.7
4300100EG	595038	1	(1.32) / 33.4
4300125EG	595039	1-1/4	(1.67) / 42.4
4300150EG	595040	1-1/2	(1.90) / 48.3
	595041		(2.21) / 56
4300200EG	595042	2	(2.37) / 60.3
4300250EG	595043	2-1/2	(2.87) / 73
4300300EG	595044	3	(3.50) / 88.9
4300350EG		3-1/2	(4.00) / 101.6
4300400EG	595045	4	(4.50) / 114.3
	595046		(4.92) / 125
4300500EG	595047	5	(5.56) / 141.3
	595048		(6.30) / 160

INSTALLATION:

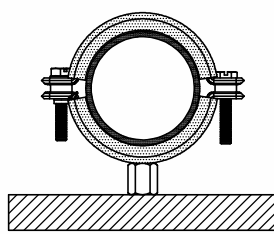
- INSERT PIPE
- CLOSE PIPE CLAMP BY PRESSING THE CLAMP PART UPWARDS
- LET SCREW HEAD LOCK IN THE TABS
- USE A SCREWDRIVER TO TIGHTEN THE TWO SCREWS
- TIGHTEN PIPE CLAMP UNTIL TABS ARE PARALLEL



For Use With CPVC ONLY



VIEW A



VIEW B

WARNING:

1. ERICO products shall be installed and used only as indicated in ERICO product instruction sheets and training materials. Instruction sheets are available at [www.erico.com](http://www.erico.com) and from your ERICO customer service representative.
2. ERICO products must never be used for a purpose other than the purpose for which they were designed or in a manner that exceeds specified load ratings.
3. All instructions must be completely followed to ensure proper and safe installation and performance.
4. Improper installation, misuse, misapplication or other failure to completely follow ERICO's instructions and warnings may cause product malfunction, property damage, serious bodily injury and death.
5. Products that are manufactured using spring steel components shall be used only in a non-corrosive indoor environment.
6. All pipe supports, hangers, intermediate components and structural attachments must ONLY be used as described herein and are NEVER to be used for any other purpose.

NOTE All load ratings are for static conditions and do not account for dynamic loading such as wind, water or seismic loads, unless otherwise noted.

The customer is responsible for:

- a. Conformance to all governing codes.
- b. The integrity of structures to which the products are attached, including the capability of safely accepting the loads imposed, as evaluated by a qualified engineer.
- c. Using appropriate industry standard hardware as noted above.

SAFETY INSTRUCTIONS:

All governing codes and regulations and those required by the job site must be observed. Always use appropriate safety equipment such as eye protection, hard hat, and gloves as appropriate to the application.

All rights reserved. CADDY, CADWELD, CRITEC, ERICO, ERIFLEX, ERITECH, and LENTON are registered trademarks of ERICO International Corporation.



TECHNICAL SUPPORT:  
[www.erico.com](http://www.erico.com)

CFS398\_B 1 OF 1

© 2009 ERICO International Corporation

