



Manufactured by Energy Saving Products Ltd.

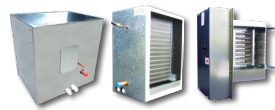
May 2022 Parts List



Hi-Velocity Series
Air Handlers
Pgs. 2-4



Lo-Velocity Series
Air Handlers
Pg. 5



Heating/Cooling
Coils
Pgs. 6-7



HVS Series
Heat Pumps
Pg. 8



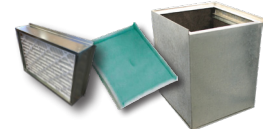
Flexible Duct &
Accessories
Pgs. 9-10



Decorative
Vent Plates
Pg. 11



HEPS Air
Purification
Pg. 12



Filter Racks, Filters
Return Air
Pg. 13



Motors, Blowers,
Controllers
Pgs.14-15



Refrigerant
Components
Pg. 16



Builders Series
Air Handlers
Pgs. 17-18



Energy Saving Products Ltd.
Warranty Info
Pg. 19

Hi-Velocity HE-Z Air Handlers - Zoning Capable



HE-Z Heating Unit (H)



HE-Z Blower Unit (BU)

HE-Z Air Handler with 110v WEG - Zoning Capable

Part Name	Description	lbs	Ship. Dim.	Part Number
HE-Z-50-H-110v	110v Heating Unit w/ VFD Motor	86	37"x19"x17"	41011400050
HE-Z-70-H-110v	110v Heating Unit w/ VFD Motor	99	37"x19"x23"	41011400070
HE-Z-100-H-110v	110v Heating Unit w/ VFD Motor	121	37"x19"x29"	41011400100
HE-Z-50-BU-110v	110v Blower Unit w/ VFD Motor	69	37"x19"x17"	41011200050
HE-Z-70-BU-110v	110v Blower Unit w/ VFD Motor	77	37"x19"x23"	41011200070
HE-Z-100-BU-110v	110v Blower Unit w/ VFD Motor	92	37"x19"x29"	41011200100

• HE-Z 110v Units come complete with powder coated insulated cabinet & fan, Variable Frequency Drive Motor, pre-wired PSB circuit board and 110v WEG Controls pre-installed. Packaged with one universal vent plate key. Heating (H) Units come with HWC water coils installed.

HE-Z Air Handler with 220v WEG - Zoning Capable

Part Name	Description	lbs	Ship. Dim.	Part Number
HE-Z-50-H-220v	220v Heating Unit w/ VFD Motor	86	37"x19"x17"	41010400050
HE-Z-70-H-220v	220v Heating Unit w/ VFD Motor	99	37"x19"x23"	41010400070
HE-Z-100-H-220v	220v Heating Unit w/ VFD Motor	121	37"x19"x29"	41010400100
HE-Z-50-BU-220v	220v Blower Unit w/ VFD Motor	69	37"x19"x17"	41010200050
HE-Z-70-BU-220v	220v Blower Unit w/ VFD Motor	77	37"x19"x23"	41010200070
HE-Z-100-BU-220v	220v Blower Unit w/ VFD Motor	92	37"x19"x29"	41010200100

• HE-Z 220v Units come complete with powder coated insulated cabinet & fan, Variable Frequency Drive Motor, pre-wired PSB circuit board and 220v WEG Controls pre-installed. Packaged with one universal vent plate key. Heating (H) Units come with HWC water coils installed.



HE-Z Series Zoning Package

HE-Z Zone Package - 2, 3 or 4 Collars



2 Supply Collars



3 Supply Collars



4 Supply Collars

Zoning packages include HE-Z Air Handler complete with pre-wired zone panel and 2, 3 or 4 collars, each with power open/close dampers and actuators pre-installed.

HE-Z Air Handler Zoning Package with 110v WEG - Heating (H) Units

Part Name	Description	lbs	Ship. Dim.	Part Number
HE-Z-50-H-110v-Z2	110v Heating Unit c/w Two 8" Collars	93	41"x19"x17"	43011420050
HE-Z-50-H-110v-Z3	110v Heating Unit c/w Two 8" & One 6" Collar	94	41"x19"x17"	43011430050
HE-Z-50-H-110v-Z4	110v Heating Unit c/w Four 6" Collars	95	41"x19"x17"	43011440050
HE-Z-70-H-110v-Z2	110v Heating Unit c/w Two 8" Collars	105	41"x19"x23"	43011420070
HE-Z-70-H-110v-Z3	110v Heating Unit c/w Three 8" Collars	106	41"x19"x23"	43011430070
HE-Z-70-H-110v-Z4	110v Heating Unit c/w Four 6" Collars	108	41"x19"x23"	43011440070
HE-Z-100-H-110v-Z2	110v Heating Unit c/w Two 10" Collars	128	41"x19"x29"	43011420100
HE-Z-100-H-110v-Z3	110v Heating Unit c/w Two 8" & One 10" Collar	130	41"x19"x29"	43011430100
HE-Z-100-H-110v-Z4	110v Heating Unit c/w Four 8" Collars	132	41"x19"x29"	43011440100

HE-Z Air Handler Zoning Package with 110v WEG - Blower (BU) Units

Part Name	Description	lbs	Ship. Dim.	Part Number
HE-Z-50-BU-110v-Z2	110v Blower Unit c/w Two 8" Collars	76	41"x19"x17"	43011220050
HE-Z-50-BU-110v-Z3	110v Blower Unit c/w Two 8" & One 6" Collar	77	41"x19"x17"	43011230050
HE-Z-50-BU-110v-Z4	110v Blower Unit c/w Four 6" Collars	78	41"x19"x17"	43011240050
HE-Z-70-BU-110v-Z2	110v Blower Unit c/w Two 8" Collars	83	41"x19"x23"	43011220070
HE-Z-70-BU-110v-Z3	110v Blower Unit c/w Three 8" Collars	84	41"x19"x23"	43011230070
HE-Z-70-BU-110v-Z4	110v Blower Unit c/w Four 6" Collars	86	41"x19"x23"	43011240070
HE-Z-100-BU-110v-Z2	110v Blower Unit c/w Two 10" Collars	99	41"x19"x29"	43011220100
HE-Z-100-BU-110v-Z3	110v Blower Unit c/w Two 8" & One 10" Collar	101	41"x19"x29"	43011230100
HE-Z-100-BU-110v-Z4	110v Blower Unit c/w Four 8" Collars	103	41"x19"x29"	43011240100

HE-Z Air Handler Zoning Package with 220v WEG - Heating (H) Units

Part Name	Description	lbs	Ship. Dim.	Part Number
HE-Z-50-H-220v-Z2	220v Heating Unit c/w Two 8" Collars	93	41"x19"x17"	43010420050
HE-Z-50-H-220v-Z3	220v Heating Unit c/w Two 8" & One 6" Collar	94	41"x19"x17"	43010430050
HE-Z-50-H-220v-Z4	220v Heating Unit c/w Four 6" Collars	95	41"x19"x17"	43010440050
HE-Z-70-H-220v-Z2	220v Heating Unit c/w Two 8" Collars	105	41"x19"x23"	43010420070
HE-Z-70-H-220v-Z3	220v Heating Unit c/w Three 8" Collars	106	41"x19"x23"	43010430070
HE-Z-70-H-220v-Z4	220v Heating Unit c/w Four 6" Collars	108	41"x19"x23"	43010440070
HE-Z-100-H-220v-Z2	220v Heating Unit c/w Two 10" Collars	128	41"x19"x29"	43010420100
HE-Z-100-H-220v-Z3	220v Heating Unit c/w Two 8" & One 10" Collar	130	41"x19"x29"	43010430100
HE-Z-100-H-220v-Z4	220v Heating Unit c/w Four 8" Collars	132	41"x19"x29"	43010440100

HE-Z Air Handler Zoning Package with 220v WEG - Blower (BU) Units

Part Name	Description	lbs	Ship. Dim.	Part Number
HE-Z-50-BU-220v-Z2	220v Blower Unit c/w Two 8" Collars	76	41"x19"x17"	43010220050
HE-Z-50-BU-220v-Z3	220v Blower Unit c/w Two 8" & One 6" Collar	77	41"x19"x17"	43010230050
HE-Z-50-BU-220v-Z4	220v Blower Unit c/w Four 6" Collars	78	41"x19"x17"	43010240050
HE-Z-70-BU-220v-Z2	220v Blower Unit c/w Two 8" Collars	83	41"x19"x23"	43010220070
HE-Z-70-BU-220v-Z3	220v Blower Unit c/w Three 8" Collars	84	41"x19"x23"	43010230070
HE-Z-70-BU-220v-Z4	220v Blower Unit c/w Four 6" Collars	86	41"x19"x23"	43010240070
HE-Z-100-BU-220v-Z2	220v Blower Unit c/w Two 10" Collars	99	41"x19"x29"	43010220100
HE-Z-100-BU-220v-Z3	220v Blower Unit c/w Two 8" & One 10" Collar	101	41"x19"x29"	43010230100
HE-Z-100-BU-220v-Z4	220v Blower Unit c/w Four 8" Collars	103	41"x19"x29"	43010240100

Hi-Velocity HE-P Series Air Handler Units



HE-P-240 Heating Unit (H)

HE-P Series Air Handler w/ Backward Curved Fan - 220v

Part Name	Description	lbs	Ship. Dim..	Part Number
HE-P-240-H-220v	220v Heating Unit w/ Backward Curved Fan	152	42"x30"x26"	42010400240
HE-P-240-BU-220v	220v Blower Unit w/ Backward Curved Fan	107	42"x30"x26"	42010200240

• HE-P Air Handlers come complete with insulated cabinet & fan, EC motor & blower assembly, and factory pre-wired HEP circuit board. Packaged with one universal vent plate key. Heating (H) Units come with HWC water coils installed. HE-P-240 Air Handlers come with 2 supply outlets.

HE-P Series Air Handler Zoning Package - 220v

Zoning packages include HE-P Air Handler complete with pre-wired zone panel and 2, 3 or 4 collars, each with power open/close dampers and actuators pre-installed.

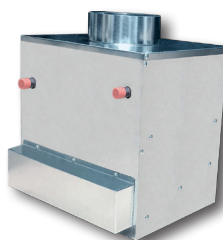
Part Name	Description	lbs	Ship. Dim.	Part Number
HE-P-240-H-220v-Z2	220v Heating Unit w Backward Curved Fan - c/w Two 10" Collars	159	46"x30"x26"	44010420240
HE-P-240-H-220v-Z3	220v Heating Unit w Backward Curved Fan - c/w Three 10" Collars	160	46"x30"x26"	44010430240
HE-P-240-H-220v-Z4	220v Heating Unit w Backward Curved Fan - c/w Four 10" Collars	161	46"x30"x26"	44010440240
HE-P-240-BU-220v-Z2	220v Blower Unit w Backward Curved Fan - c/w Two 10" Collars	114	46"x30"x26"	44010220240
HE-P-240-BU-220v-Z3	220v Blower Unit w Backward Curved Fan - c/w Three 10" Collars	115	46"x30"x26"	44010230240
HE-P-240-BU-220v-Z4	220v Blower Unit w Backward Curved Fan - c/w Four 10" Collars	116	46"x30"x26"	44010240240

• HE-P Air Handler with Zoning Package comes complete with insulated cabinet & fan, EC motor & blower assembly, and factory pre-wired HEP circuit board. Packaged with one universal vent plate key. Heating (H) Units come with HWC water coils installed. Zoning package includes pre-wired zone panel and 2, 3 or 4 collars, each with power open/close dampers and actuators pre-installed.

Hi-Velocity Cube Series Air Handler Units



CU-31-EC-H Heating Unit



CU-51-EC-H Heating Unit

Cube Series Air Handler w/ Backward Curved Fan

Part Name	Description	lbs	Ship. Dim.	Part Number
CU-31-EC-H	Compact Heating Unit w/ Backward Curved Fan	30	20"x20"x18"	41060100031
CU-51-EC-H	Compact Heating Unit w/ Backward Curved Fan	49	20"x20"x18"	41060100051
CU-31-EC-BU	Compact Blower Unit w/ Backward Curved Fan	25	20"x20"x18"	41061100031
CU-51-EC-BU	Compact Blower Unit w/ Backward Curved Fan	32	20"x20"x18"	41061100051

• CUBE Units come complete with insulated cabinet & fan, EC motor & blower assembly, and pre-wired PSB circuit board. Packaged with one universal vent plate key. Heating (H) Units come with HWC water coils installed.

Lo-Velocity Air Handler Units



LV-Z Heating Unit (H)

LV-Z Series Air Handler with 110v WEG - Zoning Capable

Part Name	Description	lbs	Ship. Dim.	Part Number
LV-Z-750-H-110v	110v Heating Unit w/ VFD Motor	80	37"x19"x17"	41011400750
LV-Z-1050-H-110v	110v Heating Unit w/ VFD Motor	93	37"x28"x19"	41011401050
LV-Z-1750-H-110v	110v Heating Unit w/ VFD Motor	152	42"x30"x26"	41011401750
LV-Z-750-BU-110v	110v Blower Unit w/ VFD Motor	63	37"x19"x17"	41011200750
LV-Z-1050-BU-110v	110v Blower Unit w/ VFD Motor	71	37"x28"x19"	41011201050
LV-Z-1750-BU-110v	110v Blower Unit w/ VFD Motor	107	42"x30"x26"	41011201750

LV-Z Series Air Handler with 220v WEG - Zoning Capable

Part Name	Description	lbs	Ship. Dim.	Part Number
LV-Z-750-H-220v	220v Heating Unit w/ VFD Motor	80	37"x19"x17"	41040100750
LV-Z-1050-H-220v	220v Heating Unit w/ VFD Motor	93	37"x28"x19"	41040101050
LV-Z-1750-H-220v	220v Heating Unit w/ VFD Motor	152	42"x30"x26"	41040101750
LV-Z-750-BU-220v	220v Blower Unit w/ VFD Motor	63	37"x19"x17"	41040200750
LV-Z-1050-BU-220v	220v Blower Unit w/ VFD Motor	71	37"x28"x19"	41040201050
LV-Z-1750-BU-220v	220v Blower Unit w/ VFD Motor	107	42"x30"x26"	41040201750

• LV-Z Units come complete with powder coated insulated cabinet & fan, Variable Frequency Drive Motor, pre-wired PSB circuit board and WEG Controls pre-installed. Heating (H) Units come with HWC water coils installed.

LV Series Air Handler

Part Name	Description	lbs	Ship. Dim.	Part Number
LV-50-H	Heating Unit w/ PSC Motor	74	37"x19"x17"	10010300050
LV-70-H	Heating Unit w/ PSC Motor	85	37"x19"x23"	10010300070
LV-120-H	Heating Unit w/ PSC Motor	106	37"x19"x29"	10010300120
LV-140-H	Heating Unit w/ PSC Motor	112	37"x19"x29"	10010300140
LV-50-BU	Blower Unit w/ PSC Motor	57	37"x19"x17"	10013300050
LV-70-BU	Blower Unit w/ PSC Motor	63	37"x19"x23"	10013300070
LV-120-BU	Blower Unit w/ PSC Motor	77	37"x19"x29"	10013300120
LV-140-BU	Blower Unit w/ PSC Motor	83	37"x19"x29"	10013300140

• LV Units come complete with powder coated insulated cabinet & fan, PSC Motor, pre-wired PSC circuit board c/w heat/cool/dehumidification/constant fan/auxiliary relays, timer circuit. Heating (H) Units come with HWC water coils installed.

Heating/Cooling Coils

RBM Refrigerant Base Modules c/w R-410A TXV



RBM Refrigerant Base Module

Part Name	Description	lbs	Ship. Dim.	Part Number
RBM-50 R410A TX Refrigerant Base Module	Fits HE-Z/HE-B/HE/HV-50/51, CU-51, LV-Z/LV-B-750, LV-50 (1.5 - 2 Ton)	35	37"x19"x23"	41090300050
RBM-70 R410A TX Refrigerant Base Module	Fits HE-Z/HE-B/HE/HV-70/71, LV-Z/LV-B/LV-E-1050, LV-70 (2.5 - 3 Ton)	45	37"x19"x23"	41090300070
RBM-100 R410A TX Refrigerant Base Module	Fits HE-Z/HE-P/HE-B/HE/HV-100/101 (3.5 - 5 Ton)	55	37"x19"x23"	41090300100

• RBM Refrigerant Base Modules come with drain pan and two 3/4" drain pan connections (primary/secondary), freeze stat, Schrader valve and expansion valve in R-410A refrigerant, and two T-mounting brackets. Expansion valves are heat pump ready with a built-in check valve.

• Note: Site glass is not included and can be purchased separately.

RPM-E Pre-Piped Cooling Modules c/w R-410A TXV



RPM-E Cooling Module

Part Name	Description	lbs	Ship. Dim.	Part Number
RPM-E-50 R410A Pre-Piped TX Cooling Module	Fits HE-Z/HE-B/HE/HV-50/51, CU-51, LV-Z/LV-B-750, LV-50 (1.5 - 2 Ton)	45	20"x15"x19"	20090200050
RPM-E-70 R410A Pre-Piped TX Cooling Module	Fits HE-Z/HE-B/HE/HV-70/71, LV-Z/LV-B/LV-E-1050, LV-70 (2.5 - 3 Ton)	54	20"x15"x19"	20090200070
RPM-E-100 R410A Pre-Piped TX Cooling Module	Fits HE-Z/HE-P/HE-B/HE/HV-100/101 (3.5 - 5 Ton)	71	33"x15"x21"	20090200100

• RPM-E Coil Modules are pre-assembled with drain pan and two 3/4" drain pan connections (primary/secondary), freeze stat, site glass, Schrader valve and expansion valve in R-410A refrigerant, and two L-mounting brackets. Expansion valves are heat pump ready with a built-in check valve.

RCM Cooling Modules c/w R-410A TXV



RCM Cooling Module

Part Name	Description	lbs	Ship. Dim.	Part Number
RCM-30 R410A TX Cooling Module	Fits CU-31	17	17"x14"x21"	40090200030
RCM-50 R410A TX Cooling Module	Fits HE-Z/HE-B/HE/HV-50/51, CU-51, LV-Z/LV-B-750, LV-50 (1.5 - 2 Ton)	27	18"x11"x19"	10090200050
RCM-70 R410A TX Cooling Module	Fits HE-Z/HE-B/HE/HV-70/71, LV-Z/LV-B/LV-E-1050, LV-70 (2.5 - 3 Ton)	34	23"x11"x19"	10090200070
RCM-100 R410A TX Cooling Module	Fits HE-Z/HE-P/HE-B/HE/HV-100/101 (3.5 - 5 Ton)	45	30"x11"x20"	40090200100

• RCM Coil Modules come with drain pan and two 3/4" drain pan connections (primary/secondary), freeze stat, site glass, Schrader valve and expansion valve in R-410A refrigerant, and two L-mounting brackets. Expansion valves are heat pump ready with a built-in check valve.

WBM Chilled Water Base Modules



WBM Water Coil Base Module

Part Name	Description	lbs	Ship. Dim.	Part Number
WBM-50 Chilled Water Base Module	Fits HE-Z/HE-B/HE/HV-50/51, CU-51, LV-Z/LV-B-750, LV-50	35	37"x19"x23"	40090400050
WBM-70/1050 Chilled Water Base Module	Fits HE-Z/HE-B/HE/HV-70/71, LV-Z/LV-B/LV-E-1050, LV-70	45	37"x19"x23"	40090400070
WBM-100 Chilled Water Base Module	Fits HE-Z/HE-P/HE-B/HE/HV-100/101, LV-Z/LV-B/LV-E-1050, LV-120/140	55	37"x19"x23"	40090400100

• WBM Coil Modules come with drain pan and 2 7/8" FIP drain connections, and two T-mounting brackets.

WCM Chilled Water Modules



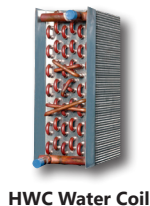
WCM Cooling Module

Part Name	Description	lbs	Ship. Dim.	Part Number
WCM-50 Chilled Water Module	Fits HE-Z/HE-B/HE/HV-50/51, CU-51, LV-Z/LV-B-750, LV-50	26	20"x11"x19"	10010201050
WCM-70/1050 Chilled Water Module	Fits HE-Z/HE-B/HE/HV-70/71, LV-Z/LV-B/LV-E-1050, LV-70	33	24"x11"x19"	10010201070
WCM-100 Chilled Water Module	Fits HE-Z/HE-P/HE-B/HE/HV-100/101, LV-Z/LV-B/LV-E-1050, LV-120/140	44	30"x11"x20"	40090100100
WM-1750 Chilled Water Module	Fits HE-P-240/241, LV-Z/LV-B/LV-E-1750	55	30"x9"x23"	20090101750

• WCM Coil Modules come with drain pan and two 3/4" drain pan connections (primary/secondary), and two L-mounting brackets.

• WM Coil Modules come with two 3/4" PVC drain pan connections and two L-mounting brackets.

Heating Coils Hot Water Coil



Part Name	Description	lbs	Ship. Dim.	Part Number
HWC-30 Hot Water Coil	Fits CU-31, JH-15/30	5	20"x4"x17"	10050500030
HWC-50 Hot Water Coil	Fits HE-Z/HE-B/HE/HV-50/51, CU-51, LV-Z/LV-B-750, LV-50	17	16"x6"x16"	20100100050
HWC-52 Hot Water Coil	Fits HE/HV-52	17	22"x6"x16"	20100100052
HWC-70/1050 Hot Water Coil	Fits HE-Z/HE-B/HE/HV-70/71, LV-70, LV-Z/LV-B/LV-E-1050	22	22"x6"x16"	20100100070
HWC-100 Hot Water Coil	Fits HE-Z/HE-P/HE-B/HE/HV-100/101, LV-120/140	29	28"x6"x16"	20100100100
HWC-1750 Hot Water Coil	Fits HE-P-240/241, HV-140, LV-Z/LV-B/LV-E-1750	45	28"x6"x22"	20100101750

ESH Electrical Strip Heating Coil

NOTE: All ESH/VESH Coils require their own breaker



Part Name	Description	lbs	Ship. Dim.	Part Number
ESH-400-5 kW Electric Strip	Fits CU-31 BU	20	14"x13"x20"	10025400005
ESH-400-10 kW Electric Strip	Fits CU-31 BU	20	14"x13"x20"	10025400010
ESH-650-5 kW Electric Strip	Fits HE-Z/HE-B/HE/HV-50/51 BU, CU-51 BU, LV-Z/LV-B-750, LV-50 BU	21	18"x13"x20"	10025650005
ESH-650-10 kW Electric Strip	Fits HE-Z/HE-B/HE/HV-50/51 BU, CU-51 BU, LV-Z/LV-B-750, LV-50 BU	21	18"x13"x20"	10025650010
ESH-650-15 kW Electric Strip	Fits HE-Z/HE-B/HE/HV-50/51 BU, LV-Z/LV-B-750, LV-50 BU	21	18"x13"x20"	10025650015
ESH-750-5 kW Electric Strip	Fits HE-Z/HE-B/HE/HV-70/71 BU, LV-Z/LV-B/LV-E-1050, LV-70 BU	27	18"x13"x24"	10025750005
ESH-750-10 kW Electric Strip	Fits HE-Z/HE-B/HE/HV-70/71 BU, LV-Z/LV-B/LV-E-1050, LV-70 BU	27	18"x13"x24"	10025750010
ESH-750-15 kW Electric Strip	Fits HE-Z/HE-B/HE/HV-70/71 BU, LV-Z/LV-B/LV-E-1050, LV-70 BU	27	18"x13"x24"	10025750015
ESH-750-18 kW Electric Strip	Fits HE-Z/HE-B/HE/HV-70/71 BU, LV-Z/LV-B/LV-E-1050, LV-70 BU	27	18"x13"x24"	10025750018
ESH-1100-10 kW Electric Strip	Fits HE-Z/HE-P/HE-B/HE/HV-100/101 BU, LV-120/140 BU	28	18"x13"x31"	10025110010
ESH-1100-15 kW Electric Strip	Fits HE-Z/HE-P/HE-B/HE/HV-100/101 BU, LV-120/140 BU	28	18"x13"x31"	10025110015
ESH-1100-18 kW Electric Strip	Fits HE-Z/HE-P/HE-B/HE/HV-100/101 BU, LV-120/140 BU	28	18"x13"x31"	10025110018
ESH-1100-20 kW Electric Strip	Fits HE-Z/HE-P/HE-B/HE/HV-100/101 BU, LV-120/140 BU	28	18"x13"x31"	10025110020
ESH-1100-23 kW Electric Strip	Fits HE-Z/HE-P/HE-B/HE/HV-100/101 BU, LV-120/140 BU	28	18"x13"x31"	10025110023
ESH-2500-10 kW Electric Strip	Fits HE-P-240/241 BU, LV-Z/LV-B-1750 BU	30	25"x13"x33"	10025250010
ESH-2500-15 kW Electric Strip	Fits HE-P-240/241 BU, LV-Z/LV-B-1750 BU	30	25"x13"x33"	10025250015
ESH-2500-20 kW Electric Strip	Fits HE-P-240/241 BU, LV-Z/LV-B-1750 BU	30	25"x13"x33"	10025250020
ESH-2500-25 kW Electric Strip	Fits HE-P-240/241 BU, LV-Z/LV-B-1750 BU	30	25"x13"x33"	10025250025

VESH Modulating Electrical Strip Heating Coil w/ SCR Controls for use with Zoned Units

NOTE: All ESH/VESH Coils require their own breaker



Part Name	Description	lbs	Ship. Dim.	Part Number
VESH-400-10 kW Electric Strip	Fits CU-31 BU	20	14"x13"x20"	10025404010
VESH-650-10 kW Electric Strip	Fits HE-Z-50/51 BU, CU-51 BU, LV-Z-750 BU	21	18"x13"x20"	10025654010
VESH-650-15 kW Electric Strip	Fits HE-Z-50/51 BU, LV-Z-750 BU	21	18"x13"x20"	10025654015
VESH-750-10 kW Electric Strip	Fits HE-Z-70/71 BU, LV-Z-1050 BU	21	18"x13"x20"	10025754010
VESH-750-18 kW Electric Strip	Fits HE-Z-70/71 BU, LV-Z-1050 BU	27	18"x13"x24"	10025754018
VESH-1100-10 kW Electric Strip	Fits HE-Z-100/101 BU	27	18"x13"x24"	10025114010
VESH-1100-18 kW Electric Strip	Fits HE-Z-100/101 BU	27	18"x13"x24"	10025114018
VESH-1100-23 kW Electric Strip	Fits HE-Z-100/101 BU	27	18"x13"x24"	10025114023
VESH-2500-10 kW Electric Strip	Fits HE-P-240/241 BU, LV-Z-1750 BU	30	25"x13"x33"	10025254010
VESH-2500-15 kW Electric Strip	Fits HE-P-240/241 BU, LV-Z-1750 BU	30	25"x13"x33"	10025254015
VESH-2500-20 kW Electric Strip	Fits HE-P-240/241 BU, LV-Z-1750 BU	30	25"x13"x33"	10025254020
VESH-2500-25 kW Electric Strip	Fits HE-P-240/241 BU, LV-Z-1750 BU	30	25"x13"x33"	10025254025

HVS Series Variable Speed Heat Pumps Inverter Drive Heat Pump



HVS-24



HVS-36



HVS-60

Part Name	Description	lbs	Ship. Dim.	Part Number
HVS-24 2-Ton Variable Speed Heat Pump	HVS-24 2-Ton Inverter Drive Condenser w/Interface Panel (7kW)	155	34"x18"x42"	40180400002
HVS-36 3-Ton Variable Speed Heat Pump	HVS-36 3-Ton Inverter Drive Condenser w/Interface Panel (10.5kW)	155	34"x18"x42"	40180400003
HVS-60 5-Ton Variable Speed Heat Pump	HVS-60 5-Ton Inverter Drive Condenser w/Interface Panel (17kW)	269	54"x18"x42"	40180400005

"I" Series Cooling Coils (For Use w/ Heat Pump)

RBM-I Series Refrigerant Base Module - For Use w/ HVS Heat Pump



**RBM-I
Cooling
Module**

Part Name	Description	lbs	Ship. Dim.	Part Number
RBM-I-50 Refrigerant Base Module	For use with HVS-24 2-Ton Heat Pump Fits HE-Z/HE-B/HE/HV-50/51, CU-51, LV-Z/LV-B-750, LV-50 (1.5 - 2 Ton)	35	37"x19"x23"	41090303050
RBM-I-70 Refrigerant Base Module	For use with HVS-36 3-Ton Heat Pump (Can also be used with HVS-24) Fits HE-Z/HE-B/HE/HV-70/71, LV-Z/LV-B/LV-E-1050, LV-70 (2.5 - 3 Ton)	45	37"x19"x23"	41090303070
RBM-I-100 Refrigerant Base Module	For use with HVS-60 5-Ton Heat Pump (Can also be used with HVS-24, HVS-36) Fits HE-Z/HE-P/HE-B/HE/HV-100/101 (3.5 - 5 Ton)	55	37"x19"x23"	41090303100

• RBM-I Refrigerant Base Modules come with drain pan and two 3/4" drain pan connections (primary/secondary), freeze stat, and two T-mounting brackets.

RCM-I Cooling Module - For Use w/ HVS Heat Pump



**RCM-I
Cooling
Module**

Part Name	Description	lbs	Ship. Dim.	Part Number
RCM-I-50 Cooling Module	For use with HVS-24 2-Ton Heat Pump Fits HE-Z/HE-B/HE/HV-50/51, CU-51, LV-Z/LV-B-750, LV-50 (1.5 - 2 Ton)	27	18"x11"x19"	10090203050
RCM-I-70 Cooling Module	For use with HVS-36 3-Ton Heat Pump (Can also be used with HVS-24) Fits HE-Z/HE-B/ HE/HV-70/71, LV-Z/LV-B/LV-E-1050, LV-70 (2.5 - 3 Ton)	34	23"x19"x11"	10090203070
RCM-I-100 Cooling Module	For use with HVS-60 5-Ton Heat Pump (Can also be used with HVS-24, HVS-36) Fits HE-Z/HE-P/HE-B/HE/HV-100/101 (3.5 - 5 Ton)	45	30"x11"x20"	10090203100

• RCM-I Refrigerant Base Modules come with drain pan and two 3/4" drain pan connections (primary/secondary), freeze stat, and two L-mounting brackets.

Flexible Duct



Assembled Flex Duct

Unassembled Flex Duct

HE Flexible Duct (Sold in Carton Quantities Only)



HE Flexible Duct

Part Name	Description	lbs	Ship. Dim.	Part Number
HE X 10' AFD R4.2 Flex (2)	Assembled HE Flex Duct R4.2 - Carton of 2 (1 skid = 36 cartons)	8	12"x13"x27"	20062010010
HE X 15' AFD R4.2 Flex (2)	Assembled HE Flex Duct R4.2 - Carton of 2 (1 skid = 25 cartons)	12	15"x15"x26"	20062010015
HE X 25' UFD R4.2 Flex (1)	Unassembled HE Flex Duct R4.2 - Carton of 1 (1 skid = 36 cartons)	8	12"x13"x26"	20062010025
HE X 10' AFD R8.4 Flex (1)	Assembled HE Flex Duct R8.4 - Carton of 1 (1 skid = 36 cartons)	8	10"x10"x27"	20062030010
HE X 15' AFD R8.4 Flex (1)	Assembled HE Flex Duct R8.4 - Carton of 1 (1 skid = 25 cartons)	12	15"x15"x25"	20062030015
HE X 25' UFD R8.4 Flex (1)	Unassembled HE Flex Duct R8.4 - Carton of 1 (1 skid = 18 cartons)	15	15"x15"x35"	20062030025

- HE AFD (Assembled Flex Duct) includes 10' or 15' of Flexible Duct, two Branch Couplers (attached), one Branch Take-Off with Gasket assembly, one Rough-In Boot, one Rough-In Cap, and one Plastic Vent Plate.
- HE UFD (Unassembled Flex Duct) includes 25' of Flexible Duct, 3 Branch Connector Tubes, 6 Branch Couplers and 6 tie wraps.

2" Flexible Duct (Sold in Carton Quantities Only)



2" Flexible Duct

Part Name	Description	lbs	Ship. Dim.	Part Number
2" X 10' AFD R4.2 Flex (4)	Assembled 2" Flex Duct R4.2 - Carton of 4 (1 skid = 25 cartons)	12	15"x15"x25"	20020120010
2" X 15' AFD R4.2 Flex (4)	Assembled 2" Flex Duct R4.2 - Carton of 4 (1 skid = 18 cartons)	18	15"x15"x35"	20020120015
2" X 25' UFD R4.2 Flex (1)	Unassembled 2" Flex Duct R4.2 - Carton of 1 (1 skid = 36 cartons)	8	12"x13"x27"	20020120025
2" X 10' AFD R8.4 Flex (2)	Assembled 2" Flex Duct R8.4 - Carton of 2 (1 skid = 25 cartons)	10	15"x15"x25"	20022120010
2" X 15' AFD R8.4 Flex (2)	Assembled 2" Flex Duct R8.4 - Carton of 2 (1 skid = 18 cartons)	15	15"x15"x35"	20022120015
2" X 25' UFD R8.4 Flex (1)	Unassembled 2" Flex Duct R8.4 - Carton of 1 (1 skid = 18 cartons)	12	15"x15"x35"	20022120025

- 2" AFD (Assembled Flex Duct) includes 10' or 15' of Flexible Duct, two Branch Couplers (attached), one Branch Take-Off with Gasket assembly, one Rough-In Kit, one Rough-In Cap, and one Plastic Vent Plate.
- 2" UFD (Unassembled Flex Duct) includes 25' of Flexible Duct, 3 Branch Connector Tubes, 6 Branch Couplers and 6 tie wraps.

Plenum Duct Insulsleeve



Insulsleeve

Part Name	Description	Part Number
6" X 10' Insulsleeve R4.2	Insulsleeve (R4.2) - Temporarily Unavailable	10020100610
8" X 10' Insulsleeve R4.2	Insulsleeve (R4.2) - Temporarily Unavailable	10020100810
10" X 10' Insulsleeve R4.2	Insulsleeve (R4.2) - Temporarily Unavailable	10020101010
6" X 10' Insulsleeve R8.4	Insulsleeve (R8.4) - Temporarily Unavailable	10022100610
8" X 10' Insulsleeve R8.4	Insulsleeve (R8.4) - Temporarily Unavailable	10022100810
10" X 10' Insulsleeve R8.4	Insulsleeve (R8.4) - Temporarily Unavailable	10022101010

- Insulsleeve is a R4.2 (2" insulation) or R8.4 (4" insulation) vapor barrier to be slid over 6", 8" or 10" rigid metal duct.

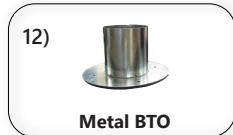
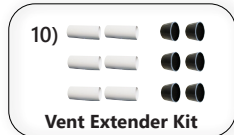
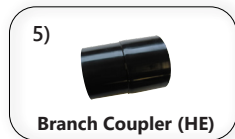
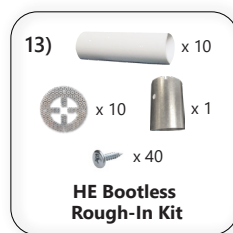
Flexible Duct Accessories

HE Duct Accessories

Pic #	Part Name	Description	Part Number
1)	HE AFD Kit	Rough-in Boot & Cap, White Plastic Vent Plate, Branch Take-Off (HE)	20072030011
2)	HE UFD Kit	3 Branch Connector Tubes, 6 Branch Couplers, 6 Cable Ties (HE)	20072030018
3)	HE Vent Plate Collar (4)	Vent Plate Collar (Extender) (HE - 4 per package)	40072030010
4)	HE Branch Take-Off	Branch Take-Off c/w Gasket (HE)	20072030004
5)	HE Branch Coupler (4)	Branch Coupler (HE - 4 per package)	40072030016
6)	HE Branch Connector Tube (4)	Branch Connector Tube (HE - 4 per package)	40072030012
6b)	HE Connector Tube - 20ft	4 ft Lengths, 5 per Bundle (HE)	20072030015
7)	HE Rough-In Kit	Rough-in Boot, Rough-in Cap (HE)	20072030007
8)	HE Rough-In Cap	Rough-In Cap (HE)	20072030006
9)	HE Rough-In Cap (Extended)	Rough-In Cap (2" Extended, Designed for Gypcrete Floors) (HE)	20072030014
10)	HE Vent Extender Kit (4)	Branch Connector Tube, Vent Plate Collar (HE - 4 per package)	40072030013
11)	Vent Plate Key	Universal Vent Plate Key (2" and HE)	20072030020
12)	HE Metal Branch Take-Off	Branch Take-Off for Flat-Sided Duct Applications (HE)	20072030019
13)	HE Bootless Rough-In Kit	Metal fitting for applications where HE Rough-In Boot will not fit (Each kit is for 10 applications - 10 6" lengths HE Tubes, 10 Bootless Metal Rough-In Plates, 40 screws and 1 Metal Plate Key.) Patent Pending	20072030021

2" Duct Accessories

Pic #	Part Name	Description	Part Number
1)	2" AFD Kit	Rough-in Boot & Cap, White Plastic Vent Plate, Branch Take-Off (2")	10020110002
2)	2" UFD Kit	3 Branch Connector Tubes, 6 Branch Couplers, 6 Cable Ties (2")	10020110004
3)	2" Vent Plate Collar (8)	Vent Plate Collar (Extender) (2" - 8 per package)	30020110107
4)	2" Branch Take-Off	Branch Take-Off c/w Gasket (2")	10020100106
5)	2" Branch Coupler (8)	Branch Coupler (2" - 8 per package)	30020110203
6)	2" Branch Connector Tube (8)	Branch Connector Tube (2" - 8 per package)	30020100004
7)	2" Rough-In Kit	Rough-In Boot, Rough-In Cap (2")	10020100100
8)	2" Rough-In Cap	Rough-In Cap (2")	10020110302
9)	2" Rough-In Cap (Extended)	Rough In Cap (2" Extended, Designed for Gypcrete Floors) (2")	10020110303
10)	2" Vent Extender Kit (6)	Branch Connector Tube, Vent Plate Collar (2" - 6 per package)	30020110304
11)	Vent Plate Key	Universal Vent Plate Key (2" and HE)	20072030020
12)	2" Metal Branch Take-Off	Branch Take-Off for Flat Sided Duct Applications (2")	30072030019



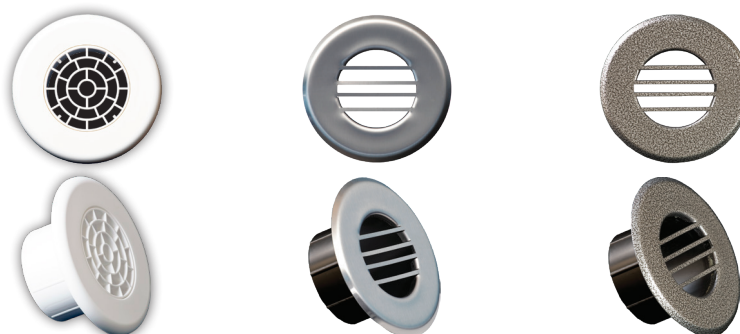
Notes:

Branch Couplers (#5) are attached to both ends of our flexible duct, for connecting to a Rough-In Boot (#7) at one end and a Branch Take-Off (#4) at the other. Two Couplers can also connect to one Branch Connector Tube (#6) to extend duct lengths. (To a maximum of 25')

Vent Extender Kits (#10) are used for thicker floor applications by attaching the Branch Connector Tube (#6) between the Vent Plate and the Vent Plate Collar (#3), which then connects to the Rough-In Boot/Vent Plate.

Vent Plates

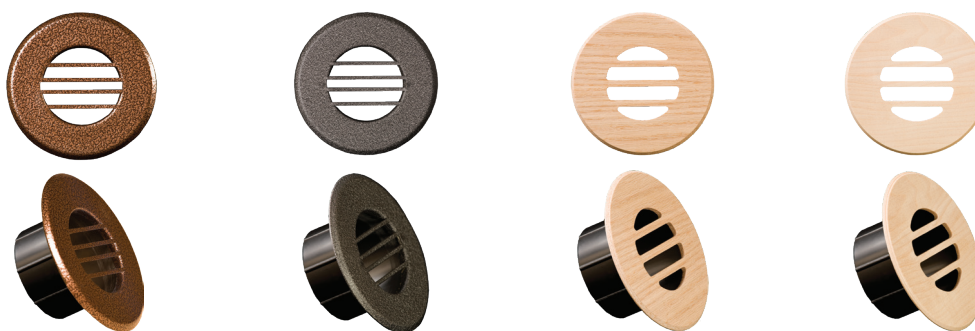
HE and 2" Decorative Vent Plates



White Plastic

Stainless Steel

Silver Vein



Copper Vein

Black Wrinkle

Unfinished Oak

Unfinished Maple

Our vent plates can be finished, painted, or even wallpapered to match their surroundings. (HE Vent Plates Shown)

HE Vent Plates (3" Collars and Vent Opening - 5" Cover Diameter)



Louvered Insert

(Available upon request to replace White Plastic Vent Plate Grid insert)

HE - 20072070012 (N/C)
2" - 20072070011 (N/C)

Part Name	Description	Part Number
HE White Plastic	White Plastic c/w Snap-In Grid Insert (HE)	20072070008
HE Stainless Steel	Stainless Steel Vent Plate (HE)	20071125011
HE Silver Vein	Silver Vein Vent Plate (HE)	20071125004
HE Copper Vein	Copper Vein Vent Plate (HE)	20071125003
HE Black Wrinkle	Black Wrinkle Vent Plate (HE)	20071125009
HE Unfinished Oak	Unfinished Oak Vent Plate (HE)	20070125001
HE Unfinished Maple	Unfinished Maple Vent Plate (HE)	20070125002
HE Louvered Insert	Available Upon Request	20072070012

2" Vent Plates (2" Collars and Vent Opening - 5" Cover Diameter)

2" Vent Plates are slightly different, shown below



Part Name	Description	Part Number
2" White Plastic	White Plastic c/w Snap-In Grid Insert (2")	20072070010
2" Stainless Steel	Stainless Steel Vent Plate (2")	20072070004
2" Silver Vein	Silver Vein Vent Plate (2")	20072070005
2" Copper Vein	Copper Vein Vent Plate (2")	20072070006
2" Black Wrinkle	Black Wrinkle Vent Plate (2")	20072070007
2" Unfinished Oak	Unfinished Oak Vent Plate (2")	10020110105
2" Unfinished Maple	Unfinished Maple Vent Plate (2")	10020110106
2" Louvered Insert	Available Upon Request	20072070011

Hi-Velocity Air Purification System

Hi-Velocity Air Purification System (HEPS)



**HEPS
HEPS-1750**

Part Name	Description	lbs	Ship. Dim.	Part Number
HEPS Air Purification System c/w Merv 13 Filter	In-Duct Hi-Velocity Air Purification System Fits HE-Z/HE-P/HE-B/HE/HV-50/70/100 LV-50/70/120/140, LV-Z/LV-B-750, LV-Z/LV-B/LV-E-1050	29	29"x21"x11"	20180100000
HEPS-1750 Air Purification System c/w Merv 13 Filter	In-Duct Hi-Velocity Air Purification System Fits HE-P 240/241, LV-Z/LV-B/LV-E-1750	39	32"x23"x14"	20180101750



MERV 13 Filter

Part Name	Description	Part Number
HEPS MERV 13 Filter	HEPS MERV 13 Replacement Filter - 15 ^{7/8} " x 24 ^{3/4} " x 3 ^{3/4} "	20180100015
HEPS-1750 MERV 13 Filter	HEPS-1750 MERV 13 Replacement Filter 20 ^{1/8} " x 24 ^{3/4} " x 3 ^{3/4} "	20180100012
Optional MERV 14 Filter	HEPS MERV 14 Replacement Filter (HEPS Only) 15 ^{7/8} " x 24 ^{3/4} " x 3 ^{3/4} "	20180100006



UV Lamps

Part Name	Description	Part Number
Replacement UV Lamps	HEPS Pkg of 2 UV Lamps for HEPS	20180100001



1 Yr Service Kit

Part Name	Description	Part Number
HEPS One Yr Srvc. Kit	HEPS - Two Merv 13 Filters and Two UV lamps	20180100007
HEPS-1750 One Yr Srvc. Kit	HEPS-1750 - Two Merv 13 Filters and Two UV lamps	20180100011



Electronic Lamp Ballast

Part Name	Description	Part Number
Electronic Lamp Ballast	HEPS Replacement Ballast	20180100003



Transformer

Part Name	Description	Part Number
12 Volt Transformer	HEPS Replacement Transformer	20180100004



Catalyst

Part Name	Description	Part Number
HEPS Catalyst	HEPS Replacement Titanium/Honeycomb Catalyst	20180100005
HEPS-1750 Catalyst	HEPS-1750 Replacement Titanium/Honeycomb Catalyst	20180100013

Portable Hi-Velocity Air Purification System (HEPS-P20)



HEPS-P20

Part Name	Description	lbs	Ship. Dim.	Part Number
HEPS-P20 Portable Air Purification System	Portable Hi-Velocity Air Purification System c/w Pre-Filter and Hepa Filter Cartridge	28	22"x20"x10"	20180100020



**Pre-Filter
and Hepa Filter**

Part Name	Description	Part Number
HEPS-P20 Filters Only (2)	Replacement Filter Set (Pre-Filter/Hepa Filter) for HEPS P-20	20180100021

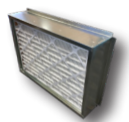


**UV
Lamp
Pre-Filter
and Hepa Filter**

Part Name	Description	Part Number
HEPS-P20 1 Yr Srvc. Kit	Replacement Filter Set and UV Lamp for HEPS P-20	20180100014

Parts / Accessories

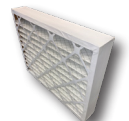
4" Filter Rack (Comes with Merv-13 Filter)



4" Filter Rack

Part Name	Description	Part Number
FR-4-50 Filter Rack (4")	Filter Rack w/ Filter (4" Merv-13) 14" x 18" x 4" HE-Z/HE-B/HE/HV-50/51, CU-51, LV-Z/LV-B-750, LV-50	10020240050
FR-4-70 Filter Rack (4")	Filter Rack w/ Filter (4" Merv-13) 19" x 18" x 4" HE-Z/HE-B/HE/HV-70/71, LV-Z/LV-B/LV-E-1050, LV-70	10020240070
FR-4-100 Filter Rack (4")	Filter Rack w/ Filter (4" Merv-13) 25" x 18" x 4" HE-Z/HE-P/HE-B/HE/HV-100/101, LV-120/140	10020240100

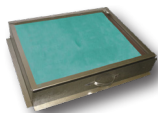
4" Replacement Filters (Merv-13)



4" Replacement Filter

Part Name	Description	Part Number
FR-4-50 Replacement Filter (4")	Replacement Filter (4" Merv-13) 14" x 18" x 4" HE-Z/HE-B/HE/HV-50/51, CU-51, LV-Z/LV-B-750, LV-50	10050940050
FR-4-70 Replacement Filter (4")	Replacement Filter (4" Merv-13) 19" x 18" x 4" HE-Z/HE-B/HE/HV-70/71, LV-Z/LV-B/LV-E-1050, LV-70	10050940070
FR-4-100 Replacement Filter (4")	Replacement Filter (4" Merv-13) 25" x 18" x 4" HE-Z/HE-P/HE-B/HE/HV-100/101, LV-120/140	10050940100

1" Filter Rack (Comes with Filter)



Standard Filter Rack

Part Name	Description	lbs	Ship. Dim.	Part Number
FR-31 Filter Rack (1")	Filter Rack w/ Filter (1") 13.5" x 14" x 1" - CU-31	4	17"x4"x20"	10020200031
FR-50 Filter Rack (1")	Filter Rack w/ Filter (1") 14" x 18" x 1" - HE-Z/ HE-B/HE/HV-50/51, LV-Z/LV-B-750, LV-50	4	17"x4"x20"	10020200050
FR-70 Filter Rack (1")	Filter Rack w/ Filter (1") 18" x 18" x 1" - HE-Z/ HE-B/HE/HV-70/71, LV-Z/LV-B/LV-E-1050, LV-70	5	21"x4"x22"	10020200070
FR-100 Filter Rack (1")	Filter Rack w/ Filter (1") 24" x 18" x 1" - HE-Z/ HE-P/HE-B/HE/HV-100/101, LV-120/140	7	20"x4"x28"	10020200100
FR-1750 Filter Rack (1")	Filter Rack w/ Filter (1") 24" x 26" x 1" HE-P-240/241, LV-Z/LV-B/LV-E-1750/1751	10	28"x5"x27"	20020201750

• Filters are 1 inch thick self sealing moisture resistant Merv 3 Filters, approximately 14% efficient.

1" Replacement Filters



1" Replacement Filter

Part Name	Description	Part Number
FR-31 Replacement Filter (1")	Replacement Filter (1") 13.5" x 14" x 1" CU-31	10050900031
JH Replacement Filter (1")	Replacement Filter (1") 14" x 14" x 1" JH-15/30	10050900030
FR-50 Replacement Filter (1")	Replacement Filter (1") 14" x 18" x 1" HE-Z/HE-B/HE/HV-50/51, LV-Z/LV-B-750, LV-50	10050900050
FR-70 Replacement Filter (1")	Replacement Filter (1") 18" x 18" x 1" HE-Z/HE-B/HE/HV-70/71, LV-Z/LV-B/LV-E-1050, LV-70	10050900070
FR-100 Replacement Filter (1")	Replacement Filter (1") 24" x 18" x 1" HE-Z/HE-P/HE-B/HE/HV-100/101, LV-120/140	10050900100
FR-1750 Replacement Fltr (1")	Replacement Filter (1") 24" x 26" x 1" HE-P-240/241, LV-Z/LV-B/LV-E-1750/1751, HV-140	10050900140

• Filters are 1 inch thick self sealing moisture resistant Merv 3 Filters, approximately 14% efficient.

Return Air Base



Return Air Base

Part Name	Description	lbs	Ship. Dim.	Part Number
RA-50 Return Air Base	Return Air Base - HE-Z/HE-B/HE/HV-50/51, CU-51, LV-Z/LV-B-750, LV-50	20	21"x5"x25"	40021200050
RA-70 Return Air Base	Return Air Base - HE-Z/HE-B/HE/HV-70/71, LV-Z/LV-B/LV-E-1050, LV-70	24	21"x5"x25"	40021200070
RA-100 Return Air Base	Return Air Base - HE-Z/HE-P/HE-B/HE HV-100/101, LV-120/140	27	25"x 5"x27"	40021200100
RA-1750 Return Air Base	Return Air Base - HE-P-240/241, LV-Z/LV-B/ LV-E-1750	33	26"x5"x28"	40021201750

• Return Air Bases are acoustically lined and require field assembly

Motors/Blowers

Variable Frequency Drive (VFD) Motors

Includes Motor Mounting Bracket



VFD Motor



Motor Mounting Bracket

Part Name	Description	Part Number
VFD Motor	HE-Z/HE-B/HE-50/51/70/71/100/101 VFD Motor (3/4 HP, 1650 RPM)	20160100000
LV-Z-1050 Motor	LV-Z/LV-E-1050 VFD Motor (1/3 HP, 1100 RPM)	20160101050
LV-Z-1750 Motor	LV-Z/LV-E-1750 VFD Motor (3/4 HP, 1100 RPM)	20160101750

Part Name	Description	Part Number
Motor Mounting Bracket	Fits all VFD & PSC Motors	30110100004

PSC Motors

Includes Capacitor and Motor Mounting Bracket



PSC Motor

Part Name	Description	Part Number
HV-50 Motor	HV-50/51/52 PSC Motor, (1/4 HP, 1625 RPM)	10031100050
HV-70 Motor	HV-70/71 PSC Motor (1/3 HP, 1625 RPM)	10031100070
HV-100/LV-140 Motor	HV-100/101 LV-140 PSC Motor (1/2 HP, 1625 RPM)	10031100100
HV-140 Motor	HV-140 PSC Motor (3/4 HP, 1625 RPM)	10031100140
LV-50/70/120 Motor	LV-50/70/120 PSC Motor (1/3 HP, 1075 RPM)	10030200050

Part Name	Description	Part Number
JH-15 Motor & Blower	Motor & Blower Assembly (JH-15)	10030600015
JH-30 Motor & Blower	Motor & Blower Assembly (JH-30)	10030600030

Blowers*

* ALWAYS provide blower part number (or unit serial number) when ordering replacement, to ensure correct sizing.



Blower

Part Name	Description	Part Number
DC 9-4 (50/52) Blower	HE-Z/HE-B/HE-50/51/52, LV-Z/LV-B-750 Blower	20150100050
DCT 10-4 (50) Blower	HV-50/51, LV-50 Blower	10030500050
DC 9-7 (70) Blower	HE-Z/HE-B/HE/HV-70/71, LV-70 Blower	20150100070
DC 9-9 (100/1050) Blower	HE-Z/HE-B/HE/HV-100/101, LV-120/140, LV-Z/LV-B/LV-E-1050 Blwr	20150100101
DC 10-10 (1750) Blower	LV-Z/LV-B/LV-E-1750 Blower	20150301750
DCT 10-7 (140) Blower	HV-140 Blower	10031500140

Backward Curved Fans



HE-P Motor & Blower Assembly

Part Name	Description	Part Number
CU-31/51 Backward Curved Fan	Motor & Blower Assembly for CU-31, CU-51 Air Handler	20170100051
HE-P-100 Backward Curved Fan	Motor & Blower Assembly for HE-P-100 Air Handler	20170100100
HE-P-240 Backward Curved Fan	Motor & Blower Assembly for HE-P-240 Air Handler	20170100200

Parts / Accessories

Electrical Components



PSB Circuit Board



HEB Circuit Board



PSC Circuit Board



VFD Transformer



PSC Transformer



Rheostat



Capacitor



Slo-Blo Fuse



HE-Z/LV-Z
Electrical Box



WEG Controller



Damper
Actuator



Turbo Meter

Part Name	Description	Part Number
PSB Circuit Board	Circuit Board for HE-Z, CU-EC, LV-Z Air Handlers Board Identifier: L564AZ.FLA	40120100001
HEP Circuit Board	Circuit Board for HE-P Air Handlers	40120100014
HEB Circuit Board	Circuit Board for HE-B, LV-B Air Handlers Board Identifier: L579A1.FLA	40120500001
PSC Circuit Board	Circuit Board for Air Handlers with PSC Motors (HV/LV) Board Identifier: L176EO.FLA	10020500010

Part Name	Description	Part Number
VFD Transformer	Transformer for Air Handlers with VFD Motors (HE-Z/HE-B/HE/LV-Z/LV-B/LV-E Units)	20120100030
PSC Transformer	Transformer for Air Handlers with PSC Motors (HV/LV Units)	10020500030
5 AMP Rheostat	5 AMP Rheostat (HV/LV Units)	10020400005
10 AMP Rheostat	10 AMP Rheostat (HV/LV Units)	10020400010

Part Name	Description	Part Number
HV-50 Capacitor	Motor Capacitor (HV-50/51 Motor, LV-50/70/120 Motor)	10030300050
HV-70/100/140 Capacitor	Motor Capacitor (HV-70/71/100/101/140 Motor, LV-140 Motor)	10030300140
Slo-blo Fuse	2 Amp 250v Slo-blo Fuse (PSC Circuit Boards)	10020500040

WEG Control Box Upgrades

Please note: This electrical box is for upgrading previously released HE & LV-E Air Handlers. Model and voltage required.

Part Name	Description	lbs	Ship. Dim.	Part Number
HE-Z Electrical Box w/ 110v WEG Controller	For HE/HE-Z-50/51/70/71/100/101 LV-E-1050 Units (110v power)	12	19"x15"x6"	40120100004
HE-Z Electrical Box w/ 220v WEG Controller	For HE-50/51/70/71/100/101 LV-E-1050 Units (220v power)			40120100005

Part Name	Description	lbs	Ship. Dim.	Part Number
LV-Z-1750 Electrical Box w/ 110v WEG Controller	For LV-E-1750 Units (110v power)	12	19"x15"x6"	40120100003
LV-Z-1750 Electrical Box w/ 220v WEG Controller	For LV-E-1750 Units (220v power)			40120100002

WEG Control Only

Part Name	Description	Part Number
110v WEG Controller Only	110v WEG - Controller Only	40120100007
220v WEG Controller Only	220v WEG - Controller Only	40120100008

Zoning Package Components

Part Name	Description	Part Number
Damper Actuator	Replacement Damper Actuator Motor	40120202001
Zoning Control - 2/3 Zone	Replacement Zoning Control for 2 & 3 Zone Air Handlers	40120202002
Zoning Control - 4 Zone	Replacement Zoning Control for 4 Zone Air Handlers	40120202004
Zoning Damper Blade - 6"	6" Damper Blade Replacement for Zoning Air Handlers	40120202006
Zoning Damper Blade - 8"	8" Damper Blade Replacement for Zoning Air Handlers	40120202008
Zoning Damper Blade - 10"	10" Damper Blade Replacement for Zoning Air Handlers	40120202010
Outside Air Sensor	Outside Air Sensor for Zoning Control	40120202005

Miscellaneous Items

Part Name	Description	Part Number
Turbo Meter	Turbo Meter (Measures Air Flow for Hi-Velocity Air Handlers)	20190000000
Wooden Vent Plate Display	Vent Plate Display including 8 Decorative Vent Plates	20190000001

Parts / Accessories

Refrigerant Accessories

R-410a Thermal Expansion Valves (Heat Pump Ready)

Part Name	Description	Part Number
2.0 Ton TX Valve	2.0 Ton Thermal Expansion Valve (R-410a)	10040101420
3.0 Ton TX Valve	3.0 Ton Thermal Expansion Valve (R-410a)	10040101430
4.0 Ton TX Valve	4.0 Ton Thermal Expansion Valve (R-410a)	10040101440
5.0 Ton TX Valve	5.0 Ton Thermal Expansion Valve (R-410a)	10040101450



R-410A TX Valve



R-22 TX Valve



Bi-Flow Receiver



Fixed Temp Freeze Stat



Sweat Site Glass (3/8")



RPM-E Drain Pan

R-22 Thermal Expansion Valves (Heat Pump Ready)

Part Name	Description	Part Number
2.0 Ton TX Valve	2.0 Ton Thermal Expansion Valve (R-22)	10040100120
3.0 Ton TX Valve	3.0 Ton Thermal Expansion Valve (R-22)	10040100130
4.0/5.0 Ton TX Valve	4.0/5.0 Ton Thermal Expansion Valve (R-22)	10040100140

Part Name	Description	Part Number
Bi-Flow Receiver	Bi-Flow Add-on for Heat Pump Applications	30180200001
Fixed Temp Freeze Stat	Fixed Temp Freeze Stat (for use w/ RBM/RPM-E/RCM/RM units)	10040500010
3/8" Sweat Site Glass	3/8" Sweat Site Glass	10040200438

Part Name	Description	Part Number
RBM-50 Drain Pan	Replacement SS Drain Pan for RBM/RBM-I-50	20090500050
RBM-70 Drain Pan	Replacement SS Drain Pan for RBM/RBM-I-70	20090500070
RBM-100 Drain Pan	Replacement SS Drain Pan for RBM/RBM-I-100	20090500100

Part Name	Description	Part Number
RPM-E-50 Drain Pan	Replacement SS Drain Pan for RPM-E-50	20090300050
RPM-E-70 Drain Pan	Replacement SS Drain Pan for RPM-E-70	20090300070
RPM-E-100 Drain Pan	Replacement SS Drain Pan for RPM-E-100	20090300100

Part Name	Description	Part Number
RCM-50 Drain Pan	Replacement Drain Pan & 2 pc. door for RCM/RCM-I/WCM-50	20090100050
RCM-70 Drain Pan	Replacement Drain Pan & 2 pc. door for RCM/RCM-I/WCM-70	20090100070
RCM-100 Drain Pan	Replacement Drain Pan & 2 pc. door for RCM/RCM-I/WCM-100	20090100101
RM-100 Drain Pan	Replacement Casing (w/ Built-In Drain Pan) fits RM-100	20090100100

ESH/VESH Components

Part Name	Description	Part Number
ESH/VESH Auto Cut-Out	Automatic Reset Cut-Out for ESH/VESH Coil	10055000008
ESH/VESH Relay 30A/24VAC	Relay 30A/24VAC for Electric Strip Heating Coil	10055000002
ESH/VESH Jumper Bar Assembly	Jumper Bar for ESH/VESH Electric Strip Heating Coil	10055000005
ESH/VESH Door Only	Replacement Door for Electric Strip Heating Coil (ESH/VESH)	10055000006
ESH Heating Element (5 kW)	Repl. ESH Element, c/w 2 Porcelain Pieces	10055000003
ESH Porcelain Pieces Only	Repl. Porcelain Pieces for Electric Strip Heating Coil	10055000004
ESH Sequencer TH-34	Sequencer-TH-34 for Electric Strip Heating Coil	10055000001
VESH Sequencer TH-600	Sequencer TH-600 for Modulating Electric Strip Heating Coil	10055000007
VESH Duct Sensor DS-600	Duct Sensor DS-600 for Modulation Electric Strip Heating Coil	10055000009

CU/LV-Z/LV/JH Components

Part Name	Description	Part Number
1/2" Non-Elec. Valve Body	1/2" Non-Electric Valve Body (CU-31, JH Series)	10051000012
3/4" Non-Electric Valve Body	3/4" Non-Electric Valve Body (LV-Z/LV Series)	10051000034
1" Non-Electric Valve Body	1" Non-Electric Valve Body (LV-Z/LV Series)	10051000010
Air Sensor for Valve Body	Air Sensor for Above (CU, LV, JH Series)	10051000001
Low Ambient Cut-Out	Low Ambient Cut-Out (CU, LV, JH NP Series)	10040500030
JH F/A Damper Section	Fresh Air Damper Section (JH Series)	10012401530
JH Damper Motor	Damper Motor (JH Series)	10050300100



Fresh Air Damper (JH)



Low Ambient Cut-Out

HVS Heat Pump Components

Part Name	Description	Part Number
HVS Interface Panel	Interface Panel for HVS Heat Pump	40180100001
HVS Outdoor Control Board	Main Outdoor Control Board for HVS-36 Heat Pump	40180100003
HVS Outdoor Control Board	Main Outdoor Control Board for HVS-60 Heat Pump	40180100002

HE-Z Builders Series

HE-Z Builders Series Air Handler with 110v WEG - Zoning Capable

For Multi Unit applications ONLY, factory approval required for order acceptance

Part Name	Description	lbs	Ship. Dim.	Part Number
HE-Z-51-H-110v	110v Heating Unit w/ VFD Motor - Builders Series	86	37"x19"x17"	41021400051
HE-Z-71-H-110v	110v Heating Unit w/ VFD Motor - Builders Series	99	37"x19"x23"	41021400071
HE-Z-101-H-110v	110v Heating Unit w/ VFD Motor - Builders Series	121	37"x19"x29"	41021400101
HE-Z-51-BU-110v	110v Blower Unit w/ VFD Motor - Builders Series	69	37"x19"x17"	41021200051
HE-Z-71-BU-110v	110v Blower Unit w/ VFD Motor - Builders Series	77	37"x19"x23"	41021200071
HE-Z-101-BU-110v	110v Blower Unit w/ VFD Motor - Builders Series	92	37"x19"x29"	41021200101

HE-Z Builders Series Air Handler with 220v WEG - Zoning Capable

For Multi Unit applications ONLY, factory approval required for order acceptance

Part Name	Description	lbs	Ship. Dim.	Part Number
HE-Z-51-H-220v	220v Heating Unit w/ VFD Motor - Builders Series	86	37"x19"x17"	41020400051
HE-Z-71-H-220v	220v Heating Unit w/ VFD Motor - Builders Series	99	37"x19"x23"	41020400071
HE-Z-101-H-220v	220v Heating Unit w/ VFD Motor - Builders Series	121	37"x19"x29"	41020400101
HE-Z-51-BU-220v	220v Blower Unit w/ VFD Motor - Builders Series	69	37"x19"x17"	41020200051
HE-Z-71-BU-220v	220v Blower Unit w/ VFD Motor - Builders Series	77	37"x19"x23"	41020200071
HE-Z-101-BU-220v	220v Blower Unit w/ VFD Motor - Builders Series	92	37"x19"x29"	41020200101

• All HE-Z Builders Units come with galvanized cabinet, Variable Frequency Drive Motor, pre-wired circuit board and WEG Controls pre-installed. Packaged with one universal vent plate key. Heating (H) Units come with HWC water coils installed.



HE-Z (H) Builders Series Air Handler

HE-B Builders Series

HE-B Builders Series Air Handler w 110v WEG - Non-Zoning

For Multi Unit applications ONLY, factory approval required for order acceptance

Part Name	Description	lbs	Ship. Dim.	Part Number
HE-B-51-H-110v	110v Heating Unit w/ VFD Motor - Builders Series	86	37"x19"x17"	41021600051
HE-B-71-H-110v	110v Heating Unit w/ VFD Motor - Builders Series	99	37"x19"x23"	41021600071
HE-B-101-H-110v	110v Heating Unit w/ VFD Motor - Builders Series	121	37"x19"x29"	41021600101
HE-B-51-BU-110v	110v Blower Unit w/ VFD Motor - Builders Series	69	37"x19"x17"	41020700051
HE-B-71-BU-110v	110v Blower Unit w/ VFD Motor - Builders Series	77	37"x19"x23"	41020700071
HE-B-101-BU-110v	110v Blower Unit w/ VFD Motor - Builders Series	92	37"x19"x29"	41020700101

HE-B Builders Series Air Handler w 220v WEG - Non-Zoning

For Multi Unit applications ONLY, factory approval required for order acceptance

Part Name	Description	lbs	Ship. Dim.	Part Number
HE-B-51-H-220v	220v Heating Unit w/ VFD Motor - Builders Series	86	37"x19"x17"	41020800051
HE-B-71-H-220v	220v Heating Unit w/ VFD Motor - Builders Series	99	37"x19"x23"	41020800071
HE-B-101-H-220v	220v Heating Unit w/ VFD Motor - Builders Series	121	37"x19"x29"	41020800101
HE-B-51-BU-220v	220v Blower Unit w/ VFD Motor - Builders Series	69	37"x19"x17"	41021800051
HE-B-71-BU-220v	220v Blower Unit w/ VFD Motor - Builders Series	77	37"x19"x23"	41021800071
HE-B-101-BU-220v	220v Blower Unit w/ VFD Motor - Builders Series	92	37"x19"x29"	41021800101

• All HE-B Builders Units come with galvanized cabinet, Variable Frequency Drive Motor, pre-wired HEB circuit board and WEG Controls pre-installed. Packaged with one universal vent plate key. Heating (H) Units come with HWC water coils installed.



HE-B (H) Builders Series Air Handler

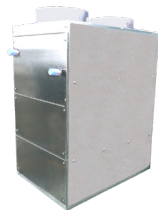
HE-B Control Box Upgrades

Please note: This electrical box is for upgrading previously released HE Builders Series Units. Model and voltage required.

Part Name	Description	lbs	Ship. Dim.	Part Number	
HE-B-52 Electrical Box w/ 110v WEG Controller	For HE-52 Units (110v power)	12	19"x15"x6"	40120100052	
HE-B Electrical Box w/ 110v WEG Controller	HE/HE-B-51/71/101 Units (110v power)	WEG Non-Zoning Controller, HEB Circuit Board, Transformer in Galvanized Box	12	19"x15"x6"	40120500101
HE-B Electrical Box w/ 220v WEG Controller	For HE/HE-B-51/71/101 Units (220v power)		12	19"x15"x6"	40120502101

Hi-Velocity HE-P Builders Series

HE-P Builders Series Air Handler w/ Backward Curved Fan - 220v



HE-P-240 (H) Builders Series Air Handler

For Multi Unit applications ONLY, factory approval required for order acceptance

Part Name	Description	lbs	Ship. Dim.	Part Number
HE-P-241-H-220v	220v Heating Unit w/ Backward Curved Fan - Builders	152	42"x30"x26"	42010400241
HE-P-241-BU-220v	220v Blower Unit w/ Backward Curved Fan - Builders	107	42"x30"x26"	42010200241

• HE-P Builders Series Units come complete with galvanized insulated cabinet, EC motor & blower assembly, and factory pre-wired HEP circuit board. Packaged with one universal vent plate key. Heating (H) Units come with HWC water coils installed. HE-P-241 Air Handlers come with 2 supply outlets.

HE-P Builders Series Air Handler Zoning Package - 220v

Zoning packages include HE-P Air Handler complete with pre-wired zone panel and 2, 3 or 4 collars, each with power open/close dampers and actuators pre-installed.

Part Name	Description	lbs	Ship. Dim.	Part Number
HE-P-241-H-220v-Z2	220v Heating Unit w Backward Curved Fan - c/w Two 10" Collars - Bldrs	159	46"x30"x26"	44010420241
HE-P-241-H-220v-Z3	220v Heating Unit w Backward Curved Fan - c/w Three 10" Collars - Bldrs	160	46"x30"x26"	44010430241
HE-P-241-H-220v-Z4	220v Heating Unit w Backward Curved Fan - c/w Four 10" Collars - Bldrs	161	46"x30"x26"	44010440241
HE-P-241-BU-220v-Z2	220v Blower Unit w Backward Curved Fan - c/w Two 10" Collars - Bldrs	114	46"x30"x26"	44010220241
HE-P-241-BU-220v-Z3	220v Blower Unit w Backward Curved Fan - c/w Three 10" Collars - Bldrs	115	46"x30"x26"	44010230241
HE-P-241-BU-220v-Z4	220v Blower Unit w Backward Curved Fan - c/w Four 10" Collars - Bldrs	116	46"x30"x26"	44010240241

• HE-P Builders Series with Zoning Package comes complete with galvanized insulated cabinet & fan, EC motor & blower assembly, and factory pre-wired HEP circuit board. Packaged with one universal vent plate key. Heating (H) Units come with HWC water coils installed. Zoning package includes pre-wired zone panel and 2, 3 or 4 collars, each with power open/close dampers and actuators pre-installed.

Assembled Flexible Duct (Sold in Carton Quantities Only)

Available for use with Builders Series Units ONLY. For 10' and 15' Flex Duct, refer to standard Flex section.



2" Flexible Duct

Part Name	Description	lbs	Ship. Dim.	Part Number
2" X 5' AFD R4.2 (4) Flex	Assembled 2" Flex Duct R4.2 - Carton of 4	8	27"x12"x13"	20020100005
2" X 5' AFD R8.4 (2) Flex	Assembled 2" Flex Duct R8.4 - Carton of 2	8	26"x10"x10"	20022100005



HE Flexible Duct

HE X 5' AFD R4.2 (4) Flex	Assembled HE Flex Duct R4.2 - Carton of 4	16	25"x15"x15"	20062010005
HE X 5' AFD R8.4 (2) Flex	Assembled HE Flex Duct R8.4 - Carton of 2	10	25"x15"x15"	20062030005

• AFD Assembled Flex Duct includes 5', 10' or 15' of Flexible Duct, two Branch Couplers (attached), one Branch Take-Off with Gasket assembly, one Rough-In Kit, one Rough-In Cap and one Plastic Vent Plate.

LV-B Builders Series

LV-B Builders Series Air Handler - 110v - Non-Zoning

Part Name	Description	lbs	Ship. Dim.	Part Number
LV-B-751-H-110v	110v Heating Unit w/ VFD Motor - Builders Series	80	37"x19"x17"	41021200751
LV-B-1051-H-110v	110v Heating Unit w/ VFD Motor - Builders Series	93	37"x28"x19"	41021201051
LV-B-1751-H-110v	110v Heating Unit w/ VFD Motor - Builders Series	152	42"x30"x26"	41021201751
LV-B-751-BU-110v	110v Blower Unit w/ VFD Motor - Builders Series	63	37"x19"x17"	41015500751
LV-B-1051-BU-110v	110v Blower Unit w/ VFD Motor - Builders Series	71	37"x28"x19"	41015501051
LV-B-1751-BU-110v	110v Blower Unit w/ VFD Motor - Builders Series	107	42"x30"x26"	41015501751

LV-B Builders Series Air Handler - 220v - Non-Zoning

Part Name	Description	lbs	Ship. Dim.	Part Number
LV-B-751-H-220v	220v Heating Unit w/ VFD Motor - Builders Series	80	37"x19"x17"	41011600751
LV-B-1051-H-220v	220v Heating Unit w/ VFD Motor - Builders Series	93	37"x28"x19"	41011601051
LV-B-1751-H-220v	220v Heating Unit w/ VFD Motor - Builders Series	152	42"x30"x26"	41011601751
LV-B-751-BU-220v	220v Blower Unit w/ VFD Motor - Builders Series	63	37"x19"x17"	41016600751
LV-B-1051-BU-220v	220v Blower Unit w/ VFD Motor - Builders Series	71	37"x28"x19"	41016601051
LV-B-1751-BU-220v	220v Blower Unit w/ VFD Motor - Builders Series	107	42"x30"x26"	41016601751

• LV-B Builders Units come complete with galvanized insulated cabinet & fan, Variable Frequency Drive Motor, pre-wired HE-B circuit board and WEG Controls pre-installed. Heating (H) Units come with HWC water coils installed.

WARRANTY

Energy Saving Products Ltd. is proud to offer a limited warranty. This warranty applies strictly to the first purchaser at wholesale level and only to the Air Handler unit and module. It does not include connections, attachments and other products or materials furnished by the installer.

This warranty excludes any damages caused by changes, relocation to, or installation in a new site. This warranty does not cover any defects caused by failure to follow the installation and operating instructions furnished with the Air Handler. This warranty does not cover defects caused by failing to adhere to local building codes and following good industry standards. Failure to correctly install the Air Handler, or material related to the unit, may result in improper system performance and/or damages and will void this warranty. This warranty does not cover material installed in or exposed to a corrosive environment. This warranty does not cover products subjected to abnormal use, misuse, improper maintenance, or alteration of the product. Using the Air Handler and/or module as a source of temporary heating/cooling during construction will void this warranty.

A Five (5) Year Limited Warranty is extended on all components in products manufactured exclusively by Energy Saving Products. These components include Motors, WEG Controller, Circuit Boards, Dampers, Zoning Controls, Blowers, Motor & Blower Assemblies, Heating Coils, Chilled Water Coils, and Air Conditioning Coils. Note: If any product is installed in or exposed to a corrosive environment, warranty will be void.

A Three (3) Year Limited Warranty is extended on Electric Strip Heaters.

A One (1) Year Limited Warranty is extended on replacement parts.

Products sold by Energy Saving Products but manufactured by others, will carry the original manufacturer's warranty.

TERMS & CONDITIONS

- **Warranty will not be considered unless a contractor has contacted Energy Saving Products Ltd. Technical Support department for assistance, and received a tech code.**
- Any repair performed under warranty must be approved by Energy Saving Products Ltd. for this warranty to be valid.
- The liability of Energy Saving Products Ltd. is limited to and shall not exceed the cost of pre-approved replacement parts.
- This warranty does not cover shipping costs to and from the factory, labor costs or any other cost associated with the installation of the replacement part.
- Inoperative parts must be returned to Energy Saving Products Ltd. with an ESP RMA Form that includes model, serial number, and a detailed description of the entire problem. Inoperative parts must be returned in testable condition.
- Energy Saving Products Ltd. is not liable for any other damages, personal injury, or any other losses of any nature.

Follow these steps for Service or Repair:

1. Contact the installer of the product or a licensed service company
2. Contact the distributor
3. Contact Energy Saving Products Ltd. Mon-Fri 8 am – 4:30 pm MT 1-888-652-2219

This warranty replaces all other warranties expressed or implied.

www.hi-velocity.com

Energy Saving Products Ltd, established in 1983, manufactures the Hi-Velocity Systems™ product line for residential, commercial and multi-family markets. Our facilities house Administration, Sales, Design, Manufacturing, as well as Research & Development complete with an in-house test lab. Energy Saving Products prides itself on Customer Service and provides design services and contractor support.

For all of your Heating, Cooling and Indoor Air Quality needs, the Hi-Velocity System is the right choice for you!



Small Duct Heating, Cooling and IAQ Systems

Build Smart, Breathe *Easy*

Hi-Velocity HE-Z Air Handlers, *Green* Technology



Phone: 780-453-2093
Fax: 780-453-1932
Toll Free: 1-888-652-2219

www.hi-velocity.com