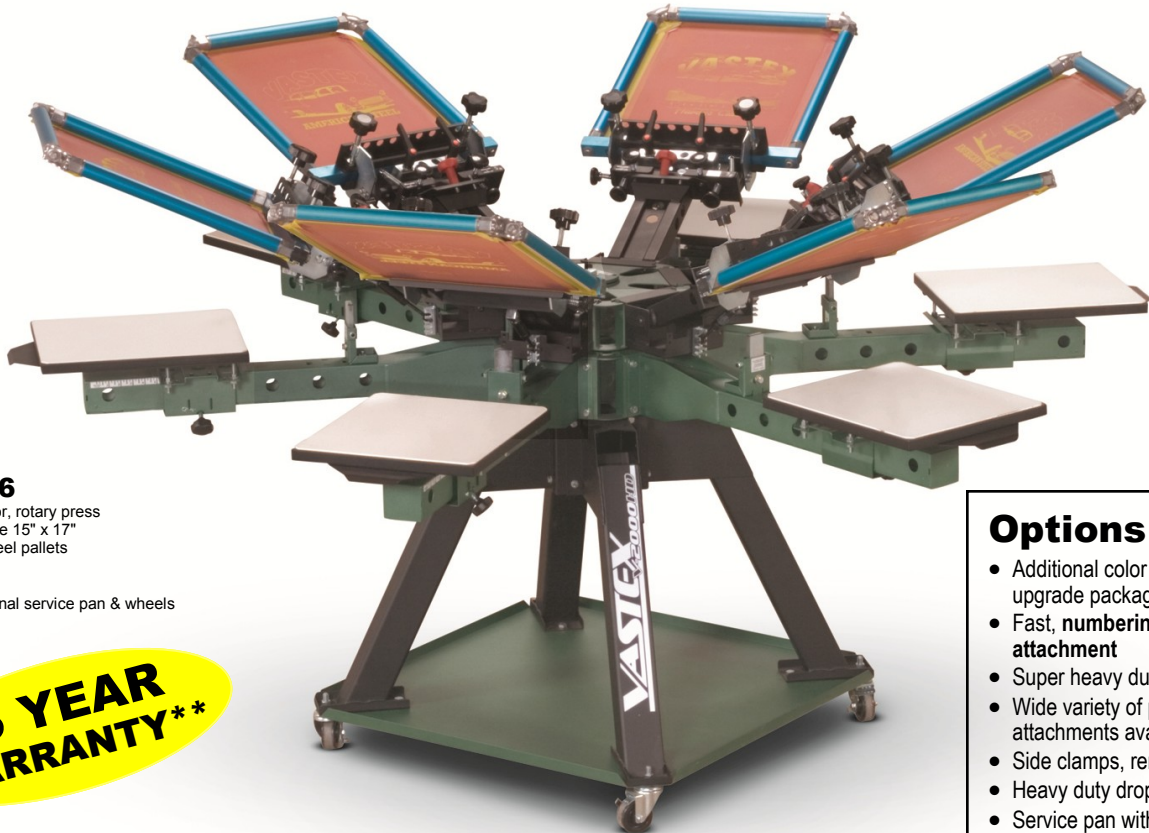


# PREMIUM MANUAL SCREEN PRINTERS

## V-2000HD



### V2HD-66

6 station, 6 color, rotary press  
w/ Standard size 15" x 17"  
(38 x 43 cm) steel pallets

Shown w/ optional service pan & wheels  
VSP-WS

**25 YEAR WARRANTY\*\***

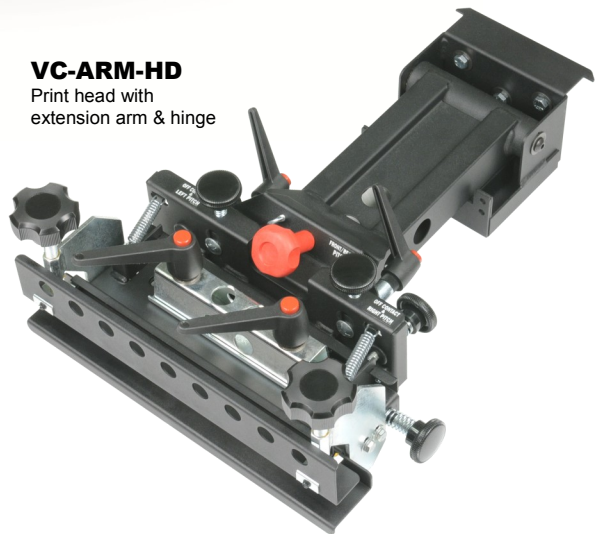
- ### Options
- Additional color and station upgrade packages
  - Fast, numbering system attachment
  - Super heavy duty print arms
  - Wide variety of pallets and attachments available
  - Side clamps, removable or fixed
  - Heavy duty drop-down wheels
  - Service pan with locking wheels

Shown with optional service pan and wheel set

## V-2000HD features

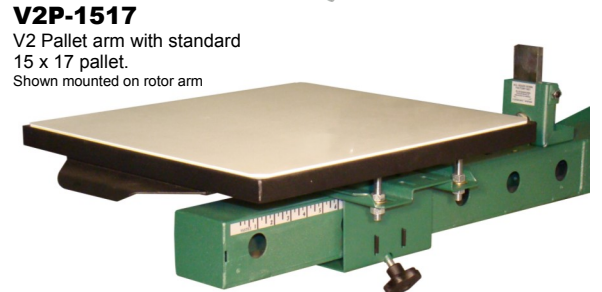
- RELIABLE** 25 Year Warranty
- HEAVY DUTY** *Never warp steel pallets* with rubber tops and *corner clamp pallet arm*
- USER FRIENDLY** 100% wrench free adjustments
- ADJUSTABLE** 6 way screen leveling
- PRECISE** Holds accurate multicolor printing registration
- ACCURATE** Embedded registration bearings (close to the screen, stays clear of spray tack)
- FLEXIBLE** *Prints all heads down*
- SMART** Gas lifters with 16 position variable lift strength
- STRONG** 12" (30 cm) wide steel rear screen clamps joined by a steel clamp bar for off center clamping & 2.75" (6.9 cm) precision ground center shaft
- DURABLE** 3" (7.6 cm) square steel rotor arm with ruler indicator
- INNOVATIVE** Elevated Pallets—no need to stretch shirts over the arm (also compatible with quick stretch jacket attachment)
- EXCLUSIVE** Zero backlash bearings on screen arm pivot
- CONVENIENT** Adjustable micro clamp levers
- EXPANDABLE** Upgrade at any time from 1 station 1 color tabletop to 10 station 10 color rotary floor press!

Tabletop models available.



### VC-ARM-HD

Print head with extension arm & hinge



### V2P-1517

V2 Pallet arm with standard 15 x 17 pallet.  
Shown mounted on rotor arm

\*\*25 year limited warranty. Gas springs and rubber pallet tops covered for 3 years.

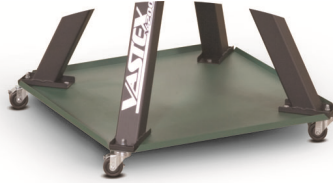


# PALLETS & ACCESSORIES

Vastex, quality made in the U.S.A. since 1960



**WS-VHD:** Heavy Duty "Drop-Down" wheels for all V-2000 presses. Only raises press 3/4" off the floor.



**VSP-WS:** Service Pan and Wheel Set for any V-2000HD Press



**V1SP-WS:** Service Pan and Wheel Set for any V-1000 Press

## All Over Pallet, up to XL shirts (V2P-AOP-XL)



All over pallet is available separately to mount to your V-2000 press, or mounted on a standalone 1 station press! (Shown on right)

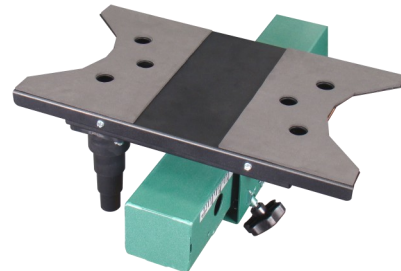


## Vacuum Pallet (VAC120-1824 / VAC-1824)



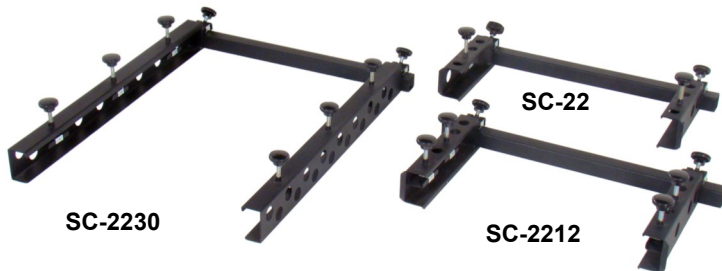
The Vacuum Pallet is available as self powered (V2-VAC120-1824) or for use with customer supplied shop vac. (V2-VAC-1824)

## Under Brim Vacuum Pallet (VAC-J-BRIM w/ V2-ARM-M)



The attachment allows for printing under two flat brim hats at once with the use of a customer supplied shop vac.

## Side Clamps



## Hat Printing Attachment\*

Available with different cap pallets



Hat Package fits V-2000 (V2C-CPB) or V-1000(V1C-CPB)  
3 different style Plattens to choose from!

**Custom Pallets Available!**

Download our Pallet Spec Book for dimensions and additional products.  
**WWW.VASTEX.COM**





# PALLETS & ACCESSORIES

Vastex, quality made in the U.S.A. since 1960

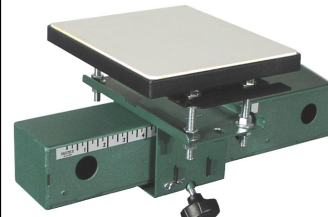
## Standard Shirt Plattens



Custom Sizes Available

- 10.5" x 17"
- 12" x 20"
- 12" x 30"
- 13" x 8.5"
- 13" x 11.5"
- 13.5" x 11.5"
- 13.5" x 17"
- 14" x 14"
- 15" x 17"
- 16" x 20"
- 16" x 24"
- 17" x 21"
- 18" x 30"
- 20" x 24"
- 20" x 30"
- 22" x 32"
- 24" x 48"
- 26" x 20"
- 27" x 32"
- 48" x 40"

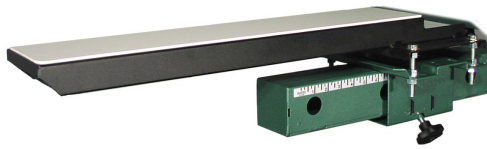
## Mini Pallets



Quick Stretch Available!

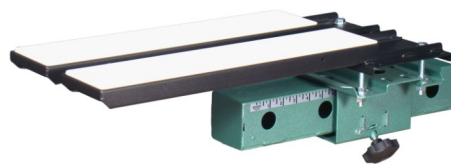
- 6" x 6"
- 9" x 8"

## Long Sleeve and Leg Pallets



- 2.5" x 14"
- 4" x 19"
- 5" x 19"
- 6" x 19"
- 5" x 24"
- 6" x 24"
- 2 5/8" x 26"

## Double Long Sleeve Pallets



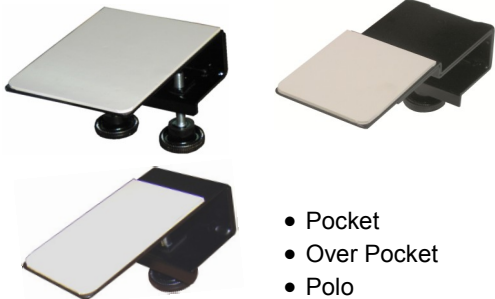
- 4" x 19"
- 5" x 19"

## Short Sleeve and Leg Pallets



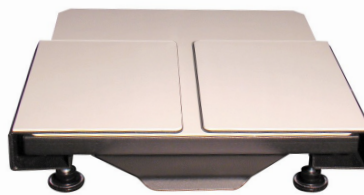
- 3" x 9"
- 4" x 9"
- 5" x 9"
- 6" x 9" (Short Leg)

## Clamp on Pallet Adapters



- Pocket
- Over Pocket
- Polo

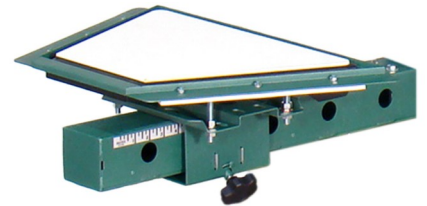
## Zipper Attachments



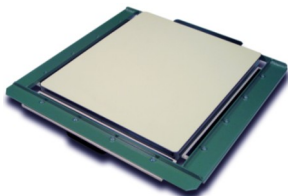
- 11" x 7.5"
- 16" x 7.5"

Sold in Pairs

## Umbrella Pallet w/ Quick stretch.

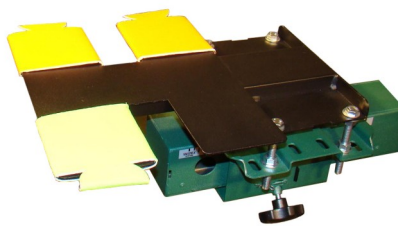


## Quick Stretch



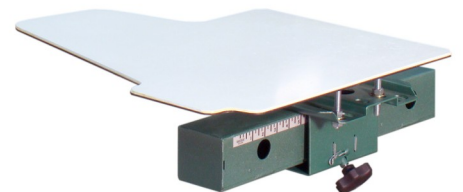
- 6" x 6"
- 9" x 8"
- 10.5" x 17"
- 15" x 17"
- 17" x 21"
- 4" x 17"

## Koozie Pallet



Print 4 Koozies at once!!

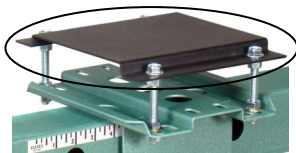
## Wing Pallet- One Sleeve



- 21"W x 18"L
- 21"W x 27"L

## Universal Pallet Mount

Bracket for DIY Pallets p/n: 05-15-037-0



Add Pallet Arm for a complete assembly.

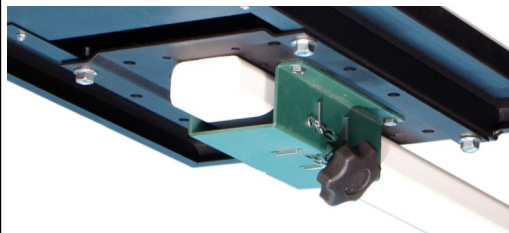
## Pallet Arms:

V-2000: V2-ARM

V-1000: V1-ARM

## Pallet Arm for other brand presses

With 2.5" x 1.5" rotor arms.



Use our pallets on *their* press!

Pallet arms for **Workhorse, Hopkins, Printa,** and more!

Get rid of your wood pallets, and use our never warping, all steel pallets!

p/n: VPA-2.5X1.5

# V-2000 & V-1000

# Technical Specifications



MADE IN U.S.A.

	V-1000 Series		V-2000HD Series				
	V1-44	V1-46	V2HD-44	V2HD-46	V2HD-66	V2HD-88	V2HD-1010
Warranty	3 year	3 year	25 year*	25 year*	25 year*	25 year*	25 year*
Pallet Materials	Steel w/ rubber tops	Steel w/ rubber tops	Steel w/ rubber tops	Steel w/ rubber tops	Steel w/ rubber tops	Steel w/ rubber tops	Steel w/ rubber tops
Head Lifting Spring	Extension Spring	Extension Spring	Gas Spring	Gas Spring	Gas Spring	Gas Spring	Gas Spring
All Heads Down via	Floating Heads	Floating Heads	Fixed Heads	Fixed Heads	Fixed Heads	Fixed Heads	Fixed Heads
Micro-registration	Basic	Basic	Advanced, wrenchless, & anti-backlash	Advanced, wrenchless, & anti-backlash	Advanced, wrenchless, & anti-backlash	Advanced, wrenchless, & anti-backlash	Advanced, wrenchless, & anti-backlash
Leveling	Basic	Basic	Advanced	Advanced	Advanced	Advanced	Advanced
Height legs to pallet	34.5" (88 cm)	34.5" (88 cm)	34.5" (88 cm)	34.5" (88 cm)	34.5" (88 cm)	34.5" (88 cm)	34.5" (88 cm)
Height legs (w-wheels) to pallet	38.5" (98 cm)	38.5" (98 cm)	38.5" (98 cm)	38.5" (98 cm)	38.5" (98 cm)	38.5" (98 cm)	38.5" (98 cm)
Diameter (Standard)	83" (211 cm)	94" (239 cm)	91" (231 cm)	97" (246 cm)	99" (252 cm)	109" (277 cm)	131" (333 cm)
Diameter (Fully Extended)	95" (241 cm)	106" (269 cm)	105" (267 cm)	105" (267 cm)	111" (282 cm)	121" (307 cm)	137" (348 cm)
Maximum Screen Width***	25" (63.5 cm)	21" (53 cm)	39" (99 cm)	27" (69 cm)	27" (69 cm)	23" (58.5 cm)	25" (63.5 cm)
Maximum Screen Width w/ optional side clamps	N/A	N/A	24" (61 cm)	24" (61 cm)	24" (61 cm)	21" (53 cm)	21" (53 cm)
Max. Screen Weight	5.5 lbs (2.5 kg)	5.5 lbs (2.5 kg)	8 lbs (3.6 kg)	8 lbs (3.6 kg)	8 lbs (3.6 kg)	8 lbs (3.6 kg)	8 lbs (3.6 kg)
Max. Screen Weight w/ double gas springs	N/A	N/A	30 lbs (13.6 kg)	30 lbs (13.6 kg)	30 lbs (13.6 kg)	30 lbs (13.6 kg)	30 lbs (13.6 kg)
Max. Screen Weight w/ HD Head upgrades	26 lbs (11.8 kg)	26 lbs (11.8kg)	50 lbs (22.7 kg)	50 lbs (22.7 kg)	50 lbs (22.7 kg)	50 lbs (22.7 kg)	50 lbs (22.7 kg)
Maximum Standard Pallet size	20" x 24" (51 x 61 cm)	20" x 24" (51 x 61 cm)	27" x 32" (69 x 81 cm) Larger custom sizes available	27" x 32" (69 x 81 cm) Larger custom sizes available	27" x 32" (69 x 81 cm) Larger custom sizes available	27" x 32" (69 x 81 cm) Larger custom sizes available	27" x 32" (69 x 81 cm) Larger custom sizes available
Fits Through 33" (84 cm) Doorway	Yes	Yes	Yes	Yes	Yes	Yes	No Requires dock door
Unit Weight	256 lbs (116 kg)	308 lbs (140 kg)	400 lbs (182 kg)	473 lbs (214.5 kg)	550 lbs (250 kg)	750 lbs (340 kg)	1075 lbs (488 kg)
Can Ship UPS	Yes	Yes	No	No	No	No	No
Shipping Weight**	450 lbs (204 kg) or (UPS) 325 lbs (150 kg)	475 lbs (215 kg) or (UPS) 350 lbs (160 kg)	685 lbs (311 kg)	710 lbs (322 kg)	800 lbs (363 kg)	1,025 lbs (465 kg)	1,423 lbs (646 kg)
Shipping Dimensions**	(1) 48" x 45" x 28" [122 x 115 x 71 cm]  or ship UPS (in 10 boxes): (1) 16" x 16" x 16" [41 x 41 x 41 cm] (1) 37" x 9" x 9" [94 x 23 x 23 cm] (2) 37" x 11" x 14" [94 x 28 x 36 cm] (2) 24" x 19" x 14" [61 x 48 x 36 cm] (4) 13" x 13" x 7" [33 x 33 x 18 cm]	(1) 48" x 45" x 30" [122 x 115 x 76 cm]  or ship UPS: (in 12 boxes): (1) 24" x 24" x 16" [61 x 61 x 41 cm] (1) 37" x 9" x 9" [94 x 23 x 23 cm] (2) 37" x 11" x 14" [94 x 28 x 36 cm] (2) 24" x 19" x 14" [61 x 48 x 36 cm] (6) 13" x 13" x 7" [33 x 33 x 18 cm]	(1) 48" x 48" x 49" [122 x 122 x 125 cm]	(1) 48" x 48" x 49" [122 x 122 x 125 cm]	(1) 48" x 48" x 49" [122 x 122 x 125 cm]	(1) 69" x 48" x 60" [175 x 122 x 153 cm]	(1) 69" x 48" x 60" [175 x 122 x 153 cm]

1 in = 2.54 cm  
1 lb = 0.454 kg

\* 25 year limited warranty. Gas springs & rubber pallet tops covered for 3 years.

\*\* All shipping weights and dimensions are for continental US shipping only. Call for other shipping specifications. Ex-works Allentown PA. Shipping weights are approximate and may vary at time of shipping.

\*\*\* Max screen width is applicable when all heads have screens loaded. Larger screens will fit when the neighboring heads are empty. **Max screen weight** is the limiting factor when all screens are not loaded.