

GEORGIA WORLD CONGRESS CENTER

B 405/406/407

IO SOLUTIONS

ID#: 2023489

EC: CM

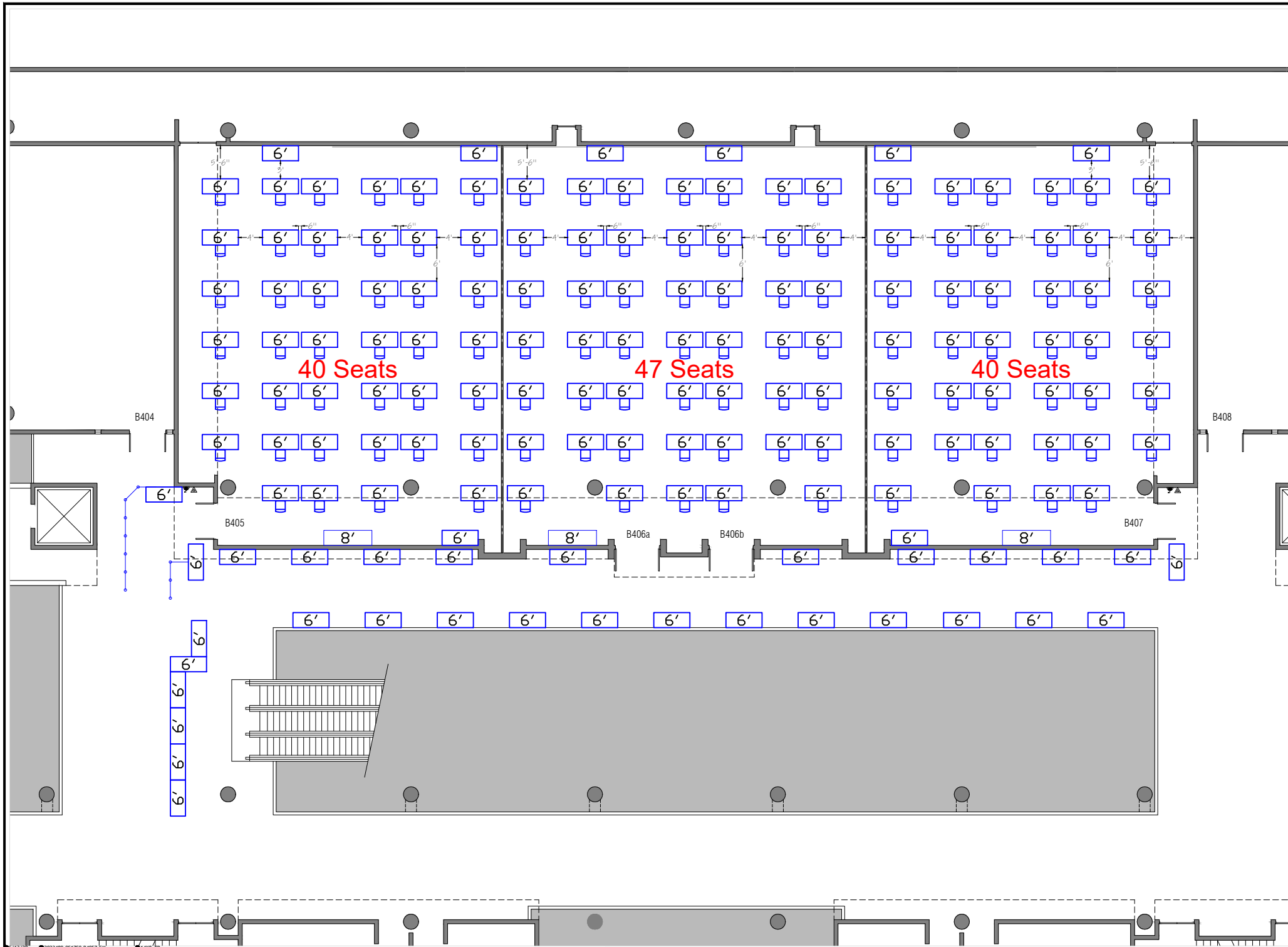
EVENT TIMES

5/17/20

7AM-5P

EQUIPMENT LIST

*****GWCC SET-UP*****
 127 - MEETING ROOM CHAIRS
 3 - 8' X 30" TABLES
 166 - 6' X 30" TABLES
 *****GWCC SECURITY*****
 30 FT OF TENSA BARRIER

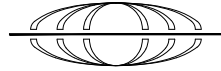


SET NOTES

GENERAL NOTES



NORTH



GEORGIA WORLD CONGRESS CENTER

B 405

IO SOLUTIONS

ID#: 2023489

EC: CM

EVENT TIMES

EQUIPMENT LIST

5/17/20

7AM-5P

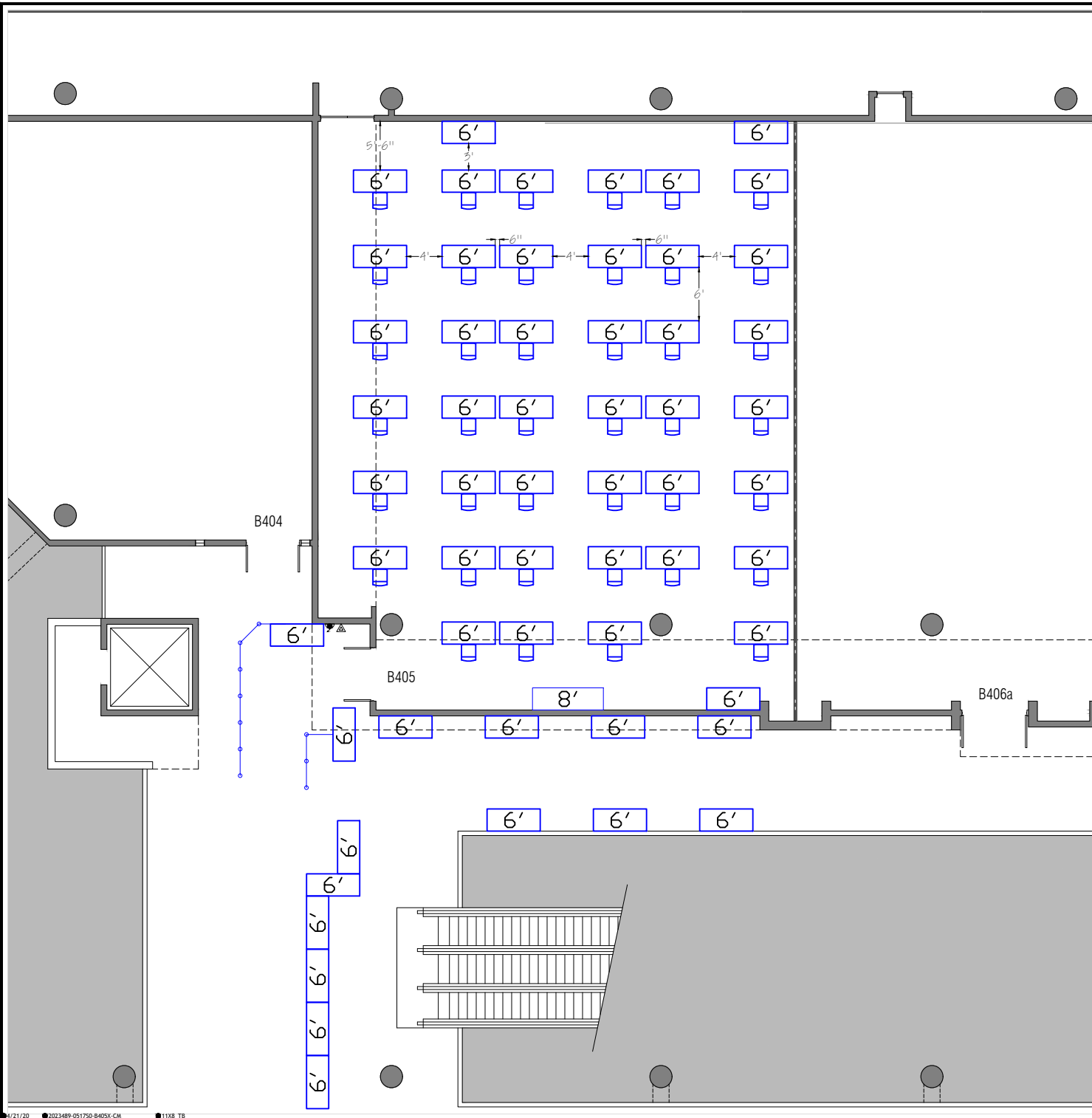
*****GWCC SET-UP*****
 40 - MEETING ROOM CHAIRS
 1 - 8' X 30" TABLES
 58 - 6' X 30" TABLES
 *****GWCC SECURITY*****
 30 FT OF TENSA BARRIER

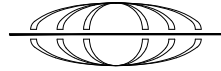
SET NOTES

GENERAL NOTES

AS OF: 05/13/20 R#: 2 CS: JC SC: 1/16 REF: B405X

D CAD Services 2023489-051750-B405X-CM





GEORGIA WORLD CONGRESS CENTER

B 406

IO SOLUTIONS

ID#: 2023489

EC: CM

EVENT TIMES

EQUIPMENT LIST

5/17/20

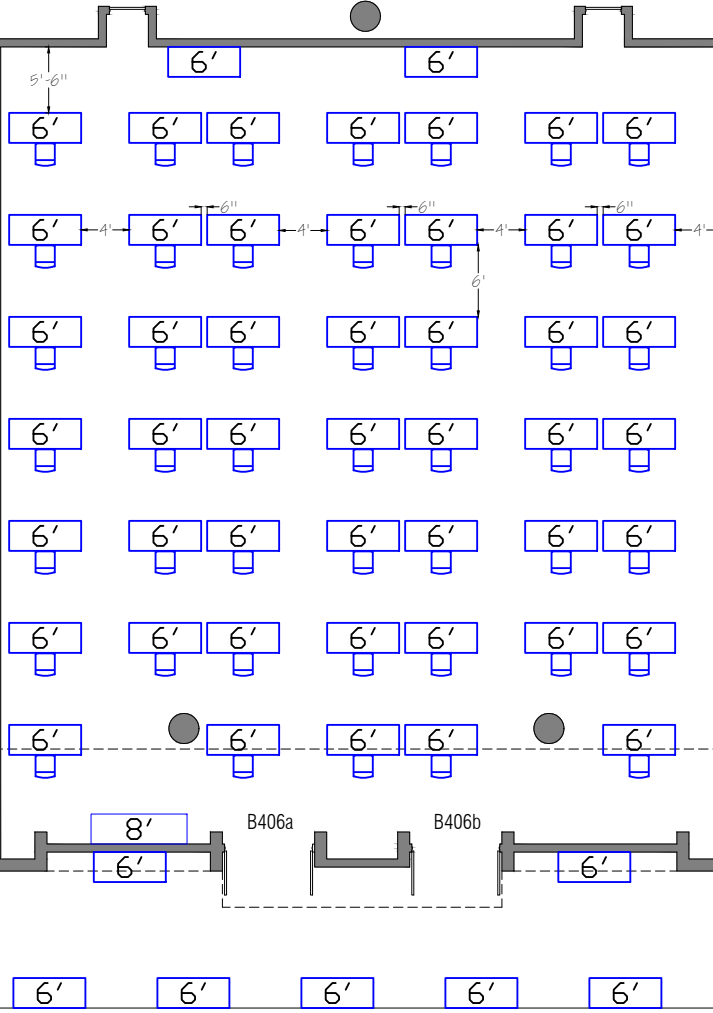
7AM-5P

*****GWCC SET-UP*****

47 - MEETING ROOM CHAIRS

1 - 8' X 30" TABLES

56 - 6' X 30" TABLES



SET NOTES

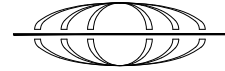
GENERAL NOTES

AS OF: 05/13/20 R#: 2 CS: JC SC: 1/16 REF: B406X



2023489-051750-B406X-CM





GEORGIA WORLD CONGRESS CENTER

B 407

IO SOLUTIONS

ID#: 2023489

EC: CM

EVENT TIMES

5/17/20

7AM-5P

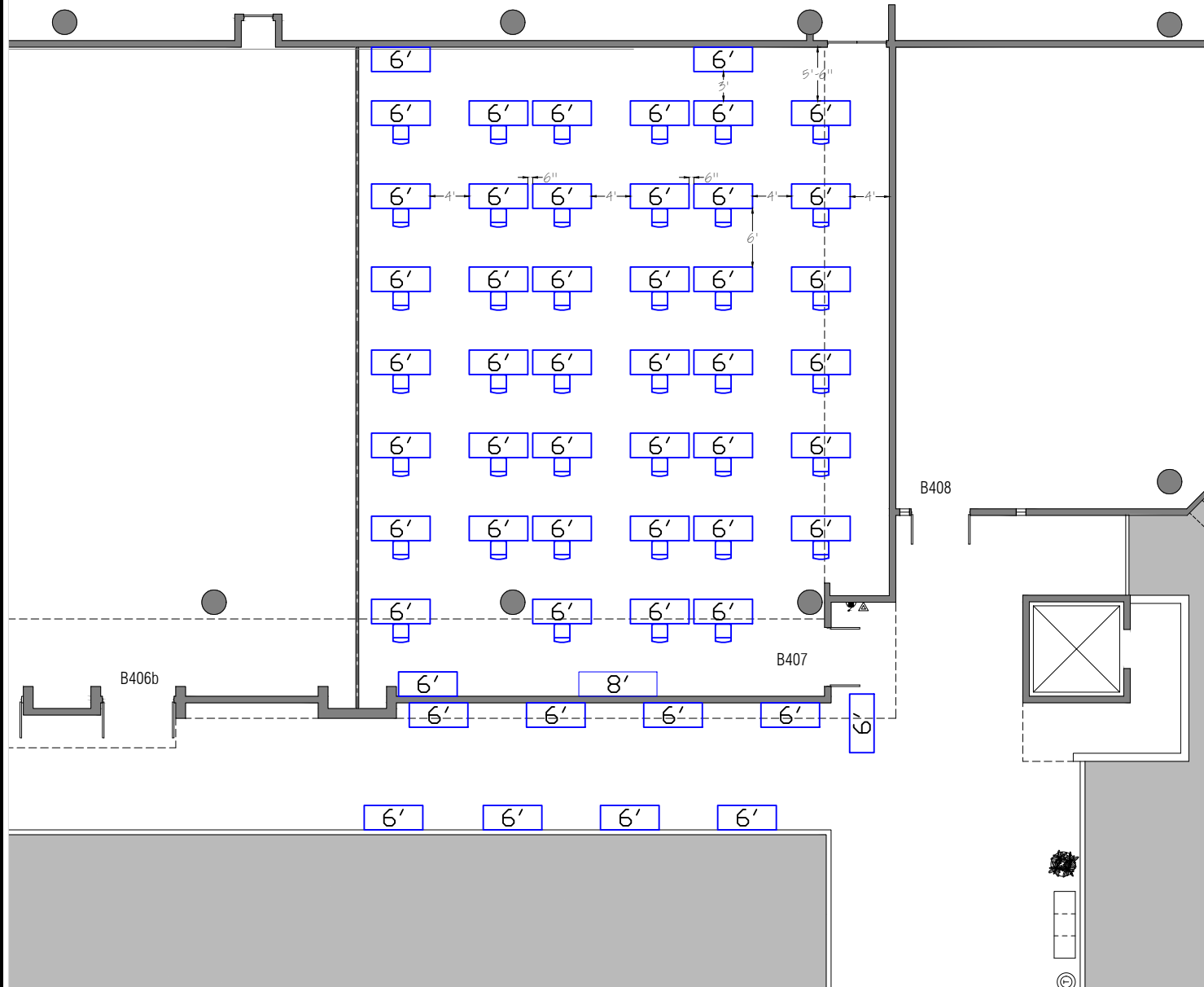
EQUIPMENT LIST

*****GWCC SET-UP*****

40 - MEETING ROOM CHAIRS

1 - 8' X 30" TABLES

52 - 6' X 30" TABLES



SET NOTES

GENERAL NOTES

AS OF: 05/13/20 R#: 2 CS: JC SC: 1/16 REF: B407X



2023489-051750-B407X-CM



