



Complete Manual for

ConferenceSHOT AV

Enterprise-Class Conferencing System

Document 411-0001-30 Rev E
October 2019

Contents

Overview	1
What's in this Guide	3
Features	3
Unpacking the Conferencing System	4
Conferencing Accessories	4
ConferenceSHOT AV Bundles	5
A Quick Look at the System	9
Front of the Camera	9
Back of the Camera	10
Back of the Speaker	10
Installation	11
Don't Void Your Warranty!	11
Before You Install the Camera	11
Installing the Wall Mount	12
About Ceiling-Mounted Cameras	12
Cabling Notes	13
About Echo Cancellation	13
Basic Connections	14
Installing the Camera without the Speaker	16
Installing the Camera and Speaker	17
Powering Up the System	18
Status Indicator Light	18
Using the Remote Control	19
Quick Reference	19
IR Remote Details	20
Storing a Preset Using the Remote	20
Clearing a Preset Using the Remote	20
Using the Web Interface	21
Browser Support	21
Getting the Camera's IP Address	21
User Access	23
Administrative Access	23
Compact Menu View	24
System Administration	25
Configuring the Camera for Your Network	25
For Non-DHCP Environments: Configuring the Device with a Static IP Address for Initial Installation	26
Optional For DHCP Environments: Changing from a DHCP Address to a Static IP Address	28
Changing the Camera's Hostname	28
Specifying Time Zone and NTP Server	29

Setting Passwords and Access	30
Configuring Other Security Settings	30
Enabling or Requiring HTTPS	31
Disabling Telnet Access	31
Adding Room Information to the Screen	32
Saving (Exporting) or Restoring (Importing) a Configuration	32
Installing a Firmware Update	34
Installing a Firmware Update for a Connected Microphone	35
Rebooting the Camera	36
Contacting Vaddio Technical Support	37
Viewing Diagnostic Logs	37
Configuring Camera Behavior	38
Setting the Home Position and Other Preset Shots	38
Renaming Presets	40
Adjusting the Color and Image Quality Settings	40
Lighting and Image Quality Quick Reference	41
Color Adjustment Quick Reference	41
Adjusting the Focus	42
Speed Adjustments	42
Setting the Speeds for Manual Movements	43
Setting the Speeds of Movements to Presets	43
Setting the Direction for Camera Movements	44
Configuring Streaming Behavior	45
Enabling or Disabling Streaming	45
Viewing a Stream	46
Configuring USB Streaming	46
Setting up IP Streaming in Easy Mode	47
Setting up IP Streaming in Custom Mode	48
RTSP Streaming Protocol and URL	49
Configuring RTMP Streaming	50
Changing MTU	51
Managing Audio	52
Muting All Audio Inputs Together	52
Controlling Volume and Muting Per Input or Output	52
Fine-Tuning Microphone Performance	53
Fine-Tuning Speaker Performance	54
Setting up Macros and Triggers	55
Writing and Editing Macros	56
Testing Macros	57
Assigning Macros to Triggers	58
Testing Triggers	59

Example: Assigning a Function to the Connected Microphone's Home Button	59
Additional Camera Settings	60
Indicator Light and Standby Behavior	61
Operating the Camera	62
Stopping or Resuming Video	62
Managing the Camera Ready State	63
Moving the Camera	63
Zooming In or Out	63
Moving the Camera to a Preset Position	63
Muting Your Microphones	63
Adjusting Speaker and Microphone Volume	64
Telnet Serial Command API	65
camera home	66
camera pan	66
camera tilt	67
camera zoom	68
camera focus	69
camera preset	70
camera ccu get	71
camera ccu set	72
camera led	73
camera recalibrate	73
camera standby	74
camera icr	74
video mute	75
audio volume	76
audio mute	77
trigger	78
streaming ip enable	78
streaming settings get	79
network settings get	80
network ping	80
system reboot	81
system factory-reset	81
version	82
history	82
help	82
exit	83
Specifications	84
Troubleshooting and Care	85
Power and Control	85

Video and Streaming	86
Audio	86
Other Issues	87
Status Indicator Light	87
Correct a Motor Calibration Error	88
Restoring Default Camera Settings	89
Operation, Storage, and Care	89
Glossary	90
Compliance and Conformity Statements	94
FCC Part 15 Compliance	94
ICES-003 Compliance	94
European Compliance	95
Warranty and Return Policy	96
Photo Credits	100
Index	101

Overview

This guide covers the ConferenceSHOT™ AV system – a camera and detachable speaker available in silver/black or white, available individually or in conference room bundles:

ConferenceSHOT AV Camera

- North America – 999-9995-000 (silver/black), 999-9995-000W (white)
- Europe and UK – 999-9995-001 (silver/black), 999-9995-001W (white)
- Australia and New Zealand – 999-9995-009 (silver/black), 999-9995-009W (white)

ConferenceSHOT AV Speaker

- Worldwide – 999-9995-003 (black)
- Worldwide – 999-9995-003W (white)



ConferenceSHOT AV Bundle, CeilingMIC 1 (camera, speaker, microphone)

This bundle replaces the Integrator 1 bundle, 999-9995-100/100W/101/101W/109/109W.

- North America – 999-99950-100 (silver/black), 999-99950-100W (white)
- Europe and UK – 999-99950-101 (silver/black), 999-99950-101W (white)
- Australia and New Zealand – 999-99950-109 (silver/black), 999-99950-109W (white)

ConferenceSHOT AV Bundle, CeilingMIC 2 (camera, speaker, two microphones)

This bundle replaces the Integrator 2 bundle, 999-9995-200/200W/201/201W/209/209W.

- North America – 999-99950-200 (silver/black), 999-99950-200W (white)
- Europe and UK – 999-99950-201 (silver/black), 999-99950-201W (white)
- Australia and New Zealand – 999-99950-209 (silver/black), 999-99950-209W (white)

ConferenceSHOT AV Bundle, TableMIC 1 (camera, speaker, microphone)

This bundle replaces the Huddle bundle, 999-9995-300/300W/301/301W/309/309W.

- North America – 999-99950-300 (silver/black), 999-99950-300W (white)
- Europe and UK – 999-99950-301 (silver/black), 999-99950-301W (white)
- Australia and New Zealand – 999-99950-309 (silver/black), 999-99950-309W (white)

ConferenceSHOT AV Bundle, TableMIC 2 (camera, speaker, two microphones)

This bundle replaces the Group bundle, 999-9995-400/400W/401/401W/409/409W.

- North America – 999-99950-400 (silver/black), 999-99950-400W (white)
- Europe and UK – 999-99950-401 (silver/black), 999-99950-4601W (white)
- Australia and New Zealand – 999-99950-409 (silver/black), 999-99950-409W (white)

ConferenceSHOT AV Bundle, TableMIC 1 without Speaker (camera, microphone, HDMI audio embedder)

This bundle replaces the Basic 1 bundle, 999-9995-500/500W/501/501W/509/509W.

- North America – 999-99950-500 (silver/black), 999-99950-500W (white)
- Europe and UK – 999-99950-501 (silver/black), 999-99950-501W (white)
- Australia and New Zealand – 999-99950-509 (silver/black), 999-99950-509W (white)

ConferenceSHOT AV Bundle, TableMIC 2 without Speaker (camera, two microphones, HDMI audio embedder)

This bundle replaces the Basic 2 bundle, 999-9995-600/600W/601/601W/609/609W.

- North America – 999-99950-600 (silver/black), 999-99950-600W (white)
- Europe and UK – 999-99950-601 (silver/black), 999-99950-601W (white)
- Australia and New Zealand – 999-99950-609 (silver/black), 999-99950-609W (white)

ConferenceSHOT AV Bundle, CeilingMIC 2 without Speaker (camera, two microphones)

This bundle replaces the Integrator 2 without speaker bundle, 999-9995-700/700W/701/701W/709/709W.

- North America – 999-99950-700 (silver/black), 999-99950-700W (white)
- Europe and UK – 999-99950-701 (silver/black), 999-99950-701W (white)
- Australia and New Zealand – 999-99950-709 (silver/black), 999-99950-709W (white)

ConferenceSHOT AV Bundle, CeilingMIC 1 without Speaker (camera, microphone)

This bundle replaces the Integrator 1 without speaker bundle, 999-9995-800/800W/801/801W/809/809W.

- North America – 999-99950-800 (silver/black), 999-99950-800W (white)
- Europe and UK – 999-99950-801 (silver/black), 999-99950-801W (white)
- Australia and New Zealand – 999-99950-809 (silver/black), 999-99950-809W (white)

This manual also applies to the following discontinued bundles:

ConferenceSHOT AV Bundle, Integrator 1 (camera, speaker, microphone)

999-9995-100/100W/101/101W/109/109W

Replacement: 999-99950-100/100W/101/101W/109/109W, CeilingMIC 1:

ConferenceSHOT AV Bundle, Integrator 2 (camera, speaker, two microphones)

999-9995-200/200W/201/201W/209/209W

Replacement: 999-99950-200/200W/201/201W/209/209W, CeilingMIC 2

ConferenceSHOT AV Bundle, Huddle (camera, speaker, microphone)

999-9995-300/300W/301/301W/309/309W

Replacement: 999-99950-300/300W/301/301W/309/309W, TableMIC 1

ConferenceSHOT AV Bundle, Group (camera, speaker, two microphones)

999-9995-400/400W/401/401W/409/409W

Replacement: 999-99950-400/400W/401/401W/409/409W, TableMIC 2

ConferenceSHOT AV Bundle, Basic 1 (camera, microphone, HDMI audio embedder)

999-9995-500/500W/501/501W/509/509W

Replacement: 999-99950-500/500W/501/501W/509/509W, TableMIC 1 without Speaker

ConferenceSHOT AV Bundle, Basic 2 (camera, two microphones, HDMI audio embedder)

999-9995-600/600W/601/601W/609/609W

Replacement: 999-99950-600/600W/601/601W/609/609W, TableMIC 2 without Speaker

ConferenceSHOT AV Bundle, Integrator 2 without Speaker (camera, two microphones)

999-9995-700/700W/701/701W/709/709W

Replacement: 999-99950-700/700W/701/701W/709/709W, CeilingMIC 2 without speaker

ConferenceSHOT AV Bundle, Integrator 1 without Speaker (camera, microphone)

999-9995-800/800W/801/801W/809/809W

Replacement: 999-99950-800/800W/801/801W/809/809W, CeilingMIC 1 without speaker

What's in this Guide

This guide covers

- Unpacking
- Physical features
- Installation
- Controlling the camera using the IR remote
- Web interface: System administration and performance/behavior configuration
- Telnet API reference
- Specifications
- Troubleshooting
- Warranty and compliance/conformity information

For your convenience, the information you need to install this product is also available in the smaller, stand-alone **Installation Guide for ConferenceSHOT AV Enterprise-Class Conferencing Systems**.

Features

- Integrated HD camera and audio system ideal for huddle rooms and small to medium conference rooms
- 2.14 Megapixel effective, native 1080p/60 full HD image sensor
- 10x optical zoom, horizontal field of view of 74° in super-wide mode
- Simultaneous uncompressed USB 3.0 and IP (H.264) video with full-duplex audio streaming
- Audio inputs for two Vaddio microphones
- Audio output for optional matching speaker – or integrate into existing audio infrastructure
- Selectable IP stream resolution; USB stream resolution auto-negotiated with conferencing client
- Precise pan and tilt movements at up to 90° per second
- Universal Video Class (UVC) and Universal Audio Class (UAC) drivers supported in Windows®, macOS®, and Linux operating systems, compatible with most UC conferencing applications
- Integration-ready Telnet control
- Enterprise-class IT administrative capabilities with full web controls for remote management
- Presenter-friendly IR remote control

Unpacking the Conferencing System

Make sure you received all the items you expected. Here are the packing lists for the ConferenceSHOT AV system.

Caution

Always support the camera's body when lifting or moving it. Lifting the camera by its head or mounting arm will damage it.



ConferenceSHOT AV camera

North America: 999-9995-000 (black/silver) or 999-9995-000W (white)

Europe and UK: 999-9995-001 (black/silver) or 999-9995-001W (white)

Australia and New Zealand: 999-9995-009 (black/silver) or 999-9995-009W (white)

- ConferenceSHOT AV camera (silver/black or white)
- Vaddio IR Remote Commander
- PoE+ mid-span power injector with AC cord set(s)
- Cat-5e cable, 10 ft (3 m)
- USB 3.0 cable, 6 ft (1.8 m)
- 4-contact Phoenix-style connector
- Thin Profile Wall Mount with mounting hardware

Conferencing Accessories

ConferenceSHOT AV speaker

All locales: 998-9995-003 (black) or 998-9995-003W (white)

- ConferenceSHOT AV speaker
- Rail mount kit (mounts to the camera or the camera mount)
- Power/audio cable, 6 in. (15 cm)

HDMI audio embedder kit

All locales: 999-9995-004

- HDMI audio embedder
- Audio interface module
- ConferenceSHOT AV speaker cable
- HDMI cable
- Audio interface to HDMI audio embedder patch cable, 4 ft (1.2 m)
- Power cable, 4 ft. (1.2 m)

ConferenceSHOT AV Bundles

ConferenceSHOT AV Bundle – TableMIC 1

Replaces *ConferenceSHOT AV Huddle* Bundle

North America: 999-99950-300 (black/silver) or 999-99950-300W (white)

Europe and UK: 999-99950-301 (black/silver) or 999-99950-301W (white)

Australia and New Zealand: 999-99950-309 (black/silver) or 999-99950-309W (white)

- ConferenceSHOT AV camera
- VaddioIR Remote Commander
- PoE+ mid-span power injector with AC cord set(s)
- USB 3.0 A to B cable, 6 ft (1.8 m)
- Cat-5e cable, 10 ft (3 m)
- 4-contact Phoenix-style connector
- Thin Profile Wall Mount with mounting hardware
- ConferenceSHOT AV speaker
- Power/audio cable, 6 in. (15 cm)
- Rail mount kit (mounts to the camera or its mount)
- One TableMIC microphone
- Cat-5e cable, 25 ft (7.6 m)

ConferenceSHOT AV Bundle – TableMIC 1 without Speaker

Replaces *ConferenceSHOT AV Basic 1* Bundle

North America: 999-99950-500 (black/silver) or 999-99950-500W (white)

Europe and UK: 999-99950-501 (black/silver) or 999-99950-501W (white)

Australia and New Zealand: 999-99950-509 (black/silver) or 999-99950-509W (white)

- ConferenceSHOT AV camera
- VaddioIR Remote Commander
- PoE+ mid-span power injector with AC cord set(s)
- USB 3.0 A to B cable, 6 ft (1.8 m)
- Cat-5e cable, 10 ft (3 m)
- 4-contact Phoenix-style connector
- Thin Profile Wall Mount with mounting hardware
- HDMI audio embedder
- Audio interface module
- DC cable, 1 ft (0.3 m)
- Audio interface to HDMI audio embedder patch cable, 4 ft (1.2 m)
- HDMI cable, 6 ft (1.8 m)
- Dual RCA audio cable, 1.5 ft (0.5 m)
- TableMIC microphone
- Cat-5 cable, 25 ft (7.6 m)

ConferenceSHOT AV Bundle – TableMIC 2

Replaces *ConferenceSHOT AV Group Bundle*

North America: 999-99950-400 (black/silver) or 999-99950-400W (white)

Europe and UK: 999-99950-401 (black/silver) or 999-99950-401W (white)

Australia and New Zealand: 999-99950-409 (black/silver) or 999-99950-409W (white)

- ConferenceSHOT AV camera
- VaddiIR Remote Commander
- PoE+ mid-span power injector with AC cord set(s)
- USB 3.0 A to B cable, 6 ft (1.8 m)
- Cat-5e cable, 10 ft (3 m)
- 4-contact Phoenix-style connector
- Thin Profile Wall Mount with mounting hardware
- ConferenceSHOT AV speaker
- Power/audio cable, 6 in. (15 cm)
- Rail mount kit (mounts to the camera or its mount)
- Two TableMIC microphones
- Cat-5e cable, 25 ft (7.6 m)

ConferenceSHOT AV Bundle – TableMIC 2 without Speaker

Replaces *ConferenceSHOT AV Basic 2 Bundle*

North America: 999-99950-600 (black/silver) or 999-99950-600W (white)

Europe and UK: 999-99950-601 (black/silver) or 999-99950-601W (white)

Australia and New Zealand: 999-99950-609 (black/silver) or 999-99950-609W (white)

- ConferenceSHOT AV camera
- VaddiIR Remote Commander
- PoE+ mid-span power injector with AC cord set(s)
- USB 3.0 A to B cable, 6 ft (1.8 m)
- Cat-5e cable, 10 ft (3 m)
- 4-contact Phoenix-style connector
- Thin Profile Wall Mount with mounting hardware
- HDMI audio embedder
- Audio interface module
- DC cable, 1 ft. (0.3 m)
- Audio interface to HDMI audio embedder patch cable, 4 ft (1.2 m)
- HDMI cable, 6 ft. (1.8 m)
- Dual RCA audio cable, 1.5 ft (0.5 m)
- TableMIC microphone, qty. 2
- Cat-5 cable, 25 ft (7.6 m), qty. 2

ConferenceSHOT AV Bundle – CeilingMIC 1

Replaces *ConferenceSHOT AV Integrator 1 Bundle*

North America: 999-99950-100 (black/silver) or 999-99950-100W (white)

Europe and UK: 999-99950-101 (black/silver) or 999-99950-101W (white)

Australia and New Zealand: 999-99950-109 (black/silver) or 999-99950-109W (white)

- ConferenceSHOT AV camera
- Vaddio IR Remote Commander
- PoE+ mid-span power injector with AC cord set(s)
- USB 3.0 A to B cable, 6 ft (1.8 m)
- Cat-5e cable, 10 ft (3 m)
- 4-contact Phoenix-style connector
- Thin Profile Wall Mount with mounting hardware
- ConferenceSHOT AV speaker
- Power/audio cable, 6 in. (15 cm)
- Rail mount kit (mounts to the camera or the camera mount)
- CeilingMIC microphone, white, with strain-relief boot
- In-ceiling interface box
- Tile brace
- Trim plates, qty. 2, with mounting hardware (white)
- Drop-down cable (white)
- Small zip-tie
- Strain relief clamp
- Split grommet

ConferenceSHOT AV Bundle – CeilingMIC 1 (without speaker)

Replaces *ConferenceSHOT AV Integrator 1 without Speaker Bundle*

North America: 999-99950-800 (black/silver) or 999-99950-800W (white)

Europe and UK: 999-99950-801 (black/silver) or 999-99950-801W (white)

Australia and New Zealand: 999-99950-809 (black/silver) or 999-99950-809W (white)

- ConferenceSHOT AV camera
- Vaddio IR Remote Commander
- PoE+ mid-span power injector with AC cord set(s)
- USB 3.0 A to B cable, 6 ft (1.8 m)
- Cat-5e cable, 10 ft (3 m)
- 4-contact Phoenix-style connector
- Thin Profile Wall Mount with mounting hardware
- One CeilingMIC microphone, white, with strain-relief boot
- In-ceiling interface box
- Tile brace
- Trim plates, qty. 2, with mounting hardware (white)
- Drop-down cable (white)
- Small zip-tie
- Strain relief clamp
- Split grommet

ConferenceSHOT AV – CeilingMIC 2

Replaces *ConferenceSHOT AV Integrator 2 Bundle*

North America: 999-99950-200 (black/silver) or 999-99950-200W (white)

Europe and UK: 999-99950-201 (black/silver) or 999-99950-201W (white)

Australia and New Zealand: 999-99950-209 (black/silver) or 999-99950-209W (white)

- ConferenceSHOT AV camera
- Vaddio IR Remote Commander
- PoE+ mid-span power injector with AC cord set(s)
- USB 3.0 A to B cable, 6 ft (1.8 m)
- Cat-5e cable, 10 ft (3 m)
- 4-contact Phoenix-style connector
- Thin Profile Wall Mount with mounting hardware
- ConferenceSHOT AV speaker
- Power/audio cable, 6 in. (15 cm)
- Rail mount kit (mounts to the camera or the camera mount)
- CeilingMIC microphone, white, with strain-relief boot, qty. 2
- In-ceiling interface box, qty. 2
- Tile brace, qty. 2
- Trim plates, qty. 4, with mounting hardware (white)
- Drop-down cable (white), qty. 2
- Small zip-tie, qty. 2
- Strain relief clamp, qty. 2
- Split grommet, qty. 2

ConferenceSHOT AV Bundle – CeilingMIC 2 (without speaker)

Replaces *ConferenceSHOT AV Integrator 2 without Speaker Bundle*

North America: 999-99950-700 (black/silver) or 999-99950-700W (white)

Europe and UK: 999-99950-701 (black/silver) or 999-99950-701W (white)

Australia and New Zealand: 999-99950-709 (black/silver) or 999-99950-709W (white)

- ConferenceSHOT AV camera
- Vaddio IR Remote Commander
- PoE+ mid-span power injector with AC cord set(s)
- USB 3.0 A to B cable, 6 ft (1.8 m)
- Cat-5e cable, 10 ft (3 m)
- 4-contact Phoenix-style connector
- Thin Profile Wall Mount with mounting hardware
- CeilingMIC microphone, white, with strain-relief boot, qty. 2
- In-ceiling interface box, qty. 2
- Tile brace, qty. 2
- Trim plates, qty. 4, with mounting hardware (white)
- Drop-down cable (white), qty. 2
- Small zip-tie, qty. 2
- Strain relief clamp, qty. 2
- Split grommet, qty. 2

A Quick Look at the System

This section covers the physical features of the camera.

Front of the Camera

This photograph shows the camera and speaker mounted together.



Camera and zoom lens – The ConferenceSHOT AV camera features a 10X optical zoom lens (11X in Super-Wide mode).

IR sensor – Receives signals from the IR remote. Make sure there's nothing directly in front of the camera base, and point the remote at the camera.

Status light – The multi-colored LED indicates the camera's current state. This light can be turned off in the administrative web interface.

Note

By default, the camera's status indicator light is active during normal operation; however, it can be configured to remain off when the camera is powered up. The camera may be sending video even if the light is off.

Speaker – Far-end conference audio for small rooms. Available in some ConferenceSHOT AV bundles or separately.

Back of the Camera



- **Network PoE+** – RJ-45 connector. Connect to the network and to power via the Power and Data Out port of the mid-span PoE+ power injector. Provides power and network access for IP streaming and camera control via web interface or Telnet.
- **USB 3.0** – USB type B connector. Connect to a computer for use with soft conferencing applications. Provides uncompressed USB 3.0 stream.
- **EasyMic ports** – RJ-45 connectors. Connect up to two Vaddio CeilingMIC, TableMIC, or other EasyMic-compatible microphones.
- **Audio output** – Line level differential audio and 12 VDC power output to the optional amplified speaker or other audio infrastructure.

Back of the Speaker



Use the provided speaker cable to connect the speaker to the camera.

Installation

This section covers:

- Selecting the location for the camera
- Installing the mount
- Connecting the camera (and speaker, if purchased)
- Mounting the camera (and speaker, if purchased)

And a required safety note here:

Note

PoE type networks connected to this equipment are for intra-building use only and should not be connected to lines that run outside of the building in which this product is located.

Don't Void Your Warranty!



Caution

Always support the camera's body when lifting or moving it. Lifting the camera by its head or mounting arm will damage it.

Caution

This product is for indoor use. Do not install it outdoors or in a humid environment without the appropriate protective enclosure. Do not allow it to come into contact with any liquid.

Caution

Do not install or operate this product if it has been dropped, damaged, or exposed to liquids. If any of these things happen, return it to Vaddio for safety and functional testing.

Before You Install the Camera

Things to keep in mind when deciding where to install the camera:

- Consider camera viewing angles, lighting conditions, line-of-sight obstructions, and in-wall obstructions where the camera is to be mounted.
- Ensure that the camera body can move freely and will normally point away from the ceiling and lights. The camera will not perform well if it is pointed toward a light source such as a light fixture or window.
- If the remote will be used, ensure that nothing blocks the IR lens in the camera's base.

Prepare for a successful installation:

- Be sure you can identify all cables correctly.
- Check Cat-5 cables for continuity.
- Talk to the network administrator. If installing the camera in a non-DHCP network (one that does not automatically assign IP addresses), you will need to configure the camera with a static IP address as directed by the network administrator.

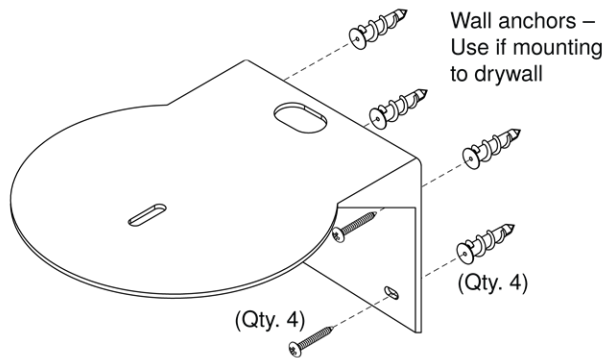
Installing the Wall Mount

The camera is shipped with a wall mount. Other mounting options are available as well. Contact us if you don't have the camera mount you need.

You can install the camera wall mount to a 2-gang wall box or directly to the drywall.

- If you mount it to drywall, use the wall anchors provided with the wall mount.
- If you mount it to a wall box, use the cover plate screws supplied with the wall box.

If you install the camera wall mount to drywall, use the wall anchors provided with the mount.



This mount may be installed as shown, or flipped 180° so that the wall attachment is directly behind the camera.

About Ceiling-Mounted Cameras

If you use an inverted mount, set the camera's Image Flip mode ON for inverted operation. This orients the video image correctly and sets the tilt motors to respond appropriately to tilt up and down commands from the remote, web interface, and connected control devices. This control is available to the administrator on the web interface's System page.

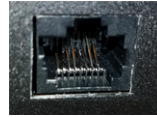
Cabling Notes

Caution

When building cables for Vaddio products, do not use pass-through RJ-45 connectors. If they are crimped incorrectly, they can cause intermittent connections and degrade signal quality. Incorrectly crimped pass-through connectors can also damage the connectors on the product, which will void your warranty.



Intact – will make reliable contact with cable connector



Damaged – Bent contact fingers will NOT make reliable contact with cable connector

Use Cat-5e or better cable. We recommend using high-quality connectors and a high-quality crimping tool. We recommend shielded cabling if the cables will be coiled, run tightly with other cables, or routed near sources of electromagnetic interference such as power lines or fluorescent light fixtures.

Caution

Check your cables. Connecting a cable to the wrong port or using the wrong pin-out can result in equipment damage and will void the warranty.

Pro Tip

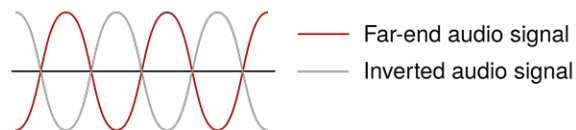
Label all cables at both ends.

About Echo Cancellation

When a microphone picks up the audio from a speaker (far-end audio) during a conference, it sends the far-end audio back to the participants at the far end, creating an echo. Acoustic echo cancellation prevents this.

Here's how it works:

1. The speaker feeds the far-end audio into the room. This signal also goes to the audio processor as the reference that needs to be canceled.
2. The audio processor inverts the signal and sends it to the microphone.
3. The sum of the audio that the microphone picks up from the speaker and the inverted signal is 0: The echo is canceled.



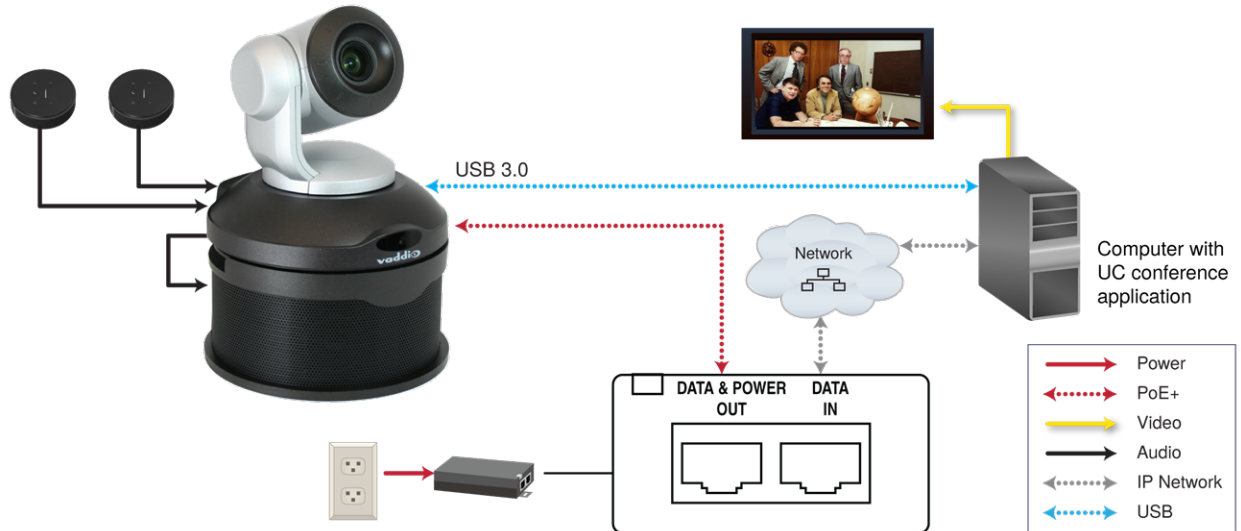
With the audio from the speaker canceled out, the audio from the microphone includes only the sounds originating at your end of the conference.

For the ConferenceSHOT AV system's acoustic echo cancellation to work,

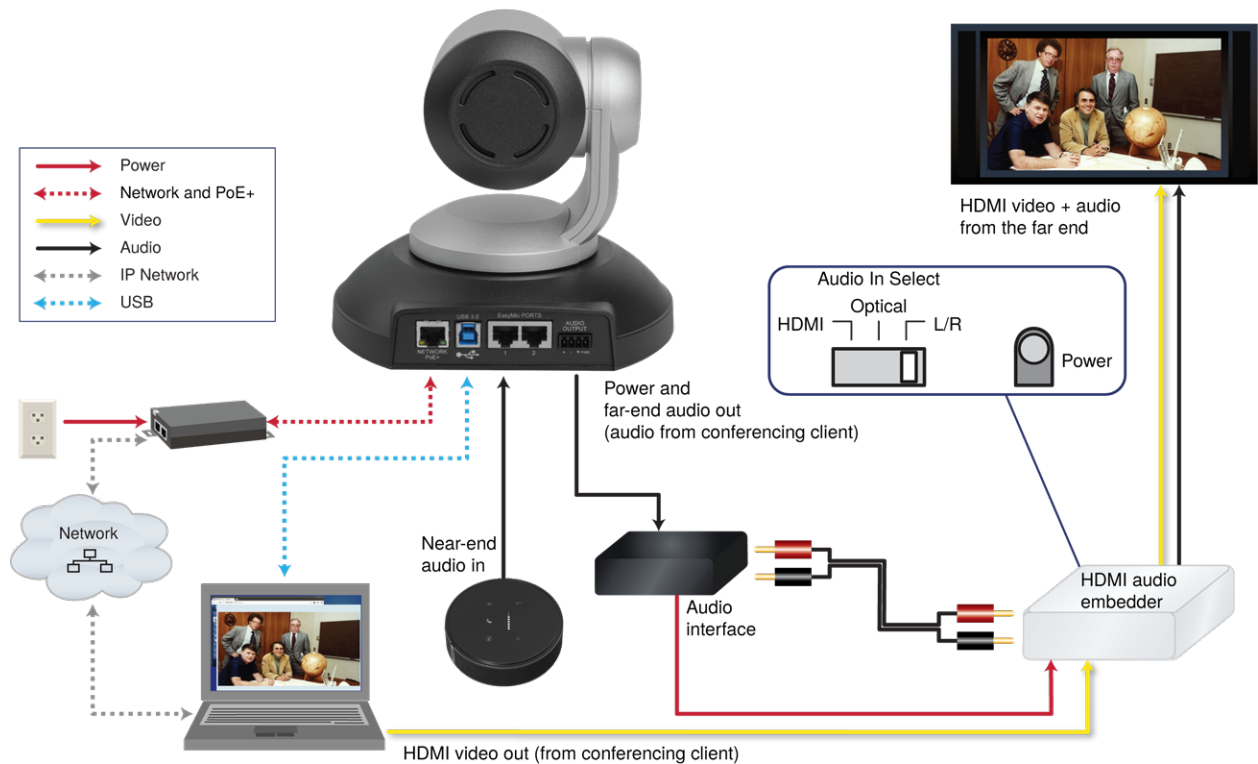
- The line outputs or the powered speaker must be connected to provide the audio to be canceled, and
- The microphone(s) must be connected, to route the audio from the speakers to the audio processor.
- In the soft conferencing client, you must select the speakers and microphone connected to the camera as the conference audio devices.

Basic Connections

Here is an example of how the camera might be set up in a medium-size conference room. (Shown: ConferenceSHOT AV bundle – TableMIC 2.) In this setup, a PC uses a unified communications conferencing application to manage the camera and connected microphones and speaker. When connected in this way, the system provides echo cancellation.



The camera can also be connected without the speaker, using an HDMI audio embedder to include the far-end audio in the HDMI output. (Shown: ConferenceSHOT AV bundle – TableMIC 1 without speaker.) This allows you to use a display with integrated speakers. When connected this way, the system provides echo cancellation.



This product is intended for installation and use only in environments where all PoE/PoE+ connections originate within the building. It is not to be connected to lines that run outside the building where it is installed.

Installing the Camera without the Speaker

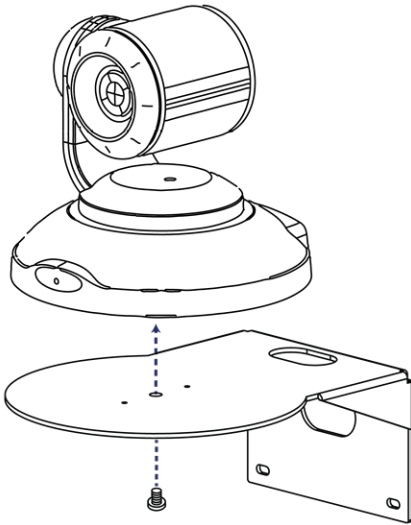
Caution

Before you start, be sure you can identify all cables correctly. Connecting a cable to the wrong port can result in equipment damage.

Caution

Check your cables. Connecting a cable to the wrong port or using the wrong pin-out can result in equipment damage and will void the warranty.

1. Route the cables through the opening in the mounting shelf.
2. Connect all required cables to the camera.
3. Secure the camera to the mounting shelf using the mounting screw ($\frac{1}{4}$ -20 x .375 in.) supplied with the camera.

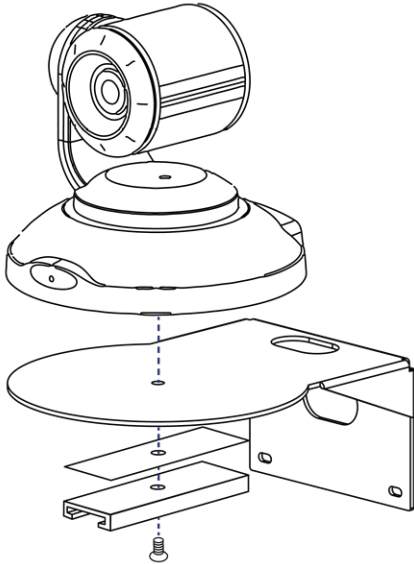


Note

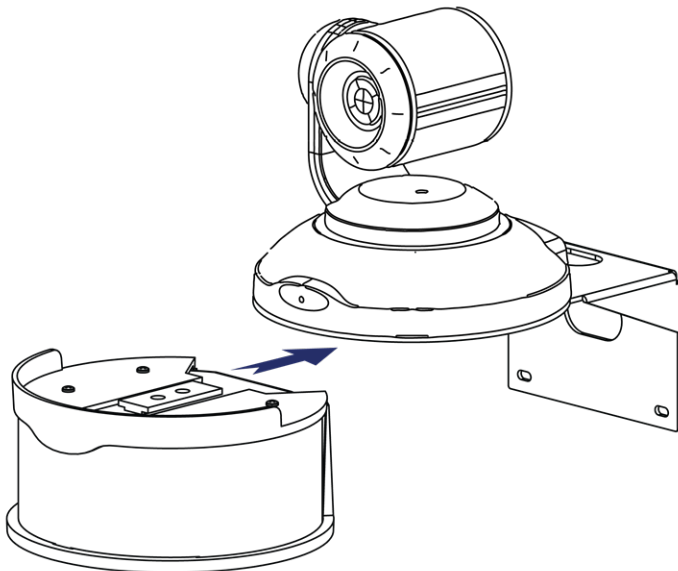
If the camera is jostled or bumped, it may require a pan-tilt reset.

Installing the Camera and Speaker

1. If you are adding a speaker to a previously-installed ConferenceSHOT AV camera, remove its mounting screw.
2. Place the camera on the mounting shelf if you have not already done so.
3. Secure the speaker rail, gasket, and camera to the mounting shelf with the 0.5 in. 1/4-20 flathead screw.



4. Connect the speaker cable (power and line level signal) to the speaker.
5. Slide the speaker into place.



Note

If the camera is jostled or bumped, it may require a pan-tilt reset.

Powering Up the System

Connect camera power. The camera will initialize and move. This will take a few seconds. When an image is available, the camera is ready to accept control information.

Status Indicator Light

The light in the camera's base indicates its current state.

- Blue – Camera is active
- Purple – Standby mode or booting
- Yellow – Firmware update is in progress
- Blinking blue – USB cable is disconnected (UC color scheme)
- Blinking red – Video mute is on (UC color scheme)
- Blinking yellow – Motor out of calibration

Caution

Do not remove power or reset the camera while the indicator is yellow, showing a firmware update in progress. Interrupting a firmware update can make the camera unusable.

Note

By default, the camera's status indicator light is active during normal operation; however, it can be configured to remain off when the camera is powered up. The camera may be sending video even if the light is off.

Using the Remote Control

The remote provides basic camera control.

Quick Reference

What do you need to do?	Button(s)
Power on or standby	Power (green button at top right)
Select the camera to control (if this remote controls more than one)	Camera Select buttons 1 through 3 (second row on the remote)
Discover the camera's IP address	Data Screen button (top left) – press and hold for 3 seconds
Move the camera	Arrow buttons and Home button (dark red)
Move the camera to a preset position	Position Preset buttons 1 through 6 (bottom two rows)
Focus the camera	Auto Focus button (near arrow buttons) Manual Focus buttons Near and Far (below Zoom Speed buttons)
Mute the microphone(s)	Mic Mute button (center)
Change the speaker volume	Volume buttons (center left)
Change zoom	Zoom buttons – T (telephoto) to zoom in and W (wide-angle) to zoom out. (center right)
Adjust for excess light behind the camera's subject	Back Light button (top center)
Correct a motor calibration fault condition (blinking yellow light)	Pan-Tilt Reset button (center right, beside arrow buttons)

IR Remote Details

The remote provides the following functions:

Data Screen – Press and hold for 3 seconds to display the camera’s IP address and MAC address on the near-end display. Press momentarily to dismiss the information.

Power indicator – Shows power on, IR transmission, and battery level.

Power – Switch the selected camera on or off.

Back Light – Use or turn off back light compensation.

Camera Select – In multi-camera installations, selects the camera to be controlled. See [Camera Switch Settings](#) for information on configuring the camera as camera 1, 2, or 3.

Pan/Tilt (arrow button) controls and Home button – Control the camera’s position.

Std. Pan and Rev. Pan – Control how the camera responds to the arrow buttons. Helpful for ceiling-mounted cameras and installations where the camera will point at the person using the remote.

Pan/Tilt Reset – Recalibrate the pan and tilt motors. If the camera gets jostled, you may need to push this button to ensure that the camera moves accurately to its home and preset positions.

Auto Focus – Switch the camera to Auto-Focus mode.

Volume Increase and Decrease – Control the speaker volume.

Mic Mute – Stop sending audio.

Zoom – Select **T** (telephoto) to zoom in or **W** (wide-angle) to zoom out.

Manual Focus – Switch the camera to Manual Focus mode.

Near (-) adjustment – Moves the focus nearer when in manual focus mode.

Far (+) adjustment – Moves the focus farther when in manual focus mode.

Position Presets 1 through 6 – Move the camera to a predefined position.

Preset – Save the camera’s current position as one of the numbered presets.

Reset – Clear the saved position presets.



Storing a Preset Using the Remote

Set up the shot using the pan, tilt, and zoom controls. Then hold down the **Preset** button and press one of the numbered preset buttons.

Clearing a Preset Using the Remote

Press and hold the **Reset** button while pressing the preset number you want to clear.

Using the Web Interface

The camera's web interface allows control via a network connection, using a browser. Password-protected pages provide administrative access to tasks such as setting passwords, changing the IP address, viewing diagnostics, and installing firmware updates. The user login (or guest access, if it is enabled) provides access to camera controls similar to those available from the IR remote.

You will need to know the camera's IP address to use the web interface. If the IP network has a DHCP server, the camera will get its IP address, gateway and routing information automatically and you will be able to browse to it. If not, you will need to configure the camera to use a static IP address.

Browser Support

We have tested this product with these web browsers:

- Chrome®
- Firefox®
- Microsoft® Edge and Internet Explorer®
- Safari®

We test using the browser version available from the vendor at that time. Other browsers (including older versions of the ones on this list) are likely to work also.

Getting the Camera's IP Address

You will need to be able to view the camera's video output.

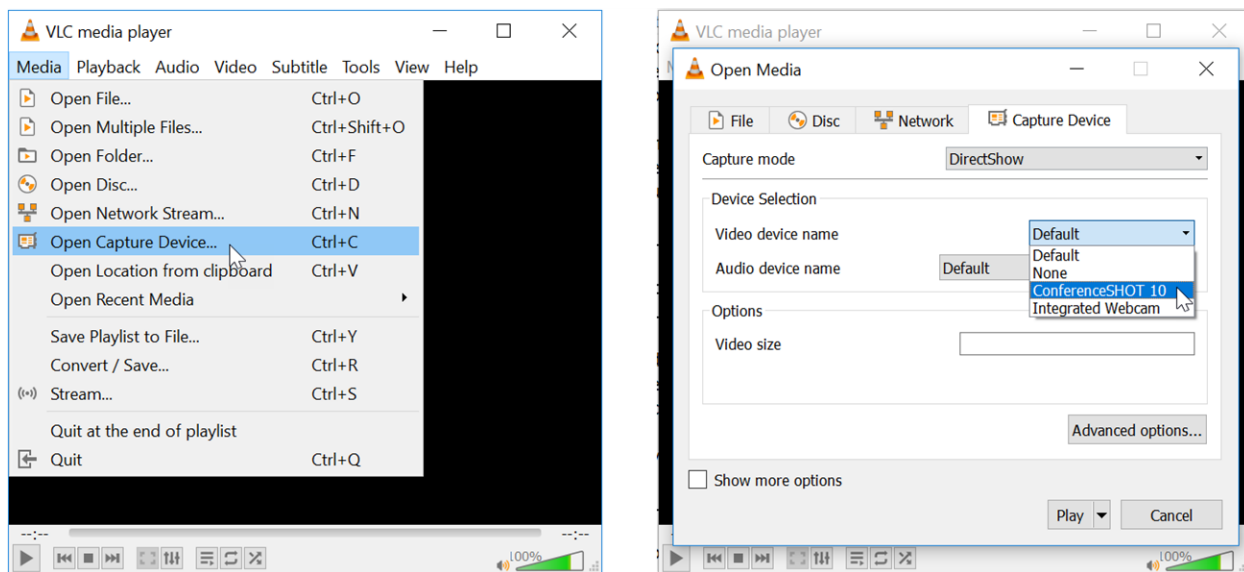
If video is available from the camera:

1. Press the Data Screen button on the remote. The display presents the camera's IP address and MAC address.
2. Press the Data Screen button again to dismiss the information.

If you cannot yet view video from the camera:

1. Connect the camera to the network, and connect the camera's USB cable to your computer. Then power up the camera. If necessary, your computer loads the appropriate USB driver.
2. Open a media player such as VLC Media Player and view the USB stream (If you use VLC Media Player, this is the "Open Capture Device" option under Media.). The camera is available as a video capture device; the device name is ConferenceSHOT AV.

The screen shots below show how you would access the USB stream using VLC Media Player. In this example, the capture device is a ConferenceSHOT 10 camera. The steps are the same for the ConferenceSHOT AV camera; only the video device name differs.



3. Point the remote at the camera and press the Data Screen button. The camera overlays its IP address and MAC address on the video output.
4. Press the button again to dismiss the information display.

If the address is 169.254.1.1:

This is the camera's default IP address. This usually means one of these things:

- The network automatically assigns IP addresses, but the camera is not connected to the network.
- The network does not automatically assign IP addresses, and you need to configure the camera for the network. See [Configuring the Camera with a Static IP Address](#).

Any other IP address means that your camera is available on the network.

If the camera is at another IP address:

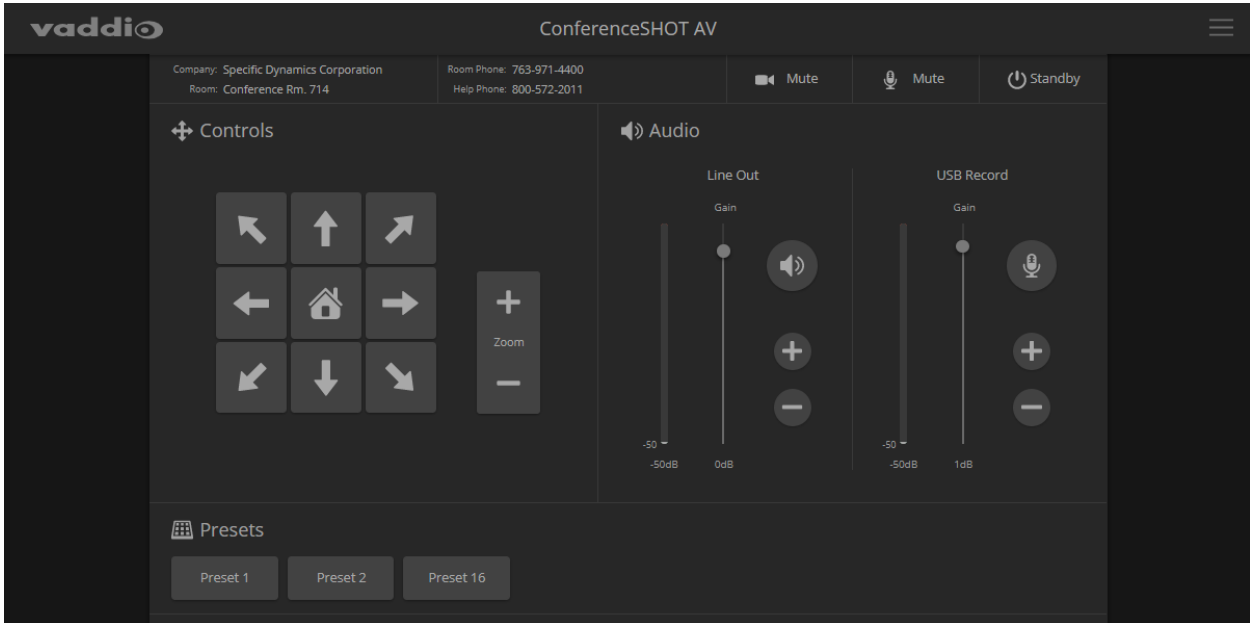
Enter the IP address or hostname in your browser's address bar. You may need to enter `http://` or `https://` as a prefix to keep the browser from treating it as a search query.

(Example: `http://10.30.200.125`)

User Access

By default, the web interface opens to the operator's page, but the camera can be configured to require a user login. Check with the system administrator if the camera's web interface requires you to log in.

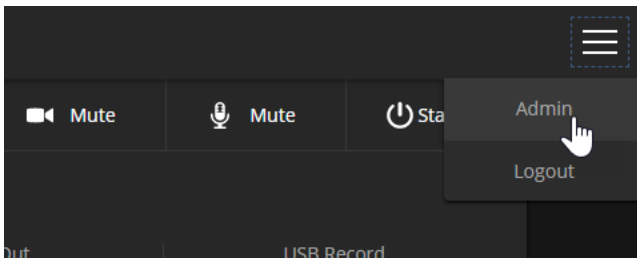
Only the operator's page is available with user-level access.



Your camera's web interface may look somewhat different.

Administrative Access

If you are on the Controls screen, you're logged in at the user level, or guest access is enabled and you're not logged in at all. For access to system administration and performance/behavior configuration tasks, open the menu to log in as admin. For cameras using firmware released before late 2019, the default admin password is **password**.



Note

For best security, change the user and admin passwords from the default. Using the default passwords leaves the product vulnerable to tampering. Be sure you have a way to remember the passwords after changing them.

System administration tasks are on these pages:

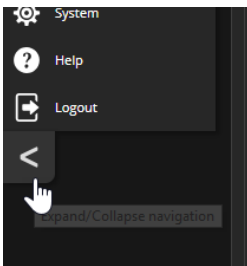
- Network
- Security
- Room Labels
- System
- Help
- Diagnostics

Performance and behavior configuration tasks are on these pages:

- Camera
- Audio
- Control Devices
- Streaming
- System

Compact Menu View

By default, the navigation buttons in the camera's administrative interface display an icon and a text label. You can also select the compact view of the menu buttons instead of the standard view. The button at the bottom of the menu toggles between the two views.



System Administration

This chapter covers settings for managing the camera as an element of your network.

System administration

What do you need?	Go to this page
Passwords and access management	Security
IP address, hostname, and other network settings	Networking
Settings related to date and time	Networking
Information about the camera <ul style="list-style-type: none"> ■ Room location and phone number ■ Help desk phone number 	Room Labels

Maintenance and Troubleshooting

What do you need?	Go to this page
<ul style="list-style-type: none"> ■ Update camera firmware or view the current firmware version ■ Save (export) and restore (import) the camera's configuration ■ Reboot or reset to factory defaults 	System: Firmware
Update microphone firmware	System: Peripherals
Camera adjustment: Recalibrate pan and tilt motors	System : Firmware
Locate Vaddio Technical Support contact information	Help
View diagnostic logs	Diagnostics

See [Configuring Camera Behavior](#) for information on image adjustments, streaming configuration, and other items related to camera behavior.

Note

Vaddio's cameras have very similar web interfaces. Some of the screen shots in this manual may be from other models of camera.

Configuring the Camera for Your Network

By default, the camera is set to DHCP, and will receive an IP address automatically if your network assigns IP addresses. In this type of environment, the camera is available for use immediately, without any network configuration. However, you may find it helpful to make certain changes; and most organizations have policies concerning hostnames, static address assignments for certain equipment, and other aspects of network configuration.

Work with your network specialist to ensure that the camera is configured to comply with the organization's network policies.

For Non-DHCP Environments: Configuring the Device with a Static IP Address for Initial Installation

NETWORKING PAGE

If the camera is currently at an IP address other than 169.254.1.1, skip this section.

If no DHCP server is available to automatically assign an IP address, the camera will use the default IP address of 169.254.1.1. If this is the case, you may need to follow this procedure. If you also need to install another camera or other device on this network, you *will* need to do this to prevent IP address conflicts.

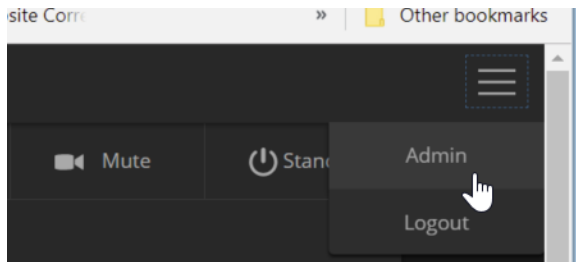
Caution

Consult your IT department before editing network settings. Errors in network configuration can make the camera inaccessible from the network. Do not change DHCP/Static addressing, IP address, subnet mask, or gateway unless you are very familiar with the characteristics and configuration of the network where you install the camera.

To access the camera's Networking page during installation:

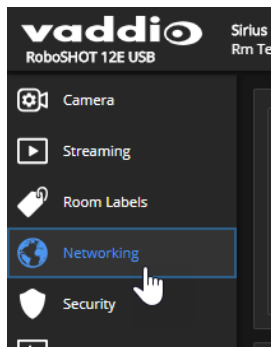
Skip this procedure if the camera has already been in service on this network

1. Connect the camera according to the connection diagram, but *do not connect the camera to the network*.
2. Connect the network port on the camera to the network port on a computer. Depending on the computer, you may need a crossover cable.
3. On the computer, open a browser and access the camera's web interface at <http://169.254.1.1>.
4. Log in as admin. For cameras using firmware released before late 2019, the default password is **password**.



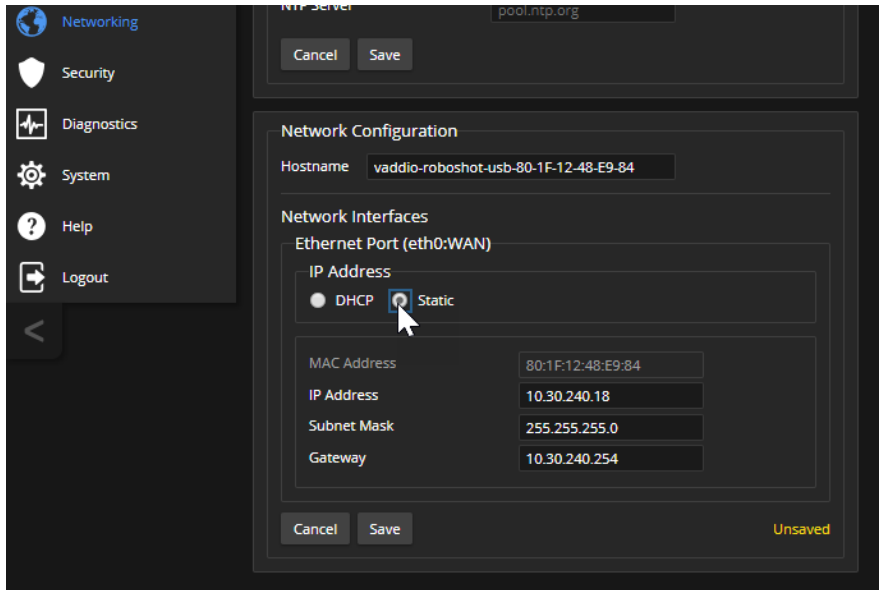
5. Navigate to the Networking page.

Your camera's web interface may look slightly different from these screen shots.



To configure the camera with a static IP address:

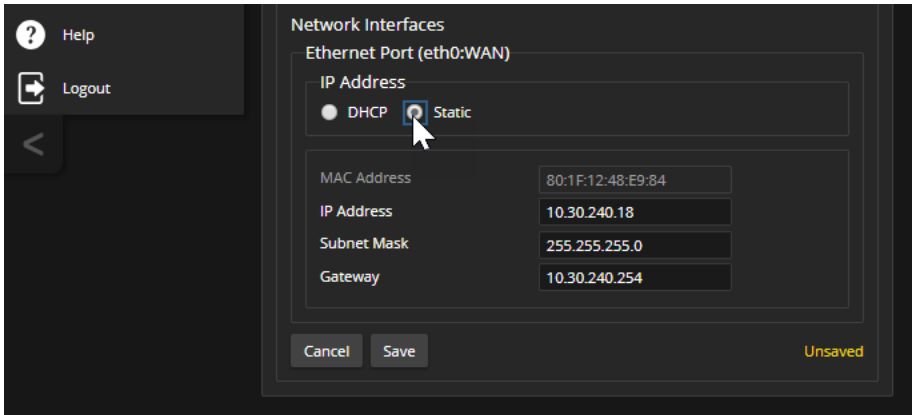
1. Work with your IT department to determine the correct IP address, subnet mask, and gateway to assign.
2. On the Networking page, set IP Address to Static.
3. Enter the IP address, subnet mask, and gateway as directed by the IT staffer; then save your work. The camera is now ready to be connected to the network.



Optional For DHCP Environments: Changing from a DHCP Address to a Static IP Address

NETWORKING PAGE

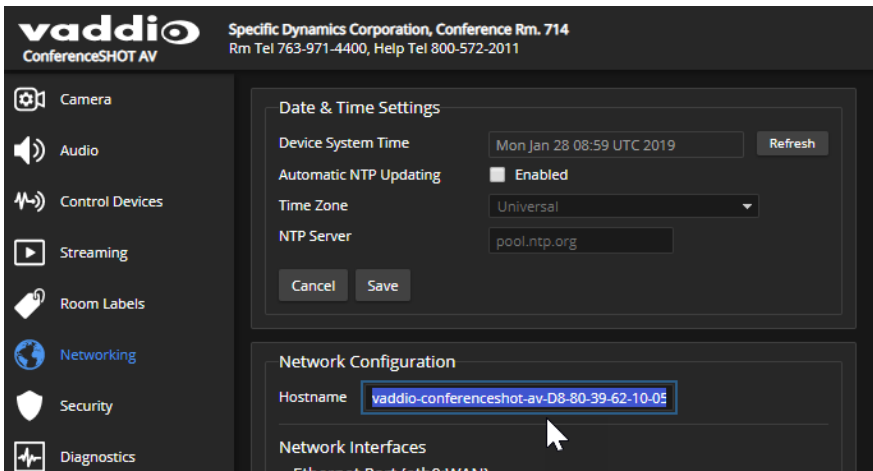
In a network that assigns IP addresses automatically, the camera's IP address may change from time to time. To keep this from happening, set the IP address to Static. *Do not change the IP address, subnet mask, or gateway unless your IT staff instructs you to do so.*



Changing the Camera's Hostname

NETWORKING PAGE

If your network supports hostname resolution, you may find it convenient to change the camera's hostname to something easy to remember. Work with your IT department to ensure that the new hostname conforms to the organization's naming conventions.



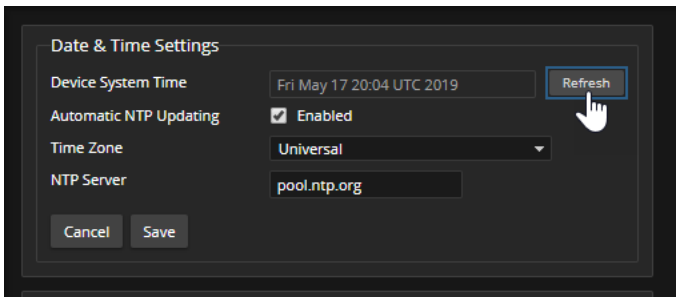
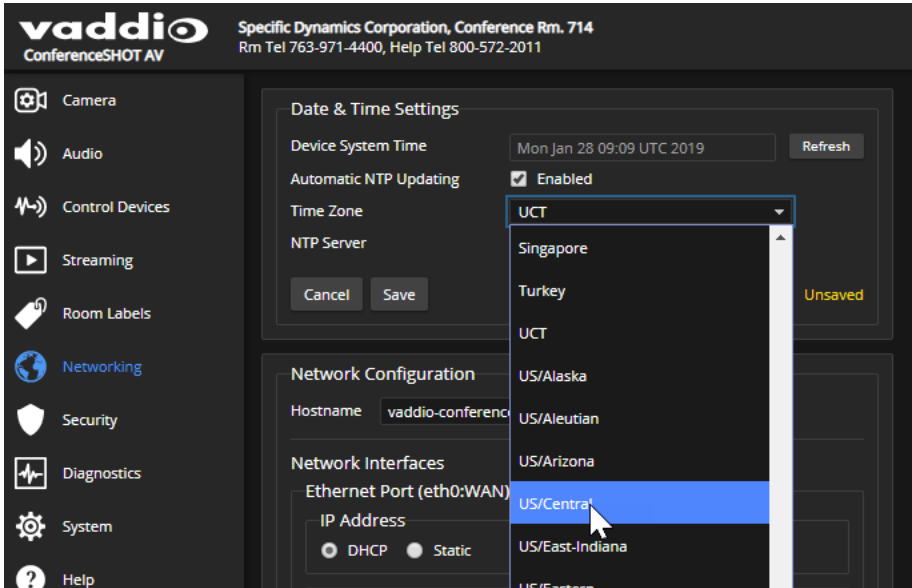
Specifying Time Zone and NTP Server

NETWORKING PAGE

Using automatic NTP updating ensures that the timestamps in the camera's diagnostic log are accurate. Specifying your time zone may make it easier to match logged events with other actions and external events.

1. To make the time zone and NTP server editable, enable Automatic NTP Updating.
2. Select the desired time zone from the list.
3. If desired, specify the NTP server to use. If you are not sure about this, use the default.

You may need to refresh the system time display.



Setting Passwords and Access

SECURITY PAGE

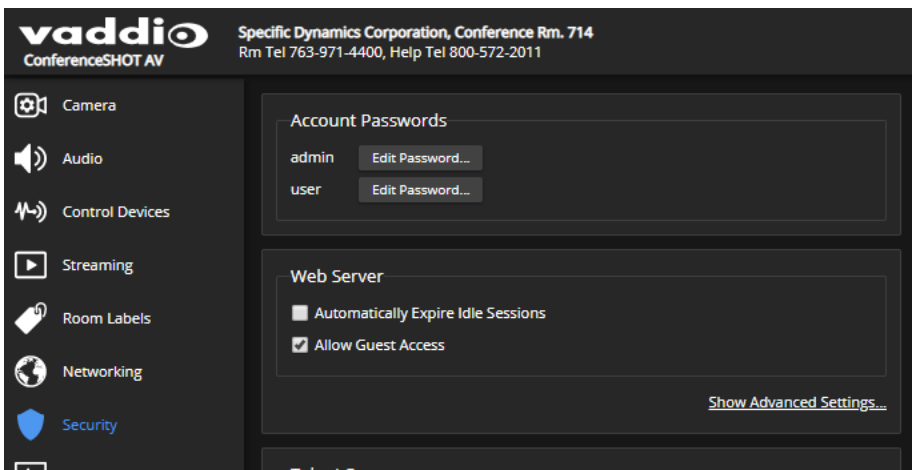
The Account Passwords and Web Server areas of the Security page provide basic security for the web interface:

- **Admin password** – Required for access to the admin pages of the web interface and for Telnet access to the device.
- **User password** – Required for access to the operator's page of the web interface if guest access is disabled.
- **Guest access** – Allows people to browse to the operator's page of the web interface without logging in. If guest access is disabled, no controls are available on the web interface until you log in. This is enabled by default.
- **Idle session expiration** – By default, inactive sessions expire after 30 minutes.

For cameras using firmware released before late 2019, the default admin and user passwords are both **password**.

Note

For best security, change the user and admin passwords from the default. Using the default passwords leaves the product vulnerable to tampering. Be sure you have a way to remember the passwords after changing them.



Configuring Other Security Settings

SECURITY PAGE

Security settings include:

- Allowing or disabling access via Telnet (by default, access via Telnet is enabled)
- Allowing or requiring HTTPS for web access (by default, HTTP is also permitted) and installing the SSL certificate
- Allowing or denying device discovery (allowed by default)

Note

Consult your network security specialist before changing any of these settings.

Enabling or Requiring HTTPS

SECURITY PAGE

By default, the web interface uses the HTTP protocol. You can configure the camera's web interface to require a secure HTTPS connection instead.

1. Select Show Advanced Settings. The advanced options open.
2. To switch to a secure HTTPS connection, select Switch to HTTPS.

Note

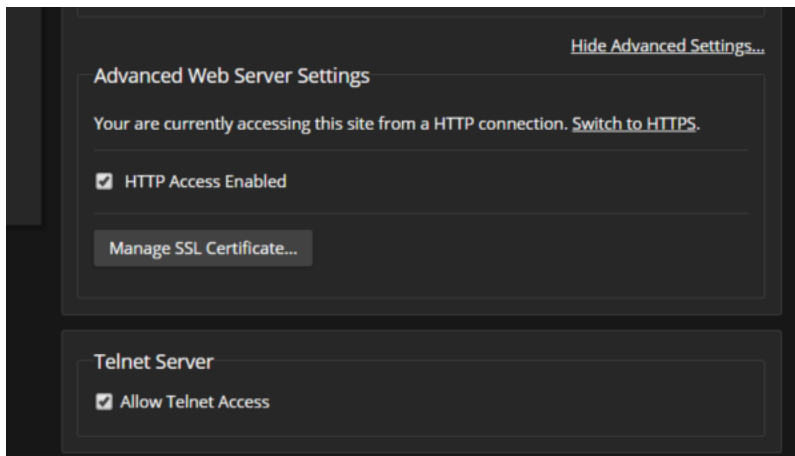
Your browser may present messages warning you that your connection is not secure, because the site's certificate is not valid. This happens when HTTPS is used but no SSL certificate is installed.

3. Work with your network security professional to install the camera's SSL certificate.

Caution

Consult your network security professional to manage the camera's SSL certificate. Do not make any changes in the Certificate or Private Key text boxes without guidance from your organization's network security professional.

4. To require HTTPS connections, clear the box labeled HTTP Access Enabled. The camera's web interface will only be available via an HTTPS connection.



Disabling Telnet Access

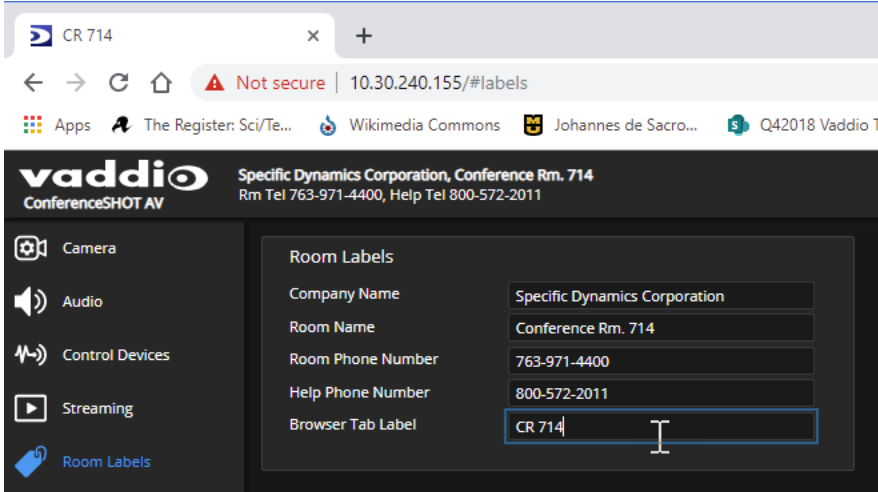
SECURITY PAGE

If your installation does not require camera access via Telnet, you may choose to disable the camera's internal Telnet server.

Adding Room Information to the Screen

ROOM LABELS PAGE

The information you enter on this page is displayed on every page of the web interface. In a multi-camera environment, you may also wish to specify what appears on the browser tab.



Saving (Exporting) or Restoring (Importing) a Configuration

SYSTEM PAGE, FIRMWARE TAB

You can import a configuration to several cameras if you need to configure them the same way. Cameras must be of the same model, and must have a compatible firmware version installed.

Note

If the camera is using an older firmware version, it may be unable import a configuration that was exported from a camera using a different version of firmware.

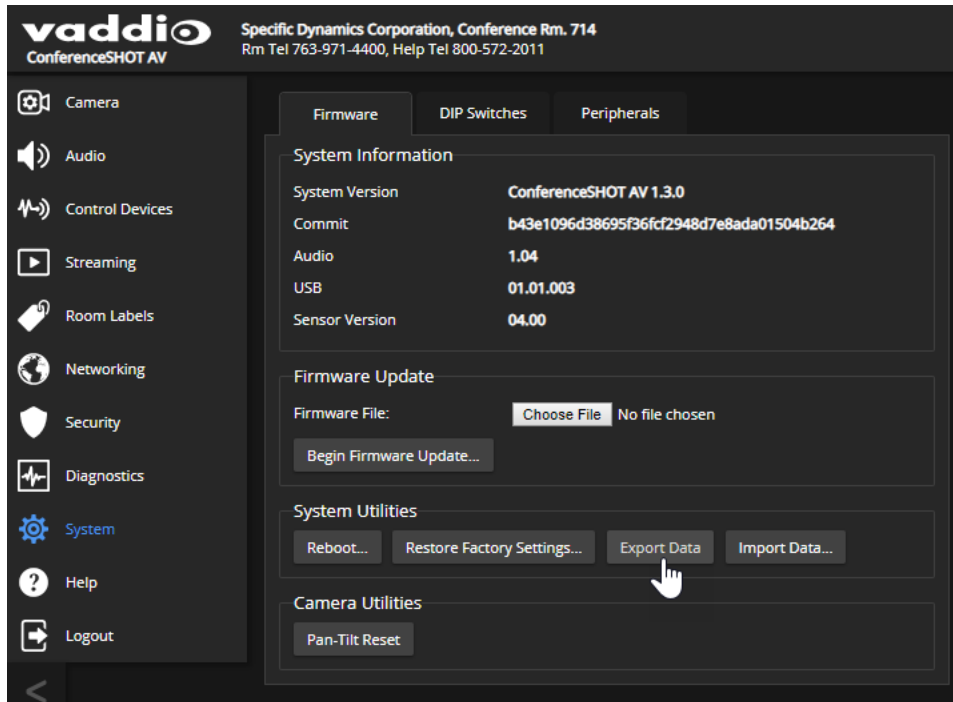
In the event that you need to restore a camera's factory default settings, you may want to export the configuration beforehand so that you can restore customized information.

Included	Not Included
Home	Color settings
Presets	Speed settings
NTP and time zone information	Hostname
Room Labels	Passwords and other security settings

Configuration data does not include security information or unique information such as hostname.

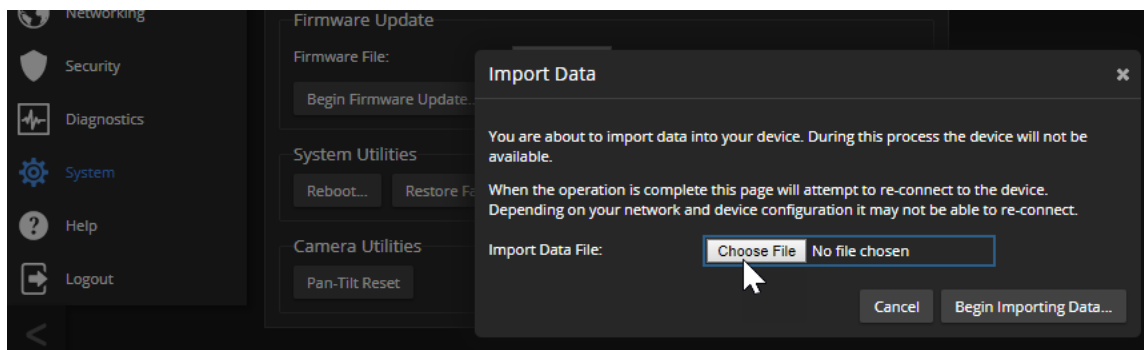
To export a configuration:

1. Configure the camera – set the time zone, create the room label, and store the presets you need.
2. Export the configuration (Export Data button). The export downloads to your computer as a .dat file. The filename is the camera's hostname.



3. When you are ready to restore the configuration, select Import Data. The web interface prompts you to browse to the .dat file that will be imported.

To copy the configuration to a different camera, do this step from the web interface of the camera being configured.



Installing a Firmware Update

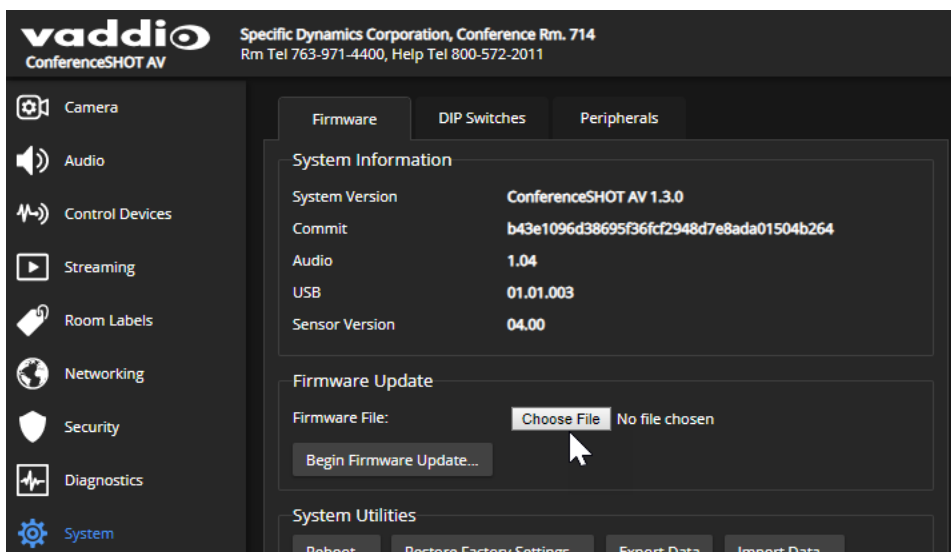
SYSTEM PAGE, FIRMWARE TAB

We release firmware updates from time to time. Some of them will be of interest to your organization; others might not be. The release notes provided with each update can help you to decide whether to install the update. The latest firmware and release notes are available on the product's web page at www.legrandav.com.

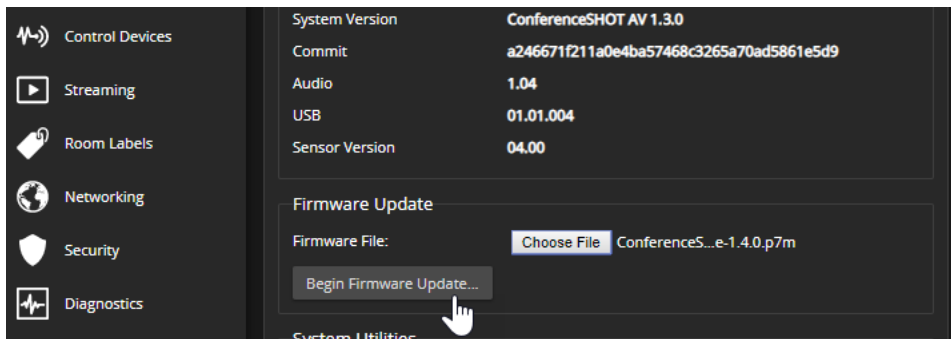
Caution

The camera must remain connected to power and to the network during the update. Interrupting the update could make the camera unusable.

1. Download the firmware and its release notes.
2. Select Choose File, then browse to the downloaded firmware and select it. The filename ends with .p7m.



3. Select Begin Firmware Update.



4. Read and understand the information in the Confirm dialog box.
5. Select Continue. A progress message box opens and the indicator light on the front of the camera turns yellow. If the update process presents warnings or error messages, read them carefully.

The camera reboots when the update is complete, and the web interface prompts you to log in again.

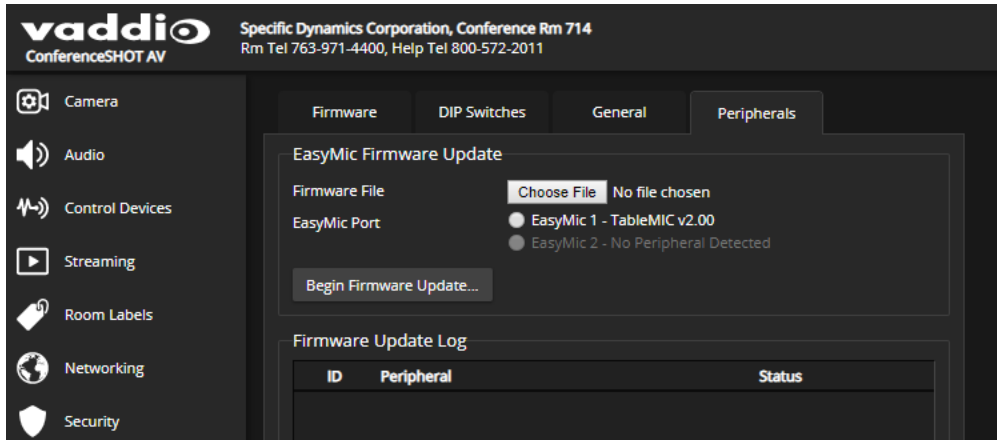
Contact Vaddio Technical Support if you encounter any problems with the update.

Installing a Firmware Update for a Connected Microphone

SYSTEM PAGE, PERIPHERALS TAB

The process to update microphone firmware is the same as for updating the camera.

1. Download the firmware and release notes from the legrandav.com website. Microphone firmware is available on the microphone product page and the pages for the camera bundles that include the microphone that you have.
2. Select Choose File and navigate to the firmware file you downloaded.
3. Select the appropriate EasyMic port (1 or 2). You can only update one microphone at a time; this selection specifies which EasyMic connector the data will flow through.

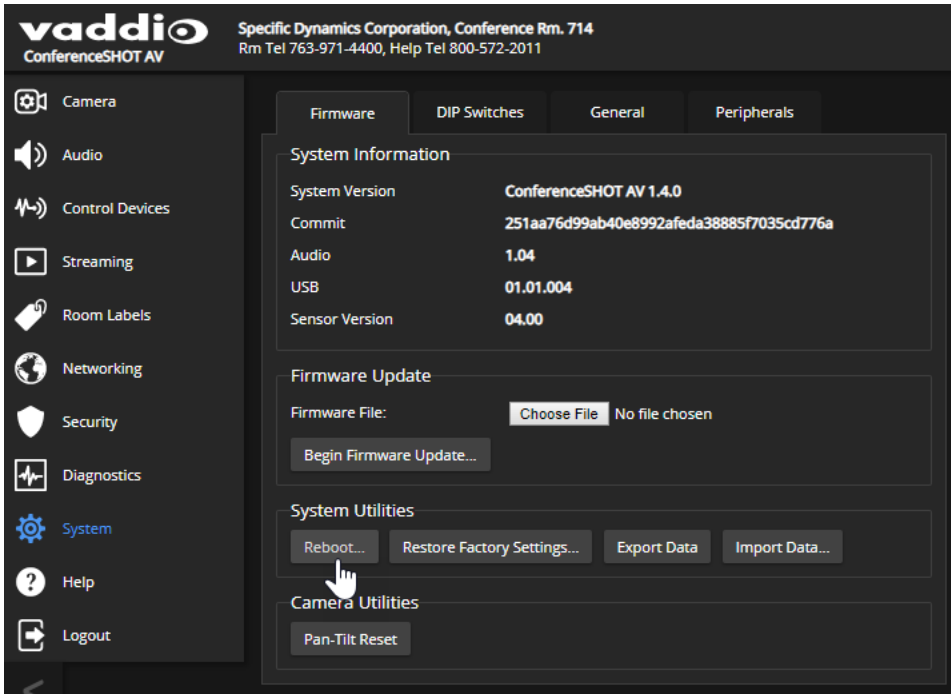


4. Select Begin Firmware Update.

Rebooting the Camera

SYSTEM PAGE, FIRMWARE TAB

This can help if the camera stops responding as you expect. In the System Utilities section, select Reboot.



Contacting Vaddio Technical Support

HELP PAGE

If you can't resolve an issue using your troubleshooting skills (or the [Troubleshooting](#) table in this manual), we are here to help.

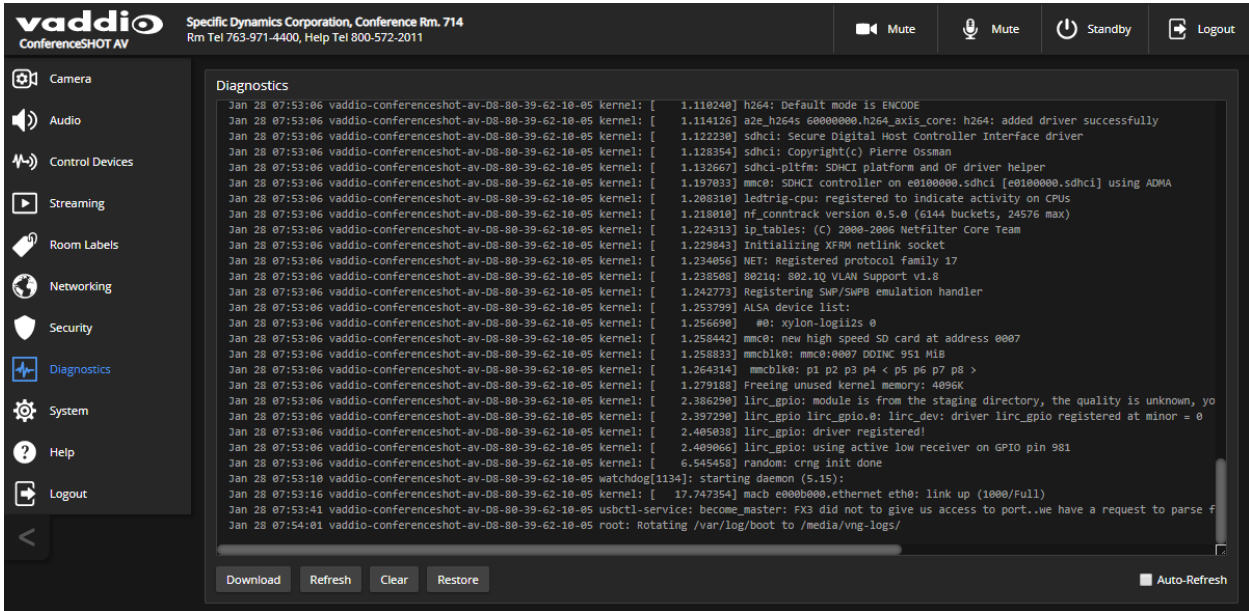
You'll find information for contacting Vaddio Technical Support on the Help screen.



Viewing Diagnostic Logs

DIAGNOSTICS PAGE

If you encounter a problem that you can't solve, your Vaddio technical support representative may ask you to download and email the log file available from the Diagnostics screen.



Configuring Camera Behavior

This chapter covers settings for defining how the camera performs in your environment – for example, streaming settings.

What do you need?	Go to this page
Camera operation <ul style="list-style-type: none"> ■ Preset positions ■ Color and lighting settings ■ Focus ■ Speed adjustments 	Camera
Speaker and microphone settings	Audio
Programmable behaviors	Control Devices
USB and IP streaming settings	Streaming
Other camera behaviors <ul style="list-style-type: none"> ■ IR frequency – respond to the IR remote as camera 1, 2, or 3 ■ Normal or super-wide mode ■ Image flip ■ UVC-Compliant or Client Custom USB streaming ■ LED behavior 	System (has multiple tabs)

Setting the Home Position and Other Preset Shots

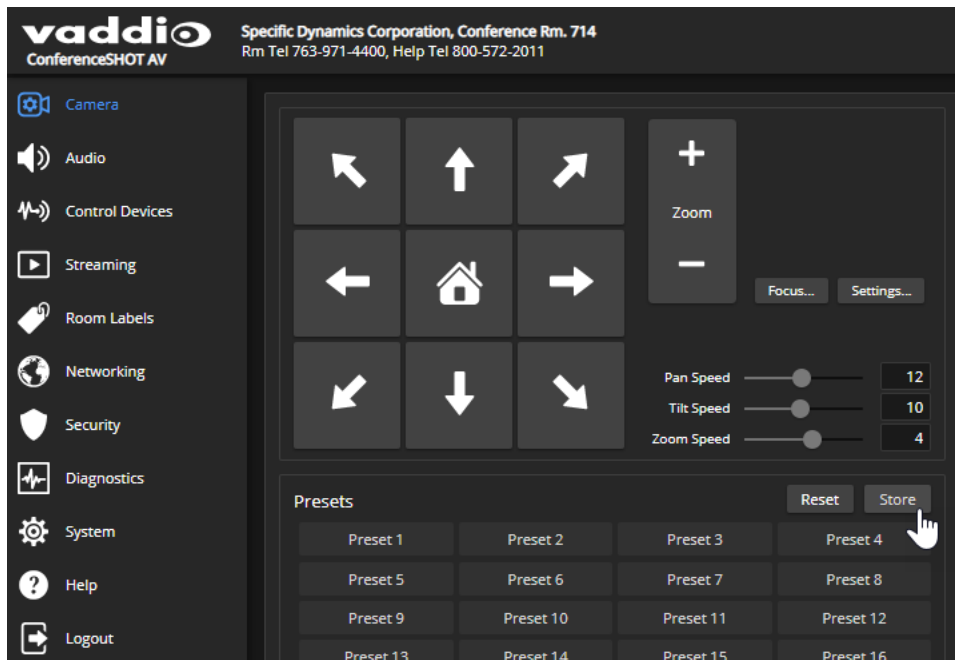
CAMERA PAGE

Presets are saved shots. Each preset includes pan, tilt, zoom, and (optionally) color settings. When you reboot the camera or bring it out of standby, it returns to the Home preset.

Home and presets 1 through 6 are available with the IR Remote Commander; the others are only available from the web interface.

To store a preset:

1. Set up the shot.
2. In the Presets area, select Store to open the Store Preset dialog.

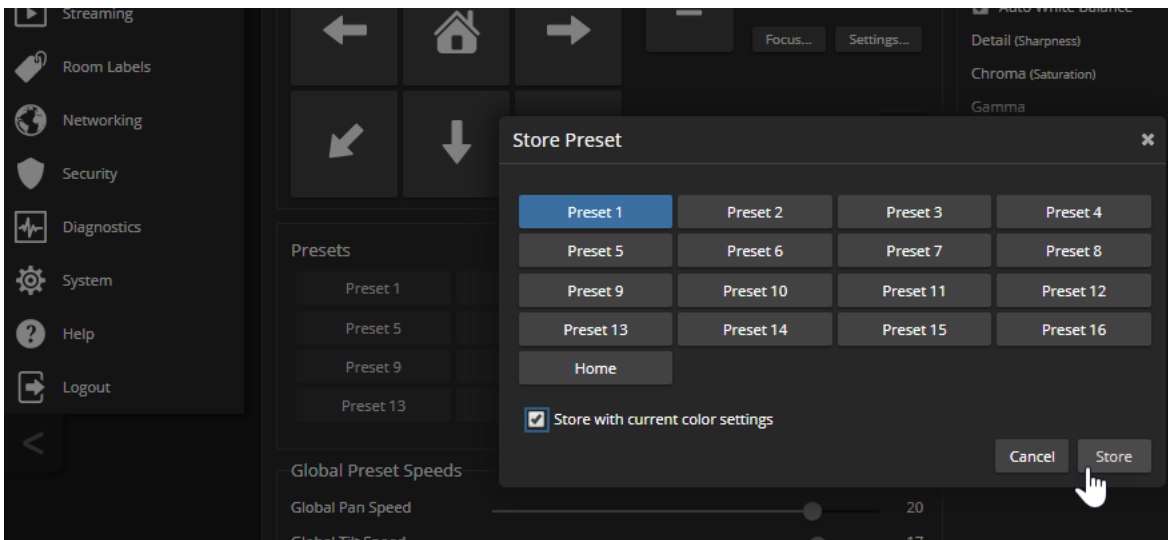


3. Select the preset to store. The preset button changes color.

Note

The Store Preset dialog box does not indicate whether presets have already been defined, but the main display dims the preset buttons if they have no preset information stored.

4. To save the current color settings along with the camera position, check Store with Current Color Settings.
5. Store the preset.



Renaming Presets

CAMERA PAGE

You can rename presets to identify the shots. This also helps you identify and avoid overwriting stored presets when you store a new preset.

Right-click the button for the custom scene or preset, and edit the label.



Adjusting the Color and Image Quality Settings

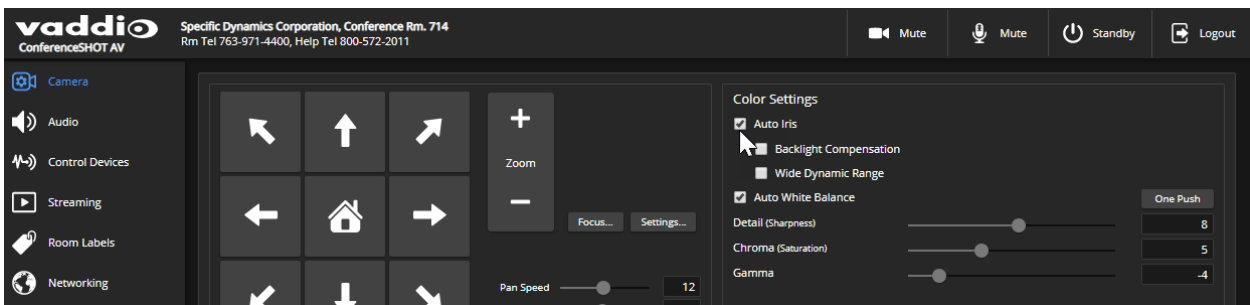
CAMERA PAGE

Fine-tune the color and lighting as needed using the Color Settings controls.

- **Auto Iris** allows the camera to compensate automatically for the light level. Clear this box to adjust iris and gain manually.
- **Backlight Compensation** (available when Auto Iris is selected) reduces contrast to adjust for bright light behind the main subject of the shot. This setting can't be used with Wide Dynamic Range.
- **Wide Dynamic Range** (available when Auto Iris is selected) increases the contrast between the brightest and darkest areas. This setting can't be used with Backlight Compensation.
- **Auto White Balance** adjusts color automatically. Clear this box to adjust red gain and blue gain manually.
- **Red Gain** and **Blue Gain** (available when Auto White Balance is not selected) provide manual color adjustment.
- **Detail** adjusts the image sharpness. If the video looks grainy or "noisy," try a lower Detail setting.
- **Chroma** adjusts the color intensity.
- **Gamma** adjusts the range (grey density) between bright areas and shadows.

The [Color Adjustment Quick Reference](#) may be helpful.

If you make a change that you don't like, start over by selecting and then deselecting Auto White Balance.








Lighting and Image Quality Quick Reference

Here are some tips for using the color settings for lighting and image quality.

What do you need to correct?	Make this adjustment:
The image is too dark	Increase Iris (lower F-stop value)
	Increase Iris Gain
The image looks washed out or faded	Decrease Iris (higher F-stop value)
	Decrease Iris Gain
	Increase Chroma
	Decrease Gamma
The subject is silhouetted against a bright background	Enable Backlight Compensation
Highlights and shadows look right, but mid-tones are too dark.	Increase Gamma
Shadows are too dark	Enable Wide Dynamic Range (WDR)
	Decrease Gamma
The image looks grainy	Decrease Detail
	Decrease Iris Gain
"Soft focus" effect; the image looks unrealistically smooth	Increase Detail

Color Adjustment Quick Reference

Here are some tips for using the color-related CCU settings.

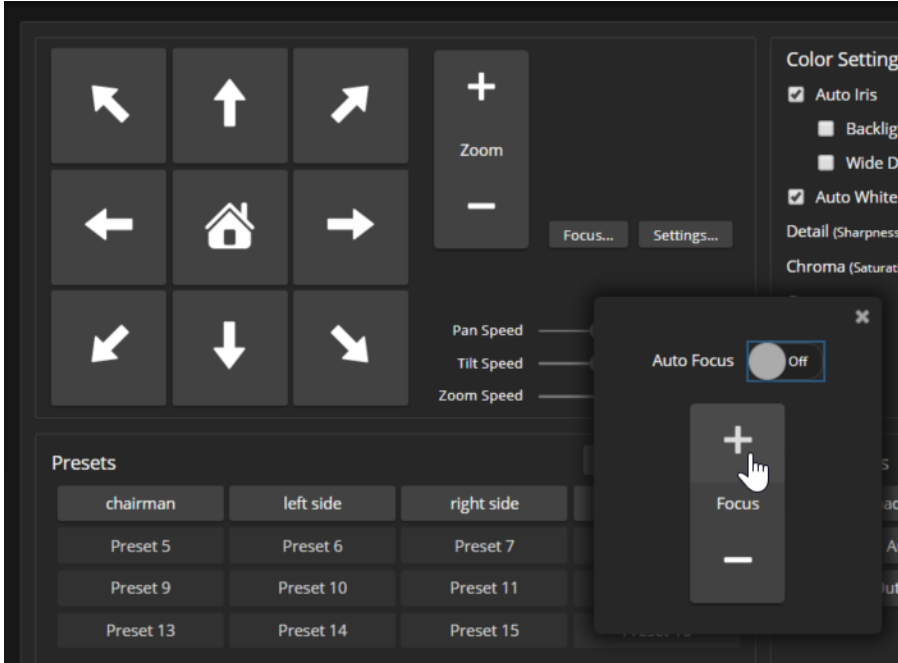
What do you need to correct?	Make this adjustment:			
Colors look less vivid than they should	Increase Chroma			
Colors look too vivid	Decrease Chroma			
Colors look wrong; white objects do not appear white	Enable Auto White Balance			
	One Push White Balance			
	Disable Auto White Balance and... <ul style="list-style-type: none"> ■ adjust Red Gain (decrease for less red, increase for less green) ■ adjust Blue Gain (decrease for less blue, increase for less yellow) 			
Too much red	Not enough red	Too much blue	Not enough blue	Balanced
				

If you are adjusting for lighting conditions that are likely to recur, you can store presets with color settings.

Adjusting the Focus

CAMERA PAGE

Open the Focus control to select Auto-focus, or set manual focus with the + (near) and – (far) buttons. The + and – buttons only work when Auto Focus is not selected.



For users who are not logged in as admin, focus control is available via the IR Remote Commander.

Speed Adjustments

CAMERA PAGE

The following speed adjustments are available:

- Manual pan, tilt, and zoom speeds – Used when you control camera movements with the IR Remote Commander or the arrow buttons in the web interface
- Global Preset Speeds – Separate pan, tilt, and zoom speeds used for movements between presets.

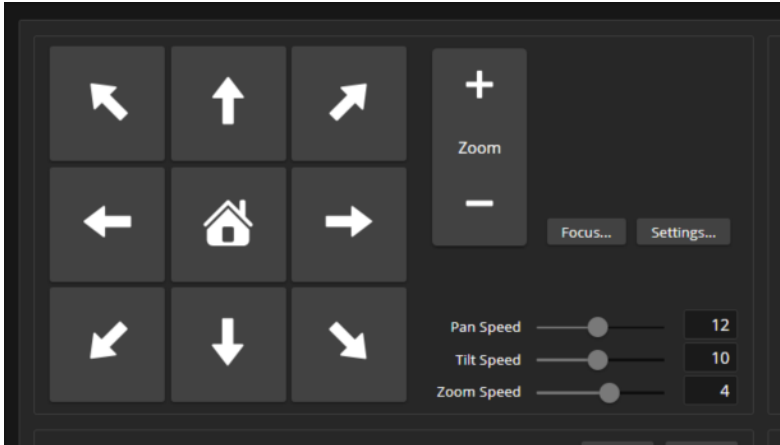
Setting the Speeds for Manual Movements

CAMERA PAGE

The Pan Speed, Tilt Speed, and Zoom Speed sliders control how fast the camera moves in response to the direction and zoom controls on the IR remote and in the web interface.

To set speeds for movements using the arrow buttons:

Use the speed sliders to adjust the speed of movements that you control with the buttons for pan, tilt, and zoom. For tight shots, slower is usually better.



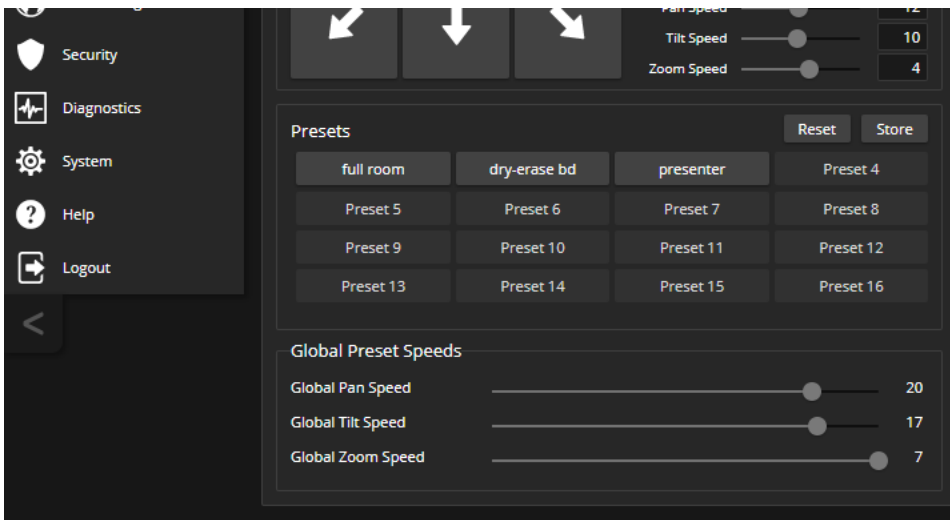
Setting the Speeds of Movements to Presets

CAMERA PAGE

The Pan Speed, Tilt Speed, and Zoom Speed sliders in the Global Preset Speeds control how fast the camera moves to presets.

To set speeds for movements to presets:

In the Global Preset Speeds section, set the speeds for movements to presets.

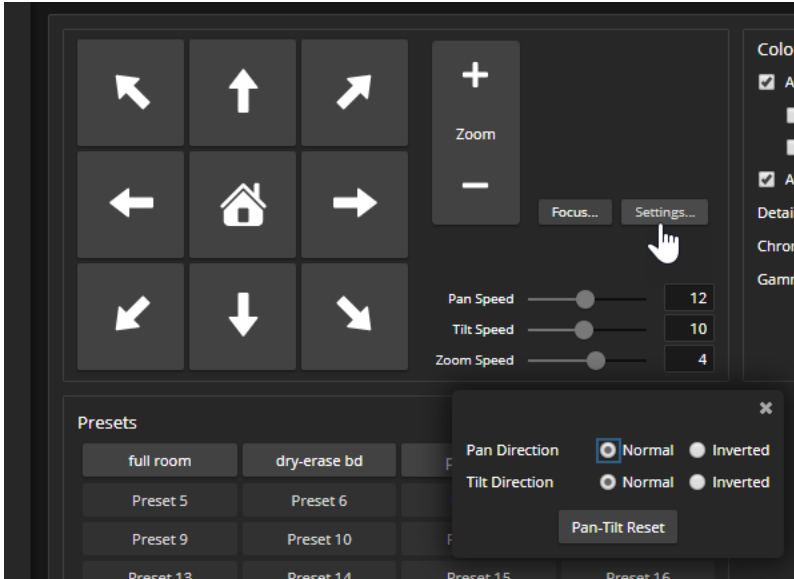


Setting the Direction for Camera Movements

CAMERA PAGE

By default, the arrow buttons on the remote and in the web interface show the direction you would see the camera move if you were looking the same direction as the camera. If a person facing the camera is controlling it with the remote, using the right arrow pans the camera to the person's left.

To make the arrow buttons indicate camera movement from the perspective of a person facing the camera, open the Settings control and invert the pan direction.



Configuring Streaming Behavior

Conferencing applications use *USB streaming*. The camera's USB stream can be viewed using the computer connected to the camera, either in a conference or using a media player.

Two *IP streaming* protocols are available: RTSP and RTMP.

- *RTSP streaming* delivers an IP stream that people can access from your network using a media player. This is the camera's default protocol for IP streaming.
- *RTMP streaming* sends a stream to a content service provider such as YouTube. No local preview is available. To use RTMP streaming, you must have an account with a streaming service.

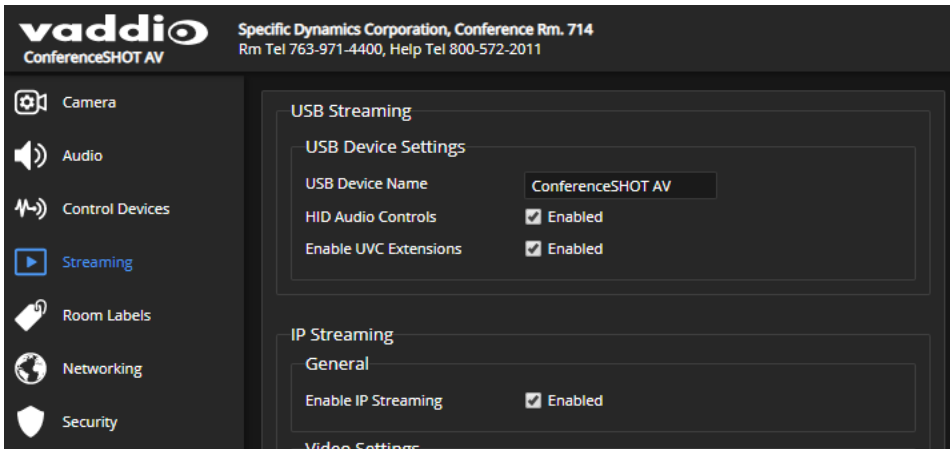
Note

Your camera's web interface may differ slightly from the images in these procedures.

Enabling or Disabling Streaming

STREAMING PAGE

IP streaming is enabled by default, and the RTSP stream is available for viewing on your network unless you disable IP streaming or switch to RTMP. USB streaming is available whenever the camera is connected to a computer.



Viewing a Stream

To view the RTSP stream:

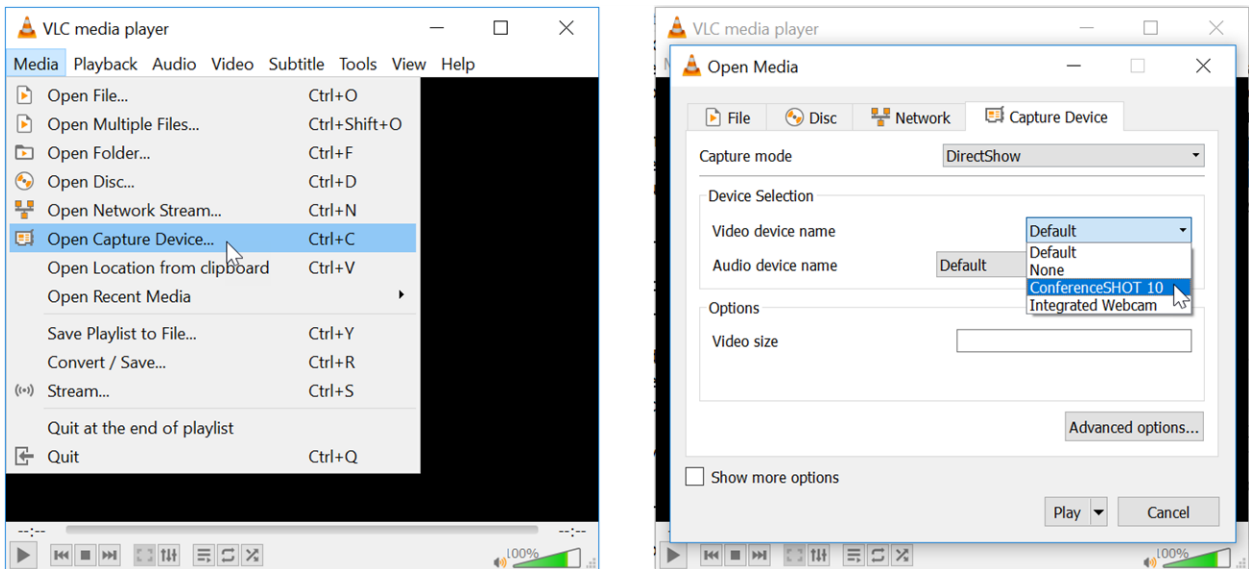
1. Open a stream viewer such as VLC Media Player.
2. Select "Network stream" or your viewer's equivalent option.
3. Copy the streaming URL from the camera's Streaming page and paste it into the viewer as the URL for the network stream.

To view the USB stream:

Do one of these things:

- Start or join a conference.
- Open a stream viewer and select the camera as the video capture device.

The image below shows how you would select a ConferenceSHOT 10 camera as the capture device for VLC Media Player.



Configuring USB Streaming

STREAMING PAGE

These settings affect how the camera works with soft conferencing applications.

To change the way the camera shows up in your soft client's camera selection list:

Edit the USB Device Name.

To allow conferencing applications to control the audio:

Check the Enabled box for HID Audio Controls.

To allow conferencing applications to control the camera:

Check the box marked Enable UVC Extensions.

Note

USB streaming resolution and frame rate are automatically negotiated between the camera and the conferencing application.

Setting up IP Streaming in Easy Mode

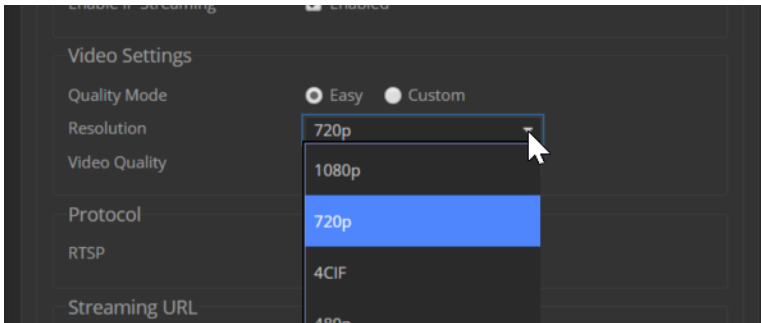
STREAMING PAGE

Note

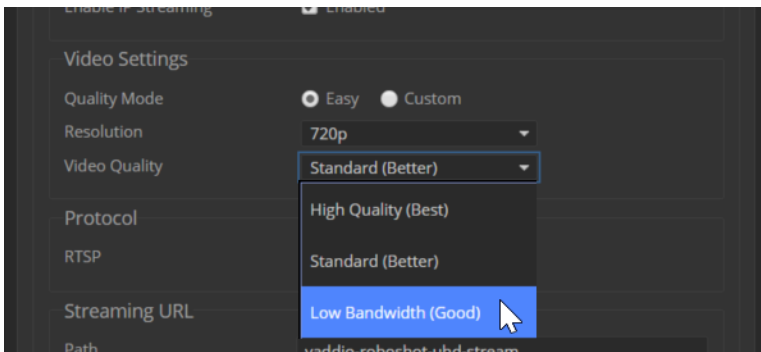
Consult your network specialist when setting up IP streaming, to be sure that you select settings that are appropriate for the network.

If you are not sure about these settings, start with the defaults.

1. Select Easy Quality Mode.
2. Select the desired IP streaming resolution. This determines the size of the window in which the stream is displayed.



3. Select Video Quality.



4. Save your changes.

Setting up IP Streaming in Custom Mode

STREAMING PAGE

Note

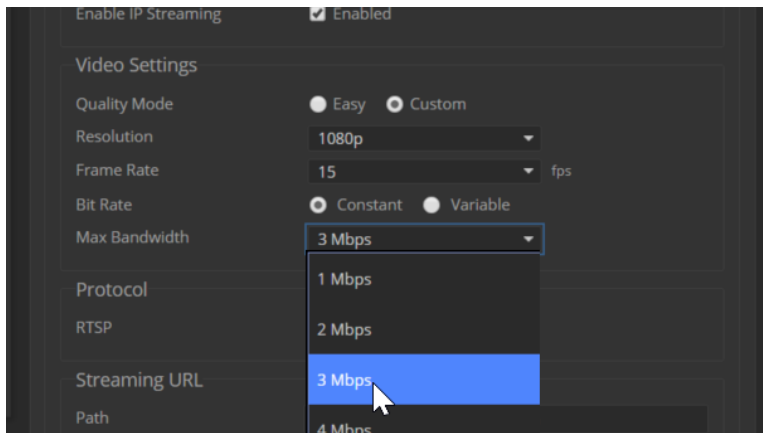
Consult your network specialist when setting up IP streaming, to be sure that you select settings that are appropriate for the network.

1. Select Custom quality mode.
2. Select the desired resolution.
3. Select the desired frame rate.

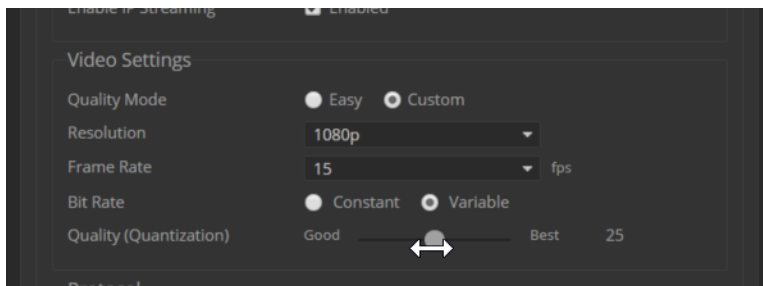
Note

Some combinations of resolution and frame rate are not valid, and will generate notifications.

4. Select Constant or Variable Bit Rate.
5. Constant Bit Rate only: Set Max Bandwidth.



6. Variable bit rate only: Set the Quality (Quantization) slider.



7. Save your changes.

RTSP Streaming Protocol and URL

STREAMING PAGE

RTSP is the default streaming protocol. When IP streaming is enabled, the RTSP stream is automatically available at the streaming URL shown.

Consult your IT department before changing these settings.

RTSP port: Vaddio strongly recommends using the default RTSP port number.

Path: The portion of the streaming URL that appears after the IP address. You may wish to change this to help identify the stream source – for example, `demo-studio-3`.

URL: The location where the stream can be viewed. This will change if you edit the path.

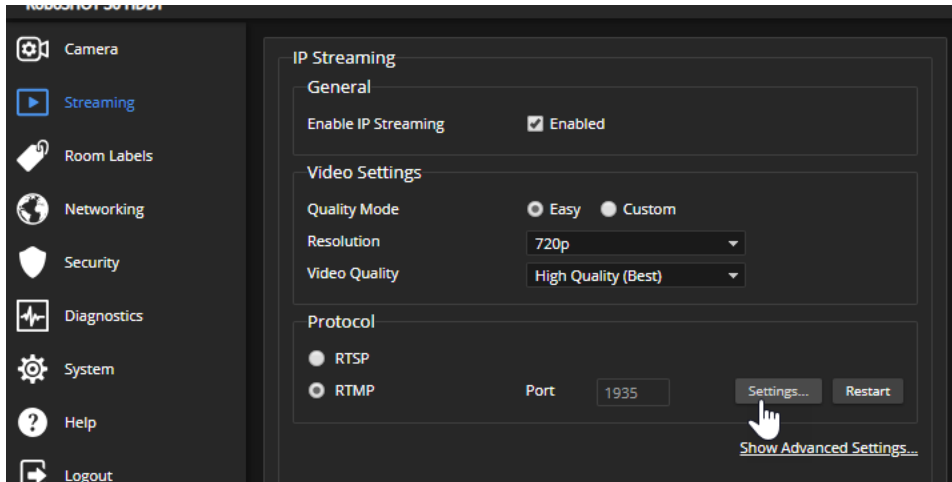
Configuring RTMP Streaming

STREAMING PAGE

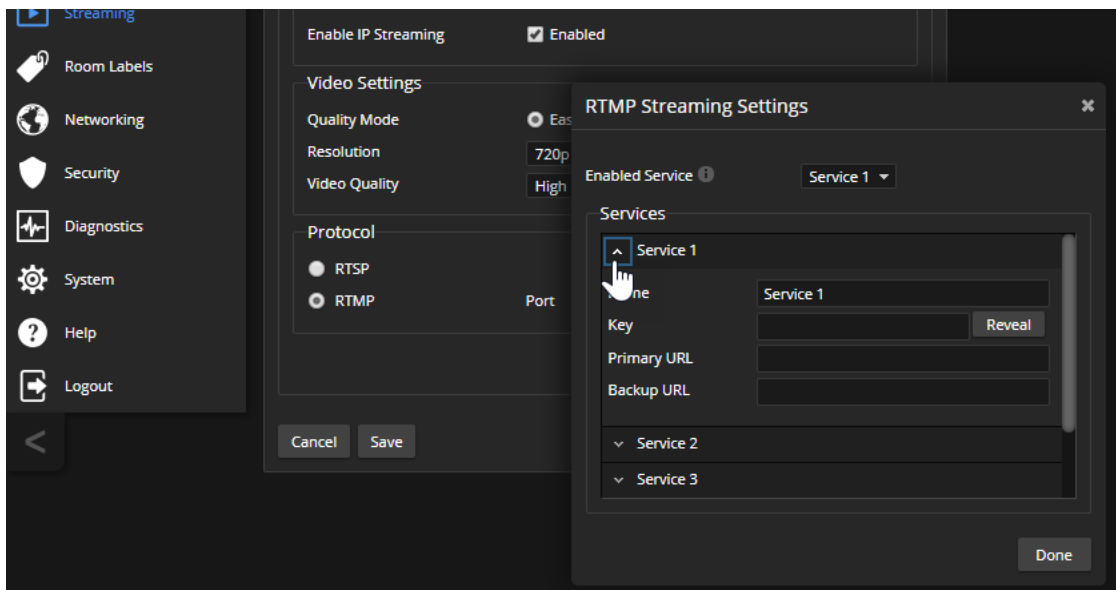
To use RTMP streaming, you must have an account with a streaming service.

To configure an RTMP streaming service:

1. Select RTMP streaming, and select Settings.



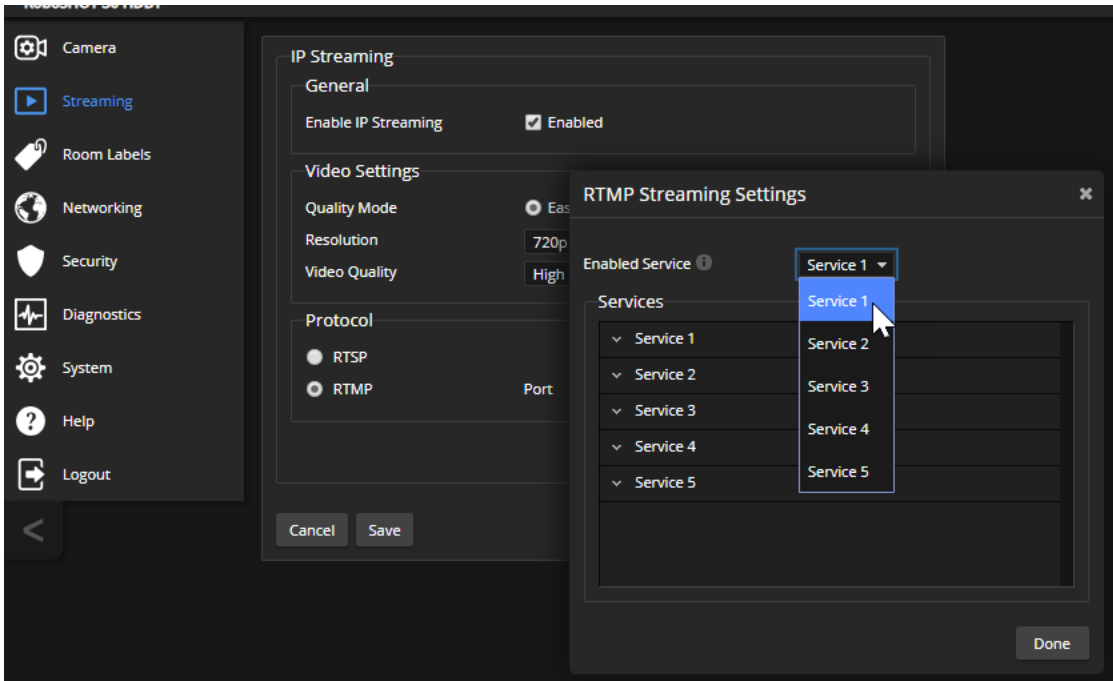
2. Expand the information box for the service.



3. Enter the name of the service.
4. Paste in the key and URL(s) provided by the service.

To select the enabled RTMP streaming service:

Expand the list of available streaming services, and select the one to use.



Note

When RTMP streaming is selected and a service is configured, the camera streams to that service until you stop the stream.

Changing MTU

STREAMING PAGE

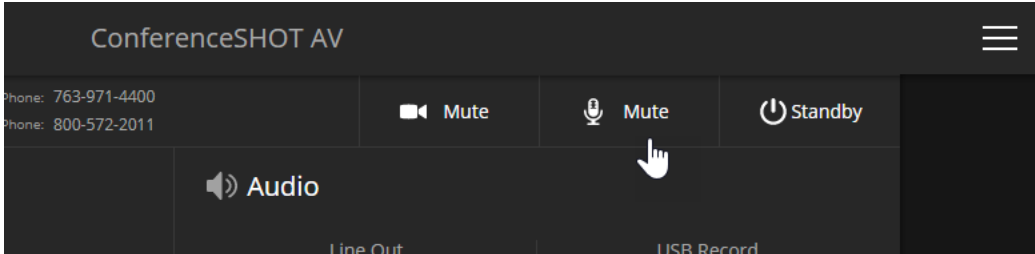
The default packet size for streaming is 1400. Do not change this except in consultation with your network administrator.

Managing Audio

The web interface provides separate controls for each of the audio inputs (microphones 1 and 2, USB playback) and outputs (line out, IP stream, and USB record).

Muting All Audio Inputs Together

Use the audio mute button at the top of any page of the web interface.



Controlling Volume and Muting Per Input or Output

AUDIO PAGE

To manage individual audio inputs or outputs:

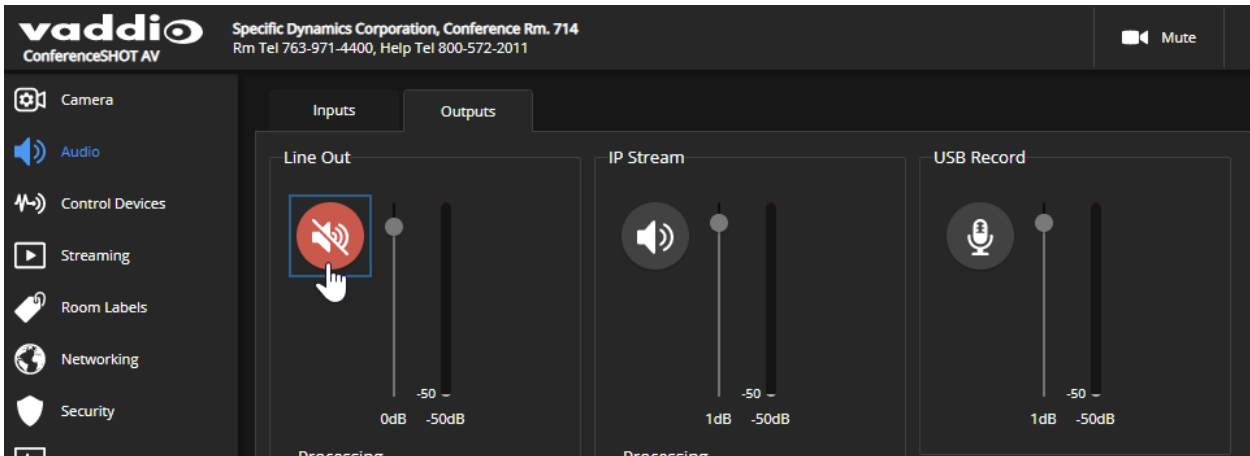
Use the slider for the appropriate audio input or output to set the volume. The audio level meter and numeric value can be helpful.

Note

For best performance with most computers, we recommend setting the USB Record volume high.

To mute individual inputs or outputs:

Use the button to mute the desired audio input or output.



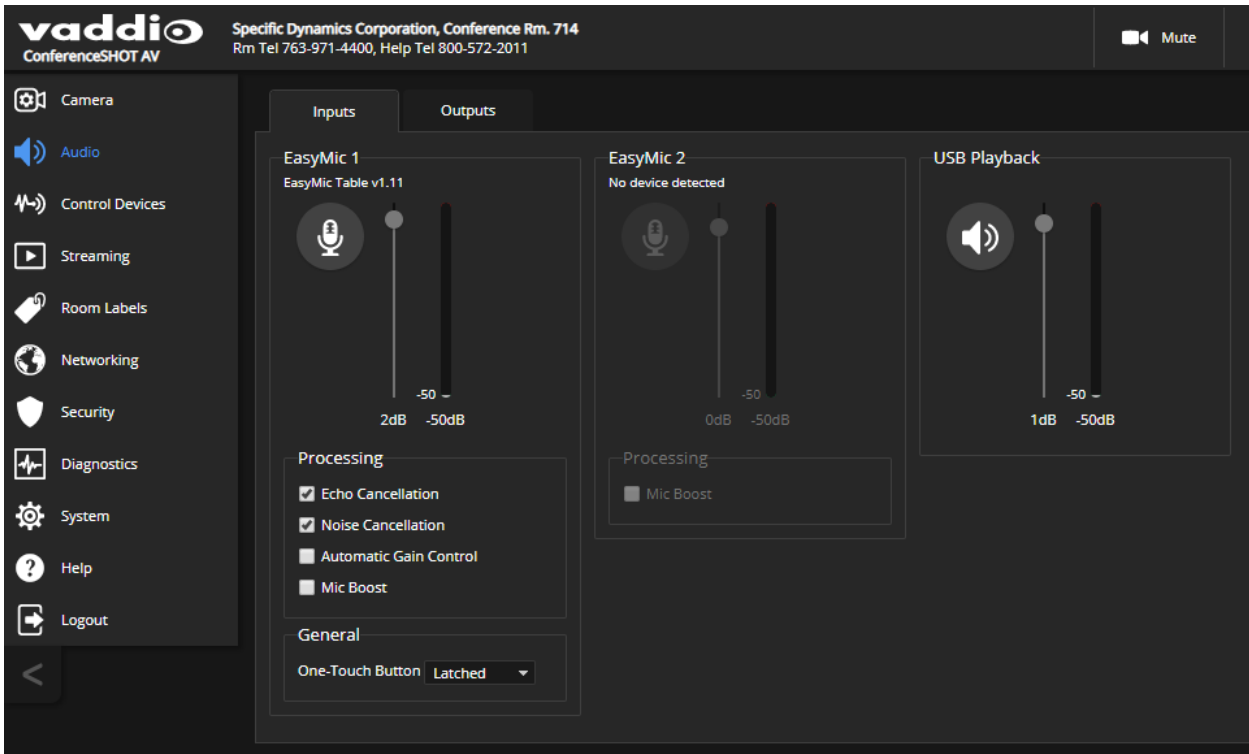
Fine-Tuning Microphone Performance

AUDIO PAGE, INPUTS TAB

To adjust microphones for best far-end audio performance:

Check or clear the checkboxes for the desired adjustments:

- **Echo Cancellation** – Keeps microphones from feeding the speaker output back into the system. Under most circumstances, echo cancellation is desirable.
- **Noise Cancellation** – Suppresses ambient noise such as the conference room's heating/air conditioning.
- **Automatic Gain Control** – Adjusts gain to compensate for differences in the volume of people's voices.
- **Mic Boost** – Provides a 3 dB boost.



Fine-Tuning Speaker Performance

AUDIO PAGE, OUTPUTS TAB

To reduce the dynamic range from the connected speaker:

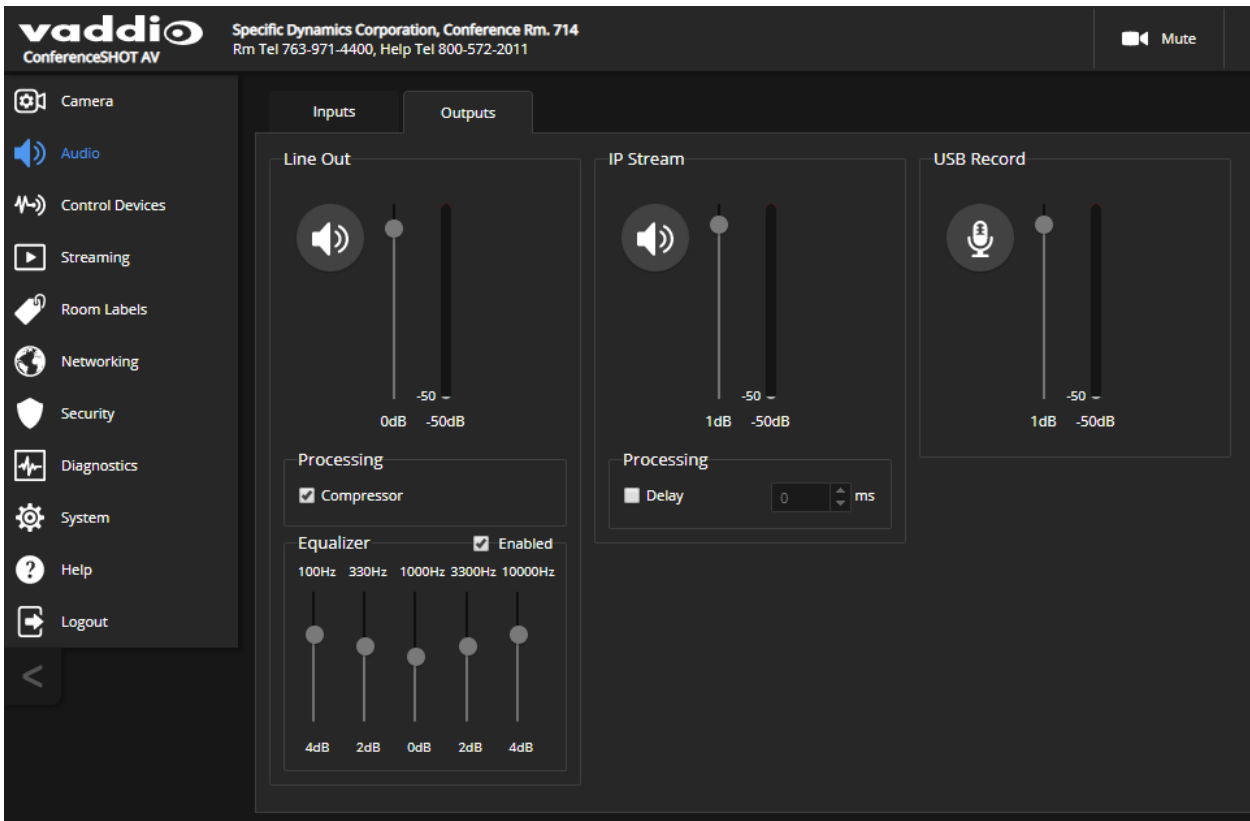
If some people on the far end are inaudible while others are too loud, check the Compressor box.

To adjust for more natural sound:

Use the equalizer to adjust specific frequency ranges.

To sync the sound with the video in the IP stream:

Check the Delay box and enter a delay value in msec.



Setting up Macros and Triggers

Macros are sequences of commands. Triggers register events or state changes that can be associated with macros, to make them run. For example, the One Touch (Home) button on a TableMIC is a trigger.

When you associate a macro with a trigger, you must specify whether it runs when the trigger turns on, or when it turns off – so you can associate two macros with each trigger, one to run when the trigger is activated, and one to run when the trigger is turned off.

A trigger may be either hardware, such as the Home button on a tabletop microphone, or software. Software triggers allow you to program custom functions for third-party control devices, such as defining the buttons on a conference room touch-screen. Hardware triggers (labeled One Touch in the web interface) allow you to define responses to connected Vaddio trigger devices such as TableMIC microphones or StepVIEW mats.

The macro can only run successfully if all the commands in the macro are able to run successfully. For example, if the macro sends the camera to a preset position, that preset must be defined. Refer to the [Telnet Serial Command API](#) section for a full list of commands.

Writing and Editing Macros

CONTROL DEVICES PAGE, MACROS TAB

To define a macro:

1. Enter a name in the Macro Editor's Name field.
2. Enter one or more Telnet commands in the editing area.
3. Optional but strongly recommended: Use the Test button to check your work while you are writing the macro.
4. Save your work when you are finished, or select New to start over.

Note

If the macro has external requirements, it will only run properly if those requirements are met. For example, if the macro includes a command to move to a preset, the applicable preset must be stored before the macro can run successfully. I know I'm repeating myself, but this is important.

vaddio Specific Dynamics Corporation, Conference Rm. 714
ConferenceSHOT AV Rm Tel 763-971-4400, Help Tel 800-572-2011

Camera Audio Control Devices Streaming Room Labels Networking Security Diagnostics System Help Logout

Macros Triggers

ID	Name	Test	Edit	✕
1	Preset 1	Test	Edit	✕
2	Preset 2	Test	Edit	✕
3	cam 1 preset 16	Test	Edit	✕

Macro Execution Log

ID	Macro
----	-------

Macro Editor

Name: Camera dance

```
camera tilt up 3
camera pan left 3
camera pan right 3
camera pan left 3
camera pan right 3
camera tilt down 5
camera tilt up 4
camera home
```

Cancel Save Save As... Test Unsaved New Cancel All Clear Finished

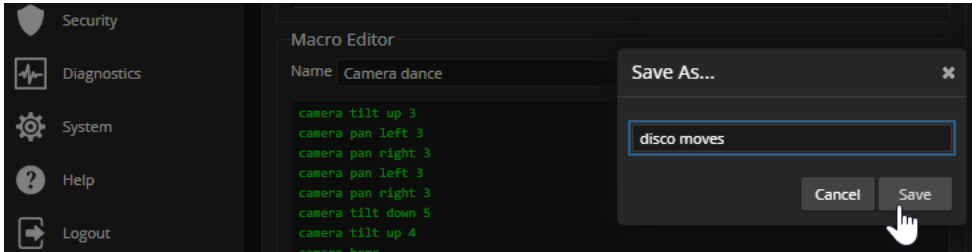
Trigger Status

To edit an existing macro:

Select the Edit button associated with the macro, make your changes in the Macro Editor, and save your work.

To create a new macro based on an existing one:

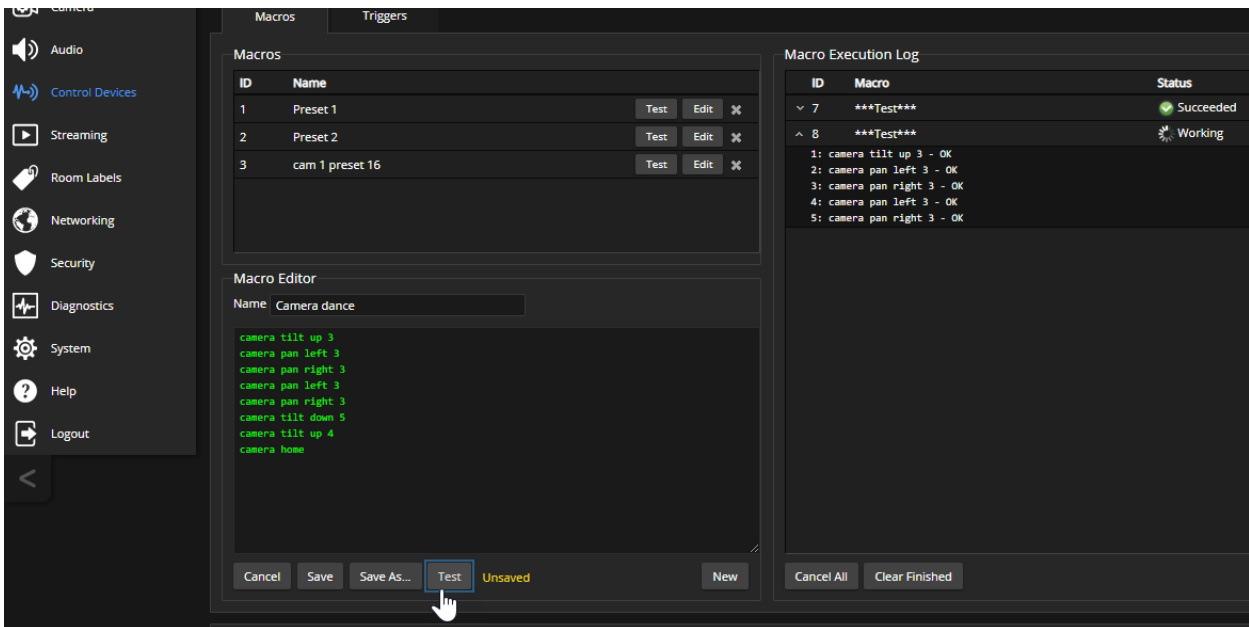
Select the Edit button for the existing macro to open it, and use the Save As button to give it a new name. Then select its Edit button again, and make the desired changes.



Testing Macros

CONTROL DEVICES PAGE, MACROS TAB

The Macro Editor has a Test button to run a macro while you are editing it. You can also test macros after saving them. The Macro Execution Log shows the result of each test.



Assigning Macros to Triggers

CONTROL DEVICES PAGE, TRIGGERS TAB

A trigger may be associated with a macro that runs when the trigger is on, one that runs when the trigger is off, or one of each.

To assign a macro to a trigger:

Do at least one of these things:

- Select a macro in the Execute Macro on Enter field. This macro will start when the trigger turns on.
- Select a macro in the Execute Macro on Exit field. This macro will start when the trigger turns off.

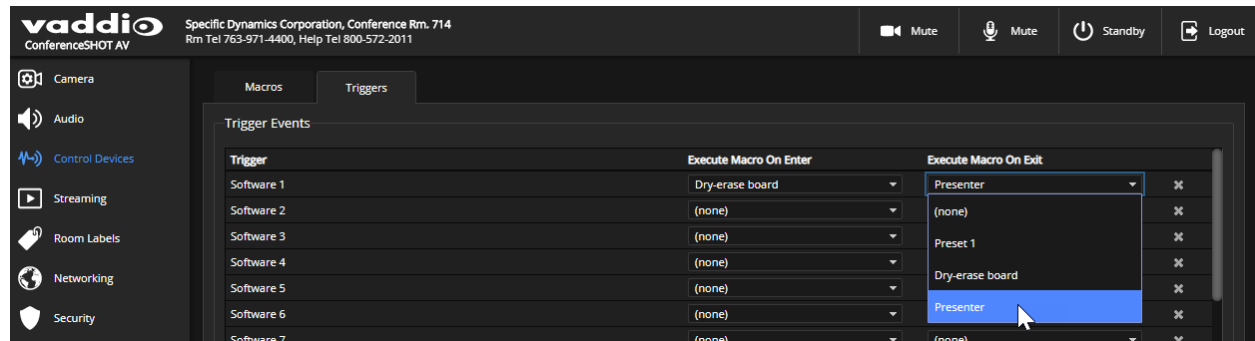
Right-click a trigger label or test button to rename the trigger.

Example: Assigning a single macro to the Home button of the connected TableMIC microphone:

1. On the Macros tab of the Control Devices page, name and create the macro. Then test, debug, and save it.
2. If you want this macro to run every time you tap the TableMIC microphone's One Touch button, go to the Audio page and set the One Touch Button mode to Momentary. Otherwise it will run *every other time* you tap the button.
3. On the Triggers tab of the Control Devices page, locate One Touch in the list of trigger events, and select the macro from the list of available actions for Execute Macro On Enter.

To remove macro assignments from a trigger:

Select the X on that trigger's row. This is equivalent to setting both macros to (none).



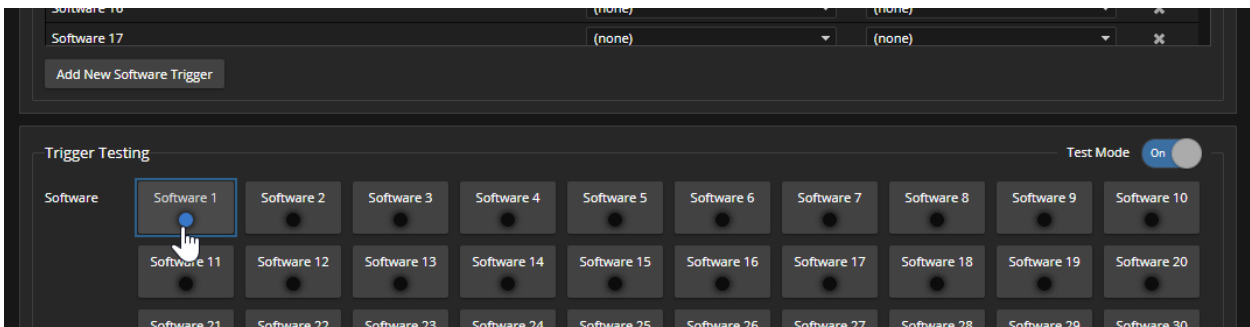
Testing Triggers

CONTROL DEVICES PAGE

Just as it can be helpful to test macros when you write them, it can also be helpful to test triggers when you assign macros to them. The Trigger Testing section is available from both tabs of the Control Devices page.

To test a trigger:

1. Set Test Mode on. The web interface displays a notification.
2. Select the trigger to run the macro associated with turning the trigger on.
3. Select the trigger again to run the macro associated with turning the trigger off, if there is one.
4. Turn off Test Mode when you finish testing.



Note

Triggers are not available to the control device when Test Mode is selected.

Example: Assigning a Function to the Connected Microphone's Home Button

CAMERA PAGE, CONTROL DEVICES PAGE

In this example, TableMIC microphones are connected to both of the camera's EasyMic ports. The team that uses the conference room most frequently has requested that the Home button on the remote and the Home buttons on the two microphones should all do the same thing.

Tasks to accomplish this:

1. **Camera page:** Set up the shot and color adjustments, and store the Home preset.
2. **Control Devices page, Macros tab:** Create, name, test, and save a new macro that runs the `camera home` command. For this example, we'll assume you name it Home.
3. **Control Devices page, Triggers tab:** For the OneTouch 1 trigger, click the box in the Execute on Enter column and select the Home macro from the list. Do the same thing for the OneTouch 2 trigger.

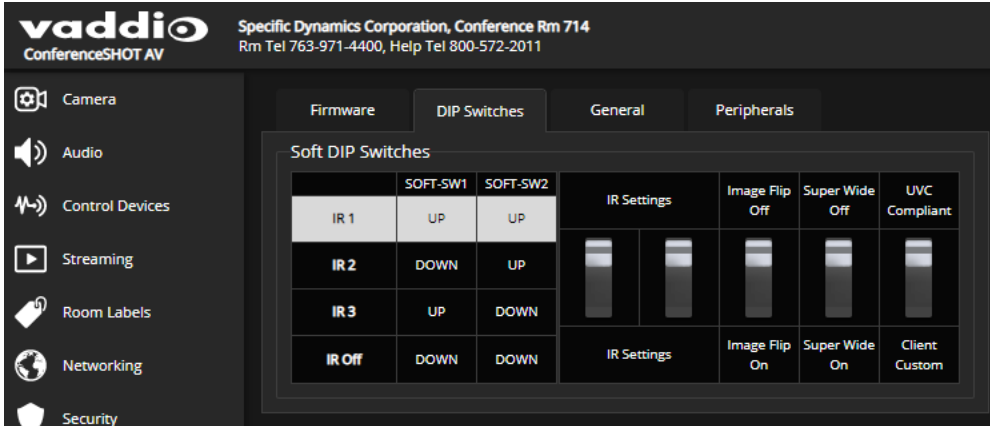
Additional Camera Settings

CAMERA PAGE, CAMERA SETTINGS BUTTON

SYSTEM PAGE, DIP SWITCHES TAB

To see the camera's current soft DIP switch settings and configure certain camera behaviors, do one of these things:

- Select the Camera Settings button on the Camera page.
- Select the DIP Switches tab of the System page.



IR Frequency Selection: If there are multiple cameras in the room, use **switches 1 and 2** to configure each with a different IR frequency to allow the IR Remote Commander to control them independently. Then use the Camera Select buttons at the top of the remote to select the camera you want to control.

- SW1 and SW2 up: IR frequency 1
- SW1 down, SW2 up: IR frequency 2
- SW1 up, SW2 down: IR frequency 3

Image Flip – If mounting the camera upside-down, set IMAGE FLIP ON. This orients the video image correctly and sets the tilt motors to respond appropriately to tilt commands from the remote, web interface, and connected control devices.

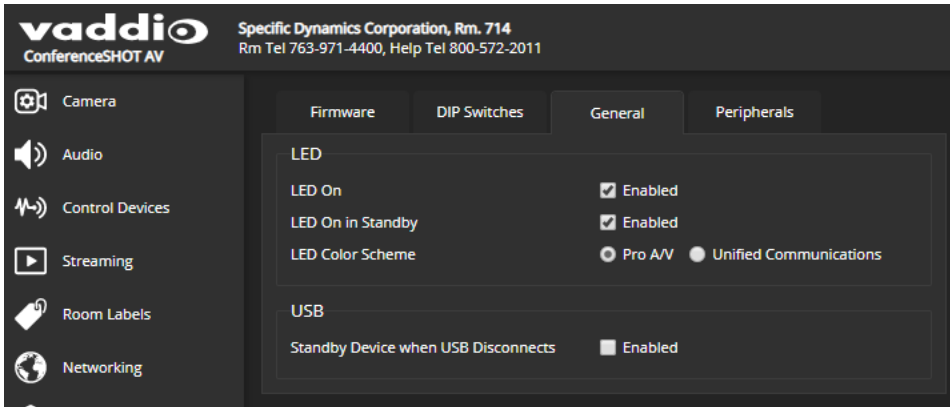
Super Wide mode – Provides a wider horizontal field of view and greater zoom. Some distortion may be present.

USB stream format (UVC Compliant or Client Custom) – Client Custom enables far-end camera control when used with the Zoom soft client. Use the default UVC Compliant setting with most other conferencing applications.

Indicator Light and Standby Behavior

SYSTEM PAGE, GENERAL TAB

Cameras using older firmware may include these settings on the DIP Switches tab.



LED On – Clear the check box to turn off the LED. In most cases, Vaddio recommends leaving the status light on, to let people in the room know whether the camera is currently sending video.

LED On in Standby – Clear the check box to turn off the LED when the camera is in standby mode.

LED color scheme – Pro A/V cameras and conferencing cameras use different color schemes for the indicator light. Select the color scheme that suits your needs.

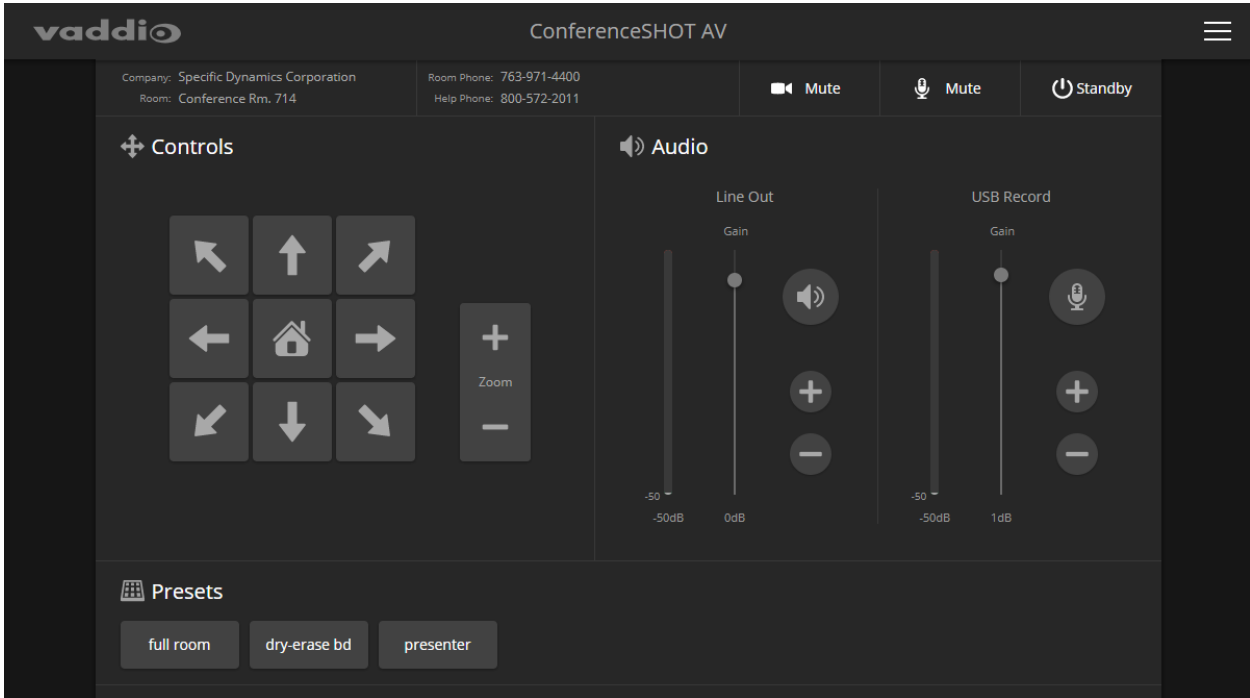
Standby Device when USB Disconnects – Check this box to set the camera in standby mode when no USB stream is present (camera is not in a conference).

Operating the Camera

CONTROLS PAGE (USER OR GUEST ACCESS)

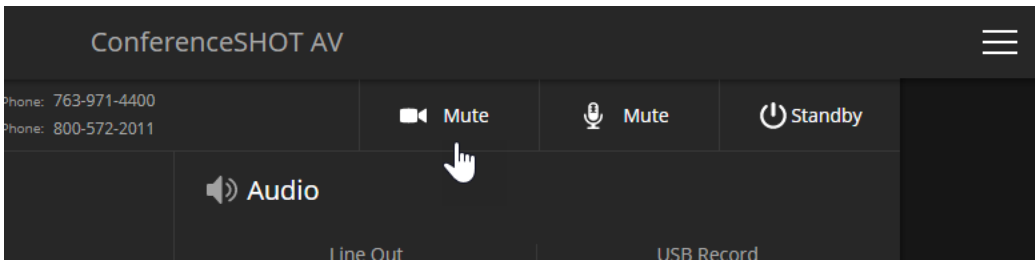
The Controls page provides most of the same controls as the IR Remote Commander, along with some that are not available from the remote:

- Pan, tilt, zoom, or return to home position
- Stop or resume transmitting live camera video (video mute)
- Mute or unmute the microphone(s)
- Change the speaker volume
- Put the camera in standby or bring it back to the ready state
- Move to camera presets, if any have been stored



Stopping or Resuming Video

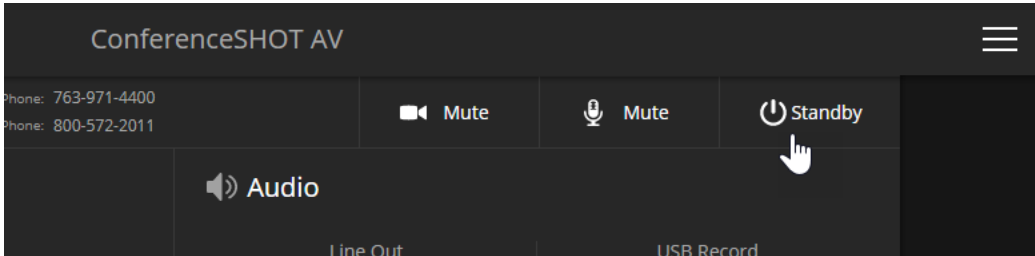
Use the video mute button to temporarily stop video from the camera without placing it in standby. Remember that the mute button does not mute the room's microphones. In video mute mode, the camera transmits blue or black video, with a message that the video is muted.



Managing the Camera Ready State

Use the Standby button to switch between low-power (standby) and ready states.

In standby mode, the screen presents the message “Device is in standby.” On entering standby mode, the camera pans 90° from center and 30° downward.

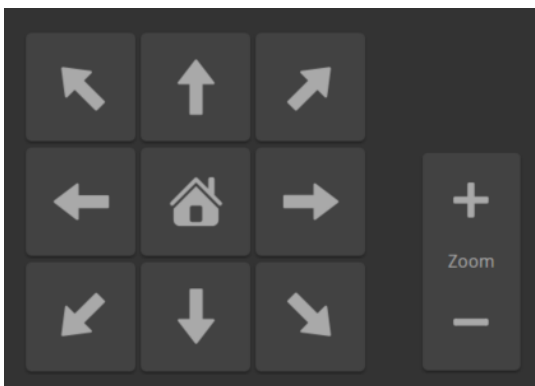


Moving the Camera

Use the arrow buttons for camera pan and tilt. The center button moves the camera to the home position.

Zooming In or Out

Use the Zoom + button to zoom in and the Zoom – button to zoom out.

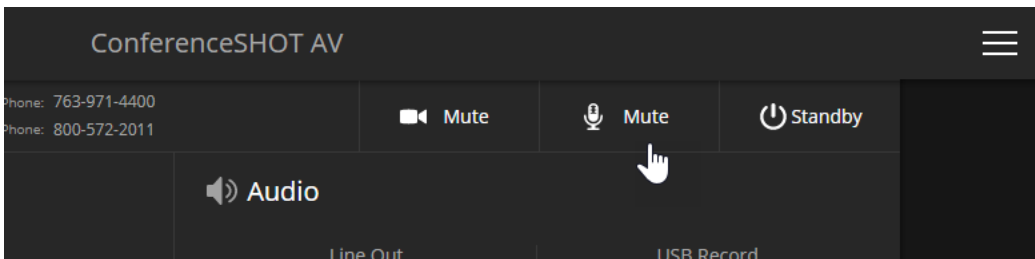


Moving the Camera to a Preset Position

Use the Preset buttons (if available) to move the camera to any of its programmed positions. Presets are only available if they have been set in the administrative interface.

Muting Your Microphones

Use the audio mute button at the top of the web interface.



Adjusting Speaker and Microphone Volume

Use the Line Out slider or the + and - buttons to set the speaker volume.

Use the USB Record slider or the + and - buttons to set the microphone volume.

Note

For best performance with most computers, we recommend setting the USB Record volume high. If it is set too low, the people at the far end of the conference may have trouble hearing you.

Telnet Serial Command API

The Vaddio Telnet command API allows an external device such as an AMX or Crestron presentation system to control the camera. It is also used for writing macros. Network connectivity and a Telnet client are required; Telnet port 23 is used.

In addition to the camera control commands, Telnet session management commands are available – help, history, and exit.

Note

When you connect via Telnet, you must log in using the admin account.

Things to know about Telnet:

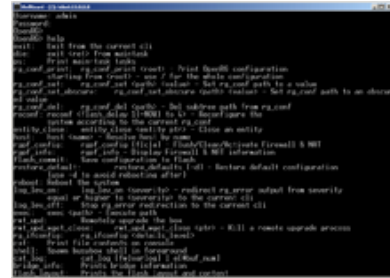
- The > character is the command prompt.
- Using a question mark as a command parameter will bring up a list of available subcommands or parameters. Example:

```
camera led ?
get      Get the current LED toggle
on       Turn the LED on
off      Turn the LED off
```

- CTRL-5 clears the current serial buffer on the device.

Typographical conventions:

- n{x | y | z} – Choose x, y, or z.
- n <variable> – Substitute the desired value here.
- n < x - y > – Valid range of values is from x through y.
- n [optional] – Parameter is not required.



camera home

Moves the camera to its home position.

Synopsis	camera home
Example	<pre>>camera home OK ></pre>

camera pan

Moves the camera horizontally.

Synopsis	camera pan { left [<speed>] right [<speed>] stop get set <position> [<speed>] }	
Options	left	Moves the camera left.
	right	Moves the camera right.
	speed <1 - 24>	Optional: Specifies the pan speed as an integer (1 to 24). Default speed is 12.
	stop	Stops the camera's horizontal movement.
	set <position>	<p>Sets the camera's absolute pan position in degrees, as a floating point value between approximately -155.00 and 155.00.</p> <p>This is the minimum range. Individual cameras may have slightly more travel before they reach their physical limits.</p> <p>The <code>camera pan set</code> command blocks execution of subsequent commands until the camera reaches the specified position.</p>
	get	Returns the camera's absolute pan position in degrees, as a floating point value between approximately -155.00 (left) and 155.00 (right).
Examples	<pre>>camera pan left OK ></pre> <p>Pans the camera left at the default speed.</p> <pre>>camera pan right 20 OK ></pre> <p>Pans the camera right using a speed of 20.</p> <pre>>camera pan stop OK ></pre> <p>Stops the camera's horizontal motion.</p> <pre>>camera pan set -15 OK ></pre> <p>Pans the camera to 15° left of its centerline at the default speed.</p>	

camera tilt

Moves the camera vertically.

Synopsis	<code>camera tilt{ up [<speed>] down [<speed>] stop get set <position> [<speed>] }</code>	
Options	<code>up</code>	Moves the camera up.
	<code>down</code>	Moves the camera down.
	<code>speed <1 - 20></code>	Optional: Specifies the tilt speed as an integer (1 to 20). Default speed is 10.
	<code>stop</code>	Stops the camera's vertical movement.
	<code>set <position></code>	Sets the camera's absolute tilt position in degrees, as a floating point value between approximately -30.00 and 90.00. This is the minimum range; individual cameras may have an additional degree or two of travel before they reach their physical limits. The <code>camera tilt set</code> command blocks execution of subsequent commands until the camera reaches the specified position.
	<code>get</code>	Returns the camera's absolute tilt position in degrees, as a floating point value between approximately -30.00 (down) and 90.00 (up). Note that the range is roughly 30.00 to -90.00 if Image Flip is selected.
Examples	<pre>>camera tilt up OK > Tilts the camera up at the default speed. >camera tilt down 20 OK > Tilts the camera down at a speed of 20. >camera tilt set -5 OK > Tilts the camera 5° down from level at the default speed.</pre>	

camera zoom

Moves the camera in toward the subject or out away from the subject.

Synopsis	camera zoom { in [<speed>] out [<speed>] stop get set <position> }	
Options	in	Zooms the camera in.
	out	Zooms the camera out.
	stop	Stops the camera's zoom movement.
	set <zoom>	Sets the camera's zoom level as a floating point value between 1.00 and 10.00 (12.00 in Super Wide Mode).
	get <zoom>	Returns the camera's zoom setting as a floating point value between 1.00 and 10.00 (12.00 in Super Wide Mode).
Examples	<pre>>camera zoom in OK > Zooms the camera in at the default speed. >camera zoom out 7 OK > Zooms the camera out using a speed of 7. >camera zoom stop OK > Stops the camera's zoom motion.</pre>	

camera focus

Changes the camera focus.

Synopsis	<code>camera focus { near [<speed>] far [<speed> stop mode {get auto manual} }</code>	
Options	<code>near</code>	Brings the focus nearer to the camera. Can only be used when camera is in manual mode.
	<code>far</code>	Moves the focus farther from the camera. Can only be used when camera is in manual mode.
	<code>speed <1 - 8></code>	Optional: integer (1 to 8) specifies the focus speed.
	<code>mode [get auto manual]</code>	Returns the current focus mode, or specifies automatic or manual focus.
	<code>stop</code>	Stops the camera's focus movement.
Examples	<p>camera focus near OK > Brings the focus near at the default speed.</p> <p>camera focus far 7 OK > Moves the focus farther from the camera at a speed of 7.</p> <p>camera focus mode get auto_focus: on OK > Returns the current focus mode.</p>	




camera preset

Moves the camera to the specified preset, or stores the current camera position and optionally CCU information.

Synopsis	<code>camera preset { recall store} [1 - 16] [save-ccu]</code>	
Options	<code>recall [1 - 16]</code>	Moves the camera to the specified preset.
	<code>store [1 - 16]</code>	Stores the current camera position as the specified preset.
	<code>save-ccu</code>	Optional: Saves the current CCU (color and lighting) settings as part of the preset. If not specified, the last color settings are used when recalled.
Examples	<pre>>camera preset recall 3 OK > Moves the camera to preset 3. >camera preset store 1 OK > Saves the camera's current position as preset 1.</pre>	

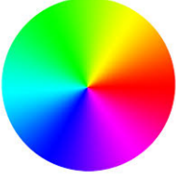
camera ccu get

Returns CCU (lighting and color) information.

Synopsis	camera ccu get <param>	
Options 	auto_white_balance	Returns the current state of the auto white balance setting (on or off).
	red_gain	Returns the red gain value as an integer (0 to 255).
	blue_gain	Returns the blue gain value as an integer (0 to 255).
	backlight_compensation	Returns the current state of the backlight compensation setting (on or off).
	iris	Returns the iris value as an integer (0 to 11).
	auto_iris	Returns the current auto-iris state (on or off).
	gain	Returns the gain value as an integer (0 to 11).
	detail	Returns the detail value as an integer (0 to 15).
	chroma	Returns the chroma value as an integer (0 to 14).
	gamma	Returns gamma as an integer (-64 to 64)
	wide_dynamic_range	Returns the current setting for Wide Dynamic Range (on or off).
	all	Returns all current CCU settings.
Examples	<pre> >camera ccu get iris iris 6 OK > Returns the current iris value. >camera ccu get red_gain red_gain 201 OK > Returns the current red gain value. >camera ccu get all auto_iris on auto_white_balance on backlight_compensation off blue_gain 193 chroma 2 detail 8 gain 3 iris 11 red_gain 201 wide_dynamic_range off OK > Returns all current CCU settings. </pre>	

camera ccu set

Sets the specified CCU (lighting) information.

Synopsis	camera ccu set <param> <value>	
<p>Options</p> 	auto_white_balance {on off}	Sets the current state of the auto white balance setting (on or off). Auto white balance overrides red gain and blue gain manual settings.
	red_gain <0 - 255>	Sets the red gain value as an integer (0 to 255). Can only be used when auto white balance is off.
	blue_gain <0 - 255>	Sets the blue gain value as an integer (0 to 255). Can only be used when auto white balance is off.
	backlight_compensation {on off}	Sets the current state of the backlight compensation setting (on or off). Can only be used when wide dynamic range mode is off.
	iris <0 - 11>	Sets the iris value as an integer (0 to 11). Can only be used when auto-iris is off.
	auto_iris {on off}	Sets the auto-iris state (on or off). Auto-iris disables manual iris and gain when it is on.
	gain <0 - 11>	Sets gain value as an integer (0 to 11). Can only be used when auto-iris is off.
	detail <0 - 15>	Sets the detail value as an integer (0 to 15).
	chroma <0 - 14>	Sets the chroma value as an integer (0 to 14).
	gamma <-64 - 64>	Sets the gamma value as an integer (-64 to 64)
	wide_dynamic_range {on off}	Sets Wide Dynamic Range mode on or off. Can only be used when backlight compensation is off.
Examples	<pre>>camera ccu set auto_iris off OK > Turns off auto-iris mode, returning the camera to manual iris control. >camera ccu set red_gain 10 OK > Sets the red gain value to 10.</pre>	

camera led

Set or change the behavior of the indicator light.

Synopsis	camera led { get off on }	
Options	get	Returns the indicator light's current state (on or off).
	off	Disables the indicator light.
	on	Enables the indicator light.
Examples	<pre>>camera led off OK ></pre> <p>Disables the indicator light. When the LED is off, you cannot tell by looking at the camera whether it is sending video.</p> <pre>>camera led get led: on OK ></pre> <p>Returns the current state of the indicator light.</p>	

camera recalibrate

Recalibrates the pan and tilt motors. This is typically done in response to a motor fault indication or error message.

Synopsis	camera recalibrate
Example	<pre>>camera recalibrate OK ></pre>

camera standby

Set or change camera standby status.

Synopsis	camera standby { get off on toggle }	
Options	get	Returns the camera's current standby state.
	off	Brings the camera out of standby (sleep) mode.
	on	Stops video and puts the camera in standby mode.
	toggle	Changes the camera's standby state - if it was not in standby mode, it enters standby; if it was in standby mode, it "wakes up."
Examples	<pre>>camera standby off OK > Brings the camera out of standby mode. >camera standby get standby: on OK > Returns the current standby state.</pre>	

camera icr

Gets or sets the state of the camera's IR cut filter.

Synopsis	camera icr { get on off }	
Options	get	Returns the IR cut filter mode.
	on	Sets the IR cut filter on.
	off	Sets the IR cut filter off.
Examples	<pre>camera icr get IR(Cut) filter off(In) > Returns the current IR cut filter state (off, in this case). camera icr on OK > Sets the IR cut filter on.</pre>	

video mute

Gets or sets the camera's video mute status. When video is muted, the camera sends blue or black video with an on-screen message stating that video mute is on. This can be desirable when preparing the room, or when privacy is needed.

Note

In systems with audio, this command does not affect the audio.

Synopsis	video mute { get off on toggle }	
Options	get	Returns the current video mute status.
	off	Unmutes the video. (Normal video resumes.)
	on	Mutes the video. (Blue or black screen with message)
	toggle	Changes the camera's video mute status.
Examples	<pre>>video mute get mute: off OK ></pre> <p>Returns video mute status.</p> <pre>>video mute on OK ></pre> <p>Transmits blue or black video.</p>	

audio volume

Gets or sets the volume of the specified audio channel.

Synopsis	audio < channel > volume { get up down set }	
Channels	master	Applies the command to all audio channels.
	line_in_1 line_in_2	Line/Mic In ports (typically microphone inputs).
	usb3_playback_left usb3_playback_right	Audio portion of the incoming (far-end) USB stream, left and right channels.
	hdbt_in_left hdbt_in_right	Audio portion of the incoming (far-end) HDMI signal, left and right channels.
	line_out_1 line_out_2	Line Out ports (typically speaker outputs).
	usb3_record_left usb3_record_right	Outbound (near-end) audio portion of the USB stream, left and right channels.
	hdmi_out_left hdmi_out_right	Audio portion of the HDMI output (far-end audio to the display's speakers), left and right channels.
	sdi_out_left sdi_out_right	Audio portion of the SDI output (far-end audio to the display's speakers), left and right channels.
	hdbt_out_left hdbt_out_right	Outbound (far-end) audio portion of the IP stream, left and right channels.
Options	get	Returns the current volume of the specified channel.
	up	Increases the volume of the specified channel.
	down	Reduces the volume of the specified channel.
	set	Sets the volume of the specified channel.
Examples	<pre>audio line_in_1 volume set -5 OK > Sets -5 dB as the volume for the device connected to the Line In 1 port. audio line_out_1 volume get volume -10.0 dB OK ></pre> <p>Returns the current volume for the speaker connected to the line out port.</p>	

audio mute

Gets or sets the mute status of the specified audio channel.

Synopsis	audio < channel > mute { get on off toggle }	
Channels	master	Applies the command to all audio channels.
	line_in_1 line_in_2	Line/Mic In ports (typically microphone inputs).
	usb3_playback_left usb3_playback_right	Audio portion of the incoming (far-end) USB stream, left and right channels.
	hdbt_in_left hdbt_in_right	Audio portion of the incoming (far-end) HDMI signal, left and right channels.
	line_out_1 line_out_2	Line Out ports (typically speaker outputs).
	usb3_record_left usb3_record_right	Outbound (near-end) audio portion of the USB stream, left and right channels.
	hdmi_out_left hdmi_out_right	Audio portion of the HDMI output (far-end audio to the display's speakers), left and right channels.
	sdi_out_left sdi_out_right	Audio portion of the SDI output (far-end audio to the display's speakers), left and right channels.
	hdbt_out_left hdbt_out_right	Outbound (far-end) audio portion of the IP stream, left and right channels.
Options	get	Returns the current mute status of the specified channel.
	on	Mutes the audio for the specified channel.
	off	Unmutes the audio for the specified channel.
	toggle	Changes the mute state for the specified channel – unmutes if it was muted, mutes if it was not.
Examples	<pre>> audio line_out_1 mute get mute: off OK ></pre> <p>Returns the current mute state of the device connected to audio line out 1. Mute is off, so the audio is on.</p> <pre>>audio master mute on OK ></pre> <p>Mutes all audio.</p>	

trigger

Turn an existing trigger on or off. This command has no effect if the specified trigger has not been defined.

Note

If the web interface's macro/trigger test mode is in use, this command may return parse errors.

Synopsis	trigger <1..10> { off on }	
Parameters	<1..10>	The trigger index (identifier) – triggers 1 through 10 are available.
	{off on}	Set the state of the trigger.
Example	<pre>> trigger 3 on OK Turns trigger 3 on.</pre>	

streaming ip enable

Set or change the state of IP streaming.

Synopsis	streaming ip enable { get on off toggle }	
Parameters	get	Returns the current state of IP streaming
	on	Enables IP streaming.
	off	Disables IP streaming.
	toggle	Changes the state of IP streaming (on if it was off, or off if it was on). streaming ip enable toggle has the same effect as selecting the Enable IP Streaming checkbox in the web interface.
Example	<pre>>streaming ip enable on > OK Enables IP streaming. >streaming ip enable get enabled: true > OK Returns the current state of IP streaming.</pre>	

streaming settings get

Returns current IP and USB streaming settings.

Synopsis	<code>streaming settings get</code>	
Parameters	IP Custom_Frame_Rate	Frame rate (Custom mode).
	IP Custom_Resolution	Resolution (Custom mode).
	IP Enabled	True if IP streaming is enabled, False if it is not.
	IP MTU	The current MTU setting (1400 is default)
	IP Port	Port number used for IP streaming. RTSP default is 554; RTMP default is 1935.
	IP Preset_Quality	Video quality (Easy mode).
	IP Preset_Resolution	Resolution (Easy mode).
	IP Protocol	IP streaming protocol in use (RTSP or RTMP).
	IP URL	URL where the RTSP stream is available.
	IP Video_Mode	Video quality mode (preset or custom).
	USB Active	True if a USB stream is present; false if not.
	USB Device	The USB Device Name currently assigned.
	USB Frame_Rate	Frame rate for the USB stream (negotiated with conferencing client). 0 when no USB stream is present.
	USB Resolution	Resolution of the USB stream (negotiated with conferencing client). 0x0 when no USB stream is present.
	USB Version	2 or 3, as negotiated with the conferencing client. 0 if no USB stream is present.
UVC Extensions_Enabled	Allow or disable far-end control of the camera.	
Example	<pre> >streaming settings get IP Custom_Frame_Rate 30 IP Custom_Resolution 1080p IP Enabled true IP Port 554 IP Preset_Quality Standard (Better) IP Preset_Resolution 1080p IP Protocol RTSP IP URL vaddio-conferenceshot-av-stream IP Video_Mode preset USB Active false USB Device ConferenceSHOT AV USB Frame_Rate 0 USB Resolution 0x0 USB Version 3 UVC Extensions_Enabled false OK > </pre>	

network settings get

Returns the camera's current network settings and MAC address.

Synopsis	network settings get
Example	<pre>network settings get Name eth0:WAN MAC Address 00:1E:C0:F6:CA:7B IP Address 192.168.1.67 Netmask 255.255.255.0 VLAN Disabled Gateway 192.168.1.254 OK ></pre>

network ping

Sends an ICMP ECHO_REQUEST to the specified hostname or IP address.

Synopsis	network ping [count <count>] [size <size>] <string>	
Options	<count>	The number of ECHO_REQUEST packets to send. Default is five packets.
	<size>	The size of each ECHO_REQUEST packet. Default is 56 bytes.
	<string>	The hostname or IP address where the ECHO_REQUEST packets will be sent.
Examples	<pre>>network ping 192.168.1.66 PING 192.168.1.66 (192.168.1.66): 56 data bytes 64 bytes from 192.168.1.66: seq=0 ttl=64 time=0.476 ms 64 bytes from 192.168.1.66: seq=1 ttl=64 time=0.416 ms 64 bytes from 192.168.1.66: seq=2 ttl=64 time=0.410 ms 64 bytes from 192.168.1.66: seq=3 ttl=64 time=0.410 ms 64 bytes from 192.168.1.66: seq=4 ttl=64 time=3.112 ms --- 192.168.1.66 ping statistics --- 5 packets transmitted, 5 packets received, 0% packet loss round-trip min/avg/max = 0.410/0.964/3.112 ms ></pre> <p>Sends five ECHO_REQUEST packets of 56 bytes each to the host at 192.168.1.66.</p>	
	<pre>>network ping count 10 size 100 192.168.1.1</pre> <p>Sends 10 ECHO_REQUEST packets of 100 bytes each to the host at 192.168.1.1. The command returns data in the same form as above.</p>	


system reboot

Reboots the system either immediately or after the specified delay. Note that a reboot is required when resetting the system to factory defaults (system factory-reset).

Synopsis	system reboot [<seconds>]	
Options	<seconds>	The number of seconds to delay the reboot.
Examples	<pre>>system reboot OK > The system is going down for reboot NOW!conferenceshot-av-D8-80-39-62-A7-C5 Reboots the system immediately. >system reboot 30 Reboots the system in 30 seconds. The response is in the same form; the system message appears at the end of the delay.</pre>	

system factory-reset

Gets or sets the factory reset status. When the factory reset status is on, the system resets to factory defaults on reboot.

Synopsis	system factory-reset { get on off}	
Options	get	Returns the camera's current factory reset status.
	on	Enables factory reset on reboot and returns the camera's current factory reset status.
	off	Disables factory reset on reboot and returns the camera's current factory reset status.
Examples	 <pre>>system factory-reset get factory-reset (software): off factory-reset (hardware): off OK > Returns the factory reset status. This evaluates the most recent system factory-reset on or off command, if one has been received. >system factory-reset on factory-reset (software): on factory-reset (hardware): off OK > Enables factory reset upon reboot. Note This command does not initiate a factory reset. The factory reset takes place on the next reboot.</pre>	

version

Returns the current firmware version.

Synopsis	<code>version</code>
Example	<pre>>version Audio 1.03 Commit 598672663c7763ca45a02a6c8755f641068af509 PScC Version 1.4 Sensor Version 04.00 System Version ConferenceSHOT AV 1.0.0 OK ></pre>

history

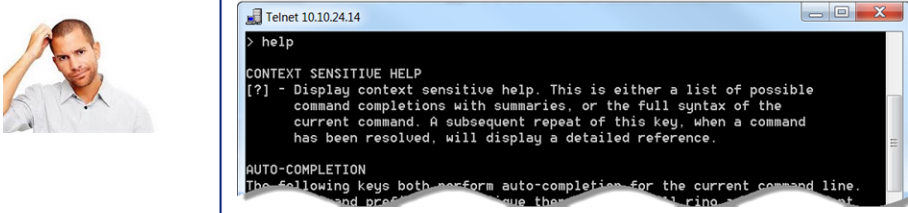
Returns the most recently issued commands from the current Telnet session. Since many of the programs read user input a line at a time, the command history is used to keep track of these lines and recall historic information.

Synopsis	<code>history <limit></code>	
Options	<code><limit></code>	Integer value specifying the maximum number of commands to return.
Examples	<p>history Displays the current command buffer.</p> <p>history 5 Sets the history command buffer to remember the last 5 unique entries.</p>	
Additional information	<p>You can navigate the command history using the up and down arrow keys. This command supports the expansion functionality from which previous commands can be recalled from within a single session. History expansion is performed immediately after a complete line is read.</p> <p>Examples of history expansion:</p> <ul style="list-style-type: none"> * !! Substitute the last command line. * !4 Substitute the 4th command line (absolute as per 'history' command) * !-3 Substitute the command line entered 3 lines before (relative) 	



help

Displays an overview of the CLI syntax.

Synopsis	<code>help</code>
Example	

exit

Ends the command session and closes the socket.

Synopsis	<code>exit</code>
Example	<code>exit</code>

Specifications

Camera and Image

Image device	1/2.8-type Exmor CMOS sensor	Pixels	2.14 million (effective)
IP (H.264) RTSP and RTMP Video Resolutions	1080p down to 180p 1080p at 30/25/15; others 60/30/25/15	USB 3.0 (UVC) Video Resolutions	1080p down to 180p at 60/30/15
Pan angle and speed	± 155°, up to 90°/sec	Tilt angle and speed	+90° -30°, up to 90°/sec
Lens and horizontal FOV	10x optical zoom, 67.0° wide to 7.6° tele, f=3.8mm to 38mm, F1.8 to F3.4 Super-wide: 12x optical zoom, 74° wide to 7.6° tele, f=3.8mm to 41.8mm, F1.8 to F3.4		
Min. working distance	10mm (wide), 1.0m (tele)	Min. illumination	100+ lux recommended
Aperture/detail	16 steps	Gain	Auto or manual
Backlight compensation	On or off	White balance	Auto, manual, One-Push
Focusing system	Auto or manual	Noise reduction	On or off
Sync system	Internal	S/N ratio	Over 50 dB
Remote management	Web interface, Telnet	Power	PoE+ (25 watts)

Audio

EasyMic Inputs (2 channels available)	RJ-45 12V, bidirectional, balanced	Line Out	4-pin Phoenix type terminal block Impedance: 50 ohms Frequency response 20Hz - 20KHz THD + noise < 0.02% Maximum output level +12 dBu differential audio Power to speaker: 12V, 0.84A max (10 watt speaker)
IP Streaming	1 Channel (PCM), 16-bit resolution, 48 KHz sample rate		
USB streaming (record, playback)	2 Channel (UAC), 16-bit resolution, 48 KHz sample rate		

Physical and Environmental

Height	Camera: 7.0 in. (17.78 cm) Speaker: 3.63 in. (9.22 cm)	Operating temperature	0°C to +40°C (32°F to 104°F)
Width	Camera: 7.06 in. (17.93 cm) Speaker: 7.06 in. (17.93 cm)	Operating humidity (relative)	20% to 80% non-condensing
Depth	Camera: 6.5 in. (16.51 cm) Speaker: 6.8 in. (17.27 cm)	Storage temperature	-5°C to +60° C (23°F to 140°F)
Weight	Camera: 3.6 lbs.(1.63 kg) Speaker: 1.6 lbs. (0.72 kg)	Storage humidity (relative)	20% to 80% non-condensing

Specifications are subject to change without notice.

Troubleshooting and Care

When the camera doesn't behave as you expect, check the indicator light on the front before you do anything else.

Use this table to determine whether it's time to call Vaddio Technical Support.

Power and Control

What is it doing?	Possible causes	Check and correct
Nothing. The light on the front is off and no video is available.	At least one of the cables is bad.	Check using known good cables.
	The wall outlet is not active. (Check by finding out if it powers something else, such as a laptop or phone charger.)	Use a different outlet.
	The camera or its power supply is bad.	Contact your reseller or Vaddio Technical Support.
The light on the front of the camera is off but the web interface and video are available.	The status light is turned off.	You can turn it on again using the LED On setting on the General tab of the System page, or using the Telnet command <code>camera led on</code> .
The camera is not responding to the remote and the light is yellow.	A firmware update is in progress.	Wait a few minutes, and try again when the light turns blue.
The camera does not respond to the remote, but the web interface is available.	The remote is not using the same IR channel as the camera.	Push the Camera Select 1 button on the remote.
	The batteries in the remote are dead.	Put new batteries in the remote.
	The batteries were installed incorrectly in the remote.	Install the batteries as shown in the diagram inside the remote.
The camera responds to the remote but the web interface is not available.	The camera is not using the IP address you browsed to.	Press the Data Screen button on the remote to see camera information.

Video and Streaming

What is it doing?	Possible causes	Check and correct
No H.264 video stream.	IP streaming is not enabled.	Enable IP streaming: Streaming page in the web interface.
No USB video stream.	USB streaming is not enabled.	Enable USB streaming: Streaming page in the web interface.
Black and white video.	The IR cut filter is on. Send the Telnet command <code>camera icr get</code> to verify.	Send the Telnet command <code>camera icr off</code> to turn off the IR cut filter and return to normal video.
Artifacts such as green "sparkles" in the video from the HDMI output.	Poor HDMI or DVI connection.	Be sure the HDMI/DVI cable is fully seated.
	Bad HDMI/DVI cable.	Replace the cable.

Audio

What is it doing?	Possible causes	Check and correct
No audio from the speaker (far-end audio)	Far-end microphone is muted (the conferencing window may show a mute icon for that site's microphone)	Ask the participants at that site to unmute their microphone.
	Speaker is not connected.	Check all connections carefully.
	HDMI audio embedder is connected incorrectly.	
	Speaker volume is turned all the way down.	You checked that first, right?
Far end reports that they can't hear you. (No near-end audio)	Microphone is not connected.	Check all connections carefully.
	Your microphone is muted.	Unmute your microphone.
Echo cancellation is not working.	Conference audio from the far end is going to the computer speaker or external speakers connected to the computer	Ensure that at least one Vaddio microphone is connected to the camera, and either use the ConferenceSHOT AV speaker or use the HDMI Audio Embedder to send far-end conference audio to the display's speakers. These solutions both provide echo cancellation.
	The soft conferencing client is not using the speaker and microphone(s) connected to the camera.	In the soft conferencing client, select the speakers and microphone connected to the camera as the conference audio devices.

Other Issues

What is it doing?	Possible causes	Check and correct
Status light continues to blink blue.	The USB cable is not connected.	Connect the USB cable.
Status light blinks yellow	Pan or tilt motor is out of calibration	Reset the pan and tilt motors. See Correct a Motor Calibration Error (next section).

Status Indicator Light

The light in the camera's base indicates its current state.

- Blue – Camera is active
- Purple – Standby mode or booting
- Yellow – Firmware update is in progress
- Blinking blue – USB cable is disconnected (UC color scheme)
- Blinking red – Video mute is on (UC color scheme)
- Blinking yellow – Motor out of calibration

Caution

Do not remove power or reset the camera while the indicator is yellow, showing a firmware update in progress. Interrupting a firmware update can make the camera unusable.

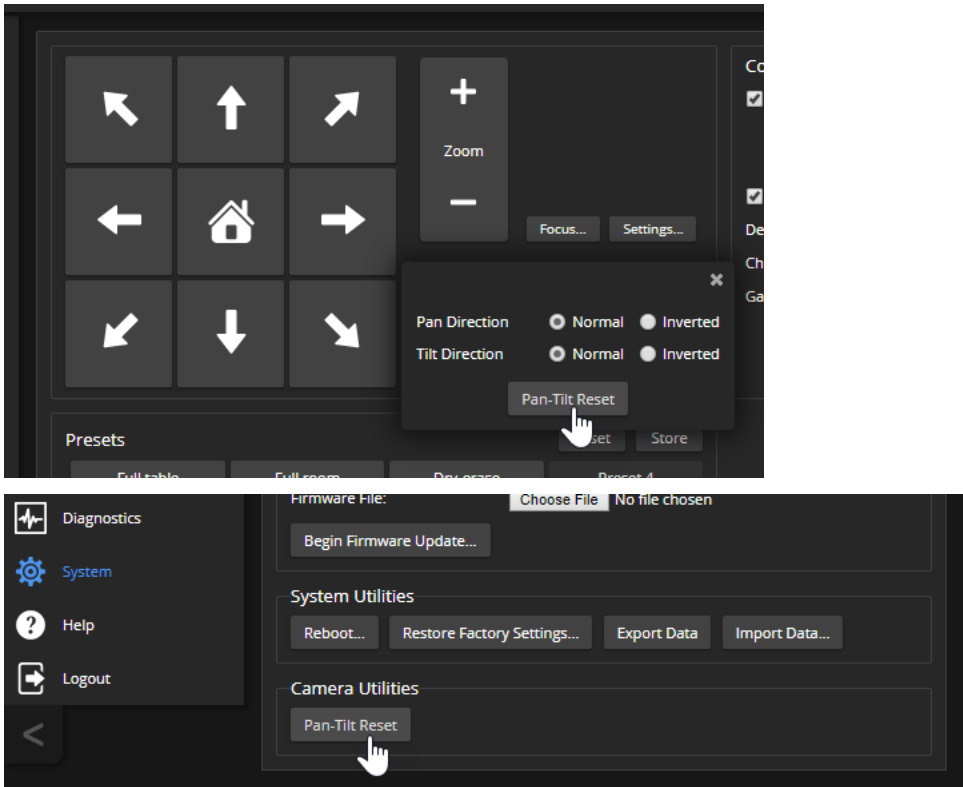
Note

By default, the camera's status indicator light is active during normal operation; however, it can be configured to remain off when the camera is powered up. The camera may be sending video even if the light is off.

Correct a Motor Calibration Error

If the web interface presents an error message about the motors, or if the camera's status light is blinking yellow, you will need to reset the pan and tilt motors.

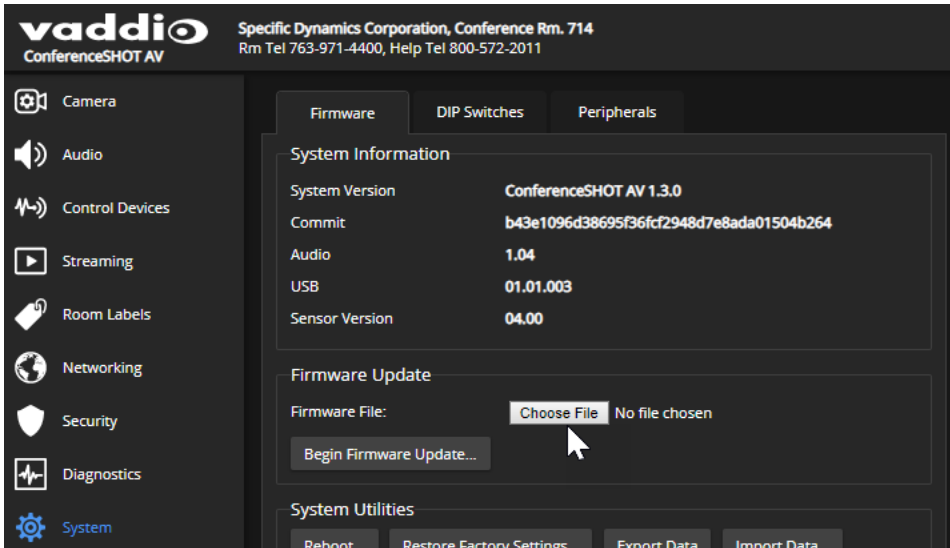
1. On the Camera Controls page, select Settings to open the pan and tilt settings box;
OR
On the System page, go to the Firmware tab if you are on a different tab.
2. Select Pan-Tilt Reset. The motors recalibrate. This takes a few seconds.



Restoring Default Camera Settings

This returns the camera to its original state. If you export the camera's configuration before restoring factory defaults, you will be able to restore the room label, time zone information, and home information by importing the configuration afterward.

From the web interface: Log on using the admin account, go to the System page's Firmware tab, and select Restore Factory Settings.



Operation, Storage, and Care

For smears or smudges on the product, wipe with a clean, soft cloth. Use a lens cleaner on the lens. Do not use any abrasive chemicals.

Keep this device away from food and liquids.

Do not operate or store the device under any of the following conditions:

- Temperatures above 40° C (104° F) or below 0° C (32° F)
- High humidity, condensing or wet environments
- Inclement weather
- Severe vibration
- In a wind tunnel
- Dry environments with an excess of static discharge

Do not attempt to take this product apart. There are no user-serviceable components inside.

Glossary

AEC

Acoustic echo cancellation. Audio processing that subtracts the far-end (speaker) audio from the sound that your microphone picks up.

auto white balance

A setting that allows the camera to manage color adjustments automatically.

backlight compensation

A setting that reduces contrast to adjust for bright light behind the main subject of the shot.

bandwidth

Data transfer rate (bits per second) for the stream. In some cases, using a high bandwidth can slow down other network traffic. On networks with very low bandwidth, video issues may result. Streaming at a lower resolution or frame rate can reduce bandwidth usage.

chroma

A setting that adjusts color intensity.

detail

A setting that adjusts image sharpness. If detail is set too low, the image may appear unrealistically smooth – like an episode of Moonlighting.

DHCP

Dynamic Host Configuration Protocol. A network management protocol that assigns an IP address to a device automatically when it is connected to the network.

DIY

Do It Yourself. As in, "You can copy information from this document to create a DIY room guide customized for your conference room." Yes! You can do that! In fact, the "Info for DIY Room Guides" document is specifically designed for you to adapt and customize.

EasyMic

Vaddio's proprietary connectivity standard for conferencing microphones.

echo cancellation

Audio processing that subtracts the far-end (speaker) audio from the sound that your microphone picks up.

far end

(conferencing) A location in the conference other than the one where you are. Far-end video is what you typically see in a conference – the people at the other end of the call.

Field of View (FOV)

How wide the video image is. Vaddio measures horizontal field of view. Some manufacturers use diagonal field of view, which yields a bigger number for the same actual image area. Tilt your head to one side and diagonal FOV will make sense.

flombodulator

A technically complex item the name of which you can't recall at the moment.

frame rate

The number of output video frames per second. Different outputs (such as the IP stream and the USB stream) may use different frame rates. For streaming, higher frame rates use more bandwidth.

full-duplex

Simultaneous two-way (or multi-way) audio; conference participants at the near end can talk and still hear the participants at the far end(s), as in a face-to-face meeting.

gamma

A setting that adjusts the range (gray density) between bright areas and shadows.

gateway

Network information automatically assigned in a DHCP network. If installing equipment on a non-DHCP network, get this information from the network administrator.

HDMI

A video output format; may also carry audio information.

HID audio controls

(Human Interface Device) Controls to enable conference participants to use the conferencing client to control the audio.

home (camera)

The settings to which the camera returns after a reboot or on exiting standby mode. Depending on the camera's capabilities, home may include zoom, color and lighting settings, and (for PTZ cameras) pan/tilt position.

home button (microphone)

A One Touch trigger control on a tabletop microphone. The button can be associated with one macro in momentary mode, or two macros in latching mode.

HTTP

HyperText Transfer Protocol. The magic that makes websites work.

HTTPS

HyperText Transfer Protocol Secure. The magic that uses encryption to make websites work securely. See SSL certificate for more information.

IP address

Where a given device is on the IP network, logically. The IP address enables the network to route data to the right device – and that's the reason IP address conflicts are bad.

IP address conflict

Two or more devices attempting to use the same IP address on a network. Results are unpredictable but never good.

LED

Light-Emitting Diode. An indicator light.

macro

A defined sequence of commands that a device performs in response to a trigger event.

MTU

Maximum Transmission Unit. The largest number of bytes allowed in a packet. If you don't know what that means, don't change MTU size.

near end

(conferencing) Your location in a conference. When you mute the video, your camera stops sending near-end video.

NTP

Network Time Protocol. Ensures that NTP-enabled devices on the network all show the same system time, so timestamps are accurate.

PoE, PoE+, PoE++

Power over Ethernet; a means of powering a device using its network connection. Requires a mid-span power injector. PoE+ and PoE++ deliver more power than PoE.

preset

A stored camera position. Contains pan, tilt, and zoom position; may also include color settings.

RCLB

Really Cool Logo Badge. A visual cue that the device is a genuine Vaddio product. Accept no substitutes!

resolution

1. The image size. For Vaddio cameras, resolution is expressed in terms of digital TV standards, with 1080p being the default in most cases. Resolution and frame rate are set together on Vaddio cameras.
2. The thing that usually flies out the window by January 10th.

RTMP

Real-Time Messaging Protocol. Used for livestreaming video (and audio, if available) to a service such as YouTube Live.

RTSP

Real-Time Streaming Protocol. Used for streaming video and audio over your network.

soft conferencing client

A conferencing application (such as Zoom, Google Hangouts, or Skype for Business) that uses a computer rather than requiring a conferencing codec.

SSL certificate

A file used with HTTPS proving that a web page really originates from its purported source. If you enable or require HTTPS on a camera or other device without installing an SSL certificate, your browser will pop up security warnings when you try to browse to the device's web interface.

streaming protocol

A set of rules that define how video and audio data are sent over the network. See RTMP and RTSP.

subnet mask

Network information automatically assigned in a DHCP network. If installing equipment on a non-DHCP network, get this information from the network administrator.

trigger

An event, such as pressing the Home button on a connected TableMIC, that can be associated with a macro (defined command sequence). Devices that originate trigger events are sometimes called triggers or trigger devices.

UAC drivers

(Universal Audio Class) Standard USB audio drivers used by Vaddio conferencing products with audio capabilities.

UCC, UC conferencing

Unified Communications Conferencing; refers to soft-client conferencing (such as Zoom or Skype for Business) using a computer with USB-connected peripherals.

USB 2

An older, lower-speed USB protocol; good for audio but offers lower maximum resolutions for video conferencing. USB 2 products can be connected to USB 2 or USB 3 ports on your computer.

USB 3

A high-speed USB protocol, capable of handling high-quality video and audio as in conferencing applications. USB 3 products should be connected to USB 3 ports; performance may be degraded otherwise.

USB playback

Audio from other sites (far-end audio) in a conference call.

USB record

Audio from your site (near-end audio) in a conference call.

UVC drivers

(Universal Video Class) Standard USB video drivers used by Vaddio cameras. They're the reason your computer doesn't have to stop and download a driver when you connect your new Vaddio USB camera to it.

UVC extensions

Controls in UVC drivers to allow participants at the far end of a conference to control your camera, if it processes UVC commands. The administrator may choose to disable these.

Compliance and Conformity Statements

Compliance testing was performed to the following regulations:

FCC Part 15 (15.107, 15.109), Subpart B	Class A
ICES-003, Issue 54: 2012	Class A
EMC Directive 2014/30/EU	Class A
EN 55032: 2015	Class A
EN 55024: November 2010	Class A
IEC 60950-1:2005 (2nd Edition); Am 1: 2009 + Am 2: 2013	Safety
EN 60950-1: 2006 + A11: 2009 + A1: 2010 + A12: 2011 + A2: 2013	Safety

FCC Part 15 Compliance

This equipment has been tested and found to comply with the limits for a Class A digital device, pursuant to Part 15, Subpart B, of the FCC Rules. These limits are designed to provide reasonable protection against harmful interference when the equipment is operated in a commercial environment. This equipment generates, uses, and can radiate radio frequency energy and, if not installed and used in accordance with the instruction manual, may cause harmful interference to radio communications. Operation of this equipment in a residential area is likely to cause harmful interference in which case the user will be required to correct the interference at his/her own expense.

Operation is subject to the following two conditions: (1) This device may not cause interference, and (2) This device must accept any interference including interference that may cause undesired operation of the device.



Changes or modifications not expressly approved by Vaddio can affect emission compliance and could void the user's authority to operate this equipment.

ICES-003 Compliance

This digital apparatus does not exceed the Class A limits for radio noise emissions from digital apparatus set out in the Radio Interference Regulations of the Canadian Department of Communications.

Le présent appareil numérique n'émet pas de bruits radioélectriques dépassant les limites applicables aux appareils numériques de la classe A prescrites dans le Règlement sur le brouillage radioélectrique édicté par le ministère des Communications du Canada.



European Compliance

This product has been evaluated for Electromagnetic Compatibility under the EMC Directive for Emissions and Immunity and meets the requirements for a Class A digital device. In a domestic environment this product may cause radio interference in which case the user may be required to take adequate measures.

Standard(s) To Which Conformity Is Declared:



EMC Directive 2014/30/EU

EN 55032: 2015 – Conducted and Radiated Emissions

EN 55024: November 2010 – Immunity

IEC 60950-1: 2005 (2nd Edition); Am 1: 2009 + Am 2: 2013 – Safety

EN 60950-1: 2006 + A11: 2009 + A1: 2010 + A12: 2011 + A2: 2013 – Safety

IEC 62368-1: 2014 (2nd Edition) – Safety

Warranty and Return Policy

Hardware warranty: Two (2) year limited warranty on all parts and labor for Vaddio manufactured products. Vaddio warrants its manufactured products against defects in materials and workmanship for a period of two years from the day of purchase, to the original purchaser, if Vaddio receives notice of such defects during the warranty. Vaddio, at its option, will repair or replace products that prove to be defective. Vaddio manufactures its hardware products from parts and components that are new or equivalent to new in accordance with industry standard practices.

Exclusions: The above warranty shall not apply to defects resulting from improper or inadequate maintenance by the customer, customers applied software or interfacing, unauthorized modifications or misuse, mishandling, operation outside the normal environmental specifications for the product, use of the incorrect power supply, modified power supply or improper site operation and maintenance. OEM and special order products manufactured by other companies are excluded and are covered by the manufacturer's warranty.

Vaddio Customer Service: Vaddio will test, repair, or replace the product or products without charge if the unit is under warranty. If the product is out of warranty, Vaddio will test then repair the product or products. The cost of parts and labor charge will be estimated by a technician and confirmed by the customer prior to repair. All components must be returned for testing as a complete unit. Vaddio will not accept responsibility for shipment after it has left the premises.

Vaddio Technical Support: Vaddio technicians will determine and discuss with the customer the criteria for repair costs and/or replacement. Vaddio Technical Support can be contacted by email at support@vaddio.com or by phone at one of the phone numbers listed on support.vaddio.com.

Return Material Authorization (RMA) number: Before returning a product for repair or replacement request an RMA from Vaddio's technical support. Provide the technician with a return phone number, e-mail address, shipping address, product serial numbers and original purchase order number. Describe the reason for repairs or returns as well as the date of purchase. See the General RMA Terms and Procedures section for more information. RMAs are valid for 30 days and will be issued to Vaddio dealers only. End users must return products through Vaddio dealers. Include the assigned RMA number in all correspondence with Vaddio. Write the assigned RMA number clearly on the shipping label of the box when returning the product. All products returned for credit are subject to a restocking charge without exception. Special order products are not returnable.

Voided warranty: The warranty does not apply if the original serial number has been removed or if the product has been disassembled or damaged through misuse, accident, modifications, use of incorrect power supply, use of a modified power supply or unauthorized repair.

Shipping and handling: Vaddio will not pay for inbound shipping transportation or insurance charges or accept any responsibility for laws and ordinances from inbound transit. Vaddio will pay for outbound shipping, transportation, and insurance charges for all items under warranty but will not assume responsibility for loss and/or damage by the outbound freight carrier. If the return shipment appears damaged, retain the original boxes and packing material for inspection by the carrier. Contact your carrier immediately.

Products not under warranty: Payment arrangements are required before outbound shipment for all out of warranty products.

General RMA Terms and Procedures: RMA's are valid for 30 days and will be issued to Vaddio dealers only.

- End users must return products through Vaddio dealers.
- Before a defective product can be authorized to send in for repair, it must first go through the troubleshooting process with a member of the Vaddio Technical Support team.
- Products authorized for repair must have a valid RMA (Return Material Authorization) number.
 - Vaddio RMA Team will issue the RMA number.
 - An RMA number is to be included in all correspondence with Vaddio.
 - The RMA number must appear clearly on the shipping label (not the box) when the product is returned.
 - A packing slip must be included on the inside of the box with the RMA number listed and reason for RMA return.
- Products received at Vaddio that do not have a valid RMA number clearly marked on the outside of the shipping container may be refused and returned to sender.
- Boxes showing external damage will be refused and sent back to the sender regardless of the clearly marked RMA number and will remain the responsibility of the sender.

RMA Charges (Restocking): All qualified returns must be made in unopened, original packaging with all original materials.

- Initial shipments of equipment that are refused upon attempted delivery, for any reason, are subject to restocking charges.
- The Dealer has up to 60 days from the date of purchase to return Vaddio product for credit for future purchases of Vaddio product only.
- The Dealer has 61 to 90 days from the date of purchase to return Vaddio product with a 15% restocking fee or \$50.00 fee, whichever amount is greater
- The Dealer has up to 30 days from the date of purchase to return OEM and other manufacturer's products with a 15% restocking fee or \$50.00 fee, whichever amount is greater.
- NOTE: Special Order products from other manufacturers (identified in the Vaddio Price Guide as noncancelable, nonreturnable and not refundable) are not eligible for advance replacement from Vaddio.

Advance Replacement Policies: For Vaddio manufactured products, advance replacement will be provided for up to one (1) year after the initial shipment of products.

- NOTE: OEM and other manufacturer's products are excluded from the Vaddio advance replacement policy. Advance replacement will be provided for up to 30 days after initial shipment of OEM products. Thereafter, a return to Vaddio and factory repair is offered during the other manufacturer's warranty period. Vaddio will determine if the returned product is qualified for the OEM warranty.
- NOTE: Special Order products from other manufacturers (identified in the Vaddio Price Guide as noncancelable, nonreturnable and not refundable) are not eligible for advance replacement from Vaddio.

Advance Replacement Procedures: The Vaddio Dealer must submit a non-revocable purchase order for advance replacement equipment at normal dealer pricing. Credit shall be issued upon complete product return (including all accessories) for dealers with Net 30 terms. For credit card accounts, charges will be assessed to the credit card for the replacement and credited back upon complete product return.

- Returns must be made in the original Vaddio packaging with all original materials if at all possible. Vaddio products with missing original materials will be billed to the dealer at dealer price.
- NOTE: OEM products must be returned in the original packaging with all materials and the RMA number written on the shipping label only and not on the OEM box. If the return is incomplete and/or the OEM box is defaced, the product shall be returned to the dealer and the RMA will not be credited.
- Equipment returned with “No Trouble Found” after advanced replacement will be assessed a full 15% or \$50.00 restocking fee (whichever is greater) for each item and may also be assessed for additional charges to compensate for wear, damages and reconditioning.
- All returns must be accompanied by RMA # as stated above.
- All Advanced Replacement products are sent via 2-day service in the continental USA. If the product is requested to be sent via priority or overnight shipping, the Dealer shall pay shipping costs. The dealer can elect to supply their preferred shipping account number.
- International customers are responsible for all freight charges for equipment returned to Vaddio, including international shipping, taxes, and duties, insurance and all other associated logistic charges.

Warranty Repair Terms and Procedures: Vaddio will repair any product free of charge, including parts and labor, within the terms outlined in the warranty agreement for that product.

- Customers must provide proof of the product’s purchase date.
- Product that is within the warranty period will be repaired under the non-warranty terms if:
 - The equipment has been damaged by negligence, accident, act of God, mishandling, used with the incorrect, modified or extended power supply or has not been operated in accordance with the procedures described in the operating and technical instructions.
 - The equipment has been altered or repaired by other than the Manufacturer or an authorized service representative.
 - Adaptations or accessories other than those manufactured or provided by the Manufacturer have been made or attached to the equipment, which in the determination of the Manufacturer, shall have affected the performance, safety or reliability of the equipment; or the equipment’s original serial number has been modified or removed.
- Customer is responsible for shipping charges to send defective product under warranty to Vaddio. Vaddio will pay ground service return shipping charges during the 2nd year of the warranty period.
- Standard return shipping method for products under warranty, but out of the advance replacement warranty period, is ground shipment. Extra charges associated with priority shipping, when requested, will be the responsibility of the customer.

Non-Warranty Repair Terms: Vaddio will repair any non-obsolete product that does not meet the terms of the warranty. Non-warranty repair terms are as follows:

- The customer is responsible for, and agrees to pay, all parts and labor costs associated with the repair. Standard non-warranty repair charges are outlined below.
- Customers must provide payment method and one of the following, prior to receiving an RMA:
 - Hard copy of a PO, for dealers with Net 30 terms and in good standing with Vaddio.
 - Valid credit card number - Credit card will be charged upon shipping repaired product back to customer.
- Request for COD: Customers will be notified of COD charges prior to shipping repaired unit.
- Customer is responsible for all shipping charges both to and from Vaddio, and may use their own carrier.
- Customers will receive a courtesy call notifying them of total repair charges prior to return shipping.

Non-Warranty Repair Charges: Total repair charges (per unit) for a non-warranty repair consist of the following:

- Cost of any replacement parts needed to repair the defect.
- Labor costs billed per hour after minimum charges/time.
- Labor charges include troubleshooting and repair time only.
- Burn-in time and final test time is not included in the labor charges.
- Labor time is rounded to the nearest quarter hour.
- Labor charges are billed at the prevailing rate for the category of equipment repaired, after minimum charges/time. For prevailing labor rates, please contact the Vaddio technical support.
- All shipping and handling costs are the responsibility of the customer for non-warranty repairs.

Minimum Labor Charges: All non-warranty repairs are subject to a minimum evaluation/repair labor charge even if there is no problem found. Please contact Vaddio technical support for the current applicable rate.

Repair Charge Estimates: Estimates on repair charges for a specific problem will not be given before an RMA is issued and the actual product has been evaluated by a Vaddio technician. Repair estimates will be given after the repair department receives and evaluates the unit.

- Customers requesting an estimate on repair charges must do so up front when they call in for an RMA. The RMA team will call or email with the estimate after evaluating the unit and before proceeding with the repair.
- Any product evaluated for a repair estimate is still subject to the minimum labor charges even if the customer decides not to proceed with the repair.
- Vaddio does not guarantee estimates given on repair charges. Actual repair costs may exceed the estimate.
- Customer is responsible for actual repair charges, regardless of estimate.

Repair Policy Notes:

- **Duration of Repair:** Products are repaired on a first come first serve basis. The turn-a-round time of a particular repair is dependent upon circumstances such as product type, the nature of the problem and current repair volumes. Requests for expedited repair service will be considered on a case-by-case basis.
- **Repair Warranty:** Vaddio guarantees all of its repair work, performed on non-warranty items, for 90 days from the day the repaired product is shipped back to the customer. If the original problem described was not resolved or reoccurs within the 90-day period, Vaddio will repair the unit free of labor charges. However additional material charges may apply unless the parts used to affect the repair are again deemed defective.

Photo Credits

This guide may include some or all of these photos.

European Space Agency (ESA) astronaut Samantha Cristoforetti, a Flight Engineer with Expedition 42, photographs the Earth through a window in the Cupola on the International Space Station

By NASA - https://blogs.nasa.gov/ISS_Science_Blog/2015/03/06/women-in-space-part-two-whats-gender-got-to-do-with-it/, Public Domain, <https://commons.wikimedia.org/w/index.php?curid=38834990>

Carl Sagan, Bruce Murray, Louis Friedman (founders) and Harry Ashmore (advisor), on the occasion of signing the papers formally incorporating The Planetary Society

By credit NASA JPL - JPL, Public Domain, <https://commons.wikimedia.org/w/index.php?curid=1180927>

Main Control Room / Mission Control Room of ESA at the European Space Operations Centre (ESOC) in Darmstadt, Germany

By European Space Agency - ESOC flickr, Credit: ESA - Jürgen Mai, CC BY-SA 3.0-igo,

<https://commons.wikimedia.org/w/index.php?curid=36743173>

Expedition 42 on orbit crew portrait, International Space Station, Mar. 7, 2015 – Barry Wilmore (Commander) Top, Upside down, to the right cosmonaut Elena Serova, & ESA European Space Agency Samantha Cristoforetti. Bottom center US astronaut Terry Virts, top left cosmonauts Alexander Samokutyaev and Anton Shkaplerov.

By NASA - <https://www.flickr.com/photos/nasa2explore/16166230844/>, Public Domain,

<https://commons.wikimedia.org/w/index.php?curid=38931301>

European Space Agency astronaut Luca Parmitano, Expedition 36 flight engineer, outside the International Space Station

By NASA - <http://spaceflight.nasa.gov/gallery/images/station/crew-36/html/iss036e016704.html>, Public Domain, <https://commons.wikimedia.org/w/index.php?curid=27263573>

Chris Cassidy, Luca Parmitano, and Karen Nyberg, ISS, 2013. Photo Credit: NASA

Nicolas Altobelli, Rosetta Scientist at ESA's European Space Astronomy Centre, Villanueva de la Cañada, Madrid, Spain

By European Space Agency - Nicolas Altobelli talks to the media, CC BY-SA 3.0-igo,

<https://commons.wikimedia.org/w/index.php?curid=36743144>

Andrea Accomazzo, ESA Rosetta Spacecraft Operations Manager, providing a live update from the Main Control Room at ESA's European Space Operations Centre, Darmstadt, Germany during the Rosetta wake-up day.

By European Space Agency - Live update from the Main Control Room, CC BY-SA 3.0-igo,

<https://commons.wikimedia.org/w/index.php?curid=36743150>

Sleeping goose

By ladiypine - Own work, CC BY-SA 3.0, <https://commons.wikimedia.org/w/index.php?curid=1695227>

By Rick Dikeman - Image:Wayne Gretzky 1997.jpg, CC BY-SA 3.0,

<https://commons.wikimedia.org/w/index.php?curid=945698>

Photo AS11-40-5948, Aldrin assembles seismic experiment, by National Aeronautics and Space Administration, courtesy of the NASA History Office and the NASA JSC Media Services Center

Index

A

- admin password 23, 30
 - changing 30
 - default 23
- AEC 13-15
- AGC (automatic gain control) 53
- anatomy of the system 9-10
- API 78
 - Telnet 78
- audio 10, 19, 52-54, 76-77
 - connections 10
 - controls 53-54
 - delay 54
 - muting 19, 52, 77
 - volume 76
 - volume controls 52
- Audio page (web) 52-54
- auto focus 42, 69
- auto iris 40, 71-72
- auto white balance 40-41, 71-72

B

- backing up a configuration 32
- backlight compensation 40-41, 71-72
- bandwidth 48
- behavior on power-up 18
- bit rate (IP streaming setting) 48
- blue gain 40-41, 71-72
- browser compatibility 21

C

- cable connectors 10, 13
- calibration fault, correcting 73, 88
- camera ID setting (DIP switch) 60
- camera mount 11-12
 - installing 12
- camera placement 11
- camera select 19-20, See also camera ID setting (DIP switch)
- camera specifications 84
- camera standby position 63
- capabilities 3, 84
- CCU settings 41, 70-72
- ceiling-mounted cameras 12

- cheat sheet 19-20, 41
 - color adjustment 41
 - lighting and image quality 41
- chroma setting 40-41, 71-72
- cleaning 89
- color codes for status light 18, 87
- color settings 40-41, 71-72
- command history 82
- compatibility, browsers 21
- conferencing 45-46
- configuration, saving or restoring 32
- connecting the speaker 17
- connection diagram 14-15
- connectors 10
- Constant Bit Rate (IP streaming setting) 48
- Control Devices page (web) 55
- controls available to admin 23
- controls available to non-admin user 23
- Controls page (web) 62
- custom home position 38

D

- damage, preventing 4, 11, 13
- default IP address 26
- default settings, restoring 81, 89
- detail setting 40-41, 71-72
- DHCP vs. non-DHCP networks 26
- diagnosing issues 80, 85
- diagnostic logs 37
- Diagnostics page (web) 37
- diagram, connection 14-15
- DIP switches 60
 - soft 60
- directional controls 19-20, 63
- dynamic range (audio) 53-54

E

- echo cancellation 13-15, 53
- equalizer 54

F

- factory defaults, restoring 81, 89
- fault isolation 80, 85
- firmware update 34
- firmware version 82
- focus 19-20, 42, 69

G

gain 40-41
 blue 40-41
 iris 41
 red 40-41
 gamma setting 40-41
 getting help 37
 guest access 30

H

HDMI audio embedder 15
 Help page (web) 37
 home position 38, 63, 66
 custom 38
 hostname 28
 HTTPS, enabling or requiring 31

I

image flip setting (DIP switch) 60
 importing a configuration 32
 inactive sessions (web interface) 30
 indicator light 18, 60, 73, 87
 behavior 60, 73
 color scheme 60
 enabling/disabling 60
 meaning of colors 18, 87
 information, conference room 32
 installation 12, 14-17
 basic connections 14-15
 camera 16
 camera mount 12
 speaker 17
 inverted installation 12
 IP address 19-21, 26, 28
 camera, discovering 21
 default 21, 26, 28
 static, configuring 26, 28
 IP streaming 45, 47-50, 78-79
 enabling/disabling 45
 settings 47-50, 78-79
 IR cut filter 74
 IR remote 19-20
 iris settings 41, 71-72

L

labels, room 32
 LED control 73

light, status indicator 18, 60, 73, 87
 behavior 60, 73
 color scheme 60
 enabling/disabling 60
 meaning of colors 18, 87
 lighting settings 71-72
 location of the camera 11, 32
 locations of connectors 10
 log files 37
 login, admin 23
 low-light adjustment 74
 low-power (standby) state 63, 73-74

M

macros 55-57
 creating and editing 56
 testing 57
 manual focus 19-20, 42, 69
 Max Bandwidth (IP streaming setting) 48
 media player 45
 mic boost 53
 MicPOD ports 10
 microphone 19
 muting 19
 microphones 14-15, 52-53, 77
 adjusting 53
 muting 52, 77
 motor calibration 73, 88
 mount 11-12
 installing 12
 mounting the camera 11, 16
 mounting the speaker 17
 MTU (IP streaming setting) 51
 muting 19, 52, 62, 75, 77
 audio inputs 52, 77
 audio outputs 52, 77
 microphones 19, 77
 speakers 77
 video 62, 75

N

navigation buttons, hiding/showing 24
 network configuration 28, 80
 current 80
 Networking page (web) 28
 noise cancellation 53
 NTP server 29

O

One Push White Balance 41
 operating environment 11, 89

P

packing list 4
 page 28, 30-32, 37, 45-55, 62
 Audio 52-54
 Control Devices 55
 Controls 62
 Diagnostics 37
 Help 37
 Networking 28
 Room Labels 32
 Security 30-31
 Streaming 45-51
 pan 19-20, 43-44, 63, 66
 direction 44
 speed 43, 66
 pan/tilt recalibration 73, 88
 part numbers 4
 passwords 23, 30
 admin, default 23
 user, default 23
 Path (IP streaming setting) 49
 performance specifications 84
 physical and environmental specifications 84
 ping command 80
 point light compensation 41
 power connector 10
 power on/power off 18-20, 63, 74
 precautions 4, 11
 for handling the camera 4
 for operating the system 11
 presets 19-20, 38, 40, 63, 70
 clearing 20
 moving to 63, 70
 renaming 40
 setting 20, 38, 70
 Pro A/V status light color scheme 60
 product capabilities 3, 84
 product returns and repairs 96

Q

Quality/Quantization (IP streaming setting) 48
 quick reference 19-20, 41
 remote control 19
 Vaddio IR Remote Commander 20

R

ready state 63, 74
 rebooting 36, 81
 recalibration, pan and tilt 73, 88
 red gain 40-41, 71-72
 remote control 19-20
 requirements 11
 installation 11
 mounting 11
 reset 73, 88. See also rebooting; restoring
 default settings
 pan and tilt motors 73, 88
 Resolution (IP streaming setting) 47-48
 restoring a configuration 32
 restoring default settings 81, 89
 RJ-45 connectors 13
 room information 32
 Room Labels page (web) 32
 RTMP streaming 45, 50
 RTSP streaming 45, 49

S

saving a configuration 32
 Security page (web) 30-31
 settings, default, restoring 81, 89
 shelf, camera mount 12
 site requirements 11
 soft DIP switches 60
 software update 34
 solving problems 85
 speaker 14-15, 17, 19, 54
 mounting and connecting 17
 volume, adjusting 19
 speaker port 10
 speakers 77
 muting 77
 specifications 84
 speed 19-20, 42-43, 66-69
 focus 69
 Global Preset (defined) 42
 Global Preset Non-Tri-Sync, setting 43
 manual (defined) 42
 manual, setting 43
 pan 43, 66
 tilt 43, 67
 zoom 19-20, 43, 68
 SSL certificate 31
 standby (low-power) state 63, 73-74

- static IP address 26, 28
 - configuring 26, 28
- status light 18, 60, 73, 87
 - behavior 60, 73
 - color scheme 60
 - enabling/disabling 60
 - meanings of colors 18, 87
- storage environment 89
- storing a configuration 32
- stream viewer 45
- streaming 45-50, 78-79
 - configuring 46
 - enabling/disabling 45
 - IP 45, 47-48
 - settings 46, 48-50, 79
 - state 78
 - USB 45-46
- Streaming page (web) 45-51
- streaming URL 49
- super-wide mode setting (DIP switch) 60
- supported web browsers 21
- switch settings 12, 60
 - image flip (soft DIP switch) 12
 - in web interface 60
- synchronizing audio and video 54
- syntax help, Telnet commands 82

T

- technical specifications 84
- technical support 37
- Telnet 31
 - disabling access via 31
- Telnet API 78
- Telnet commands 65-75, 79-83
 - syntax help 65, 82
 - typographical conventions 65
- Telnet session 65, 82-83
 - ending 83
 - history 82
- temperature, operating and storage 89
- testing 57, 59
 - macros 57
 - triggers 59
- third-party control 65
- tilt 19-20, 43, 63, 67
 - speed 43
- time zone 29
- trigger command, failure to execute 59
- trigger devices 55

- triggers 55, 58-59, 78
 - defining 58
 - deleting 58
 - testing 59
- troubleshooting 80, 85

U

- UC conferencing status light color scheme 60
- update 34
- URL, RTSP streaming 49-50
- USB streaming 45-46, 79
 - configuring 46
 - enabling/disabling 45
 - settings 79
- user password 23, 30
 - changing 30
 - default 23

V

- Vaddio IR Remote Commander 19-20
- Variable Bit Rate (IP streaming setting) 48
- version, firmware 82
- video mute 62, 75
- Video Quality (IP streaming setting) 47
- video resolution (IP streaming setting) 47
- virtual DIP switches 60
- visual parts identification 9
- volume controls 19, 52, 76

W

- wall mount 12
 - installing 12
- warranty 11, 96
- web browsers supported 21
- web interface 21, 24, 26, 28, 30-32, 37, 45-55, 62
 - accessing 21
 - accessing via direct connection 26
 - Audio page 52-54
 - Control Devices page 55
 - Controls page 62
 - Diagnostics page 37
 - Help page 37
 - navigation button labels 24
 - Networking page 28
 - Room Labels page 32
 - Security page 30-31
 - Streaming page 45-51
- wide dynamic range setting 41

Z

zoom 19-20, 43, 63, 68
speed 19-20, 43, 68

Vaddio is a brand of Legrand AV Inc. · www.legrandav.com · Phone 800.572.2011 / +1.763.971.4400 · Fax +1.763.971.4464 · Email av.vaddio.support@legrand.com

Visit us at support.vaddio.com for firmware updates, specifications, drawings, manuals, technical support information, and more.

©2019 Legrand AV Inc.

Vaddio is a registered trademark of Legrand AV Inc. All other brand names or marks are used for identification purposes and are trademarks of their respective owners. All patents are protected under existing designations. Other patents pending.

A brand of  legrand®

Commercial AV Brands Chief | Da-Lite | Middle Atlantic | Projecta | Vaddio

vaddio®