

# SNE SERIES DIGITAL ENCLOSURE

Configured specifically to address the needs of security systems consisting of a mix of analog and digital equipment and cabling



## FEATURES

- Fully welded construction provides the following weight capacities:
  - UL Listed load capacity – 3,000 lbs.
  - Caster load capacity – 1,600 lbs.
  - Seismic certified capacity – 1,050 lbs.
- Configured for passive (vented) cooling
- Ships fully configured, and includes
  - 70% open area vented front door
  - Solid or split 70% open area rear doors
  - Pair of split flush mount locking side panels
  - Set of Lever Lock™ mounting brackets
  - Casters
  - Leveling feet
- Available in 24" and 30" widths
- 36", 42" and 48" overall depths
- Includes 2 pairs of cage nut fully adjustable rackrail and 6MM mounting hardware
- Doors accommodate industry standard 150 x 25mm electronic door locks



# SNE SERIES DIGITAL ENCLOSURE

## OPTIONS

- Split lift-off cable chase shall be 4.4" wide and mount in-between enclosures, model # SNE-CC-\_\_LT (refer to drawing for model number)
- Cable duct shall be model # SNE-\_\_DUCT-4X6-\_\_ and be available packaged or installed (refer to chart)
- Cable chase shall be model # SNE-\_\_-CC12-45\_\_ (refer to chart), and shall be 12" wide x \_\_" deep x 83.33" high
- Front air dam/zero-U panel mount shall be model # SNE-\_\_-FAD-PM-\_\_ (refer to drawing for model #)
- Bracket for top cable pass-through enclosure to enclosure shall provide the ability to pass cables from enclosure to enclosure when ganged together, and shall be model number SNE-TCB-\_\_ (36, 42, 48)
- 6" wide wire type vertical lace shall be model number LACE-WB6-\_\_ (24, 42, 45)
- Seismic Zone-4 and Seismic Use Group III compliancy floor anchor kit shall be model # SNE-\_\_-Z4 (24, 30)
- SNE Universal Power Bracket shall be model number SNE-UVPB-4245-S and fit 42RU and 45RU models

## SPECIFICATIONS

EIA compliant 19" gangable digital security network enclosure shall be Middle Atlantic Products model #SNE\_\_D-\_\_-P\_ (refer to chart). Overall dimensions shall be \_\_"H x \_\_"W x \_\_"D (refer to chart). Useable height shall be \_\_ rackspaces, useable depth shall be \_\_" (refer to chart). Fully welded construction shall provide a UL Listed load capacity of 3,000 lbs., and casters shall provide a capacity of 1,600 lbs. SNE shall come equipped with two pairs of fully adjustable steel cage nut rackrail with 6MM mounting hardware in universal EIA spacing, black e-coat finish and numbered rackspaces. SNE shall include 70% vented front door, \_\_ rear doors (refer to chart), and flush locking split side panels. SNE shall include pair of Lever Lock™ mounting brackets. SNE shall have pre-threaded 5/16"-18 ganging holes. SNE shall be capable of ganging while fully loaded, using bolts only. SNE shall have passive cooling, front to rear. SNE shall have marked rackrail depth indicators. SNE shall be of fully welded construction. SNE shall be finished in an environmentally friendly, durable black powder coat. SNE Series enclosures shall satisfy the 2007 & 2010 CBC; 2006, 2009 & 2012 IBC; ASCE 7-05 (2005 Edition) & ASCE 7-10 (2010 Edition) and the 2006 & 2009 editions of NFPA 5000 for use in areas of high seismicity, Seismic Use Group III, Zone 4 or Seismic Design Category (SDC) "D" with lateral force requirements for protecting 1,050 lbs. of essential equipment in locations with the highest level of seismicity and top floor installations with an Importance factor (Ip) of 1.5 when used with SNE-Z4 seismic floor anchor bracket. SNE shall be UL Listed in the US and Canada to the UL-2416 (NWIN) category. SNE shall be GREENGUARD Gold Certified. SNE shall be manufactured by an ISO 9001 and ISO 14001 registered company. SNE enclosure shall be warranted to be free from defects in material or workmanship under normal use and conditions for the lifetime of the rack.



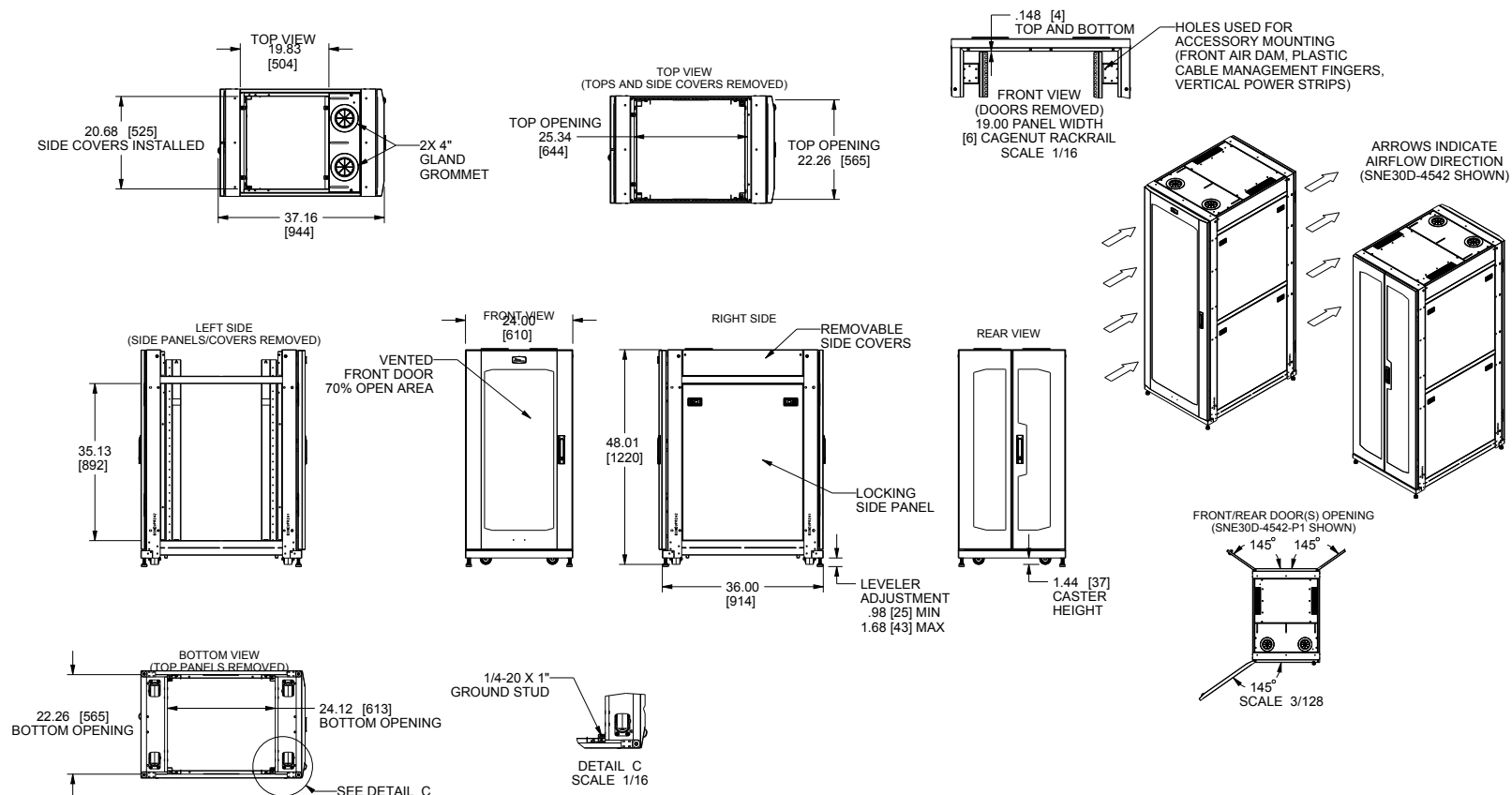
PRODUCT CERTIFIED FOR  
LOW CHEMICAL EMISSIONS  
UL COM/GG  
UL 2818



# SNE SERIES DIGITAL ENCLOSURE

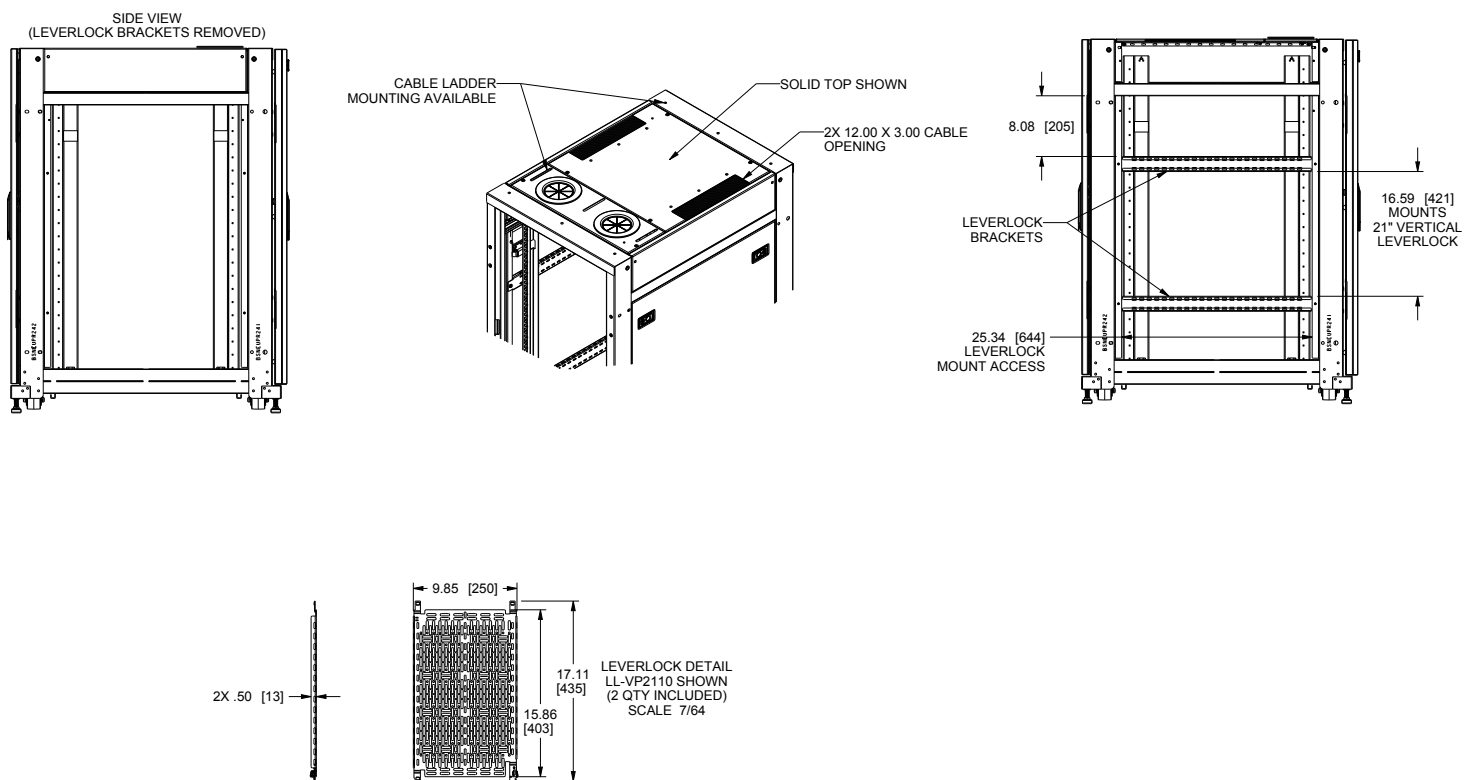
## BASIC DIMENSIONS

- NOTES:  
1. ALL DIMENSIONS SHOWN IN FORMAT: INCHES [MM]  
2. FRONT DOOR, REAR DOORS, AND SIDE PANELS ARE KEYS THE SAME.



# SNE SERIES DIGITAL ENCLOSURE

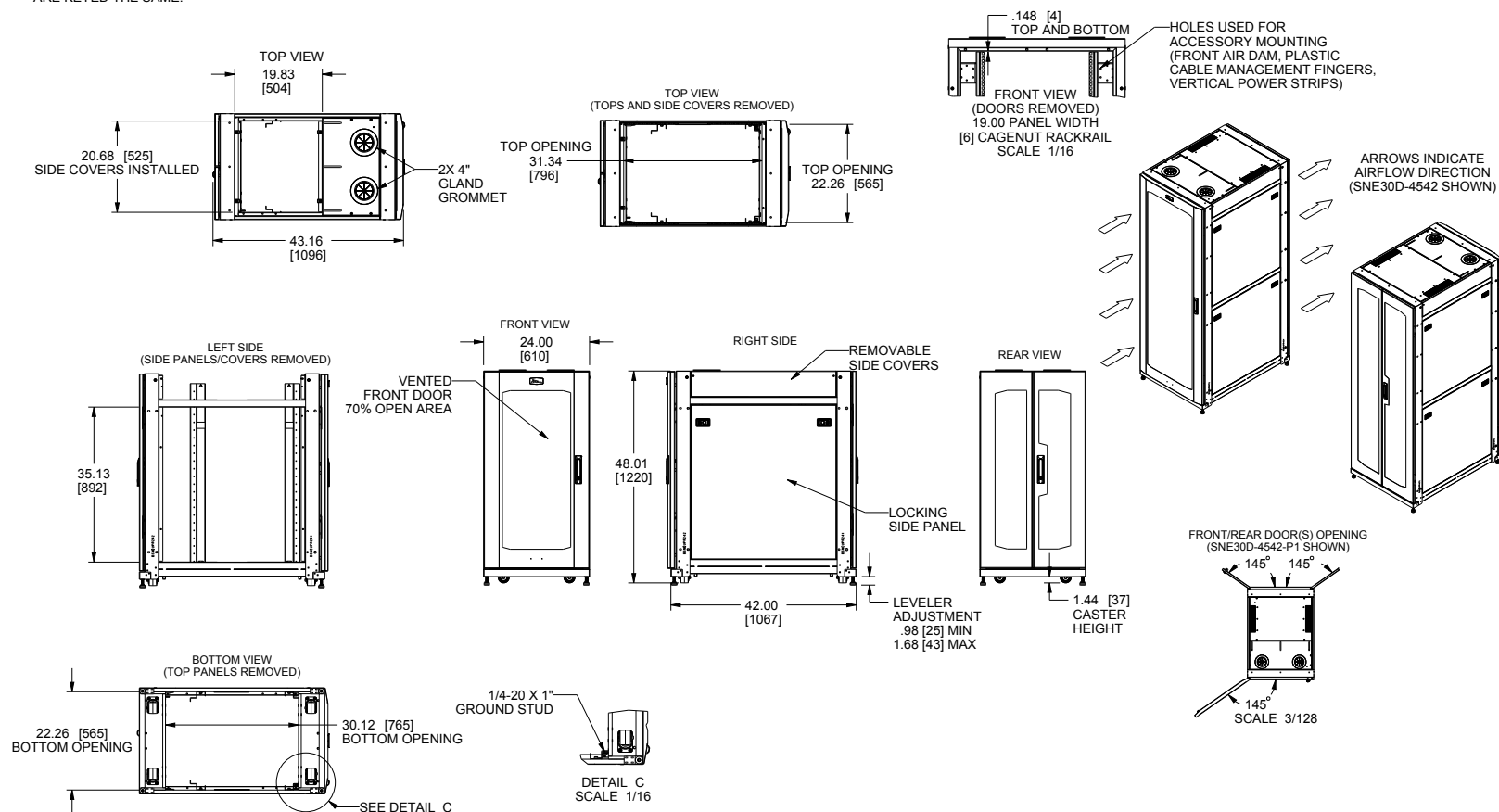
## BASIC DIMENSIONS



# SNE SERIES DIGITAL ENCLOSURE

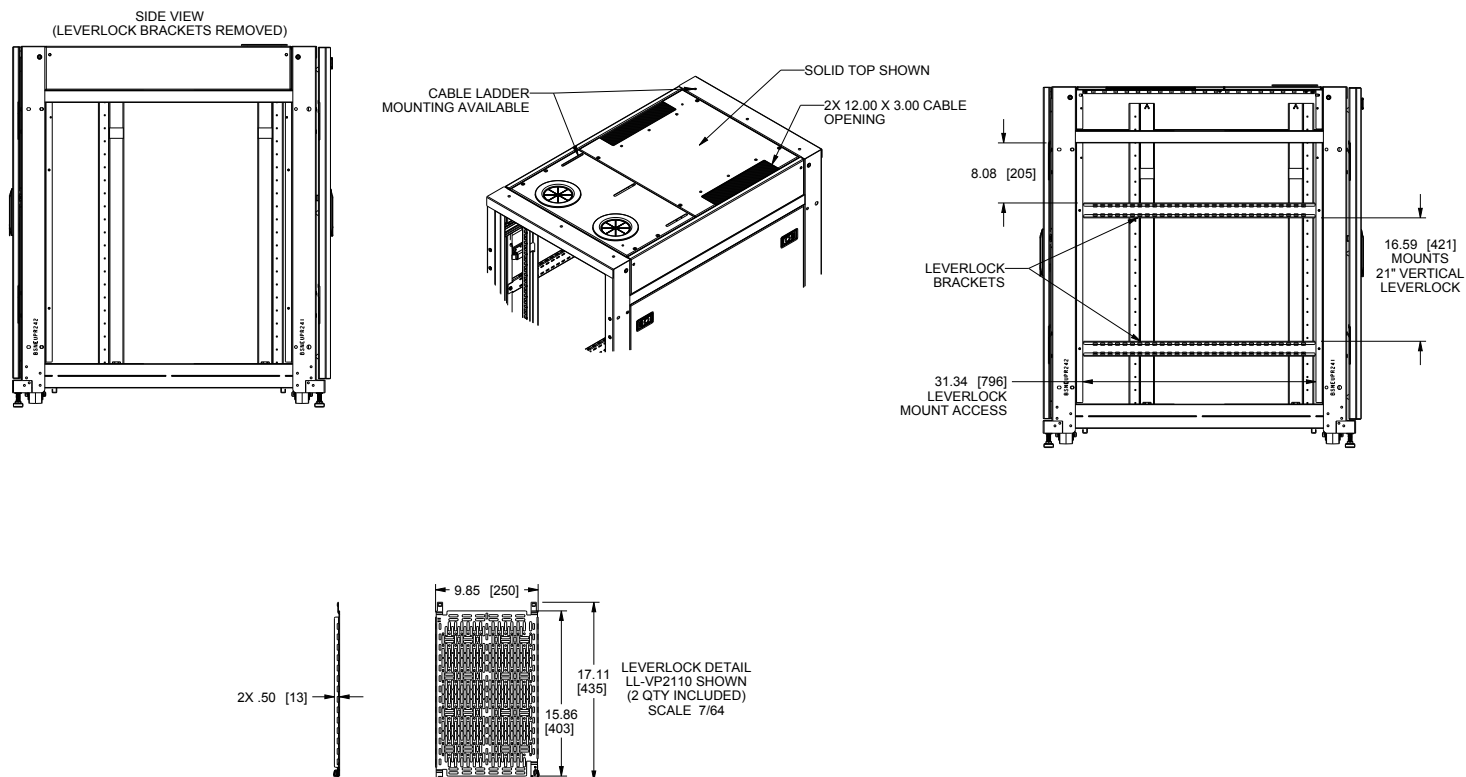
## BASIC DIMENSIONS

NOTES:  
1. ALL DIMENSIONS SHOWN IN FORMAT: INCHES [MM]  
2. FRONT DOOR, REAR DOORS, AND SIDE PANELS  
ARE KEYED THE SAME.



# SNE SERIES DIGITAL ENCLOSURE

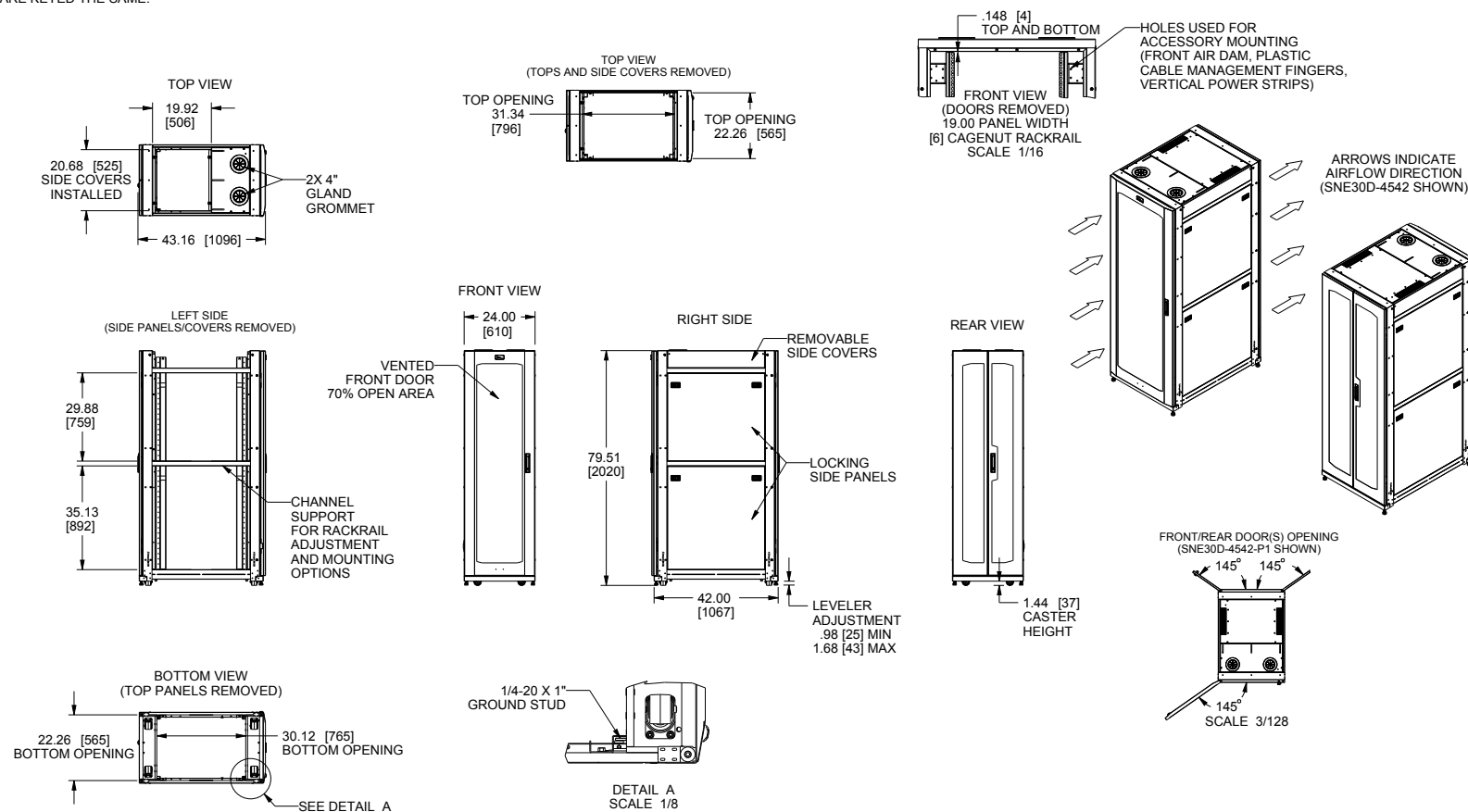
## BASIC DIMENSIONS



# SNE SERIES DIGITAL ENCLOSURE

## BASIC DIMENSIONS

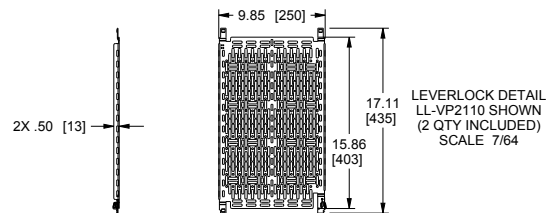
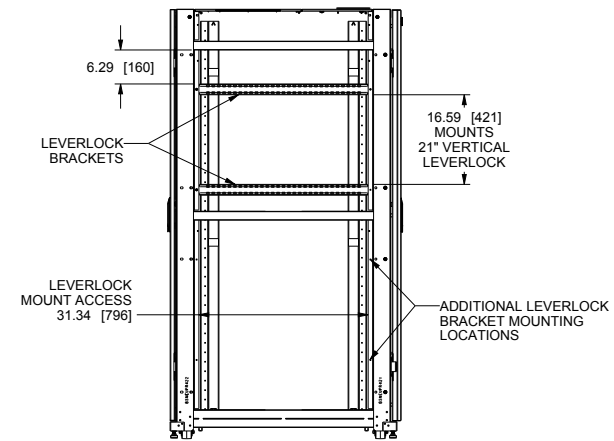
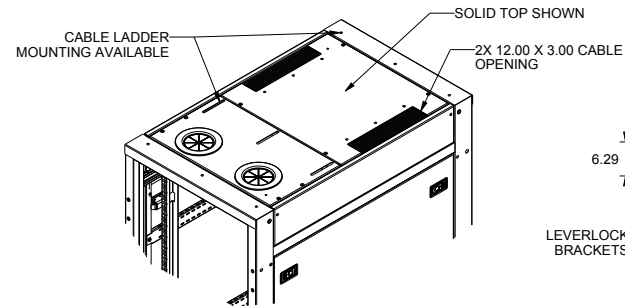
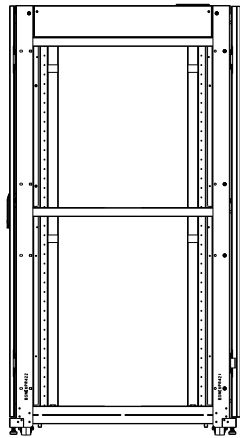
- NOTES:  
1. ALL DIMENSIONS SHOWN IN FORMAT: INCHES [MM]  
2. FRONT DOOR, REAR DOORS, AND SIDE PANELS  
ARE KEYS THE SAME.



# SNE SERIES DIGITAL ENCLOSURE

## BASIC DIMENSIONS

SIDE VIEW  
(LEVERLOCK BRACKETS REMOVED)

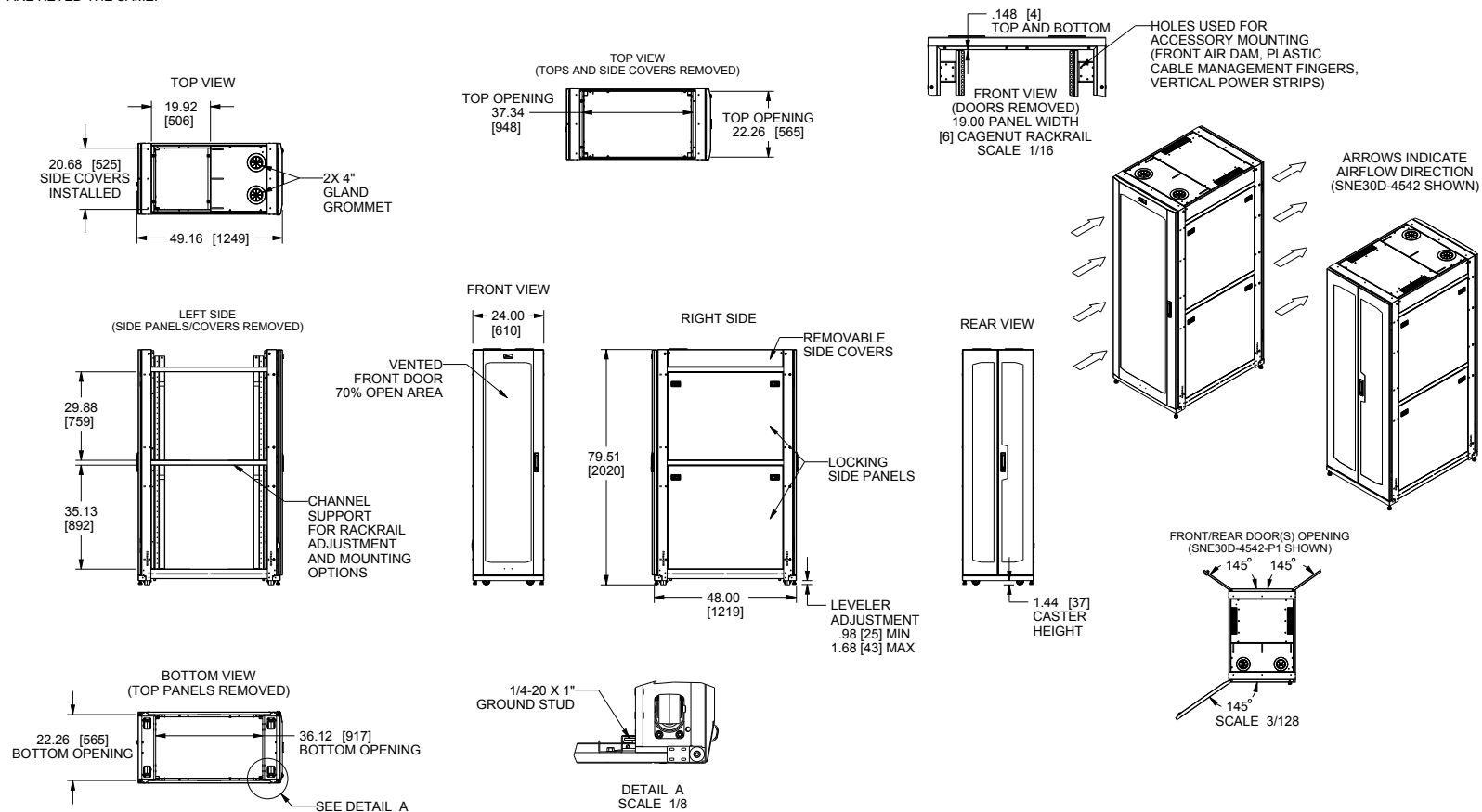




# SNE SERIES DIGITAL ENCLOSURE

## BASIC DIMENSIONS

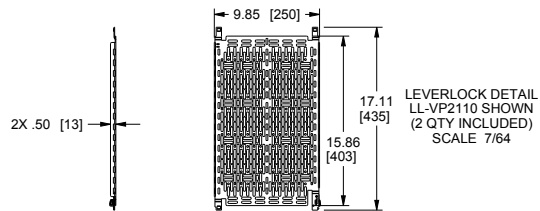
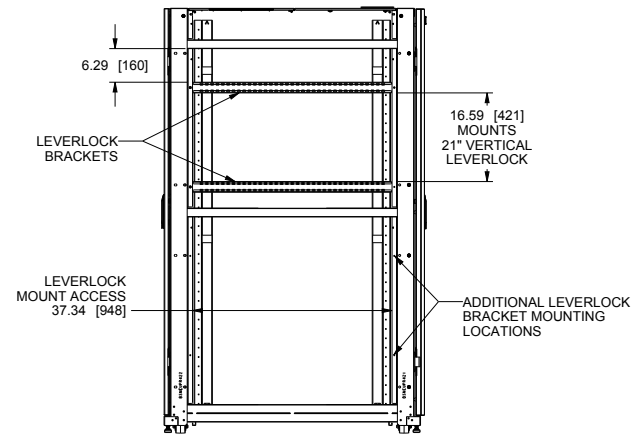
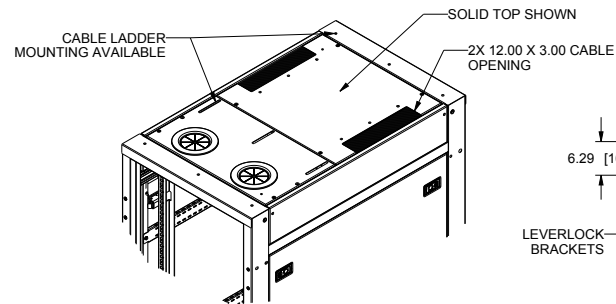
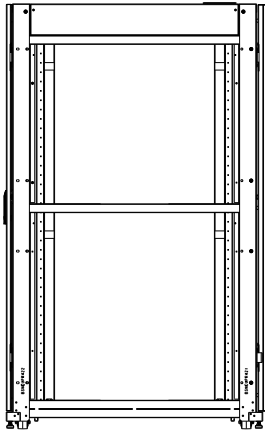
- NOTES:  
1. ALL DIMENSIONS SHOWN IN FORMAT: INCHES [MM]  
2. FRONT DOOR, REAR DOORS, AND SIDE PANELS  
ARE KEYED THE SAME.



# SNE SERIES DIGITAL ENCLOSURE

## BASIC DIMENSIONS

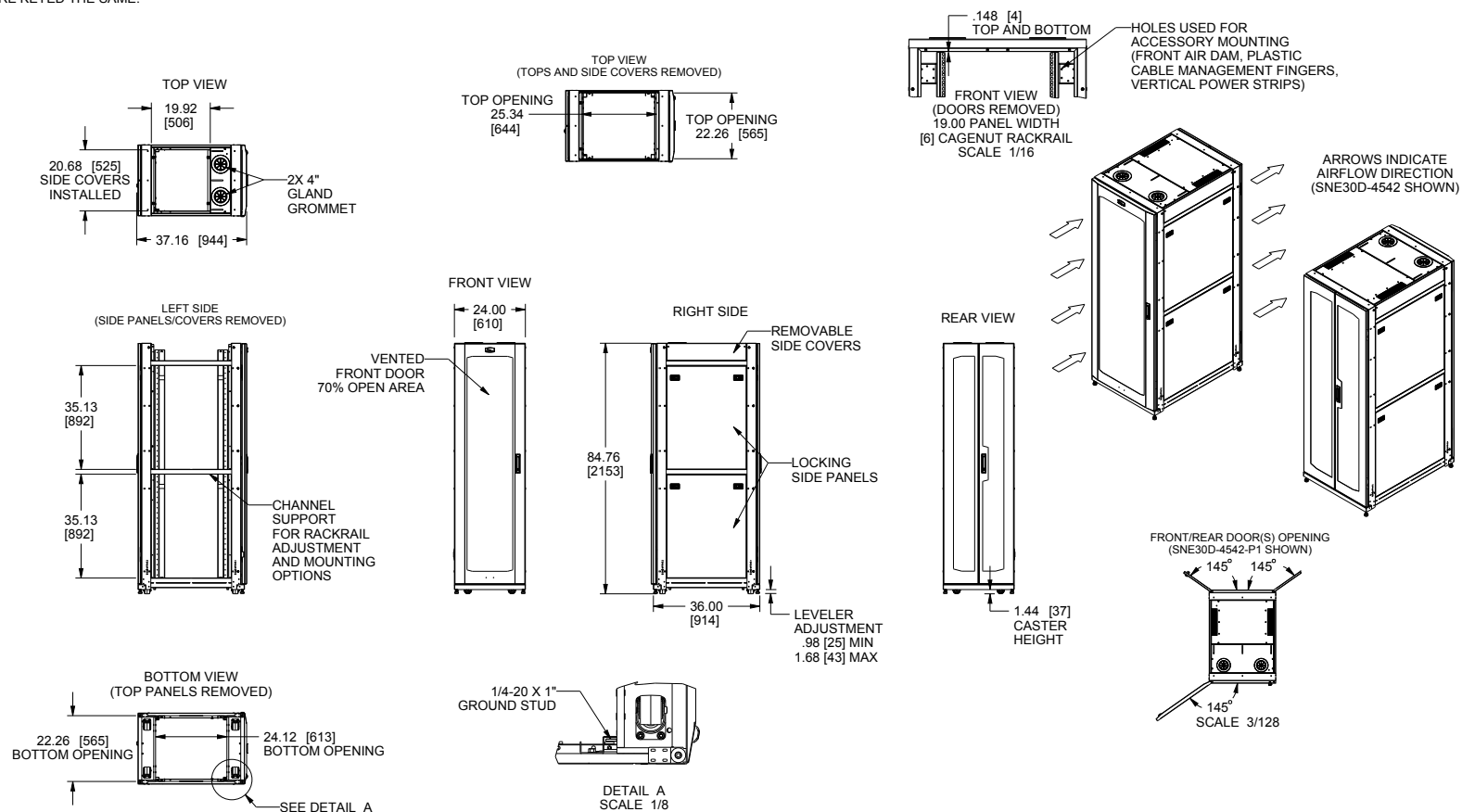
SIDE VIEW  
(LEVERLOCK BRACKETS REMOVED)



# SNE SERIES DIGITAL ENCLOSURE

## BASIC DIMENSIONS

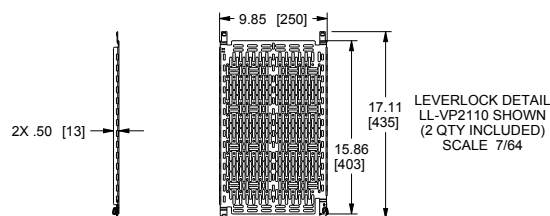
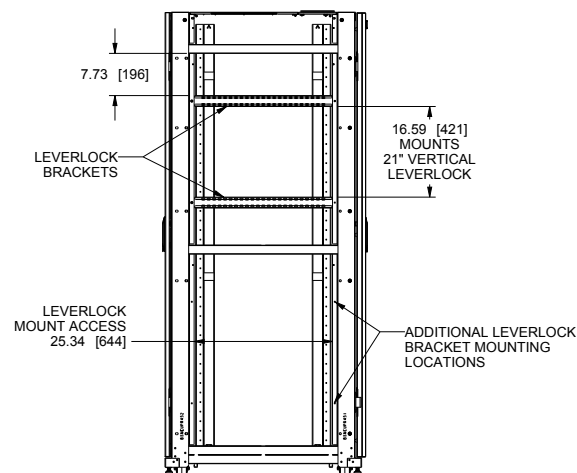
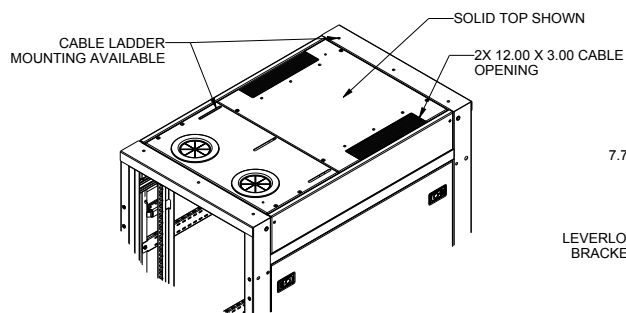
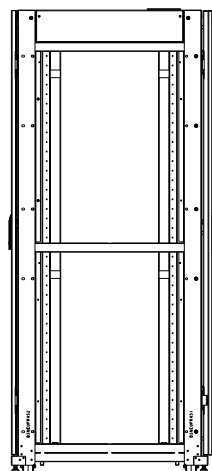
- NOTES:  
1. ALL DIMENSIONS SHOWN IN FORMAT: INCHES [MM]  
2. FRONT DOOR, REAR DOORS, AND SIDE PANELS  
ARE KEYS THE SAME.



# SNE SERIES DIGITAL ENCLOSURE

## BASIC DIMENSIONS

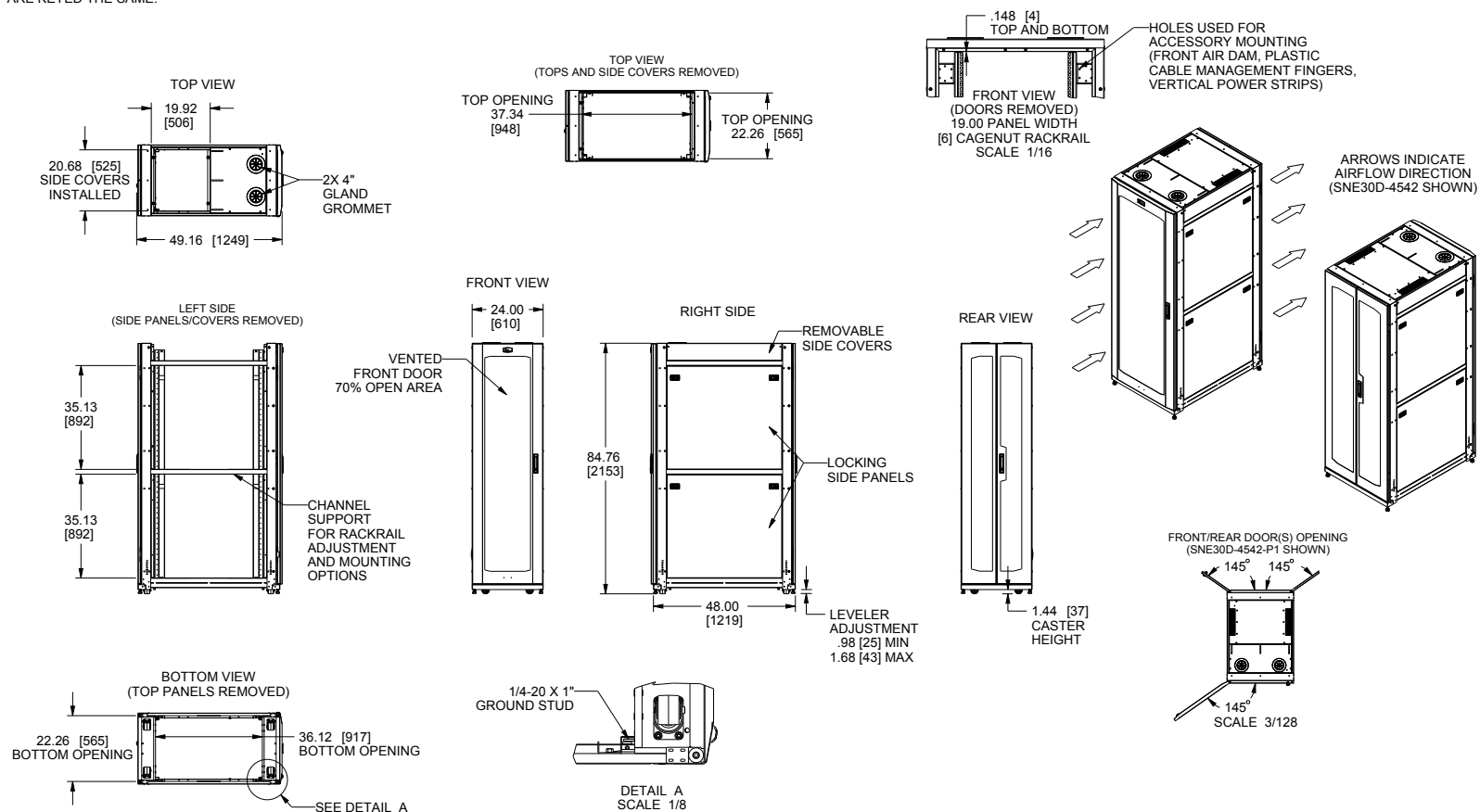
SIDE VIEW  
(LEVERLOCK BRACKETS REMOVED)



# SNE SERIES DIGITAL ENCLOSURE

## BASIC DIMENSIONS

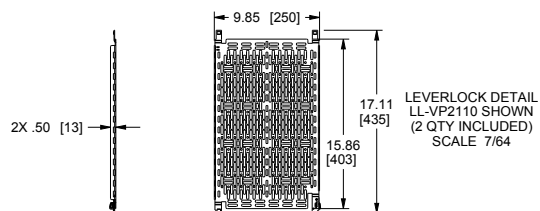
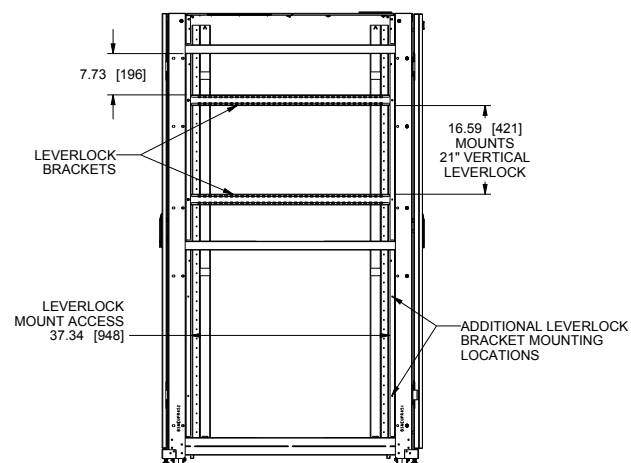
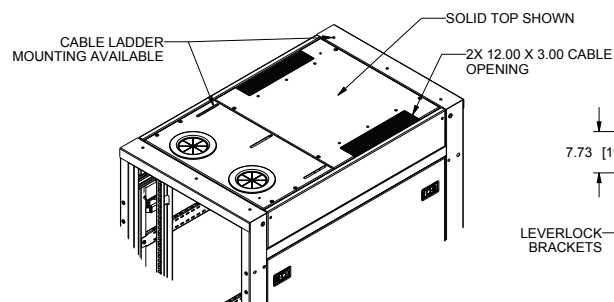
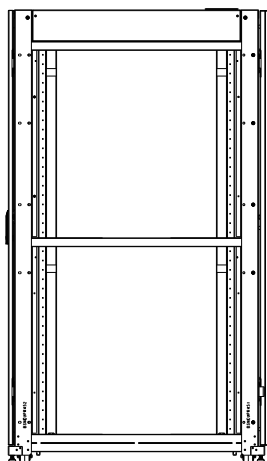
- NOTES:  
1. ALL DIMENSIONS SHOWN IN FORMAT: INCHES [MM]  
2. FRONT DOOR, REAR DOORS, AND SIDE PANELS ARE KEYS THE SAME.



# SNE SERIES DIGITAL ENCLOSURE

## BASIC DIMENSIONS

SIDE VIEW  
(LEVERLOCK BRACKETS REMOVED)



SNE24D-4548-P1 Rev B

**LEGRAND | AV COMMERCIAL BRANDS**  
C2G | Chief | Da-Lite | Luxul | Middle Atlantic | Vaddio | Wiremold

WHAT GREAT SYSTEMS ARE BUILT ON™ | [legrandav.com](https://www.legrandav.com)

USA 800.266.7225 [av.middleatlantic.support@legrand.com](mailto:av.middleatlantic.support@legrand.com) CANADA 888.766.9770 [av.middleatlantic.support@legrand.com](mailto:av.middleatlantic.support@legrand.com)

©2024 Legrand AV Inc. 220005 96\_01193 Rev B 7/24 Middle Atlantic is a registered trademark of Legrand AV Inc. All other brand names or marks are used for identification purposes and are trademarks of their respective owners. All patents are protected under existing designations. Other patents pending.