



SNMP Web Manager

User Manual

Table of Contents

1.	Introduction.....	2
2.	SNMP Web Manager Install, Quick Start, and Uninstall.....	2
2.1.	Software Installation	3
2.2.	Software Quick Start	6
2.3.	Software Uninstall.....	6
3.	SNMP Web Manager GUI	7
3.1.	SNMP Device List	7
3.2.	Scan.....	7
3.3.	Add IP Address.....	8
3.4.	Delete IP Address	8
3.5.	Open web server page	8
3.6.	Reset.....	9
3.8.	Use system time	12
4.	SNMP Web Manager Function Menu.....	13
4.1	System.....	13
4.1.1	Login	13
4.1.2	Logout	13
4.1.3	Quit	13
4.2	Settings	14
4.2.1	Basic Info	14
4.2.2	IP Setting	14
4.2.3	Online upgrade	16
4.2.4	System manager	19
4.2.5	Static trap address	20
4.2.6	SMS Configuration.....	21
4.3	Language.....	25
4.4	Help	25

1. Introduction

Legrand SNMP Web Manager is a configuration wizard to search and configure all SNMP devices in the LAN. Software download available on www.legrand.us/upsdownloads

2. SNMP Web Manager Install, Quick Start, and Uninstall

Supported OS:

- Windows 2000
- Windows XP/2003/Vista/2008 (32-bit & x64-bit)
- Windows 7 (32-bit & x64-bit)
- Windows SBS 2011
- Linux RedHat 8, 9
- Linux RedHat Enterprise AS3, AS5, AS6 (32-bit)
- Linux RedHat Enterprise AS6 (64-bit)
- Linux RedHat Enterprise 5.2 (32-bit & 64-bit)
- Linux SUSE 10 (32-bit & 64-bit)
- Linux Cent OS 5.4 (32-bit)
- Linux Ubuntu 8.X, 9.X, 10.X (32-bit)
- Linux Ubuntu 10.X (64-bit)
- Linux Ubuntu 12.04 (32-bit & 64-bit)
- Linux Fedora 5
- Linux OpenSUSE 11.2 (32-bit & 64-bit)
- Linux Debian 5.x, 6.x (32-bit)
- Linux Debian 6.x (64-bit)
- Mac OS 10.6 (x64-bit)
- Mac OS 10.7 (x64-bit)
- Solaris 10 for x86

2.1. Software Installation

Step 1: Click install file, it will display the installation in process. Refer to the diagram 2-1.

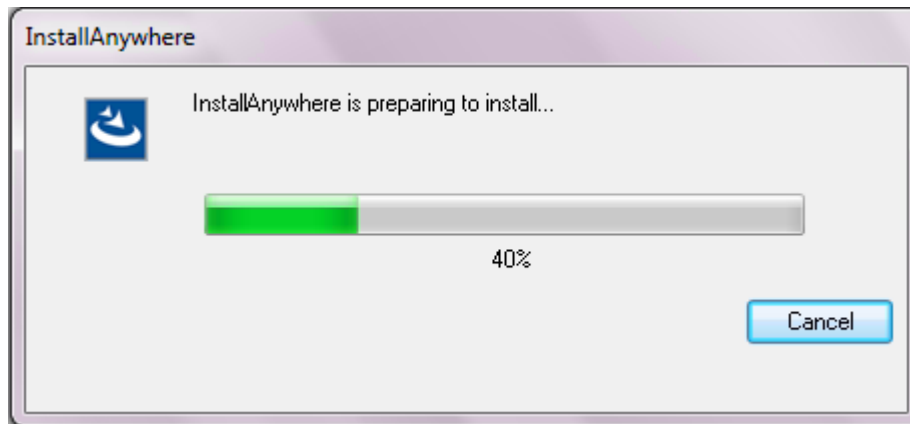


Diagram 2-1

Step 2: Click "Next" to proceed to the next screen as Diagram 2-2.

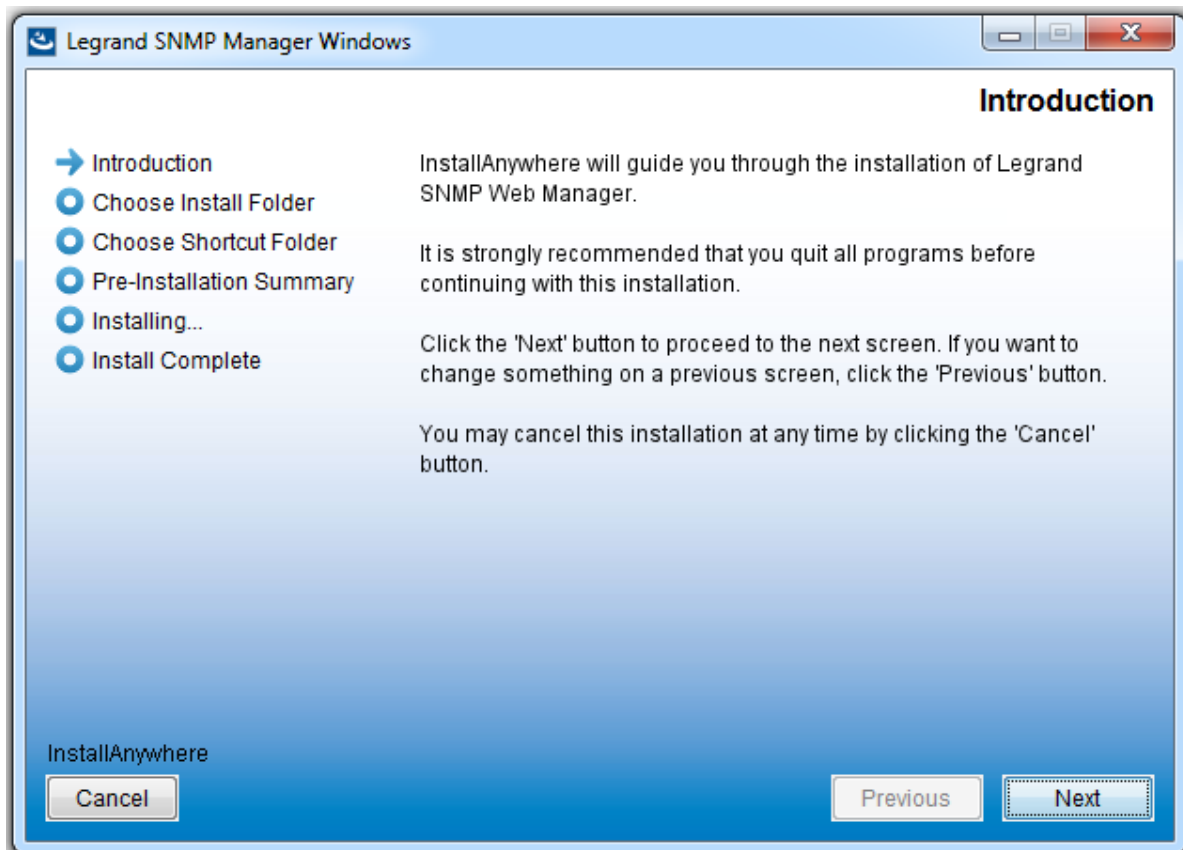


Diagram 2-2

Step 3: Select the "Choose" button to change the default installation folder. After choosing the installed folder, click "Next" button. Refer to the following diagram 2-3.

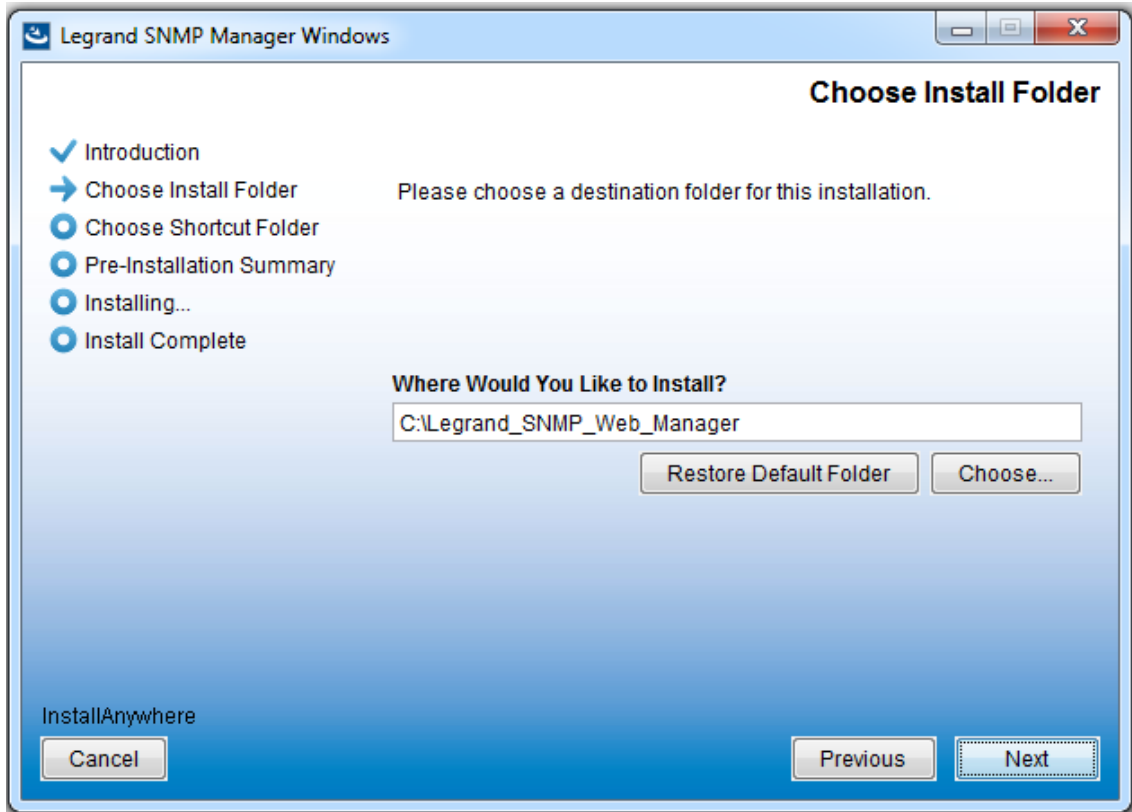


Diagram 2-3

Step 4: Choose the shortcut folder and click "Next" button. Refer to the following diagram 2-4.

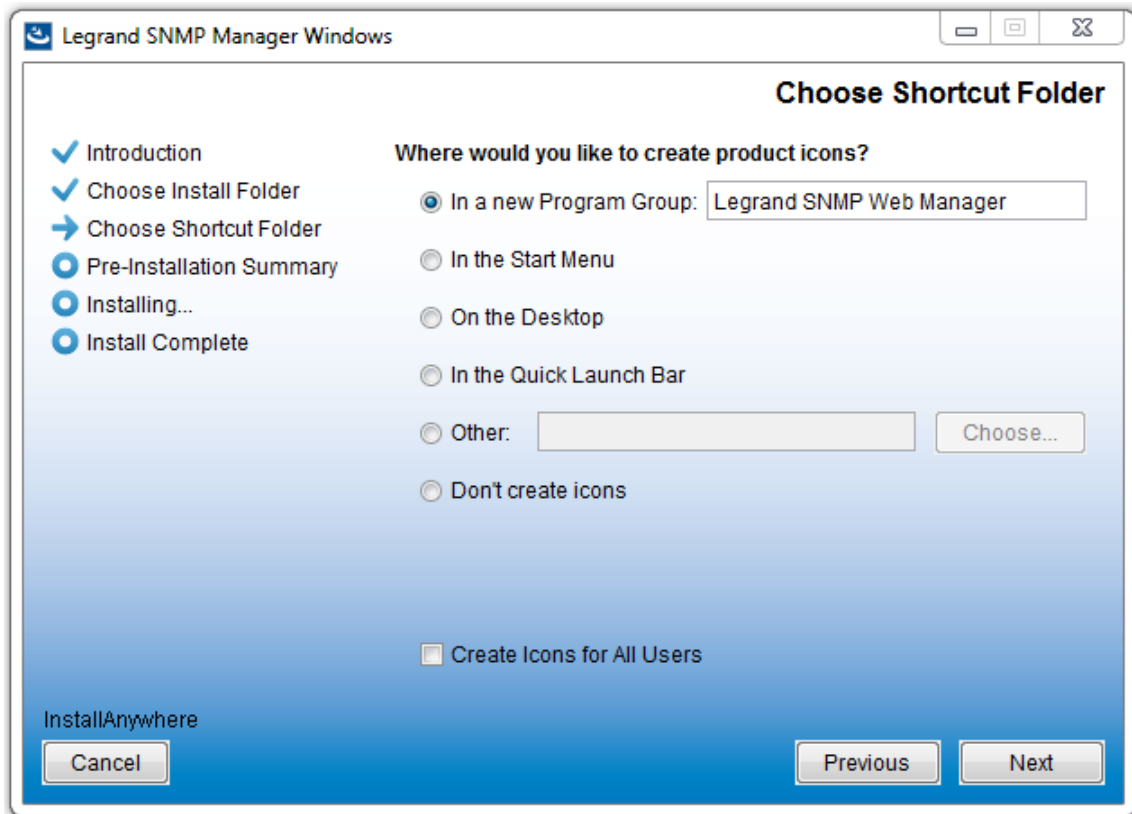


Diagram 2-4

Step 5: It will display the software summary before installation. Click the “Install” button to start the installation. Refer to Diagram 2-5.

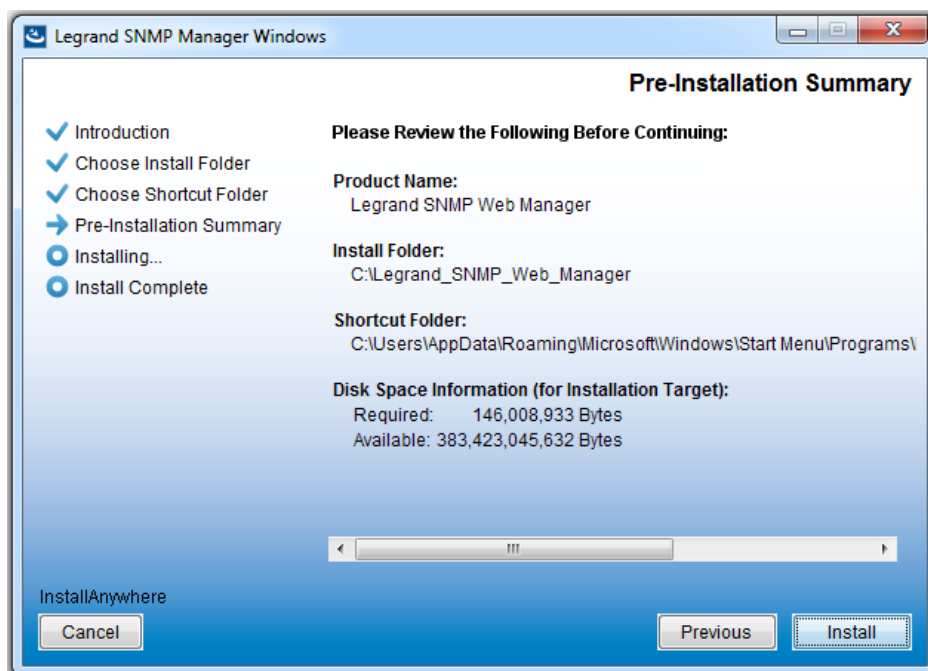


Diagram 2-5

Step 6: Click the “Done” button to confirm the installation.

Refer to Diagram 2-6.

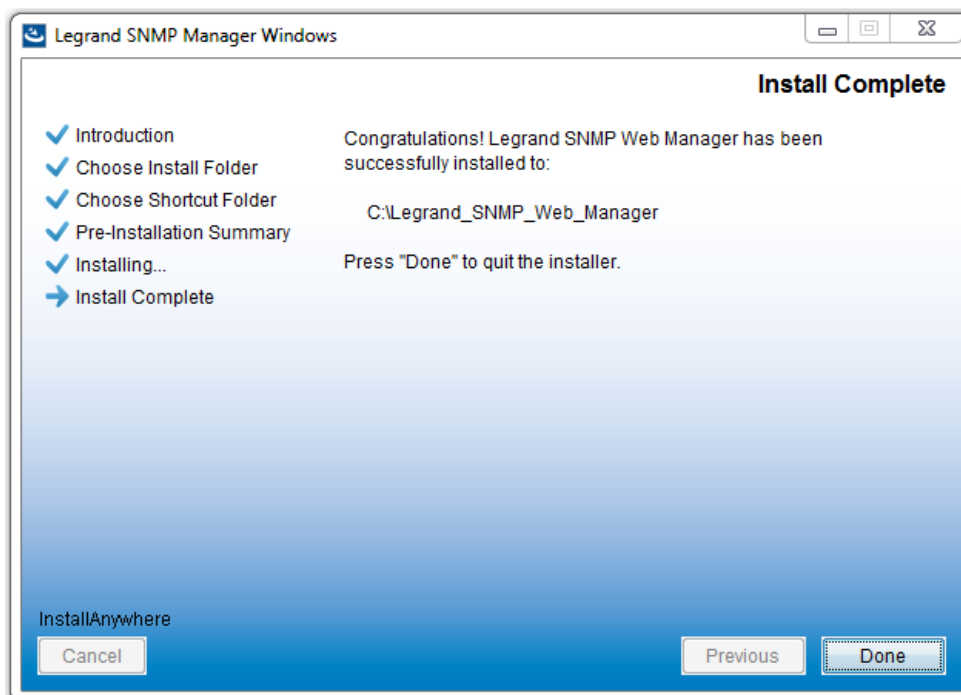


Diagram 2-6

Note: Please uninstall the previous version before installing a new version software.

2.2. Software Quick Start

The Installation Wizard will leave a **Legrand SNMP Web Manager** shortcut icon on your desktop. Click the shortcut to start the software.



Shortcut Icon

Alternatively, the program can be accessed via the Start Menu:

Start >> All Programs >> SNMP Web Manager >> SNMP Web Manager

2.3. Software Uninstall

Note: To uninstall the software, all programs must be closed, and you must be logged in as "Administrator."

Access the uninstall program via the Start Menu:

Start >> All Programs >> SNMP Web Manager >> Uninstall

Then follow the on-screen instruction to uninstall the software.

3. SNMP Web Manager GUI

The GUI has four sections, as marked in the illustration below:

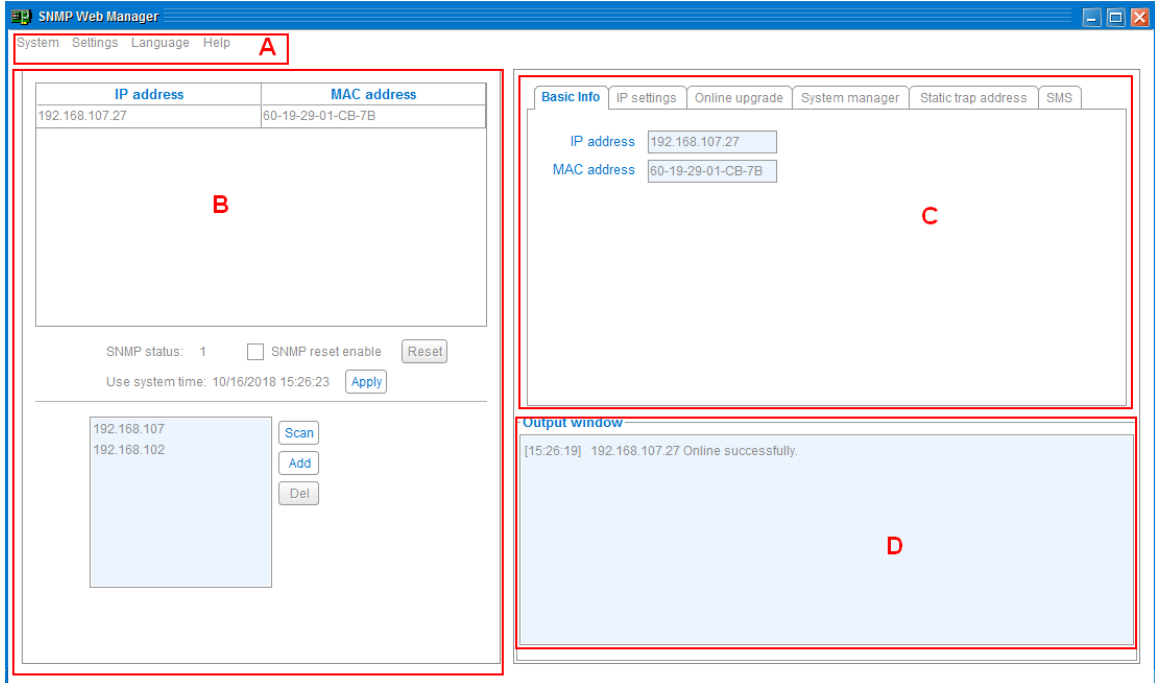


Diagram 3-1

A. Function menu offers a complete tool-set for navigating and setting the GUI.

B. SNMP device list will display all SNMP devices located in current IP address.

C. Configuration area includes IP settings, online upgrades, password management, and static trap address.

D. Output window displays all messages for operations

3.1. SNMP Device List

The default value in the window list would be the current PC IP address. For example, if the IP address of your current PC is "192.168.102.10", it will display "192.168.102" in device list when first enabling the SNMP Web Manager.

3.2. Scan

You may enter specific IP address and then click "Scan" button to search.

3.3. Add IP Address

Click the "Add" button. A window will pop up to enter the specific IP address. Then, click "Apply" to add IP address (Subnet). Refer to Diagram 3-2.

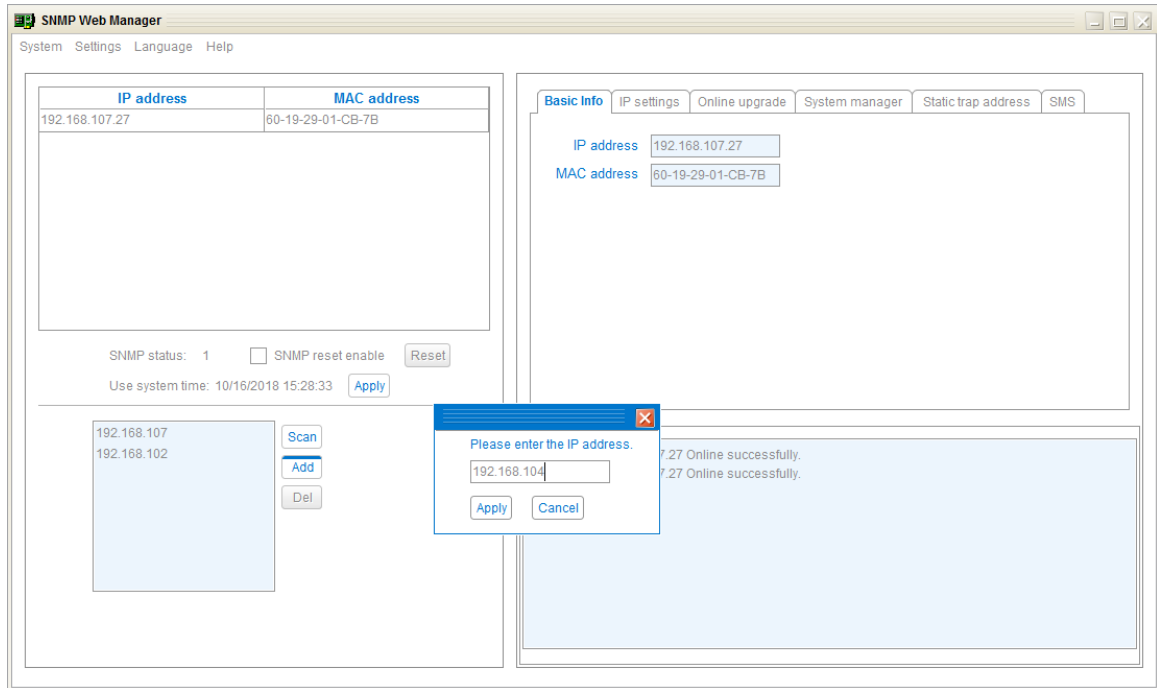


Diagram 3-2

3.4. Delete IP Address

Select unnecessary IP address from list and click "Del" to delete from list.

3.5. Open device web server page

Double click device list to open a specific device's web server page. Refer to Diagram 3-3.

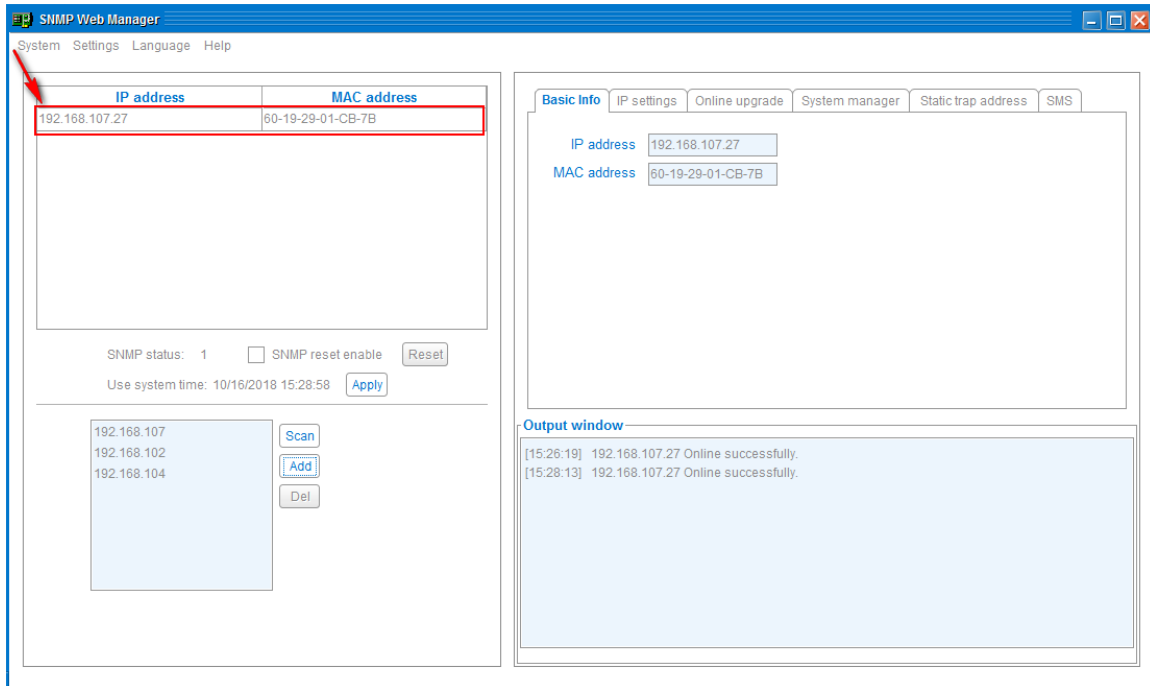


Diagram 3-3

This will open the SNMP web server page for that specific device address. Refer to Diagram 3-4.

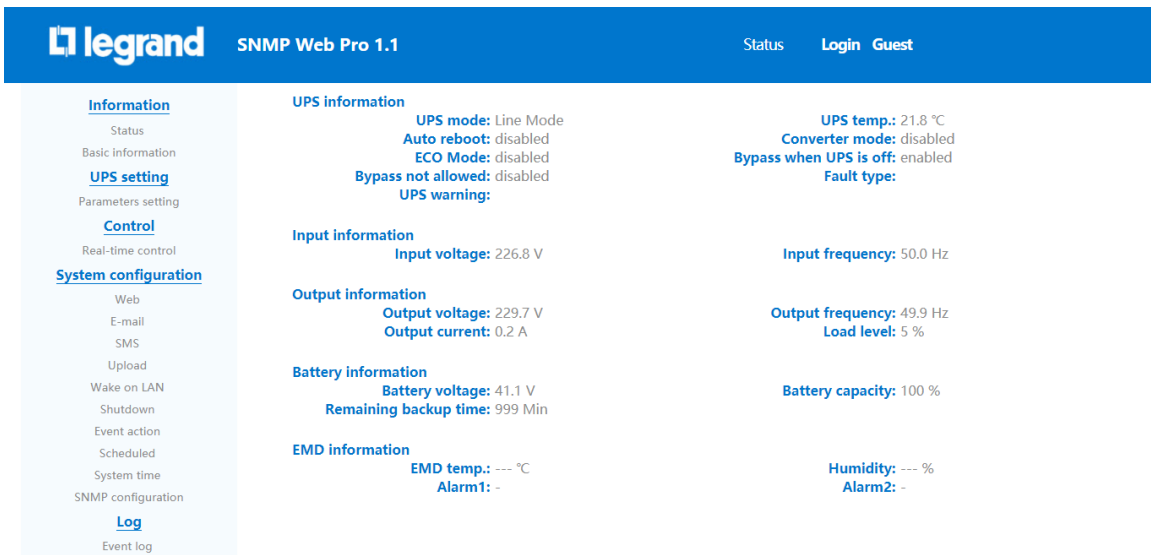


Diagram 3-4

3.6. Reset

To reset the IP address of a device, please select "SNMP reset enable" and click on the "Reset" button. After confirming the login, you can restart the device. Steps are as follows:

Step 1: Select IP address needed to restart from IP list. Refer to Diagram 3-6.

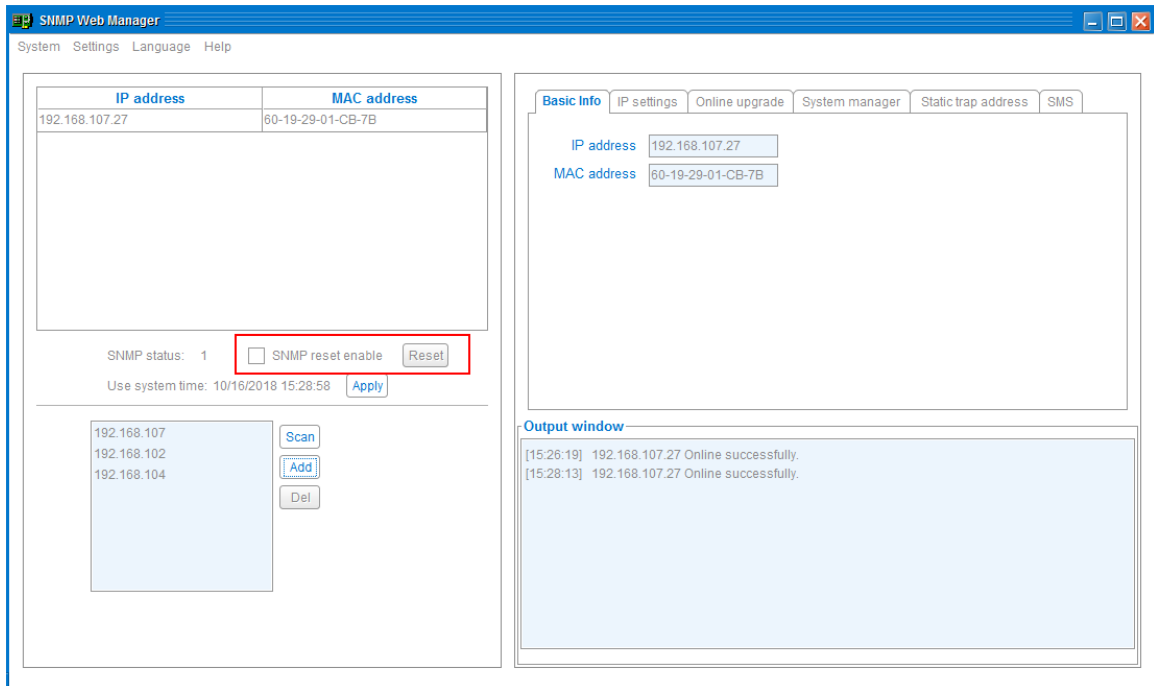


Diagram 3-6

Step 2: Click checkbox of "SNMP reset enable". Then, the "Reset" button will become available to click. Refer to Diagram 3-7.

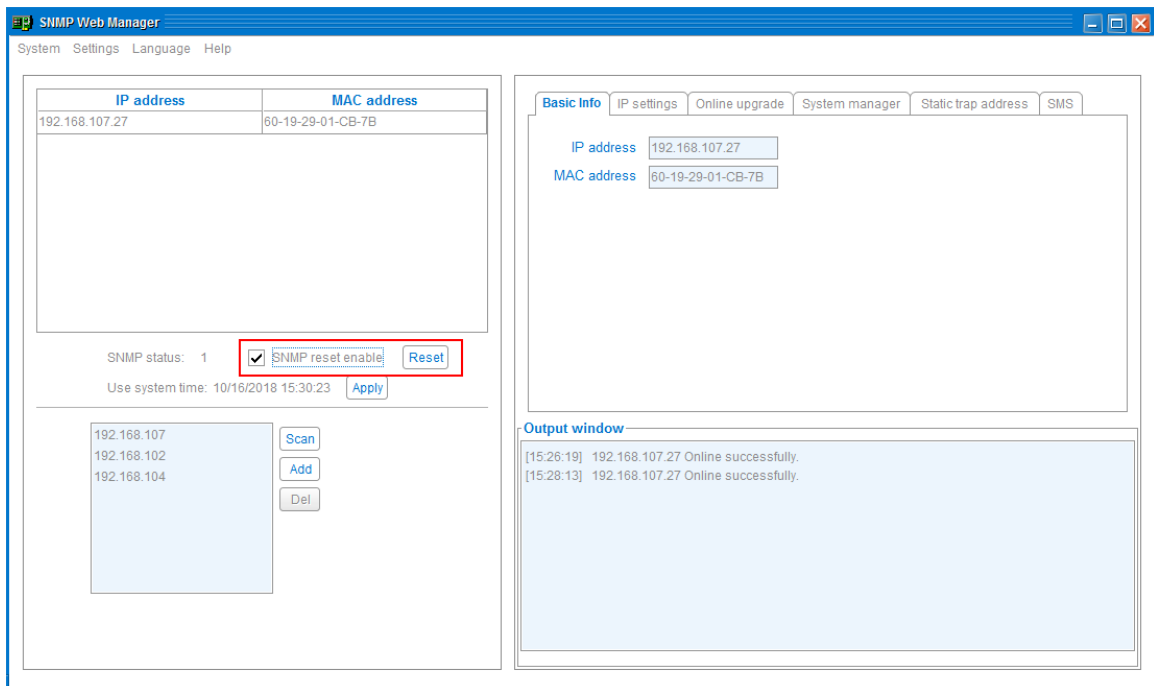


Diagram 3-7

Step 3: Click the "Reset" button to open confirmation box. Refer to Diagram 3-8.

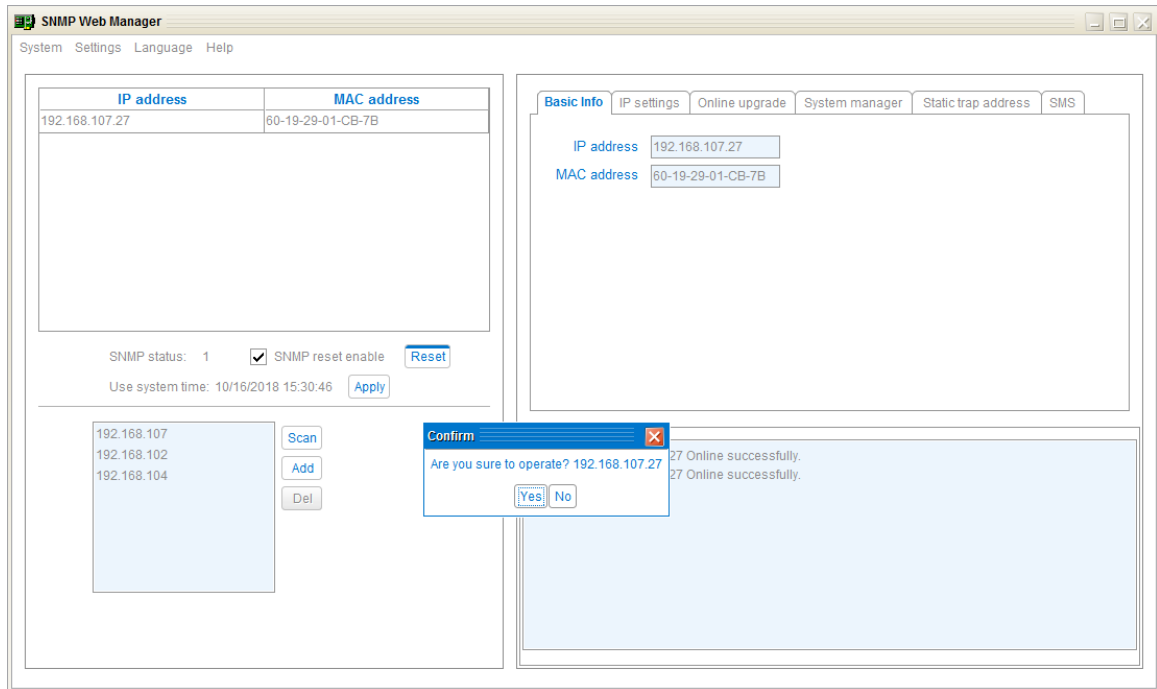


Diagram 3-8

Step4: Click "Yes." A login box will open. Refer to Diagram 3-9.

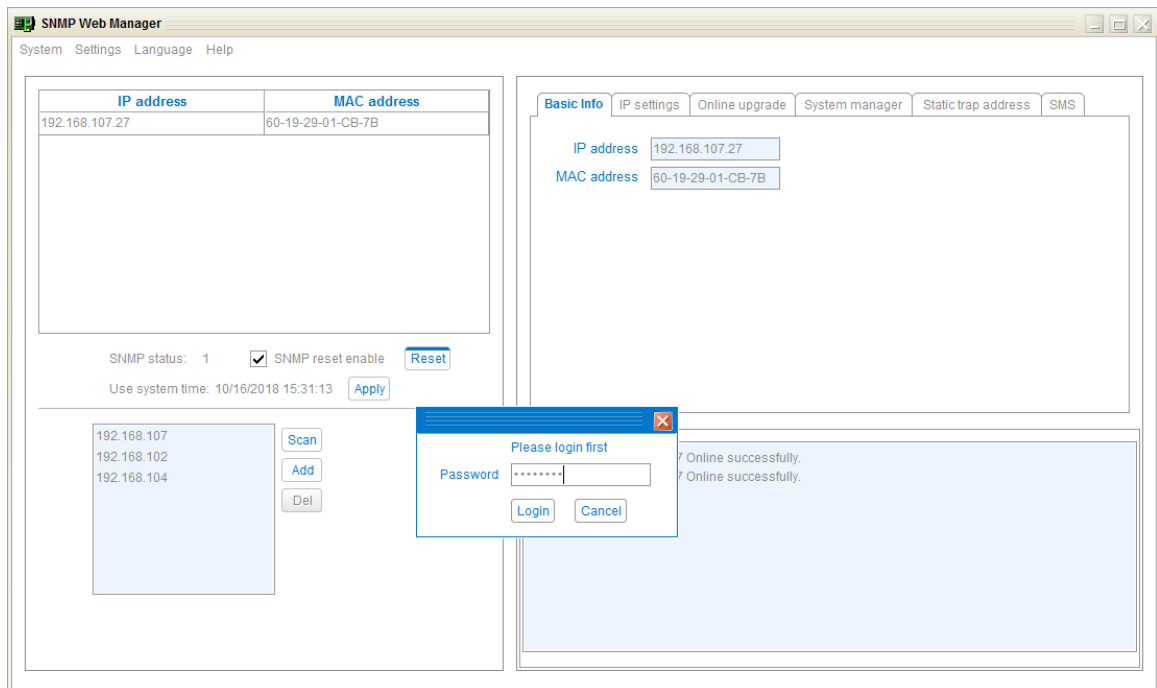


Diagram 3-9

Step5: Enter password and then click "Login" button. The selected device will be restarted.

NOTE: If changing MAC address of current device before reboot and current device is obtained by DHCP (Automatically obtain IP address), you need to click the "Scan" button to get the IP address after reboot.

3.7. Use system time

If you select "Use system time" then the SNMP card will use your PC system time. Refer to Diagram 3-10.

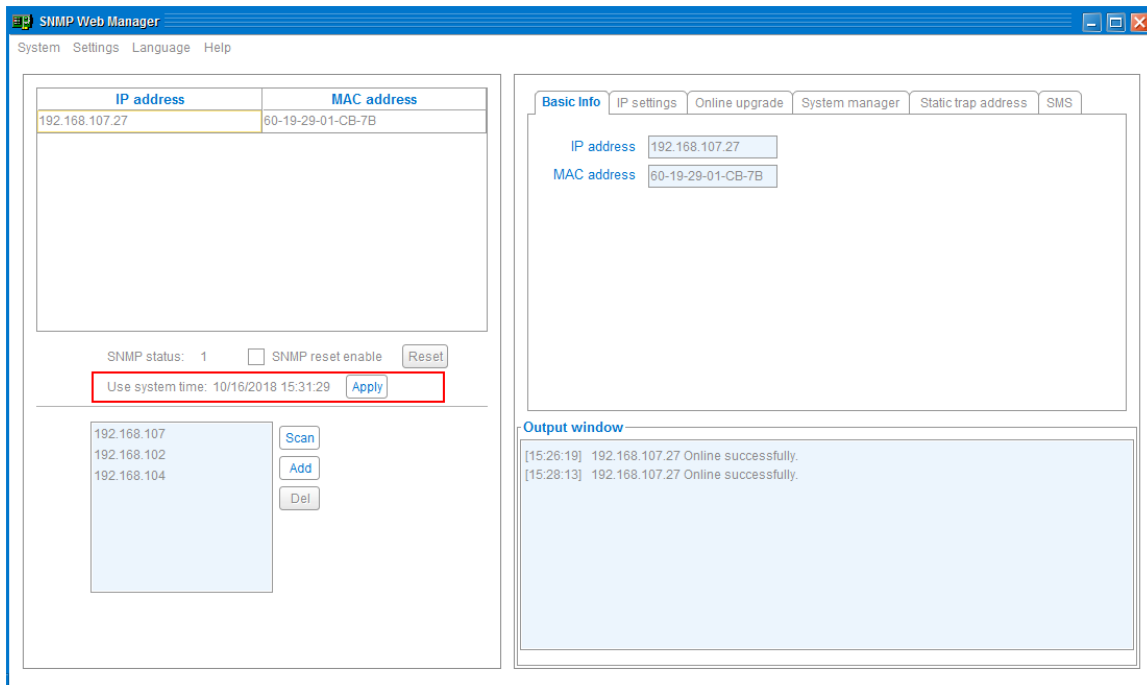


Diagram 3-10

4. SNMP Web Manager Function Menu

4.1 System

4.1.1 Login

When remotely logging in to access SNMP devices, it's necessary to verify ID.

Default Password: "12345678"

Step 1: Select: *System >> Login*

Step 2: Enter the default password and click "Login".

Refer to Diagram 4-1.

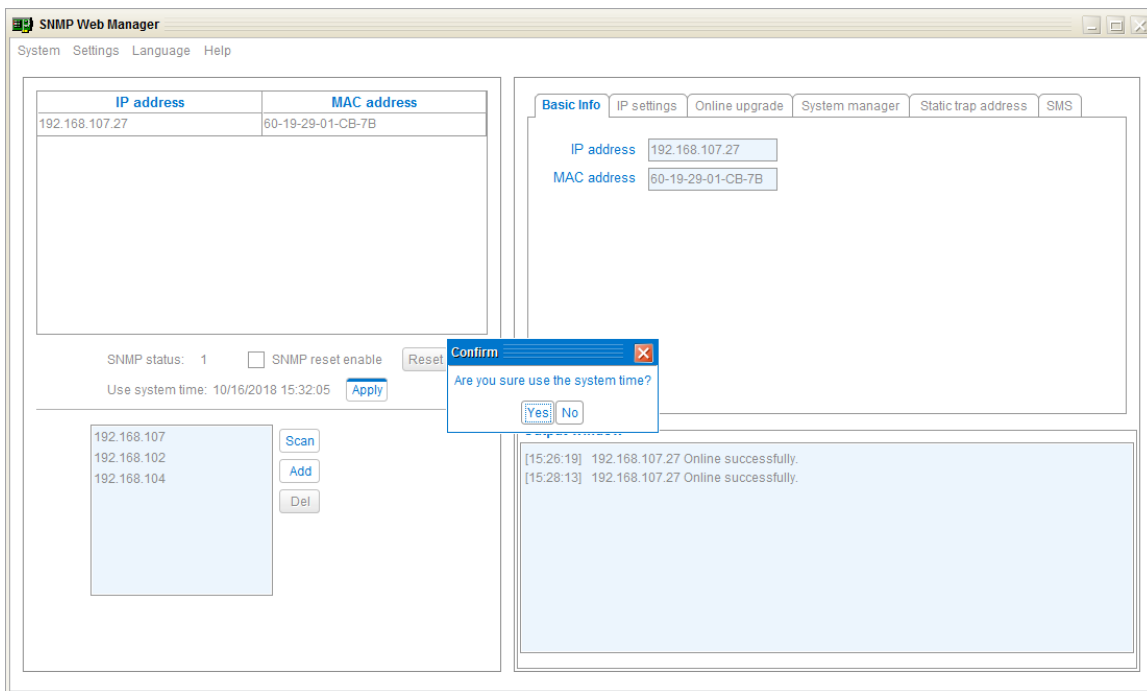


Diagram 4-1

4.1.2 Logout

Select: *System >> Logout*

4.1.3 Quit

Select: *System >> Quit*

4.2 Settings

4.2.1 Basic Info

The **Basic Info** tab displays a specific device's IP address and MAC address. Refer to Diagram 4-2.

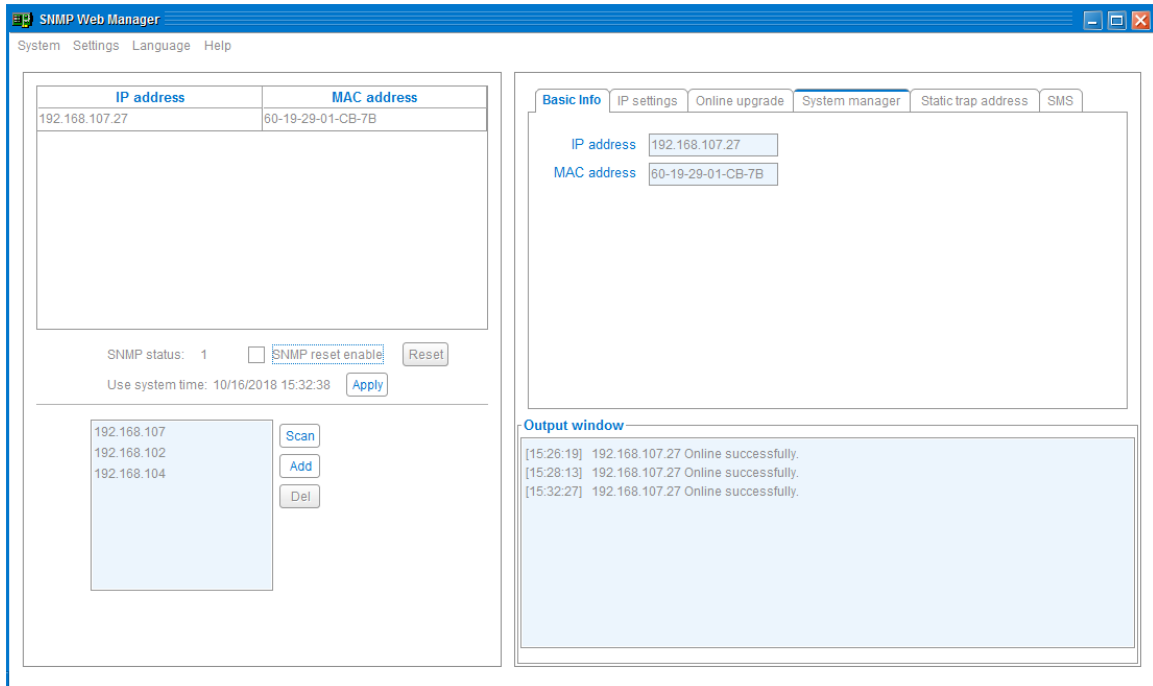


Diagram 4-2

4.2.2 IP Settings

The **IP Settings** tab allows you to obtain or configure an IP address.

The "MAC address" field displays the specific MAC address for the selected device.

Refer to Diagram 4-3.

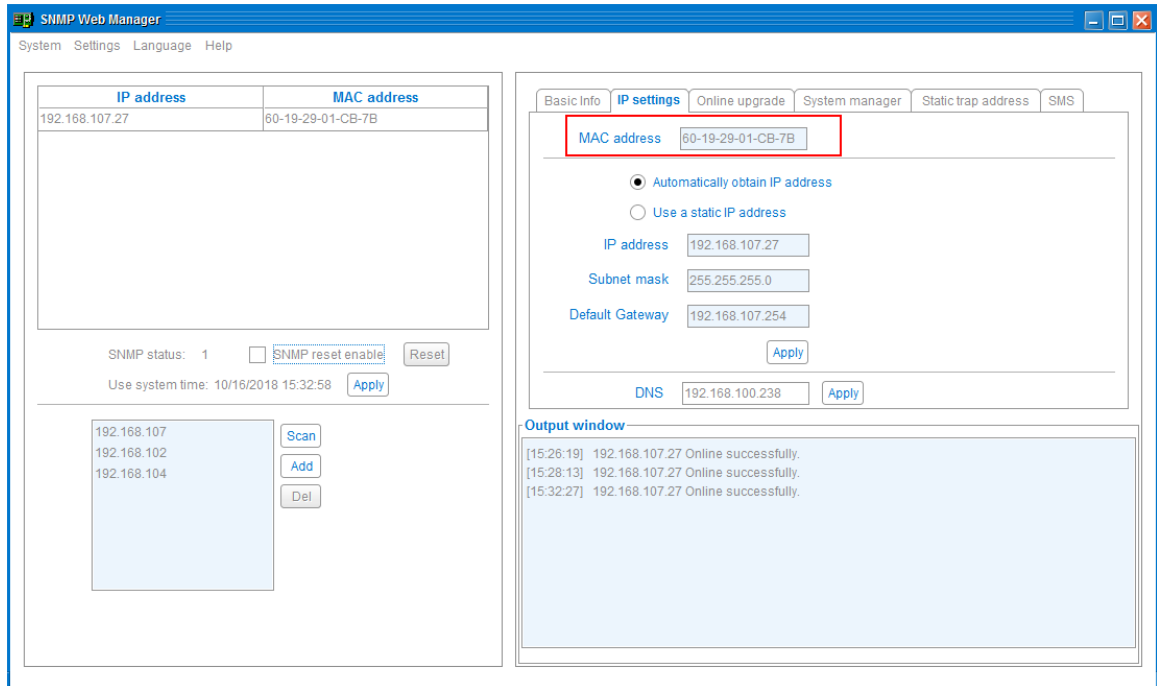


Diagram 4-3

There are two methods to obtain an **IP address**:

- Automatically obtain IP address (DHCP)
- Manually configure IP address

By default the system will automatically obtain IP addresses. If this is unavailable in the LAN, the default IP address will display as "192.168.102.230", Subnet mask as "255.255.255.0" and default gateway as "0.0.0.0". Refer to Diagram 4-4.

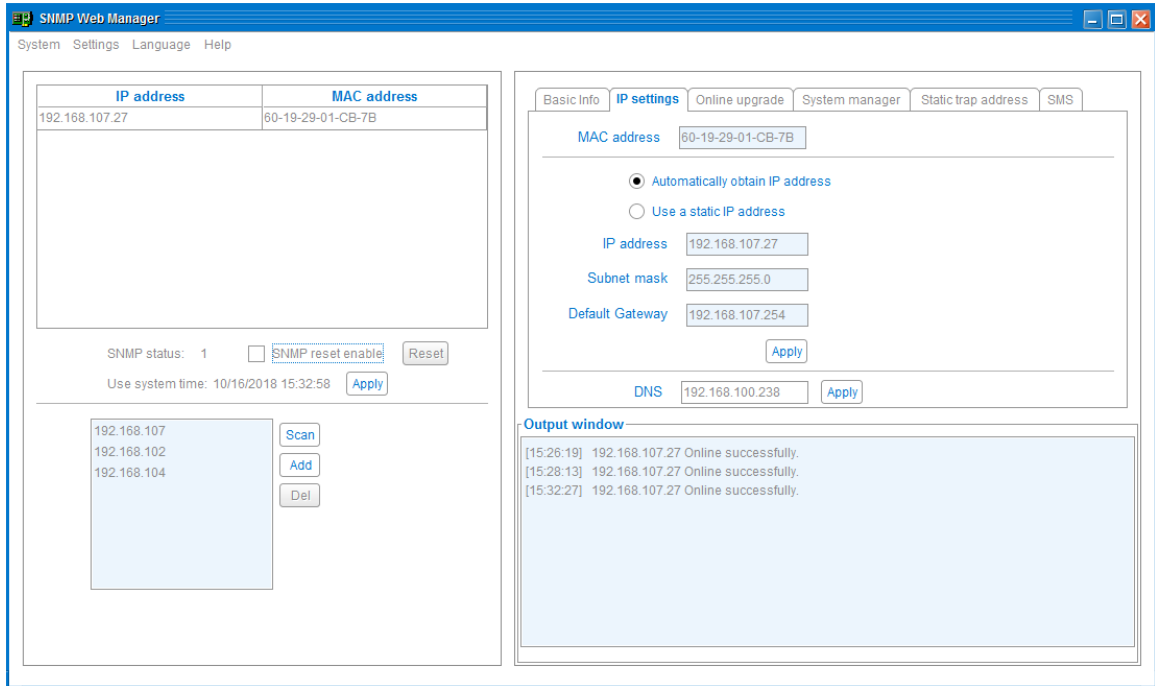


Diagram 4-4

DNS Setting:

Enter the DNS and then click "Apply". Refer to Diagram 4-5.

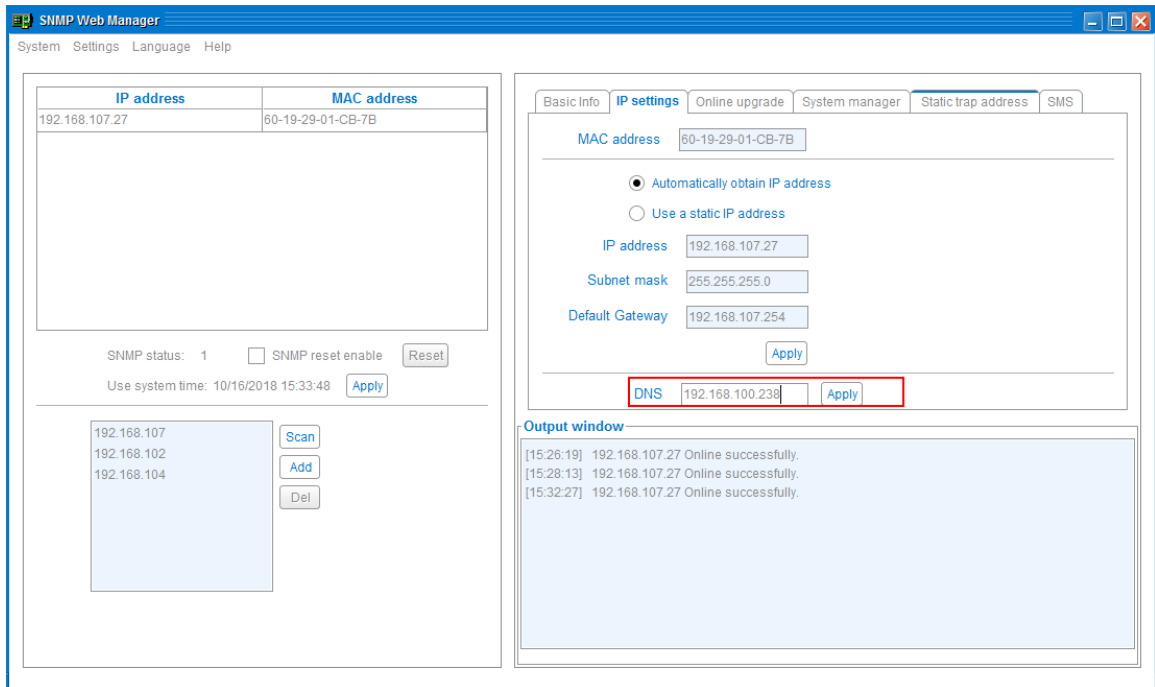


Diagram 4-5

4.2.3 Online upgrade

The **Online Upgrade** tab allows three methods to upgrade device firmware online:

- **Upgrade the selected devices** will upgrade all SNMP devices selected in device list.
- **Upgrade all un-upgraded devices** will only upgrade SNMP devices which are not using the

same version as current SNMP device is.

- **Force to upgrade all devices** will upgrade all devices to the latest version used in current SNMP device. Refer to Diagram 4-6.

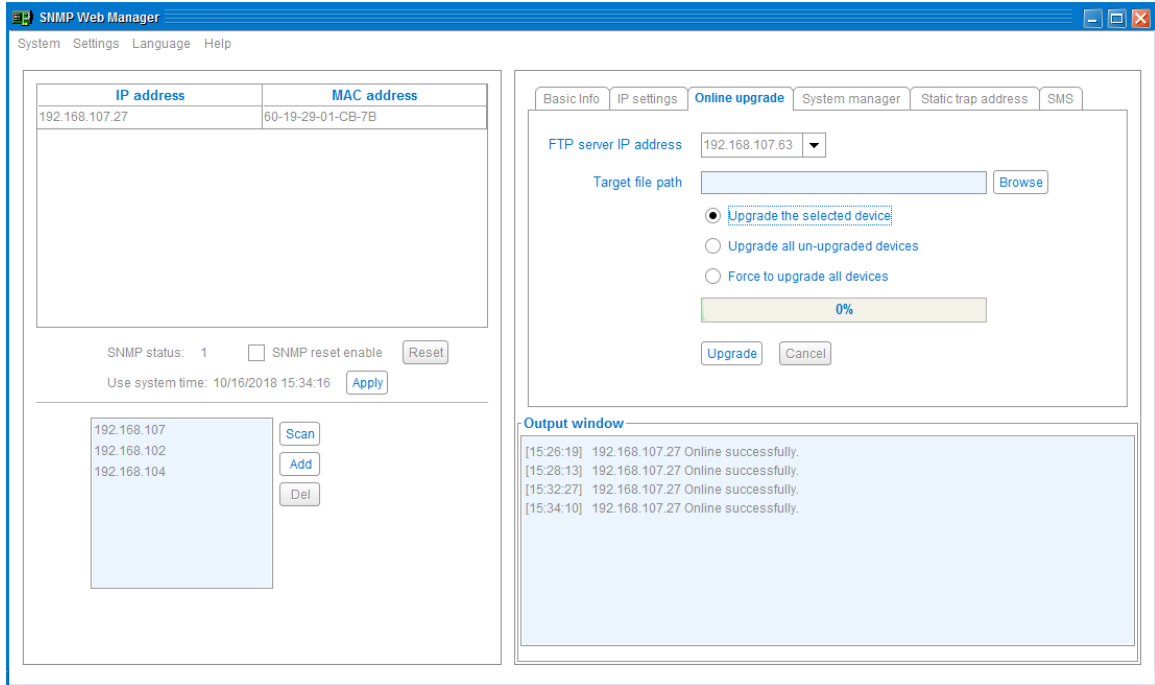


Diagram 4-6

Step 1: Select the FTP server IP address. Refer to Diagram 4-6.

NOTE: If applying an upgrade for an SNMP Web Server in LAN, the FTP server IP address will be the IP address of your current PC in LAN. If applying an upgrade for an SNMP Web Server in a specific network, the FTP server IP address will be the IP address of your current PC in Internet.

Step 2: Click "Browse" button to choose program file. Refer to Diagram 4-7.

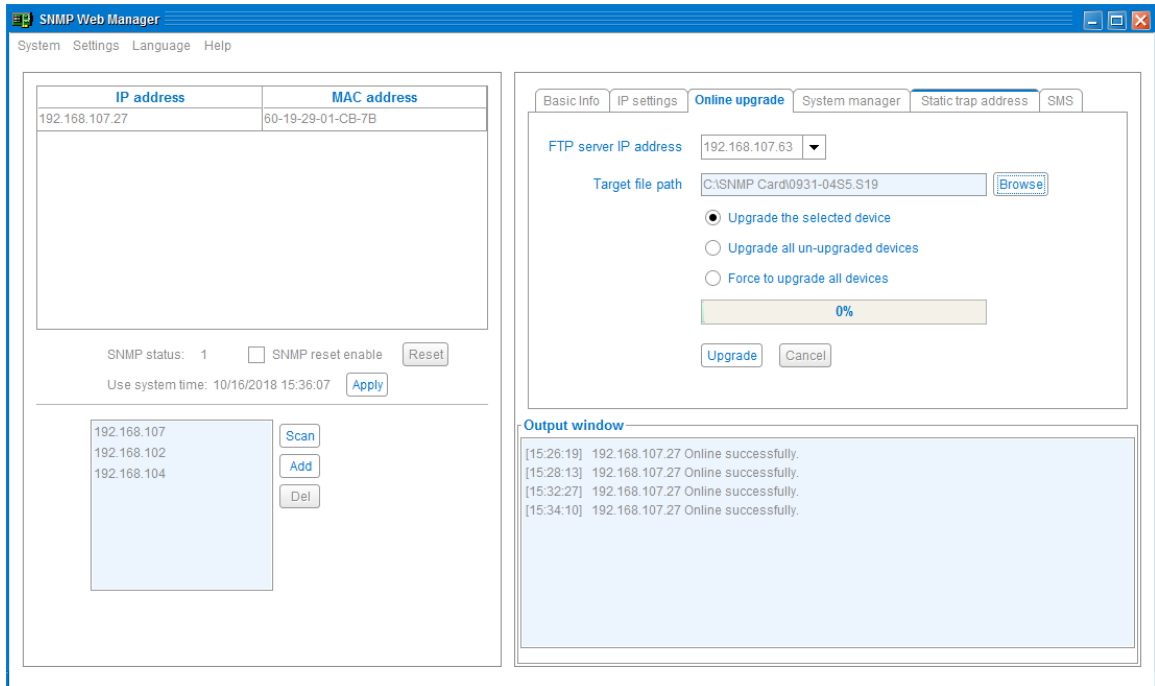


Diagram 4-7

Step 3: Click “Upgrade” to execute upgrade action. Refer to Diagram 4-8.

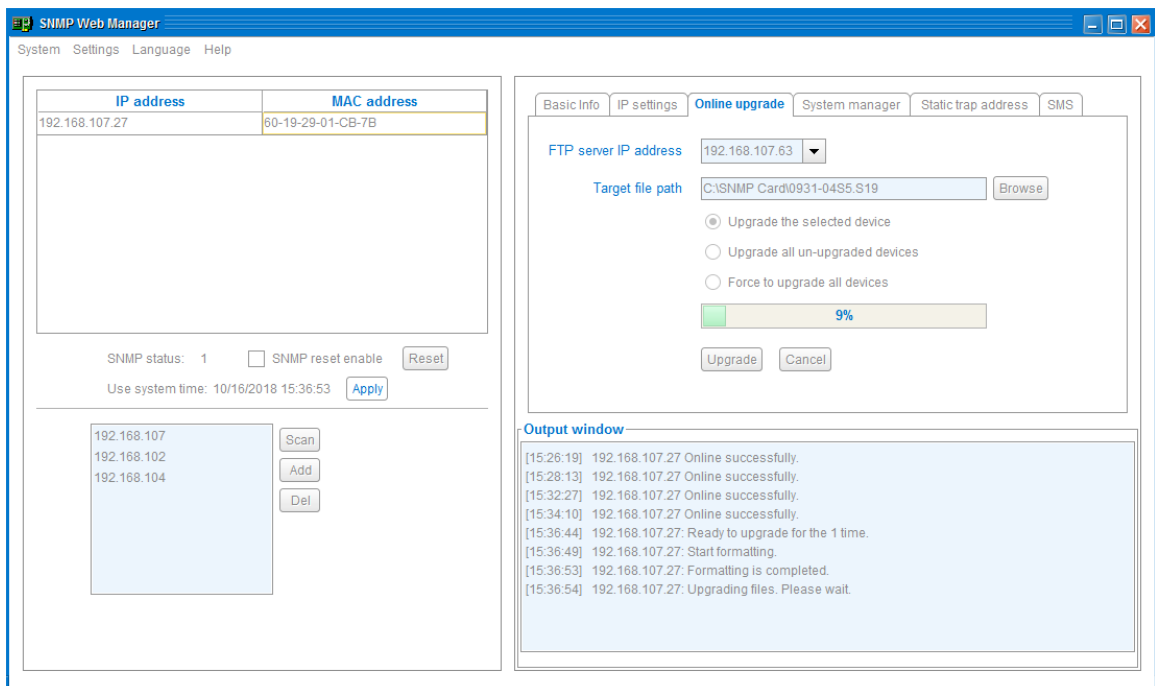


Diagram 4-8

Step 4: When the upgrade is complete, you will see a confirmation message in the Output Window.

Refer to Diagram 4-9.

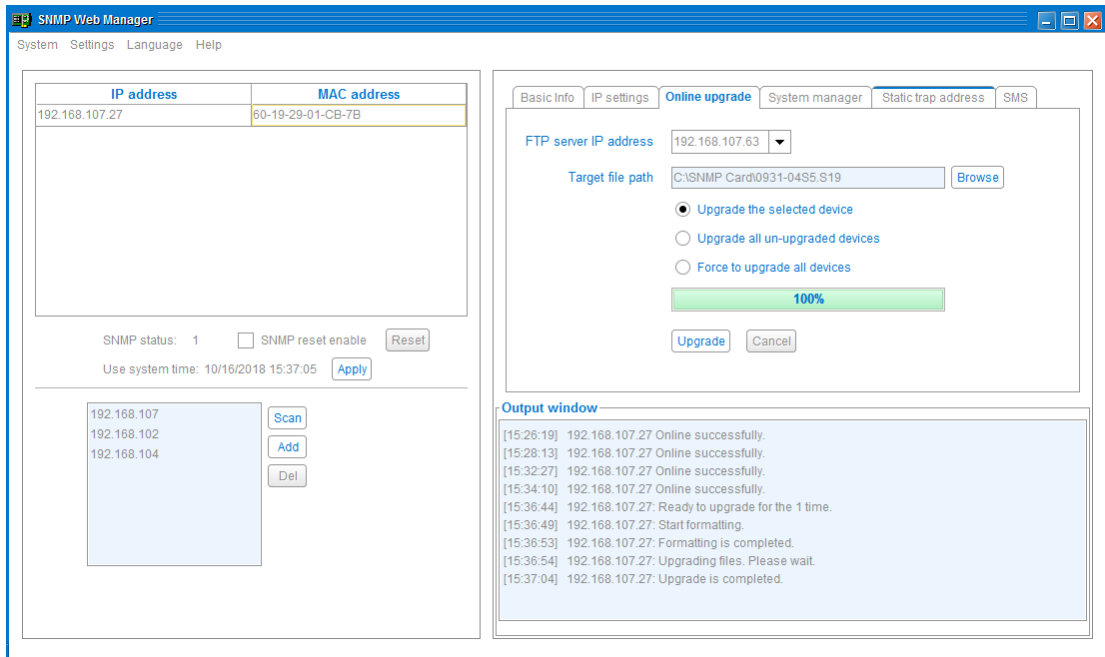


Diagram 4-9

NOTE: If an abnormal situation occurs during the upgrade process, the system will automatically restart the upgrade operation. If this interruption occurs five times, the system will automatically stop this operation. In the event of this occurrence, please check the status of your LAN.

4.2.4 System manager

The **System Manager** tab allows you to create a password for each device or for all SNMP devices. Refer to Diagram 4-10.

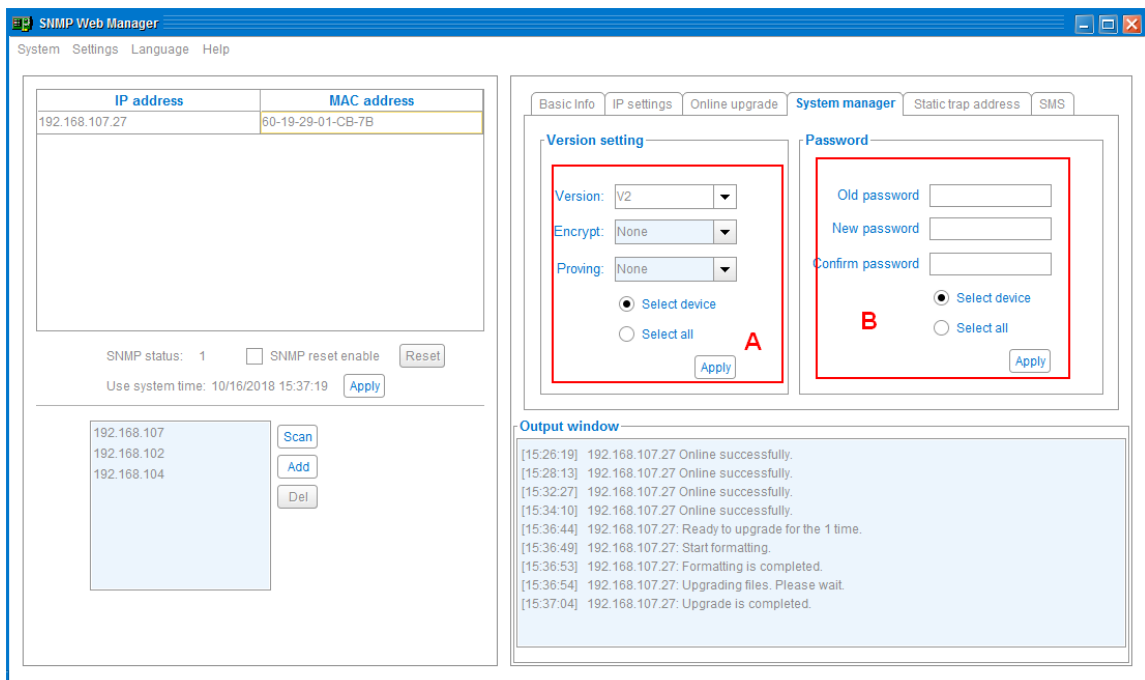


Diagram 4-10

A. Version setting:

You can set the SNMP protocol version. SNMP V3 protocol is also supported to monitor data.

- Select device: Choose to set SNMP protocol version only for selected SNMP devices in device list
- Select all: Choose to set SNMP protocol version for all SNMP devices on the device list.

Choose SNMP protocol version, the default is V2. If you choose V3, you should also set encrypt. Then, click "Apply" to apply the version setting.

B. Password:

You can modify a device password.

- Select device: Choose to change the password only for selected SNMP devices in device list
- Select all: Choose to change passwords for all SNMP devices on the device list

Enter the old password. Then enter the new password and re-enter to confirm. Then, click "Apply" to apply password change.

NOTE: The acceptable password length is 8-15 digits. If this password change is applied for all SNMP devices, all SNMP devices passwords must be consistent.

4.2.5 Static trap address

The **Static Trap Address** tab allows you to configure two static trap addresses and change the communication trap port. The default trap port is 162. Refer to Diagram 4-11.

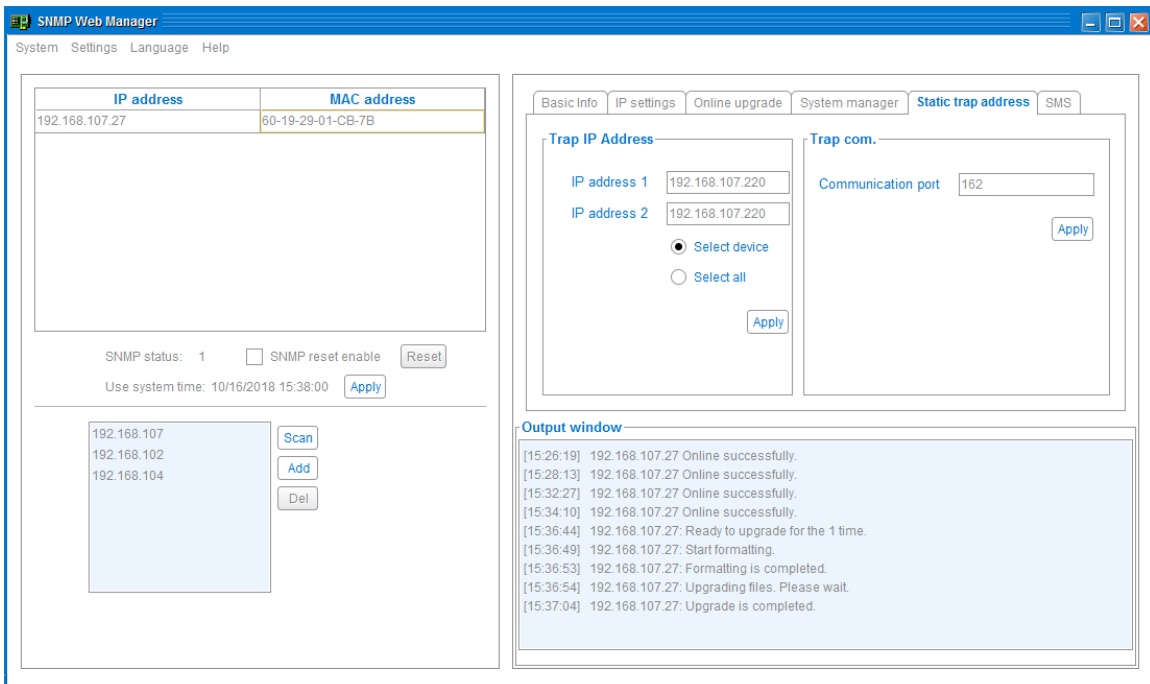


Diagram 4-11

NOTE: The SNMP device could provide 2 static trap addresses and 8 dynamic trap addresses. The SNMP device will automatically obtain IP address of host machine with installed monitoring software as dynamic trap address. If a dynamic trap address is inactive for over 10 minutes, the SNMP device will automatically release it and obtain a new dynamic trap address.

4.2.6 SMS Configuration

The **SMS** tab allows you to test the alert function of the SNMP card via text message.

Step 1 Select SMS. Refer to Diagram 4-12.

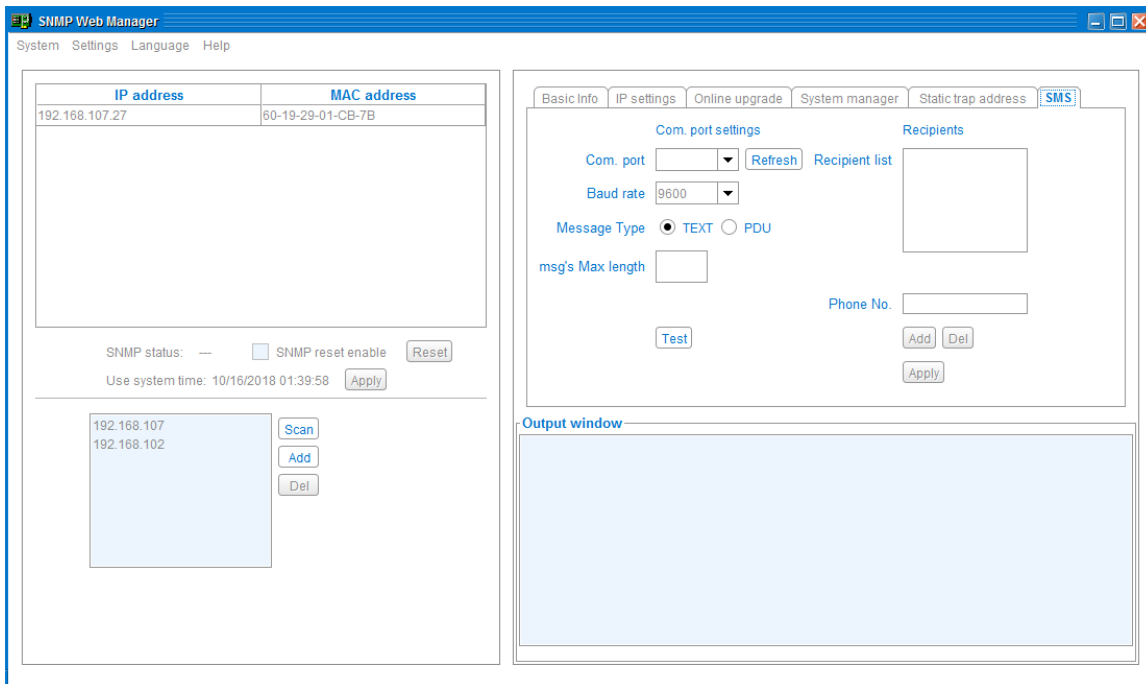


Diagram 4-12

Step 2 Select communication port and baud rate.

Step 3 Enter mobile phone number in "Phone No." column and click "Add" to add a phone number to the Recipient List. To delete numbers, simply select the phone number from the Recipient List and click "Del".

Step 4 Click "Apply" to save all changes. The "Test" button can be used to send a test SMS to confirm the correct setting in GSM modem. If all parameters are set up correctly, system will send a test message to all recipients and show a successful message. (Refer to

Diagram 4-13) Otherwise, a failure dialog will pop-up to indicate that there is an error in the parameter settings. (Refer to Diagram 4-14)

NOTE: This SMS setting is for testing purposes only. Be sure to enter all SMS alert settings in the individual SNMP device. This can be achieved using the SNMP Web Pro GUI or the ViewPower Pro software. For additional details, please check the **SMS** section of the SNMP Web Pro manual or the **SMS Configuration** section of the ViewPower Pro manual.

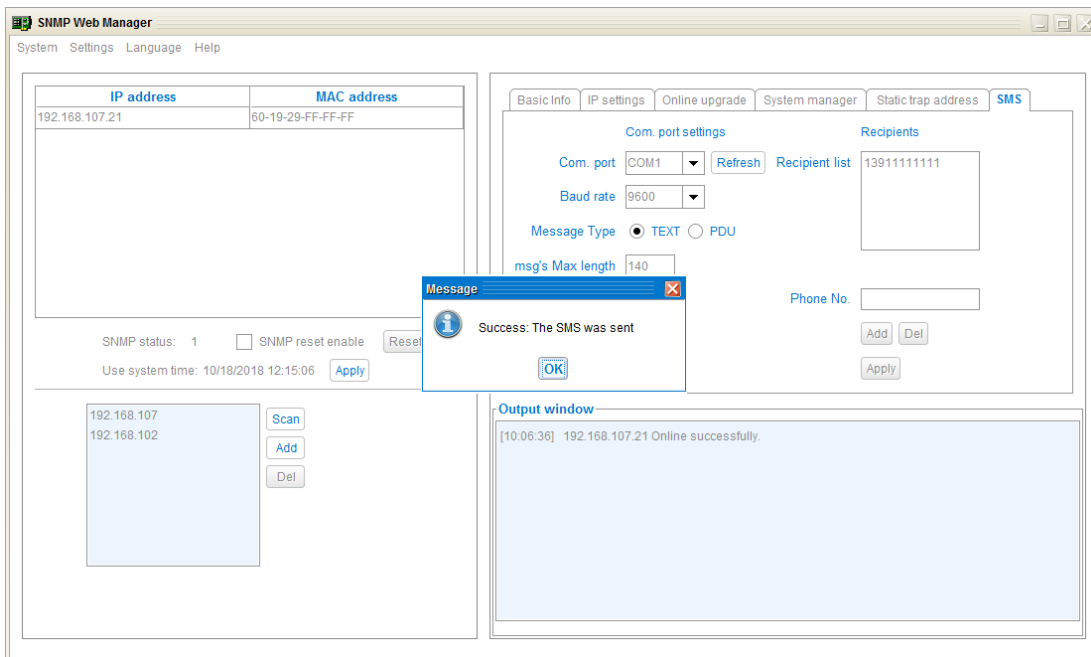


Diagram 4-13

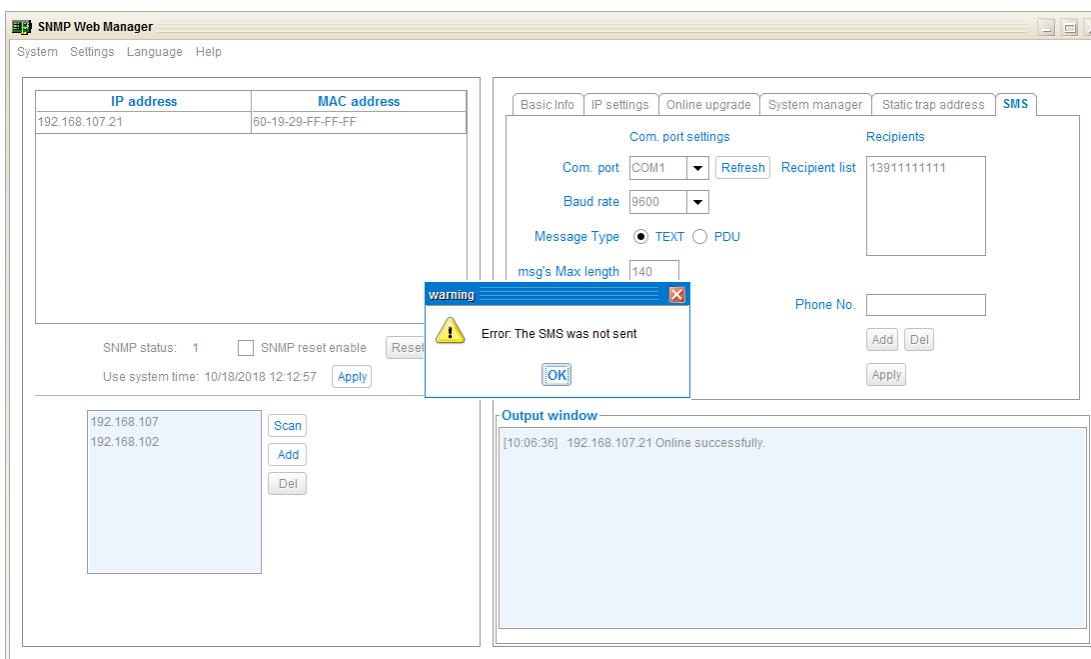


Diagram 4-14

Step 5 Click on a specific SNMP device in the device list to open the SNMP Web Pro. Select “Event action” in the menu. Click checkbox of “Send SMS while any UPS's event occurs”. Please refer to Diagram 4-15.

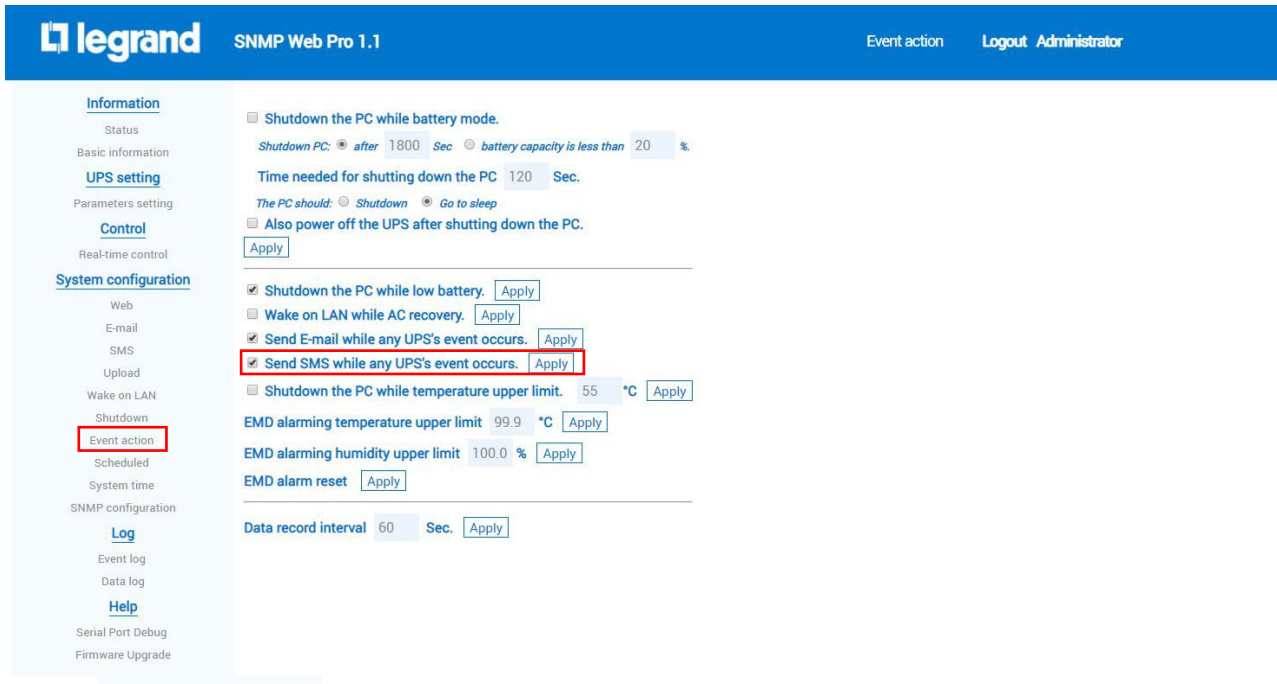


Diagram 4-15

Step 6 Then, select “SMS” in the menu and configure the settings as follows. Refer to Diagram 4-16.

- A) Enter IP address of the server with SNMP Web Manager installed.
- B) Set up SMS receiver port from SNMP Web Manager: 41222
- C) Set up user name of SNMP card as root.
- D) Enter password to access SNMP card. It’s the same password that was set in the SNMP Web Pro.
- E) Enter the mobile phone numbers to receive SMS.

After all steps are complete, click “Apply” to confirm the modifications. You may click “Test” to perform a test SMS. At this time, if any event occurs on the UPS, the SNMP card will send a short message through the COM port setting in SNMP Web Manager to all receivers listed in Area E in Diagram 4-16.

legrand SNMP Web Pro 1.1 SMS Login Guest

Information

Status

Basic information

UPS setting

Parameters setting

Control

Real-time control

System configuration

Web

E-mail

SMS

Upload

Wake on LAN

Shutdown

Event action

Scheduled

System time

SNMP configuration

Log

Event log

Data log

Help

Serial Port Debug

Firmware Upgrade

Send SMS By: Server Serial Port

SMS maximum length: 100

SMS server: 192.168.102.230 **A**

Port: 41222 **B**

Account name: **D**

Password: **C**

Note1: After apply, you can click "Test" button to send a test message.

Note2: If send SMS by serial port, EMD for **D** on will be disabled.

Receive 1:	<input type="text"/>	<input type="button" value="Apply"/>	<input type="button" value="Delete"/>
Receive 2:	<input type="text"/>	<input type="button" value="Apply"/>	<input type="button" value="Delete"/>
Receive 3:	<input type="text"/>	<input type="button" value="Apply"/>	<input type="button" value="Delete"/>
Receive 4:	<input type="text"/>	<input type="button" value="Apply"/>	<input type="button" value="Delete"/>
Receive 5:	<input type="text"/>	<input type="button" value="Apply"/>	<input type="button" value="Delete"/>
Receive 6:	<input type="text"/>	<input type="button" value="Apply"/>	<input type="button" value="Delete"/>
Receive 7:	<input type="text"/>	<input type="button" value="Apply"/>	<input type="button" value="Delete"/>
Receive 8:	<input type="text"/>	<input type="button" value="Apply"/>	<input type="button" value="Delete"/>

E

Diagram 4-16

NOTE: It's required to plug-in GSM Modem if sending SMS to mobile phone.

4.3 Language

SNMP Web Manager offers 12 languages:

- ✓ English
- ✓ French
- ✓ Chinese(Simplified)
- ✓ Chinese(Traditional)
- ✓ German
- ✓ Italian
- ✓ Polish
- ✓ Portuguese
- ✓ Russian
- ✓ Spanish
- ✓ Turkish
- ✓ Ukrainian

The default language setting is English.

4.4 Help

- **About:** Click "Help" menu and select "About" item. It represents the copyright information about software
- **Help:** Click "Help" menu and select "System help" item. It will open the user-manual. Before operating software, please read manual carefully.