

Repeatable **Success**

MASS DEPLOYMENT FOR CONFERENCING SPACES

MASS Deployment



x100



STRATEGICALLY DEPLOY AV SYSTEMS

Businesses are learning that the demand for video conferencing spaces has risen dramatically in the hybrid workforce era. To meet the increasing need for video conferencing spaces that unite in-office and remote employees, knowing how to quickly roll out video conferencing systems is vital.

Strategically deployed AV systems create spaces that put people first and encourage collaboration. Repeating that success across an enterprise leverages time and cost savings while simultaneously generating familiarity and cohesion for end users. The brands of Legrand | AV are uniquely positioned to help businesses and organizations develop a new hybrid mindset and culture of belonging.

That's why Legrand | AV has designed easily deployable conferencing solutions that result in better collaboration – helping employees be seen and be heard, no matter where they're working.



Key Mass Deployment Components of Legrand | AV Solutions



Time and Cost Savings

One thing you can't make more of is time. Solutions that save time are worth every penny because they save dollars in installation and maintenance costs. Some solutions can add displays or projection capabilities without the need for site inspection and precise measurements. PTZ cameras that use PoE+ power can be placed where you want them without having to hire and schedule an electrician. Multiply the impact of that time and cost reduction across a rollout and you'll start to appreciate the benefits.



Expert Planning

Legrand | AV's Solutions Engineering team is ready to assist with system designs that you can rely on to work across hundreds of conferencing spaces. This is a free service provided to our partners that gives access to the product expertise we bring to the table. Still want to do it yourself? We have pre-configured AV series racks, the 3D design tool for racks, MountFinder®, Screen Designer, ConnectXpress™, the Luxul Customer Assurance Program which is a free design service that guarantees wireless network coverage in spaces of all sizes, and many more online tools to help get you on the way to specifying conferencing systems.



Installer Friendly

Keep projects on-track with installer-friendly designs. Many Legrand | AV solutions are designed to be installed in stages to match the real-world timing of an installation in new construction environments. We also engineer AV solutions that limit the number of installers needed – even down to keeping pieces under a certain weight limit for safety. Installers know Legrand | AV brands and are well equipped to efficiently set up systems that provide an intuitive experience for the end user.



Ease of Use

Consider conferencing equipment that only requires one USB connection to the presenter's laptop. No tedious driver installation needed. With the right setup, employees can work across whatever conferencing platform a company prefers while also providing the flexibility to work with another company's platform of choice. Enjoy the value of conferencing solutions that end users don't need to think about – they just work.



Ease of Service and Maintenance

Time savings becomes exponential when you factor in the ability to program repeatable configurations across an organization, update all camera firmware at once, and load storage solutions off site before deployment. Remote management for network, video conferencing, and power systems dramatically cuts down the need to be on site to solve problems, while display mounts can extend from the wall for easy access, and projector mounts feature quick connect and disconnect with convenient lamp and filter access without losing registration.



Pre-Install

Racks and storage solutions can be configured off site in a centralized location to save time and add standardization and bench testing opportunities. Proximity™ in-wall boxes can be pre-installed at the site while the gear is secured to the LeverLock™ system off site to be deployed when construction is finished. Frame to Furniture solutions allow you to configure the rack-mounted gear and later add the custom finished panels. We can even provide cables at the precise length needed for the installation.



Kitting

Want to save time sorting and assigning cables to each room and order cables in kits at the room level? Yes, please! We even send each room's kit in one box to save time unboxing individual cables.



Packaging

We're so into helping installers at any phase of the process, we've even designed how solutions are packed in the box. Superior out-of-box experiences mean access to the part you need when you need it with minimal waste.



Listings & Ratings

Legrand | AV solutions are tested to meet a variety of standards. Look for UL-listing, TAA compliance, environmental documentation for LEED, warranties, ADA compliance, OSHPD, and many more certifications.



Display Mounts

There's a reason our brands employ design thinking with everything we do. We gather user feedback to research and design display mounts that save time and help with every part of the installation. Here are our mass deployment heavy hitters in the display mount category.



Middle Atlantic Forum™ Collaboration Suite

This meticulously designed system had one overriding goal – make hybrid conferencing work. Sound absorption material mitigates problematic acoustic environments for a better user experience. Easy access to storage keeps equipment right where it's used. Even the tables were designed to enhance the experience and come in shapes that keep everyone in view, using surfaces that act as a bounce light for better fill.



Carts

Chief and Middle Atlantic carts provide video conferencing on the go. A fully contained conferencing system can be deployed to any room and enhance meetings that would otherwise be held on laptops.



Chief Tempo™ Flat Panel Floor Support System

Eliminate the need for wall inspections and room remediation across a large rollout that includes different buildings or regions, when the floor is used to support displays, and equipment is stored right where it's needed for ease of service. The uprights can move to accommodate outlet location while still placing the display right where you want it, the bottom panel can be customized to match the surrounding décor or to reinforce the brand aesthetic.



Chief Fusion Wall Mounts

The mount that every installer is glad to see. Fusion® mounts allow post-installation fine-tuning of height and leveling, centerless lateral shift for perfect positioning, Centris tilt to eliminate glare, and Click-Connect to ensure the display is safely secured to the mount. A host of other touches like teardrop design with lag bolts and magnetized pull cord tabs speed up installation. Even the finishing hardware is in a box you can hang from the mount, ready and available when it's time to install the displays.



Time Tip!

Add a Chief pull-out accessory to the Fusion wall mount and you won't need two people holding the display while a third connects all the cables. It also provides ample access to storage and connectivity for servicing.

Projection Screens

For larger conferencing spaces that have 10 or more people, big visual solutions ensure everyone in the room can see the content. Da-Lite offers screens ideal for large scale rollouts with easy to install solutions that accommodate a variety of room challenges.



Da-Lite Tensioned Advantage® and Advantage with SightLine™

Eliminate the need for to calculate drop distance when ordering with Da-Lite's aircraft-grade cable drop screen feature, SightLine. The single roller suspension system replaces the need for black drop above a screen with a flexible drop distance up to 70", making the specifying and ordering process a snap. The low-profile design honors the space's architectural integrity while opening up the space above the screen for cameras or speakers.



Da-Lite IDEA Screen

What makes IDEA™ screens stand out is their projection-quality surface that can also be used as a touch screen when paired with an interactive projector, and it's a magnetic whiteboard that can be written on with dry-erase markers. They're easy to install, and maintain their rigidly flat surface, cutting down time otherwise spent trying to get the interactivity to meet end-user expectations.



Da-Lite Tensioned Designer Contour® with Agility™ Battery Motor Option

This ceiling or wall-mounted electric screen allows for wire-free installation with the Agility Battery Motor. A single charge lasts over 200 cycles making it ideal for no-fuss installations. This option is especially handy in historic buildings where running conduit may be challenging or cost prohibitive. It's operational out of the box, no down time, no waiting, and no visible wires. It's a no brainer.



Chief Suspended Ceiling Projector System

Match that dazzling projection screen with a mount that cuts installation time by one-third and includes everything needed to complete most installations, and comes out of the box in the order needed with the mount and column preassembled. The adjustable 0-12" column has dual inlay channels for high and low voltage cables. The ceiling plate allows placement above or below tile and accommodates inconsistent T-grids.



Time Tip!

With the SightLine cable drop feature – there's no need for meticulous measurements onsite for the appropriate viewing height. Variable drop distance up to 70" ensures you can dial it in onsite.



Video

Vaddio's tagline is The Art of Easy™, and that's what they do with every solution. They make solutions easy to install, use and maintain. Vaddio cameras are network enabled to make management easier after installation. They also use common connectors like USB and RJ45, and most use PoE+ power so you don't have to put a wall outlet next to the camera.



Vaddio ConferenceSHOT ePTZ
Roll out rooms that take conferencing to the next level with the ConferenceSHOT ePTZ, an auto-framing camera for video conferencing. Deliver a dynamic, hands-free video experience that recreates the one-to-one video conference experience perfect for hybrid working environments. It is a professional camera at heart. Customize the camera's performance for different environments and meeting types for a more room-specific result.



Vaddio EasyIP Base Kits
For a more extensive system of multi-camera applications, EasyIP Base Kits combine Dante™ audio sources and up to four Vaddio EasyIP cameras with the added benefit of using category cables while saving time with simple video and audio routing through an intuitive web-based user interface. The best part is you can easily add to this system to upscale depending on the room's purpose and needs.



Vaddio IntelliSHOT ePTZ
Integrators can promise personalized video performance with every IntelliSHOT ePTZ auto-framing installation. Since the IntelliFrame technology is adjustable via the web interface, it can be fine-tuned remotely to define maximum zoom levels, rate of view adjustment, and reaction time to new elements. For a faster deployment, common configuration presets are available.



Vaddio ConferenceSHOT™ AV
Ideal for one size fits most video conferencing rooms, ConferenceSHOT AV integrates a PTZ camera and an audio conferencing mixer into a single USB 3.0 device, so you can easily connect up to two microphones and an external speaker directly to the camera. This setup turns a BYOD into a small to medium space conferencing system with professional camera quality and full room audio performance.



Time Tip!

The free Vaddio Deployment Tool software application enables you to select devices from the network, choose an action like rebooting the device, unmuting audio or updating firmware. You can even conduct mass firmware updates on hundreds of devices all at once. Should anyone have this much power? We say YES!

Audio

One thing you don't want to leave to chance in a mass rollout is good audio. You can't fix people forgetting to take themselves off mute, but you can make sure that they can be heard and hear others through strategically deployed speakers, amplifiers and microphones.



Vaddio Microphones

The quickest win in any large-scale rollout? CeilingMIC microphones! They catch audio from around the room and free up table space. TableMIC microphones are also available for getting equipment closer to the talkers in the room.



C2G Amplifiers

Audio feedback or buzzing can kill video conferencing momentum. When setting up a system for audio reinforcement, amplifiers are a must for noise reduction. They also provide additional power outputs and a standby mode for saving power.



C2G Speakers

For large conference rooms and up, drop-in ceiling speakers are plenum rated and deliver high quality audio for multimedia presentations. The 70-volt speaker is great for mass deployment because they can be daisy chained to each other. C2G speakers are also sold individually so you can order what you need when you need it.



Time Tip!

Vaddio's CeilingMIC microphones work with drop-tile ceilings and open-ceiling environments. They also include a 36-inch adjustable drop cable with a standard RJ45 connection to quickly set up no matter what type of room environment you encounter.



Power

Every room needs power. Sensitive AV electronics have specific power demands to perform at their best. Maximize uptime over an organization with power solutions that prevent problems, let you manage systems remotely, and provide power where needed for all room participants.



Wiremold ModPower™

The average person is carrying five devices that need charging. ModPower is the AV integrator's friend to provide that power for end users in any given room. Connect up to six of these power units together to create a handy system of power in flexible conferencing spaces.



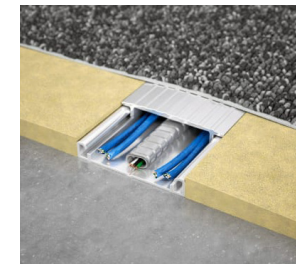
Wiremold Overfloor Raceways

OFR series raceways are handy for rooms that need cable pulled from the video conferencing system to the table without extensive renovation. These ADA-compliant raceways are tamper resistant and quick to install.



Middle Atlantic Uninterruptible Power Supply (UPS)

One of the easiest ways to reduce service calls when managing dozens to hundreds of conferencing spaces is to add a UPS system. Providing clean power protects sensitive AV equipment and guarantees maximum system uptime especially when power outages occur.



Connectrac® Under Carpet Raceway

Get signals where you need them with AV and data separated from power by steel conduit. This lean solution hides under carpet tile for a seamless aesthetic with capacity for 4 Cat6 cables. One complete Under Carpet Raceway provides everything you need in the length specified, including complete wireway, MDF ramps and power systems.



Middle Atlantic Power Distribution Units (PDU)

Designed with innovative features and robust fail-safes that provide reliable power infrastructure in every room. Network switched PDUs add the ability for authorized users to power cycle outlets remotely, perform power sequencing, and prevent unauthorized devices from causing outages.



Don't Forget the Power Strip!

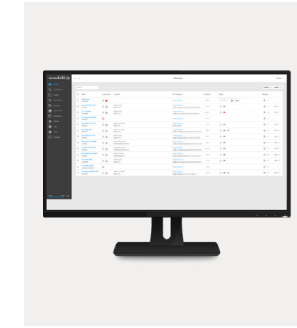


Time Tip!

Remote power management is the ultimate time saver. Middle Atlantic's RackLink™ enabled solutions allow you to remotely monitor individual outlets and perform hard power resets without having to visit the room. AutoPing will monitor the network status of connected devices and reboot them automatically.

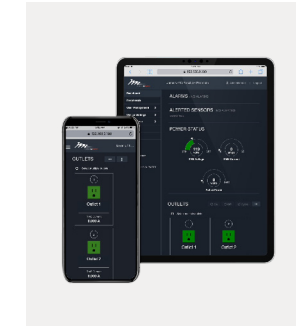
Remote Management

We've been talking about a lot of solutions that help with large scale rollouts. The secret sauce that makes it all work together is also the part we provide at no cost. Let's dig into the details.



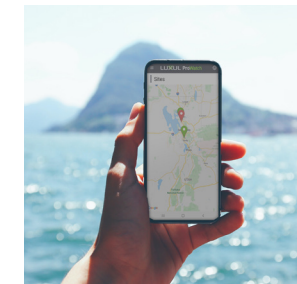
Vaddio Deployment Tool

Simplify your installations with the ability to view all compatible products across a deployment on one screen with the simple click of a button. Select devices from the network, choose an action like reboot the device, unmute the audio, or update firmware, all from the comfort of your workspace. You can even conduct mass firmware updates on hundreds of devices all at once.



Middle Atlantic RackLink Remote Power Management

It's like a secret insurance policy when your other remote or IP enabled devices aren't responding. You can monitor the quality of the power to devices and get alerts when specified thresholds are reached. Environmental monitoring notifies you if temperatures or humidity are at equipment-damaging levels, giving you the ability to resolve problems immediately.



Luxul ProWatch™

Proactively respond to network issues as they arise while avoiding truck rolls for simple system management tasks. ProWatch gives you the ability to manage your clients' systems without having to set foot on their properties.



Time Tip!

These remote management systems here speak for themselves. Enjoy troubleshooting from your office instead of rolling a truck to go to the site!



Storage

What used to take 4 rack units of space can now be easily stored behind a display, and it can do more things. It's becoming an increasing practice to have supporting equipment close to the location it is used instead of in a rack room. Easy-to-deploy storage solutions designed to keep equipment safe and serviceable help keep conference rooms looking great by hiding equipment out of sight.



Middle Atlantic MFR Series Rack

If you decide you still need a rack but don't have a rack closet, we have you covered. The MFR Series Rack on wheels ships fully assembled to let you set up multiple racks off site and get rooms rolling quickly.



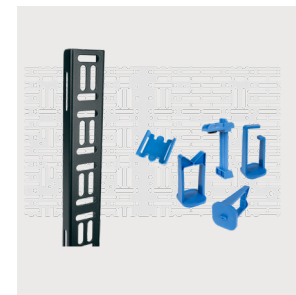
Chief Proximity In-Wall Storage Box with LeverLock

You'll wonder why these haven't been in your life before. These storage boxes are depth adjustable and come in multiple sizes to hide behind displays with plenty of equipment space. LeverLock compatibility means you can take advantage of Forward small device mounting solutions for off-site standardization, speed of install, and easy deployment.



Chief Component Storage Panels

Clean integration of components and cables is a must in conference spaces. Storage panels can be easily installed on walls, behind displays, and under tables/desks to seamlessly conceal AV components. The removable design provides the ability to standardize off-site and facilitate a fast roll-out.



Middle Atlantic Forward Accessories

When you see "LeverLock" you should automatically think about the Forward Accessories, the little blue heroes of AV. These clip-on accessories will save the install team countless hours while making the installations look amazing.

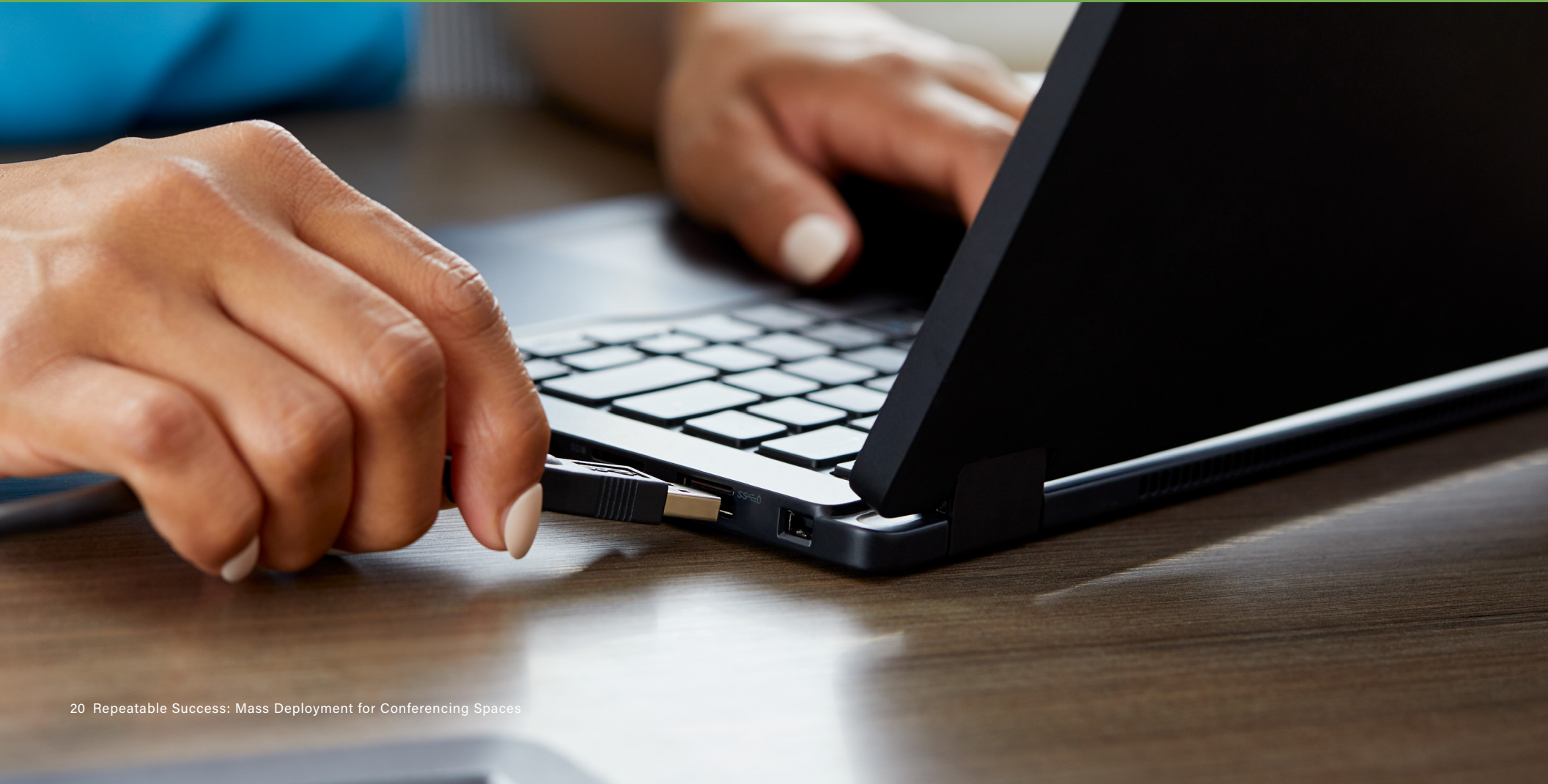


Time Tip!

Save time now and save time later. The Chief Proximity® Component Storage Slide-Lock Panel CSSLP15x10 simplifies service and accessibility to the equipment. This storage panel slides out left, right or below the display. The built-in and tool-free 15" x 10" LeverLock plate is easily removed and replaced from the slide-lock panel to service the equipment post-installation without touching the display.

Connectivity

You've got a lot of equipment already, but you need to get signals from one thing to another. You have hundreds of rooms to equip with your system design. Lucky for you, we've got connections.



C2G HDBaseT Extenders

If you have large rooms and need to be able to guarantee that a killer presentation runs without a hitch regardless of the distance from the presenter to the content, HDBaseT Extenders help transmit 4K content up to 328 feet using a single Cat6a Ethernet cable. And you get the added benefit of transmitting ethernet, power, control and USB signals.



C2G USB 3.0 Cable

With conferencing needing to rely on video more than ever, USB 3.0 is the table stakes, buy-in for simple connectivity and access to high-quality video and audio you don't need to worry about.



C2G Performance Series

In case you hadn't heard, the king of cables dove into the AV world with premium HDMI® solutions that meet the high demands of the industry when transmitting uncompressed audio and video at resolutions from 4K to 8K. All the C2G Performance Series HDMI Cables come 100% tested so you can be sure they will work at the site. Their rated cable jackets meet the highest standards required for the installation location. They also have gripping connectors, 2X the port retention, and commercial grade connectors for better shielding, conductivity and durability. That said, you still have plenty of options to fit the requirements of any mass deployment. Here are a few highlights:

Premium High Speed HDMI

When you need that extra-comfort of knowing the cable has been tested and certified to conform with the Premium HDMI Cable Certification Program.



Ultra Flexible High Speed HDMI

Designed for installations in tight spaces like some AV rack designs.



Ultra Flexible Active High Speed HDMI

Get audio and video signal from point A to point B by using a little power boost to go longer distances without an extender.



High Speed HDMI Active Optical

Active optical cables come with amazing long-distance capabilities of hundreds of feet. Keep an eye out for more launches of these cables from C2G.



Time Tip!

C2G will take all the cables for all your conference rooms and kit them out to your requirements for each room. We'll even box them up together so you don't have to unbox a dozen individual cables. We also test every cable so you can be sure you won't get on site with a defective cable – saving you truckloads of time.



Network Switches

Configuration is the name of the game for mass deployment when it comes to network switches. Having each room in an enterprise set up similarly saves time when servicing, mass deploying changes, and when setting up switches at a single location.



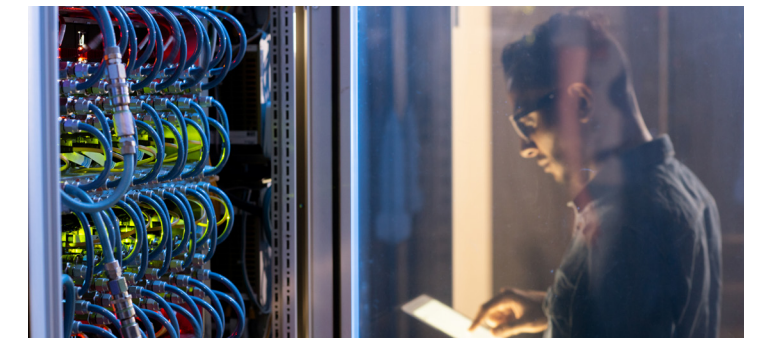
Luxul Managed Switches

Deploying managed switches has never been easier with the various varieties to fit your needs. Some come with the ports in the back for a clean AV rack configuration that's harder for end users to accidentally mess up. On the other hand, some integrators like the ports in the front for ease of servicing as their guiding force. In both cases, all managed switches are ProWatch integrated for remote monitoring and management, and work with a variety of conferencing technologies.



Luxul Unmanaged Switches

When you need to move fast, unmanaged switches are small, easy ways to add ports into any situation. Simply plug in these switches to power, then add cameras. The SW-100-05PD has the added benefit of only needing a PoE+ switch or injector for power, while also providing four ports of Ethernet connectivity with one port powering another PoE device. They are also small enough to place anywhere you need to add wired internet availability without taking up space.



Time Tip!

All Luxul managed switches are ProWatch integrated, which provides remote monitoring and management to connected devices, when a Luxul ProWatch+ device is also connected to the network. Even without that, Luxul managed switches feature power scheduling to save energy when not in use. Auto recovery on managed switches also does the work for you if a device falls offline by rebooting through that device's port.

Accessories

Every good integrator has those sure-fire hits that are such easy wins, it would be bananas to not include them in every video conferencing room. Here are our top picks.



C2G Docking Stations

Another way to ensure everyone can hook into power, the Ethernet and/or AV system, docking stations are a great solution for every employee with a company device that needs to connect to the digital advantages of being in the office.



C2G Adapter Ring Series

Fool proof any room to be able to connect any user's device to the system regardless of the available device ports with retractable universal mounted 4K HDMI Adapter Rings. They are easily customizable to hold the connectors most common in any given office environment.



Need Expert Advice For Your Mass Deployment Project?

We've got a team of Solutions Engineers waiting to hear how they can help you. Read more about the team and what they have to offer in this [blog](#).

Contact the Team Now!



BE SEEN HEARD

LEARN MORE

AMAZING AV EXPERIENCES | legrandav.com

USA 866.977.3901 av.support@legrand.com CANADA 877.345.4329 av.support@legrand.com

EMEA +31 495 580 840 av.emea.sales@legrand.com APAC +852 2145 4099 av.asia.sales@legrand.com

©2023 Legrand AV Inc. 220201 Rev B 4/23 C2G, Chief, Connectrac, Da-Lite, Luxul, Middle Atlantic, Vaddio, and Wiremold registered trademarks of Legrand AV Inc. All other brand names or marks are used for identification purposes and are trademarks of their respective owners. All patents are protected under existing designations. Other patents pending.

CONTACT US

COMMERCIAL BRANDS

C2G | Chief | Connectrac | Da-Lite | Luxul | Middle Atlantic | Vaddio | Wiremold