

# Cat6a NETWORKING PATCH CABLES



**Cat6a Snagless Unshielded UTP Ethernet Network Patch Cable**

**Features & Benefits**

- Supports 10 Gigabit networks up to 328ft for fast data transmission and maximum performance
- Meets the ANSI/TIA-568-C.2 Cat6a requirements for supporting a wide variety of applications

LENGTH	GRAY	BLUE	BLACK	AQUA	GREEN	RED	YELLOW	ORANGE	PURPLE	WHITE	PINK
6in	00972	00974	00976	00978	50778	50797	50740	50835	50816	50759	50854
1ft	00655	00689	00723	00757	50779	50798	50741	50836	50817	50760	50855
2ft	00656	00690	00724	00758	50780	50799	50742	50837	50818	50761	50856
3ft	00657	00691	00725	00759	50781	50800	50743	50838	50819	50762	50857
4ft	00658	00692	00726	00760	50782	50801	50744	50839	50820	50763	50858
5ft	00659	00693	00727	00761	50783	50802	50745	50840	50821	50764	50859
6ft	00660	00694	00728	00762	50784	50803	50746	50841	50822	50765	50860
7ft	00661	00695	00729	00763	50785	50804	50747	50842	50823	50766	50861
8ft	00662	00696	00730	00764	50786	50805	50748	50843	50824	50767	50862
9ft	00663	00697	00731	00765	50787	50806	50749	50844	50825	50768	50863
10ft	00664	00698	00732	00766	50788	50807	50750	50845	50826	50769	50864
12ft	00665	00699	00733	00767	50789	50808	50751	50846	50827	50770	50865
14ft	00666	00700	00734	00768	50790	50809	50752	50847	50828	50771	50866
15ft	00667	00701	00735	00769	50791	50810	50753	50848	50829	50772	50867
20ft	00668	00702	00736	00770	50792	50811	50754	50849	50830	50773	50868
25ft	00669	00703	00737	00771	50793	50812	50755	50850	50831	50774	50869
30ft	00670	00704	00738	00772	50794	50813	50756	50851	50832	50775	50870
35ft	00671	00705	00739	00773	50795	50814	50757	50852	50833	50776	50871
50ft	50885	50877	50881	50873	50796	50815	50758	50853	50834	50777	50872
75ft	50886	50878	50882	50874	—	—	—	—	—	—	—
100ft	50887	50879	50883	50875	—	—	—	—	—	—	—
150ft	50888	50880	50884	50876	—	—	—	—	—	—	—



**Cat6a Snagless Unshielded (UTP) Slim Ethernet Patch Cable**

**Features & Benefits**

- 10Gbps data speeds up to 328ft

LENGTH	GRAY	BLUE	BLACK	GREEN	RED	YELLOW	ORANGE	PURPLE	WHITE	PINK
6in	—	—	—	—	—	—	—	—	—	—
1ft	C2G30111	C2G30125	C2G30139	C2G30153	C2G31060	C2G30167	C2G30174	C2G30188	C2G30181	C2G30195
2ft	C2G30112	C2G30126	C2G30140	—	—	—	—	—	—	—
3ft	C2G30113	C2G30127	C2G30141	C2G30154	C2G31061	C2G30168	C2G30175	C2G30189	C2G30182	C2G30196
4ft	C2G30114	C2G30128	C2G30142	—	—	—	—	—	—	—
5ft	C2G30115	C2G30129	C2G30143	C2G30155	C2G31062	C2G30169	C2G30176	C2G30190	C2G30183	C2G30197
6ft	C2G30116	C2G30130	C2G30144	—	—	—	—	—	—	—
7ft	C2G30117	C2G30131	C2G30145	C2G30156	C2G31063	C2G30170	C2G30177	C2G30191	C2G30184	C2G30198
8ft	C2G30118	C2G30132	C2G30146	—	—	—	—	—	—	—
9ft	C2G30119	C2G30133	C2G30147	—	—	—	—	—	—	—
10ft	C2G30120	C2G30134	C2G30148	C2G30157	C2G31064	C2G30171	C2G30178	C2G30192	C2G30185	C2G30199
12ft	C2G30121	C2G30135	C2G30149	—	—	—	—	—	—	—
14ft	—	—	—	—	—	—	—	—	—	—
15ft	C2G30122	C2G30136	C2G30150	C2G30158	C2G31065	C2G30172	C2G30179	C2G30193	C2G30186	C2G30200
20ft	C2G30123	C2G30137	C2G30151	—	—	—	—	—	—	—
25ft	C2G30124	C2G30138	C2G30152	C2G30159	C2G31066	C2G30173	C2G30180	C2G30194	C2G30187	C2G30201

# Cat6a NETWORKING PATCH CABLES

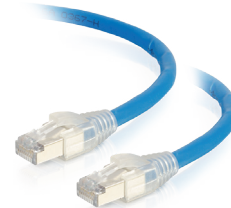


## Cat6a Snagless Shielded STP Ethernet Network Patch Cable

### Features & Benefits

- Designed for network adapters, hubs, switches, routers, HDBaseT applications and more
- Supports 10 Gigabit networks up to 328ft for fast data transmission and maximum performance
- Meets the ANSI/TIA-568-C.2 Cat6a requirements for supporting a wide variety of applications

LENGTH	GRAY	BLUE	BLACK	AQUA
6in	00971	00973	00975	00977
1ft	00638	00672	00706	00740
2ft	00639	00673	00707	00741
3ft	00640	00674	00708	00742
4ft	00641	00675	00709	00743
5ft	00642	00676	00710	00744
6ft	00643	00677	00711	00745
7ft	00644	00678	00712	00746
8ft	00645	00679	00713	00747
9ft	00646	00680	00714	00748
10ft	00647	00681	00715	00749
12ft	00648	00682	00716	00750
14ft	00649	00683	00717	00751
15ft	00650	00684	00718	00752
20ft	00651	00685	00719	00753
25ft	00652	00686	00720	00754
30ft	00653	00687	00721	00755
35ft	00654	00688	00722	00756



## HDBaseT Certified Cat6a Cable with Discontinuous Shielding - Blue

### Features & Benefits

- Discontinuous shielding avoids need for grounding
- HDBaseT Class A and B certified
- Designed to support up to 10 Gigabit data transmission
- Snagless design for high density applications

LENGTH	BLUE
35ft	43171
50ft	43172
75ft	43173
100ft	43174
150ft	43175
200ft	43176
250ft	43177
300ft	43178

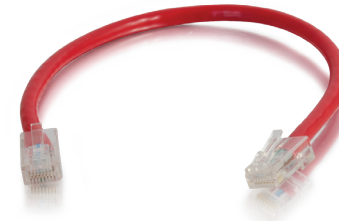
# Cat6 NETWORKING PATCH CABLES



Cat6 Snagless Unshielded UTP Ethernet Network Patch Cable

**Features & Benefits**

- Snagless design protects clips when plugging and unplugging
- Standard RJ45 connectors and unshielded twisted pair wires



Cat6 Non-Booted Unshielded UTP Ethernet Network Patch Cable

**Features & Benefits**

- Supports 10 Gigabit networks up to 180ft for fast data transmission and maximum performance and supports 1 Gigabit up to 328ft
- Meets all Cat6 TIA/EIA requirements for supporting a wide variety of applications

LENGTH	GRAY	BLUE	BLACK	GREEN	RED	YELLOW	ORANGE	PURPLE	WHITE	PINK
6in	00951	00952	00953	00954	00955	00956	00957	00958	00959	00960
1ft	27130	27140	27150	27170	27180	27190	27810	27800	27160	04043
2ft	03965	03973	03981	03989	03998	04007	04016	04025	04034	04044
3ft	27131	27141	27151	27171	27181	27191	27811	27801	27161	04045
4ft	03966	03974	03982	03990	03999	04008	04017	04026	04035	04046
5ft	31340	31341	31342	31344	31345	31346	31348	31347	31343	04047
6ft	03967	03975	03983	03991	04000	04009	04018	04027	04036	04048
7ft	27132	27142	27152	27172	27182	27192	27812	27802	27162	04049
8ft	03968	03976	03984	03992	04001	04010	04019	04028	04037	04050
9ft	03969	03977	03985	03993	04002	04011	04020	04029	04038	04051
10ft	27133	27143	27153	27173	27183	27193	27813	27803	27163	04052
12ft	03970	03978	03986	03994	04003	04012	04021	04030	04039	04053
14ft	27134	27144	27154	27174	27184	27194	27814	27804	27164	04054
15ft	22016	22015	22014	03995	04004	04013	04022	04031	04040	04055
20ft	03971	03979	03987	03996	04005	04014	04023	04032	04041	04056
25ft	27135	27145	27155	27175	27185	27195	27815	27805	27165	04057
30ft	03972	03980	03988	03997	04006	04015	04024	04033	04042	04058
35ft	31350	31351	31352	31354	31355	31356	31358	31357	31353	04059
50ft	27136	27146	27156	27176	27186	27196	27816	27806	27166	04060
75ft	31360	31361	31362	31364	31365	31366	31368	31367	31363	04061
100ft	27137	27147	27157	27177	27187	27197	27817	27807	27167	04062
150ft	27139	27149	27159	27179	27189	27199	27819	27809	27169	04063

LENGTH	GRAY	BLUE	BLACK	GREEN	RED	YELLOW	ORANGE	PURPLE	WHITE	PINK
6in	00961	00962	00963	00964	00965	00966	00967	00968	00969	00970
1ft	04064	04085	04106	04127	04148	04169	04190	04211	04232	04253
2ft	04065	04086	04107	04128	04149	04170	04191	04212	04233	04254
3ft	04066	04087	04108	04129	04150	04171	04192	04213	04234	04255
4ft	04067	04088	04109	04130	04151	04172	04193	04214	04235	04256
5ft	04068	04089	04110	04131	04152	04173	04194	04215	04236	04257
6ft	04069	04090	04111	04132	04153	04174	04195	04216	04237	04258
7ft	04070	04091	04112	04133	04154	04175	04196	04217	04238	04259
8ft	04071	04092	04113	04134	04155	04176	04197	04218	04239	04260
9ft	04072	04093	04114	04135	04156	04177	04198	04219	04240	04261
10ft	04073	04094	04115	04136	04157	04178	04199	04220	04241	04262
12ft	04074	04095	04116	04137	04158	04179	04200	04221	04242	04263
14ft	04075	04096	04117	04138	04159	04180	04201	04222	04243	04264
15ft	04076	04097	04118	04139	04160	04181	04202	04223	04244	04265
20ft	04077	04098	04119	04140	04161	04182	04203	04224	04245	04266
25ft	04078	04099	04120	04141	04162	04183	04204	04225	04246	04267
30ft	04079	04100	04121	04142	04163	04184	04205	04226	04247	04268
35ft	04080	04101	04122	04143	04164	04185	04206	04227	04248	04269
50ft	04081	04102	04123	04144	04165	04186	04207	04228	04249	04270
75ft	04082	04103	04124	04145	04166	04187	04208	04229	04250	04271
100ft	04083	04104	04125	04146	04167	04188	04209	04230	04251	04272
150ft	04084	04105	04126	04147	04168	04189	04210	04231	04252	04273

# Cat6 NETWORKING PATCH CABLES



## Cat6 Snagless Shielded STP Ethernet Network Patch Cable

### Features & Benefits

- Designed for network adapters, hubs, switches, routers, HDBaseT applications and more
- Supports 10 Gigabit networks up to 180ft for fast data transmission and maximum performance and supports 1 Gigabit up to 328ft
- Meets the ANSI/TIA-568-C.2 Cat6 requirements for supporting a wide variety of applications

LENGTH	GRAY	BLUE	BLACK	GREEN	RED	YELLOW	ORANGE	PURPLE	WHITE
6in	00979	00980	00981	00982	00983	00984	00985	00986	00987
1ft	00774	00791	00808	00825	00842	00859	00876	00897	00914
2ft	00775	00792	00809	00826	00843	00860	00877	00898	00915
3ft	00776	00793	00810	00827	00844	00861	00878	00899	00916
4ft	00777	00794	00811	00828	00845	00862	00879	00900	00917
5ft	00778	00795	00812	00829	00846	00863	00880	00901	00918
6ft	00779	00796	00813	00830	00847	00864	00881	00902	00919
7ft	00780	00797	00814	00831	00848	00865	00882	00903	00920
8ft	00781	00798	00815	00832	00849	00866	00883	00904	00921
9ft	00782	00799	00816	00833	00850	00867	00884	00905	00922
10ft	00783	00800	00817	00834	00851	00868	00885	00906	00923
12ft	00784	00801	00818	00835	00852	00869	00886	00907	00924
14ft	00785	00802	00819	00836	00853	00870	00891	00908	00925
15ft	00786	00803	00820	00837	00854	00871	00892	00909	00926
20ft	00787	00804	00821	00838	00855	00872	00893	00910	00927
25ft	00788	00805	00822	00839	00856	00873	00894	00911	00928
30ft	00789	00806	00823	00840	00857	00874	00895	00912	00929
35ft	00790	00807	00824	00841	00858	00875	00896	00913	00930



## Cat6 Snagless Unshielded (UTP) Slim Ethernet Network Patch Cable

### Features & Benefits

- 36% reduction in diameter compared to standard Cat5e cables
- Snagless connector design
- Meets the ANSI/TIA-568-C.2 standard for Patch Cord Performance
- 28AWG construction

LENGTH	GRAY	BLUE	BLACK	GREEN	RED	YELLOW	ORANGE	PURPLE	WHITE	PINK
6in	01084	01071	01097	—	—	—	—	—	—	—
1ft	01085	01072	01098	01160	01165	01170	01175	01180	01185	01190
1½ft	01086	01073	01099	—	—	—	—	—	—	—
2ft	01087	01074	01100	—	—	—	—	—	—	—
2½ft	01088	01075	01101	—	—	—	—	—	—	—
3ft	01089	01076	01102	01161	01166	01171	01176	01181	01186	01191
4ft	01090	01077	01103	—	—	—	—	—	—	—
5ft	01091	01078	01104	01162	01167	01172	01177	01182	01187	01192
6ft	01092	01079	01105	—	—	—	—	—	—	—
7ft	01093	01080	01106	01163	01168	01173	01178	01183	01188	01193
8ft	01094	01081	01107	—	—	—	—	—	—	—
9ft	01095	01082	01108	—	—	—	—	—	—	—
10ft	01096	01083	01109	01164	01169	01174	01179	01184	01189	01194

# Cat5e NETWORKING PATCH CABLES



## Cat5e Snagless Unshielded UTP Ethernet Network Patch Cable

### Features & Benefits

- Snagless design protects clips when plugging and unplugging
- Standard RJ45 connectors and unshielded twisted pair wires

LENGTH	GRAY	BLUE	BLACK	GREEN	RED	YELLOW	ORANGE	PURPLE	WHITE	PINK
6in	00931	00932	00933	00934	00935	00936	00937	00938	00939	—
1ft	24814	23828	26969	24229	26968	22105	—	—	29952	—
2ft	00383	00392	00401	00410	00420	00430	00441	00462	00482	00493
3ft	15177	15178	15180	15179	15223	15221	00442	—	19479	—
4ft	00384	00393	00402	00411	00421	00431	—	—	00483	00495
5ft	15187	15188	15189	15185	15190	15191	—	—	19477	00496
6ft	00385	00394	00403	00412	00422	—	—	—	00484	00497
7ft	15192	15193	15196	15194	15197	15198	—	—	19478	00498
8ft	—	—	00404	—	—	—	—	—	00485	—
9ft	—	—	00405	00414	—	00434	—	—	—	—
10ft	15199	15200	15202	15201	15203	15204	—	—	25428	00501
12ft	—	—	—	—	00425	00435	00450	—	00487	—
14ft	15205	15206	15208	15207	15224	15210	—	—	19529	00503
15ft	22013	22012	22011	—	—	—	—	—	00488	—
20ft	00389	00398	00407	—	—	—	—	00474	00489	00505
25ft	15211	15212	15222	15213	15215	15216	00454	—	19520	—
30ft	00390	00399	00408	00418	00428	—	—	—	00490	—
35ft	00391	00400	00409	00419	00429	00439	—	—	00491	—
50ft	19305	22037	22038	20036	20088	22142	—	00478	24046	—
75ft	26970	22146	26971	22147	—	—	—	00479	—	—
100ft	19329	21471	27096	19387	19386	20579	00459	—	21472	—
150ft	19378	23870	19381	—	19388	—	—	—	19352	—
200ft	19145	21943	—	—	—	—	—	—	—	—



## Cat5e Non-Booted Unshielded UTP Ethernet Network Patch Cable

### Features & Benefits

- Designed for network adapters, hubs, switches, routers and more
- Constructed with unshielded twisted pair wires
- CMG In-Wall Rated Jacket

LENGTH	GRAY	BLUE	BLACK	GREEN	RED	YELLOW	ORANGE	PURPLE	WHITE	PINK
6in	—	—	—	—	—	—	00947	—	—	—
1ft	24959	25462	26374	—	—	25623	00565	—	27976	—
2ft	24960	25151	00528	—	—	24669	—	00587	—	—
3ft	22672	22673	22677	—	22675	22676	—	—	—	00619
4ft	00513	—	00529	—	—	—	—	00589	—	—
5ft	22678	22679	22683	—	—	22682	—	—	—	—
6ft	—	—	—	—	—	—	—	—	—	—
7ft	22684	26685	22689	—	—	22688	—	—	—	—
8ft	—	—	—	—	—	—	—	—	—	—
9ft	—	—	00532	—	—	—	—	—	—	—
10ft	22690	22691	22695	—	—	22694	—	—	—	00626
12ft	00517	—	—	—	—	—	—	—	—	—
14ft	—	—	—	—	—	—	—	—	—	—
15ft	22010	22709	22708	—	00552	00561	—	—	—	—
20ft	—	—	—	—	—	—	00578	—	—	—
25ft	22702	22703	22707	—	—	22706	—	—	23803	—
30ft	—	00526	—	—	00554	—	00580	—	—	—
35ft	—	—	—	25038	25037	25039	—	—	—	—
50ft	24392	24393	24395	—	24396	—	—	—	23796	—
75ft	24398	24399	24401	—	—	24403	—	—	22160	—
100ft	24702	22161	26972	—	—	22164	—	—	23799	—
150ft	24636	00527	00536	—	—	—	00585	—	00616	—

# Cat5e NETWORKING PATCH CABLES



## Cat5e Snagless Shielded STP Ethernet Patch Cable

### Features & Benefits

- Supports 1 Gigabit networks up to 328ft for fast data transmission
- Meets all Cat5e TIA/EIA requirements for supporting a wide variety of applications

LENGTH	BLUE	BLACK	GRAY	RED
3ft	27241	28690	27240	27242
5ft	27246	28691	27245	27247
7ft	27251	28692	27250	27252
10ft	27256	28693	27255	27257
14ft	27261	28694	27260	27262
25ft	27266	28695	27265	27267
50ft	27271	28696	27270	27272
75ft	28701	28705	28700	28702
100ft	28707	28711	28706	28708
150ft	28713	28717	28712	28714

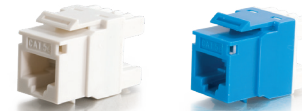


## Cat5e Non-Booted Unshielded UTP Crossover Network Patch Cable

### Features & Benefits

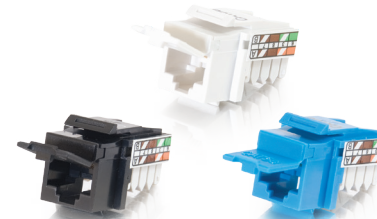
- Supports bandwidth-intensive applications up to 350 MHz
- Meets all Cat5e TIA/EIA requirements for supporting a wide variety of applications

LENGTH	BLUE	BLACK	GREEN	RED	YELLOW	ORANGE
3ft	—	—	—	24496	24497	24494
5ft	—	—	—	24503	24504	24502
7ft	24506	24508	—	24510	24511	24509
10ft	—	26689	—	26690	26691	24513
14ft	—	26703	—	26706	26707	26704
25ft	—	—	26700	26709	26696	24515
100ft	—	—	—	24520	—	—



## Cat5e RJ45 Keystone Jack

White - CG03791  
Blue - CG03796



## 90 Cat5e RJ45 Keystone Jack

White - CG35201  
Black - CG35203  
Blue - CG35206



## RJ11/RJ45 Crimping Tool with Cable Stripper

CG19579



## 24-Port Cat5e 110-Type Patch Panel

CG37197



## 48-Port Cat5e 110-Type Patch Panel

CG37198