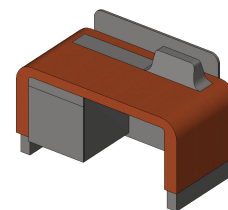


REVIT CONTENT GUIDE



| | |
|------------------------|--|
| Manufacturer: | Middle Atlantic |
| File: | Lectern-Height_Adjustable-Middle_Atlantic-L7_Series.rfa |
| Type Catalog: | Not Applicable |
| Rendering file: | Not Applicable |
| Schedule file: | Schedule - Lectern-Height_Adjustable-Middle_Atlantic-L7_Series.rvt |

Instance Properties

| | |
|-------------------------------------|---|
| Construction | |
| Rack is 10 RU with Storage | <input type="checkbox"/> |
| Rack is 12 RU | <input type="checkbox"/> |
| Rack is 6 RU with Doc Cam & Storage | <input checked="" type="checkbox"/> |
| Rack is 8 RU with Doc Cam | <input type="checkbox"/> |
| Top Option is 10 in Touchscreen | <input type="checkbox"/> |
| Top Option is 7 in Touchscreen | <input type="checkbox"/> |
| Top Option is Flat Top with Storage | <input checked="" type="checkbox"/> |
| Electrical | |
| Apparent Load* | 0.00 VA |
| Voltage* | 0.00 V |
| Dimension | |
| Depth* | 30.820 |
| Height* | 32.000 |
| Height Desired | 32.000 |
| Width* | 62.090 |
| Graphics | |
| Drawer is Open* | <input type="checkbox"/> |
| Has Snap Locations* | <input checked="" type="checkbox"/> |
| Identity Data | |
| Equipment Number* | |
| Part Description* | ADA Compliant Height-Adjustable Lectern, Montana Walnut |
| Part Number* | L7-F6 1A-WD-SLHB9 |
| Rack Kit Part Number | L7-6U-DS-U |
| Top Option Part Number | L7-FL-CON |

Type Properties

The family contains the following 3 types:

- Montana Walnut (Values for this type are shown below)
- Brite White
- Glamour Cherry

| | |
|----------------------|----------|
| Electrical | |
| Frequency* | 0.00 Hz |
| Load Classification* | Other |
| Number of Poles* | 1 |
| Power Factor* | 1.000000 |

| Identity Data | |
|-----------------------------|---|
| Copyright* | Copyright © Legrand AV |
| Date Created* | February 25, 2019 |
| Date Modified* | February 25, 2019 |
| Description* | See Part Description |
| Equipment Abbreviation* | AVE |
| Family Version* | 1.0 |
| Manufacturer* | Middle Atlantic |
| Model* | See Part Number |
| Model Disclaimer* | Contact Middle Atlantic for more information |
| Product Documentation Link* | https://www.middleatlantic.com/-/media/middleatlantic/documents/techdocs/l7-series/96_01252_l7.ashx |
| Product Page URL* | https://www.middleatlantic.com/products/technical-furniture/lecterns/l7-series-lecterns-pre-config/l7-f61a-wd-slhb9.aspx |
| Type Image | -1 |
| URL* | https://www.legrand.us/middleatlanticproducts.aspx |
| Materials | |
| Frame Material | 18945 |
| Product Material* | 18951 |

Half-tone text in the property tables indicates that the value is locked from editing.

*Indicates Shared Parameter and can be scheduled

Loading and Placing into the Project

One "Data Devices" family is supplied and may be loaded into a Revit project through all traditional methods. The Lectern requires a work-plane host to be placed within the project (i.e. floor). Also, ensure that the visibility settings within the project are modified to have the Data Devices category visible.

Project Behavior

Within the type and instance properties dialogues, the user will find useful information for scheduling purposes such as Height, Width, Depth, and other unique properties of the model. In "Identity Data" the user will find information specific to Middle Atlantic and the model, i.e.: family revision information, Legrand copyright information, part description, product URL and other specific data. *See scheduling description below.

The lectern contains a rack which, when exposed (by using the 'Drawer is Open' parameter), can have devices hosted to it.

The height of the Lectern is adjustable based on the specifications of the product. The height can be changed by inputting the desired height dimension into the 'Height Desired' instance parameter. The model is limited between the minimum and maximum height limits as specified by the product.

The model contains electrical parameter that are mapped to the electrical connector so that the family may be connected to an electrical system within a project.

The model has different available configurations and if the model is misconfigured, it will produce an error box along with a message relaying the error in the part number and part description instance parameters.

Instance Parameters

In the "Instance Parameters", the user has the following options to modify:

Equipment Number – For tagging separately placed instances.

Has Snap Locations – For toggling the visibility of the snap locations for the RU mounting locations on the rack.

Drawer is Open – For toggling the visibility of the drawer for the rack to allow for placement of rack mounted devices.

Rack is (6 RU/8 RU/10 RU/12 RU) – For selecting the desired drawer configuration for the lectern. Note: Only one option can be selected at a time.

Top Option is (Flat Top/7 in Touchscreen/10 in Touchscreen) – For selecting the desired top option for the lectern. Note: Only one option can be selected at a time.

Type Parameters

The lectern represents a manufactured product. To this end the type parameters within the family should not be modified for Standard configuration.

Please note:

Product Page URL – Directs to the manufacturer’s online listing of the product
Product Documentation Link – Directs to the product’s online specification sheet
Equipment Abbreviation – This parameter exists for filtering schedules. * See scheduling description below
Family Version – Lists the current revision number of the family

Visibility

For best performance within a project all model geometry is turned off in Plan View when placed in the product’s intended orientation. It is then represented by a masking region that will be visible in plan view. For ease of use all geometry is assigned to the category Data Devices.

Rendering

When the family is loaded into a project standard Middle Atlantic materials are imported. The materials may be modified, though ensure that the modified selection matches an actual manufacturer supplied option.

Schedule Creation

Middle Atlantic products may be scheduled utilizing the schedule view in the provided project file. Select and copy (Ctrl+C) the schedule from the sheet view and paste it (Ctrl+V) into a sheet in your project. The schedule filters are set to look for only families with Manufacturer as “Middle Atlantic” and Equipment Abbreviation as “AVE”.