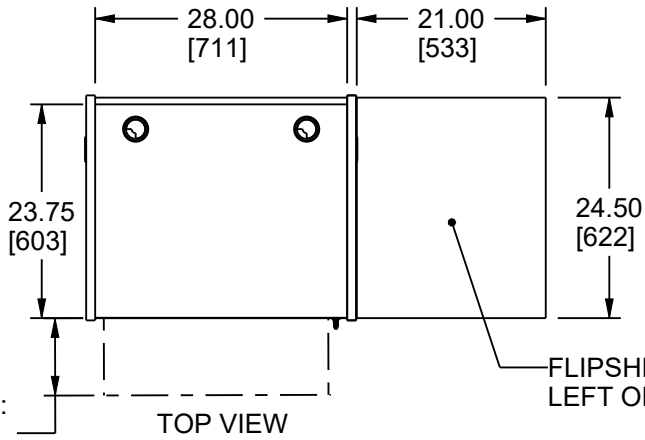


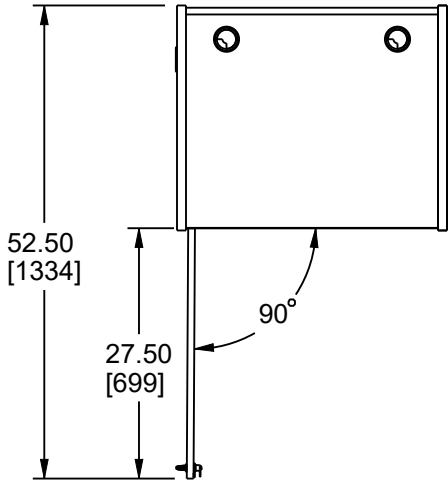
NOTE(S):
1. DIMENSIONS SHOWN IN FORMAT IN [MM]



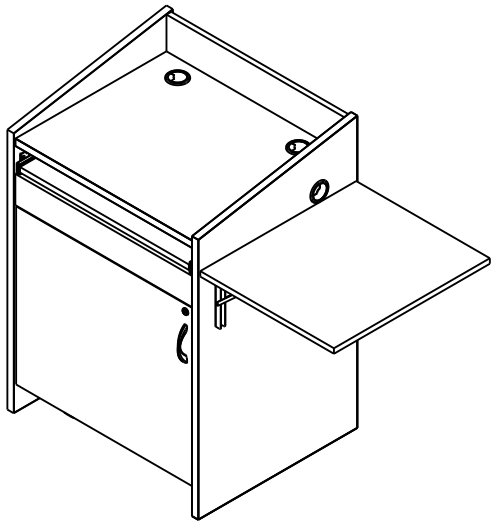
KEYBOARD TRAY EXTENDED:
USABLE AREA = 26.53 [674] X 8.50 [216]
USABLE HEIGHT = 2.50 [64]

FLIPSHELF CAN BE ON
LEFT OR RIGHT SIDE

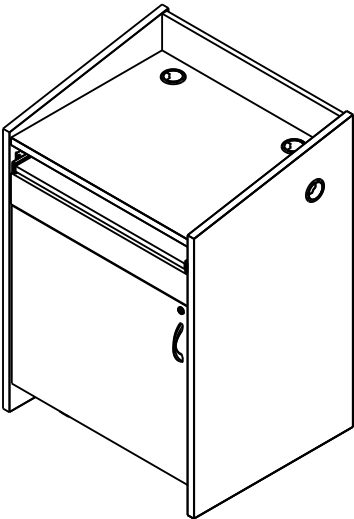
TOP VIEW



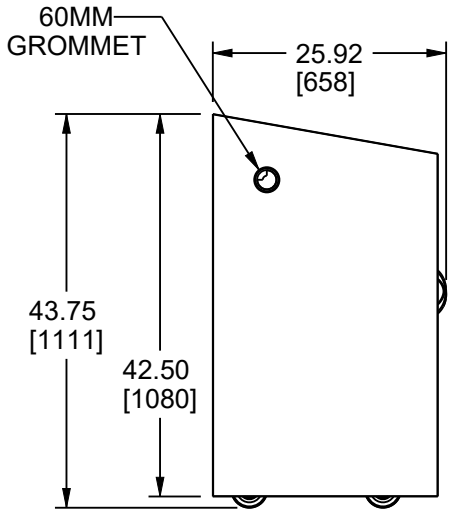
TOP VIEW
DOOR OPEN



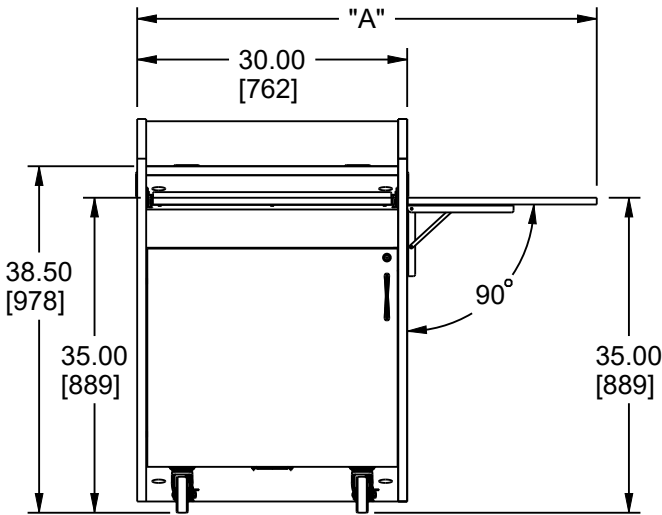
L2LDC2FCMXX



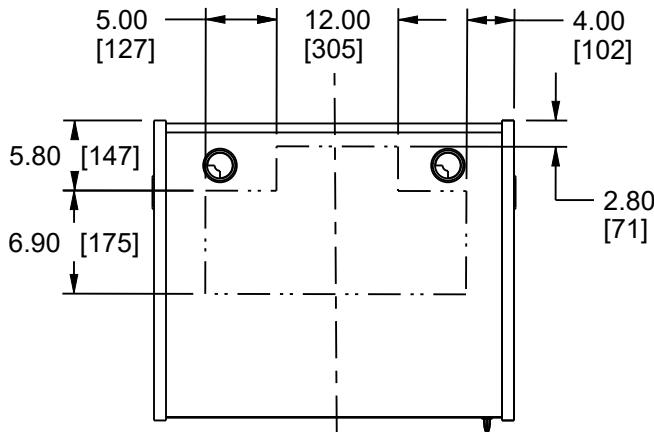
L2LDC2CCMXX



LEFT VIEW

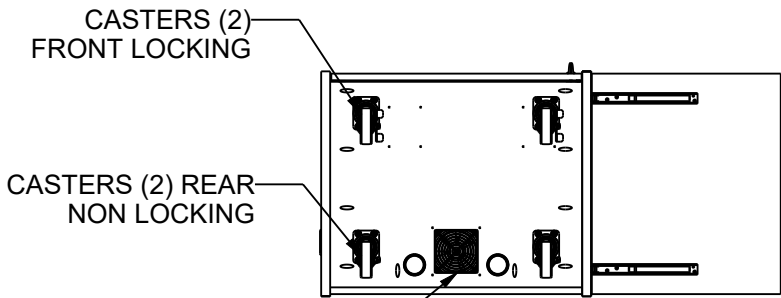


FRONT VIEW



SCALE 1/16

POSSIBLE CUTOUT LOCATIONS
9.44 [240] FROM TOP DEPTH



BOTTOM VIEW

PRODUCT # FLIPSHELF	WEIGHT CAPACITY [LBS/KG]	MAXIMUM QTY PER LECTERN
L2-FLIPSHELF-XX	20 / 9	2
XX = KM = KNOTTED MAPLE FINISH XX = GE = BLACK MEDINA XX = GC = GRAINED DARK CHERRY FINISH		

PRODUCT # LECTERN	FLIPSHELF INCLUDED	RACK: WEIGHT CAPACITY [LBS/KG]	TOTAL: WEIGHT CAPACITY [LBS/KG]	FAN QTY	CFM	DBA	FLIPSHELF QTY	FLIPSHELF UP "A"	FLIPSHELF DOWN "A"
L2LDC2CCMXX	NO	75 / 34	150 / 68	1	70	29	0	N/A	N/A
L2LDC2FCMXX	YES	75 / 34	150 / 68	1	70	29	1	51.00 [1295]	32.00 [813]

XX = KM = KNOTTED MAPLE FINISH
XX = GE = BLACK MEDINA
XX = GC = GRAINED DARK CHERRY FINISH

<div>PROJECTION: 3° ANGLE</div> <div></div> <div>SCALE = 3/64</div>		UNLESS OTHERWISE SPECIFIED, ALL DIMENSIONS ARE IN INCHES GENERAL TOLERANCES: DEC: 1 PLACE +/-0.1 ANGLE: +/-1° 2 PLACE +/-0.03 FRAC: +/-1/32 3 PLACE +/-0.010 HOLE SIZE: +/-0.002		APPROVALS		DATE		<div>TITLE</div> <div>96-01245 L2 SERIES</div> <div>--</div>		
				MODELED AP		02/27/17				
SIZE B	SHEET 1 OF 2	<div>Middle Atlantic Products, Inc</div>		DRAWN DDL		03/31/17		DWG NO.	96-01245_L2_SERIES	DWG REV C

THIS DRAWING CONTAINS TRADE INFORMATION DEEMED TO BE CONFIDENTIAL AND PROPRIETARY PROPERTY OF MIDDLE ATLANTIC PRODUCTS, INC. AND IS TO BE USED ONLY FOR THE PURPOSES FOR WHICH IT IS SUBMITTED AND FURTHER SHALL NOT BE COPIED IN WHOLE OR PART WITHOUT WRITTEN PERMISSION FIRST OBTAINED FROM MIDDLE ATLANTIC PRODUCTS, INC.

NOTE(S):
1. DIMENSIONS SHOWN IN FORMAT IN [MM]

A

B

C

D

E

