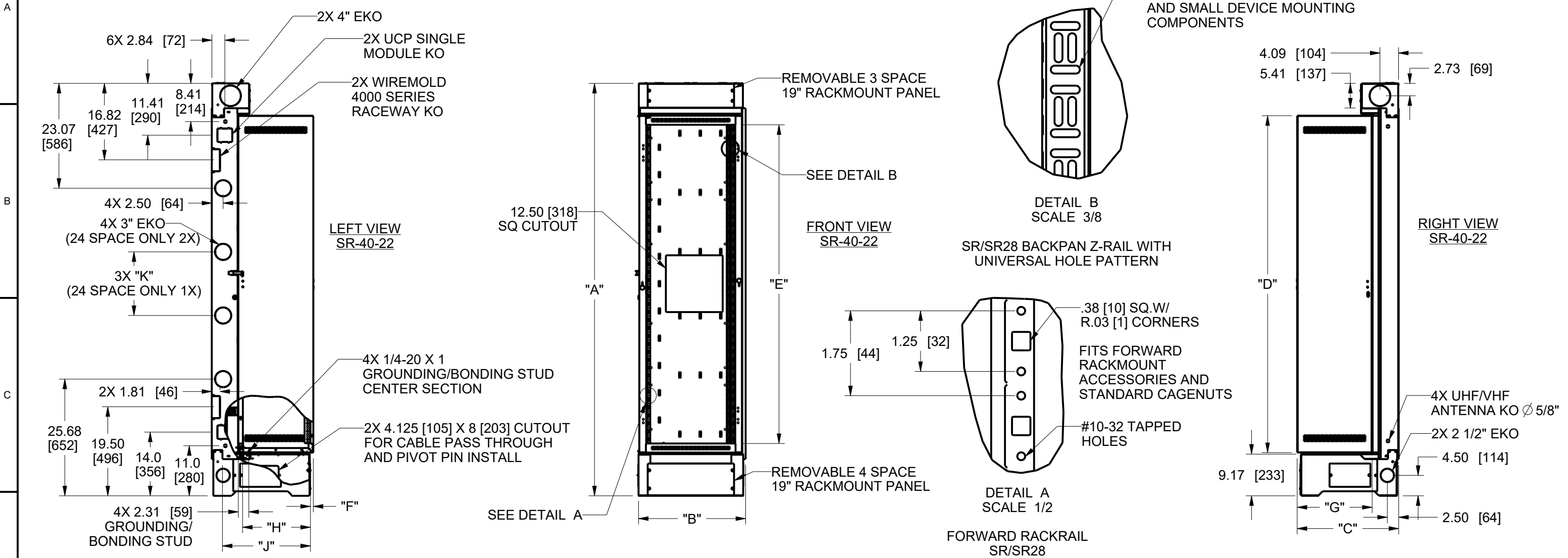


NOTE(S):
1) ALL DIMENSIONS IN FORMAT:
INCHES [MILLIMETERS]

REV	DESCRIPTION	REV BY	REV DATE	APP'D BY	DATE APP.
A	PRODUCTION RELEASE	///	////	JJP	07/23/21
B	EC-15387 - UPDATE FAN KNOCKOUT NOTE	SB	10/22/21	JMS	10/25/21
C	EC-15485 - ADDED EU FAN KIT	RA	05/11/22	JJP	05/11/22

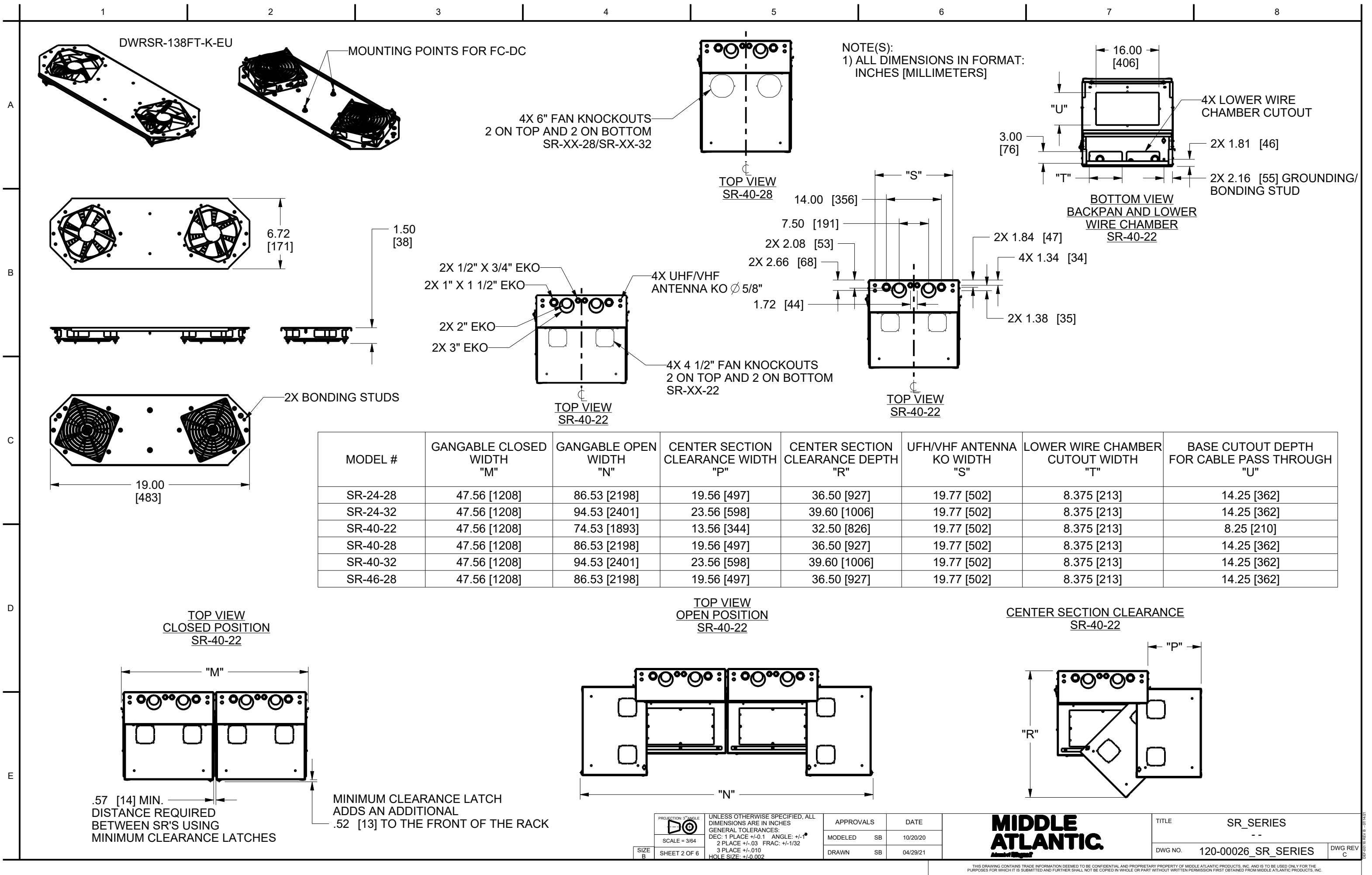


MODEL #	OVERALL HEIGHT "A"	OVERALL WIDTH "B"	OVERALL DEPTH "C"	CENTER SECTION HEIGHT "D"	RACKING HEIGHT "E"	RACK SPACES	FRONT RAIL SETBACK "F"	CENTER SECTION DEPTH "G"	RAIL TO RAIL DEPTH WHEN REAR MOUNTING IS REQUIRED * "H"	USABLE DEPTH OF EQUIPMENT "J"	3" EKO SPACING "K"
SR-24-28	62.75 [1594]	23.56 [598]	28.34 [720]	46.13 [1172]	42.00 [1067]	24 SPACES	.63 [16]	22.50 [571]	21.75 [552]	26.00 [660]	14.00 [356]
SR-24-32	62.75 [1594]	23.56 [598]	32.34 [821]	46.13 [1172]	42.00 [1067]	24 SPACES	.63 [16]	26.50 [673]	25.75 [654]	30.00 [762]	14.00 [356]
SR-40-22	90.75 [2305]	23.56 [598]	22.34 [567]	74.13 [1883]	70.00 [1778]	40 SPACES	.63 [16]	16.50 [419]	15.75 [400]	20.00 [508]	14.00 [356]
SR-40-28	90.75 [2305]	23.56 [598]	28.34 [720]	74.13 [1883]	70.00 [1778]	40 SPACES	.63 [16]	22.50 [571]	21.75 [552]	26.00 [660]	14.00 [356]
SR-40-32	90.75 [2305]	23.56 [598]	32.34 [821]	74.13 [1883]	70.00 [1778]	40 SPACES	.63 [16]	26.50 [673]	25.75 [654]	30.00 [762]	14.00 [356]
SR-46-28	101.25 [2572]	23.56 [598]	28.34 [720]	84.63 [2150]	80.50 [2045]	46 SPACES	.63 [16]	22.50 [571]	21.75 [552]	26.00 [660]	17.50 [445]

*NOTE: REAR RAIL IS OPTIONAL
MODEL# FWD-DWR-RR24, FWD-DWR-RR40, FWD-DWR-RR46

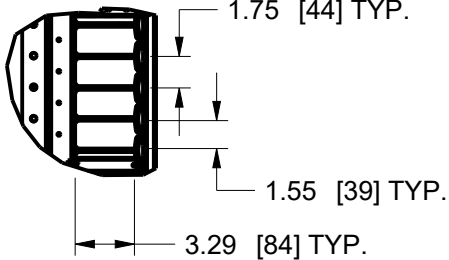
SIZE B	PROJECTION: 3" ANGLE 	UNLESS OTHERWISE SPECIFIED, ALL DIMENSIONS ARE IN INCHES GENERAL TOLERANCES: DEC: 1 PLACE +/-0.1 ANGLE: +/-1° 2 PLACE +/-0.03 FRAC: +/-1/32 3 PLACE +/-0.010 HOLE SIZE: +/-0.002	APPROVALS		DATE	MIDDLE ATLANTIC. <i>Middle Atlantic</i>	TITLE SR_SERIES --		
	MODELED SB		10/20/20	DWG NO.	120-00026_SR_SERIES		DWG REV C		
	DRAWN SB		04/29/21						

THIS DRAWING CONTAINS TRADE INFORMATION DEEMED TO BE CONFIDENTIAL AND PROPRIETARY PROPERTY OF MIDDLE ATLANTIC PRODUCTS, INC. AND IS TO BE USED ONLY FOR THE PURPOSES FOR WHICH IT IS SUBMITTED AND FURTHER SHALL NOT BE COPIED IN WHOLE OR PART WITHOUT WRITTEN PERMISSION FIRST OBTAINED FROM MIDDLE ATLANTIC PRODUCTS, INC.



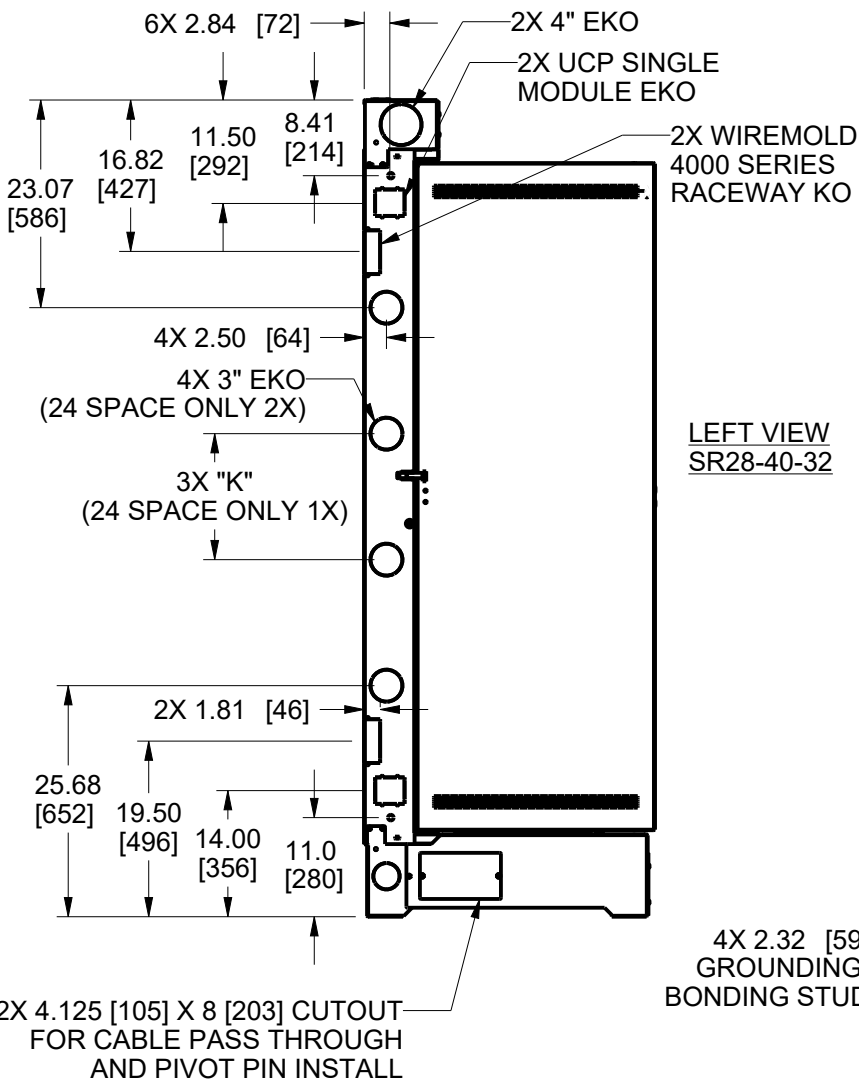
NOTE(S):
1) ALL DIMENSIONS IN FORMAT:
INCHES [MILLIMETERS]

DETAIL C
SCALE 3/32

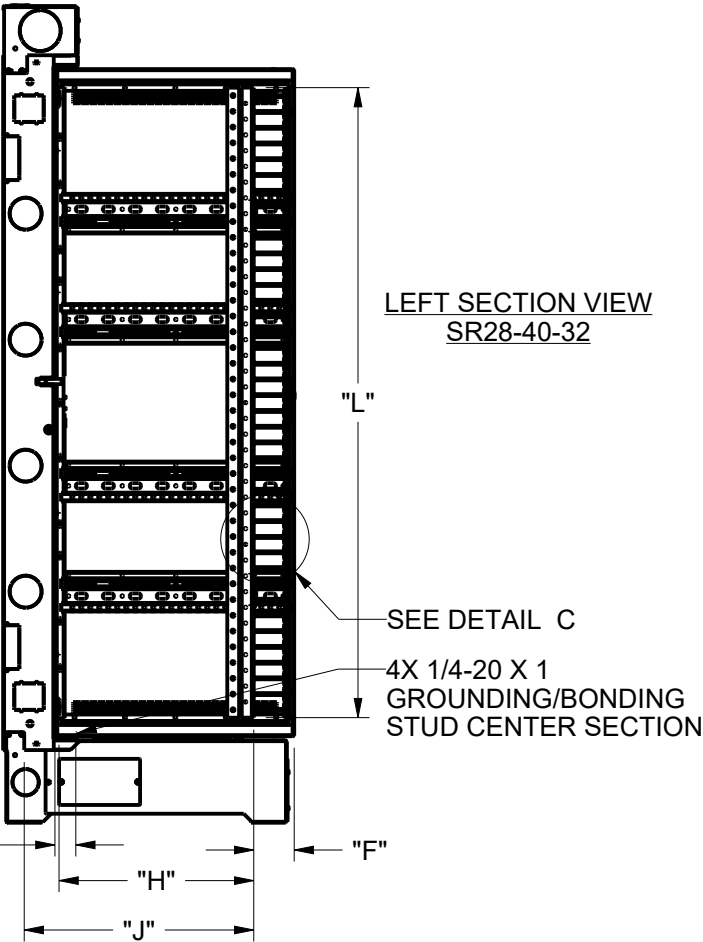


REMOVABLE 3 SPACE
19" RACKMOUNT PANEL

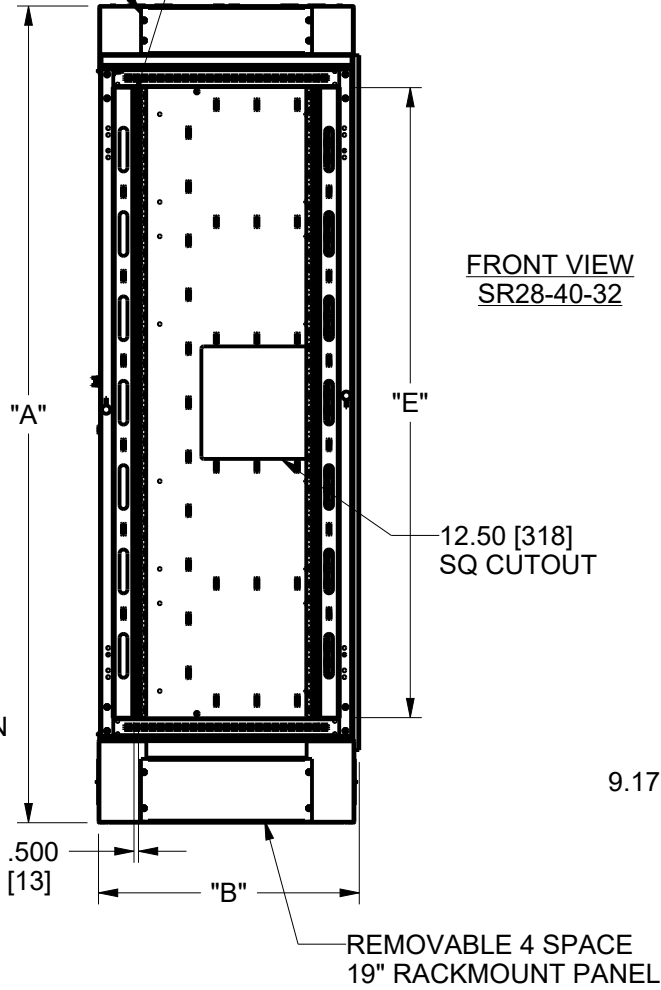
2X CABLE MANAGEMENT FINGERS
*ADDITIONAL REAR FINGER KIT OPTIONAL
MODEL #: SR28-IVCMF-24, SR28-IVCMF-40, SR28-IVCMF-46



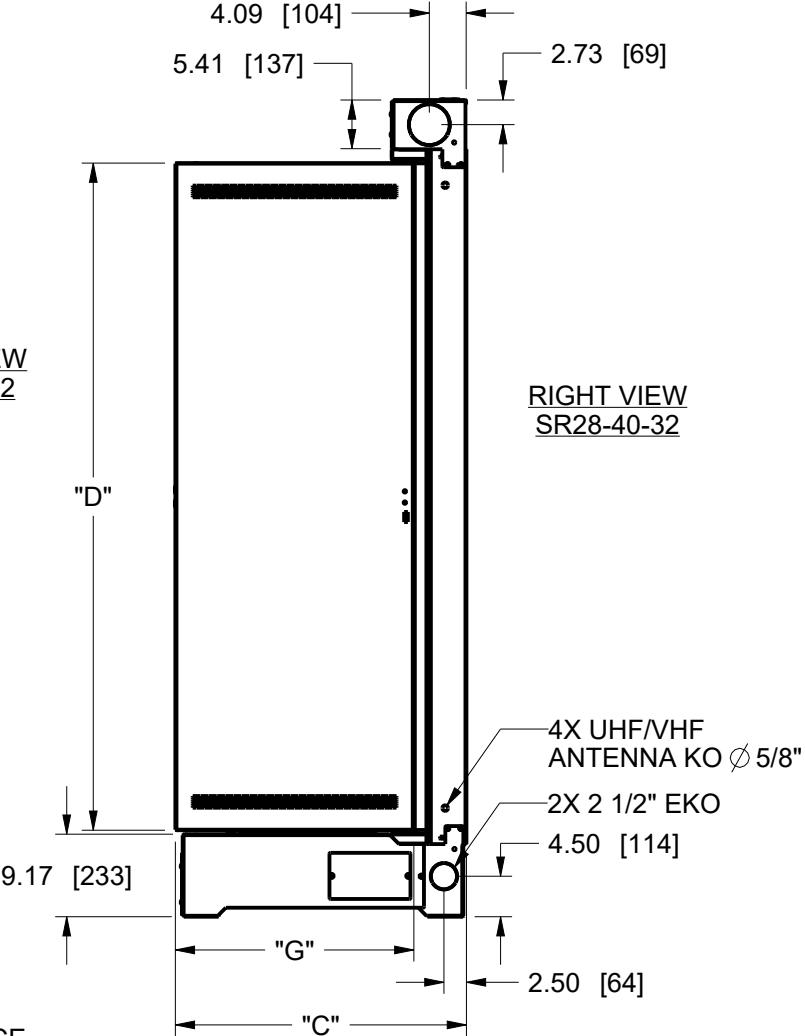
LEFT VIEW
SR28-40-32



LEFT SECTION VIEW
SR28-40-32



FRONT VIEW
SR28-40-32



RIGHT VIEW
SR28-40-32

MODEL #	OVERALL HEIGHT "A"	OVERALL WIDTH "B"	OVERALL DEPTH "C"	CENTER SECTION HEIGHT "D"	RACKING HEIGHT "E"	RACK SPACES	FRONT RAIL SETBACK "F"	CENTER SECTION DEPTH "G"	RAIL TO RAIL DEPTH WHEN REAR MOUNTING IS REQUIRED * "H"	USABLE DEPTH OF EQUIPMENT "J"	3" EKO SPACING "K"	CABLE MANAGEMENT FINGERS HEIGHT "L"
SR28-24-32	62.75 [1594]	28.97 [736]	32.34 [821]	46.13 [1172]	42.00 [1067]	24 SPACES	4.50 [114]	26.50 [673]	21.87 [555]	25.50 [648]	14.00 [356]	42.00 [1067]
SR28-40-32	90.75 [2305]	28.97 [736]	32.34 [821]	74.13 [1883]	70.00 [1778]	40 SPACES	4.50 [114]	26.50 [673]	21.87 [555]	25.50 [648]	14.00 [356]	69.93 [1776]
SR28-46-32	101.25 [2572]	28.97 [736]	32.34 [821]	84.63 [2150]	80.50 [2045]	46 SPACES	4.50 [114]	26.50 [673]	21.87 [555]	25.50 [648]	17.50 [445]	79.46 [2018]

*NOTE: REAR RAIL IS OPTIONAL
MODEL# FWD-SR28-RR24, FWD-SR28-RR40, FWD-SR28-RR46

PROJECTION: 3" ANGLE
SCALE = 3/64
SHEET 3 OF 6

UNLESS OTHERWISE SPECIFIED, ALL DIMENSIONS ARE IN INCHES
GENERAL TOLERANCES:
DEC: 1 PLACE +/-0.1 ANGLE: +/-1°
2 PLACE +/-0.03 FRAC: +/-1/32
3 PLACE +/-0.010
HOLE SIZE: +/-0.002

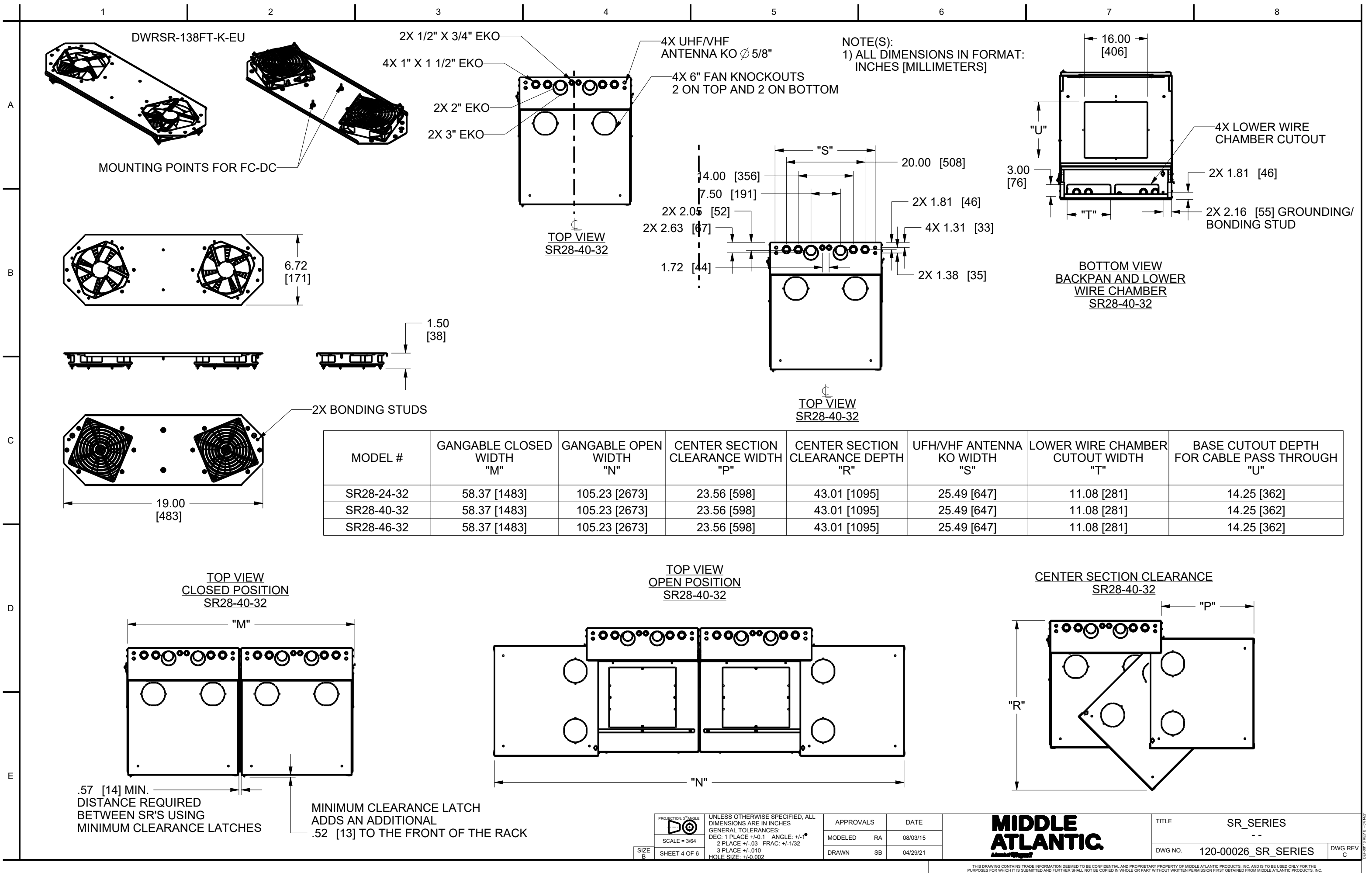
APPROVALS
MODELED SB
DRAWN SB

DATE
06/17/20
04/29/21

MIDDLE ATLANTIC
Model of Design

TITLE
SR_SERIES
--
DWG NO. 120-00026_SR_SERIES
DWG REV C

THIS DRAWING CONTAINS TRADE INFORMATION DEEMED TO BE CONFIDENTIAL AND PROPRIETARY PROPERTY OF MIDDLE ATLANTIC PRODUCTS, INC. AND IS TO BE USED ONLY FOR THE PURPOSES FOR WHICH IT IS SUBMITTED AND FURTHER SHALL NOT BE COPIED IN WHOLE OR PART WITHOUT WRITTEN PERMISSION FIRST OBTAINED FROM MIDDLE ATLANTIC PRODUCTS, INC.



NOTE(S):
1) ALL DIMENSIONS IN FORMAT:
INCHES [MILLIMETERS]

REAR VIEW
BACKPAN MOUNTING HOLES
SR-40-22

CENTER SECTION
PIVOT SIDE

6X \varnothing .41 [10]
MOUNTING HOLES

CENTER SECTION
SWING SIDE

REAR VIEW
BACKPAN MOUNTING HOLES
SR28-40-32

8X \varnothing .41 [10]
MOUNTING HOLES

CENTER SECTION
SWING SIDE

MODEL NUMBER	WALL MOUNT HOLE SPACING PIVOT SIDE "V"	WALL MOUNT HOLE SPACING SWING SIDE "W"	TOP OF SQ CUTOUT TO TOP OF RACK "X"	BOTTOM OF SQ CUTOUT TO BOTTOM OF RACK "Y"
SR-24-28	14.50 [368]	43.50 [1105]	23.82 [605]	26.43 [671]
SR-24-32	14.50 [368]	43.50 [1105]	23.82 [605]	26.43 [671]
SR-40-22	23.88 [606]	71.63 [1819]	37.82 [961]	40.43 [1027]
SR-40-28	23.88 [606]	71.63 [1819]	37.82 [961]	40.43 [1027]
SR-40-32	23.88 [606]	71.63 [1819]	37.82 [961]	40.43 [1027]
SR-46-28	27.38 [695]	82.13 [2086]	43.07 [1094]	45.68 [1160]
SR28-24-32	14.50 [368]	43.50 [1105]	23.82 [605]	26.43 [671]
SR28-40-32	23.88 [606]	71.63 [1819]	37.82 [961]	40.43 [1027]
SR28-46-32	27.38 [695]	82.13 [2086]	43.07 [1094]	45.68 [1160]



SCALE = 5/64

UNLESS OTHERWISE SPECIFIED, ALL
DIMENSIONS ARE IN INCHES
GENERAL TOLERANCES:
DEC: 1 PLACE +/-0.1 ANGLE: +/-1°
2 PLACE +/-0.3 FRAC: +/-1/32
3 PLACE +/-0.010
HOLE SIZE: +/-0.002

APPROVALS

DATE

MODELED SB

10/20/20

DRAWN SB

04/29/21

**MIDDLE
ATLANTIC**
Middle Atlantic

TITLE SR_SERIES

--

DWG NO. 120-00026_SR_SERIES

DWG REV
C

THIS DRAWING CONTAINS TRADE INFORMATION DEEMED TO BE CONFIDENTIAL AND PROPRIETARY PROPERTY OF MIDDLE ATLANTIC PRODUCTS, INC. AND IS TO BE USED ONLY FOR THE PURPOSES FOR WHICH IT IS SUBMITTED AND FURTHER SHALL NOT BE COPIED IN WHOLE OR PART WITHOUT WRITTEN PERMISSION FIRST OBTAINED FROM MIDDLE ATLANTIC PRODUCTS, INC.

NOTE(S):
1) ALL DIMENSIONS IN FORMAT:
INCHES [MILLIMETERS]

OPTIONAL SUB-PLATE MOUNTING KIT
MODEL # SR-SUB

EACH SR-SUB ALLOWS FOR THE
MOUNTING OF UP TO (4) 89-D
TYPE BRACKETS. (4) 1900 BOXES
OR (1) RACO 3 GANG BOX.
HARDWARE INCLUDED.

MOUNT UP TO 4 SR-SUB
(2 FOR 24 SPACE MODELS)
SUB-PLATE MOUNTING KITS
TO EACH SR BACKPAN USING
MOUNTING HOLES AND INCLUDED
HARDWARE. (SHOWN WITH MAIN
BODY OF ENCLOSURE REMOVED
FOR CLARITY)

WITH THE USE OF OPTIONAL
COMPONENTS - LL-DWR/SR-BP
BACKPAN BECOMES COMPATIBLE
WITH 17" (DETAIL D) AND
21" (DETAIL E) LEVERLOCK
COMPONENTS

SHOWN WITH
OPTIONAL MINIMUM
CLEARANCE LATCH
INSTALLED MODEL # DWRSR-ZL

SR/SR28 TRIM STRIP:
FITS VERTICAL POWER STRIPS -
REFERENCE THE COMPATIBLE
POWER STRIP MODELS FOR YOUR
SPECIFIC SIZE ENCLOSURE AT
WWW.LEGRANDAV.COM

SHOWN WITH PRE-INSTALLED
CABLE FINGERS (SR28 MODELS ONLY),
OPTIONAL REAR FINGER KIT
ALSO AVAILABLE
MODEL# SR28-IVCMF-24,
SR28-IVCMF-40, SR28-IVCMF-46

SR/SR28 RACKRAIL BRACKET:
VERTICAL LEVERLOCK
COMPATIBILITY:
24SP - 21" LEVERLOCK PANELS
40SP - 17" LEVERLOCK PANELS
46SP - 21" LEVERLOCK PANELS

SR-40-22

SR-40-22

SR28-40-32

DETAIL D
17" LEVERLOCK PANEL
USING LL-DWR/SR-BP OPTION

DETAIL E
21" LEVERLOCK PANEL
USING LL-DWR/SR-BP OPTION

SIZE B	PROJECTION: 3" ANGLE SCALE = 5/64
	SHEET 6 OF 6

UNLESS OTHERWISE SPECIFIED, ALL
DIMENSIONS ARE IN INCHES
GENERAL TOLERANCES:
DEC: 1 PLACE +/-0.1 ANGLE: +/-1°
2 PLACE +/-0.03 FRAC: +/-1/32
3 PLACE +/-0.010
HOLE SIZE: +/-0.002

APPROVALS	DATE
MODELED SB	10/20/20
DRAWN SB	04/29/21

**MIDDLE
ATLANTIC**

TITLE SR_SERIES	
DWG NO.	120-00026_SR_SERIES
DWG REV	C