

A

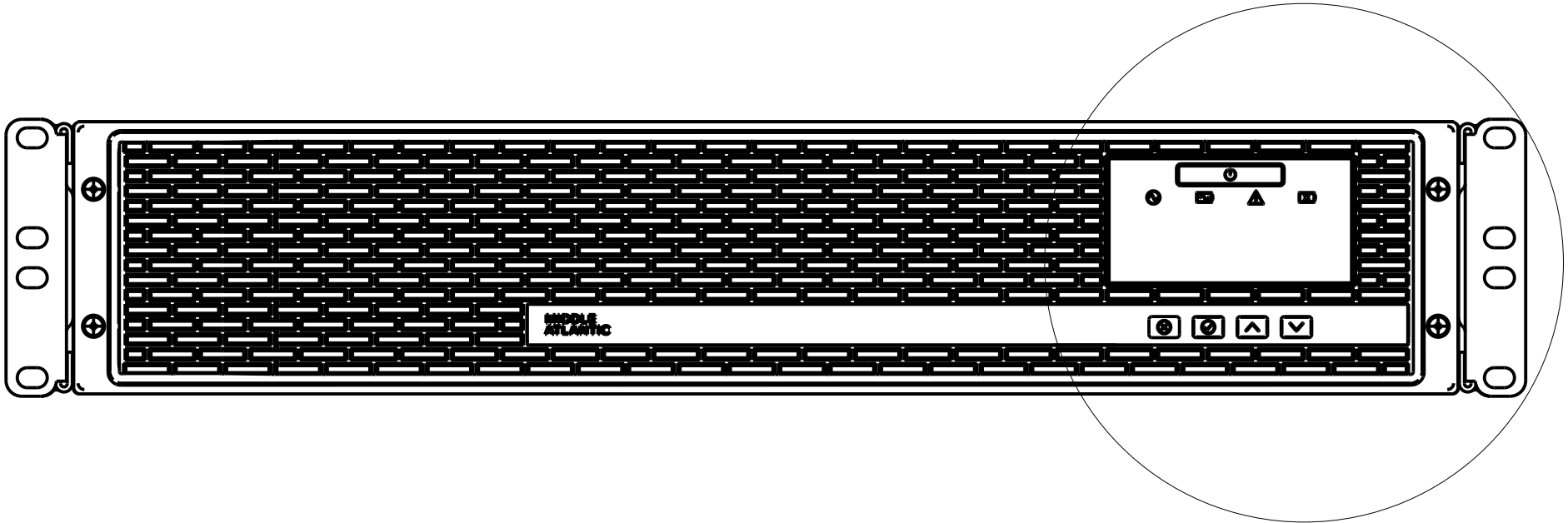
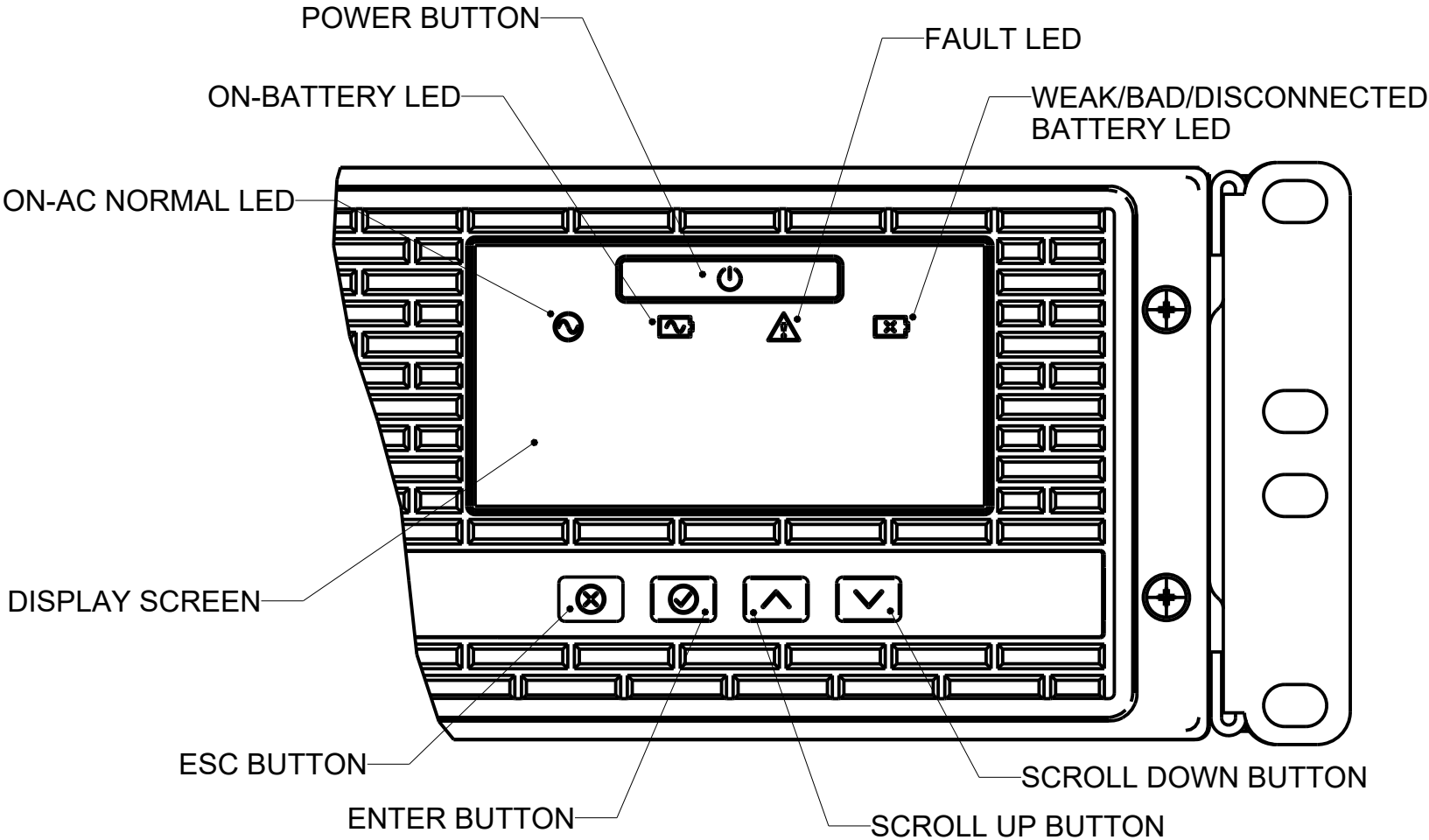
B

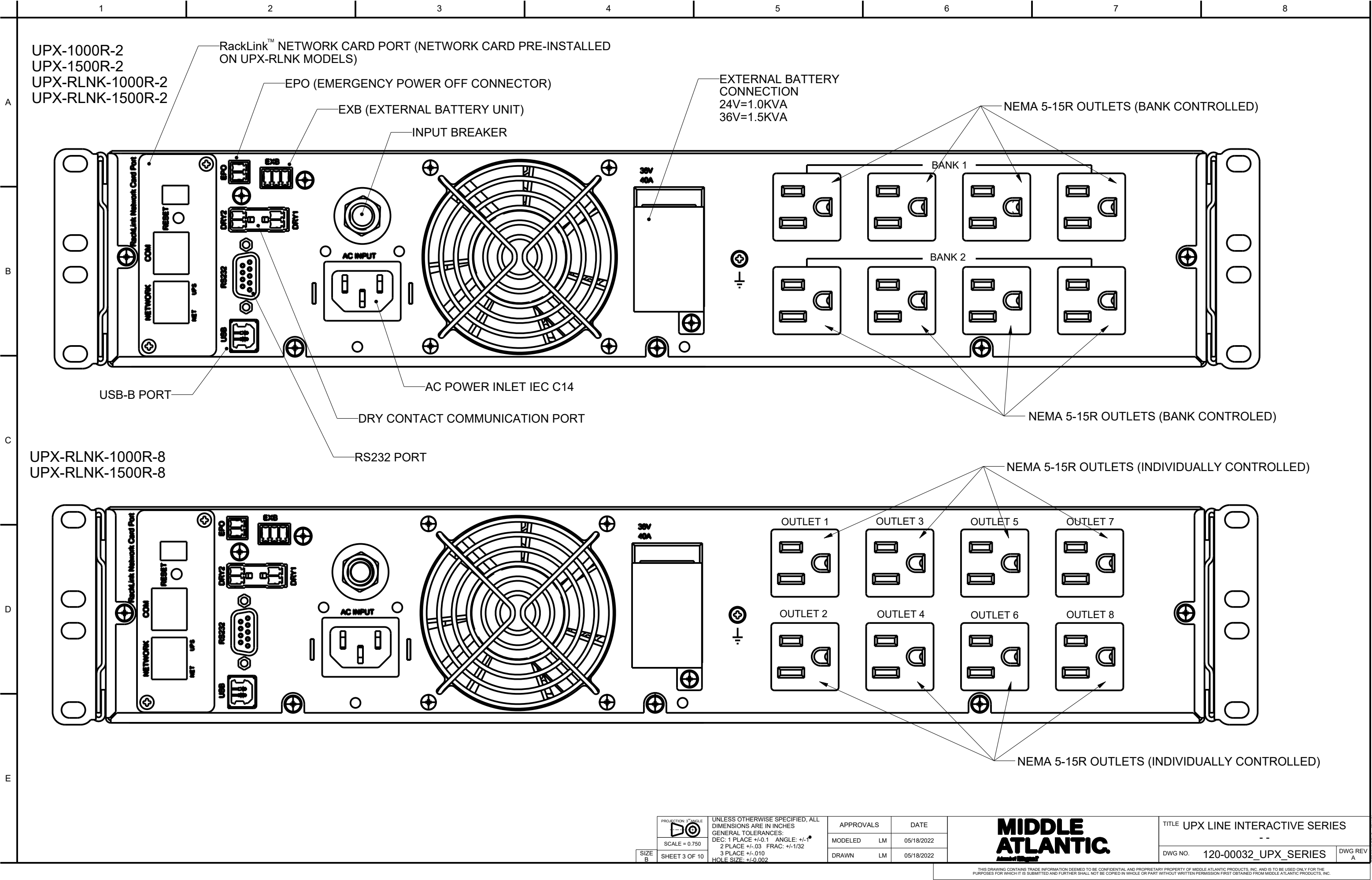
C

D

E

MODEL#	TITLE
UPX-1000R-2	1000VA 120V UPS LOCAL BANK CONTROL
UPX-1500R-2	1500VA 120V UPS LOCAL BANK CONTROL
UPX-2000R-2	2000VA 120V UPS LOCAL BANK CONTROL
UPX-RLNK-1000R-2	1000VA 120V UPS RLNK BANK CONTROL
UPX-RLNK-1500R-2	1500VA 120V UPS RLNK BANK CONTROL
UPX-RLNK-2000R-2	2000VA 120V UPS RLNK BANK CONTROL
UPX-RLNK-1000R-8	1000VA 120V UPS RLNK OUTLET CONTROL
UPX-RLNK-1500R-8	1500VA 120V UPS RLNK OUTLET CONTROL
UPX-RLNK-2000R-8	2000VA 120V UPS RLNK OUTLET CONTROL





SIZE B	PROJECTION: 3" ANGLE
	SCALE = 0.750
SHEET 3 OF 10	

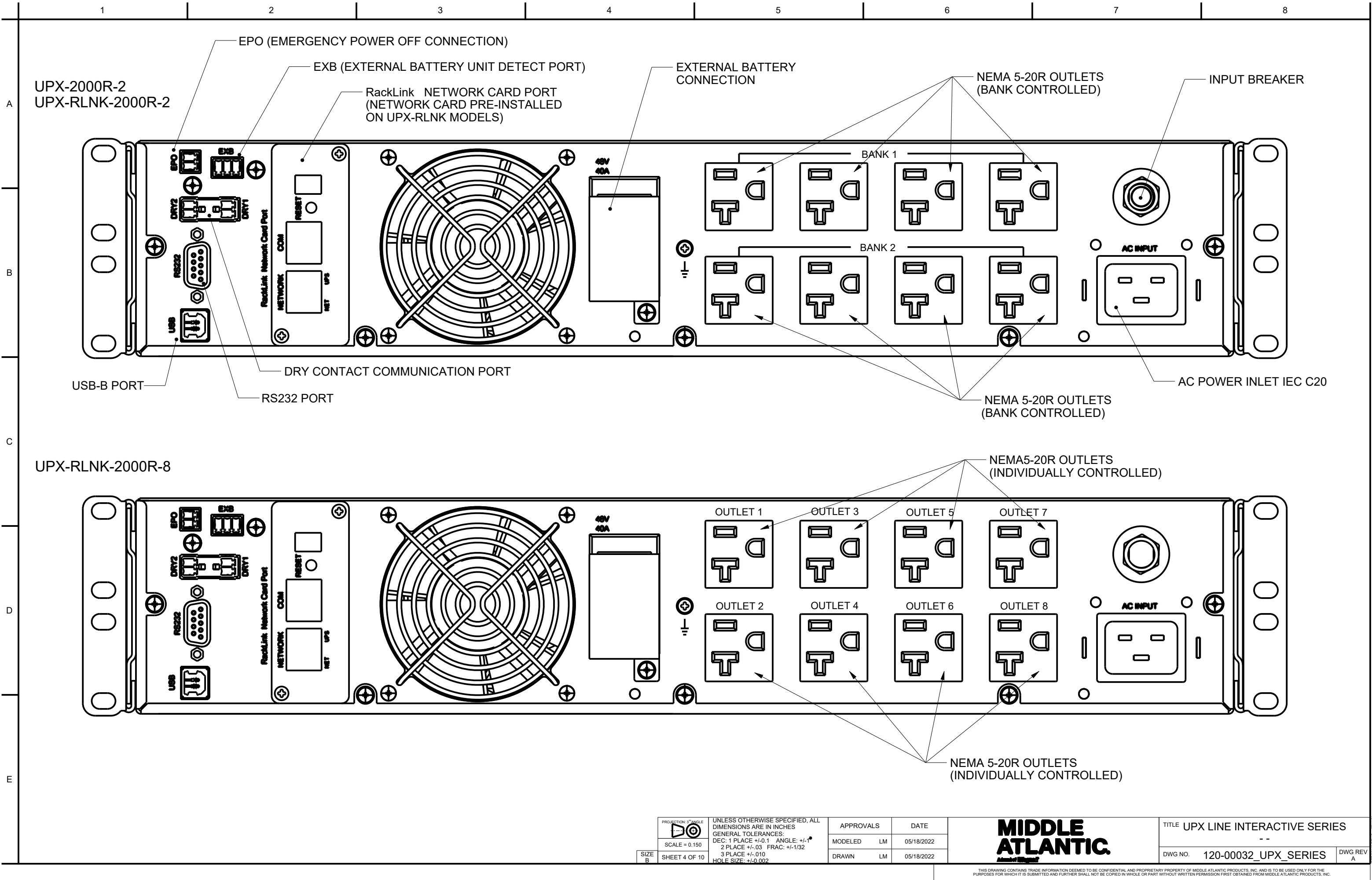
UNLESS OTHERWISE SPECIFIED, ALL
DIMENSIONS ARE IN INCHES
GENERAL TOLERANCES:
DEC: 1 PLACE +/-0.1 ANGLE: +/-1°
2 PLACE +/-0.03 FRAC: +/-1/32
3 PLACE +/-0.010
HOLE SIZE: +/-0.002

APPROVALS		DATE
MODELED	LM	05/18/2022
DRAWN	LM	05/18/2022

**MIDDLE
ATLANTIC**

TITLE UPX LINE INTERACTIVE SERIES --		
DWG NO.	120-00032_UPX_SERIES	DWG REV A

THIS DRAWING CONTAINS TRADE INFORMATION DEEMED TO BE CONFIDENTIAL AND PROPRIETARY PROPERTY OF MIDDLE ATLANTIC PRODUCTS, INC. AND IS TO BE USED ONLY FOR THE PURPOSES FOR WHICH IT IS SUBMITTED AND FURTHER SHALL NOT BE COPIED IN WHOLE OR PART WITHOUT WRITTEN PERMISSION FIRST OBTAINED FROM MIDDLE ATLANTIC PRODUCTS, INC.



PROJECTION: 1" ANGLE	
SCALE = 0.150	
SIZE B	SHEET 4 OF 10

UNLESS OTHERWISE SPECIFIED, ALL DIMENSIONS ARE IN INCHES
GENERAL TOLERANCES:
DEC: 1 PLACE +/-0.1 ANGLE: +/-1°
2 PLACE +/-0.03 FRAC: +/-1/32
3 PLACE +/-0.010
HOLE SIZE: +/-0.002

APPROVALS		DATE
MODELED	LM	05/18/2022
DRAWN	LM	05/18/2022

MIDDLE ATLANTIC

TITLE UPX LINE INTERACTIVE SERIES		

DWG NO.	120-00032_UPX_SERIES	DWG REV A

THIS DRAWING CONTAINS TRADE INFORMATION DEEMED TO BE CONFIDENTIAL AND PROPRIETARY PROPERTY OF MIDDLE ATLANTIC PRODUCTS, INC. AND IS TO BE USED ONLY FOR THE PURPOSES FOR WHICH IT IS SUBMITTED AND FURTHER SHALL NOT BE COPIED IN WHOLE OR PART WITHOUT WRITTEN PERMISSION FIRST OBTAINED FROM MIDDLE ATLANTIC PRODUCTS, INC.

MODEL#	TITLE	MINIMUM USEABLE DEPTH "A"	CHASSIS DEPTH "B"	REAR MOUNTING RANGE "C"	AMPERAGE RATING
UPX-EXPANRUN-10-15	UPS EXPAND RUNTIME UNIT 1KVA & 1.5KVA	22 [559]	16 [406]	20-36 [508-915]	15AMP
UPX-EXPANRUN-20	UPS EXPAND RUNTIME UNIT 2KVA	28 [711]	22 [559]	20-36 [508-915]	20AMP

ALL UNITS IN INCHES [MM]

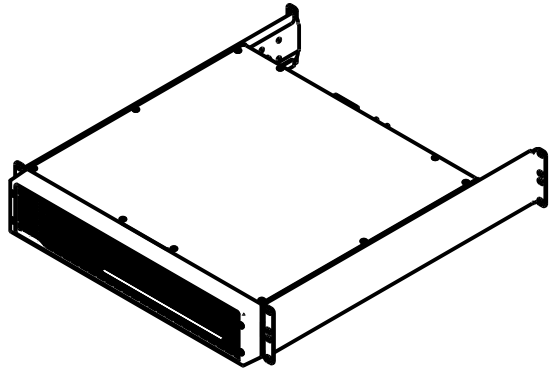
A

B

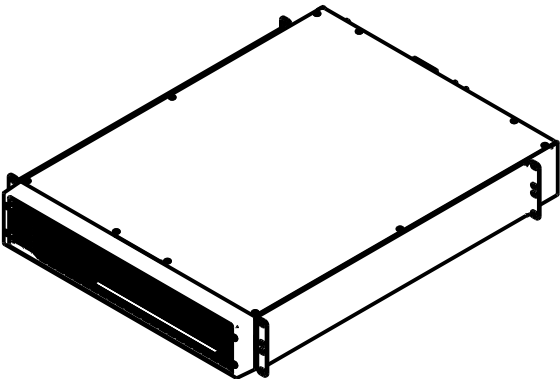
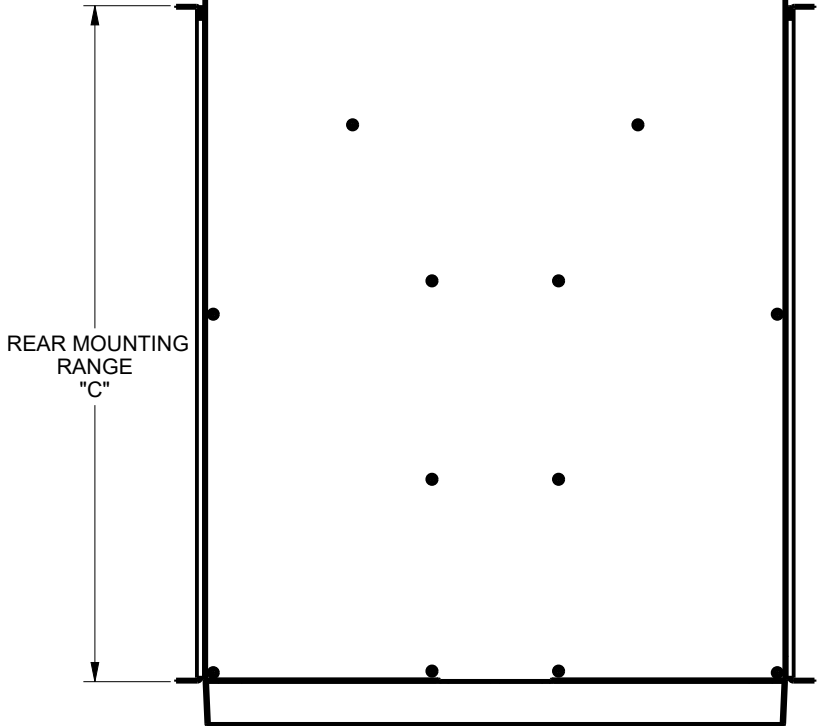
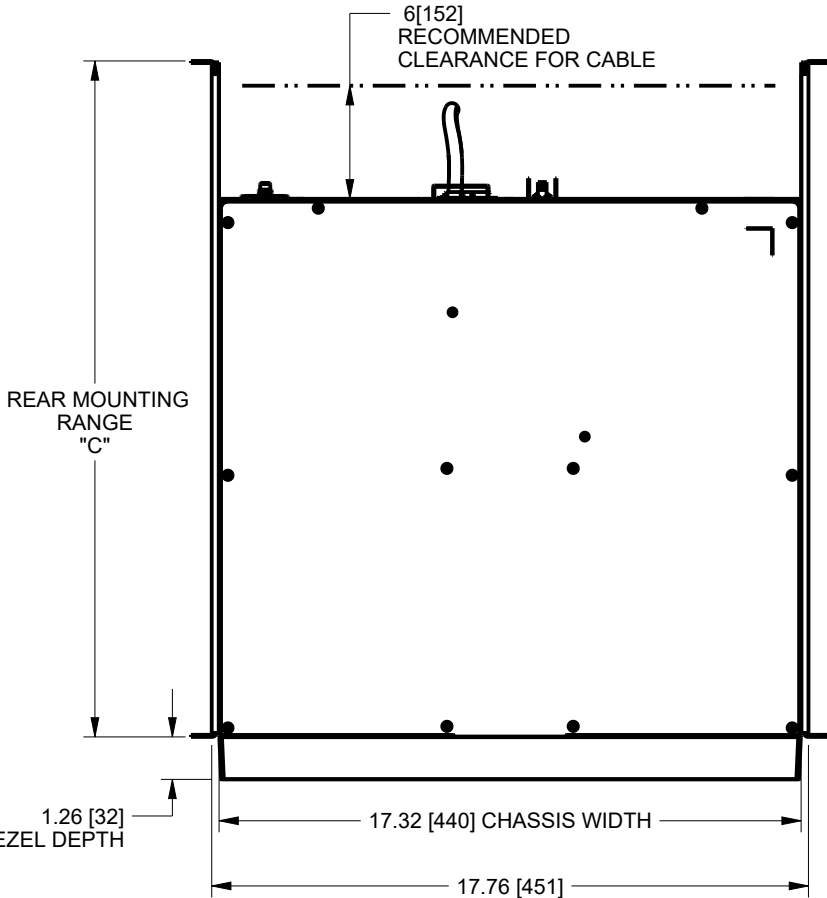
C

D

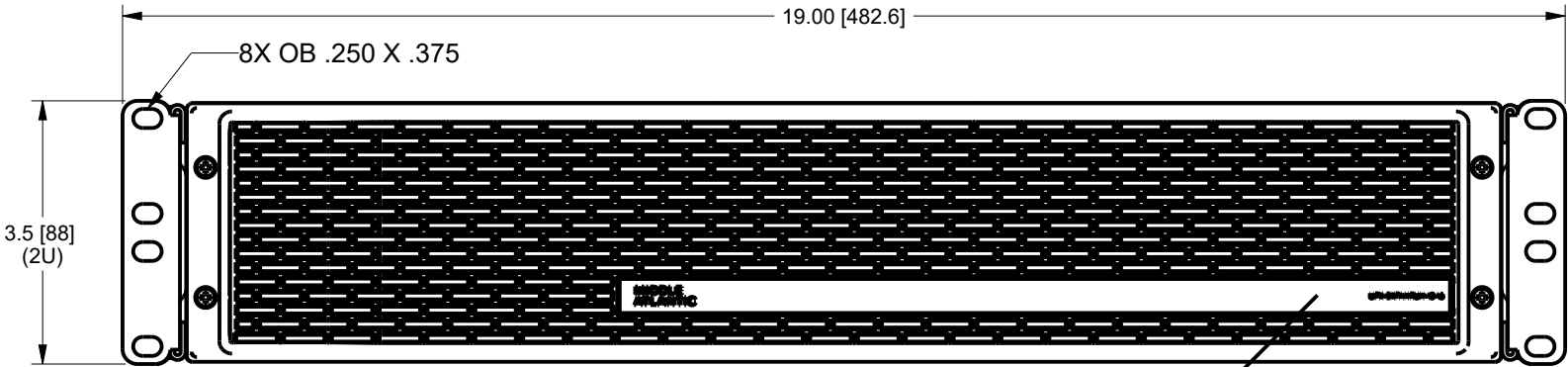
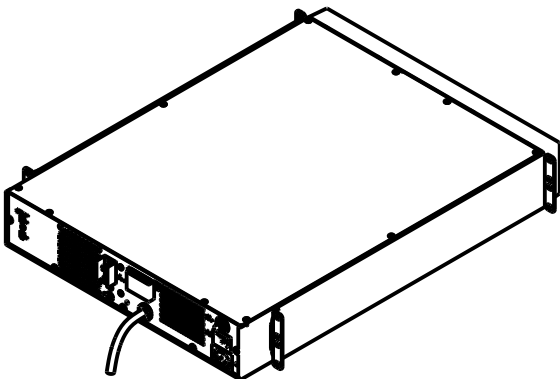
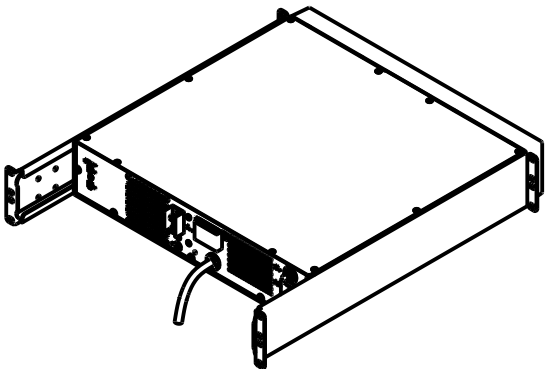
E



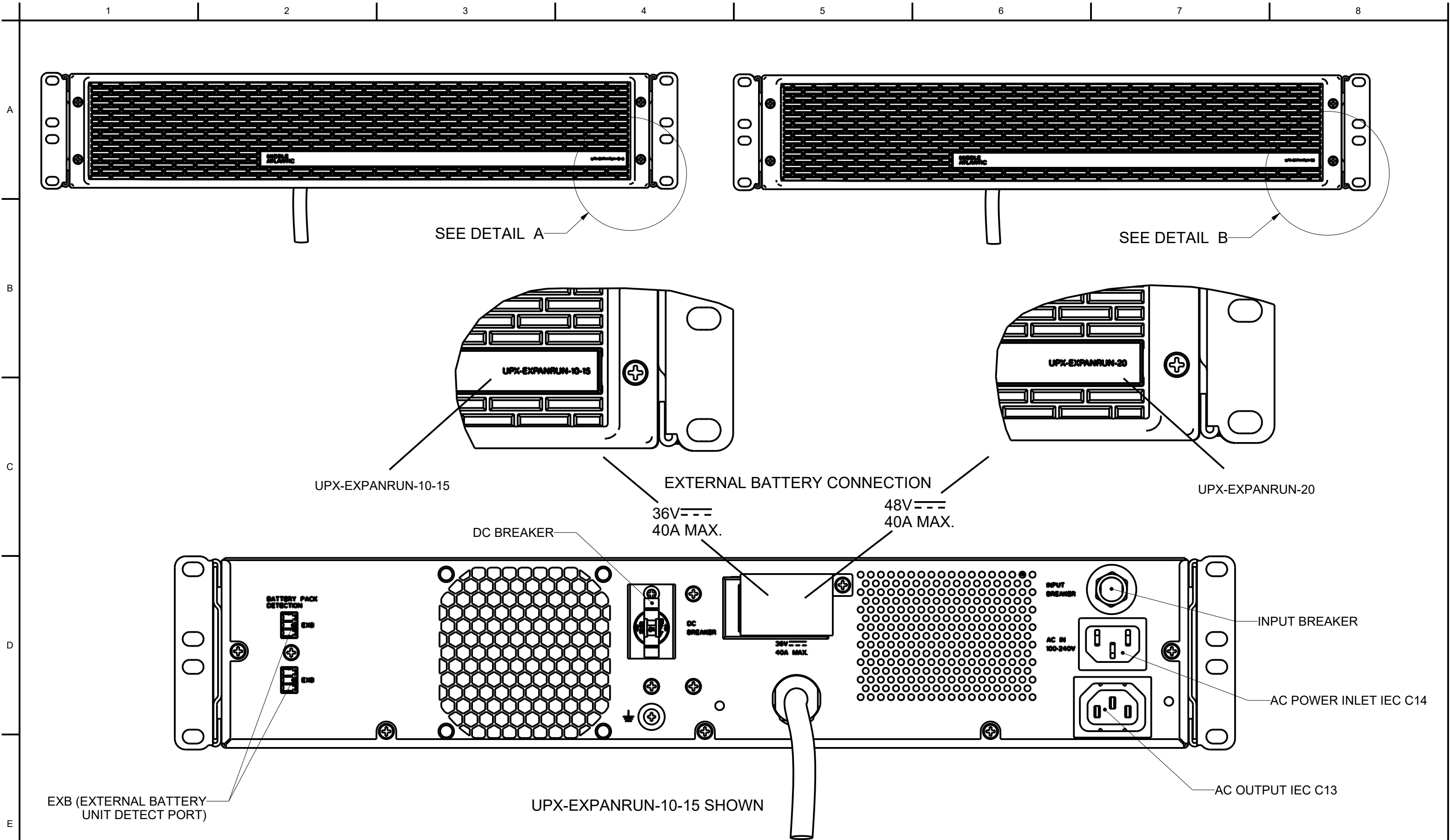
UPX-EXPANRUN-10-15



UPX-EXPANRUN-20



UPX-EXPANRUN-10-15
UPX-EXPANRUN-20



SIZE B	PROJECTION: 3" ANGLE  SCALE = 0.313 SHEET 6 OF 10	UNLESS OTHERWISE SPECIFIED, ALL DIMENSIONS ARE IN INCHES GENERAL TOLERANCES: DEC: 1 PLACE +/-0.1 ANGLE: +/-1° 2 PLACE +/-0.03 FRAC: +/-1/32 3 PLACE +/-0.010 HOLE SIZE: +/-0.002		APPROVALS		DATE	<div>MIDDLE ATLANTIC</div> <div><small>Middle Atlantic Products, Inc.</small></div>	TITLE UPX LINE INTERACTIVE SERIES	
				MODELED LM		05/18/2022		--	
				DRAWN LM		05/18/2022		DWG NO. 120-00032_UPX_SERIES	DWG REV A

THIS DRAWING CONTAINS TRADE INFORMATION DEEMED TO BE CONFIDENTIAL AND PROPRIETARY PROPERTY OF MIDDLE ATLANTIC PRODUCTS, INC. AND IS TO BE USED ONLY FOR THE PURPOSES FOR WHICH IT IS SUBMITTED AND FURTHER SHALL NOT BE COPIED IN WHOLE OR PART WITHOUT WRITTEN PERMISSION FIRST OBTAINED FROM MIDDLE ATLANTIC PRODUCTS, INC.

	1	2	3	4	5	6	7	8	
A	NEXSYS Line Interactive UPS								
	Model	UPX-1000R-2 UPX-RLNK-1000R-2 UPX-RLNK-1000R-8	UPX-1500R-2 UPX-RLNK-1500R-2 UPX-RLNK-1500R-8	UPX-2000R-2 UPX-RLNK-2000R-2 UPX-RLNK-2000R-8					
B	UPS Topology	Line Interactive							
	VA	1000VA	1500VA	2000VA					
	Watts	900W	1350W	1800W					
	Power Factor	0.9							
C	Input								
	Nominal Voltage	120 Vac							
	Voltage Range	80 - 158 Vac							
	Frequency	50/60Hz Autosensing							
D	Sensitivity	Adjustable for Generator application							
	Input Power cord type	SignalSAFE IEC to 5-15P 6' (1.83M)				SignalSAFE IEC to 5-20P 6' (1.83M)			
	Output								
	Waveform on Battery	Pure Sine Wave							
E	Voltage Regulation	90Vac min – 146Vac max							
	Double Boost	105Vac and 90Vac							
	Double Buck	130Vac and 146Vac							
	Nominal Voltage (Battery Mode)	120 Vac ±5%							
F	Selectable Battery Voltage	110/120/127 Vac ±5% (Note: 110Vac selection derates UPS to 90%)							
	On Battery Frequency	50 Hz or 60 Hz ± 0.5 Hz							
	No. of Outlets	8							
	Outlet type	NEMA 5-15R				NEMA 5-20R			
G	Surge Protection	1000 joules							
	Overload Protection	Circuit Breaker							
	Transfer Time	Typical: 4ms Max: 6-10ms							
	Fan / Audible Noise	45dB @ 1m variable speed fan				50dB @ 1m variable speed fan			
H	Crest Ratio	3:1							
	Harmonic Distortion	5% max @ 100% linear load, 12% max @ 100% non-linear load							
	BTUs (Line Mode)	70	105	140					
	BTUs (Battery Mode)	495	750	990					
I	Full -Load Run Time	4 minutes	3 minutes	3 minutes					
	Half Load Run Time	13 minutes	10 minutes	10 minutes					
		PROJECTION: 3rd ANGLE SCALE = 0.125 SHEET 7 OF 10		UNLESS OTHERWISE SPECIFIED, ALL DIMENSIONS ARE IN INCHES GENERAL TOLERANCES: DEC: 1 PLACE +/-0.1 ANGLE: +/-1° 2 PLACE +/-0.03 FRAC: +/-1/32 3 PLACE +/-0.010 HOLE SIZE: +/-0.002		APPROVALS MODELED LM 05/18/2022 DRAWN LM 05/18/2022		DATE 05/18/2022	
		MIDDLE ATLANTIC		TITLE UPX LINE INTERACTIVE SERIES -- DWG NO. 120-00032_UPX_SERIES		DWG REV A		20250518 09:59:30 AM	

	1	2	3	4	5	6	7	8
A	Weight							
	Product Weight	44.1 lbs. (20kg)			63.05 lbs. (28.6kg)			
	Shipping Weight	54 lbs. (24.5kg)			71 lbs. (32.2kg)			
	Certifications							
B	Safety Standards		cTUVus Tested to UL 1778 & CAN CSA-C22.2 standards					
	EMI Standards		FCC Class A					
	Environmental		RoHS 3 / REACH Compliant					
	Energy Efficiency		Energy Star 2.0					
	Features							
	Load Shedding		Yes					
C	Site fault detection		Yes					
	Cold Start		Yes					
	Warranty Standard		3 Years Limited (2Years Battery) For warranty information, refer to legrandav.com/policies/warranty_information					
D	Continue on sheet 8 for NEXSYS Line Interactive UPS Expandable Runtime Battery Option (EBR)							
E								
								</

1

2

3

4

5

6

7

8

A

NEXSYS Line Interactive UPS Expandable Runtime Battery Option (EBR)

Model	UPX-EXPANRUN-10-15		UPX-EXPANRUN-20
UPS + 1 ERB Full Load/Half Load runtime	23/55 minutes	12/37 minutes	17/42 minutes
UPS + 2 ERB Full Load/Half Load runtime	43/105 minutes	28/74 minutes	33/83 minutes
UPS + 3 ERB Full Load/Half Load runtime	68/164 minutes	43/111 minutes	50/135 minutes
UPS + 4 ERB Full Load/Half Load runtime	93/222 minutes	60/154 minutes	71/178 minutes
Battery			
Recharge time	6-8hrs		
Battery Maintenance	Hot Swappable Front Access		
Battery Pack Voltage	36VDC	48VDC	
Battery Pack Details	(3) 12V 7Ah Sealed Maintenance Free Lead Acid Batteries	(4) 12V 9Ah Sealed Maintenance Free Lead Acid Batteries. Stacked	
Replacement Battery Part Number	UPX-RPLBATT-A (requires two)	UPX-RPLBATT-D (requires two)	
Dimensions			
Width x Height x Depth	17.3" (440mm) x 3.4" (86.5mm) x 17.3" (440mm)		17.3" (440mm) x 3.4" (86.5mm) x 23.6" (600mm)
Weight			
Product Weight	52.0 lbs. (23.6kg)		70.1 lbs. (31.8kg)
Shipping Weight	58.4 lbs. (26.5kg)		78.5 lbs. (35.6kg)
Certifications			
Safety Standards	cTUVus Tested to UL 1778 & CAN CSA-C22.2 standards		
EMI Standards	FCC Class A		
Environmental	RoHS 3 / REACH Compliant		

E

Warranty Standard

3 Years Limited (2Years Battery)
For warranty information, refer to [legrandav.com/policies/warranty_information](https://www.legrandav.com/policies/warranty_information)

PROJECTION: 1st ANGLE

SCALE = 0.125

SHEET 10 OF 10

UNLESS OTHERWISE SPECIFIED, ALL DIMENSIONS ARE IN INCHES

GENERAL TOLERANCES:

DEC: 1 PLACE +/-0.1 ANGLE: +/-1°

2 PLACE +/-0.3 FRAC: +/-1/32

3 PLACE +/-0.010

HOLE SIZE: +/-0.002

APPROVALS

DATE

MODELED LM 05/18/2022

DRAWN LM 05/18/2022

MIDDLE ATLANTIC

AVANCE YOUR BUSINESS

TITLE UPX LINE INTERACTIVE SERIES

--

DWG NO. 120-00032_UPX_SERIES

DWG REV A

THIS DRAWING CONTAINS TRADE INFORMATION DEEMED TO BE CONFIDENTIAL AND PROPRIETARY PROPERTY OF MIDDLE ATLANTIC PRODUCTS, INC. AND IS TO BE USED ONLY FOR THE PURPOSES FOR WHICH IT IS SUBMITTED AND FURTHER SHALL NOT BE COPIED IN WHOLE OR PART WITHOUT WRITTEN PERMISSION FIRST OBTAINED FROM MIDDLE ATLANTIC PRODUCTS, INC.