

P3TEC

advanced wall protection



baresque

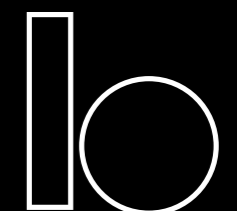
worldwide

e info@baresque.com.au

p 1300 306 399

baresque.com.au

THE INTERIOR
DESIGNER'S DESTINATION



baresque



INDEX

The technical innovation of P3TEC debuts in a beautiful wall protection collection with three key advantages:

- Performance
- Easy to Use
- Design

Bring the look of silk, linen and wovens to high-traffic, high-abuse areas in healthcare, food service, transportation and more.



Performance	4
Easy to Use	6
Design	8
Corner Guard	18
Specifications	20

Performance



Chemical Resistant

Protected with a cap film, P3TEC resists surface damage from the harshest chemicals and staining agents. Spray paint, permanent markers and more can be easily removed, leaving P3TEC unblemished and unstained.



Impact Resistant

P3TEC is engineered to withstand an impact force much greater than other wallcovering and wall protection products. P3TEC retains key advantages of physical flexibility and provides superior resistance to damage from carts and other moving objects.



Abrasion Resistant

To protect against surface damage from contact with items like chair backs and wheeled devices, P3TEC provides exceptional abrasion resistance.

Easy to Use



By the Roll

Compared to 2440mm x 1220mm rigid sheets, P3TEC ships, handles and installs easily, in 13.5m rolls, with no need to lay flat until ready to install.



Seamless Covering

Give your walls a full-height, continuous look. No need to install rigid sheets horizontally, and no caulk, reveals or connection pieces are required. The only accessory you need is coordinating corner guards for outside corners.

1. Prep



2. Cut



3. Adhesive



4. Trim



Installation

Using techniques from Type II wallcovering, P3TEC installs simply with wallcovering adhesive, and is easily trimmed around permanent fixtures. P3TEC is strippable and can be removed years later without destroying the drywall.

Contact Baresque for installation instructions.

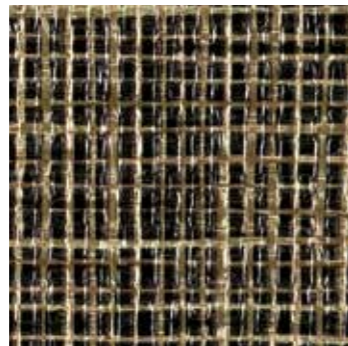
Design

3

Collection



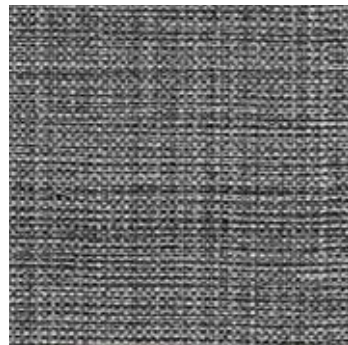
In-Grained



Raffia Weave



Sahara Silk



Simplicity



Stella



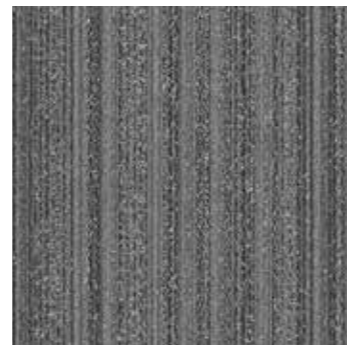
Stealla Streak



Tic-Tac-Texture



Tranquility



Uplift

The key breakthrough of P3TEC is the compelling collection of nine designs, with eight emboss textures, and 148 colour choices. Bring the look of silk, linen and wovens to high-traffic, high-abuse areas in healthcare, food service, transportation and much more.



Simplicity
Lemon Grass P3T-60063



Stellar Streak
Carbon P3T-60154



Stellar
Blue Swipe P3T-60134

STELLAR STREAK



Erased P3T-60150 Hailstorm P3T-60152 Blue Swipe P3T-60146



Take-away Tan P3T-60149 Beryl Blue P3T-60145 Grey Lead P3T-60147

STELLAR



Persimmon P3T-60139 Beryl Blue P3T-60137 Silver Scratch P3T-60122



Royal Reveal P3T-60138 Chafed Straw P3T-60131 Bark P3T-60123

Due to the printing process, colors may vary slightly from actual product.

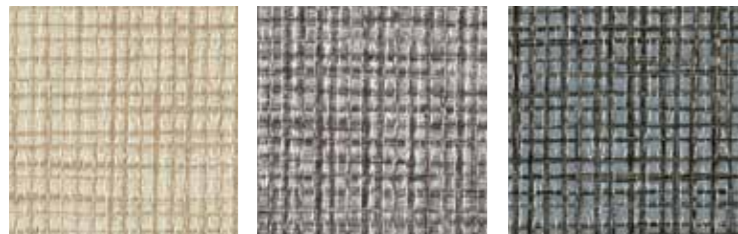


Raffia Weave
Cashmere P3T-60057



Sahara Silk
Deep Sea P3T-60001
Fès P3T-60008

RAFFIA WEAVE



Linen P3T-60056 Tussah P3T-60050 Antique Blue P3T-60047

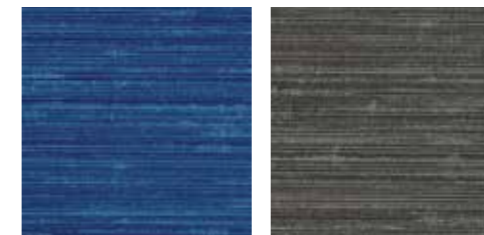


Mangrove P3T-60049 Bianca P3T-60052 Blackbent P3T-60048

SAHARA SILK

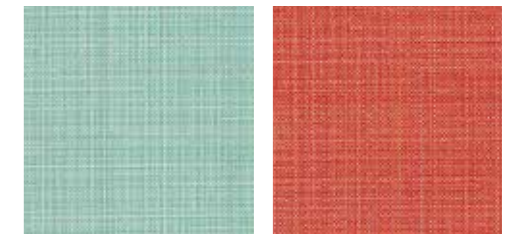


Kilim P3T-60021 FES P3T-60008



Zellij P3T-60002 Moroccan Night P3T-60009

SIMPLICITY



Serenity P3T-60062 Smack Melon P3T-60064



Plum Passion P3T-60060 Mushroom P3T-60068

Due to the printing process, colors may vary slightly from actual product.



Tic-Tac-Texture
Dark Duet P3T-60091



Tranquility
English Toffee P3T-60032

TIC-TAC-TEXTURE



Brass P3T-60085



Country Chord P3T-60089



Misty Melody P3T-60086



Lyrical Leaf P3T-60083



The Blues P3T-60080

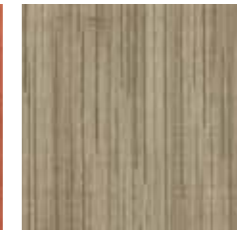


Dark Duet P3T-60091

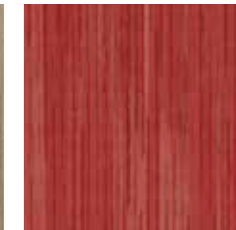
TRANQUILITY



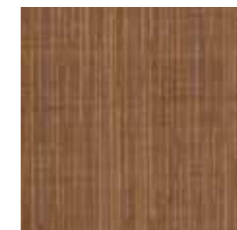
Tiger Lily P3T-60029



English Toffee P3T-60032



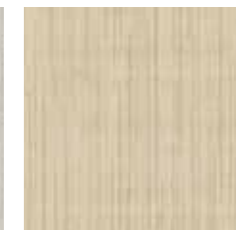
Brazen Red P3T-60028



Cognac P3T-60030



Dove Grey P3T-60037



Buttercream P3T-60026

Due to the printing process, colors may vary slightly from actual product.



Uplift
Pewter Grey P3T-60108
Bone White P3T-60112



In-Grained
Dogwood P3T-60157

UPLIFT



Lilac P3T-60104



Clear Blue P3T-60102



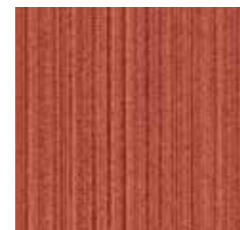
Raw Sugar P3T-60111



Early Spring P3T-60101

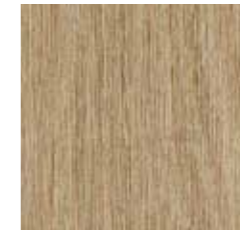


Chocolate P3T-60109



Danger P3T-60117

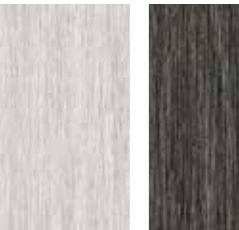
IN-GRAINED



Cedar

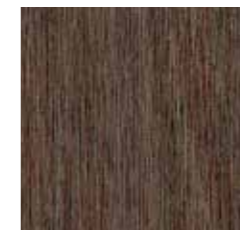


Birchwood



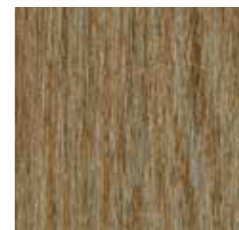
Ebony

P3T-60162



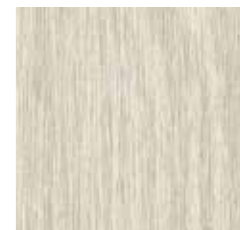
Rosewood

P3T-60161



Teak

P3T-60160



Soft Maple

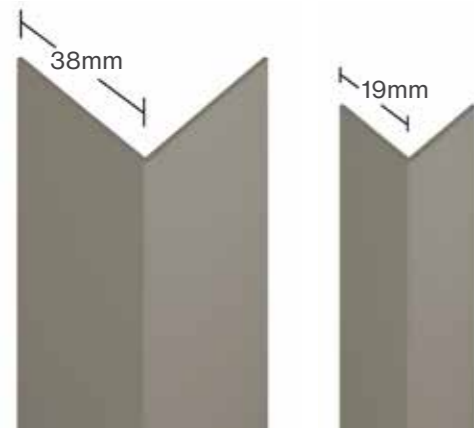
P3T-60155

Due to the printing process, colors may vary slightly from actual product.

Corner Guard

Select from 65 colours for outside corner protection, available in 2440mm and 2 wing sizes (19mm and 38mm). No additional connecting pieces are required for installation.

See Baresque for samples and colour / wing / length product codes.



	Cloud	CG101		Moon Dust	CG102
	Canyon Grey	CG103		Cement	CG104
	Ashes	CG105		Cobblestone	CG106
	Dry Charcoal	CG107		Gargoyle	CG108
	Onyx	CG109		Burnt Grey	CG110
	Amethyst Smoke	CG111		French Navy	CG112
	Dark Denim	CG113		Perky Blue	CG114
	Blue Grey	CG115		Frost	CG116
	Rain Cloud	CG117		Sea Breeze	CG118
	Scotch Pine	CG119		Smithsonite	CG120
	Pale Clover	CG121		Misty Harbor	CG122

	Eucalyptus	CG123		Vineyard	CG124		Washed Green	CG125		Terra Verde	CG126
	Raffia Cream	CG127		Eggnog	CG128		Sheepskin	CG129		China Clay	CG130
	Porcelain	CG131		Bone	CG132		Antique Buff	CG133		Light Mocha	CG134
	Barely Brown	CG135		Sand Castle	CG136		Navajo White	CG137		Aged Cream	CG138
	Vintage Tan	CG139		Desert Tan	CG140		Latte	CG141		Soft Ecru	CG142
	Fawn	CG143		Toasted Tan	CG144		Almond	CG145		Amber	CG146
	Terra Cotta	CG147		Carnelian	CG148		Poinsettia	CG149		Berry Preserve	CG150
	Coffee	CG151		Cocoa	CG152		Mousse	CG153		Cigar	CG154
	Pinecone	CG155		Oyster	CG156		Macadamia Nut	CG157		Tofu	CG158
	Newstone	CG159		Abalone	CG160		Sparrow	CG161		Gravel	CG162
	Brushed Zinc	CGM163		Brushed Mercury	CGM164		Brushed Copper	CGM165			

Due to the printing process, colors may vary slightly from actual product.

Product Specifications

DETAILS	
Width	Trims to 1220mm
Packaging	13.5m rolls
Backing	Heavy Polyester / Cotton knit
Fire Safety	In accordance with AS/NZS 3837 Classification - Group 2 Specific Extinction - Less than 250m ² /kg

ENVIRONMENTAL AND HEALTH	
Indoor Air Quality	Meets California Section 01350
Fungal Resistant	ASTM G-21
Bacterial Resistant	ASTM G-22
Sustainability	NSF/ANSI 342, Third-party certified
EPD	Third-party certified
HPD	Third-party certified

PERFORMANCE ADVANTAGES				
	IMPACT	CHEMICAL	Abrasion	
P3TEC	24 - 100+ (See Table)	Fully Chemical Resistant	Highly Resistant	
Type III Wallcovering	15	Stain Varies Resistant		
Rigid Sheet	22 - 100+	Stain Highly Resistant	Resistant	

Impact

IMPACT RESISTANCE
ASTM D-5420-10
Gardner Method

Pattern	In-Lbs
In-Grained	60
Raffia Weave	60
Sahara Silk	100+
Simplicity	100+
Stellar	100+
Stellar Streak	100+
Tic-Tac-Texture	60
Tranquility	100+
Uplift	24

Chemical

CHEMICAL RESISTANCE
ASTM D-1308
Spot test covered 3.1.1

Cleaning Agents
Tide w/H₂O
Virex
Ammonia
Isopropyl Alcohol
Goof Off
Fantastik
Lysol
Hydrogen Peroxide
Bleach
Methyl Ethyl Ketone

RESULTS: No change in P3TEC surface from exposure to these agents.

CLEANING
ASTM F-793
Section 7.5

Staining Agents
Grape Juice
Mustard
Black Sharpie
Ink Pen
Betadine
Shoe Polish
Black Rubber
Brake Fluid
Spray Paint

RESULTS: Each staining agent above was wiped clean with at least one listed cleaning agent.

Abrasion

ABRASION RESISTANCE
ASTM D-4060-14
Taber Method

TEST SPECS
CS-10F wheel
500 gram load @200 cycles
Weight loss: 0.02%

Best stain removal results can be achieved by use of progressively strong, non-abrasive cleaners, and which can be supplemented by use of a soft bristle brush.

Type II Wallcovering

For adjacent wall surfaces needing less protection, you can specify metreage for most of the pattern/colour options of the P3TEC program in Type II, 20 oz quality. See individual pages for availability.



Uplift
Bone White P3T-60112

