



zinträ[®]

SHAPES
Technical Specifications



Using common geometric forms, add character with Zintra Acoustic Shapes. Install them in a focused area to draw attention or spread them throughout to create a progressive design.

Zintra Shapes Circle in Lime & Pewter Ivory

zintra® .2

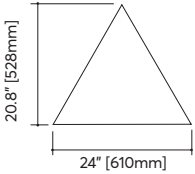
INSTALLATION IDEAS



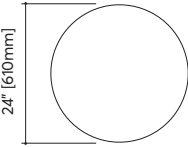


Top image: Zintra Shapes Large Rectangle and Square in Linen, Ivory, and Ecru
Bottom image: Zintra Shapes Square and Triangle in Slate and Ecru

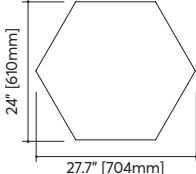
TECHNICAL DRAWINGS



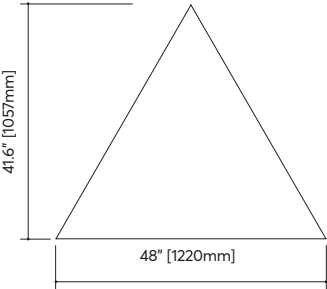
SMALL TRIANGLE



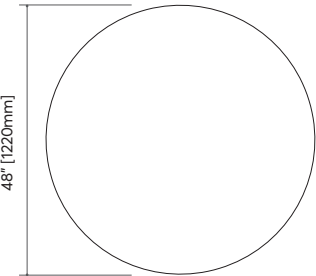
SMALL CIRCLE



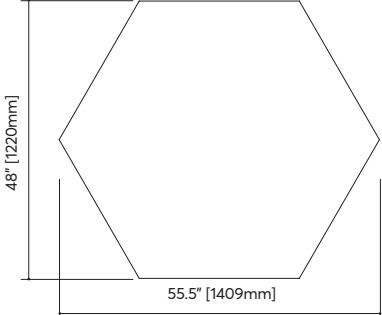
SMALL HEXAGON



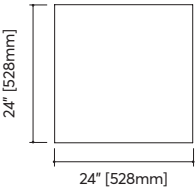
LARGE TRIANGLE



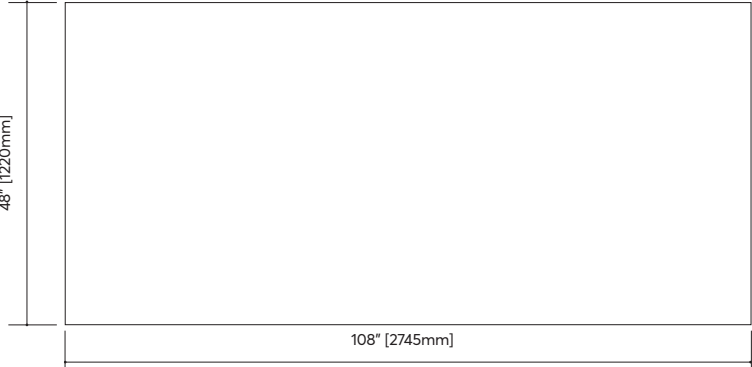
LARGE CIRCLE



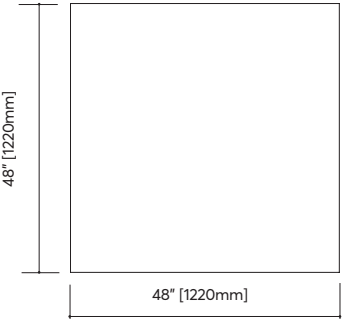
LARGE HEXAGON



SMALL SQUARE



LARGE RECTANGLE



LARGE SQUARE

TECHNICAL DETAILS

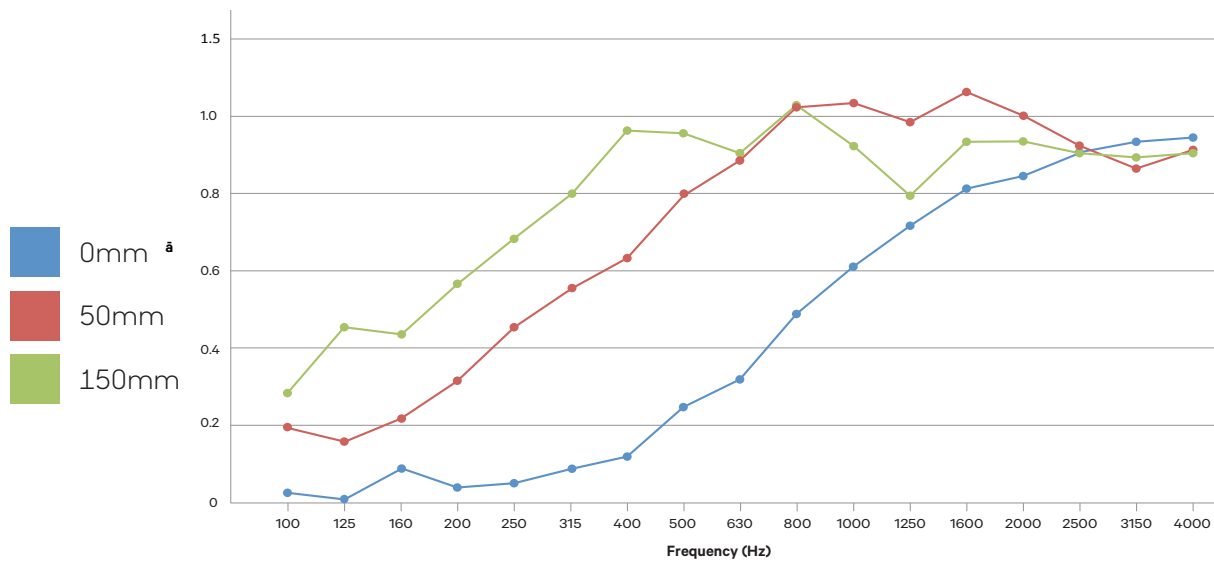
MATERIAL

100% solution-dyed polyester.

ACOUSTIC RATING

ASTM C423-09a test results: 0.45-0.90 NRC depending on distance from wall.

Frequency/Hz	100	125	160	200	250	315	400	500	630	800	1000	1250	1600	2000	2500	3150	4000	$\bar{\alpha}$	NRC
0mm	0.03	0.01	0.09	0.04	0.05	0.09	0.12	0.25	0.32	0.49	0.61	0.72	0.82	0.85	0.91	0.94	0.95	0.44	0.45
50mm	0.20	0.16	0.22	0.32	0.46	0.56	0.63	0.80	0.89	1.03	1.04	0.99	1.07	1.00	0.93	0.87	0.92	0.81	0.80
150mm	0.29	0.46	0.44	0.57	0.69	0.81	0.97	0.96	0.91	1.04	0.92	0.80	0.94	0.94	0.91	0.90	0.91	0.87	0.90



SIZE

See page 5.

Thickness tolerance +/- .02" (0.5mm)

Width and length tolerance +/- 1/8" (3mm)

SURFACE FINISH

Both sides "A" or "B" have a matt surface and are suitable to use as the face. To ensure consistency of look, it is recommended that the face surfaces are either all "A" or all "B" when installing side-by-side.

WEIGHT

0.5 lb / ft² / 2.4 kg / m²

APPLICATION

Indoor areas only.

FABRICATION

Utility knife and CNC with oscillating knife.

INSTALLATION

Shapes are supplied flat pack. Shapes are then suspended from the ceiling using hanging hardware supplied.

Go to zintraacoustic.com for complete installation instructions.

FIRE RATING

ASTM-E84 - Class A classification

AS ISO 9705 - 2003 - Group 1 classification

EN-13501 - B-s2-d0 classification.

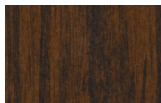
LIGHTFASTNESS

AATCC 16.3, Option 3: Panel color change at 40AFU is 4.5.

COLOR RANGE

24 sheet colors and 4 timber colors.

TIMBER COLORS



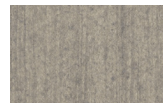
Merbau (MB)



Spotted Gum (SP)

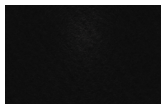


Eucalyptus (EU)



Ironbark (IB)

PLAIN COLORS



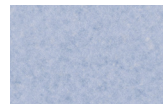
Tar (TR)



Slate (SL)



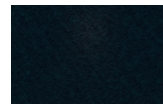
Cobalt (CB)



Sky (SY)



Malachite (MA)



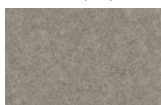
Midnight (MI)



Olive (OL)



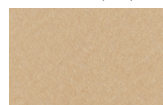
Grass (GS)



Fossil (FL)



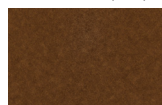
Linen (LN)



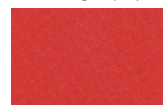
Ecru (EC)



Brick (BK)



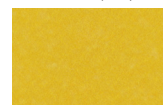
Bark (BR)



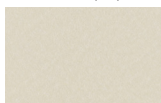
Ochre (OE)



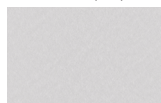
Mandarin (MN)



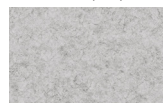
Sunshine (SS)



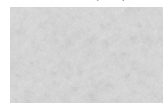
Ivory (IY)



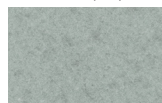
Frost (FT)



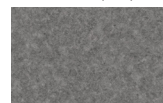
Smoke (SE)



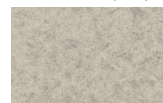
Chambray (CH)



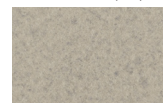
Cadet (CT)



Pewter (PW)



Pebble (PB)



Greige (GR)

TEMPERATURE

Maximum temperature exposure is 240°F (115°C).

MOISTURE ABSORPTION

Polyester fibre when exposed to an atmosphere of 120°F (49°C) at 90% relative humidity for four days showed moisture absorption of less than 0.03% by weight.

VOC TESTING

Standard Method Version 1.2 for CDPH 01350: PASS for all testing scenarios.

CARE INSTRUCTIONS

Vacuum to remove dust.

Remove spills immediately using a clean damp cloth or with soap and water.

Polyester carpet and fabric cleaners can be used - always test an inconspicuous area first.

A stain repellent coating is available for additional protection.

To disinfect, bleach can be used in accordance with CDC cleaning and disinfection instructions. (Solution ratio is 5 tablespoons of bleach to 1 Gallon (3.7 ltr) of water or 4 teaspoons of bleach per quart (0.95 ltr) of water. Spray apply the solution as a mist and wipe off surface moisture.

ENVIRONMENT

Zintra is made from 100% recyclable materials.