

Resort Raffia



54" / Type II / 20 oz. **LOW VOC** **RECYCLED CONTENT** AZ53721 Woven Wheat

SYMPHONY

Resort Raffia

Roll cursor over swatch to see the colorway installed



AZ53715RR White Willow



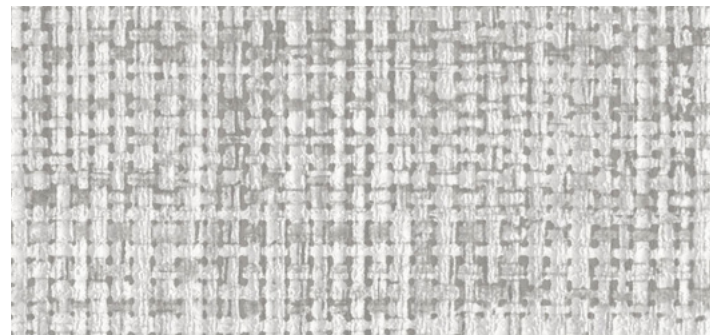
AZ53719RR Coconut



AZ53723RR Linen



AZ53727RR Honeysuckle



AZ53716RR Oyster



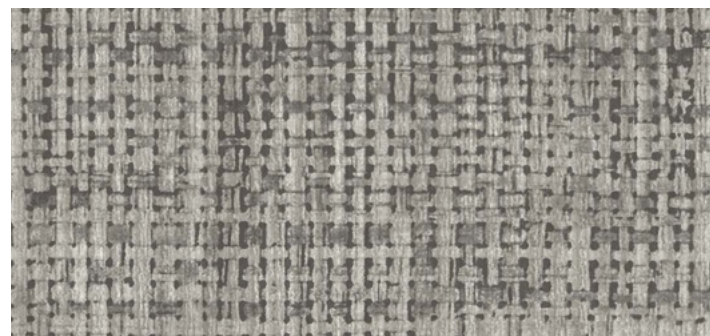
AZ53720RR Barley



AZ53724RR Oats



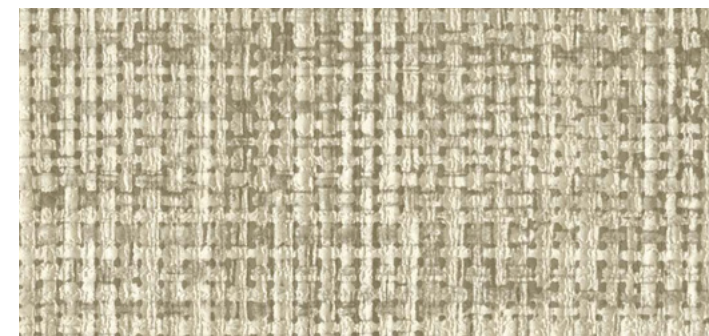
AZ53728RR Natural



AZ53717RR Sparrow



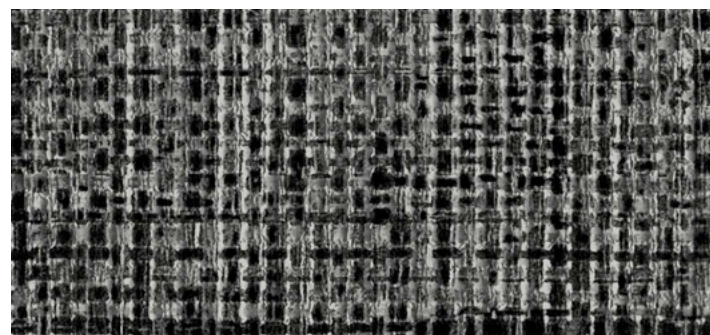
AZ53721RR Woven Wheat



AZ53725RR Marsh



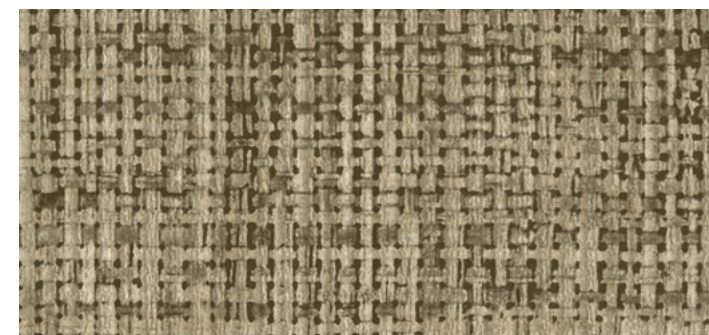
AZ53729RR Jute



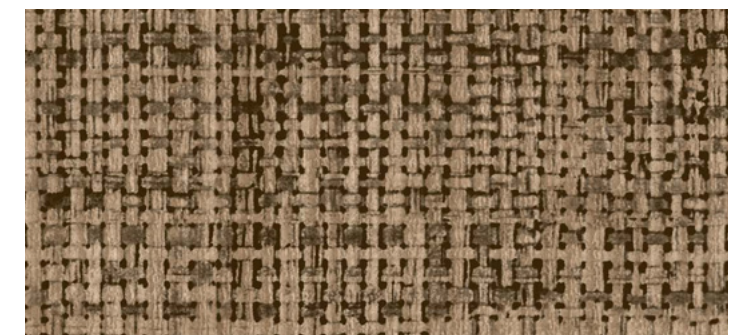
AZ53718RR Graphite



AZ53722RR Sand Dune



AZ53726RR Olive



AZ53730RR Cattail



AZ53721 Woven Wheat

 Render Ready Tiles available

PHYSICAL PROPERTIES

Weight: 20 oz. PLY/620 G/PLM 13.3 oz. PSY/451 G/PSM

Backing: Osnaburg **Width:** 54 in./137 cm

Match: Reverse Random

Meets or exceeds Federal Specification CCC-W-408D for Type II Wallcovering
Custom colors, weights, and micro venting available

FIRE SAFETY

Product Specifications, Fire Safety & Ratings, Environment & Health
and Warranty is available at symphonywallcovering.com

ENVIRONMENT & HEALTH

- Low VOC, California section 01350 IAQ
- 10% Recycled content
- Non-Phthalate
- EPD/HPD
- California Prop 65, no labeling required

CLEANABILITY

Inherent anti-microbial protection

Withstands hospital-grade cleaners & disinfectants

Available as a custom with **INVISICAP** | complete **chemical** protection