

Tuft

10
5

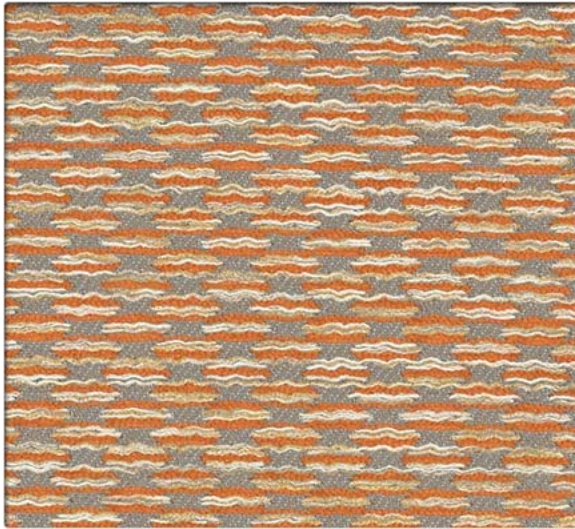


66240 Aspen



66241 Feather

10
5

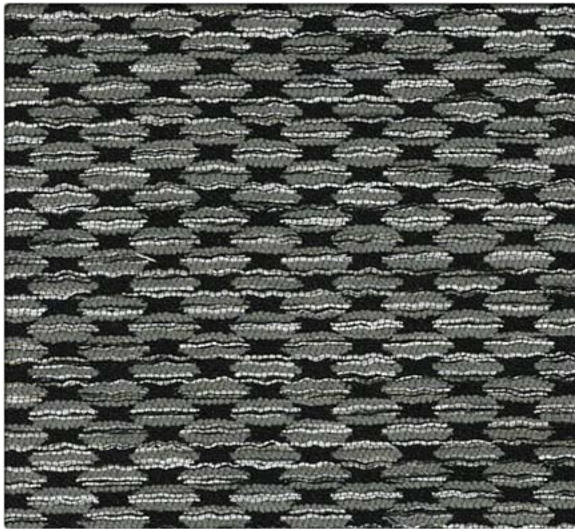


66242 Turmeric



66243 Solara

10
5

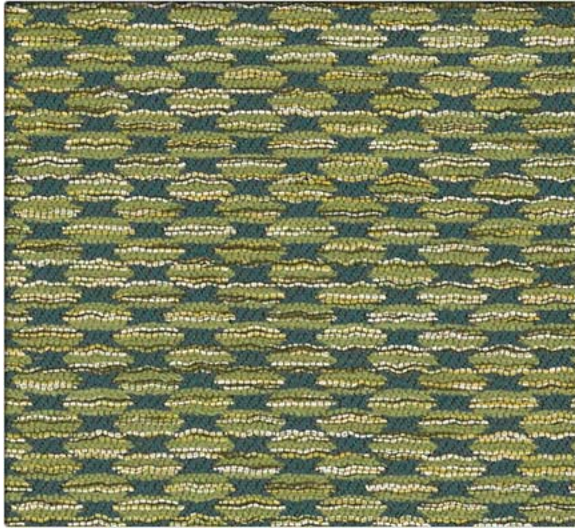


66248 Lantern

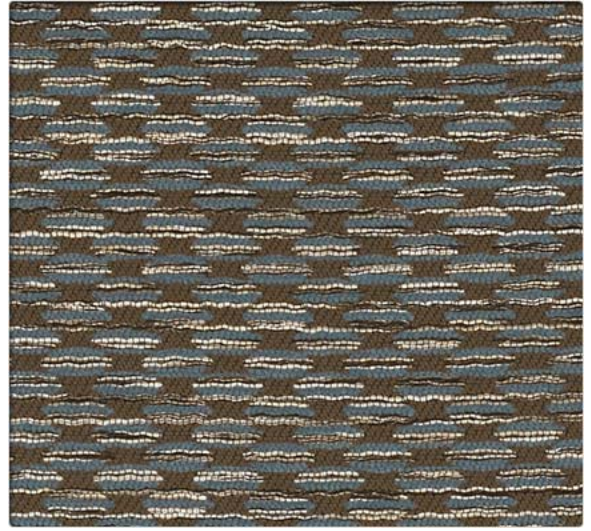


66245 Interlude

Tuft



66246 Palm



66247 Vista



66244 Horizon

Tuft

Wild Kingdom Collection

PERFORMANCE FABRIC

Performance Summary

- Enhanced soil + stain resistance
- Enhanced abrasion resistance
- Bleach-solution cleanable

Environmental

- GREENGUARD Gold Certified
- LBC Red List Free
- REACH Compliant
- Recycled content
- Non PFOA Stain Resistance
- No added flame retardants
- No added antimicrobials

Cleaning and Maintenance

Cleaning Code: **(W-S)** For water-based stains use water-based cleaners. For oil-based stains use solvent-based cleaners. We recommend using a professional cleaning service.

Bleach solutions of up to 10% may be used for more difficult stains.

Dye lots may vary slightly.

* This term and any corresponding data refer to the typical performance in the tests indicated and should not be construed to imply the behavior of this or any other material under actual fire conditions.

Specifications



Content	58% Polyester, 31% Post Consumer Recycled Polyester, 11% Nylon
Finish	Non-PFOA Stain Resistant
Backing	Acrylic
Weight	878 g/lin. m ± 28 g
Width	137.2 cm
Roll Size	50.3 m
	Made in the USA

Performance Characteristics

Abrasion Resistance ASTM D-4157	Exceeds 78,000 double rubs - heavy duty
Break Strength ASTM D-5034	Warp: 85.7 kg min, Fill: 146.1 kg min
Tear Strength ASTM D-2261	Warp: 10.9 kg min, Fill: 19.1 kg min
Seam Slippage ASTM D-4034	Warp: 33.6 kg min, Fill: 18.1 kg min
Brush Pilling ASTM D-3511	Class 3.0 min.
Colorfastness to Light AATCC-16	40 Hours, Class 4.0
Crocking AATCC-8	Dry: Class 4.0, Wet: Class 3.0

Flammability*

California Technical Bulletin 117-2013 Section 1	Passed
UFAC	Class 1
NFPA 260	Class 1



Stinson®

C.F. Stinson, LLC
2849 Product Drive
Rochester Hills, MI 48309

P 800 841 6279
F 248 299 3884

cfstinson.com