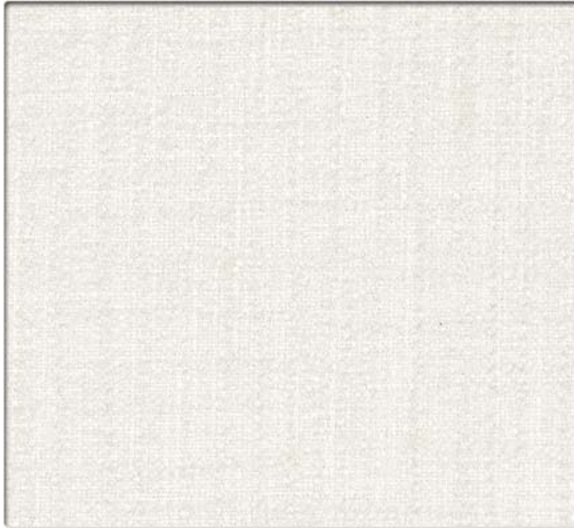


10
5



66140 Cream

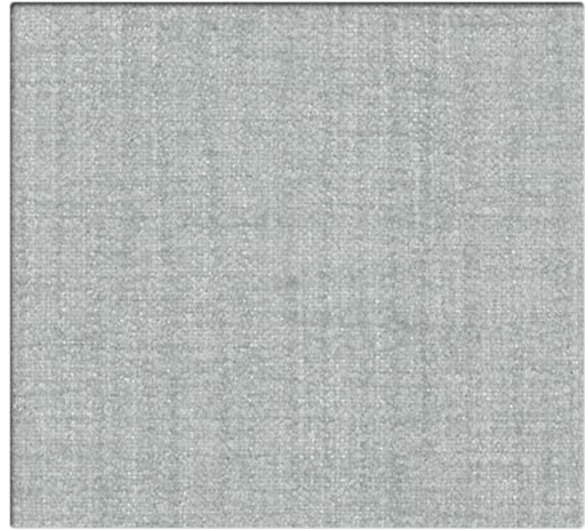


66164 Pirate

10
5



66142 Gourd



66143 Tranquil

10
5

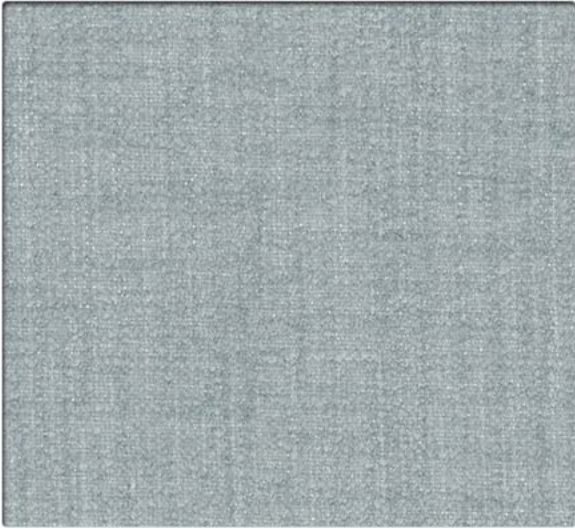


66144 Agave



66145 Melon

10
5



66146 Ariel

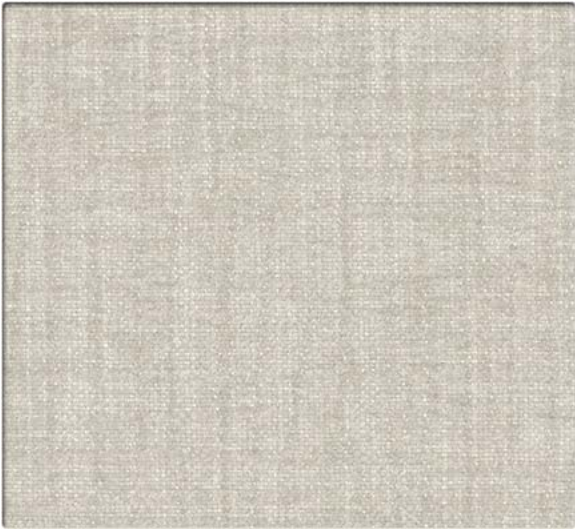


66147 Lima

10
5



66148 Oat

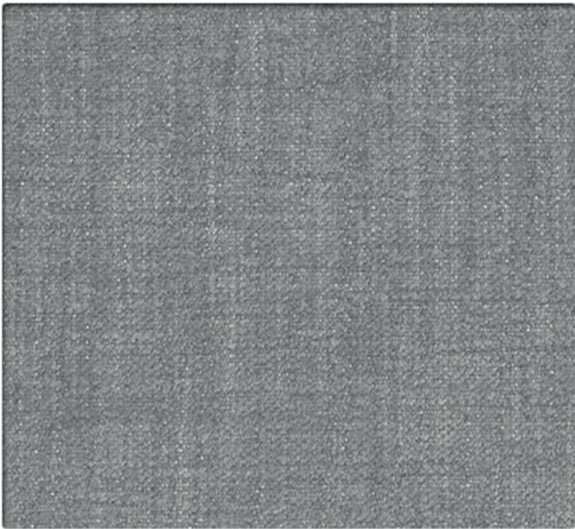


66149 Shell

10
5



66150 Blossom



66151 Heron

10
5

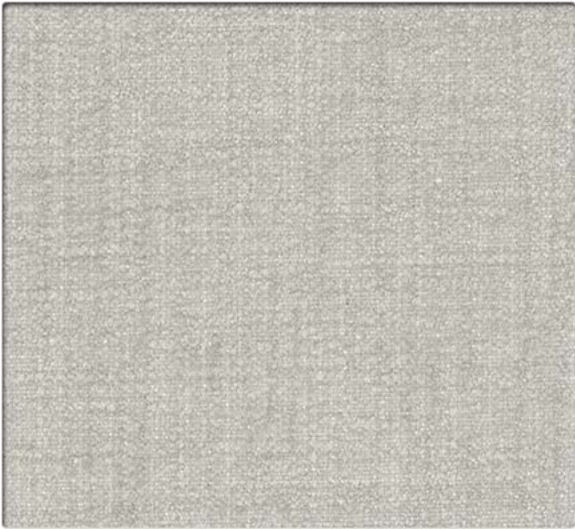


66152 Holly

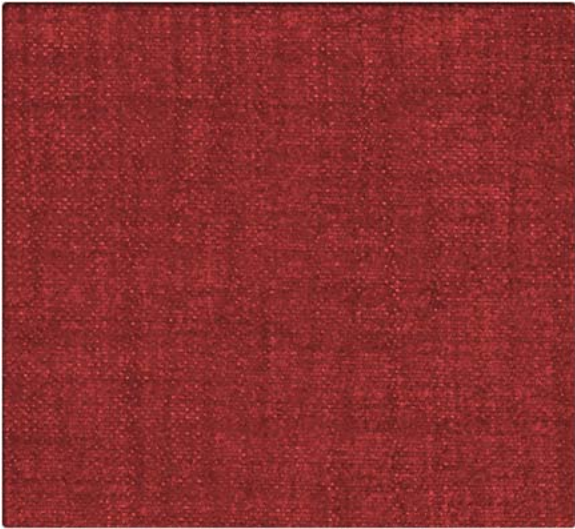


66153 Elm

10
5



66154 Dove



66155 Tapas

10
5



66156 Birdy

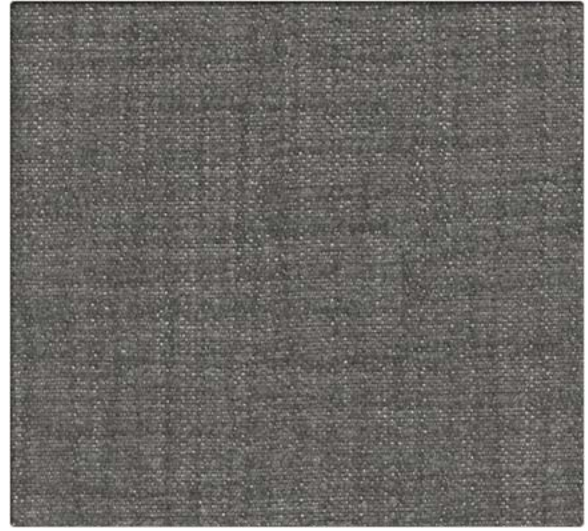


66157 Hydra

10
5



66158 Ash



66159 Shoal

10
5



66160 Sultry

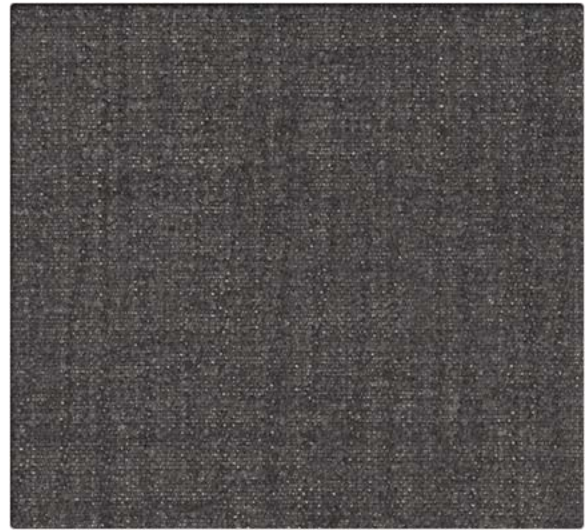


66161 Tempest

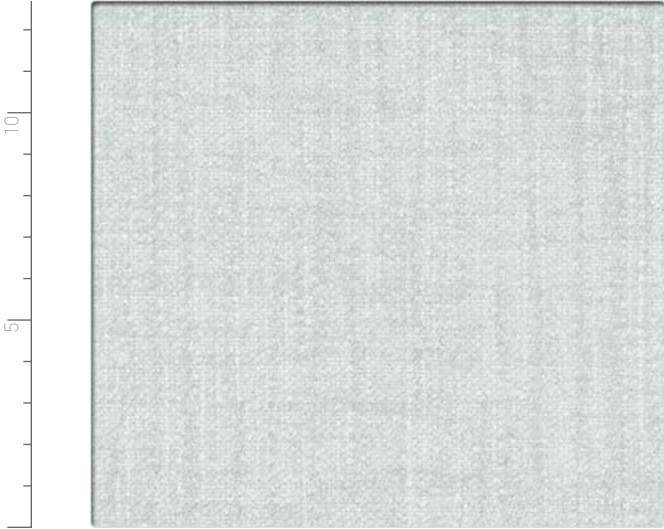
10
5



66162 Navy



66163 Swift



66141 Crystal

Performance Summary

- Enhanced soil + stain resistance
- Enhanced abrasion resistance
- Fluorine Free Repellency
- Fluid barrier
- Bleach-solution cleanable

Environmental

- GREENGUARD Gold Certified
- LBC Red List Free
- REACH Compliant
- RoHS Compliant
- Healthier Hospitals Compliant
- No PFAS, fluorocarbons or perfluorinated compounds
- No added flame retardants
- No added antimicrobials

Cleaning and Maintenance

Cleaning Code: **(W-S)** For water-based stains use water-based cleaners. For oil-based stains use solvent-based cleaners. We recommend using a professional cleaning service.

Bleach solutions of up to 10% may be used for more difficult stains.

Dye lots may vary slightly.

* This term and any corresponding data refer to the typical performance in the tests indicated and should not be construed to imply the behavior of this or any other material under actual fire conditions.

** Multiple factors affect fabric durability and appearance retention, including end-user application and proper maintenance. Wyzenbeek results above 100,000 double rubs have not been shown to be an indicator of increased lifespan.

Specifications



Content	92% Polyester, 6% Polyurethane, 2% Silicone
Finish	Non-Fluorine Stain Resistant
Backing	Thermo Bonded High Performance Polyurethane
Weight	682 g/lin. m ± 28 g
Width	137.2 cm
Roll Size	50.3 m

Performance Characteristics

Abrasion Resistance** ASTM D-4157	Exceeds 100,000 double rubs - heavy duty
Break Strength ASTM D-5034	Warp: 149.7 kg min, Fill: 65.8 kg min
Tear Strength ASTM D-2261	Warp: 22.5 kg min, Fill: 10.6 kg min
Seam Slippage ASTM D-4034	Warp: 39.7 kg min, Fill: 45.1 kg min
Brush Pilling ASTM D-3511	Class 5.0 min.
Colorfastness to Light AATCC-16	40 Hours, Class 4.0
Crocking AATCC-8	Dry: Class 4.5, Wet: Class 4.5
Fluid Barrier	Supreen™ High Performance Integrated Fluid Barrier

Flammability*

California Technical Bulletin 117-2013 Section 1	Passed
UFAC	Class 1
NFPA 260	Class 1



Stinson®

C.F. Stinson, LLC
2849 Product Drive
Rochester Hills, MI 48309

P 800 841 6279
F 248 299 3884

cfstinson.com