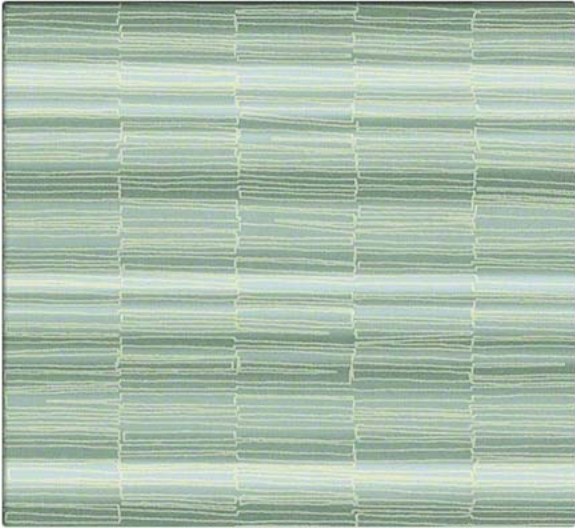


10
5



FRQ220 Ionic



FRQ222 Celadon

10
5

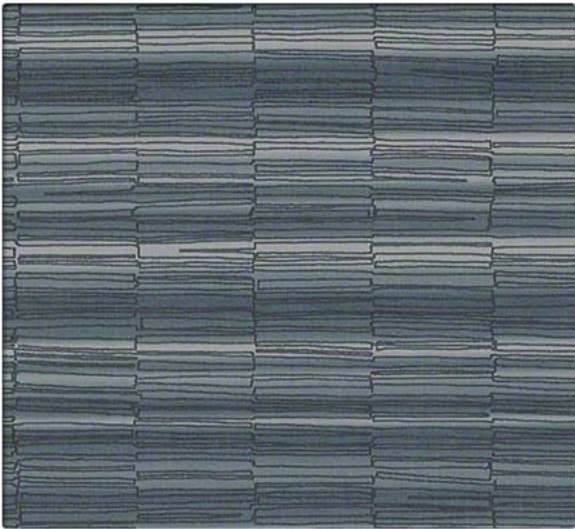


FRQ223 Seashore

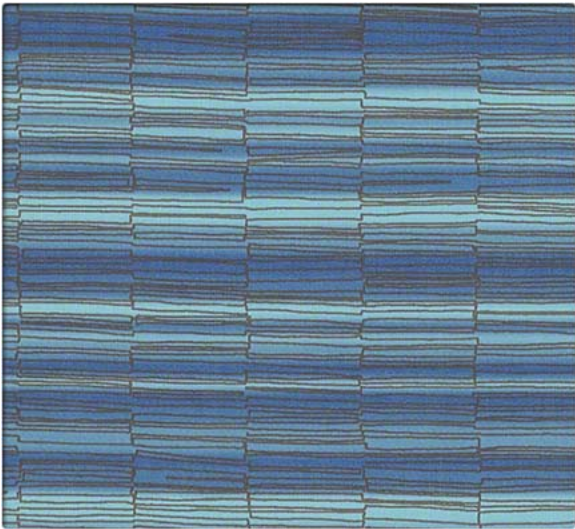


FRQ224 Copper

10
5

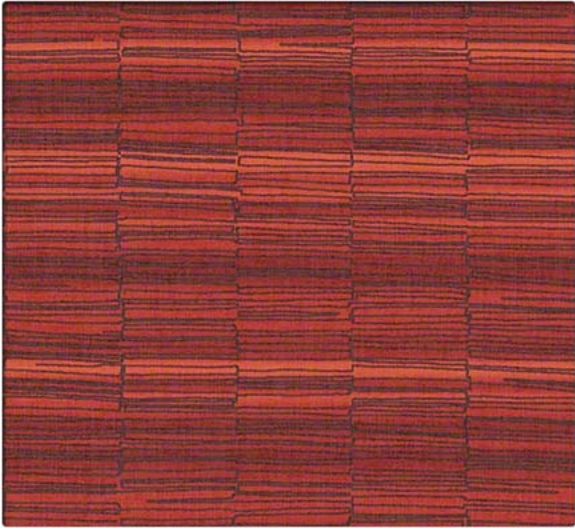


FRQ229 Nautical



FRQ226 Sapphire

10
5



FRQ227 Sangria



FRQ228 Partridge

10
5



FRQ225 Gingersnap

Performance Summary

- Enhanced soil + stain resistance
- Enhanced abrasion resistance
- CFFA-Healthcare-201: Certified
- Enhanced ink resistance
- Denim stain resistant
- Fluid barrier
- Bleach-solution cleanable
- Enhanced fade resistance

Environmental

- GREENGUARD Certified
- REACH Compliant
- RoHS Compliant
- No PFAS, fluorocarbons or perfluorinated compounds
- No added flame retardants
- No added antimicrobials
- Does not contain formaldehyde
- Formulated without Phthalates

Cleaning and Maintenance

Cleaning Code: **(W)** Clean with water-based foam or water-based cleaners only. Do not use solvents. We recommend using a professional cleaning service.

Bleach solutions of up to 10% may be used for more difficult stains.

Dye lots may vary slightly.

* This term and any corresponding data refer to the typical performance in the tests indicated and should not be construed to imply the behavior of this or any other material under actual fire conditions.

** Multiple factors affect fabric durability and appearance retention, including end-user application and proper maintenance. Wyzenbeek results above 100,000 double rubs have not been shown to be an indicator of increased lifespan.

Specifications



Content	Non-Phthalate Vinyl Surface with Polyester Backing
Finish	Advanced Soil and Stain Resistant Top Coat + ink resistance
Backing	100% Polyester
Weight	930 g/lin. m ± 28 g
Width	137.2 cm
Repeat	Horizontal: 22.5 cm, Vertical: 44.8 cm, directional
Roll Size	27.4 m

Performance Characteristics

Abrasion Resistance** ASTM D-4157	Exceeds 100,000 double rubs - heavy duty
Adhesion CFFA-3	Warp: 1.5 kg min, Fill: 1.5 kg min
Break Strength CFFA-17	Warp: 54.9 kg min, Fill: 32.7 kg min
Tear Strength CFFA-16	Warp: 8.2 kg min, Fill: 8.2 kg min
Seam Slippage CFFA-14	Warp: 20.9 kg min, Fill: 15.9 kg min
Colorfastness to Light CFFA-2	1000 Hours, Class 4.5
Crocking CFFA-7	Dry: Class 5.0, Wet: Class 5.0
Fluid Barrier	Inherent Fluid Barrier

Flammability*

California Technical Bulletin 117-2013 Section 1	Passed
NFPA 260	Class 1
UFAC	Class 1



This product is formulated without phthalates.



Stinson®

C.F. Stinson, LLC
2849 Product Drive
Rochester Hills, MI 48309

P 800 841 6279
F 248 299 3884

cfstinson.com