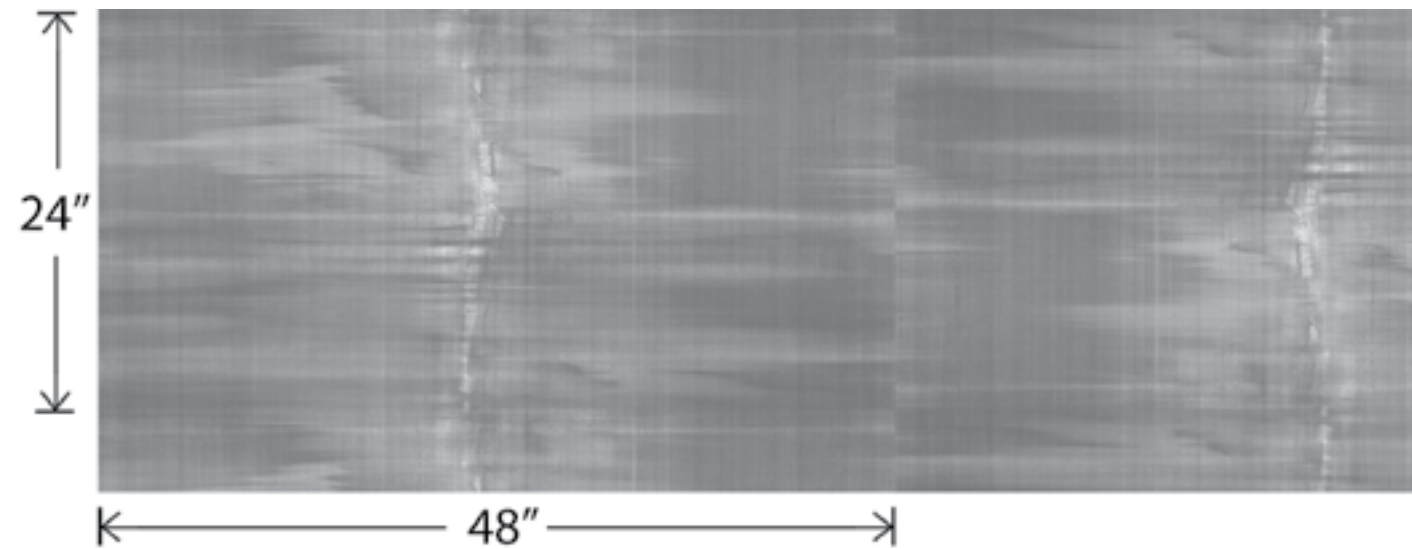




Amour Heights Developments- 89 Avenue Yorkville Presentation Gallery

Silver Point • P3T-60336



P3TEC

Impact Chemical Abrasion



Render Ready Tiles available

Serene Green • P3T-60343

Exhale Specifications

- Width** Trims to 48"
- Packaging** 15 yard rolls
- Thickness** 0.032
- Backing** Heavy Polyester/Cotton knit
- Installation** Straight Random
- Fire Safety** Class "A" rated ASTM E-84; NFPA 286
- Indoor Air Quality** Meets California Section 01350

Environmental

- HPD, EPD: third-party certified
- Recycled content
- California Prop 65, no labeling required
- Non-phthalate

Coordinating Trim, Corner Guards and Type II wallcovering available.
For specifications and installation please visit p3tec.com

Protect Against the Unexpected...
Impact, Chemical and Abrasion resistant

P3TEC

Impact Chemical Abrasion

advanced
wall protection

Exhale



Roll cursor over swatch to see the colorway installed

Exhale



Baby's Breath • P3T-60335



Whitewash • P3T-60338



Warm Lavender • P3T-60341



Silver Point • P3T-60336



Canvas Cloth • P3T-60339



Sea Breeze • P3T-60342



Graphite • P3T-60337



Smooth Sable • P3T-60340



Serene Green • P3T-60343