

USES

Panels
Upholstered Walls
Upholstery
Wallcovering
Xorel Artform

CONTENTS

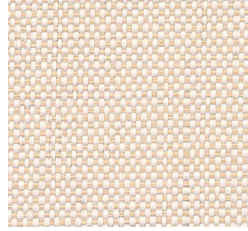
100% IFR Xorel®

Carnegie Xorel®

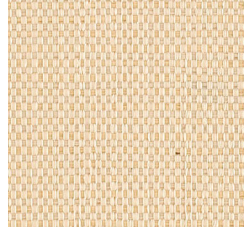
Carnegie Xorel®



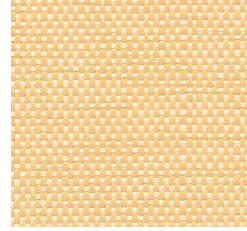
705



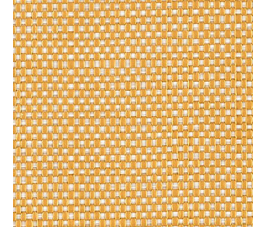
717



2002



712



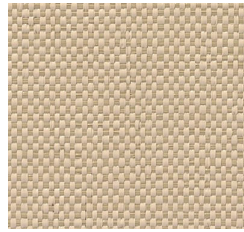
2003



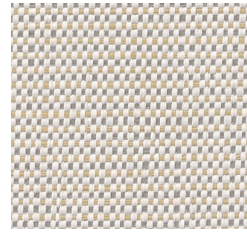
706



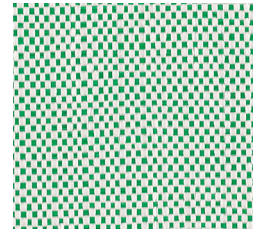
711



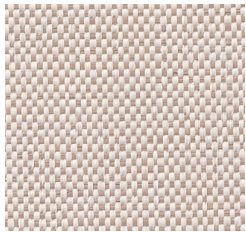
700



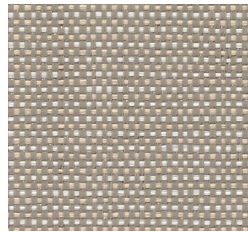
765



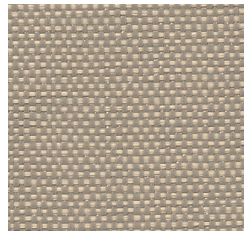
2011



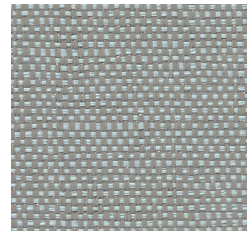
759



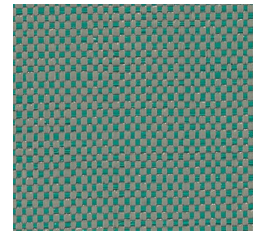
766



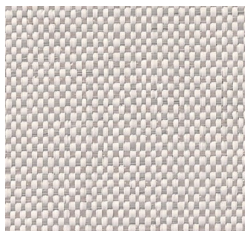
703



735



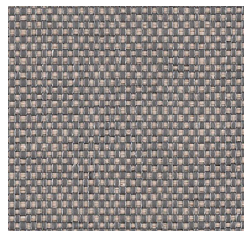
737



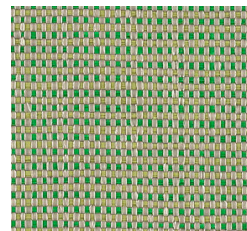
753



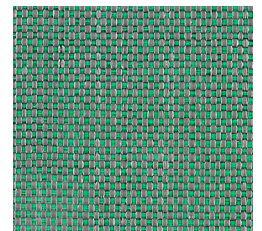
2000



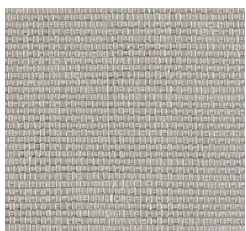
2001



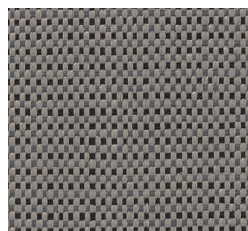
2015



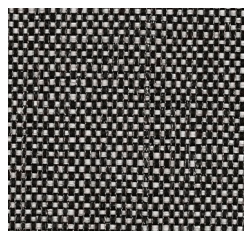
2014



2022



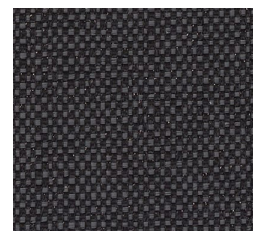
768



2023

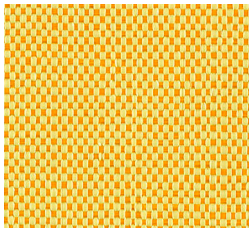


770

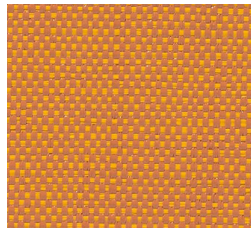


769

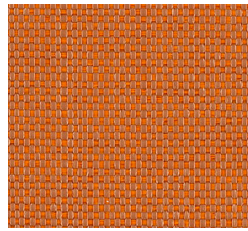
Carnegie Xorel®



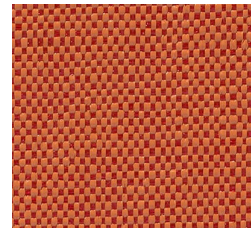
2005



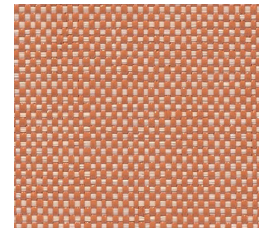
721



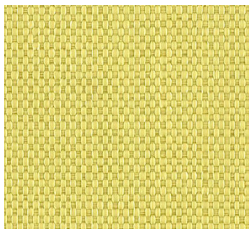
2043



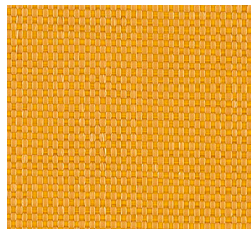
726



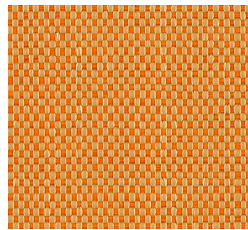
718



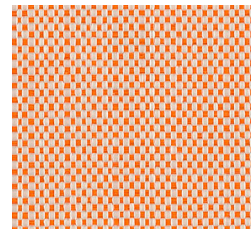
2007



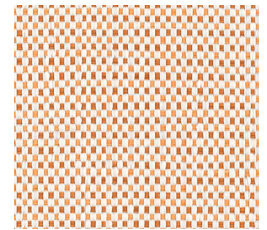
2004



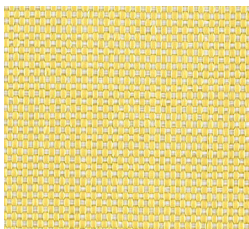
2044



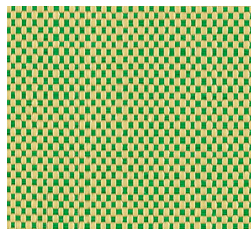
2045



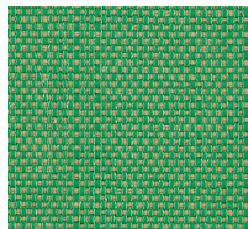
2046



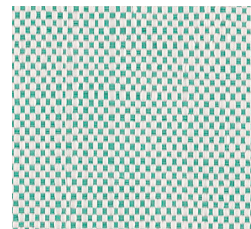
2006



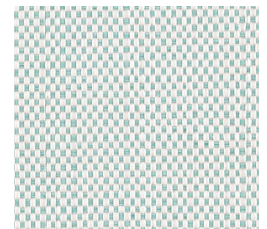
2008



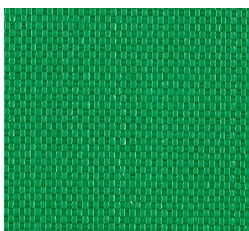
2009



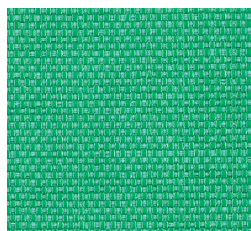
2020



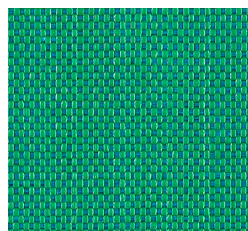
2021



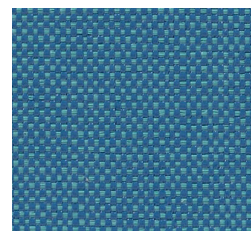
2010



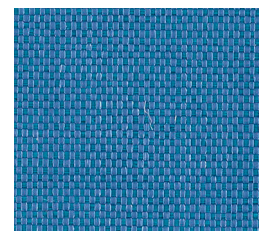
2012



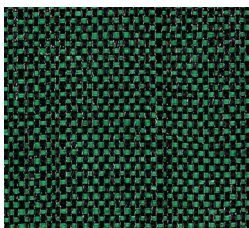
2013



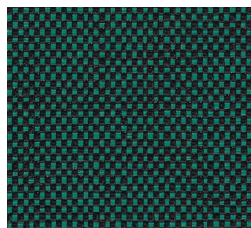
739



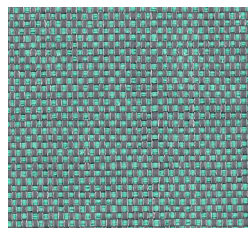
2030



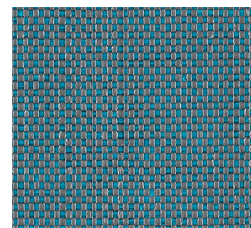
2018



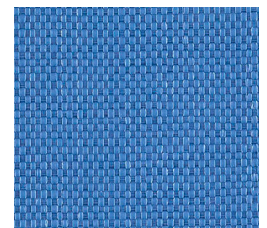
734



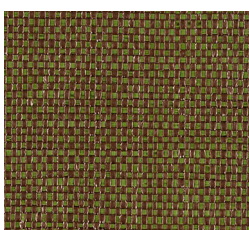
2019



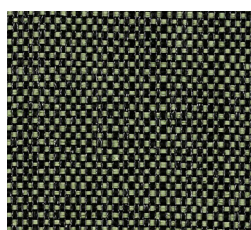
2031



2029



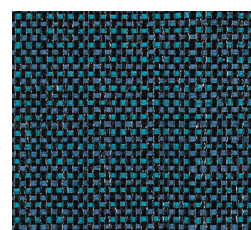
2016



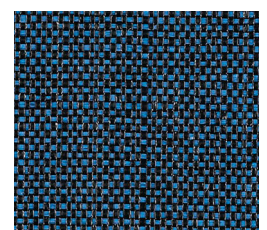
2017



752

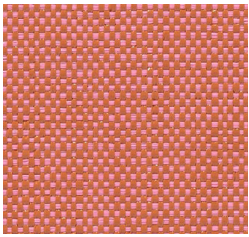


2032

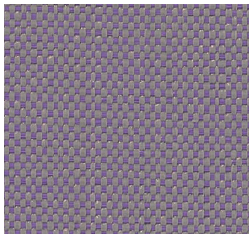


2024

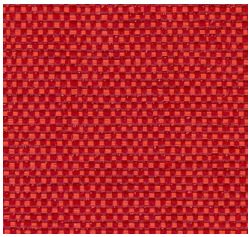
Carnegie Xorel®



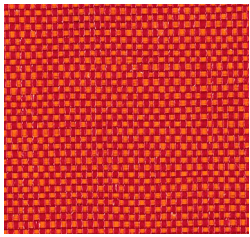
724



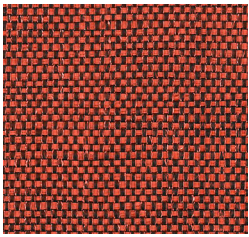
2047



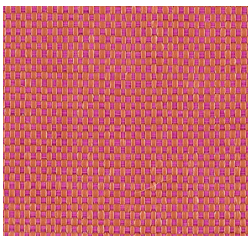
727



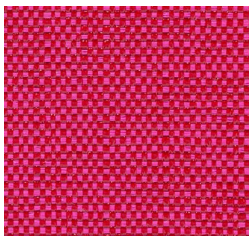
2042



2040



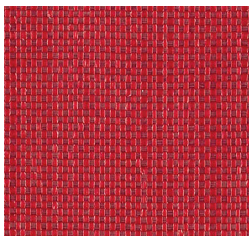
2048



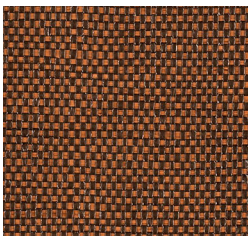
761



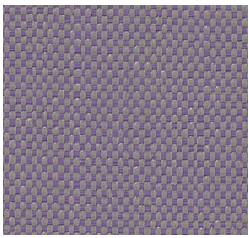
728



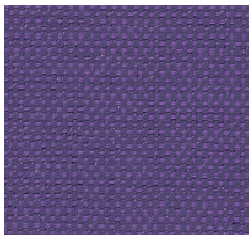
2041



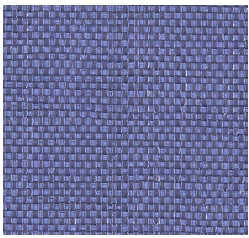
2039



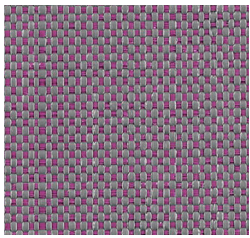
747



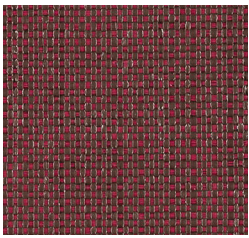
750



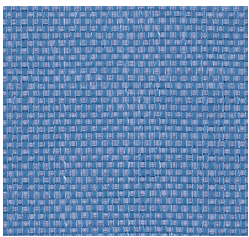
2034



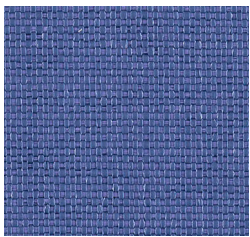
2035



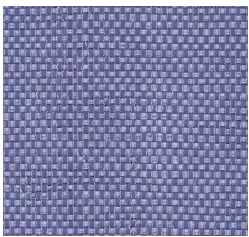
2038



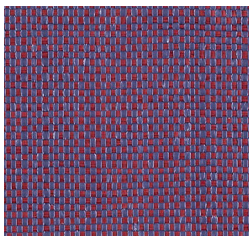
2027



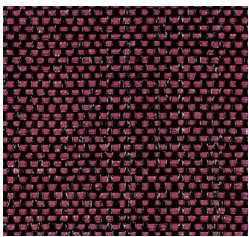
2028



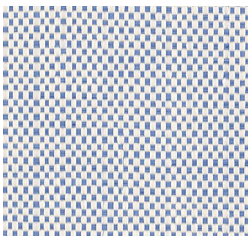
2033



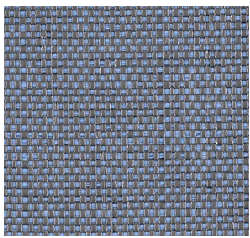
2036



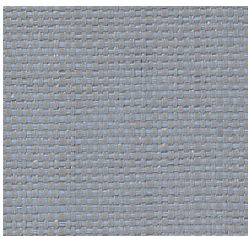
2037



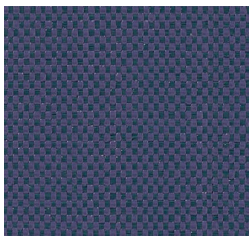
2026



2025



742



751



764

USES	Panels, Upholstered Walls, Upholstery, Wallcovering, Xorel Artform								
BACKINGS/WIDTHS	<table border="0"> <tr> <td>Unbacked</td> <td>56 in / 142 cm</td> </tr> <tr> <td>Acrylic Backed</td> <td>54 in / 137 cm</td> </tr> <tr> <td>X-Protect Sit™</td> <td>54 in / 137 cm</td> </tr> <tr> <td>X-Protect Wall™</td> <td>52 in / 132 cm</td> </tr> </table>	Unbacked	56 in / 142 cm	Acrylic Backed	54 in / 137 cm	X-Protect Sit™	54 in / 137 cm	X-Protect Wall™	52 in / 132 cm
Unbacked	56 in / 142 cm								
Acrylic Backed	54 in / 137 cm								
X-Protect Sit™	54 in / 137 cm								
X-Protect Wall™	52 in / 132 cm								
CONTENTS	100% IFR Xorel®								
FLAME RETARDANCY	ASTM E84 Class A / Class 1, Fabric meets Underwriters Laboratory(UL) 1286 Flammability Requirements for Office Furnishings, NFPA 265 Room Corner Test, FAA 25.853 (a&b), NYC 294-40 SR, NFPA 260 Class 1, California Technical Bulletin 117 - 2013, Canadian ULC S102								
DURABILITY	No wear 1 million double rubs*								
ECO INFO	<p>Cradle to Cradle Certified^{CM} Silver facts^{CM} Certified Silver LEED SCS Indoor Advantage™ Gold Free of Antimicrobials, Antimony, Bisphenol A (BPA), Chlorine, DMF, Fluorocarbons, Formaldehyde, Halogenated fire retardants, Heavy metals, Ozone-depleting chemicals, PFC, Phthalates, Plasticizers, PVC, Solvents, Stain resistant finishes No topical finishes Antimicrobial, Antibacterial, Safely Disposable, Extremely low VOCs Responsible Return Program</p>								
ACOUSTICS	NRC of 0.90 when wrapped around a 2" thick panel Test Method ASTM C 423								
CLEANING CODES	WS & BC - Water / Solvent & Bleach Cleanable								
NOTES	<p>X-Protect: Proprietary Xorel backing technology which prevents stains and moisture from passing through the textile enabling the wall or seating surface to be aggressively cleaned A summary of the results of 65 independent tests on Xorel is available at carnegiefabrics.com</p>								

*Results above 100,000 double rubs have not been shown to be a reliable indicator of increased fabric lifespan.

