





STEP 1

Excavate cavity for drinking fountain footing.

Position mains pipe & drainage to suit drinking fountain cavity.

Consider:
 -seperate stop cock
 -mains supplied through conduit
-mains pressure to be between 100-500kPa



STEP 2

Install formwork for specified RC slab.



STEP 3

Fix foam form to formwork with top face of ply being at the same height as proposed slab top surface.

Ensure manis & drainage pipes meet foam flush.



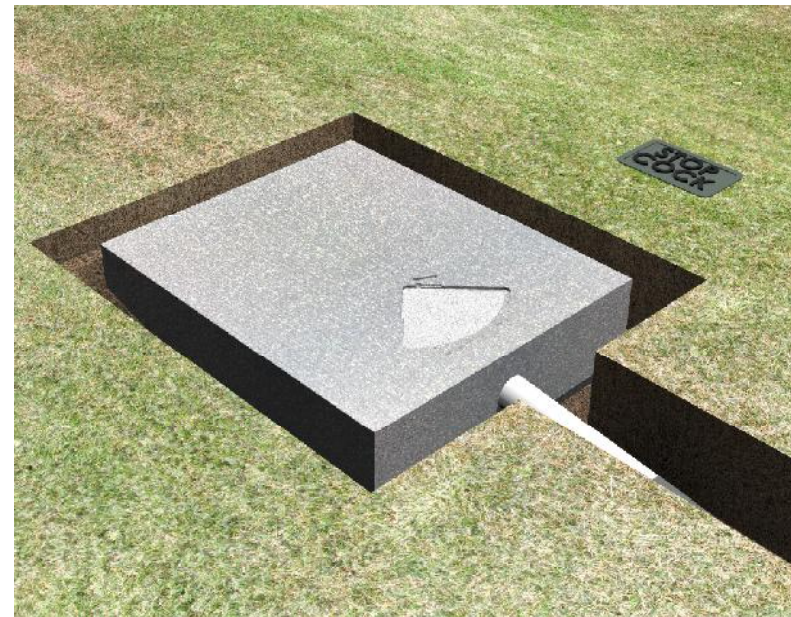
STEP 4

Pour slab ensuring it finishes flush with top surface of ply form.



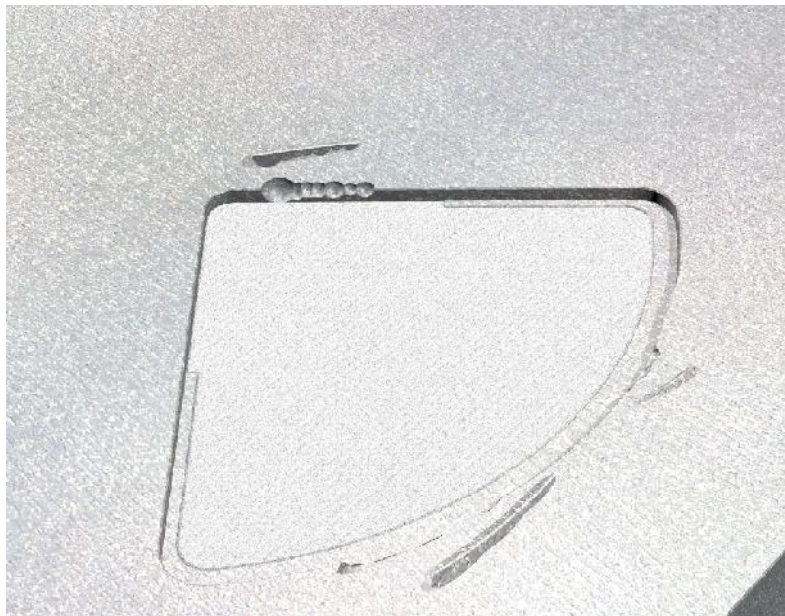
STEP 5

Remove ply & form-work.



STEP 6

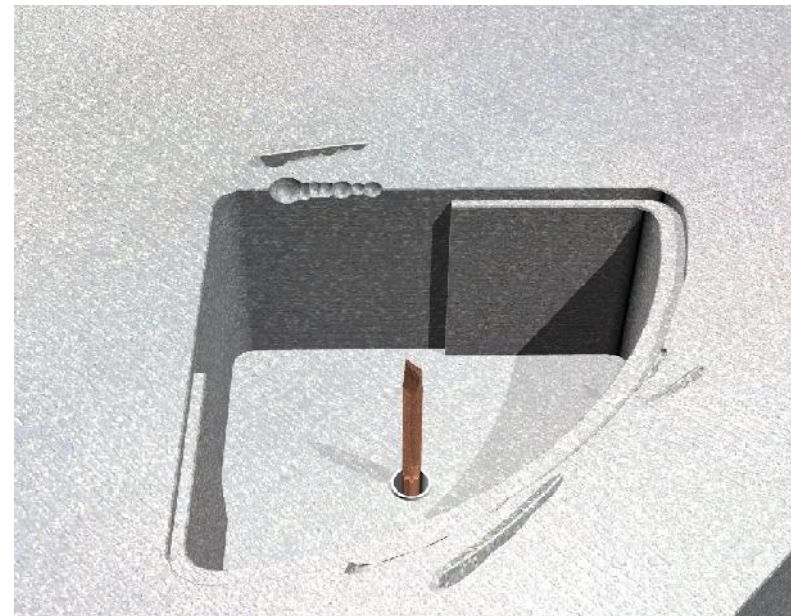
Formwork is removed revealing foam form.



STEP 7

Dissolve foam form.

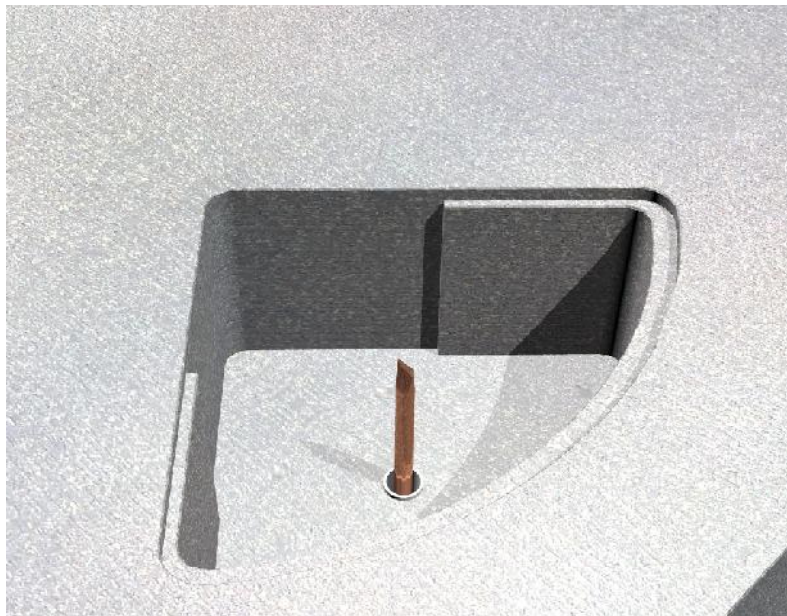
Note: Removal of ply form may have caused scabbled edges to cavity.



STEP 8

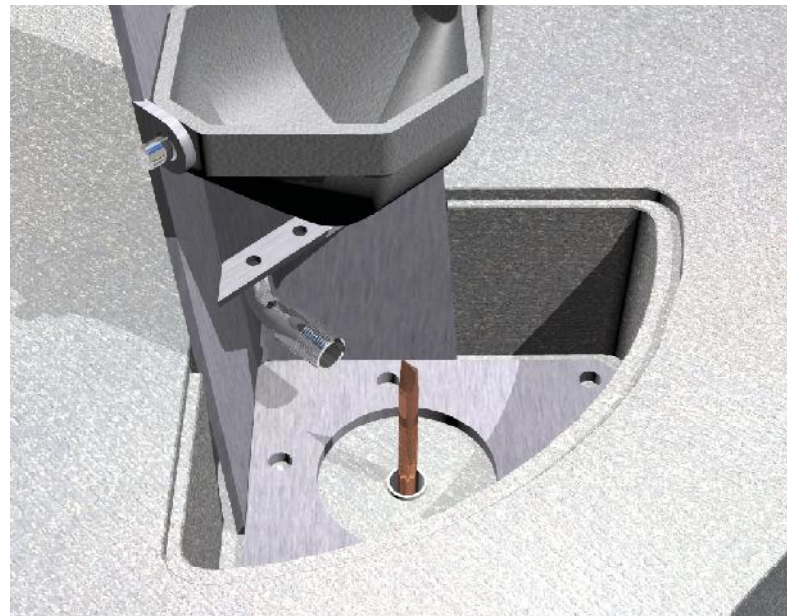
Foam form has been dissolved, revealing drinking fountain cavity.

Scabbled edges can now be patched.



STEP 9

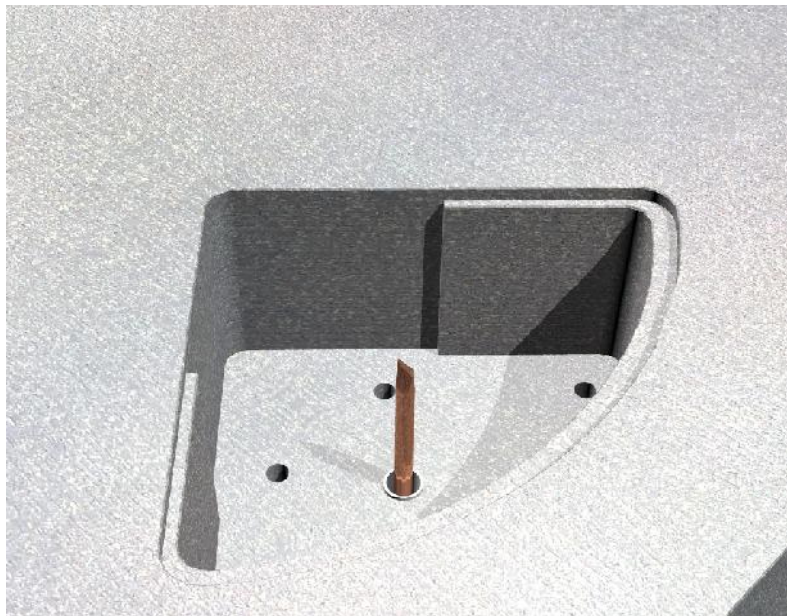
Scabbled edges of cavity have now been patched.



STEP 10

Dry fit drinking fountain & mark up anchor holes in base plate.

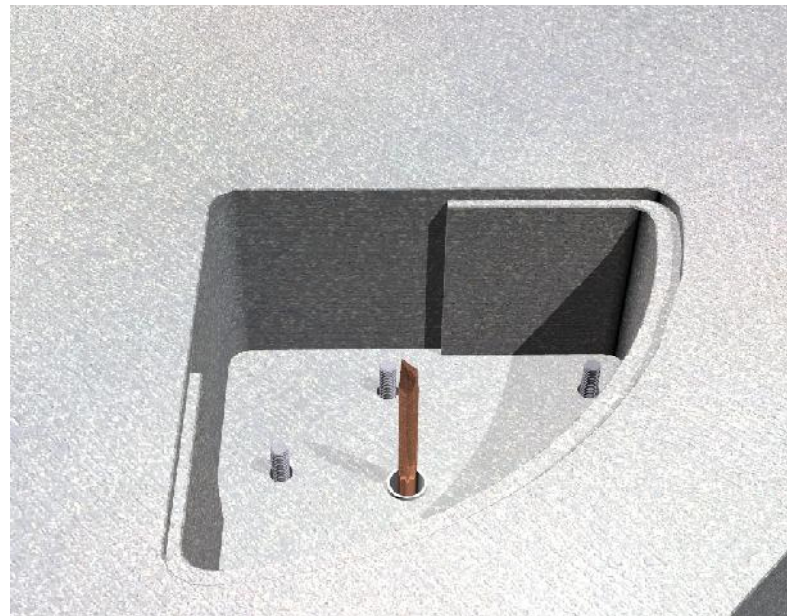
Ensure drinking fountain is located snug into 'V' at back of cavity.



STEP 11

Drill holes to suit anchors.

Min. 100mm depth.

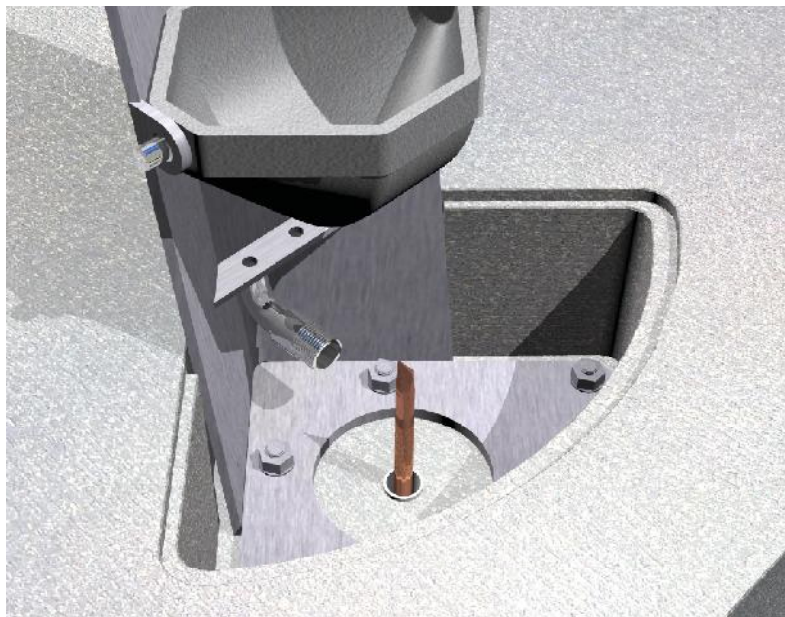


STEP 12

Drop in anchors and fix with epoxy grout.

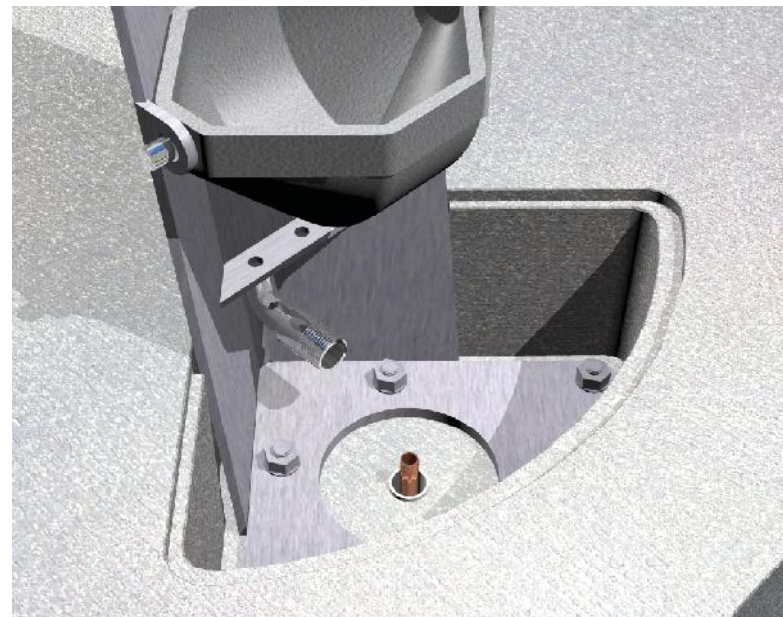
Install as per manufacturer's spec.

Ensure min. 100mm of anchor.



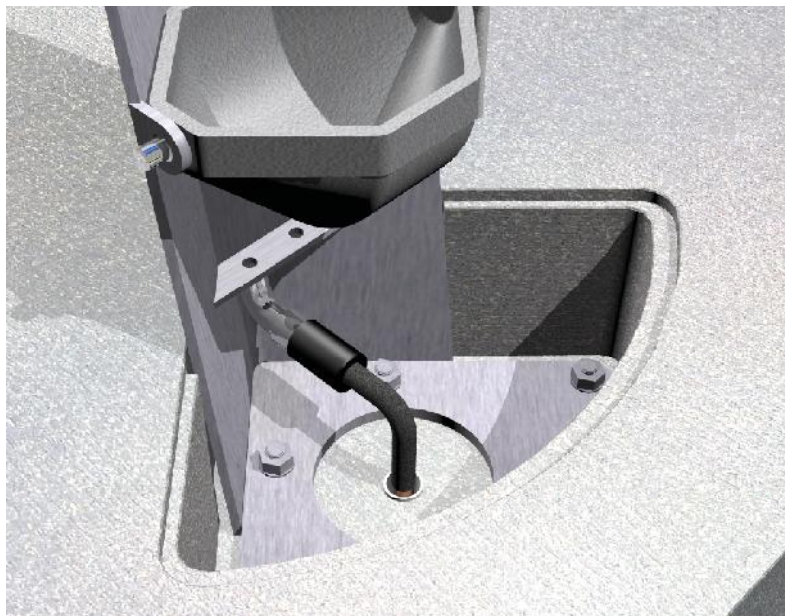
STEP 13

Once chemset has cured, torque fixing nuts & washers to drinking fountain baseplate.



STEP 14

Trim mains pipe.



STEP 15

Fit off 3/4" BSP adaptor supplied by others from mains pipe to male 3/4" spigot on drinking fountain.

Mains pressure to be between 100-500kPa



STEP 16

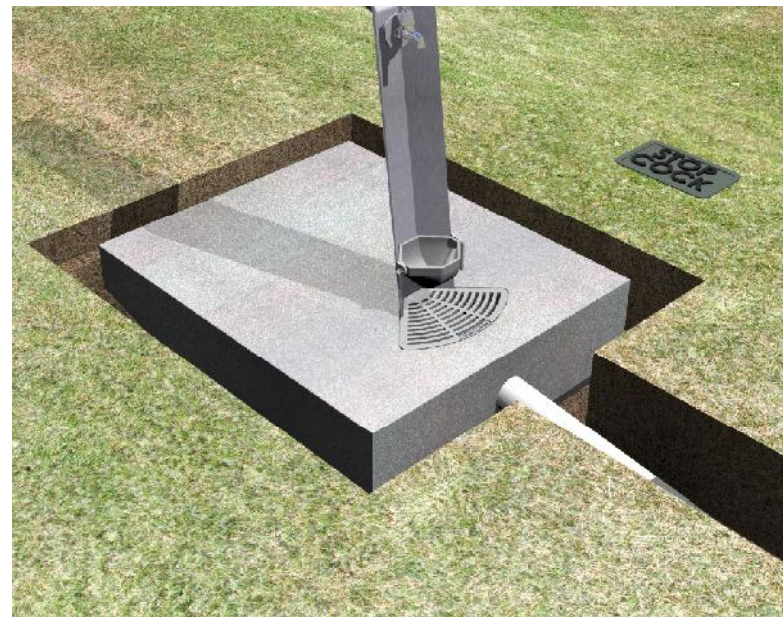
Fix grate to drinking fountain with supplied security bolts.

Note: If dog bowl has been installed, rotating dog bowl will give clearance for accessing these bolts.



STEP 17

Grate security bolts now installed.



STEP 18

Backfill exposed cavity & resurface as required.



STEP 19

Cavity now back-filled & resurfaced.



STEP 20

Finished drinking fountain.