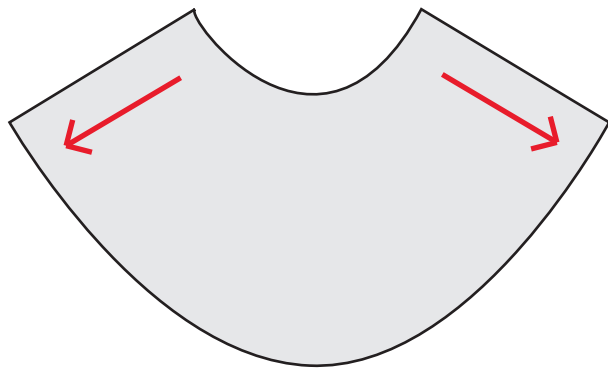


botton + gardiner

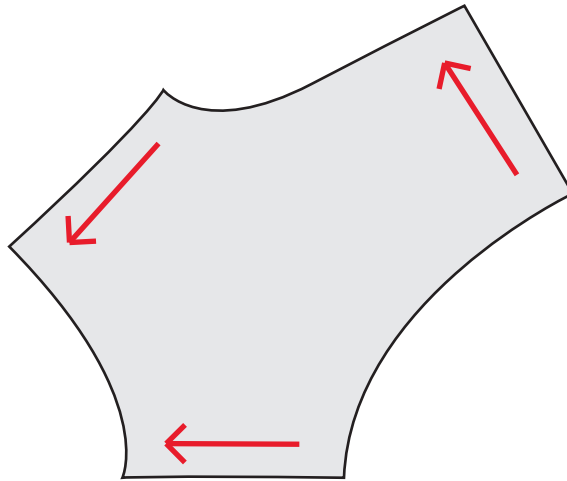
TREE LINE MODULES

PROFILE DIRECTION

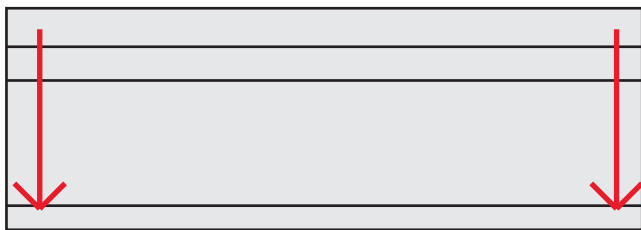
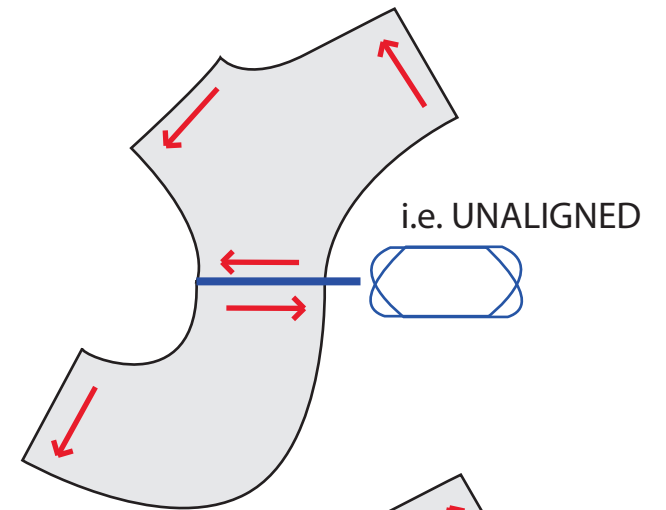
WHEN PLACING MODULES TOGETHER IN LAYOUTS, THE ARROWS MUST BOTH FACE THE SAME DIRECTION. EXAMPLES BELOW:



TREE.C



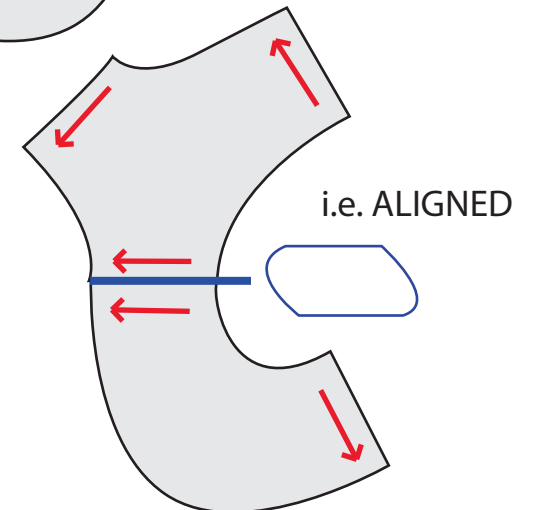
TREE.JN

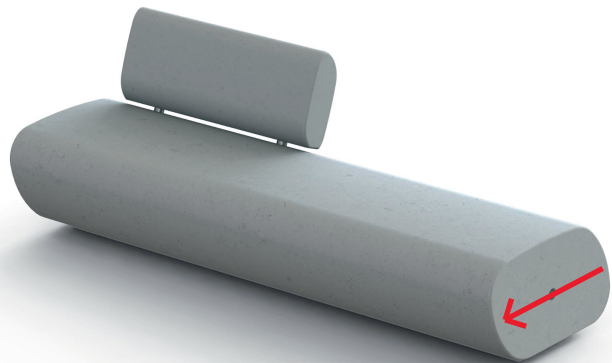


TREE.2200



TREE.1000

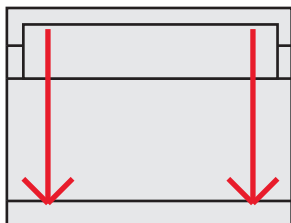




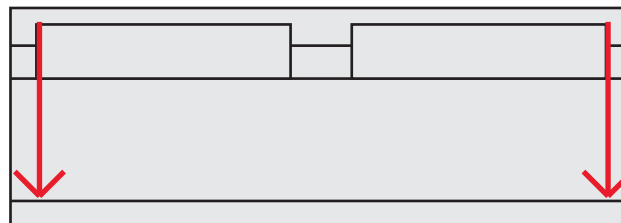
botton + gardiner

TREE LINE MODULES

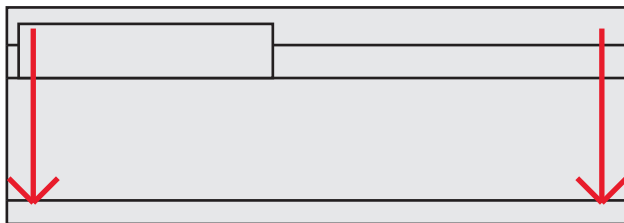
PROFILE DIRECTION



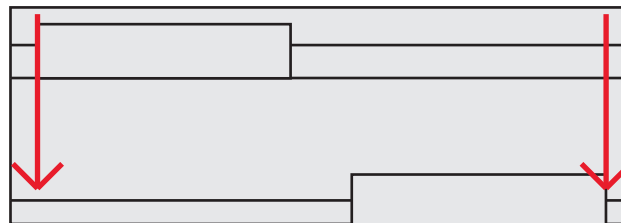
TREE.S.1000.1BR



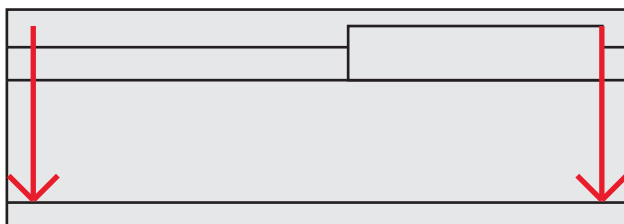
TREE.S.2200.2BR.AL



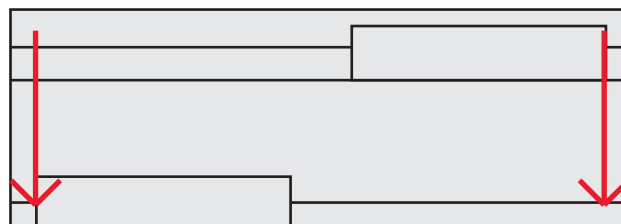
TREE.S.2200.1BR.LH



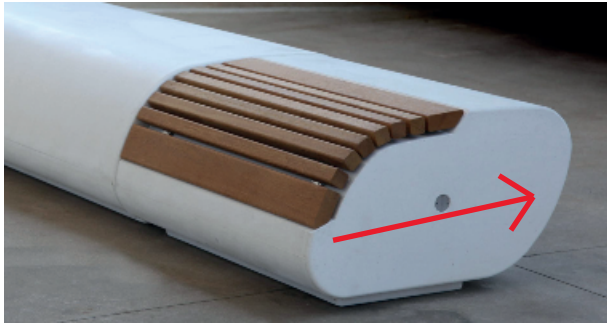
TREE.S.2200.2BR.LH.OP



TREE.S.2200.1BR.RH



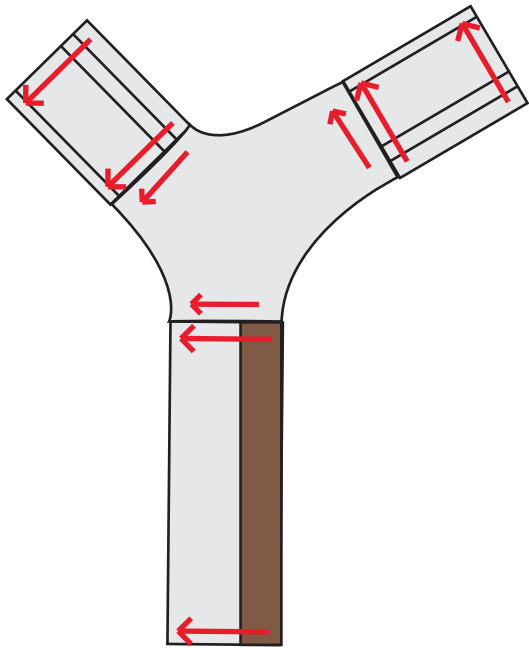
TREE.S.2200.2BR.RH.OP



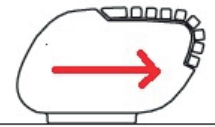
botton + gardiner

LORENZ MODULES

PROFILE DIRECTION



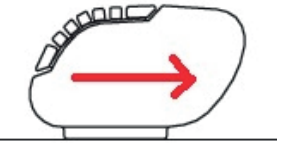
LORE.1000.IN



INTERNAL



LORE.1000.EX



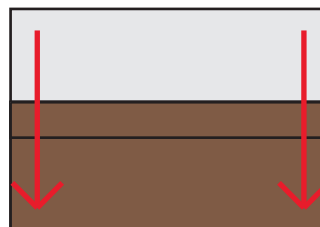
EXTERNAL



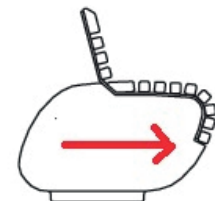
LORE.2200.IN



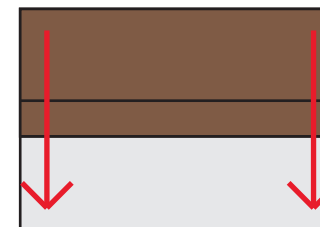
LORE.2200.EX



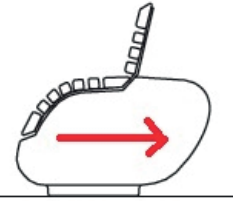
LORE.S.1000.IN



INTERNAL



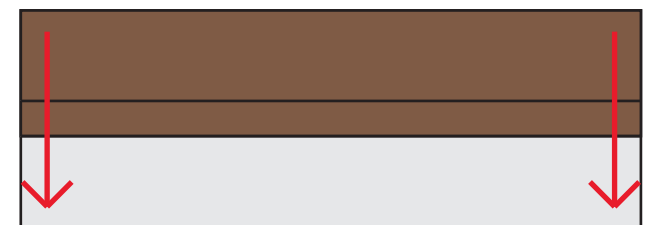
LORE.S.1000.EX



EXTERNAL



LORE.S.2200.IN



LORE.S.2200.EX