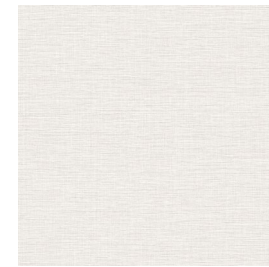


# Emerson Texture



**Emerson Texture** offers a structured textile look accentuated by a dimensional, bidirectional emboss. This design is offered in 17 colorways ranging from classic neutrals to nuanced accents. Type II 20 oz.; Osnaburg backing; reverse hang / random match installation.



A205-012  
Birch



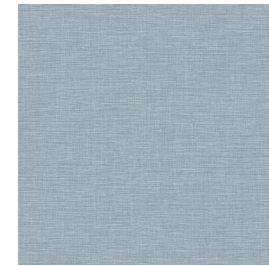
A205-104  
Vellum



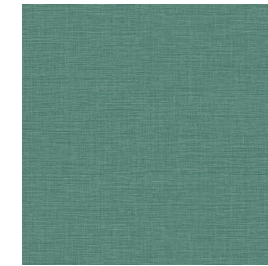
A205-127  
Buff



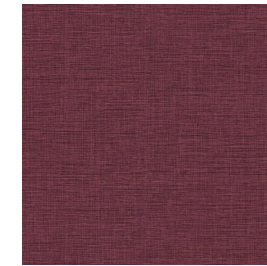
A205-184  
Cambridge



A205-345  
Walden Pond



A205-372  
Seaport



A205-592  
Currant



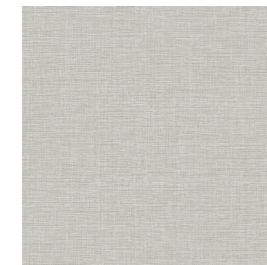
A205-641  
Norfolk



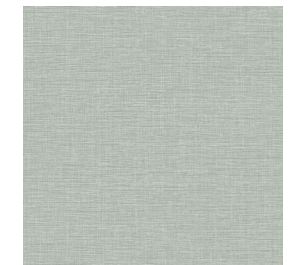
A205-803  
Sterling



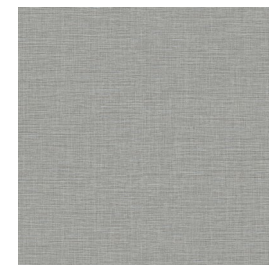
A205-819  
Brighton



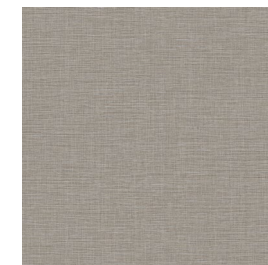
A205-826  
Essex



A205-833  
Harbor



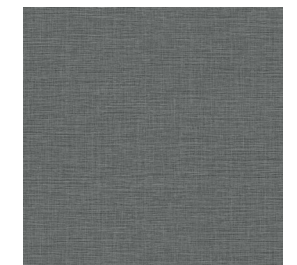
A205-834  
Oxford



A205-852  
Chelsea Gray



A205-867  
Revere



A205-882  
Amherst

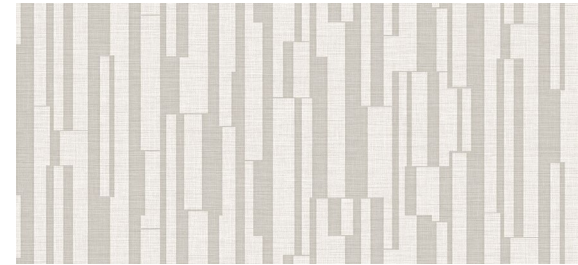
# Emerson



A206-038  
Heather

**Emerson** displays a graphic, linear statement in combination with a structured textile backdrop. This coordinate to **Emerson Texture** is a sophisticated blend of geometric impact and versatility. A timeless color palette inspired by the Eastern Seaboard provides classic neutrals and nuanced accents. Available in 9 colorways; Type II 20 oz.; Osnaburg backing; reverse hang / random match installation.

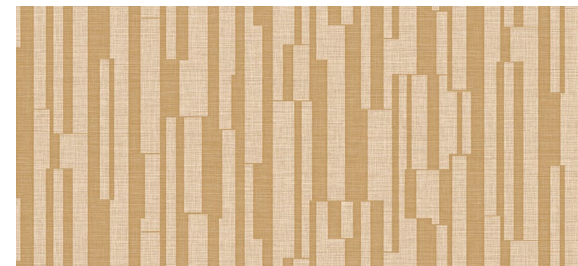
**V E R S A**<sup>®</sup>  
WALLCOVERING



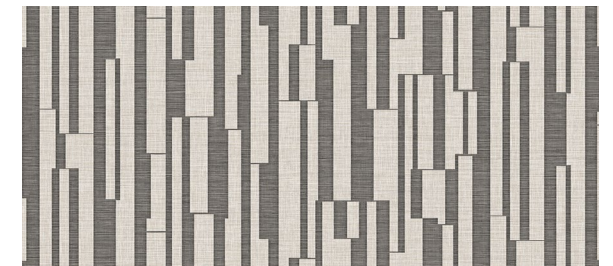
A206-012 / Birch



A206-104 / Vellum



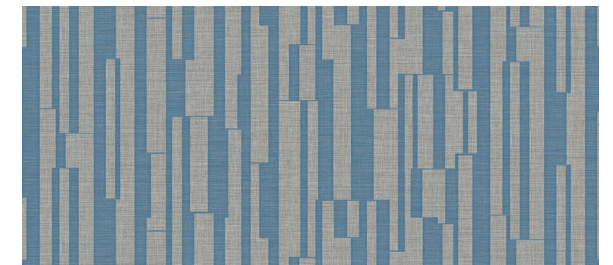
A206-127 / Buff



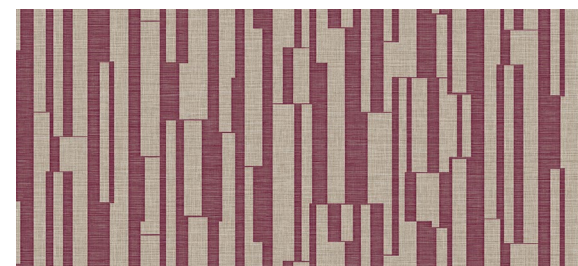
A206-819 / Brighton



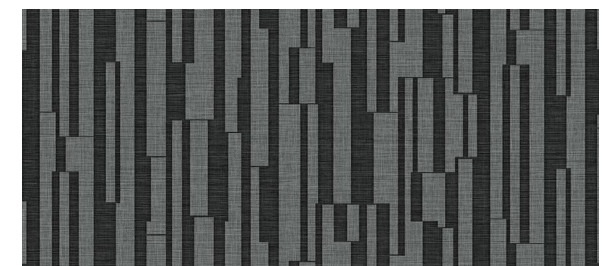
A206-826 / Essex



A206-834 / Oxford



A206-867 / Revere



A206-882 / Amherst