



For Immediate Release

With summer in full swing, the Burch Design Studio introduces two new faux leathers perfectly suited for patio season. Alfresco and Veranda are fade, mold, and mildew resistant making them ideal for all outdoor spaces - rain or shine. Both materials feature playful palettes that match the energy of the season with sunny brights and breezy blues.

Alfresco is a supple leather grain vinyl to add classic beauty

to all spaces - indoors and out. Alfresco features a bold and playful palette of 34 including sun-soaked brights and clear sky blues. Veranda's versatile twill texture is ready to lend a sophisticated vibe to outdoor spaces. Veranda is available in 26 bright and bold shades. Equipped with Resilience finish technology for superior cleanability, Alfresco and Veranda are ready for whatever 'brunch' throws at them.

About Burch

What started out in 1904 as a small upholstery shop in downtown Grand Rapids, Michigan has grown into a worldwide brand synonymous with innovative products that provide quality and value. Burch offers an extensive selection of materials for coordinated application in the hospitality, senior living, corporate and healthcare markets. Our progressive collections of High Performance Seating, Crypton, Vinyl, PVC Free Polyurethane,

Silicone, and Vertical Surface Fabrics are developed with our customer's needs in mind. Our in-house design team strives to develop innovative products to meet the ever changing demands of our industry, whether it be the latest color trends or providing solutions for the latest technical challenges. Our entire offering is inventoried in multiple warehouses throughout North America, allowing for exceptional delivery times.

For Press Information Contact

Laura Back
616.698.2800 x219 laurab@burchfabrics.com

Burch

- **High Performance Vinyl**
- **Bleach Cleanable**
- **35 Colorways**
- **Free of FR Chemicals** / CAL AB 2998 Compliant

Alfresco is a supple leather grain vinyl to add classic beauty to all spaces - indoors and out. Alfresco features a bold and playful palette of 34 including sun-soaked brights and clear sky blues.



						
Aspen	Alabaster	Sahara	Mandarin	Lake	Fossil	Wisp
						
Cloud	Parchment	Khaki	Poppy	Tropic	Cadet	Pebble
						
Buttercream	Twine	Mink	Crimson	Fern	Dolphin	Elephant
						
Nougat	Sepia	Mushroom	Mulberry	Cobalt	Space	Granite
						
Canary	Cinnamon	Espresso	Violet	Indigo	Onyx	Iron

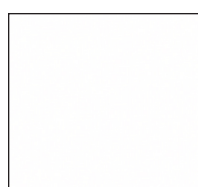
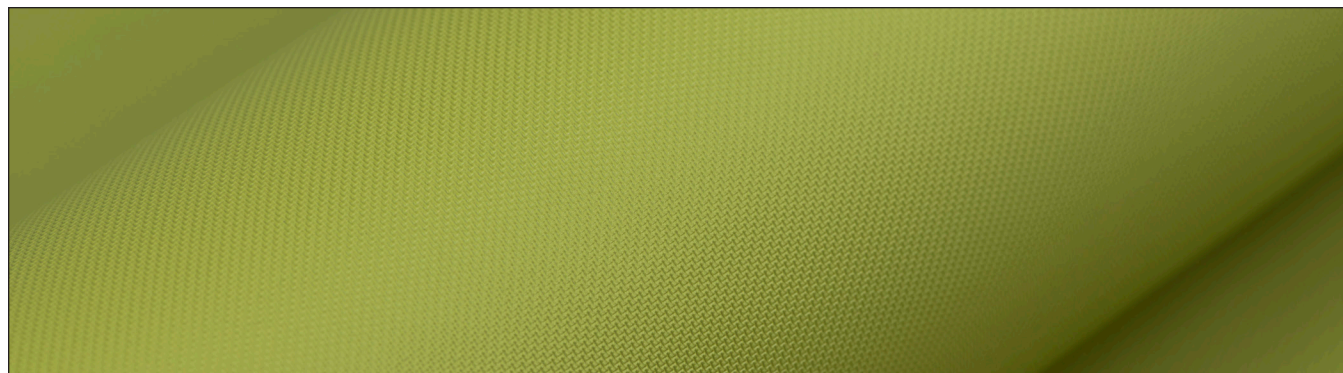
Fabric is not shown to scale.

Veranda

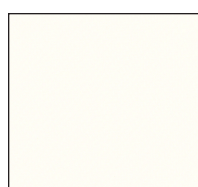
Burch
Press Release

- **High Performance Vinyl**
- **Bleach Cleanable**
- **26 Colorways**
- **Free of FR Chemicals** / CAL AB 2998 Compliant

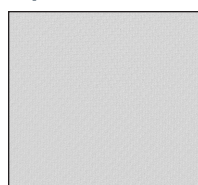
Veranda's versatile twill texture is ready to lend a sophisticated vibe to outdoor spaces. Veranda is available in 26 bright and bold shades.



Alpine



Marshmallow



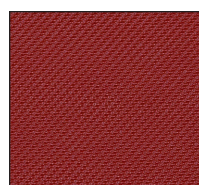
Nimbus



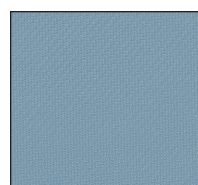
Coconut



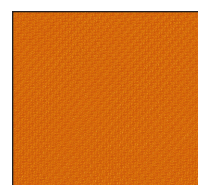
Ecru



Cherry



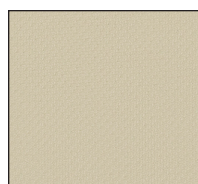
Odyssey



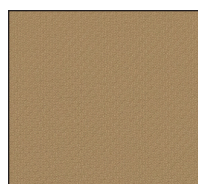
Koi



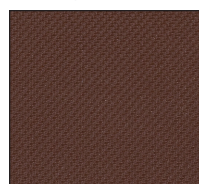
Fog



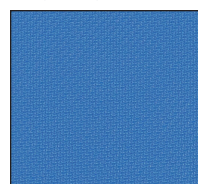
Angora



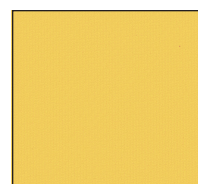
Beach



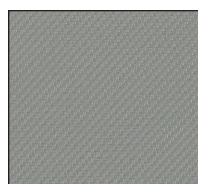
Brick



Cosmic



Daffodil



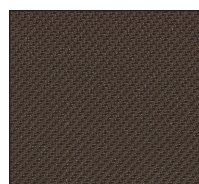
Pewter



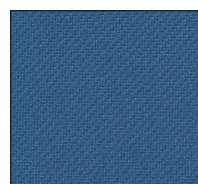
Koala



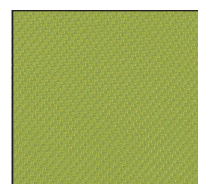
Doe



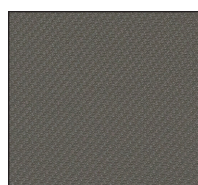
Raisin



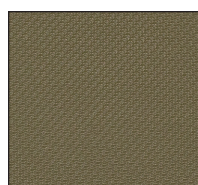
Sapphire



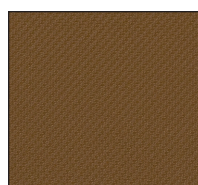
Spring



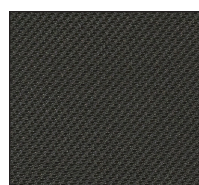
Steel



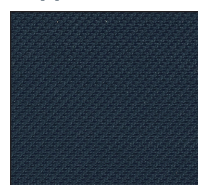
Taupe



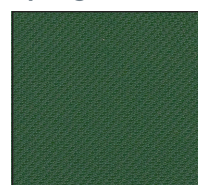
Hazelnut



Jet



Abyss



Pine

Fabric is not shown to scale.

Toll Free **1.800.841.8111**

Visit us at **BurchFabrics.com**