

WAYFARER PRODUCT SPECIFICATIONS

Application
Upholstery

Content
Face - 100% Silicone, Inherently Graffiti-Free®
Middle - 100% Polyurethane

Backing
100% Polyester

Width
54"

Repeat
27.165"H, 24.8" V

General Characteristics

- Abrasion: 200,000+ Double Rubs (ASTM D4157 Wyzenbeek)
- Hydrolysis: 15+ weeks (ISO 1419)
- Colorfastness to Crocking: Grade 5 (AATCC 8)
- Tearing Strength (ASTM D2262)
- Adhesion of Coating (ASTM D751)
- Meets all ACT Heavy Duty Performance Guidelines

Flammability
CA Bulletin 117-2013; UFAC/NFPA-260; IMO A652 (16) 8.2

Cleaning
W/S, Bleach (4:1)

Environmental

- DMF-Free
- PVC/Phthalate Free
- No added FR/Anti-Bacterial
- Complies with Healthier Hospitals & CAL 01350

Country of Origin
South Korea



Cloud



Tea Time



Shoreline



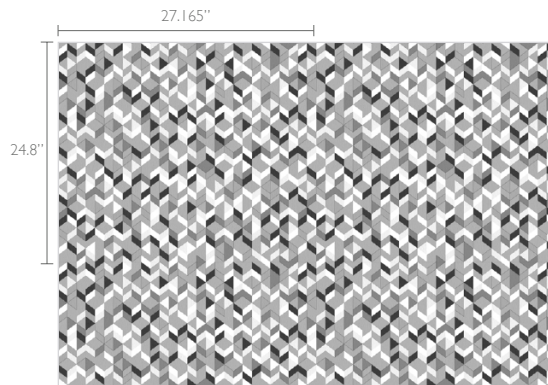
Sunset



Dune



Starry Night



Technical Repeat

Warranty

Please refer to our Terms of Sales for warranty information.
- Multiple factors affect fabric durability and appearance retention, including end-user application and proper maintenance.
Wyzenbeek results above 100,000 Double Rubs have not been shown to be a reliable indicator of increased fabric lifespan.



ACT® Registered Certification Marks